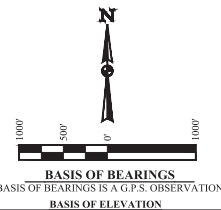
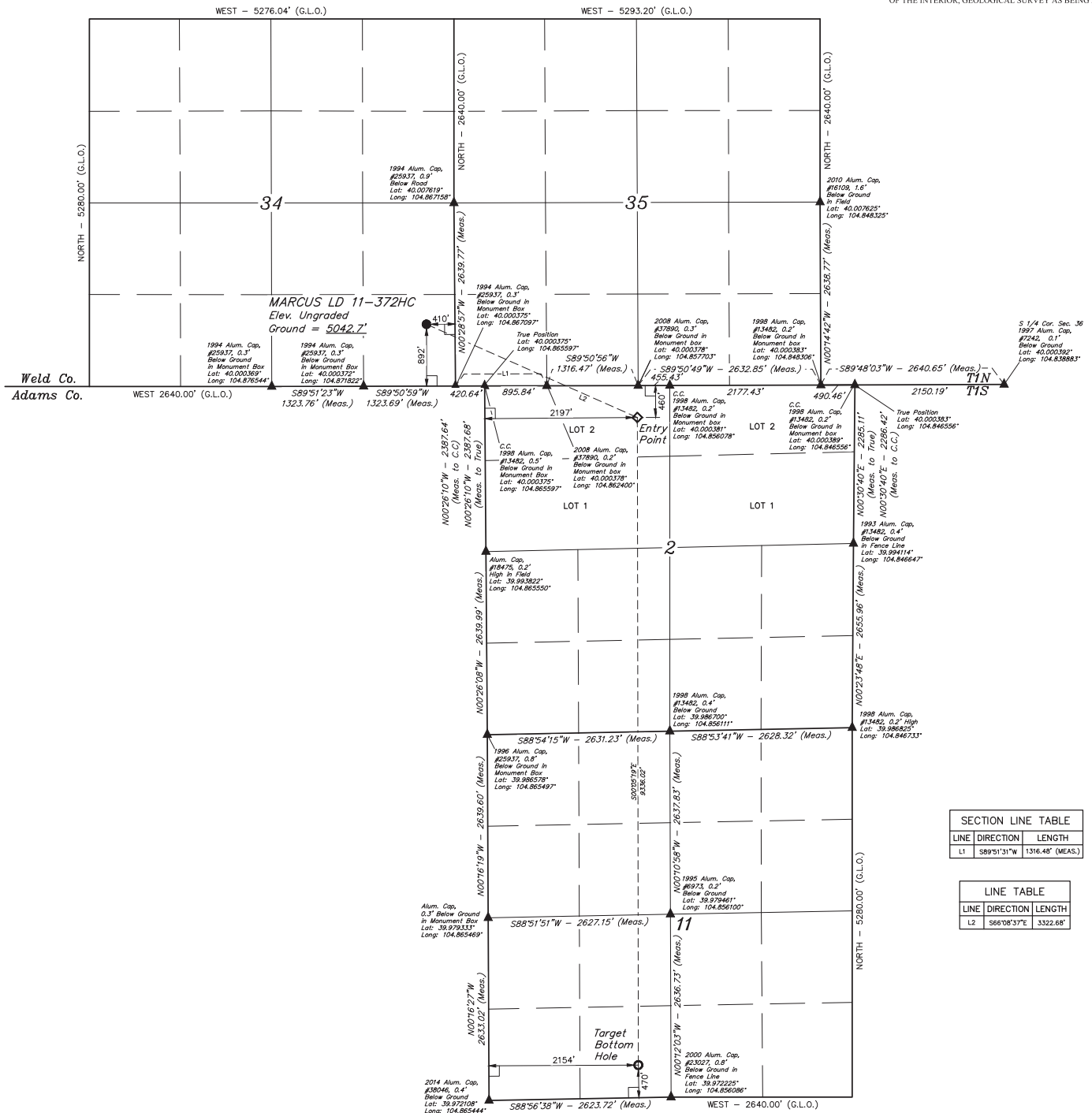


T1N, R67W, 6th P.M.



BENCHMARK JR 53 5026 LOCATED IN THE SW 1/4 SE 1/4 OF SECTION 18, T1N, R68W, 6th P.M., TAKEN FROM 1988 PUBLISHED DATUM BY THE UNITED STATES DEPARTMENT OF THE INTERIOR, GEOLOGICAL SURVEY AS BEING 5028 FEET.



SECTION LINE TABLE		
LINE	DIRECTION	LENGTH
L1	S89°51'31"W	1316.48' (MEAS.)

LINE TABLE		
LINE	DIRECTION	LENGTH
L2	S66°08'37"E	3322.68'

CERTIFICATE

THIS IS TO CERTIFY THAT THE ABOVE AND FOREGOING PHOTODUPLICATIONS OF THE NOTES OF ACTUAL SURVEYS MADE BY ME UNDER MY SIGNATURE AND THAT THE SAME ARE TRUE AND CORRECT TO THE BEST OF MY KNOWLEDGE AND BELIEF.

REGISTERED LAND SURVEYOR
REGISTRATION NO. 28283
STATISTICAL DIVISION

157001214

GREAT WESTERN OIL & GAS COMPANY

MARCUS LD 11-372HC
SE 1/4 SE 1/4, SECTION 34, T1N, R67W, 6th P.M.
WELD COUNTY, COLORADO

UELS, LLC
Corporate Office * 85 South 200 East
Vernal, UT 84078 * (435) 789-1017

PDOP = 1.4



SURVEYED BY: JARED CHRISTOPHER, J.C.		DATE: 11-20-14
DRAWN BY: J.W.		DATE DRAWN: 12-01-14
SCALE: 1" = 1000'		REVISED: 12-15-14

WELL LOCATION PLAT

NAD 83 (TARGET BOTTOM HOLE)	NAD 83 (ENTRY POINT)	NAD 83 (SURFACE LOCATION)
LATITUDE = 39°58'24.58" (39.973494)	LATITUDE = 39°59'56.82" (39.999117)	LATITUDE = 40°00'10.16" (40.002822)
LONGITUDE = 104°51'27.96" (104.857767)	LONGITUDE = 104°51'27.89" (104.857747)	LONGITUDE = 104°52'06.39" (104.868581)
NAD 27 (TARGET BOTTOM HOLE)	NAD 27 (ENTRY POINT)	NAD 27 (SURFACE LOCATION)
LATITUDE = 39°58'24.64" (39.973511)	LATITUDE = 39°59'56.88" (39.999133)	LATITUDE = 40°00'10.22" (40.002839)
LONGITUDE = 104°51'26.05" (104.857236)	LONGITUDE = 104°51'25.98" (104.857217)	LONGITUDE = 104°52'04.99" (104.868053)