

S 1/4 Cor. Sec. 32
1970 Brass Cap, 0.2' High
E-W Fenceline
Lat: 39.651225°
Long: 108.192233°

T5S, R96W, 6th P.M.

SE Cor. Sec. 33
1953 Brass Cap
0.2' High, Pile
of Stones, Fence
Lat: 39.651322°
Long: 108.164147°

Encana OIL & GAS (USA) INC.

Well location, N. PARACHUTE UWF13C-03 H04 596 (SURFACE LOCATION), located as shown in the SE 1/4 NE 1/4 of Section 4, T5S, R96W, 6th P.M., Garfield County, Colorado.

BASIS OF ELEVATION

BENCH MARK (H79) LOCATED IN THE NE 1/4 OF SECTION 35, T4S, R98W, 6th P.M. TAKEN FROM THE BULL FORK QUADRANGLE, COLORADO, 7.5 MINUTE SERIES (TOPO GRAPHICAL MAP) PUBLISHED BY THE UNITED STATES DEPARTMENT OF THE INTERIOR, GEOLOGICAL SURVEY. SAID ELEVATION IS MARKED AS BEING 8535 FEET.

BASIS OF BEARINGS

BASIS OF BEARINGS IS A G.P.S. OBSERVATION.

Sheet 1iii of 9



CERTIFICATE

THIS IS TO CERTIFY THAT THE ABOVE PLAT WAS PREPARED AND LOCATION AS SHOWN WAS STAKED ON THE GROUND FROM FIELD NOTES OF ACTUAL SURVEYS MADE BY ME OR UNDER MY SUPERVISION AND THAT THE SAME ARE TRUE AND CORRECT TO THE BEST OF MY KNOWLEDGE AND BELIEF.

REGISTERED LAND SURVEYOR
REGISTRATION NO. 17492
STATE OF COLORADO
05-15-14

REV.: 05-07-14 A.R.

UINTAH ENGINEERING & LAND SURVEYING
85 SOUTH 200 EAST - VERNAL, UTAH 84078
(435) 789-1017

LEGEND:

- = 90° SYMBOL
- = PROPOSED WELL HEAD.
- = SECTION CORNERS LOCATED.
- = SECTION CORNERS RE-ESTABLISHED.
(Not Set on Ground.)

LINE TABLE

LINE	DIRECTION	LENGTH
L1	N89°35'21"E	195.03'
L2	S89°37'21"W	200.90'

PDOP = 1.4

NAD 83 (SURFACE LOCATION)	
LATITUDE	= 39°38'44.63" (39.645731)
LONGITUDE	= 108°09'54.27" (108.165075)
NAD 27 (SURFACE LOCATION)	
LATITUDE	= 39°38'44.72" (39.645756)
LONGITUDE	= 108°09'51.98" (108.164439)

SCALE 1" = 1000'	DATE SURVEYED: 04-11-12	DATE DRAWN: 04-17-12
PARTY B.B. C.C. T.B.	REFERENCES G.L.O. PLAT	
WEATHER COLD	FILE Encana OIL & GAS (USA) INC.	

S 1/4 Cor. Sec. 33
1970 Brass Cap
0.3' High, Fence Cor.
Lat: 39.651286°
Long: 108.173514°

SW Cor. Sec. 34
1953 Brass Cap
0.2' High, Pile
of Stones, Fence
Lat: 39.651322°
Long: 108.164147°

T5S, R96W, 6th P.M.

SE Cor. Sec. 34
1953 Brass Cap
0.2' High, E-W
Fenceline, Mound
of Stones, Steel Post
Lat: 39.651386°
Long: 108.145378°

Encana OIL & GAS (USA) INC.

Well location, N. PARACHUTE UWF13C-03 H04 596
(TARGET BOTTOM HOLE), located as shown in the
SE 1/4 NW 1/4 of Section 3, T5S, R96W, 6th
P.M., Garfield County, Colorado.

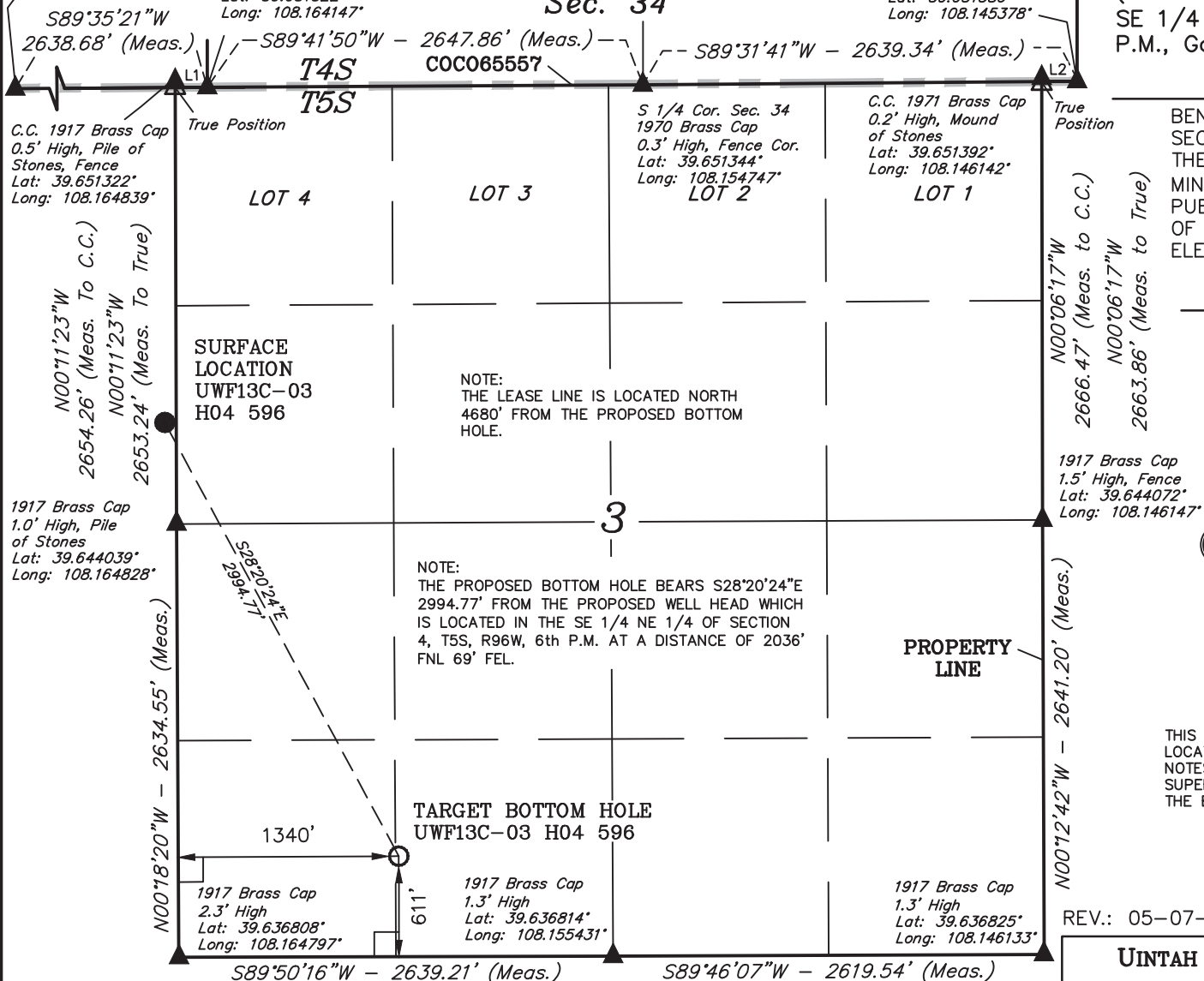
BASIS OF ELEVATION

BENCH MARK (H79) LOCATED IN THE NE 1/4 OF
SECTION 35, T4S, R98W, 6th P.M. TAKEN FROM
THE BULL FORK QUADRANGLE, COLORADO, 7.5
MINUTE SERIES (TOPO GRAPHICAL MAP)
PUBLISHED BY THE UNITED STATES DEPARTMENT
OF THE INTERIOR, GEOLOGICAL SURVEY. SAID
ELEVATION IS MARKED AS BEING 8535 FEET.

BASIS OF BEARINGS

BASIS OF BEARINGS IS A G.P.S. OBSERVATION.

Sheet 1jjj of 9



CERTIFICATE

THIS IS TO CERTIFY THAT THE ABOVE PLAT WAS PREPARED AND
LOCATION AS SHOWN WAS STAKED ON THE GROUND FROM FIELD
NOTES OF ACTUAL SURVEYS MADE BY ME OR UNDER MY
SUPERVISION AND THAT THE SAME ARE TRUE AND CORRECT
TO THE BEST OF MY KNOWLEDGE AND BELIEF.

REGISTERED LAND SURVEYOR
REGISTRATION NO. 17492
STATE OF COLORADO
09-15-14

REV.: 05-07-14 A.R.

LEGEND:

- └─┘ = 90° SYMBOL
- = PROPOSED WELL HEAD.
- ▲ = SECTION CORNERS LOCATED.
- △ = SECTION CORNERS
RE-ESTABLISHED.
(Not Set on Ground.)

LINE TABLE

LINE	DIRECTION	LENGTH
L1	N89°35'21"E	195.03'
L2	S89°31'41"W	215.17'

NAD 83 (TARGET BOTTOM HOLE)	
LATITUDE	= 39°38'18.56" (39.638489)
LONGITUDE	= 108°09'36.18" (108.160050)
NAD 27 (TARGET BOTTOM HOLE)	
LATITUDE	= 39°38'18.65" (39.638514)
LONGITUDE	= 108°09'33.89" (108.159414)

UINTAH ENGINEERING & LAND SURVEYING
85 SOUTH 200 EAST - VERNAL, UTAH 84078
(435) 789-1017

SCALE 1" = 1000'	DATE SURVEYED: 04-11-12	DATE DRAWN: 04-17-12
PARTY B.B. C.C. T.B.	REFERENCES G.L.O. PLAT	
WEATHER COLD	FILE Encana OIL & GAS (USA) INC.	