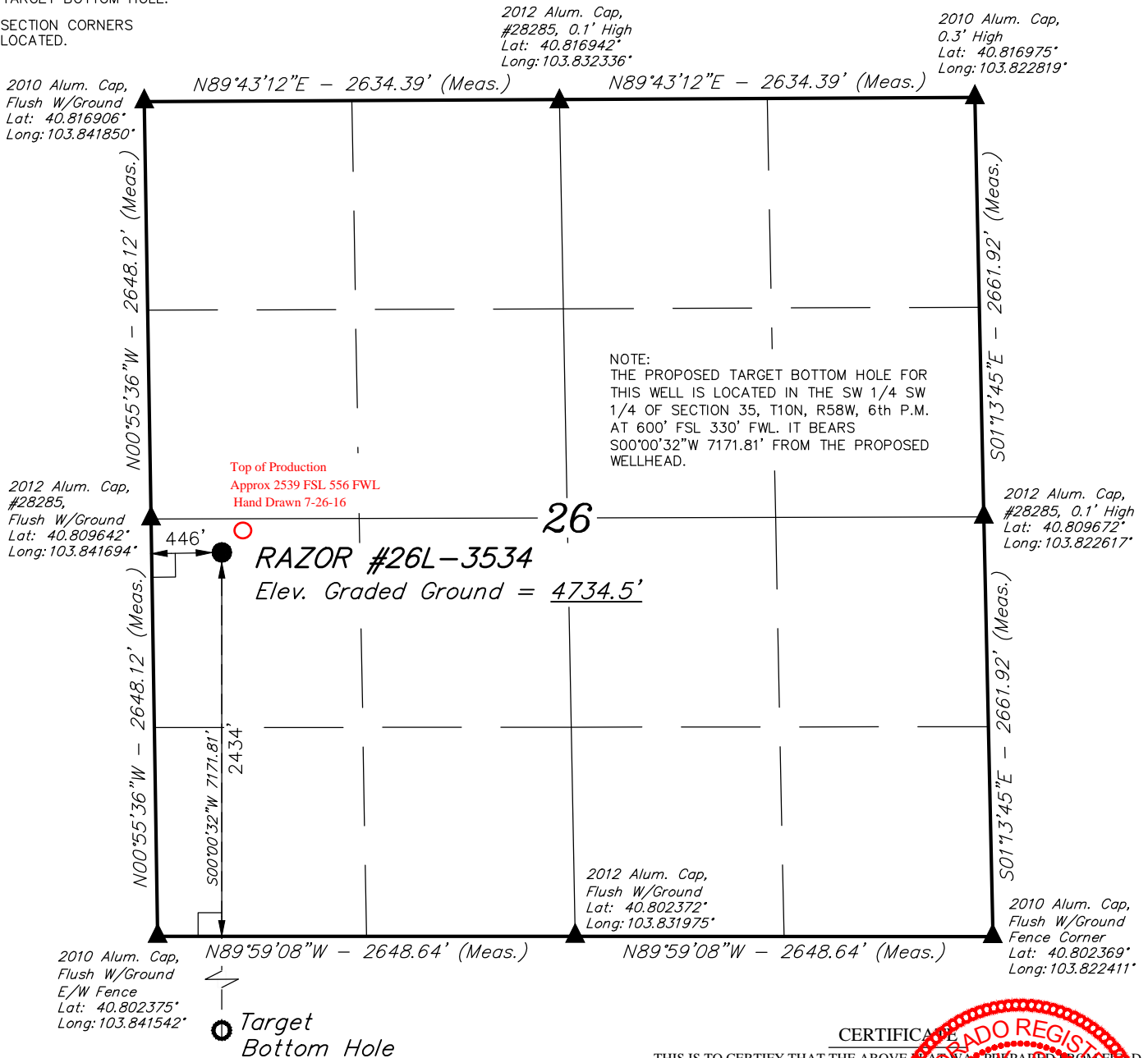


T10N, R58W, 6th P.M.

LEGEND:

- └─ = 90° SYMBOL
- = PROPOSED WELLHEAD.
- = TARGET BOTTOM HOLE.
- ▲ = SECTION CORNERS LOCATED.



PDOP = 1.2

| | |
|--|--|
| NAD 83 (SURFACE LOCATION) | |
| LATITUDE = 40°48'32.60" (40.809056) | |
| LONGITUDE = 103°50'24.26" (103.840072) | |
| NAD 27 (SURFACE LOCATION) | |
| LATITUDE = 40°48'32.65" (40.809069) | |
| LONGITUDE = 103°50'22.45" (103.839569) | |



CERTIFICATE
 THIS IS TO CERTIFY THAT THE ABOVE PLAT WAS PREPARED FROM FIELD NOTES OF ACTUAL SURVEYS MADE BY ME OR UNDER MY SUPERVISION, AND THAT THE SAME ARE TRUE AND CORRECT TO THE BEST OF MY KNOWLEDGE AND BELIEF.



BASIS OF BEARINGS
 BASIS OF BEARINGS IS A G.P.S. OBSERVATION

BASIS OF ELEVATION
 SPOT ELEVATION LOCATED AT THE NORTHEAST CORNER OF SECTION 15, T9N, R58W, 6th P.M. TAKEN FROM THE GATEHOOK SPRING, QUADRANGLE, COLORADO, WELD COUNTY, 7.5 MINUTE QUAD (TOPOGRAPHIC MAP) PUBLISHED BY THE UNITED STATES DEPARTMENT OF THE INTERIOR, GEOLOGICAL SURVEY. SAID ELEVATION IS MARKED AS BEING 4679 FEET.

WHITING OIL & GAS CORP.

RAZOR #26L-3534 (SURFACE LOCATION)
 NW 1/4 SW 1/4, SECTION 26, T10N, R58W, 6th P.M.
 WELD COUNTY, COLORADO

| | |
|--------------------------------------|----------------------|
| SURVEYED BY: JARED CHRISTOPHER, D.W. | DATE: 06-15-15 |
| DRAWN BY: N.F. | DATE DRAWN: 07-07-15 |
| SCALE: 1" = 1000' | REVISED: 07-29-15 |



UELS, LLC
 Corporate Office * 85 South 200 East
 Vernal, UT 84078 * (435) 789-1017



WELL LOCATION PLAT

T10N, R58W, 6th P.M.

LEGEND:

- └─ = 90° SYMBOL
- = PROPOSED WELLHEAD.
- = TARGET BOTTOM HOLE.
- ▲ = SECTION CORNERS LOCATED.

Surface Location

2010 Alum. Cap
Flush W/Ground
E/W Fence
Lat: 40.802375°
Long: 103.841542°

N89°59'08"W - 2648.64' (Meas.)

2012 Alum. Cap
Flush W/Ground
Lat: 40.802372°
Long: 103.831975°

N89°59'08"W - 2648.64' (Meas.)

2010 Alum. Cap
Flush W/Ground
Fence Corner
Lat: 40.802369°
Long: 103.822411°

S00°54'40"E - 2669.61' (Meas.)

S00°00'32"W
7171.81'

N01°08'08"W - 2660.46' (Meas.)

2012 Alum. Cap
#28285, 0.2' High
Lat: 40.795050°
Long: 103.841386°

35

2012 Alum. Cap
0.5' High
Lat: 40.795069°
Long: 103.822222°

NOTE:
THE PROPOSED TARGET BOTTOM HOLE BEARS S00°00'32"W 7171.81' FROM THE PROPOSED WELLHEAD WHICH IS LOCATED IN THE NW 1/4 SW 1/4 OF SECTION 26, T10N, R58W, 6th P.M. AT 2434' FSL 446' FWL.

S00°54'40"E - 2669.61' (Meas.)

330'
600'
RAZOR #26L-3534
Target Bottom Hole

N01°08'08"W - 2660.46' (Meas.)

2010 Alum. Cap
0.1' High, Steel Post
Lat: 40.787772°
Long: 103.822033°

2010 Alum. Cap
0.3' High
Lat: 40.787725°
Long: 103.841233°

N89°48'47"E - 2658.94' (Meas.)

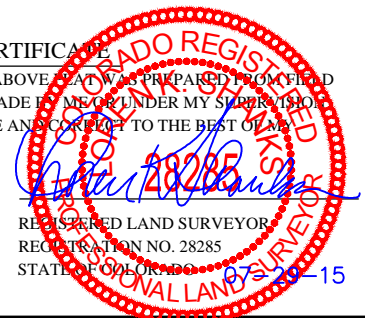
2010 Alum. Cap
Flush W/Ground
Lat: 40.787747°
Long: 103.831633°

N89°48'47"E - 2658.94' (Meas.)

T10N
T9N

CERTIFICATE

THIS IS TO CERTIFY THAT THE ABOVE PLAT WAS PREPARED FROM FIELD NOTES OF ACTUAL SURVEYS MADE BY ME OR UNDER MY SUPERVISION, AND THAT THE SAME ARE TRUE AND CORRECT TO THE BEST OF MY KNOWLEDGE AND BELIEF.



| |
|--|
| NAD 83 (TARGET BOTTOM HOLE) |
| LATITUDE = 40°47'21.75" (40.789375) |
| LONGITUDE = 103°50'24.28" (103.840078) |
| NAD 27 (TARGET BOTTOM HOLE) |
| LATITUDE = 40°47'21.80" (40.789389) |
| LONGITUDE = 103°50'22.47" (103.839575) |



BASIS OF BEARINGS
BASIS OF BEARINGS IS A G.P.S. OBSERVATION

BASIS OF ELEVATION

SPOT ELEVATION LOCATED AT THE NORTHEAST CORNER OF SECTION 15, T9N, R58W, 6th P.M. TAKEN FROM THE GATEHOOK SPRING, QUADRANGLE, COLORADO, WELD COUNTY, 7.5 MINUTE QUAD (TOPOGRAPHIC MAP) PUBLISHED BY THE UNITED STATES DEPARTMENT OF THE INTERIOR, GEOLOGICAL SURVEY. SAID ELEVATION IS MARKED AS BEING 4679 FEET.

WHITING OIL & GAS CORP.

RAZOR #26L-3534 (TARGET BOTTOM HOLE)
SW 1/4 SW 1/4, SECTION 35, T10N, R58W, 6th P.M.
WELD COUNTY, COLORADO

| | |
|--------------------------------------|----------------------|
| SURVEYED BY: JARED CHRISTOPHER, D.W. | DATE: 06-15-15 |
| DRAWN BY: N.F. | DATE DRAWN: 07-07-15 |
| SCALE: 1" = 1000' | REVISED: 07-29-15 |

WELL LOCATION PLAT



UELS, LLC
Corporate Office * 85 South 200 East
Vernal, UT 84078 * (435) 789-1017

