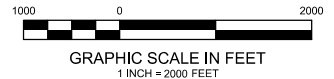
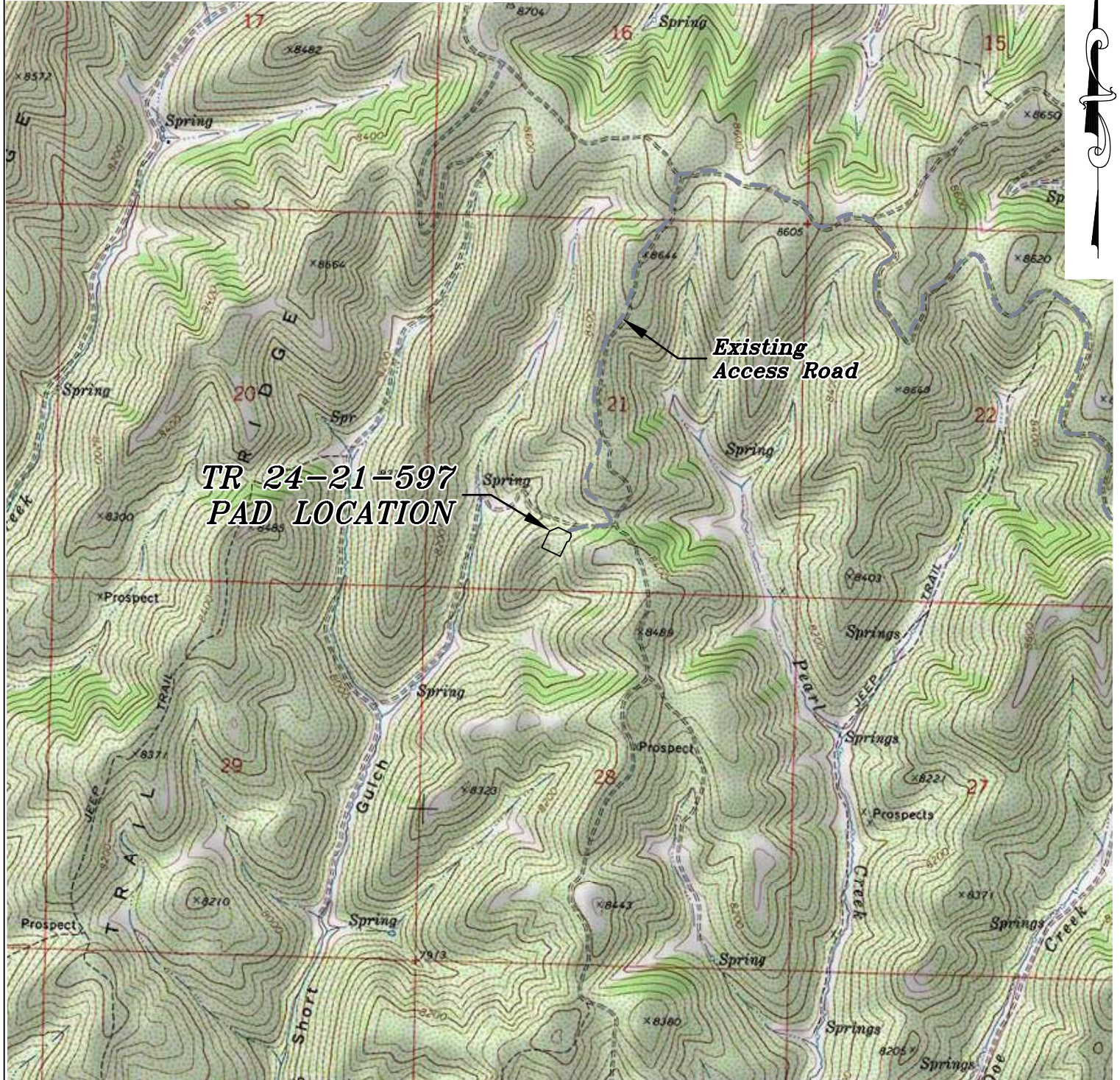


Section 21
 T. 5 S., R. 97 W.
 6th. P.M.



ACCESS DESCRIPTION:

FROM THE INTERSECTION OF THE I-70 FRONTAGE ROAD AND COUNTY ROAD 215 AT PARACHUTE, PROCEED IN A NORTHERLY DIRECTION ALONG COUNTY ROAD 215 ±7.2 MILES TO THE INTERSECTION WITH GARDEN GULCH ROAD, PROCEED LEFT IN A WESTERLY DIRECTION ALONG GARDEN GULCH ROAD ±23.1 MILES TO AN INTERSECTION WITH A DIRT/GRAVEL ROAD, PROCEED LEFT IN A SOUTHERLY DIRECTION ±3.1 MILES TO AN INTERSECTION WITH A DIRT/GRAVEL ROAD, PROCEED RIGHT IN A WESTERLY DIRECTION ±0.1 MILES TO THE TR 24-21-597 DRILL PAD LOCATION, AS SHOWN HEREON.

REVISED: 8/5/16

136 East Third Street
 Rifle, Colorado 81650
 Ph. (970) 625-2720
 Fax (970) 625-2773



SCALE:	1" = 2000'
DATE:	5/14/13
PLAT:	5 of 9
PROJECT:	Trail Ridge
DFT:	cs

Construction Plan Prepared for:

TERRA ENERGY PARTNERS TEP Rocky Mountain LLC

TR 24-21-597 Drill Pad - Plat 5
 ACCESS ROAD & TOPO MAP