

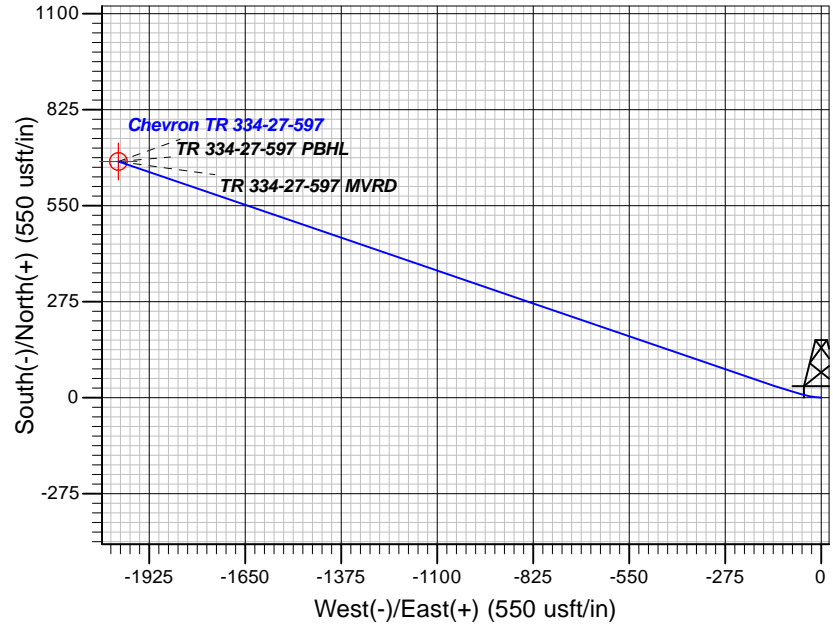
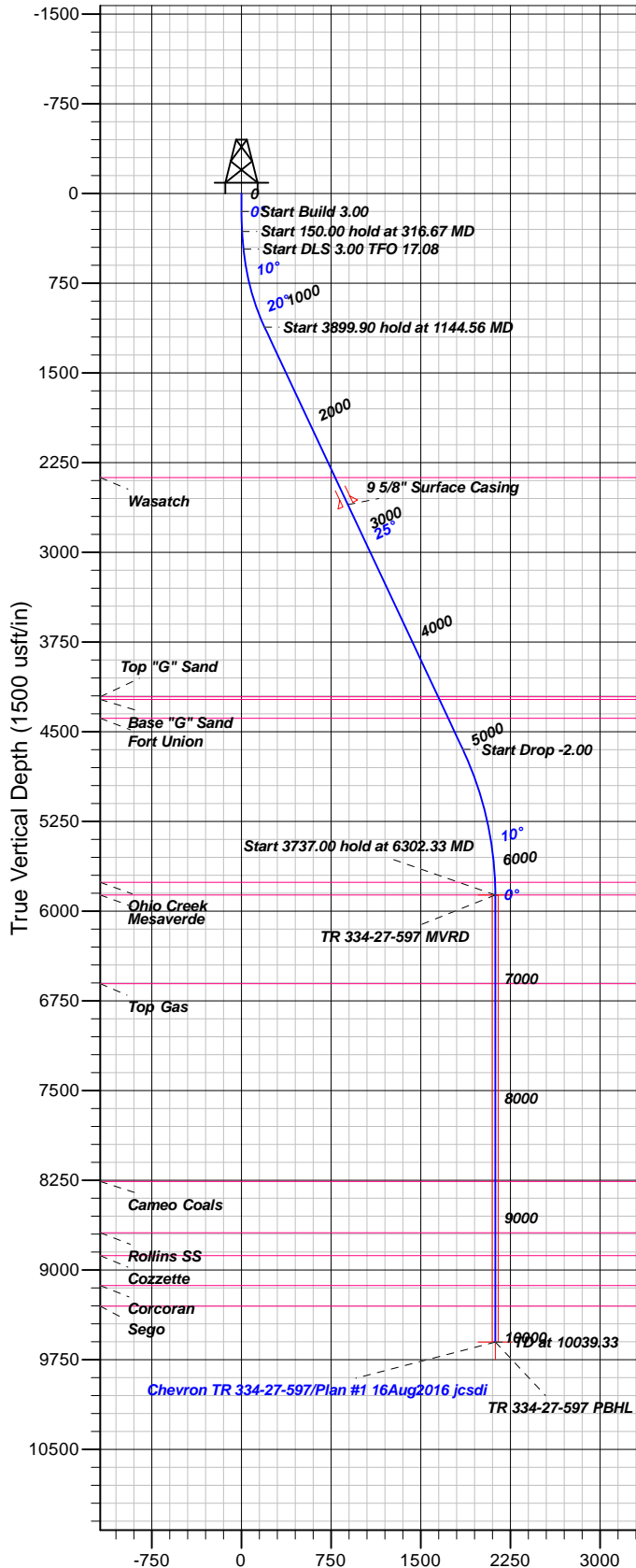
Well Details: Chevron TR 334-27-597

GL 8465' & RKB 24' @ 8489.00usft (H&P 318)

+N/-S	+E/-W	Northing	Easting	Latitude	Longitude	Slot
0.00	0.00	1647183.10	2223332.90	39.5779650	-108.2558136	B5

**T M** Azimuths to True North  
Magnetic North: 9.81°

Magnetic Field  
Strength: 51629.7snT  
Dip Angle: 65.66°  
Date: 8/16/2016  
Model: BGGM2016



FORMATION TOP DETAILS

TVDPath	MDPath	Formation
2375.00	2534.19	Wasatch
4207.00	4558.18	Top "G" Sand
4230.00	4583.59	Base "G" Sand
4388.00	4758.14	Fort Union
5759.00	6196.31	Ohio Creek
5865.00	6302.33	Mesaverde
6606.00	7043.33	Top Gas
8259.00	8696.33	Cameo Coals
8688.00	9125.33	Rollins SS
8880.00	9317.33	Cozzette
9129.00	9566.33	Corcoran
9302.00	9739.33	Sego

Plan: Plan #1 16Aug2016 jcsdi

11:56, August 25 2016  
Created By: Janie Collins

PROJECT DETAILS: Garfield County, CO NAD83

Geodetic System: US State Plane 1983  
Datum: North American Datum 1983  
Ellipsoid: GRS 1980  
Zone: Colorado Central Zone

System Datum: Mean Sea Level

CASING DETAILS

TVD	MD	Name	Size
2601.12	2784.09	5/8" Surface Casing	9.62

SECTION DETAILS

Sec	MD	Inc	Azi	TVD	+N/-S	+E/-W	Dleg	TFace	Vsect	Target
1	0.00	0.00	0.00	0.00	0.00	0.00	0.00	0.00	0.00	
2	150.00	0.00	0.00	150.00	0.00	0.00	0.00	0.00	0.00	
3	316.67	5.00	275.00	316.46	0.63	-7.24	3.00	275.00	7.06	
4	466.67	5.00	275.00	465.88	1.77	-20.26	0.00	0.00	19.77	
5	1144.56	25.16	288.89	1117.19	51.53	-187.78	3.00	17.08	194.41	
6	5044.46	25.16	288.89	4647.16	588.35	-1756.34	0.00	0.00	1852.26	
7	6302.33	0.00	0.00	5865.00	676.34	-2013.44	2.00	180.00	124.00	TR 334-27-597 MVRD
8	10039.33	0.00	0.00	9602.00	676.34	-2013.44	0.00	0.00	124.00	TR 334-27-597 PBHL

DESIGN TARGET DETAILS

Name	TVD	+N/-S	+E/-W	Northing	Easting	Latitude	Longitude	Shape
TR 334-27-597 MVRD5865.00		676.34	-2013.44	1647920.20	2221340.90	39.5798216	-108.2629569	Circle (Radius: 25.00)
- plan hits target center								
TR 334-27-597 PBHL 9602.00		676.34	-2013.44	1647920.20	2221340.90	39.5798216	-108.2629569	Point
- plan hits target center								



## **Terra Energy Partners**

**Garfield County, CO NAD83**

**TR 44-24-597 Pad**

**Chevron TR 334-27-597 - Slot B5**

**OH**

**Plan: Plan #1 16Aug2016 jcsdi**

## **Standard Planning Report**

**25 August, 2016**



<b>Database:</b>	Grand Junction District	<b>Local Co-ordinate Reference:</b>	Well Chevron TR 334-27-597 - Slot B5
<b>Company:</b>	Terra Energy Partners	<b>TVD Reference:</b>	GL 8465' & RKB 24' @ 8489.00usft (H&P 318)
<b>Project:</b>	Garfield County, CO NAD83	<b>MD Reference:</b>	GL 8465' & RKB 24' @ 8489.00usft (H&P 318)
<b>Site:</b>	TR 44-24-597 Pad	<b>North Reference:</b>	True
<b>Well:</b>	Chevron TR 334-27-597	<b>Survey Calculation Method:</b>	Minimum Curvature
<b>Wellbore:</b>	OH		
<b>Design:</b>	Plan #1 16Aug2016 jcsdi		

<b>Project</b>	Garfield County, CO NAD83		
<b>Map System:</b>	US State Plane 1983	<b>System Datum:</b>	Mean Sea Level
<b>Geo Datum:</b>	North American Datum 1983		
<b>Map Zone:</b>	Colorado Central Zone		

<b>Site</b>	TR 44-24-597 Pad			
<b>Site Position:</b>		<b>Northing:</b>	1,647,210.50 usft	<b>Latitude:</b> 39.5780433
<b>From:</b> Map		<b>Easting:</b>	2,223,369.90 usft	<b>Longitude:</b> -108.2556853
<b>Position Uncertainty:</b>	0.00 usft	<b>Slot Radius:</b>	13.20 in	<b>Grid Convergence:</b> -1.74 °

<b>Well</b>	Chevron TR 334-27-597 - Slot B5			
<b>Well Position</b>	<b>+N/-S</b>	-28.51 usft	<b>Northing:</b>	1,647,183.10 usft
	<b>+E/-W</b>	-36.15 usft	<b>Easting:</b>	2,223,332.90 usft
<b>Position Uncertainty</b>	0.00 usft		<b>Wellhead Elevation:</b>	0.00 usft
			<b>Ground Level:</b>	8,465.00 usft

<b>Wellbore</b>	OH				
<b>Magnetics</b>	<b>Model Name</b>	<b>Sample Date</b>	<b>Declination (°)</b>	<b>Dip Angle (°)</b>	<b>Field Strength (nT)</b>
	BGGM2016	8/16/2016	9.81	65.66	51,630

<b>Design</b>	Plan #1 16Aug2016 jcsdi			
<b>Audit Notes:</b>				
<b>Version:</b>	<b>Phase:</b>	PLAN	<b>Tie On Depth:</b>	0.00
<b>Vertical Section:</b>	<b>Depth From (TVD) (usft)</b>	<b>+N/-S (usft)</b>	<b>+E/-W (usft)</b>	<b>Direction (°)</b>
	0.00	0.00	0.00	288.57

<b>Plan Sections</b>										
Measured Depth (usft)	Inclination (°)	Azimuth (°)	Vertical Depth (usft)	+N/-S (usft)	+E/-W (usft)	Dogleg Rate (°/100usft)	Build Rate (°/100usft)	Turn Rate (°/100usft)	TFO (°)	Target
0.00	0.00	0.00	0.00	0.00	0.00	0.00	0.00	0.00	0.00	
150.00	0.00	0.00	150.00	0.00	0.00	0.00	0.00	0.00	0.00	
316.67	5.00	275.00	316.46	0.63	-7.24	3.00	3.00	0.00	275.00	
466.67	5.00	275.00	465.88	1.77	-20.26	0.00	0.00	0.00	0.00	
1,144.56	25.16	288.89	1,117.19	51.53	-187.78	3.00	2.97	2.05	17.08	
5,044.46	25.16	288.89	4,647.16	588.35	-1,756.34	0.00	0.00	0.00	0.00	
6,302.33	0.00	0.00	5,865.00	676.34	-2,013.44	2.00	-2.00	0.00	180.00	TR 334-27-597 MVR
10,039.33	0.00	0.00	9,602.00	676.34	-2,013.44	0.00	0.00	0.00	0.00	TR 334-27-597 PBHL

<b>Database:</b>	Grand Junction District	<b>Local Co-ordinate Reference:</b>	Well Chevron TR 334-27-597 - Slot B5
<b>Company:</b>	Terra Energy Partners	<b>TVD Reference:</b>	GL 8465' & RKB 24' @ 8489.00usft (H&P 318)
<b>Project:</b>	Garfield County, CO NAD83	<b>MD Reference:</b>	GL 8465' & RKB 24' @ 8489.00usft (H&P 318)
<b>Site:</b>	TR 44-24-597 Pad	<b>North Reference:</b>	True
<b>Well:</b>	Chevron TR 334-27-597	<b>Survey Calculation Method:</b>	Minimum Curvature
<b>Wellbore:</b>	OH		
<b>Design:</b>	Plan #1 16Aug2016 jcsdi		

Planned Survey										
Measured Depth (usft)	Inclination (°)	Azimuth (°)	Vertical Depth (usft)	+N/-S (usft)	+E/-W (usft)	Vertical Section (usft)	Dogleg Rate (°/100usft)	Build Rate (°/100usft)	Turn Rate (°/100usft)	
0.00	0.00	0.00	0.00	0.00	0.00	0.00	0.00	0.00	0.00	
100.00	0.00	0.00	100.00	0.00	0.00	0.00	0.00	0.00	0.00	
150.00	0.00	0.00	150.00	0.00	0.00	0.00	0.00	0.00	0.00	
200.00	1.50	275.00	199.99	0.06	-0.65	0.64	3.00	3.00	0.00	
300.00	4.50	275.00	299.85	0.51	-5.87	5.72	3.00	3.00	0.00	
316.67	5.00	275.00	316.46	0.63	-7.24	7.06	3.00	3.00	0.00	
400.00	5.00	275.00	399.47	1.27	-14.48	14.13	0.00	0.00	0.00	
466.67	5.00	275.00	465.88	1.77	-20.26	19.77	0.00	0.00	0.00	
500.00	5.96	277.83	499.06	2.14	-23.43	22.89	3.00	2.89	8.48	
600.00	8.90	282.61	598.21	4.53	-36.12	35.69	3.00	2.94	4.78	
700.00	11.87	285.02	696.57	8.89	-53.61	53.65	3.00	2.97	2.41	
800.00	14.85	286.48	793.85	15.19	-75.84	76.73	3.00	2.98	1.46	
900.00	17.84	287.45	889.80	23.42	-102.75	104.86	3.00	2.99	0.98	
1,000.00	20.83	288.16	984.15	33.56	-134.26	137.96	3.00	2.99	0.70	
1,100.00	23.82	288.69	1,076.64	45.58	-170.29	175.94	3.00	2.99	0.53	
1,144.56	25.16	288.89	1,117.19	51.53	-187.78	194.41	3.00	2.99	0.45	
1,200.00	25.16	288.89	1,167.37	59.16	-210.08	217.98	0.00	0.00	0.00	
1,300.00	25.16	288.89	1,257.88	72.92	-250.30	260.49	0.00	0.00	0.00	
1,400.00	25.16	288.89	1,348.40	86.69	-290.52	303.00	0.00	0.00	0.00	
1,500.00	25.16	288.89	1,438.91	100.45	-330.74	345.51	0.00	0.00	0.00	
1,600.00	25.16	288.89	1,529.43	114.22	-370.96	388.02	0.00	0.00	0.00	
1,700.00	25.16	288.89	1,619.94	127.98	-411.18	430.53	0.00	0.00	0.00	
1,800.00	25.16	288.89	1,710.46	141.75	-451.40	473.04	0.00	0.00	0.00	
1,900.00	25.16	288.89	1,800.97	155.51	-491.62	515.55	0.00	0.00	0.00	
2,000.00	25.16	288.89	1,891.48	169.28	-531.84	558.06	0.00	0.00	0.00	
2,100.00	25.16	288.89	1,982.00	183.04	-572.06	600.57	0.00	0.00	0.00	
2,200.00	25.16	288.89	2,072.51	196.81	-612.28	643.08	0.00	0.00	0.00	
2,300.00	25.16	288.89	2,163.03	210.57	-652.50	685.59	0.00	0.00	0.00	
2,400.00	25.16	288.89	2,253.54	224.34	-692.72	728.10	0.00	0.00	0.00	
2,500.00	25.16	288.89	2,344.06	238.10	-732.94	770.61	0.00	0.00	0.00	
2,534.19	25.16	288.89	2,375.00	242.81	-746.69	785.14	0.00	0.00	0.00	
Wasatch										
2,600.00	25.16	288.89	2,434.57	251.87	-773.16	813.12	0.00	0.00	0.00	
2,700.00	25.16	288.89	2,525.09	265.63	-813.38	855.63	0.00	0.00	0.00	
2,784.00	25.16	288.89	2,601.12	277.20	-847.17	891.34	0.00	0.00	0.00	
9 5/8" Surface Casing										
2,800.00	25.16	288.89	2,615.60	279.40	-853.60	898.14	0.00	0.00	0.00	
2,900.00	25.16	288.89	2,706.11	293.16	-893.82	940.65	0.00	0.00	0.00	
3,000.00	25.16	288.89	2,796.63	306.93	-934.05	983.16	0.00	0.00	0.00	
3,100.00	25.16	288.89	2,887.14	320.69	-974.27	1,025.67	0.00	0.00	0.00	
3,200.00	25.16	288.89	2,977.66	334.46	-1,014.49	1,068.18	0.00	0.00	0.00	
3,300.00	25.16	288.89	3,068.17	348.22	-1,054.71	1,110.69	0.00	0.00	0.00	
3,400.00	25.16	288.89	3,158.69	361.99	-1,094.93	1,153.20	0.00	0.00	0.00	
3,500.00	25.16	288.89	3,249.20	375.76	-1,135.15	1,195.71	0.00	0.00	0.00	
3,600.00	25.16	288.89	3,339.71	389.52	-1,175.37	1,238.22	0.00	0.00	0.00	
3,700.00	25.16	288.89	3,430.23	403.29	-1,215.59	1,280.73	0.00	0.00	0.00	
3,800.00	25.16	288.89	3,520.74	417.05	-1,255.81	1,323.24	0.00	0.00	0.00	
3,900.00	25.16	288.89	3,611.26	430.82	-1,296.03	1,365.75	0.00	0.00	0.00	
4,000.00	25.16	288.89	3,701.77	444.58	-1,336.25	1,408.26	0.00	0.00	0.00	
4,100.00	25.16	288.89	3,792.29	458.35	-1,376.47	1,450.77	0.00	0.00	0.00	
4,200.00	25.16	288.89	3,882.80	472.11	-1,416.69	1,493.28	0.00	0.00	0.00	
4,300.00	25.16	288.89	3,973.31	485.88	-1,456.91	1,535.79	0.00	0.00	0.00	

<b>Database:</b>	Grand Junction District	<b>Local Co-ordinate Reference:</b>	Well Chevron TR 334-27-597 - Slot B5
<b>Company:</b>	Terra Energy Partners	<b>TVD Reference:</b>	GL 8465' & RKB 24' @ 8489.00usft (H&P 318)
<b>Project:</b>	Garfield County, CO NAD83	<b>MD Reference:</b>	GL 8465' & RKB 24' @ 8489.00usft (H&P 318)
<b>Site:</b>	TR 44-24-597 Pad	<b>North Reference:</b>	True
<b>Well:</b>	Chevron TR 334-27-597	<b>Survey Calculation Method:</b>	Minimum Curvature
<b>Wellbore:</b>	OH		
<b>Design:</b>	Plan #1 16Aug2016 jcsdi		

Planned Survey										
Measured Depth (usft)	Inclination (°)	Azimuth (°)	Vertical Depth (usft)	+N/-S (usft)	+E/-W (usft)	Vertical Section (usft)	Dogleg Rate (°/100usft)	Build Rate (°/100usft)	Turn Rate (°/100usft)	
4,400.00	25.16	288.89	4,063.83	499.64	-1,497.13	1,578.30	0.00	0.00	0.00	
4,500.00	25.16	288.89	4,154.34	513.41	-1,537.35	1,620.81	0.00	0.00	0.00	
4,558.18	25.16	288.89	4,207.00	521.41	-1,560.75	1,645.54	0.00	0.00	0.00	
<b>Top "G" Sand</b>										
4,583.59	25.16	288.89	4,230.00	524.91	-1,570.97	1,656.34	0.00	0.00	0.00	
<b>Base "G" Sand</b>										
4,600.00	25.16	288.89	4,244.86	527.17	-1,577.57	1,663.32	0.00	0.00	0.00	
4,700.00	25.16	288.89	4,335.37	540.94	-1,617.79	1,705.83	0.00	0.00	0.00	
4,758.14	25.16	288.89	4,388.00	548.94	-1,641.18	1,730.55	0.00	0.00	0.00	
<b>Fort Union</b>										
4,800.00	25.16	288.89	4,425.89	554.70	-1,658.01	1,748.34	0.00	0.00	0.00	
4,900.00	25.16	288.89	4,516.40	568.47	-1,698.23	1,790.85	0.00	0.00	0.00	
5,000.00	25.16	288.89	4,606.91	582.23	-1,738.45	1,833.36	0.00	0.00	0.00	
5,044.46	25.16	288.89	4,647.16	588.35	-1,756.34	1,852.26	0.00	0.00	0.00	
5,100.00	24.05	288.89	4,697.65	595.84	-1,778.21	1,875.38	2.00	-2.00	0.00	
5,200.00	22.05	288.89	4,789.67	608.51	-1,815.25	1,914.53	2.00	-2.00	0.00	
5,300.00	20.05	288.89	4,882.99	620.14	-1,849.22	1,950.44	2.00	-2.00	0.00	
5,400.00	18.05	288.89	4,977.51	630.71	-1,880.10	1,983.07	2.00	-2.00	0.00	
5,500.00	16.05	288.89	5,073.12	640.20	-1,907.83	2,012.38	2.00	-2.00	0.00	
5,600.00	14.05	288.89	5,169.68	648.61	-1,932.39	2,038.34	2.00	-2.00	0.00	
5,700.00	12.05	288.89	5,267.10	655.91	-1,953.75	2,060.91	2.00	-2.00	0.00	
5,800.00	10.05	288.89	5,365.24	662.12	-1,971.88	2,080.07	2.00	-2.00	0.00	
5,900.00	8.05	288.89	5,463.99	667.21	-1,986.75	2,095.80	2.00	-2.00	0.00	
6,000.00	6.05	288.89	5,563.23	671.18	-1,998.36	2,108.06	2.00	-2.00	0.00	
6,100.00	4.05	288.89	5,662.84	674.03	-2,006.68	2,116.86	2.00	-2.00	0.00	
6,196.31	2.12	288.89	5,759.00	675.71	-2,011.58	2,122.04	2.00	-2.00	0.00	
<b>Ohio Creek</b>										
6,200.00	2.05	288.89	5,762.69	675.75	-2,011.71	2,122.17	2.00	-2.00	0.00	
6,300.00	0.05	288.89	5,862.67	676.34	-2,013.44	2,124.00	2.00	-2.00	0.00	
6,302.33	0.00	0.00	5,865.00	676.34	-2,013.44	2,124.00	2.00	-2.00	0.00	
<b>Mesaverde - TR 334-27-597 MVRD</b>										
6,400.00	0.00	0.00	5,962.67	676.34	-2,013.44	2,124.00	0.00	0.00	0.00	
6,500.00	0.00	0.00	6,062.67	676.34	-2,013.44	2,124.00	0.00	0.00	0.00	
6,600.00	0.00	0.00	6,162.67	676.34	-2,013.44	2,124.00	0.00	0.00	0.00	
6,700.00	0.00	0.00	6,262.67	676.34	-2,013.44	2,124.00	0.00	0.00	0.00	
6,800.00	0.00	0.00	6,362.67	676.34	-2,013.44	2,124.00	0.00	0.00	0.00	
6,900.00	0.00	0.00	6,462.67	676.34	-2,013.44	2,124.00	0.00	0.00	0.00	
7,000.00	0.00	0.00	6,562.67	676.34	-2,013.44	2,124.00	0.00	0.00	0.00	
7,043.33	0.00	0.00	6,606.00	676.34	-2,013.44	2,124.00	0.00	0.00	0.00	
<b>Top Gas</b>										
7,100.00	0.00	0.00	6,662.67	676.34	-2,013.44	2,124.00	0.00	0.00	0.00	
7,200.00	0.00	0.00	6,762.67	676.34	-2,013.44	2,124.00	0.00	0.00	0.00	
7,300.00	0.00	0.00	6,862.67	676.34	-2,013.44	2,124.00	0.00	0.00	0.00	
7,400.00	0.00	0.00	6,962.67	676.34	-2,013.44	2,124.00	0.00	0.00	0.00	
7,500.00	0.00	0.00	7,062.67	676.34	-2,013.44	2,124.00	0.00	0.00	0.00	
7,600.00	0.00	0.00	7,162.67	676.34	-2,013.44	2,124.00	0.00	0.00	0.00	
7,700.00	0.00	0.00	7,262.67	676.34	-2,013.44	2,124.00	0.00	0.00	0.00	
7,800.00	0.00	0.00	7,362.67	676.34	-2,013.44	2,124.00	0.00	0.00	0.00	
7,900.00	0.00	0.00	7,462.67	676.34	-2,013.44	2,124.00	0.00	0.00	0.00	
8,000.00	0.00	0.00	7,562.67	676.34	-2,013.44	2,124.00	0.00	0.00	0.00	
8,100.00	0.00	0.00	7,662.67	676.34	-2,013.44	2,124.00	0.00	0.00	0.00	

<b>Database:</b>	Grand Junction District	<b>Local Co-ordinate Reference:</b>	Well Chevron TR 334-27-597 - Slot B5
<b>Company:</b>	Terra Energy Partners	<b>TVD Reference:</b>	GL 8465' & RKB 24' @ 8489.00usft (H&P 318)
<b>Project:</b>	Garfield County, CO NAD83	<b>MD Reference:</b>	GL 8465' & RKB 24' @ 8489.00usft (H&P 318)
<b>Site:</b>	TR 44-24-597 Pad	<b>North Reference:</b>	True
<b>Well:</b>	Chevron TR 334-27-597	<b>Survey Calculation Method:</b>	Minimum Curvature
<b>Wellbore:</b>	OH		
<b>Design:</b>	Plan #1 16Aug2016 jcsdi		

Planned Survey									
Measured Depth (usft)	Inclination (°)	Azimuth (°)	Vertical Depth (usft)	+N/-S (usft)	+E/-W (usft)	Vertical Section (usft)	Dogleg Rate (°/100usft)	Build Rate (°/100usft)	Turn Rate (°/100usft)
8,200.00	0.00	0.00	7,762.67	676.34	-2,013.44	2,124.00	0.00	0.00	0.00
8,300.00	0.00	0.00	7,862.67	676.34	-2,013.44	2,124.00	0.00	0.00	0.00
8,400.00	0.00	0.00	7,962.67	676.34	-2,013.44	2,124.00	0.00	0.00	0.00
8,500.00	0.00	0.00	8,062.67	676.34	-2,013.44	2,124.00	0.00	0.00	0.00
8,600.00	0.00	0.00	8,162.67	676.34	-2,013.44	2,124.00	0.00	0.00	0.00
8,696.33	0.00	0.00	8,259.00	676.34	-2,013.44	2,124.00	0.00	0.00	0.00
<b>Cameo Coals</b>									
8,700.00	0.00	0.00	8,262.67	676.34	-2,013.44	2,124.00	0.00	0.00	0.00
8,800.00	0.00	0.00	8,362.67	676.34	-2,013.44	2,124.00	0.00	0.00	0.00
8,900.00	0.00	0.00	8,462.67	676.34	-2,013.44	2,124.00	0.00	0.00	0.00
9,000.00	0.00	0.00	8,562.67	676.34	-2,013.44	2,124.00	0.00	0.00	0.00
9,100.00	0.00	0.00	8,662.67	676.34	-2,013.44	2,124.00	0.00	0.00	0.00
9,125.33	0.00	0.00	8,688.00	676.34	-2,013.44	2,124.00	0.00	0.00	0.00
<b>Rollins SS</b>									
9,200.00	0.00	0.00	8,762.67	676.34	-2,013.44	2,124.00	0.00	0.00	0.00
9,300.00	0.00	0.00	8,862.67	676.34	-2,013.44	2,124.00	0.00	0.00	0.00
9,317.33	0.00	0.00	8,880.00	676.34	-2,013.44	2,124.00	0.00	0.00	0.00
<b>Cozzette</b>									
9,400.00	0.00	0.00	8,962.67	676.34	-2,013.44	2,124.00	0.00	0.00	0.00
9,500.00	0.00	0.00	9,062.67	676.34	-2,013.44	2,124.00	0.00	0.00	0.00
9,566.33	0.00	0.00	9,129.00	676.34	-2,013.44	2,124.00	0.00	0.00	0.00
<b>Corcoran</b>									
9,600.00	0.00	0.00	9,162.67	676.34	-2,013.44	2,124.00	0.00	0.00	0.00
9,700.00	0.00	0.00	9,262.67	676.34	-2,013.44	2,124.00	0.00	0.00	0.00
9,739.33	0.00	0.00	9,302.00	676.34	-2,013.44	2,124.00	0.00	0.00	0.00
<b>Sego</b>									
9,800.00	0.00	0.00	9,362.67	676.34	-2,013.44	2,124.00	0.00	0.00	0.00
9,900.00	0.00	0.00	9,462.67	676.34	-2,013.44	2,124.00	0.00	0.00	0.00
10,000.00	0.00	0.00	9,562.67	676.34	-2,013.44	2,124.00	0.00	0.00	0.00
10,039.33	0.00	0.00	9,602.00	676.34	-2,013.44	2,124.00	0.00	0.00	0.00
<b>TR 334-27-597 PBHL</b>									

Design Targets									
Target Name	Dip Angle (°)	Dip Dir. (°)	TVD (usft)	+N/-S (usft)	+E/-W (usft)	Northing (usft)	Easting (usft)	Latitude	Longitude
TR 334-27-597 MVRD	0.00	0.00	5,865.00	676.34	-2,013.44	1,647,920.20	2,221,340.90	39.5798217	-108.2629569
- hit/miss target									
- Shape									
- plan hits target center									
- Circle (radius 25.00)									
TR 334-27-597 PBHL	0.00	0.00	9,602.00	676.34	-2,013.44	1,647,920.20	2,221,340.90	39.5798217	-108.2629569
- plan hits target center									
- Point									

<b>Database:</b>	Grand Junction District	<b>Local Co-ordinate Reference:</b>	Well Chevron TR 334-27-597 - Slot B5
<b>Company:</b>	Terra Energy Partners	<b>TVD Reference:</b>	GL 8465' & RKB 24' @ 8489.00usft (H&P 318)
<b>Project:</b>	Garfield County, CO NAD83	<b>MD Reference:</b>	GL 8465' & RKB 24' @ 8489.00usft (H&P 318)
<b>Site:</b>	TR 44-24-597 Pad	<b>North Reference:</b>	True
<b>Well:</b>	Chevron TR 334-27-597	<b>Survey Calculation Method:</b>	Minimum Curvature
<b>Wellbore:</b>	OH		
<b>Design:</b>	Plan #1 16Aug2016 jcsdi		

Casing Points					
Measured Depth (usft)	Vertical Depth (usft)	Name	Casing Diameter (in)	Hole Diameter (in)	
2,784.00	2,601.12	9 5/8" Surface Casing	9.62	13.50	

Formations					
Measured Depth (usft)	Vertical Depth (usft)	Name	Lithology	Dip (°)	Dip Direction (°)
2,534.19	2,375.00	Wasatch		0.00	0.00
4,558.18	4,207.00	Top "G" Sand		0.00	0.00
4,583.59	4,230.00	Base "G" Sand		0.00	0.00
4,758.14	4,388.00	Fort Union		0.00	0.00
6,196.31	5,759.00	Ohio Creek		0.00	0.00
6,302.33	5,865.00	Mesaverde		0.00	0.00
7,043.33	6,606.00	Top Gas		0.00	0.00
8,696.33	8,259.00	Cameo Coals		0.00	0.00
9,125.33	8,688.00	Rollins SS		0.00	0.00
9,317.33	8,880.00	Cozzette		0.00	0.00
9,566.33	9,129.00	Corcoran		0.00	0.00
9,739.33	9,302.00	Sego		0.00	0.00