

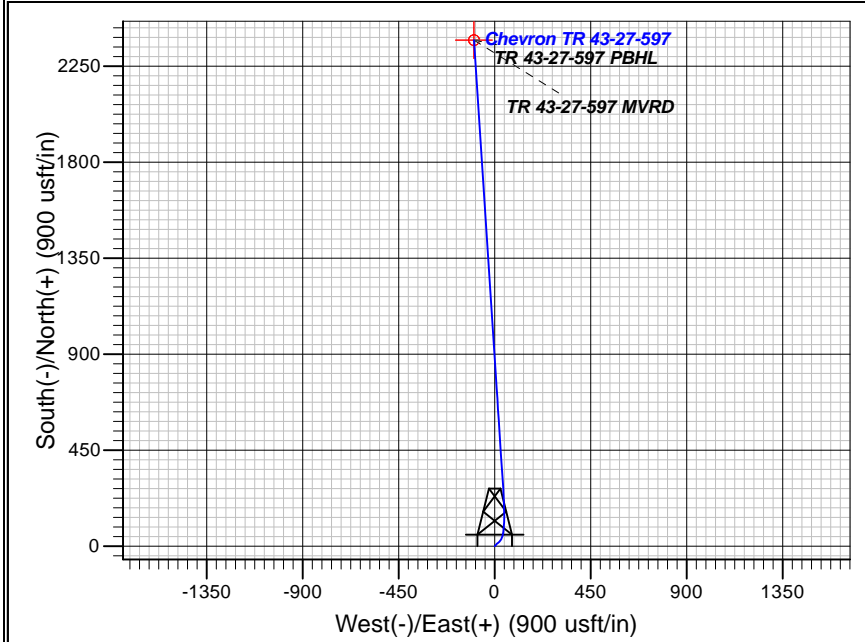
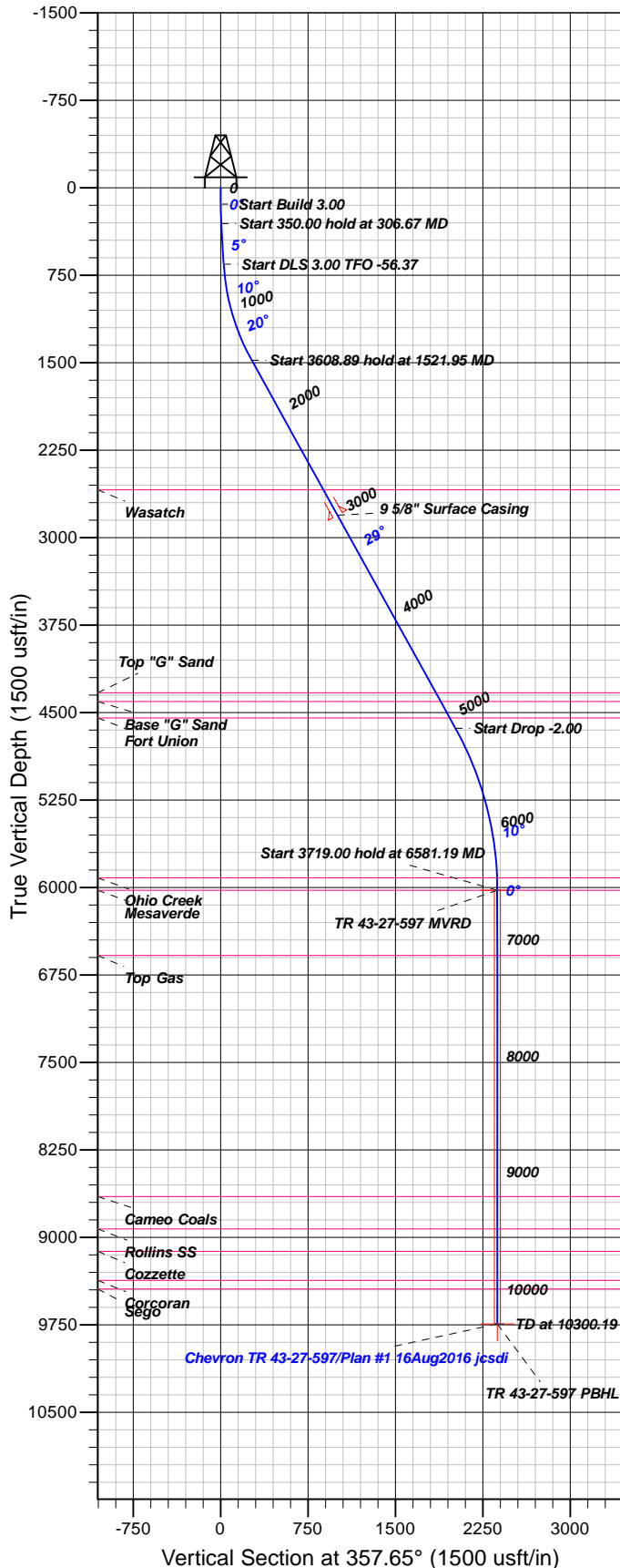
Well Details: Chevron TR 43-27-597

GL 8465' & RKB 24' @ 8489.00usft (H&P 318)

+N/-S	+E/-W	Northing	Easting	Latitude	Longitude	Slot
0.00	0.00	1647210.50	2223369.90	39.5780433	-108.2556853	A11

T M Azimuths to True North
Magnetic North: 9.81°

Magnetic Field
Strength: 51629.7snT
Dip Angle: 65.66°
Date: 8/16/2016
Model: BGGM2016



FORMATION TOP DETAILS

TVDPath	MDPath	Formation
2591.00	2793.87	Wasatch
4330.00	4782.30	Top "G" Sand
4405.00	4868.06	Base "G" Sand
4547.00	5030.42	Fort Union
5918.00	6475.16	Ohio Creek
6024.00	6581.19	Mesaverde
6582.00	7139.19	Top Gas
8651.00	9208.19	Cameo Coals
8928.00	9485.19	Rollins SS
9120.00	9677.19	Cozzette
9369.00	9926.19	Corcoran
9443.00	10000.19	Sego

Plan: Plan #1 16Aug2016 jcsdi

11:50, August 25 2016
Created By: Janie Collins

PROJECT DETAILS: Garfield County, CO NAD83

Geodetic System: US State Plane 1983
Datum: North American Datum 1983
Ellipsoid: GRS 1980
Zone: Colorado Central Zone

System Datum: Mean Sea Level

CASING DETAILS

TVD	MD	Name	Size
2808.88	3043.09	5/8" Surface Casing	9.62

SECTION DETAILS

Sec	MD	Inc	Azi	TVD	+N/-S	+E/-W	Dleg	TFace	VSec	Target
1	0.00	0.00	0.00	0.00	0.00	0.00	0.00	0.00	0.00	
2	140.00	0.00	0.00	140.00	0.00	0.00	0.00	0.00	0.00	
3	306.67	5.00	45.00	306.46	5.14	5.14	3.00	45.00	4.92	
4	656.67	5.00	45.00	655.12	26.71	26.71	0.00	0.00	25.59	
5	1521.95	29.01	356.27	1478.62	266.84	39.96	3.00	-56.37	264.98	
6	5130.84	29.01	356.27	4634.82	2013.15	-73.81	0.00	0.00	2014.48	
7	6581.19	0.00	0.00	6024.00	2371.74	-97.18	2.00	180.00	2373.73	TR 43-27-597 MVRD
8	10300.19	0.00	0.00	9743.00	2371.74	-97.18	0.00	0.00	2373.73	TR 43-27-597 PBHL

DESIGN TARGET DETAILS

Name	TVD	+N/-S	+E/-W	Northing	Easting	Latitude	Longitude	Shape
TR 43-27-597 MVRD	6024.00	2371.74	-97.18	1649584.10	2223344.70	39.5845546	-108.2560301	Circle (Radius: 25.00)
- plan hits target center								
TR 43-27-597 PBHL	9743.00	2371.74	-97.18	1649584.10	2223344.70	39.5845546	-108.2560301	Point
- plan hits target center								



Terra Energy Partners

Garfield County, CO NAD83

TR 44-24-597 Pad

Chevron TR 43-27-597 - Slot A11

OH

Plan: Plan #1 16Aug2016 jcsdi

Standard Planning Report

25 August, 2016



Database:	Grand Junction District	Local Co-ordinate Reference:	Well Chevron TR 43-27-597 - Slot A11
Company:	Terra Energy Partners	TVD Reference:	GL 8465' & RKB 24' @ 8489.00usft (H&P 318)
Project:	Garfield County, CO NAD83	MD Reference:	GL 8465' & RKB 24' @ 8489.00usft (H&P 318)
Site:	TR 44-24-597 Pad	North Reference:	True
Well:	Chevron TR 43-27-597	Survey Calculation Method:	Minimum Curvature
Wellbore:	OH		
Design:	Plan #1 16Aug2016 jcsdi		

Project	Garfield County, CO NAD83		
Map System:	US State Plane 1983	System Datum:	Mean Sea Level
Geo Datum:	North American Datum 1983		
Map Zone:	Colorado Central Zone		

Site	TR 44-24-597 Pad			
Site Position:		Northing:	1,647,210.50 usft	Latitude: 39.5780433
From: Map		Easting:	2,223,369.90 usft	Longitude: -108.2556853
Position Uncertainty:	0.00 usft	Slot Radius:	13.20 in	Grid Convergence: -1.74 °

Well	Chevron TR 43-27-597 - Slot A11			
Well Position	+N/-S	0.00 usft	Northing:	1,647,210.50 usft
	+E/-W	0.00 usft	Easting:	2,223,369.90 usft
Position Uncertainty	0.00 usft		Wellhead Elevation:	0.00 usft
			Ground Level:	8,465.00 usft

Wellbore	OH				
Magnetics	Model Name	Sample Date	Declination (°)	Dip Angle (°)	Field Strength (nT)
	BGGM2016	8/16/2016	9.81	65.66	51,630

Design	Plan #1 16Aug2016 jcsdi			
Audit Notes:				
Version:	Phase:	PLAN	Tie On Depth:	0.00
Vertical Section:	Depth From (TVD) (usft)	+N/-S (usft)	+E/-W (usft)	Direction (°)
	0.00	0.00	0.00	357.65

Plan Sections										
Measured Depth (usft)	Inclination (°)	Azimuth (°)	Vertical Depth (usft)	+N/-S (usft)	+E/-W (usft)	Dogleg Rate (°/100usft)	Build Rate (°/100usft)	Turn Rate (°/100usft)	TFO (°)	Target
0.00	0.00	0.00	0.00	0.00	0.00	0.00	0.00	0.00	0.00	
140.00	0.00	0.00	140.00	0.00	0.00	0.00	0.00	0.00	0.00	
306.67	5.00	45.00	306.46	5.14	5.14	3.00	3.00	0.00	45.00	
656.67	5.00	45.00	655.12	26.71	26.71	0.00	0.00	0.00	0.00	
1,521.95	29.01	356.27	1,478.62	266.84	39.96	3.00	2.77	-5.63	-56.37	
5,130.84	29.01	356.27	4,634.82	2,013.15	-73.81	0.00	0.00	0.00	0.00	
6,581.19	0.00	0.00	6,024.00	2,371.74	-97.18	2.00	-2.00	0.00	180.00	TR 43-27-597 MVRD
10,300.19	0.00	0.00	9,743.00	2,371.74	-97.18	0.00	0.00	0.00	0.00	TR 43-27-597 PBHL

Database:	Grand Junction District	Local Co-ordinate Reference:	Well Chevron TR 43-27-597 - Slot A11
Company:	Terra Energy Partners	TVD Reference:	GL 8465' & RKB 24' @ 8489.00usft (H&P 318)
Project:	Garfield County, CO NAD83	MD Reference:	GL 8465' & RKB 24' @ 8489.00usft (H&P 318)
Site:	TR 44-24-597 Pad	North Reference:	True
Well:	Chevron TR 43-27-597	Survey Calculation Method:	Minimum Curvature
Wellbore:	OH		
Design:	Plan #1 16Aug2016 jcsdi		

Planned Survey										
Measured Depth (usft)	Inclination (°)	Azimuth (°)	Vertical Depth (usft)	+N/-S (usft)	+E/-W (usft)	Vertical Section (usft)	Dogleg Rate (°/100usft)	Build Rate (°/100usft)	Turn Rate (°/100usft)	
0.00	0.00	0.00	0.00	0.00	0.00	0.00	0.00	0.00	0.00	
100.00	0.00	0.00	100.00	0.00	0.00	0.00	0.00	0.00	0.00	
140.00	0.00	0.00	140.00	0.00	0.00	0.00	0.00	0.00	0.00	
200.00	1.80	45.00	199.99	0.67	0.67	0.64	3.00	3.00	0.00	
300.00	4.80	45.00	299.81	4.74	4.74	4.54	3.00	3.00	0.00	
306.67	5.00	45.00	306.46	5.14	5.14	4.92	3.00	3.00	0.00	
400.00	5.00	45.00	399.43	10.89	10.89	10.44	0.00	0.00	0.00	
500.00	5.00	45.00	499.05	17.05	17.05	16.34	0.00	0.00	0.00	
600.00	5.00	45.00	598.67	23.22	23.22	22.25	0.00	0.00	0.00	
656.67	5.00	45.00	655.12	26.71	26.71	25.59	0.00	0.00	0.00	
700.00	5.82	34.27	698.26	29.86	29.28	28.64	3.00	1.90	-24.77	
800.00	8.20	19.05	797.52	40.80	34.47	39.35	3.00	2.38	-15.22	
900.00	10.89	10.95	896.13	56.82	38.59	55.19	3.00	2.69	-8.10	
1,000.00	13.71	6.09	993.83	77.88	41.64	76.11	3.00	2.82	-4.87	
1,100.00	16.59	2.87	1,090.34	103.93	43.61	102.06	3.00	2.88	-3.22	
1,200.00	19.51	0.58	1,185.41	134.89	44.50	132.95	3.00	2.92	-2.28	
1,300.00	22.44	358.88	1,278.78	170.68	44.29	168.72	3.00	2.94	-1.71	
1,400.00	25.40	357.55	1,370.18	211.19	43.00	209.26	3.00	2.95	-1.33	
1,500.00	28.36	356.48	1,459.37	256.33	40.63	254.45	3.00	2.96	-1.07	
1,521.95	29.01	356.27	1,478.62	266.84	39.96	264.98	3.00	2.97	-0.95	
1,600.00	29.01	356.27	1,546.88	304.61	37.50	302.82	0.00	0.00	0.00	
1,700.00	29.01	356.27	1,634.34	353.00	34.35	351.30	0.00	0.00	0.00	
1,800.00	29.01	356.27	1,721.80	401.39	31.19	399.78	0.00	0.00	0.00	
1,900.00	29.01	356.27	1,809.25	449.78	28.04	448.25	0.00	0.00	0.00	
2,000.00	29.01	356.27	1,896.71	498.17	24.89	496.73	0.00	0.00	0.00	
2,100.00	29.01	356.27	1,984.16	546.56	21.74	545.21	0.00	0.00	0.00	
2,200.00	29.01	356.27	2,071.62	594.95	18.58	593.69	0.00	0.00	0.00	
2,300.00	29.01	356.27	2,159.08	643.33	15.43	642.16	0.00	0.00	0.00	
2,400.00	29.01	356.27	2,246.53	691.72	12.28	690.64	0.00	0.00	0.00	
2,500.00	29.01	356.27	2,333.99	740.11	9.13	739.12	0.00	0.00	0.00	
2,600.00	29.01	356.27	2,421.45	788.50	5.97	787.60	0.00	0.00	0.00	
2,700.00	29.01	356.27	2,508.90	836.89	2.82	836.07	0.00	0.00	0.00	
2,793.87	29.01	356.27	2,591.00	882.32	-0.14	881.58	0.00	0.00	0.00	
Wasatch										
2,800.00	29.01	356.27	2,596.36	885.28	-0.33	884.55	0.00	0.00	0.00	
2,900.00	29.01	356.27	2,683.81	933.67	-3.48	933.03	0.00	0.00	0.00	
3,000.00	29.01	356.27	2,771.27	982.06	-6.64	981.51	0.00	0.00	0.00	
3,043.00	29.01	356.27	2,808.88	1,002.86	-7.99	1,002.35	0.00	0.00	0.00	
9 5/8" Surface Casing										
3,100.00	29.01	356.27	2,858.73	1,030.45	-9.79	1,029.98	0.00	0.00	0.00	
3,200.00	29.01	356.27	2,946.18	1,078.84	-12.94	1,078.46	0.00	0.00	0.00	
3,300.00	29.01	356.27	3,033.64	1,127.22	-16.09	1,126.94	0.00	0.00	0.00	
3,400.00	29.01	356.27	3,121.09	1,175.61	-19.25	1,175.42	0.00	0.00	0.00	
3,500.00	29.01	356.27	3,208.55	1,224.00	-22.40	1,223.89	0.00	0.00	0.00	
3,600.00	29.01	356.27	3,296.01	1,272.39	-25.55	1,272.37	0.00	0.00	0.00	
3,700.00	29.01	356.27	3,383.46	1,320.78	-28.71	1,320.85	0.00	0.00	0.00	
3,800.00	29.01	356.27	3,470.92	1,369.17	-31.86	1,369.33	0.00	0.00	0.00	
3,900.00	29.01	356.27	3,558.38	1,417.56	-35.01	1,417.80	0.00	0.00	0.00	
4,000.00	29.01	356.27	3,645.83	1,465.95	-38.16	1,466.28	0.00	0.00	0.00	
4,100.00	29.01	356.27	3,733.29	1,514.34	-41.32	1,514.76	0.00	0.00	0.00	
4,200.00	29.01	356.27	3,820.74	1,562.72	-44.47	1,563.23	0.00	0.00	0.00	
4,300.00	29.01	356.27	3,908.20	1,611.11	-47.62	1,611.71	0.00	0.00	0.00	

Database:	Grand Junction District	Local Co-ordinate Reference:	Well Chevron TR 43-27-597 - Slot A11
Company:	Terra Energy Partners	TVD Reference:	GL 8465' & RKB 24' @ 8489.00usft (H&P 318)
Project:	Garfield County, CO NAD83	MD Reference:	GL 8465' & RKB 24' @ 8489.00usft (H&P 318)
Site:	TR 44-24-597 Pad	North Reference:	True
Well:	Chevron TR 43-27-597	Survey Calculation Method:	Minimum Curvature
Wellbore:	OH		
Design:	Plan #1 16Aug2016 jcsdi		

Planned Survey									
Measured Depth (usft)	Inclination (°)	Azimuth (°)	Vertical Depth (usft)	+N/-S (usft)	+E/-W (usft)	Vertical Section (usft)	Dogleg Rate (°/100usft)	Build Rate (°/100usft)	Turn Rate (°/100usft)
4,400.00	29.01	356.27	3,995.66	1,659.50	-50.77	1,660.19	0.00	0.00	0.00
4,500.00	29.01	356.27	4,083.11	1,707.89	-53.93	1,708.67	0.00	0.00	0.00
4,600.00	29.01	356.27	4,170.57	1,756.28	-57.08	1,757.14	0.00	0.00	0.00
4,700.00	29.01	356.27	4,258.02	1,804.67	-60.23	1,805.62	0.00	0.00	0.00
4,782.30	29.01	356.27	4,330.00	1,844.49	-62.83	1,845.52	0.00	0.00	0.00
Top "G" Sand									
4,800.00	29.01	356.27	4,345.48	1,853.06	-63.38	1,854.10	0.00	0.00	0.00
4,868.06	29.01	356.27	4,405.00	1,885.99	-65.53	1,887.09	0.00	0.00	0.00
Base "G" Sand									
4,900.00	29.01	356.27	4,432.94	1,901.45	-66.54	1,902.58	0.00	0.00	0.00
5,000.00	29.01	356.27	4,520.39	1,949.84	-69.69	1,951.05	0.00	0.00	0.00
5,030.42	29.01	356.27	4,547.00	1,964.56	-70.65	1,965.80	0.00	0.00	0.00
Fort Union									
5,100.00	29.01	356.27	4,607.85	1,998.22	-72.84	1,999.53	0.00	0.00	0.00
5,130.84	29.01	356.27	4,634.82	2,013.15	-73.81	2,014.48	0.00	0.00	0.00
5,200.00	27.62	356.27	4,695.70	2,045.88	-75.95	2,047.28	2.00	-2.00	0.00
5,300.00	25.62	356.27	4,785.10	2,090.60	-78.86	2,092.07	2.00	-2.00	0.00
5,400.00	23.62	356.27	4,876.00	2,132.17	-81.57	2,133.73	2.00	-2.00	0.00
5,500.00	21.62	356.27	4,968.30	2,170.56	-84.07	2,172.18	2.00	-2.00	0.00
5,600.00	19.62	356.27	5,061.88	2,205.70	-86.36	2,207.39	2.00	-2.00	0.00
5,700.00	17.62	356.27	5,156.64	2,237.57	-88.44	2,239.32	2.00	-2.00	0.00
5,800.00	15.62	356.27	5,252.46	2,266.12	-90.30	2,267.91	2.00	-2.00	0.00
5,900.00	13.62	356.27	5,349.21	2,291.31	-91.94	2,293.15	2.00	-2.00	0.00
6,000.00	11.62	356.27	5,446.79	2,313.12	-93.36	2,315.00	2.00	-2.00	0.00
6,100.00	9.62	356.27	5,545.07	2,331.51	-94.56	2,333.43	2.00	-2.00	0.00
6,200.00	7.62	356.27	5,643.94	2,346.47	-95.53	2,348.42	2.00	-2.00	0.00
6,300.00	5.62	356.27	5,743.27	2,357.98	-96.28	2,359.95	2.00	-2.00	0.00
6,400.00	3.62	356.27	5,842.93	2,366.03	-96.80	2,368.01	2.00	-2.00	0.00
6,475.16	2.12	356.27	5,918.00	2,369.79	-97.05	2,371.77	2.00	-2.00	0.00
Ohio Creek									
6,500.00	1.62	356.27	5,942.82	2,370.60	-97.10	2,372.58	2.00	-2.00	0.00
6,581.19	0.00	0.00	6,024.00	2,371.74	-97.18	2,373.73	2.00	-2.00	0.00
Mesaverde - TR 43-27-597 MVRD									
6,600.00	0.00	0.00	6,042.81	2,371.74	-97.18	2,373.73	0.00	0.00	0.00
6,700.00	0.00	0.00	6,142.81	2,371.74	-97.18	2,373.73	0.00	0.00	0.00
6,800.00	0.00	0.00	6,242.81	2,371.74	-97.18	2,373.73	0.00	0.00	0.00
6,900.00	0.00	0.00	6,342.81	2,371.74	-97.18	2,373.73	0.00	0.00	0.00
7,000.00	0.00	0.00	6,442.81	2,371.74	-97.18	2,373.73	0.00	0.00	0.00
7,100.00	0.00	0.00	6,542.81	2,371.74	-97.18	2,373.73	0.00	0.00	0.00
7,139.19	0.00	0.00	6,582.00	2,371.74	-97.18	2,373.73	0.00	0.00	0.00
Top Gas									
7,200.00	0.00	0.00	6,642.81	2,371.74	-97.18	2,373.73	0.00	0.00	0.00
7,300.00	0.00	0.00	6,742.81	2,371.74	-97.18	2,373.73	0.00	0.00	0.00
7,400.00	0.00	0.00	6,842.81	2,371.74	-97.18	2,373.73	0.00	0.00	0.00
7,500.00	0.00	0.00	6,942.81	2,371.74	-97.18	2,373.73	0.00	0.00	0.00
7,600.00	0.00	0.00	7,042.81	2,371.74	-97.18	2,373.73	0.00	0.00	0.00
7,700.00	0.00	0.00	7,142.81	2,371.74	-97.18	2,373.73	0.00	0.00	0.00
7,800.00	0.00	0.00	7,242.81	2,371.74	-97.18	2,373.73	0.00	0.00	0.00
7,900.00	0.00	0.00	7,342.81	2,371.74	-97.18	2,373.73	0.00	0.00	0.00
8,000.00	0.00	0.00	7,442.81	2,371.74	-97.18	2,373.73	0.00	0.00	0.00
8,100.00	0.00	0.00	7,542.81	2,371.74	-97.18	2,373.73	0.00	0.00	0.00

Database:	Grand Junction District	Local Co-ordinate Reference:	Well Chevron TR 43-27-597 - Slot A11
Company:	Terra Energy Partners	TVD Reference:	GL 8465' & RKB 24' @ 8489.00usft (H&P 318)
Project:	Garfield County, CO NAD83	MD Reference:	GL 8465' & RKB 24' @ 8489.00usft (H&P 318)
Site:	TR 44-24-597 Pad	North Reference:	True
Well:	Chevron TR 43-27-597	Survey Calculation Method:	Minimum Curvature
Wellbore:	OH		
Design:	Plan #1 16Aug2016 jcsdi		

Planned Survey										
Measured Depth (usft)	Inclination (°)	Azimuth (°)	Vertical Depth (usft)	+N/-S (usft)	+E/-W (usft)	Vertical Section (usft)	Dogleg Rate (°/100usft)	Build Rate (°/100usft)	Turn Rate (°/100usft)	
8,200.00	0.00	0.00	7,642.81	2,371.74	-97.18	2,373.73	0.00	0.00	0.00	
8,300.00	0.00	0.00	7,742.81	2,371.74	-97.18	2,373.73	0.00	0.00	0.00	
8,400.00	0.00	0.00	7,842.81	2,371.74	-97.18	2,373.73	0.00	0.00	0.00	
8,500.00	0.00	0.00	7,942.81	2,371.74	-97.18	2,373.73	0.00	0.00	0.00	
8,600.00	0.00	0.00	8,042.81	2,371.74	-97.18	2,373.73	0.00	0.00	0.00	
8,700.00	0.00	0.00	8,142.81	2,371.74	-97.18	2,373.73	0.00	0.00	0.00	
8,800.00	0.00	0.00	8,242.81	2,371.74	-97.18	2,373.73	0.00	0.00	0.00	
8,900.00	0.00	0.00	8,342.81	2,371.74	-97.18	2,373.73	0.00	0.00	0.00	
9,000.00	0.00	0.00	8,442.81	2,371.74	-97.18	2,373.73	0.00	0.00	0.00	
9,100.00	0.00	0.00	8,542.81	2,371.74	-97.18	2,373.73	0.00	0.00	0.00	
9,200.00	0.00	0.00	8,642.81	2,371.74	-97.18	2,373.73	0.00	0.00	0.00	
9,208.19	0.00	0.00	8,651.00	2,371.74	-97.18	2,373.73	0.00	0.00	0.00	
Cameo Coals										
9,300.00	0.00	0.00	8,742.81	2,371.74	-97.18	2,373.73	0.00	0.00	0.00	
9,400.00	0.00	0.00	8,842.81	2,371.74	-97.18	2,373.73	0.00	0.00	0.00	
9,485.19	0.00	0.00	8,928.00	2,371.74	-97.18	2,373.73	0.00	0.00	0.00	
Rollins SS										
9,500.00	0.00	0.00	8,942.81	2,371.74	-97.18	2,373.73	0.00	0.00	0.00	
9,600.00	0.00	0.00	9,042.81	2,371.74	-97.18	2,373.73	0.00	0.00	0.00	
9,677.19	0.00	0.00	9,120.00	2,371.74	-97.18	2,373.73	0.00	0.00	0.00	
Cozzette										
9,700.00	0.00	0.00	9,142.81	2,371.74	-97.18	2,373.73	0.00	0.00	0.00	
9,800.00	0.00	0.00	9,242.81	2,371.74	-97.18	2,373.73	0.00	0.00	0.00	
9,900.00	0.00	0.00	9,342.81	2,371.74	-97.18	2,373.73	0.00	0.00	0.00	
9,926.19	0.00	0.00	9,369.00	2,371.74	-97.18	2,373.73	0.00	0.00	0.00	
Corcoran										
10,000.00	0.00	0.00	9,442.81	2,371.74	-97.18	2,373.73	0.00	0.00	0.00	
10,000.19	0.00	0.00	9,443.00	2,371.74	-97.18	2,373.73	0.00	0.00	0.00	
Sego										
10,100.00	0.00	0.00	9,542.81	2,371.74	-97.18	2,373.73	0.00	0.00	0.00	
10,200.00	0.00	0.00	9,642.81	2,371.74	-97.18	2,373.73	0.00	0.00	0.00	
10,300.00	0.00	0.00	9,742.81	2,371.74	-97.18	2,373.73	0.00	0.00	0.00	
10,300.19	0.00	0.00	9,743.00	2,371.74	-97.18	2,373.73	0.00	0.00	0.00	
TR 43-27-597 PBHL										

Design Targets									
Target Name	Dip Angle (°)	Dip Dir. (°)	TVD (usft)	+N/-S (usft)	+E/-W (usft)	Northing (usft)	Easting (usft)	Latitude	Longitude
- hit/miss target									
- Shape									
TR 43-27-597 MVRD	0.00	0.00	6,024.00	2,371.74	-97.18	1,649,584.10	2,223,344.70	39.5845547	-108.2560301
- plan hits target center									
- Circle (radius 25.00)									
TR 43-27-597 PBHL	0.00	0.00	9,743.00	2,371.74	-97.18	1,649,584.10	2,223,344.70	39.5845547	-108.2560301
- plan hits target center									
- Point									

Database:	Grand Junction District	Local Co-ordinate Reference:	Well Chevron TR 43-27-597 - Slot A11
Company:	Terra Energy Partners	TVD Reference:	GL 8465' & RKB 24' @ 8489.00usft (H&P 318)
Project:	Garfield County, CO NAD83	MD Reference:	GL 8465' & RKB 24' @ 8489.00usft (H&P 318)
Site:	TR 44-24-597 Pad	North Reference:	True
Well:	Chevron TR 43-27-597	Survey Calculation Method:	Minimum Curvature
Wellbore:	OH		
Design:	Plan #1 16Aug2016 jcsdi		

Casing Points					
Measured Depth (usft)	Vertical Depth (usft)	Name	Casing Diameter (in)	Hole Diameter (in)	
3,043.00	2,808.88	9 5/8" Surface Casing	9.62	13.50	

Formations					
Measured Depth (usft)	Vertical Depth (usft)	Name	Lithology	Dip (°)	Dip Direction (°)
2,793.87	2,591.00	Wasatch		0.00	0.00
4,782.30	4,330.00	Top "G" Sand		0.00	0.00
4,868.06	4,405.00	Base "G" Sand		0.00	0.00
5,030.42	4,547.00	Fort Union		0.00	0.00
6,475.16	5,918.00	Ohio Creek		0.00	0.00
6,581.19	6,024.00	Mesaverde		0.00	0.00
7,139.19	6,582.00	Top Gas		0.00	0.00
9,208.19	8,651.00	Cameo Coals		0.00	0.00
9,485.19	8,928.00	Rollins SS		0.00	0.00
9,677.19	9,120.00	Cozzette		0.00	0.00
9,926.19	9,369.00	Corcoran		0.00	0.00
10,000.19	9,443.00	Sego		0.00	0.00