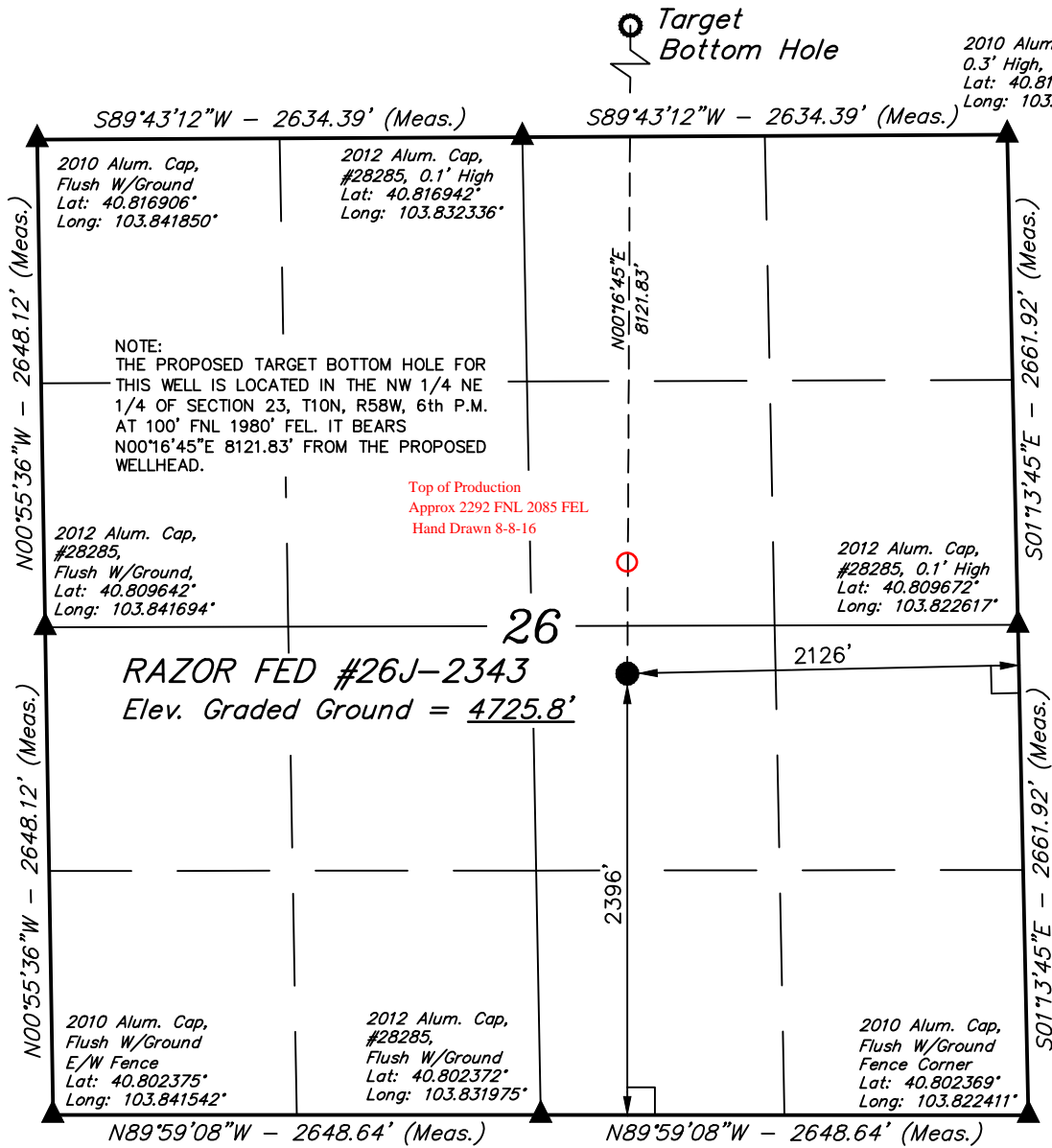


LEGEND:

- └─ = 90° SYMBOL
- = PROPOSED WELLHEAD.
- = TARGET BOTTOM HOLE.
- ▲ = SECTION CORNERS LOCATED.

T10N, R58W, 6th P.M.



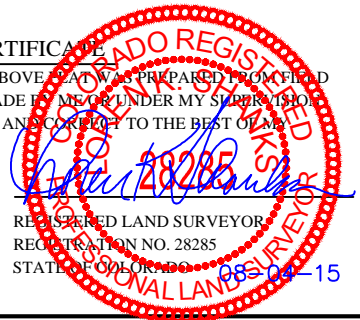
PDOP = 1.4

NAD 83 (SURFACE LOCATION)	
LATITUDE = 40°48'32.21" (40.808947)	
LONGITUDE = 103°49'48.99" (103.830275)	
NAD 27 (SURFACE LOCATION)	
LATITUDE = 40°48'32.26" (40.808961)	
LONGITUDE = 103°49'47.18" (103.829772)	



CERTIFICATE

THIS IS TO CERTIFY THAT THE ABOVE PLAT WAS PREPARED FROM FIELD NOTES OF ACTUAL SURVEYS MADE BY ME OR UNDER MY SUPERVISION AND THAT THE SAME ARE TRUE AND CORRECT TO THE BEST OF MY KNOWLEDGE AND BELIEF.



BASIS OF BEARINGS
BASIS OF BEARINGS IS A G.P.S. OBSERVATION

BASIS OF ELEVATION
SPOT ELEVATION LOCATED AT THE NORTHEAST CORNER OF SECTION 15, T9N, R58W, 6th P.M. TAKEN FROM THE GATEHOOK SPRING, QUADRANGLE, COLORADO, WELD COUNTY, 7.5 MINUTE QUAD (TOPOGRAPHIC MAP) PUBLISHED BY THE UNITED STATES DEPARTMENT OF THE INTERIOR, GEOLOGICAL SURVEY. SAID ELEVATION IS MARKED AS BEING 4679 FEET.

WHITING OIL & GAS CORP.

RAZOR FED #26J-2343 (SURFACE LOCATION)
NW 1/4 SE 1/4, SECTION 26, T10N, R58W, 6th P.M.
WELD COUNTY, COLORADO

SURVEYED BY: DALLAS NIELSEN, B.C.	DATE: 06-15-15
DRAWN BY: K.B.	DATE DRAWN: 07-07-15
SCALE: 1" = 1000'	REVISED: 07-28-15 S.F.



UELS, LLC
Corporate Office * 85 South 200 East
Vernal, UT 84078 * (435) 789-1017



WELL LOCATION PLAT

T10N, R58W, 6th P.M.

LEGEND:

- └─ = 90° SYMBOL
- = PROPOSED WELLHEAD.
- = TARGET BOTTOM HOLE.
- ▲ = SECTION CORNERS LOCATED.

2012 Alum. Cap,
0.5' Below Ground
Lat: 40.831497°
Long: 103.842233°

2012 Alum. Cap,
0.5' High
Lat: 40.831497°
Long: 103.832603°

Stone
Lat: 40.831547°
Long: 103.822978°

N01°08'46"W - 2659.31' (Meas.)

S89°59'11"E - 2666.23' (Meas.)

N89°35'31"E
2663.79' (Meas.)

RAZOR FED #26J-2343
Target Bottom Hole

1980'

S00°29'14"E - 2655.18' (Meas.)

NOTE:
THE PROPOSED TARGET BOTTOM HOLE
BEARS N00°16'45"E 8121.83' FROM THE
PROPOSED WELLHEAD WHICH IS LOCATED IN
THE NW 1/4 SE 1/4 OF SECTION 26, T10N,
R58W, 6th P.M. AT 2396' FSL 2126' FEL.

2012 Alum. Cap,
0.2' High
Lat: 40.824203°
Long: 103.842042°

N00°16'45"E
8121.83'

23

2012 Alum. Cap,
0.4' High
Lat: 40.824261°
Long: 103.822900°

N01°08'46"W - 2659.31' (Meas.)

S89°43'12"W - 2634.39' (Meas.)

S89°43'12"W - 2634.39' (Meas.)

S00°29'14"E - 2655.18' (Meas.)

2010 Alum. Cap,
Flush W/Ground
Lat: 40.816906°
Long: 103.841850°

2012 Alum. Cap,
0.1' High
Lat: 40.816942°
Long: 103.832336°

2010 Alum. Cap,
0.3' High, Fence Corner
Lat: 40.816975°
Long: 103.822819°

Surface Location ●

CERTIFICATE

THIS IS TO CERTIFY THAT THE ABOVE PLAT WAS PREPARED FROM FIELD NOTES OF ACTUAL SURVEYS MADE BY ME OR UNDER MY SUPERVISION AND THAT THE SAME ARE TRUE AND CORRECT TO THE BEST OF MY KNOWLEDGE AND BELIEF.



NAD 83 (TARGET BOTTOM HOLE)
LATITUDE = 40°49'52.45" (40.831236)
LONGITUDE = 103°49'48.46" (103.830128)
NAD 27 (TARGET BOTTOM HOLE)
LATITUDE = 40°49'52.50" (40.831250)
LONGITUDE = 103°49'46.66" (103.829628)



BASIS OF BEARINGS
BASIS OF BEARINGS IS A G.P.S. OBSERVATION

BASIS OF ELEVATION

SPOT ELEVATION LOCATED AT THE NORTHEAST CORNER OF SECTION 15, T9N, R58W, 6th P.M. TAKEN FROM THE GATEHOOK SPRING, QUADRANGLE, COLORADO, WELD COUNTY, 7.5 MINUTE QUAD (TOPOGRAPHIC MAP) PUBLISHED BY THE UNITED STATES DEPARTMENT OF THE INTERIOR, GEOLOGICAL SURVEY. SAID ELEVATION IS MARKED AS BEING 4679 FEET.

WHITING OIL & GAS CORP.

RAZOR FED #26J-2343 (TARGET BOTTOM HOLE)
NW 1/4 NE 1/4, SECTION 23, T10N, R58W, 6th P.M.
WELD COUNTY, COLORADO

SURVEYED BY: DALLAS NIELSEN, B.C.	DATE: 06-15-15
DRAWN BY: K.B.	DATE DRAWN: 07-07-15
SCALE: 1" = 1000'	REVISED: 07-28-15 S.F.
WELL LOCATION PLAT	



UELS, LLC
Corporate Office * 85 South 200 East
Vernal, UT 84078 * (435) 789-1017

