



Service Order #: 85034c

Date: 09-Aug-16

Well Name	Location	County	St	API#
VALLEJO 32-19	SEC 19 - T33S - R67	LAS ANIMAS	CO	05-071-09338-0000

Formation	Cement Via	Type Of Service	Well Type	Age	AFE#	PO#
	TUBING	P. AND A.	GAS	REWORK		

Customer: BASIC ENERGY SERVICES

Remarks: SAFETY MEETING/PRESSURE TEST @ 1500
WELL OPEN @ 0
15SX/3BBL TD 660' - TC 556' TAGGED
10SX/2BBL TD 556' - TC 470'
55SX/12BBL TD 385' - TC 124' TAGGED
15SX/3BBL TD 124' - TC 0'
CEMENT CIRCULATED TO SURFACE

Customer Rep: BASIC

PH:

WELLBORE DATA				
Type	Size	Weight	Depth	Volume
Surface Casing:				
Production Casing:	5.500			
Intermediate:				
Drill Pipe:				
Tubing:	2.875			

Type	Size	Depth (Top)	Depth (Bot)	Volume
Liner:				
Open Hole:				

OTHER DATA		
BHT	Max PSI	Total Depth

Packer or RetainerType / Depth:

Perf Depths:	#	Total
	0	0
	0	
	0	

TIME	PUMP RATES		DENSITY	PRESS	STG TOT	TOTAL	REMARKS
	WATER (gpm)	PUMP (bpm)	(lb/gal)	(psi)	(bbls)	(bbls)	
12:57	0	0.0	8.45	17	0.0	0.0	SAFETY MEETING
12:57	0	0.0	8.46	17	0.0	0.0	PRESSURE TEST @ 1500
12:58	0	0.0	8.41	0	0.1	0.1	OPEN WELL @ 0
12:58	0	0.6	8.38	0	0.0	0.1	START WATER
13:16	0	0.1	8.27	0	34.9	35.0	END WATER NO RETURNS
13:54	0	0.0	15.82	6	0.0	35.1	START CMT
13:56	0	2.5	15.63	0	3.2	38.4	END CMT
13:56	0	2.5	15.67	0	0.0	38.5	START WATER
13:57	0	3.0	15.66	0	3.3	41.7	END WATER
14:07	0	0.0	9.24	0	3.6	42.1	CHART FAILED TO START
9:00	0	0.0	8.68	0	11.4	36.3	PUMP 20BBL WATER
9:00	0	0.0	8.68	0	11.4	36.3	PUMP 2BBL CMT
9:00	0	0.0	8.68	0	11.4	36.3	PUMP 2.7BBL WATER
9:01	0	0.0	8.68	0	11.4	36.3	PUMP 1BBL WATER
9:01	0	0.0	8.68	0	11.4	36.3	Paused 09:01:33-10:03:31
10:11	0	0.6	10.26	6	0.0	36.4	START WATER
10:19	1	0.0	10.29	0	6.4	42.7	END WATER
10:19	0	0.1	10.30	0	6.4	42.7	RETURNS AT SURFACE
10:39	38	0.6	10.33	0	0.0	0.0	START WATER
10:43	0	1.0	15.35	6	3.8	3.8	END WATER
10:43	0	1.0	15.38	6	0.0	3.9	START CMT
10:47	48	2.1	15.64	11	5.9	9.7	START CALCIUM CHLORIDE
10:48	0	2.1	15.68	0	9.0	12.8	END CALCIUM CHLORIDE
10:50	0	2.0	15.55	22	11.9	15.7	END CMT

Customer Acknowledgement:

Service Rating:

- ☐ Satisfactory
☐ Unsatisfactory

Cementer:

JEREMIE TETER

PRODUCTS USED

15.8# 1.15 YIELD CLASS G
4.99GAL/SX
FLUID PROVIDED BY CUSTOMER
CALCIUM CHLORIDE 50#



Service Order #: 85034c

Date: 09-Aug-16

11:14	0	0.0	10.15	0	27.2	31.0	Paused 11:14:38-14:40:24
14:45	0	0.0	9.86	0	0.0	31.0	ANNOTATION
14:54	0	0.6	15.84	0	0.0	0.0	START CMT
14:56	0	2.1	15.82	4	3.3	3.3	END CMT
15:17	0	0.0	8.51	0	22.0	22.0	Paused 15:17:08

Summary

Max Fl. Rate	Avg Fl. Rate	Max Psi	Avg Psi
3.0	0.7	1,408	6

Customer Acknowledgement:

Service Rating:

- ☐ Satisfactory
☐ Unsatisfactory

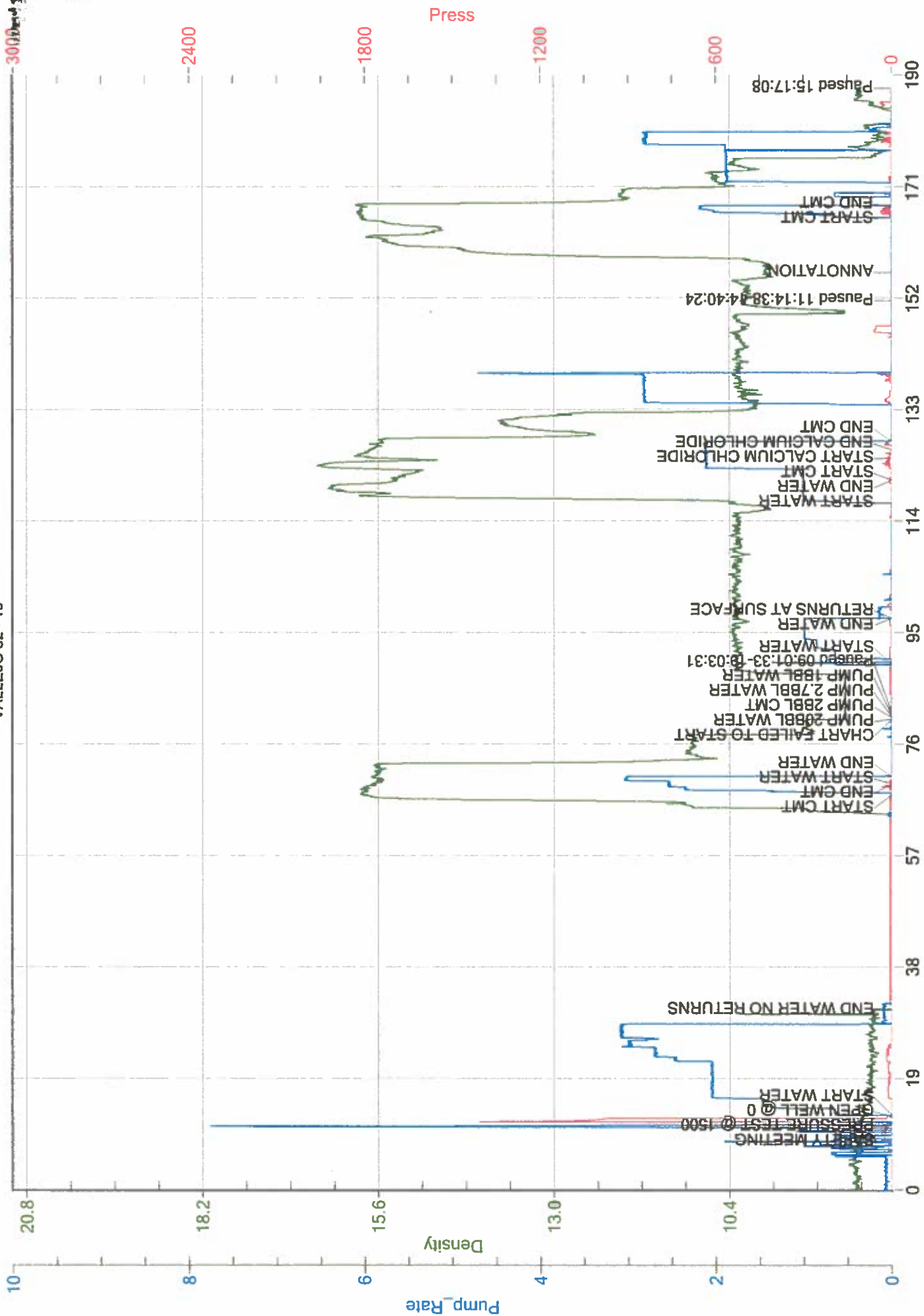
Cementer:

JEREMIE TETER

PRODUCTS USED

15.8# 1.15 YIELD CLASS G
4.99GAL/SX
FLUID PROVIDED BY CUSTOMER
CALCIUM CHLORIDE 50#

BASIC ENERGY SERVICES
VALLEJO 32 - 19



Job Started On: 08/09/2016 @ 12:45:54 PM