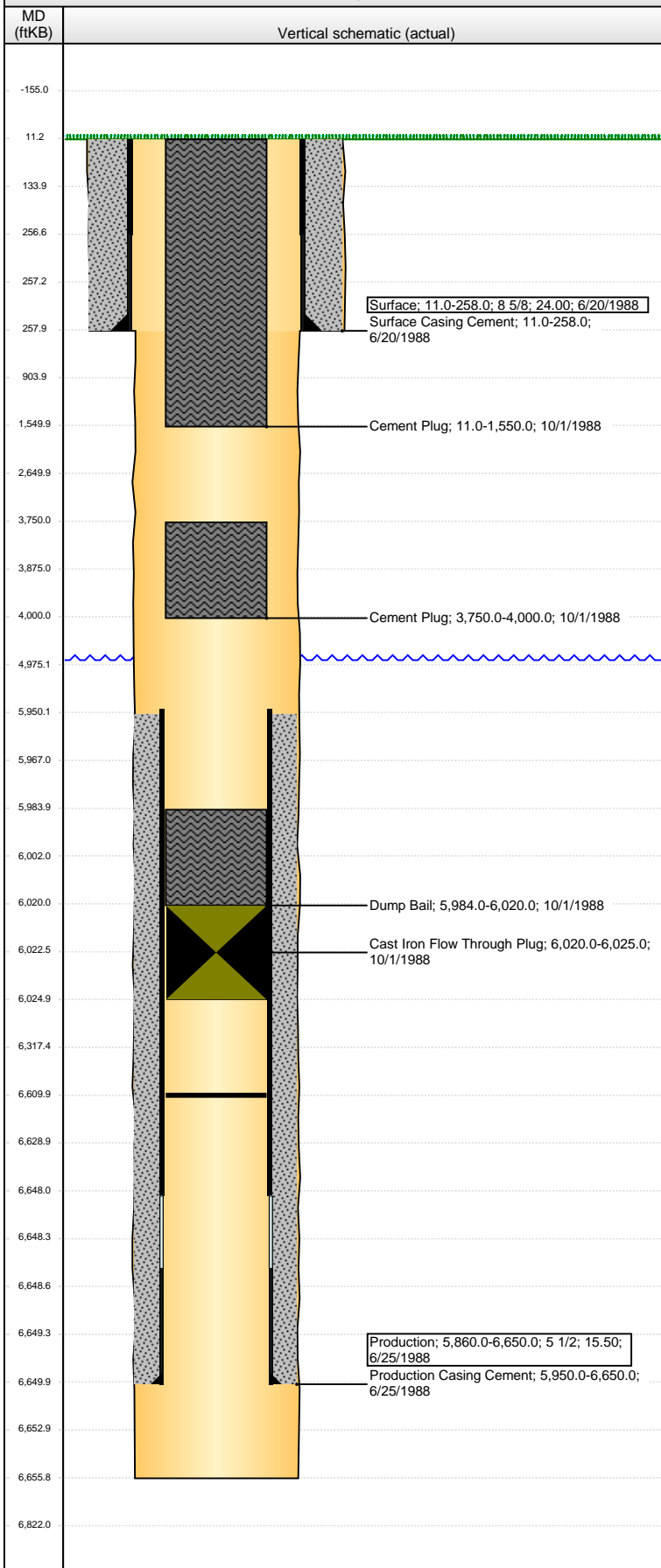


**Well Name: PRINCE 3-29**

VERTICAL - ORIGINAL HOLE, 9/14/2016 10:23:07 AM



## Well Header

API	Business Unit	District	Well Config
05-123-13945	DJ BASIN	15	VERTICAL
Original KB Elevation (ft)	KB - GL / MSL (ftKB)	Spud Date	P & A Date
4,851	11.00	6/20/1988	10/1/1988

Comment  
CSG PULLED DEPTH IS ESTIMATED. USED TOP OF PRODUCTION CEMENT

Directions To Well

## Congressional Location

Quarter 3	Quarter 4	Section	Township	Twtnshp N/S Dir	Range	Range E/W Dir
		29	9	N	58	W

## Bottom Hole Location

North-South Distance (ft)	From N or S Line	East-West Distance (ft)	From E or W Line

## Plug Back Total Depths

Date	Depth (ftKB)	Method	Com
6/29/1988	6,610.0	CASED HOLE LOG	DEPTH LOGGER ON CBL

## Wellbore Sections

Section Des	Size (in)	Act Top, MD (ftKB)	Act Btm, MD (ftKB)
SURFACE	12 1/4	11	258
PRODUCTION	7 7/8	258	6,656

## Zone Statuses

Zone Name	Status Date	Status	Fluid Type	Job	Prod Method

## Casing Strings

### Surface, 258.0ftKB

Casing Description	Run Date	OD (in)	Wt/Len (l...)	Grade	Top, MD (ft...)	MD (ftKB)
Surface	6/20/1988	8 5/8	24.00		11.0	258.0

### Production, 6,650.0ftKB

Casing Description	Run Date	OD (in)	Wt/Len (l...)	Grade	Top, MD (ft...)	MD (ftKB)
Production	6/25/1988	5 1/2	15.50		11.0	6,650.0

## Cement

Description	Top Depth (ftKB)	Bottom Depth (ftKB)
Surface Casing Cement	11.0	258.0
Production Casing Cement	5,950.0	6,650.0
Dump Bail	5,984.0	6,020.0
Cement Plug	3,750.0	4,000.0
Cement Plug	11.0	1,550.0

## Tubing Strings

Tubing Description	Run Date	String...	ID (in)	Wt (lb/ft)	Grade	Len (ft)	Set De...

## Perforation Data

Zone	Bnch/St g	Entered Shot Total	Top (ftKB)	Btm (ftKB)	Date

## Other In Hole

Run Date	Des	OD (in)	Top (ftKB)	Btm (ftKB)
10/1/1988	Cast Iron Flow Through Plug	4.9	6,020.0	6,025.0

## Logs

Date	Type	Top, MD (ftKB)	Btm, MD (ftKB)
6/29/1988	CEMENT BOND	5,827.0	6,604.0