

HALLIBURTON

iCem[®] Service

WPX ENERGY ROCKY MOUNTAIN LLC-EBUS

For: Lynn Cass

Date: Friday, June 03, 2016

FEDERAL GM 542-8 Surface

Sincerely,

Grand Junction Cement

2.0 Real-Time Job Summary

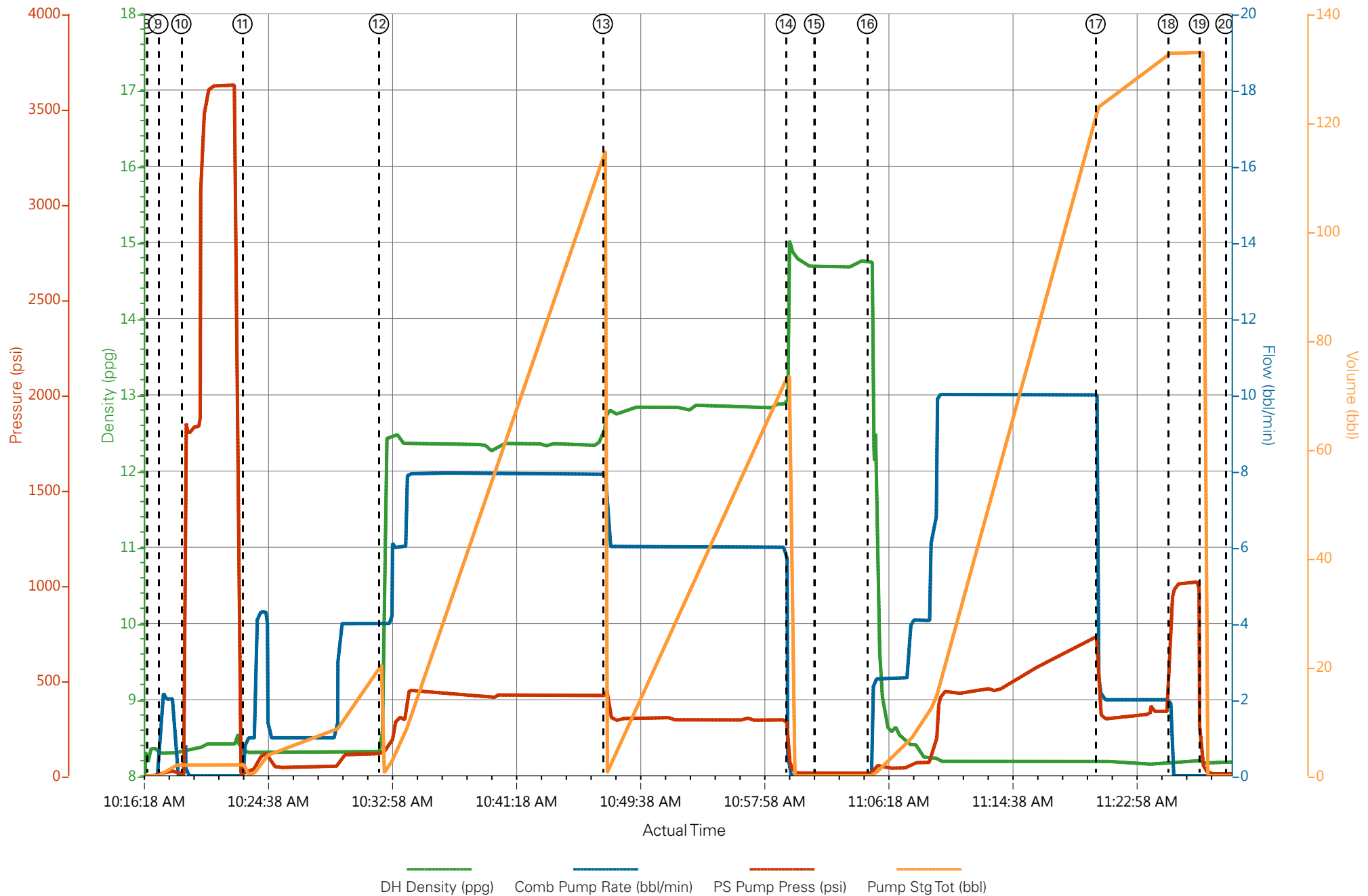
2.1 Job Event Log

Type	Seq. No.	Graph Label	Date	Time	Source	DH Density (ppg)	Comb Pump Rate (bbl/min)	PS Pump Press (psi)	Pump Stg Tot (bbl)	Comments
Event	1	Call Out	6/3/2016	00:00:00	USER					ELITE #4
Event	2	Pre-Convoy Safety Meeting	6/3/2016	01:30:00	USER					ALL HES EMPLOYEES
Event	3	Arrive At Loc	6/3/2016	03:00:00	USER					ARRIVED ON LOCATION 3 HOURS EARLY DIDNT START CHARGING TIME UNTIL REQUESTED ON LOCATION TIME RIG RUNNING WIPER TRIP UPON HES ARRIVAL
Event	4	Assessment Of Location Safety Meeting	6/3/2016	05:00:00	USER					ALL HES EMPLOYEES / COMPANY REP OFFERED SDS WATER TEST: TEMP: 65 PH: 7 CHLORIDES:0
Event	5	Pre-Rig Up Safety Meeting	6/3/2016	05:30:00	USER					ALL HES EMPLOYEES
Event	6	Rig-Up Equipment	6/3/2016	06:00:00	USER					1 HT-400 PUMP TRUCK (ELITE #4) 2- 660 BULK TRUCK 1 BODY LOAD BULK TRUCK 1 F-550 PICKUP
Event	7	Pre-Job Safety Meeting	6/3/2016	10:00:00	USER					ALL HES EMPLOYEES AND RIG CREW
Event	8	Start Job	6/3/2016	10:16:41	COM5					TD: 1670 TP: 1660 SJ: 46.58 CSG: 9 5/8 32.3# H-40 OH: 13 1/2 18" CONDUCTOR @ 63' MUD WT: 9.5 PPG 40 VIS
Event	9	Prime Lines	6/3/2016	10:17:28	COM5	8.33	2.0	32	2.0	PRIME LINES WITH 2 BBLS FRESH WATER

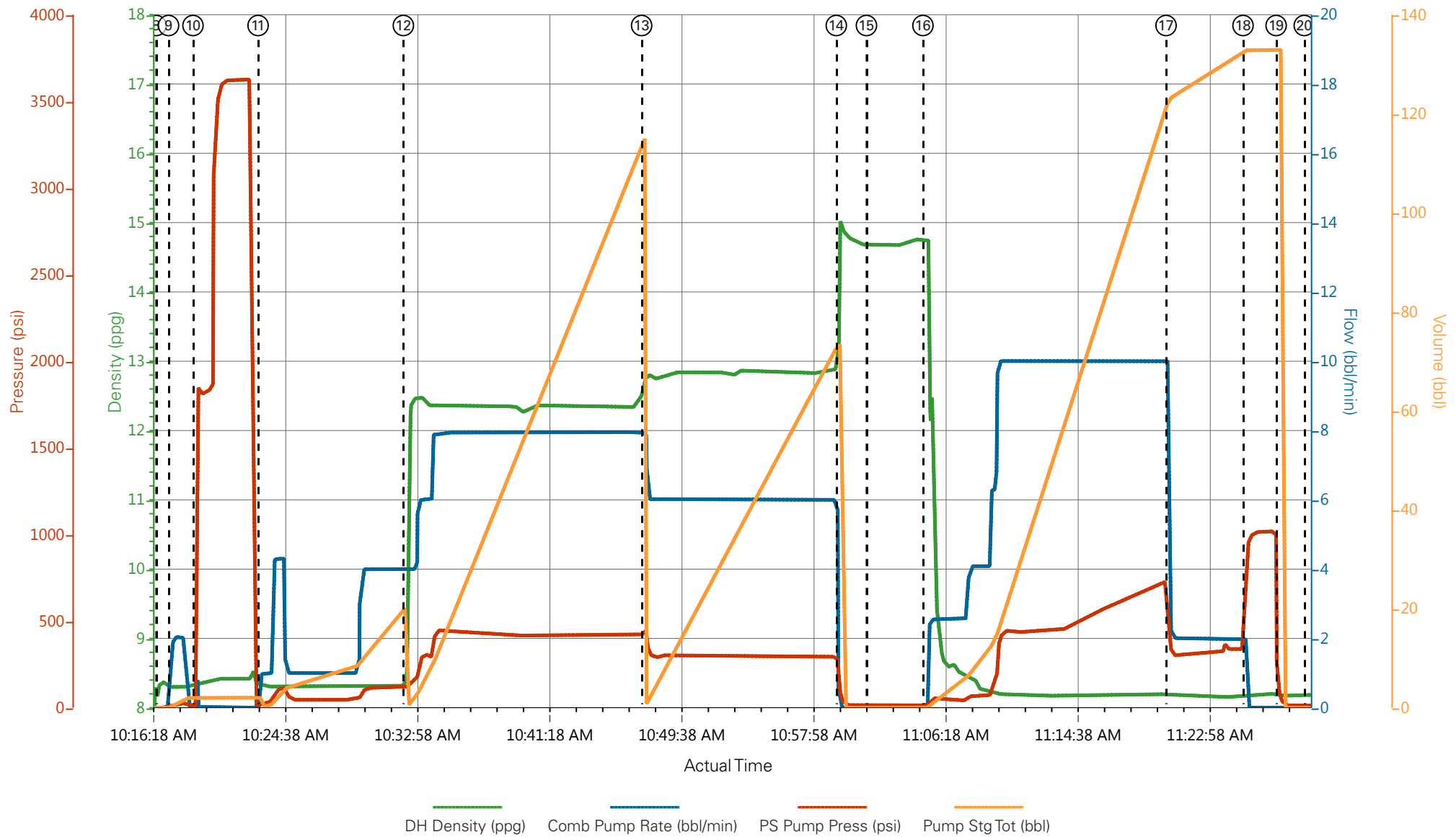
Event	10	Test Lines	6/3/2016	10:19:00	COM5	8.33	0.0	3625	2.0	PRESSURE TEST OK
Event	11	Pump Fresh Water Spacer	6/3/2016	10:23:07	COM5	8.33	4.0	117	20	20 BBL FRESH WATER SPACER
Event	12	Pump Lead Cement	6/3/2016	10:32:17	COM5	12.3	8.0	430	110.2	260 SKS 12.3 PPG 2.38 YIELD 13.77 GAL/SK LEAD CEMENT WEIGHT VERIFIED VIA PRESSURIZED MUD SCALES
Event	13	Pump Tail Cement	6/3/2016	10:47:19	COM5	12.8	6.0	300	65.8	175 SKS 12.8 PPG 2.11 YIELD 11.78 GAL/SK TAIL CEMENT WEIGHT VERIFIED VIA PRESSURIZED MUD SCALES
Event	14	Shut Down	6/3/2016	10:59:36	COM5					SHUT DOWN TO DROP TOP PLUG
Event	15	Drop Top Plug	6/3/2016	11:01:30	COM5					PLUG AWAY NO PROBLEMS WASHED UP ON TOP OF THE PLUG AS PER COMPANY REP
Event	16	Pump Displacement	6/3/2016	11:05:04	COM5	8.33	10.0	725	127.6	FRESH WATER DISPLACEMENT
Event	17	Slow Rate	6/3/2016	11:20:24	COM5	8.33	2.0	370	117	SLOW RATE TO BUMP PLUG
Event	18	Bump Plug	6/3/2016	11:25:16	USER	8.33	2.0	1010	127.6	PSI BEFORE BUMPING PLUG 370 BUMPED PLUG UP TO 1010 PSI
Event	19	Check Floats	6/3/2016	11:27:21	USER					FLOATS HELD 1/2 BBL BACK TO DISPLACEMENT TANKS
Event	20	End Job	6/3/2016	11:29:08	COM5					GOOD RETURNS THROUGHOUT JOB PIPE STATIC THROUGHOUT JOB NO CEMENT RETURNED TO SURFACE
Event	21	Comment	6/3/2016	11:30:00	USER					WAIT FOR TOPOUT CEMENT TO ARRIVE ON LOCATION
Event	22	Start Job	6/3/2016	16:32:00	COM5					TOP OUT TRUCK ARRIVED

ON LOCATION # 1500										
Event	23	Prime Pumps	6/3/2016	16:33:00	COM5	8.33	0.0	40	2.0	PRIME LINES WITH FRESH WATER
Event	24	Pump Cement	6/3/2016	16:34:43	COM5	15.8	2.0	50	14.5	70 SKS 15 .8 PPG 1.15 YIELD 5.0 GAL/SK CEMENT WEIGHT VERIFIED VIA PRESSURIZED MUD SCALES HAD TO PUMP CEMENT ON PRE-MIX BOOST DUE TO PUMP NOT CATCHING PRIME
Event	25	End Job	6/3/2016	16:58:00	COM5					CEMENT RETURNED TO SURFACE AND SHUTDOWN 3 ADDITIONAL HOURS ADDED TO THE TICKET
Event	26	Pre-Rig Down Safety Meeting	6/3/2016	17:10:00	USER					ALL HES EMPLOYEES
Event	27	Rig-Down Equipment	6/3/2016	17:15:00	USER					
Event	28	Pre-Convoy Safety Meeting	6/3/2016	18:45:00	USER					ALL HES EMPLOYEES
Event	29	Crew Leave Location	6/3/2016	19:00:00	USER					THANK YOU FOR USING HALLIBURTON CEMENT DUSTIN SMITH AND CREW

WPX - FEDERAL GM 542-8 - 9 5/8 SURFACE



WPX - FEDERAL GM 542-8 - 9 5/8 SURFACE



- | | | | | |
|---|-----------------------------|---------------------------|---------------------|----------------|
| ① Call Out | ⑤ Pre-Rig Up Safety Meeting | ⑨ Prime Lines | ⑬ Pump Tail Cement | ⑰ Slow Rate |
| ② Pre-Convoy Safety Meeting | ⑥ Rig-Up Equipment | ⑩ Test Lines | ⑭ Shut Down | ⑱ Bump Plug |
| ③ Arrive At Loc | ⑦ Pre-Job Safety Meeting | ⑪ Pump Fresh Water Spacer | ⑮ Drop Top Plug | ⑲ Check Floats |
| ④ Assessment Of Location Safety Meeting | ⑧ Start Job | ⑫ Pump Lead Cement | ⑯ Pump Displacement | ⑳ End Job |

▼ **HALLIBURTON** | iCem® Service

Created: 2016-06-03 10:10:53, Version: 4.2.393

Edit

Customer: WPX ENERGY ROCKY MOUNTAIN LLC-EBUS

Job Date: 6/3/2016 10:11:54 AM

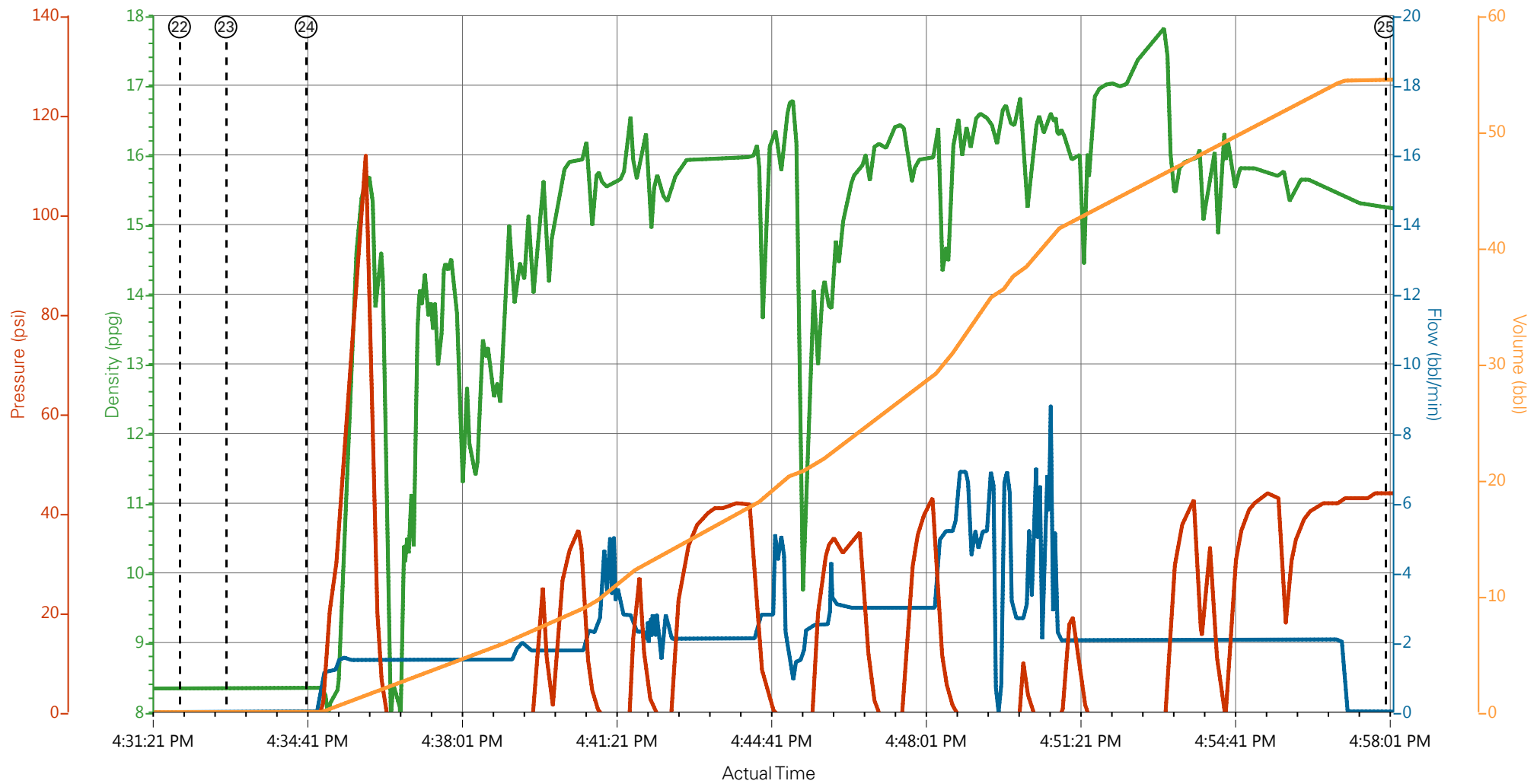
Well: FEDERAL GM 542-8

Representative: BEAUDE OAKS

Sales Order #: 903348411

ELITE #4: DUSTIN SMITH / DAVID CAMPBELL

WPX - FEDERAL GM 542-8 - TOP OUT



— DH Density (ppg)
 — Comb Pump Rate (bbl/min)
 — PS Pump Press (psi)
 — Pump Stg Tot (bbl)

- | | | | | | |
|---|--------------------------|---------------------------|---------------------|----------------|--------------------------------|
| ① Call Out | ⑥ Rig-Up Equipment | ⑪ Pump Fresh Water Spacer | ⑯ Pump Displacement | 21 Comment | 26 Pre-Rig Down Safety Meeting |
| ② Pre-Convoy Safety Meeting | ⑦ Pre-Job Safety Meeting | ⑫ Pump Lead Cement | ⑰ Slow Rate | 22 Start Job | 27 Rig-Down Equipment |
| ③ Arrive At Loc | ⑧ Start Job | ⑬ Pump Tail Cement | ⑱ Bump Plug | 23 Prime Pumps | 28 Pre-Convoy Safety Meeting |
| ④ Assessment Of Location Safety Meeting | ⑨ Prime Lines | ⑭ Shut Down | ⑲ Check Floats | 24 Pump Cement | 29 Crew Leave Location |
| ⑤ Pre-Rig Up Safety Meeting | ⑩ Test Lines | ⑮ Drop Top Plug | 20 End Job | 25 End Job | |

▼ **HALLIBURTON** | iCem® Service

Created: 2016-06-03 10:10:53, Version: 4.2.393

Edit

Customer: WPX ENERGY ROCKY MOUNTAIN LLC-EBUS

Job Date: 6/3/2016 10:11:54 AM

Well: FEDERAL GM 542-8

Representative: BEAUDE OAKS

Sales Order #: 0903348411

ELITE #4: DUSTIN SMITH / DAVID CAMPBELL