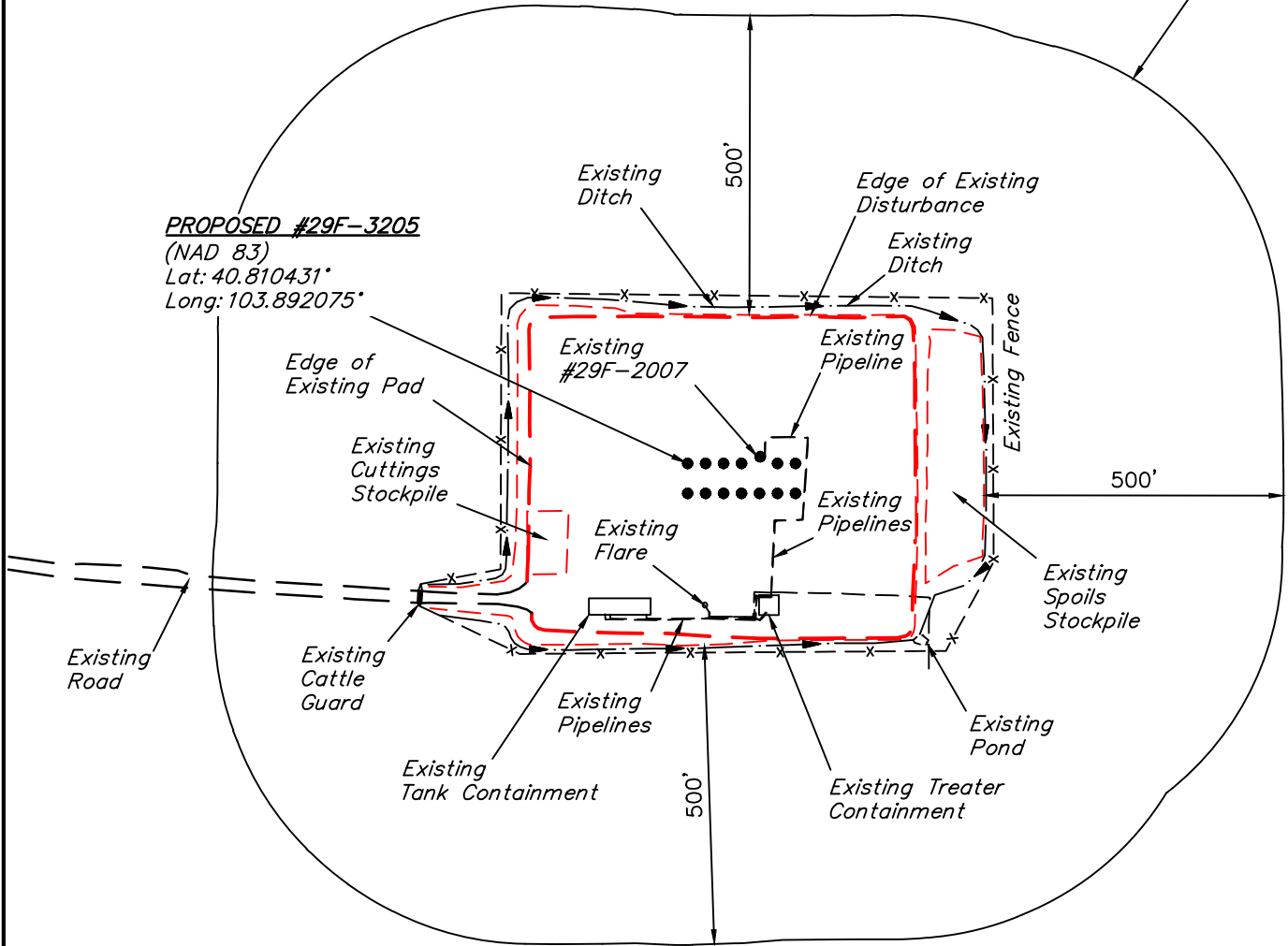


500' Offset from Edge of Disturbance



**NOTES:**

- There are no existing improvements within 500' of the proposed disturbance.

**WHITING OIL & GAS CORP.**

**RAZOR #29F-2005, 2038, 2006, 2039, 3207, 2040, 2008, 3205, 3238, 3206, 3239, 3240 & 3208  
ON EXISTING RAZOR 29F-2007 WELL PAD  
SE 1/4 NW 1/4, SECTION 29, T10N, R58W, 6th P.M.  
WELD COUNTY, COLORADO**

SURVEYED BY: DALLAS NIELSEN, C.M.	SURVEY DATE: 10-15-15
DRAWN BY: C.C.	DATE DRAWN: 10-28-15
SCALE: 1" = 300'	REVISED: 00-00-00

**LOCATION DRAWING**



**UELS, LLC**  
Corporate Office \* 85 South 200 East  
Vernal, UT 84078 \* (435) 789-1017