

HALLIBURTON

iCem[®] Service

WPX ENERGY ROCKY MOUNTAIN LLC-EBUS

For: Mark Mewshaw

GM 442-8 Surface

API# 05-045-22533-00

Job Date: Monday, June 13, 2016

Sincerely,

Grand Junction Cement Engineering

1.0 Real-Time Job Summary

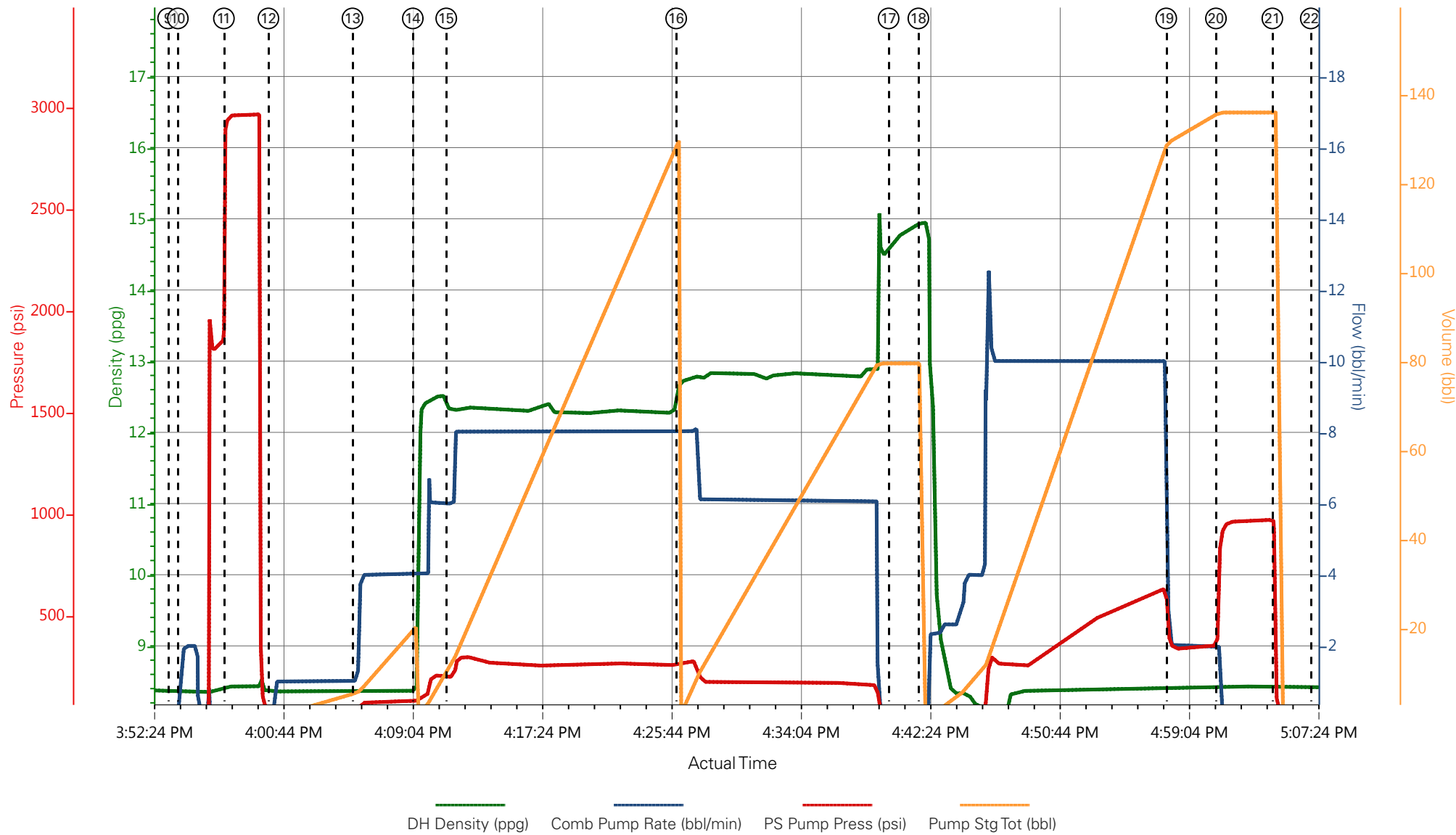
1.1 Job Event Log

Type	Seq. No.	Graph Label	Date	Time	Source	DH Density (ppg)	Comb Pump Rate (bbl/min)	PS Pump Press (psi)	Pump Stg Tot (bbl)	Comments
Event	1	Call Out	6/13/2016	05:00:00	USER					REQUESTED ON LOCATION AT 1100
Event	2	Pre-Convoy Safety Meeting	6/13/2016	06:00:00	USER					ALL HES PRESENT
Event	3	Crew Leave Yard	6/13/2016	06:15:00	USER					1- 660 BULK TRUCK 1- BODY LOAD, 1- ELITE PUMP, AND 1 -550 PU. ALL TRUCKS LEFT THE YRD TOGETHER
Event	4	Arrive At Loc	6/13/2016	08:00:00	USER					ARRIVED 3 HOUR EARLY. RIG CREW RUNNING WIPER TRIP. THEY WERE AT ABOUT 1000' GOING IN THE HOLE
Event	5	Assessment Of Location Safety Meeting	6/13/2016	08:15:00	USER					MET WITH CO REP AND WENT OVER JOB PROCEDURE AND NUMBERS. DID A WALKAROUND OF LOCATION AND GOT WATER SAMPLE (PH7, CHL0, 67F) THERE WAS TOO MUCH STUFF IN THE WAY TO SAFELY SPOT TRUCKS UNTIL CASING CRW WAS GONE.
Event	6	Pre-Rig Up Safety Meeting	6/13/2016	14:00:00	USER					ALL HES PRESENT
Event	7	Rig-Up Equipment	6/13/2016	14:15:00	USER					CASING CREW WAS FINISHED @ 1400 AND WE SPOTTID IN AND GOT RIGGED UP

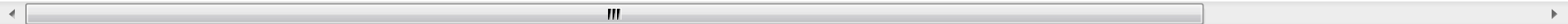
Event	8	Pre-Job Safety Meeting	6/13/2016	15:45:00	USER					MET WITH RIG CREW TO GO OVER JOB. ALL HES PRESENT
Event	9	Start Job	6/13/2016	15:53:30	COM5					TD1713', TP 1708', SJ 1656', CASING 9.625" 32.3# H-40, MW 9.4PPG, OH 13.5" HOT 770', TOT 938', HOL 938'
Event	10	Prime Pumps	6/13/2016	15:54:08	COM5	8.34	2	40	2	2 BBLS FRESH WATER
Event	11	Test Lines	6/13/2016	15:57:06	COM5	8.34		2978		TESTED TO 2978 HELD. KO'S FUNCTIONING
Event	12	Pump Spacer 1	6/13/2016	15:59:58	COM5	8.34	4	90	20	20 BBLS FRESH WATER
Event	13	Check weight	6/13/2016	16:05:23	COM5	12.3				12.3 PPG VERIFIED BY PRESSURIZED MUD SCALES
Event	14	Pump Lead Cement	6/13/2016	16:09:16	COM5	12.3	8	310	123	290 SKS (123 BBLS) 12.3 PPG, 2.38 FT3/SK, 13.77 GAL/SK
Event	15	Check Weight	6/13/2016	16:11:25	USER	12.3				12.3 PPG VERIFIED BY PRESSURIZED MUD SCALES BROUGHT DOWNHOLE DOWN TO MATCH
Event	16	Pump Tail Cement	6/13/2016	16:26:14	COM5	12.7	6	190	71	191 SKS (71 BBLS) 12.8 PPG, 2.11 FT3/SK, 11.78 GAL/SK
Event	17	Drop Top Plug	6/13/2016	16:39:55	COM5					PLUG WENT (BEAUDE)
Event	18	Pump Displacement	6/13/2016	16:41:50	COM5	8.34	10	650	130.3	130.3 BBLS FRESH WATER
Event	19	Slow Rate	6/13/2016	16:57:48	COM5	8.34	2	370	120	2 BBLS/MIN TO LAND PLUG
Event	20	Bump Plug	6/13/2016	17:01:00	COM5	8.34	2	370	130.3	LANDED AT 370 PSI AND WENT UP TO 980 PSI
Event	21	Check Floats	6/13/2016	17:04:38	COM5	8.34		980	130.3	FLOATS HELD .5 BBLS BACK
Event	22	End Job	6/13/2016	17:07:07	COM5					45 BBLS OF GOOD CEMENT TO SURFACE
Event	23	Pre-Rig Down Safety Meeting	6/13/2016	17:15:00	USER					ALL HES PRESENT

Event	24	Rig Down Lines	6/13/2016	17:30:00	USER	
Event	25	Pre-Convoy Safety Meeting	6/13/2016	18:00:00	USER	ALL HES PRESENT
Event	26	Crew Leave Location	6/13/2016	18:15:00	USER	THANK YOU FOR USING HALLIBURTON CEMENT. CLIFF SPARKS AND CREW

WPX FEDERAL GM 442-8 9.625" SURFACE



- | | | | | | | | |
|-----------------------------|---|--------------------------|-----------------|--------------------|---------------------|-----------------|-----------|
| ① Call Out | ④ Arrive At Loc | ⑦ Rig-Up Equipment | ⑩ Prime Pumps | ⑬ Check weight | ⑯ Pump Tail Cement | ⑲ Slow Rate | 22 End J |
| ② Pre-Convoy Safety Meeting | ⑤ Assessment Of Location Safety Meeting | ⑧ Pre-Job Safety Meeting | ⑪ Test Lines | ⑭ Pump Lead Cement | ⑰ Drop Top Plug | 20 Bump Plug | 23 Pre-Ri |
| ③ Crew Leave Yard | ⑥ Pre-Rig Up Safety Meeting | ⑨ Start Job | ⑫ Pump Spacer 1 | ⑮ Check Weight | ⑱ Pump Displacement | 21 Check Floats | 24 Rig Do |



▼ **HALLIBURTON** | iCem® Service

Created: 2016-06-13 09:38:02, Version: 4.2.393

Edit

Customer: WPX ENERGY ROCKY MOUNTAIN LLC-EBUS

Job Date: 6/13/2016 3:29:03 PM

Well: 442-8

Representative: BEAUDE OAKS

Sales Order #: 903363093

ELITE - 4: CLIFF SPARKS - DAVID CAMPBELL

WPX FEDERAL GM 442-8 9.625" SURFACE

