

Database File: grynberg_schulte_1_13r.db
Dataset Pathname: pass5.2
Presentation Format: rbl55
Dataset Creation: Fri Sep 16 03:52:04 2016 by Calc 7.0 B1
Charted by: Depth in Feet scaled 1:240

343	TT (usec)	243
0	GR (GAPI)	150
0	LTEN (lb)	4000

CCL

0	Amplitude (mV)	100
	Amplified Amplitude	
0	(mV)	10

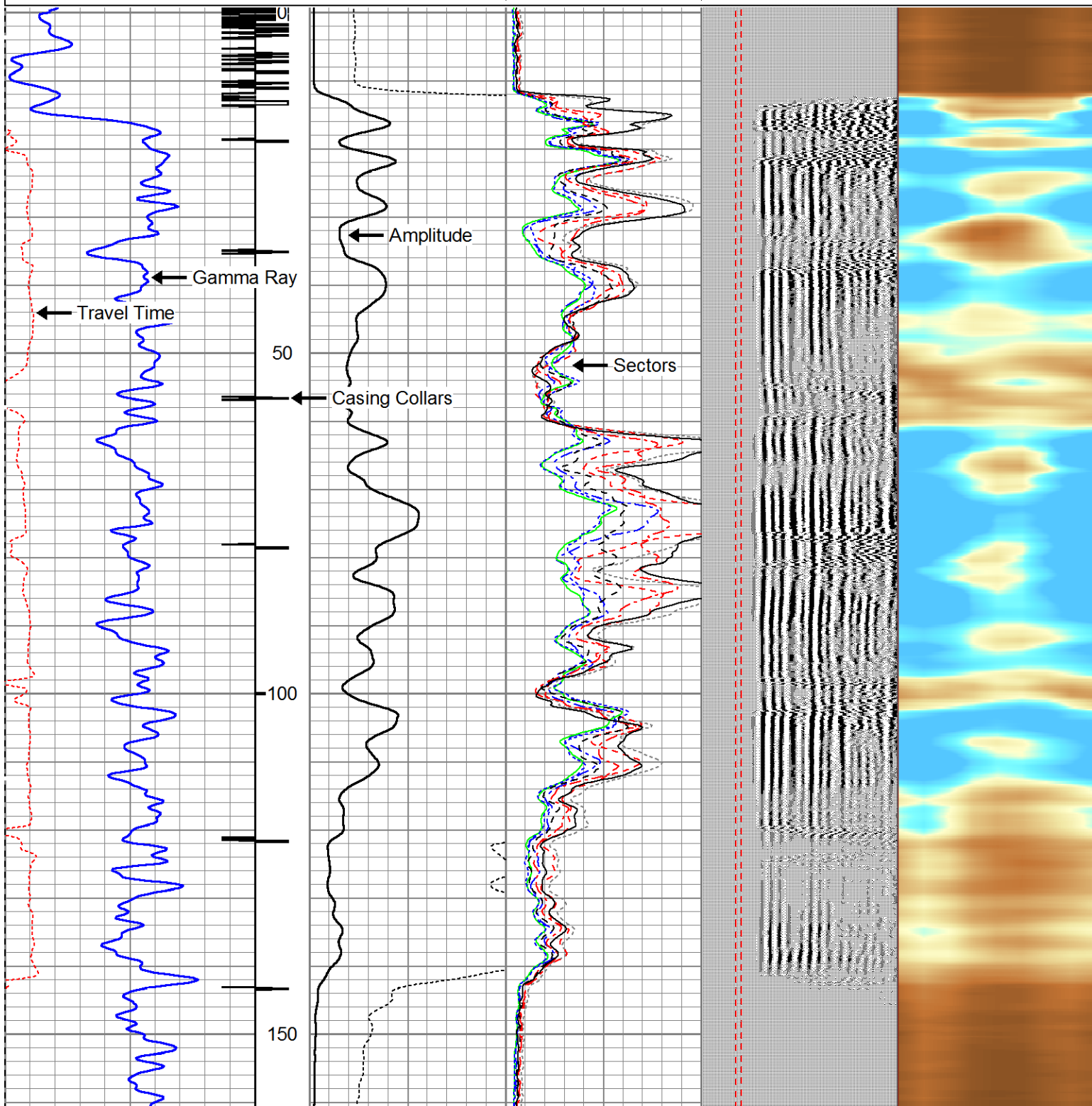
-5	AMPS2	150
-5	AMPS3	150
-5	AMPS4	150
-5	AMPS5	150
-5	AMPS6	150
-5	AMPS7	150
-5	AMPS8	150
-5	AMPS1	150

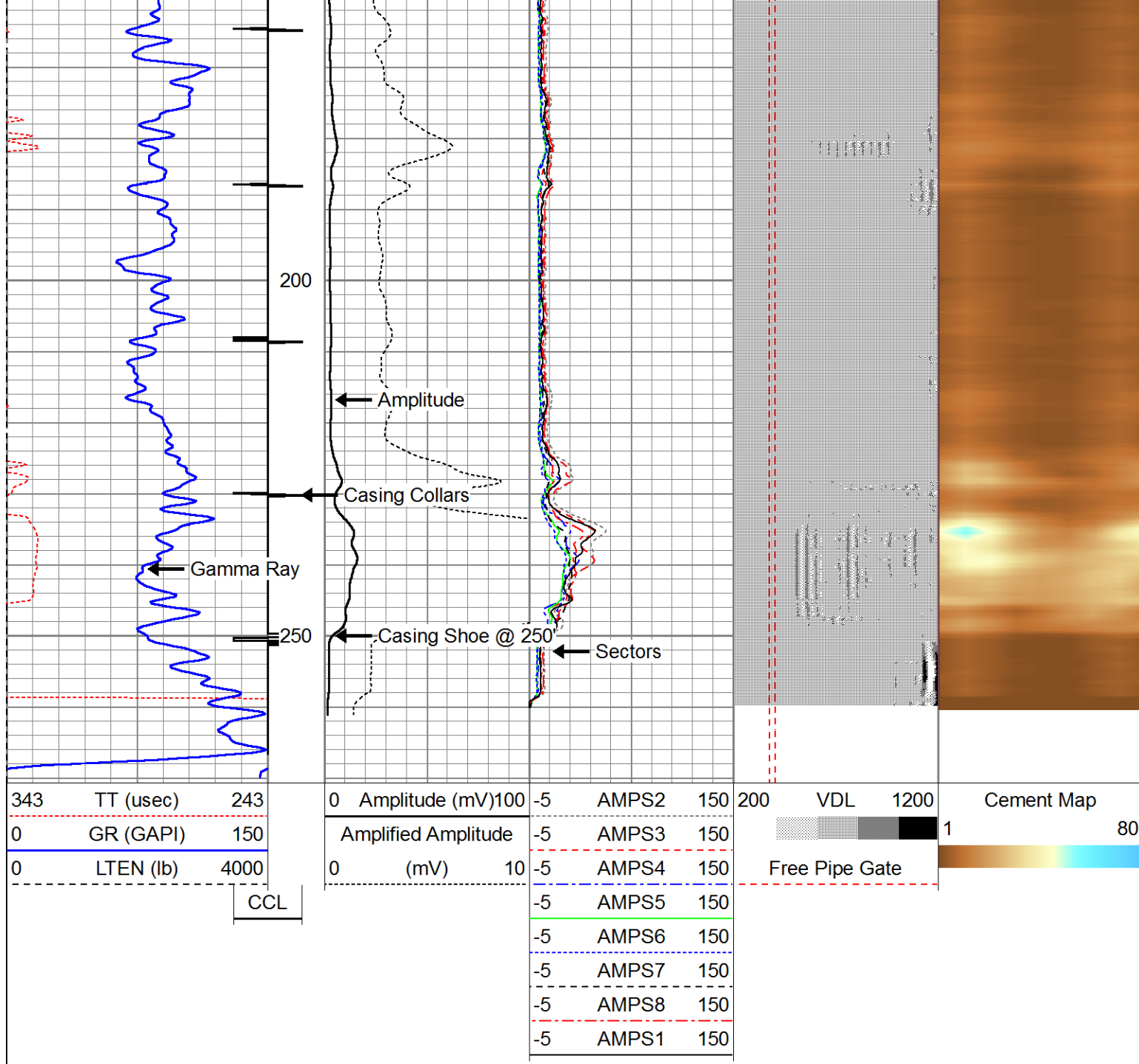
200	VDL	1200
-----	-----	------

Free Pipe Gate

Cement Map

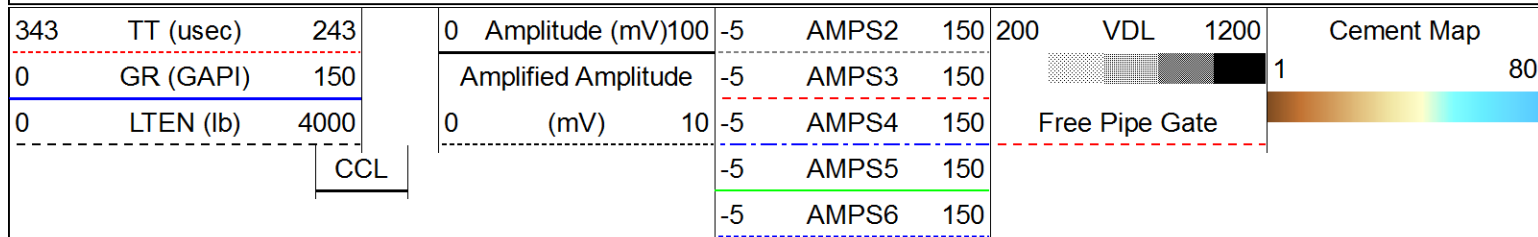
1 80

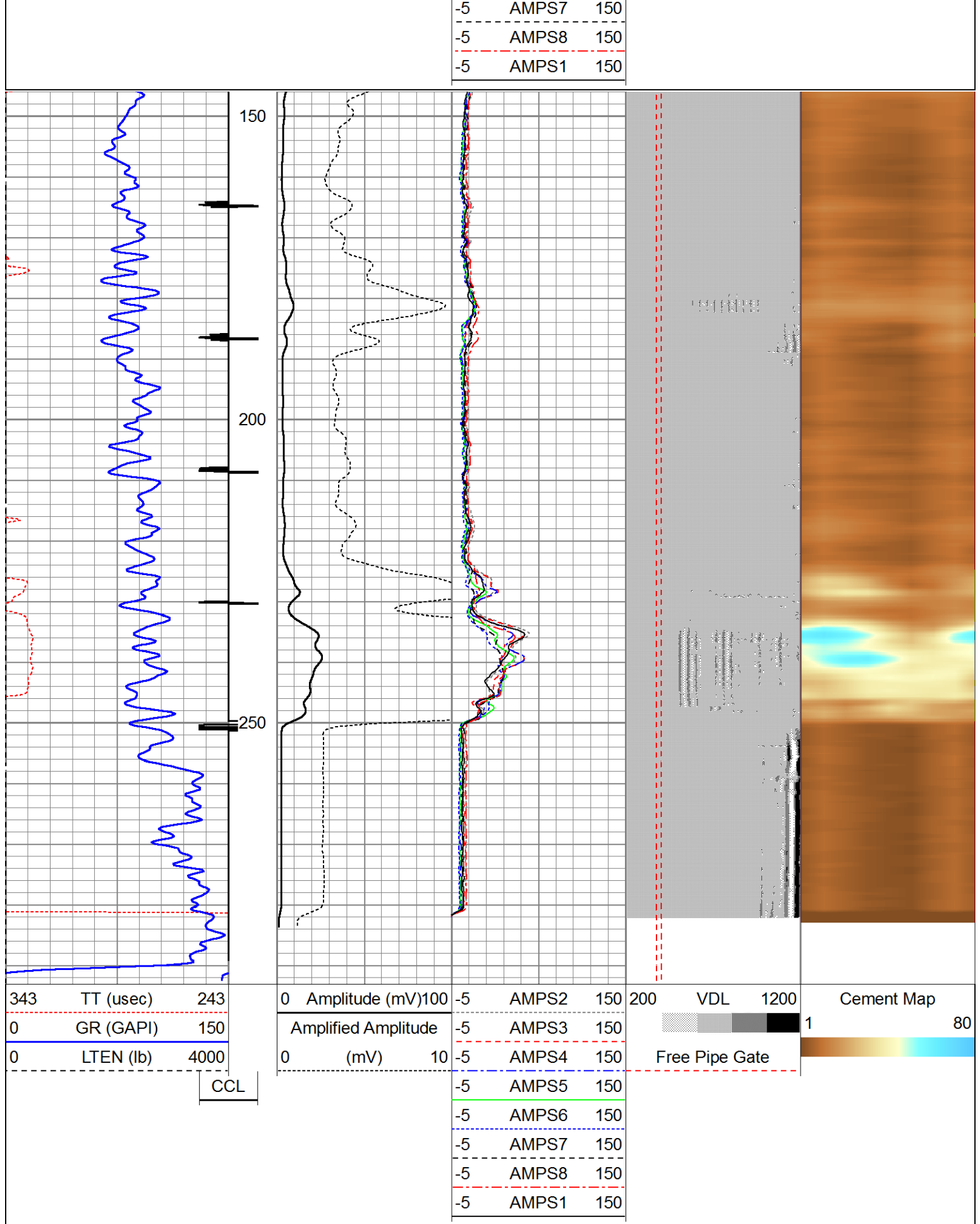




Repeat Pass 5" = 100'

Database File: grynberg_schulte_1_13r.db
 Dataset Pathname: pass3
 Presentation Format: rbl55
 Dataset Creation: Fri Sep 16 03:31:50 2016 by Log 7.0 B1
 Charted by: Depth in Feet scaled 1:240





Log Variables

Database: C:\Warrior\Data\grynberg_schulte_1_13r.db
Dataset: field/well/run1/pass5.2

Top - Bottom

XXXX 0	PPT usec 0	CASEWGHT lb/ft 24	MAXAMPL mV 52	MINAMPL mV 1	MINATTN db/ft 0.8	SRFTEMP degF 0	CASEOD in 8.625
PERFS 0	TDEPTH ft 0	BOTTEMP degF 100	BOREID in 10.75				

Calibration Report

Database File: grynberg_schulte_1_13r.db

Dataset Pathname: pass5.2

Dataset Creation: Fri Sep 16 03:52:04 2016 by Calc 7.0 B1

Gamma Ray Calibration Report

Serial Number: PRO071130
Tool Model: Probe275dig
Performed: Sat Aug 15 10:29:17 2015

Calibrator Value: 185.1 GAPI

Background Reading: 4.8 cps
Calibrator Reading: 200.0 cps

Sensitivity: 0.9483 GAPI/cps

Segmented Cement Bond Log Calibration Report

Serial Number: FW1403-64
Tool Model: RBT-TEMP

Calibration Casing Diameter: 8.625 in
Calibration Depth: 75.500 ft

Master Calibration, performed Fri Sep 16 03:42:12 2016:

	Raw (v)		Calibrated (mv)		Results	
	Zero	Cal	Zero	Cal	Gain	Offset
3'	0.019	1.793	2.000	54.795	24.765	1.436
CAL	0.017	0.894				
5'	0.021	1.478	2.000	54.795	36.249	1.234
SUM						
S1	0.017	0.328	0.000	100.000	321.142	-5.359
S2	0.017	0.316	0.000	100.000	335.037	-5.742
S3	0.019	0.390	0.000	100.000	270.078	-5.226
S4	0.020	0.560	0.000	100.000	185.113	-3.634
S5	0.019	0.650	0.000	100.000	158.529	-2.988
S6	0.017	0.582	0.000	100.000	177.101	-3.048
S7	0.017	0.480	0.000	100.000	216.051	-3.763
S8	0.017	0.391	0.000	100.000	267.555	-4.680

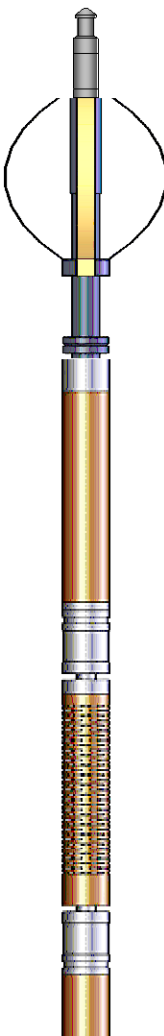

Internal Reference Calibration, performed Wed Dec 31 17:00:00 1969:

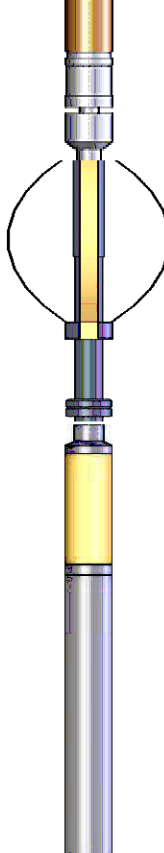
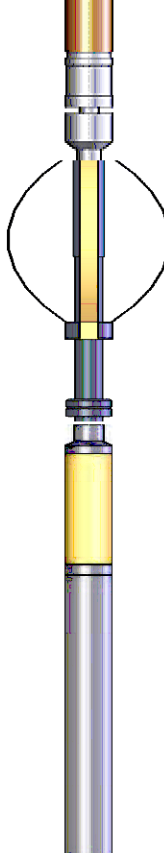
	Raw (v)		Calibrated (v)		Results	
	Zero	Cal	Zero	Cal	Gain	Offset
CAL	0.000	0.000	0.017	0.894	1.000	0.000


Air Zero Calibration, performed Fri Sep 16 03:26:47 2016:

	Raw (v)	Calibrated (v)	Results
	Zero	Zero	Offset
3'	0.000	0.000	0.000
5'	0.000	0.000	0.000
SUM			
S1	0.000	0.000	0.000
S2	0.000	0.000	0.000
S3	0.000	0.000	0.000
S4	0.000	0.000	0.000
S5	0.000	0.000	0.000
S6	0.000	0.000	0.000
S7	0.000	0.000	0.000
S8	0.000	0.000	0.000

Temperature Calibration Report					
Serial Number:	FW1403-64				
Tool Model:	RBT-TEMP				
Performed:	Sun Jun 13 13:33:21 1993				
	Reference		Reading		
Low Reference:	0.00 degF		0.00 degF		
High Reference:	1.00 degF		1.00 degF		
Gain:	1.00				
Offset:	0.00				
Delta Spacing	5				

Sensor	Offset (ft)	Schematic	Description	Len (ft)	OD (in)	Wt (lb)
			1.4375CHD Titan Cable Head 1 7/16	1.00	1.44	10.00
			Probe Probe 2 3/4 Centralizer	2.88	2.75	20.00
TEMP	13.99					
			RBT-RBT-TEMP (FW1403-64) Probe 2.75" Radii Bond w/Temp Tool	9.21	2.75	90.00
WVFS3FT	11.84					
WVFCAL	11.84					
WVFS1	11.84					
WVFS2	11.84					
WVFS3	11.84					
WVFS4	11.84					

WVFS5	11.84		Probe Probe 2 3/4 Centralizer	2.88	2.75	20.00
WVFS6	11.84					
WVFS7	11.84					
WVFS8	11.84					
WVF5FT	10.84					
CCL	3.88		GR-Probe275dig (PRO071130) Probe Digital Gamma CCL	4.78	2.75	57.00
DCCL	3.88					
GR	2.54					
Dataset: grynberg_schulte_1_13r.db: field/well/run1/pass5.2						
Total Length: 20.74 ft						
Total Weight: 197.00 lb						
O.D. 2.75 in						

	Company	Grynberg Petroleum
	Well	Schulte #1-13R
	Field	Granite Wash
	County	Lincoln
	State	Colorado