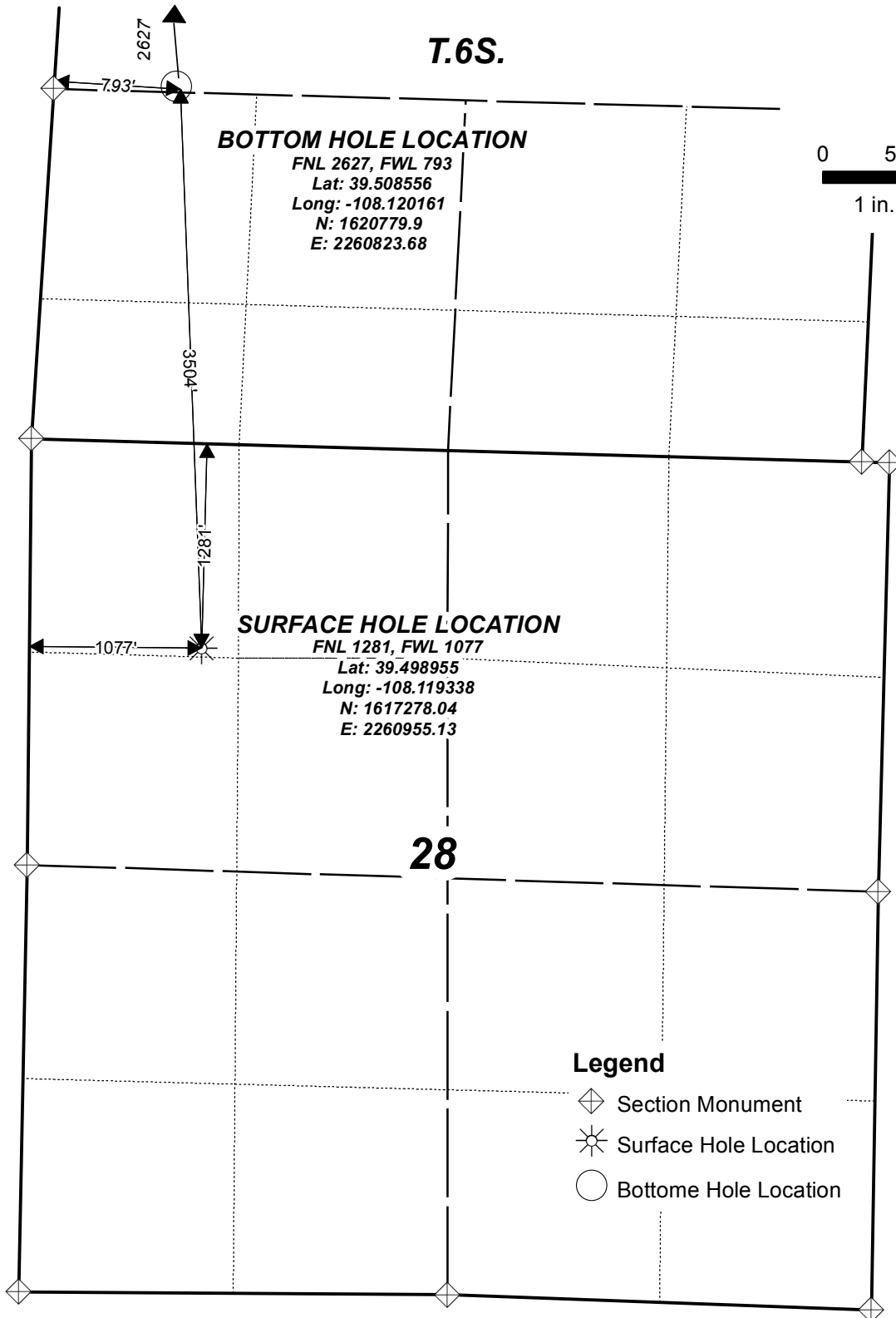


Puckett GM 13-21



T.6S.



BOTTOM HOLE LOCATION

FNL 2627, FWL 793
Lat: 39.508556
Long: -108.120161
N: 1620779.9
E: 2260823.68

SURFACE HOLE LOCATION

FNL 1281, FWL 1077
Lat: 39.498955
Long: -108.119338
N: 1617278.04
E: 2260955.13

0 500 1,000 Feet
1 in. = 1,000 ft.

Legend

- ◆ Section Monument
- ☼ Surface Hole Location
- Bottom Hole Location

28

R.96W



Map Date: 9/15/2016

Scale: 1" = 1,000'

Page 1 of 1

Well Location Plat

TEP Rocky Mountain LLC

NW1/4 NW1/4, SECTION 28,
T.6S., R.96W, of the 6th. P.M.
GARFIELD COUNTY, COLORADO