

HALLIBURTON

iCem[®] Service

WPX ENERGY ROCKY MOUNTAIN LLC-EBUS

For: Mark Mewshaw

Date: Friday, June 03, 2016

GM 43-8 Production

Job Date: Thursday, June 02, 2016

Sincerely,

Evan Russell

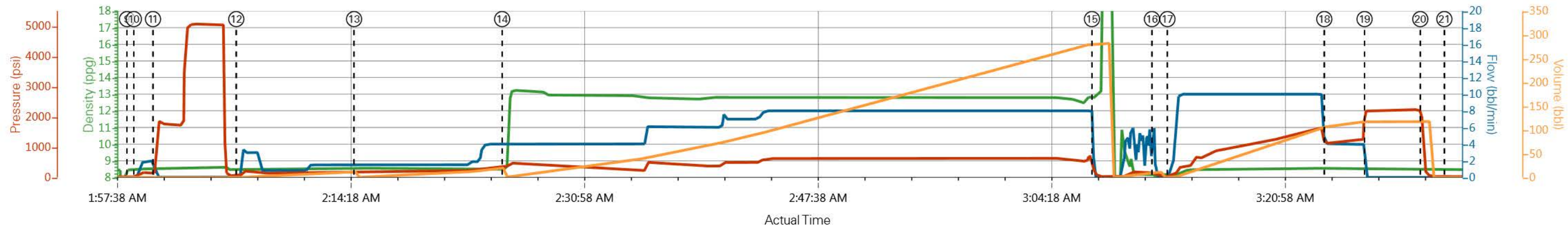
1.0 Real-Time Job Summary

1.1 Job Event Log

Type	Seq. No.	Activity	Date	Time	Source	DH Density (ppg)	Comb Pump Rate (bbl/min)	PS Pump Press (psi)	Pump Stg Tot (bbl)	Comments
Event	1	Call Out	6/1/2016	07:45:00	USER					Requested on Location @ 12:30
Event	2	Pre-Convoy Safety Meeting	6/1/2016	10:00:00	USER					
Event	3	Crew Leave Yard	6/1/2016	10:05:00	USER					1 Elite, 1 660, 1 pickup
Event	4	Arrive At Loc	6/1/2016	11:30:00	USER					Rig still running casing
Event	5	Assessment Of Location Safety Meeting	6/1/2016	11:45:00	USER					JSA completed - Customer offered/received SDS - water test pH 7.0, Cl <200, temp 68 degrees
Event	6	Pre-Rig Up Safety Meeting	6/1/2016	14:30:00	USER					
Event	7	Rig-Up Equipment	6/1/2016	14:45:00	USER					1 hardline to standpipe, manifold on ground, hardline to pit, water hoses to upright and day tank, bulk hoses to silo and 660.
Event	8	Pre-Job Safety Meeting	6/2/2016	01:30:00	USER					All HES personnel, rig crew, and company rep
Event	9	Start Job	6/2/2016	01:58:30	USER					TD 7247', TP 7240.5', SJ 29', OH 8.75", Csg 4.5" 11.6 lb/ft P-110, Mud 10.0 ppg.
Event	10	Prime Pumps	6/2/2016	01:58:59	USER	8.4	2	220	2	Fresh water
Event	11	Test Lines	6/2/2016	02:00:21	COM6	8.4	.5	5072	.5	Press held at 5072 psi
Event	12	Pump Spacer 1	6/2/2016	02:06:17	COM6	8.4	1.5	245	10	Fresh water

Event	13	Pump Spacer 2	6/2/2016	02:14:42	COM6	8.50	1.5	260	20	Mud Flush III
Event	14	Pump Cement	6/2/2016	02:25:16	COM6	12.7	8	670	268.1	805 Sks 12.7 ppg 1.87 yield 8.74 gal/sk
Event	15	Shutdown	6/2/2016	03:07:21	USER					Wash lines to pit
Event	16	Drop Top Plug	6/2/2016	03:11:38	COM6					Verify Plug Launched
Event	17	Pump Displacement	6/2/2016	03:12:44	COM6	8.45	10	1670	111.8	3 lbs BE-6, 1 gal MMCR, 2% KCl
Event	18	Other	6/2/2016	03:23:56	COM6	8.45	4.00	1270	102	Slow Rate 10 bbls prior to Calculated Displacement
Event	19	Bump Plug	6/2/2016	03:26:48	USER	8.50	4	2170	111.8	Plug Bumped at psi, Brought up to psi
Event	20	Check Floats	6/2/2016	03:30:47	USER					Floats held – 1 bbl back to the truck
Event	21	End Job	6/2/2016	03:32:30	COM6					Good Returns Throughout job, Pipe was reciprocated during cement
Event	22	Other	6/2/2016	03:41:16	USER					Rig Circulated 2 hrs prior to cement job at 16 bpm 1093 psi. Mud report PV 12 YP 21 Gel 8,12,15. Gas 63
Event	23	Pre-Rig Down Safety Meeting	6/2/2016	3:50:00	USER					40 lbs Sugar used, Bottom plug not used and removed from ticket. 7 add hrs charged
Event	24	Rig-Down Equipment	6/2/2016	4:00:00	USER					
Event	25	Pre-Convoy Safety Meeting	6/2/2016	4:30:00	USER					
Event	26	Crew Leave Location	6/2/2016	4:45:00	USER					Thank you for using Halliburton – Ryan Muhlestein and crew.

WPX Energy Rocky Mtn. - Federal GM 43-8 - Production



— DH Density (ppg)
 — Comb Pump Rate (bbl/min)
 — PS Pump Press (psi)
 — Pump Stg Tot (bbl)

① Call Out n/a;n/a;n/a;n/a	⑥ Pre-Rig Up Safety Meeting n/a;n/a;n/a;n/a	⑪ Test Lines 8.52;0.8;119;2.1	⑯ Drop Top Plug 8.16;5.8;161;10.2	21 End Job 8.45;0;26;0
② Pre-Convoy Safety Meeting n/a;n/a;n/a;n/a	⑦ Rig-Up Equipment n/a;n/a;n/a;n/a	⑫ Pump Spacer 1 8.48;0;64;0	⑰ Pump Displacement 7.83;1;38;0.1	22 Pre-Rig Down Safety Meeting n/a;n/a;n/a;n/a
③ Crew Leave Yard n/a;n/a;n/a;n/a	⑧ Pre-Job Safety Meeting 8.45;0;19;21.2	⑬ Pump Spacer 2 8.5;1.5;186;0	⑱ Slow Rate 8.53;4;1121;106.6	23 Rig-Down Equipment n/a;n/a;n/a;n/a
④ Arrive At Loc n/a;n/a;n/a;n/a	⑨ Start Job 8.47;0;15;0	⑭ Pump Cement 8.49;4;358;0	⑲ Bump Plug 8.5;0;2179;117.3	24 Pre-Convoy Safety Meeting n/a;n/a;n/a;n/a
⑤ Assessment Of Location Safety Meeting n/a;n/a;n/a;n/a	⑩ Prime Pumps 8.49;0;33;0	⑮ Shutdown 12.71;0;148;282	20 Check Floats 8.48;0;1595;117.3	25 Crew Leave Location n/a;n/a;n/a;n/a

▼ **HALLIBURTON** | iCem® Service

Created: 2016-06-01 13:35:29, Version: 4.2.393

Edit

Customer: WPX ENERGY ROCKY MOUNTAIN LLC-EBUS

Job Date: 6/2/2016 12:57:23 AM

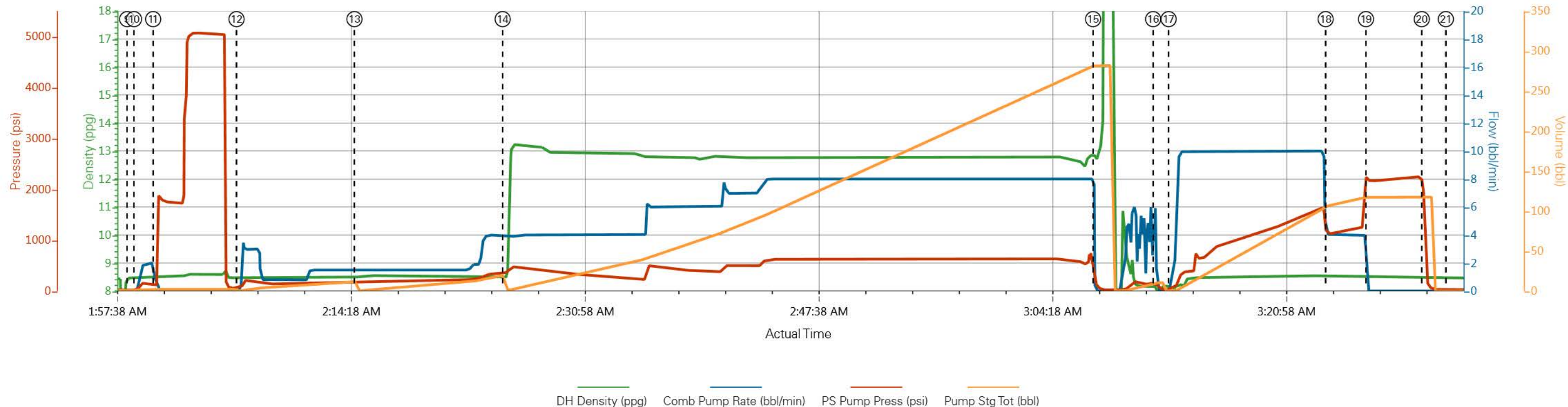
Well: Fed GM 43-8

Representative: Ted Ragsdale

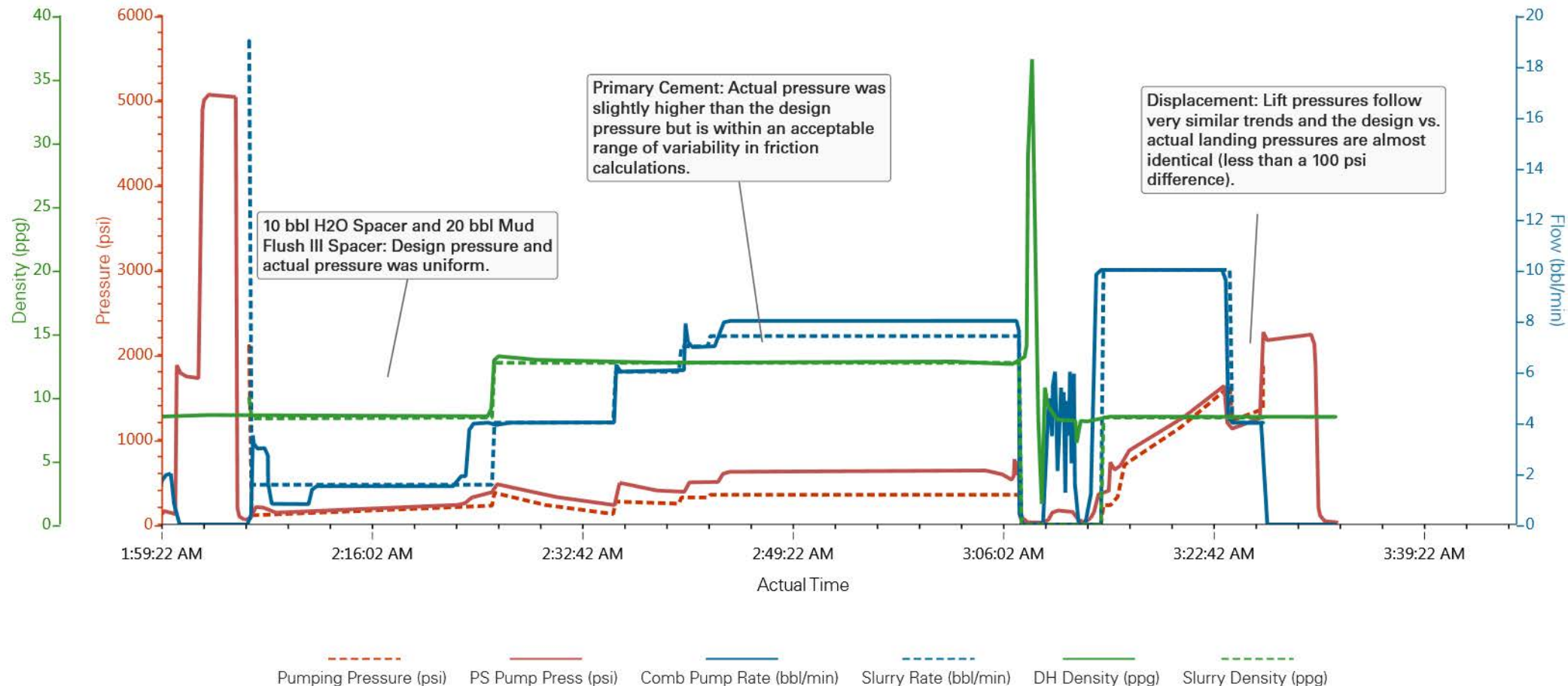
Sales Order #: 903343367

Elite 4: Muhlestein/Kukus

WPX Energy Rocky Mtn. - Federal GM 43-8 - Production



GM 43-8 Production Re-Calculation



Job Information

Request/Slurry	2322399/3	Rig Name	H&P 318	Date	31/MAY/2016
Submitted By	Evan Russell	Job Type	Production Casing	Bulk Plant	Grand Junction
Customer	WPX Energy, Inc.	Location	Garfield	Well	GM 43-8

Well Information

Casing/Liner Size	4.5 in	Depth MD	7219 ft	BHST	88°C / 190°F
Hole Size	8.75 in	Depth TVD	6471 ft	BHCT	52°C / 126°F
Pressure	3830 psi				

Drilling Fluid Information

Mud Supplier Name	Mud Trade Name	Density
-------------------	----------------	---------

Cement Information - Primary Design



Conc	UOM	Cement/Additive	Sample Type	Sample Date	Lot No.	Cement Properties		
NeoCem GJ1						Slurry Density	12.7	lbm/gal
						Slurry Yield	1.869	ft3/sack
						Water Requirement	8.744	gal/sack
						Total Mix Fluid	8.744	gal/sack
8.74	gal/sack	Fresh Water	Lab	12.03.13		Water Source Water Chloride	Fresh Water	
		Bentonite Wyoming - PB	Bulk Blend	31.05.16	Tank 17			
		Econolite (Powder - PB)	Bulk Blend	31.05.16	U052815			
		Na2SO4 (Sodium Sulfate)	Bulk Blend	31.05.16	100615			
		Salt						
		HALAD-344 (PB)	Bulk Blend	31.05.16	15062040			
		NaCl (Sodium Chloride)	Bulk Blend	31.05.16	Tank 14			
		Salt						
		HALAD-567	Bulk Blend	31.05.16	081115-139			
		Fe-2 (citric acid)	Bulk Blend	31.05.16	G84M308K5B			

This report is the property of Halliburton Energy Services and neither it nor any part thereof, nor a copy thereof, is to be published or disclosed without first securing the expressed written approval of Halliburton. It may however be used in the course of regular business operations by any person or concern receiving such report from Halliburton. This report is for information purposes only and the content is limited to the sample described. Halliburton makes no warranties, expressed or implied, as to the accuracy of the contents or results. Any user of this report agrees Halliburton shall not be liable for any loss or damage regardless of cause, including any act or omission of Halliburton, resulting from the use hereof.

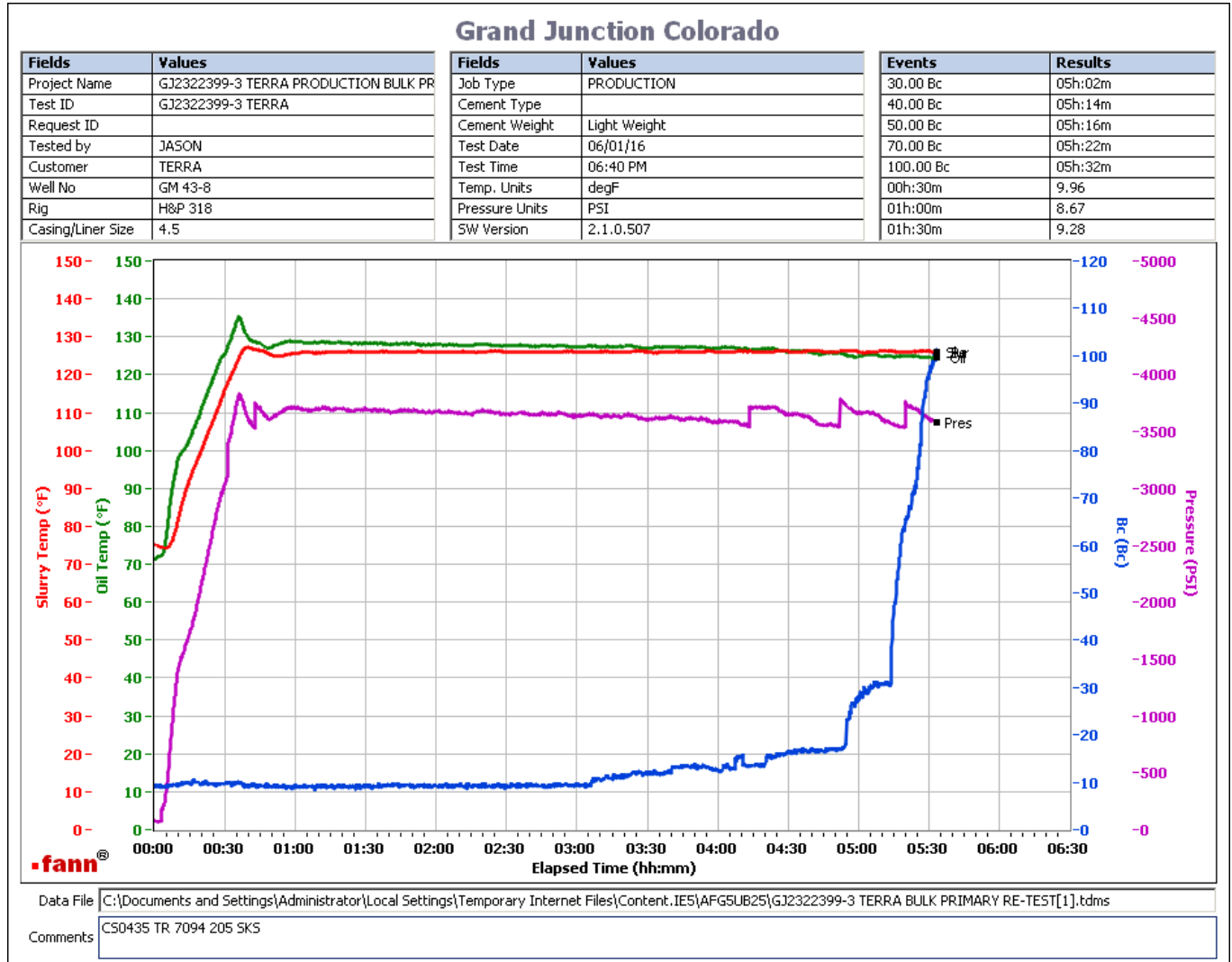
Operation Test Results Request ID 2322399/3

Thickening Time

01/JUN/2016

Temp (°F)	Pressure (psi)	Reached in (min)	Start BC	30 Bc (hh:mm)	40 Bc (hh:mm)	50 Bc (hh:mm)	70 Bc (hh:mm)	100 Bc (hh:mm)
126	3830	35	9	5:02	5:14	5:16	5:22	5:32

CS0435 TR 7094: 205 sacks of 805 total sacks



This report is the property of Halliburton Energy Services and neither it nor any part thereof, nor a copy thereof, is to be published or disclosed without first securing the expressed written approval of Halliburton. It may however be used in the course of regular business operations by any person or concern receiving such report from Halliburton. This report is for information purposes only and the content is limited to the sample described. Halliburton makes no warranties, expressed or implied, as to the accuracy of the contents or results. Any user of this report agrees Halliburton shall not be liable for any loss or damage regardless of cause, including any act or omission of Halliburton, resulting from the use hereof.

Operation Test Results Request ID 2322399/2

UCA Comp. Strength (Composite sample of all 3 trucks)

03/JUN/2016

End Temp (°F)	Pressure (psi)	50 psi (hh:mm)	100 psi (hh:mm)	500 psi (hh:mm)	1000 psi (hh:mm)	12 hr CS (psi)	24 hr CS (psi)	48 hr CS (psi)	End CS (psi)	End Time (hrs)
190	3000	6:45	7:05	8:43	9:46	1569	1966	2292	2444	72

Thickening Time

01/JUN/2016

Temp (°F)	Pressure (psi)	Reached in (min)	Start BC	30 Bc (hh:mm)	40 Bc (hh:mm)	50 Bc (hh:mm)	70 Bc (hh:mm)	100 Bc (hh:mm)
126	3830	35	14	4:15	4:31	4:44	5:00	5:07

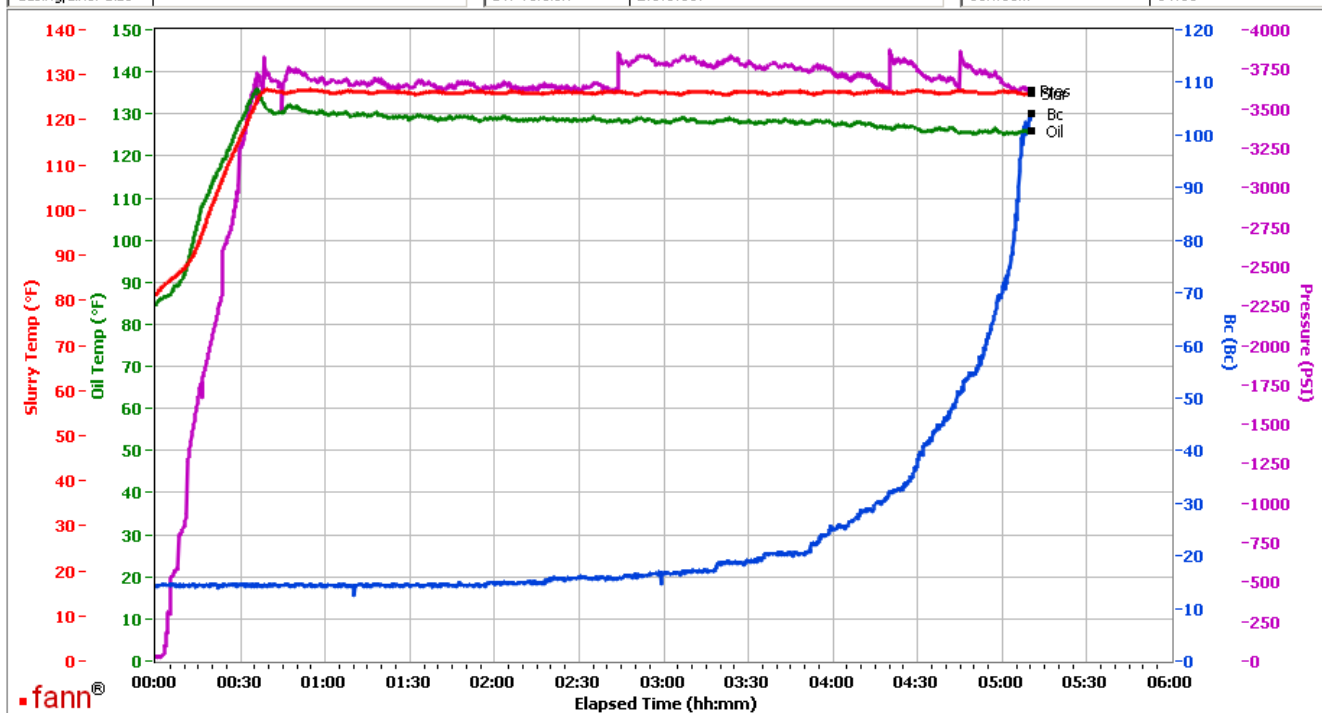
CS0433 TR 813: 300 sacks of 805 sacks

Grand Junction, Colorado

Fields	Values
Project Name	GJ2322399-2 WPX BULK PRIMARY
Test ID	GJ2322399-2 WPX BULK PRIMARY
Request ID	
Tested by	DEBA
Customer	WPX
Well No	
Rig	
Casing/Liner Size	

Fields	Values
Job Type	
Cement Type	
Cement Weight	Standard
Test Date	05/31/16
Test Time	09:50 PM
Temp. Units	degF
Pressure Units	PSI
SW Version	2.1.0.507

Events	Results
30.00 Bc	04h:15m
40.00 Bc	04h:31m
50.00 Bc	04h:44m
70.00 Bc	05h:00m
100.00 Bc	05h:07m
00h:30m	14.96
01h:00m	14.44
01h:30m	14.51



Data File C:\Documents and Settings\M290\Desktop\Test Data\GJ2322399-2 WPX BULK PRIMARY1.tdms

Comments CS0433

This report is the property of Halliburton Energy Services and neither it nor any part thereof, nor a copy thereof, is to be published or disclosed without first securing the expressed written approval of Halliburton. It may however be used in the course of regular business operations by any person or concern receiving such report from Halliburton. This report is for information purposes only and the content is limited to the sample described. Halliburton makes no warranties, expressed or implied, as to the accuracy of the contents or results. Any user of this report agrees Halliburton shall not be liable for any loss or damage regardless of cause, including any act or omission of Halliburton, resulting from the use hereof.

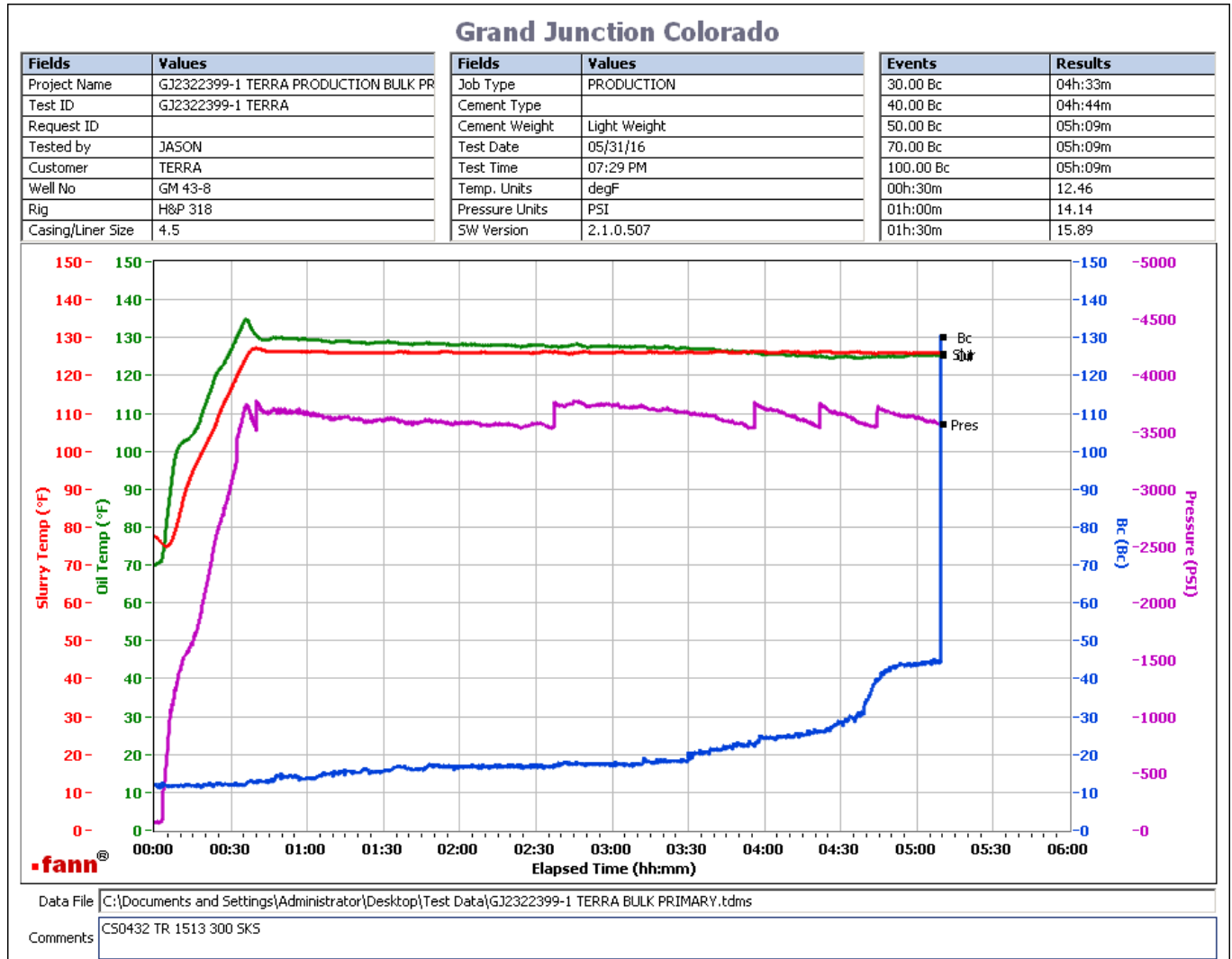
Operation Test Results Request ID 2322399/1

Thickening Time

31/MAY/2016

Temp (°F)	Pressure (psi)	Reached in (min)	Start BC	30 Bc (hh:mm)	40 Bc (hh:mm)	50 Bc (hh:mm)	70 Bc (hh:mm)	100 Bc (hh:mm)
126	3830	35	12	4:33	4:44	5:09	5:09	5:09

CS0432 TR 1513: 300 sacks of 805 total sacks



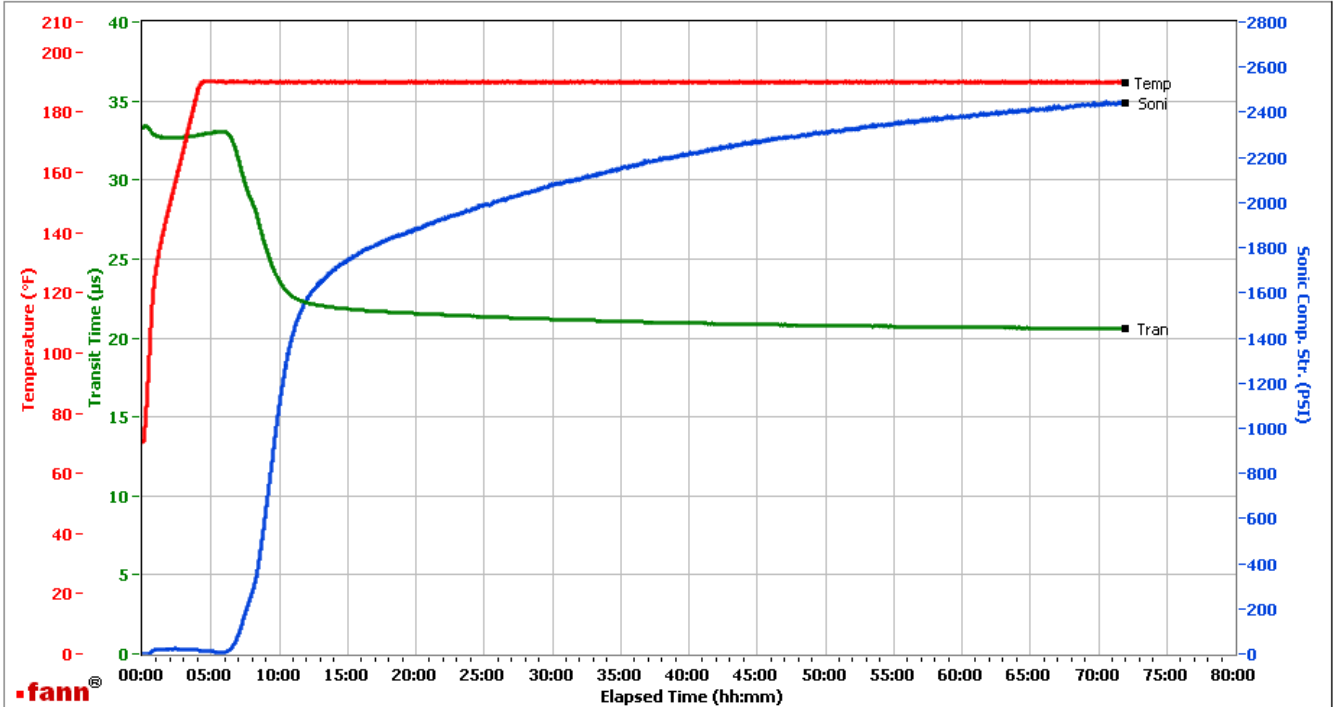
This report is the property of Halliburton Energy Services and neither it nor any part thereof, nor a copy thereof, is to be published or disclosed without first securing the expressed written approval of Halliburton. It may however be used in the course of regular business operations by any person or concern receiving such report from Halliburton. This report is for information purposes only and the content is limited to the sample described. Halliburton makes no warranties, expressed or implied, as to the accuracy of the contents or results. Any user of this report agrees Halliburton shall not be liable for any loss or damage regardless of cause, including any act or omission of Halliburton, resulting from the use hereof.

GRAND JUNCTION, COLORADO USA

Fields	Values
Project Name	2322399-2
Test ID	2322399-2 WPX GM COMPOSITE BULK UCA
Request ID	
Tested by	JASON
Customer	WPX
Well No	GM 43-8
Rig	
Casing/Liner Size	

Fields	Values
Job Type	
Cement Type	
Cement Weight	Light Weight
Test Date	5/31/2016
Test Time	12:58 PM
Temp. Units	degF
Pressure Units	PSI

Events	Results
50.00 PSI	06h:45m
100.00 PSI	07h:05m
500.00 PSI	08h:43m
1000.00 PSI	09h:46m
12h:00m	1569.02
24h:00m	1965.68
48h:00m	2292.09
72h:00m	2444.00



Data File	C:\Documents and Settings\UCA\My Documents\2016\2322399-2 WPX GM COMPOSITE BULK UCA @190.tdms
Comments	CS0432 AND CS0433 COMPOSITE

*UCA sample of all three tucks

This report is the property of Halliburton Energy Services and neither it nor any part thereof, nor a copy thereof, is to be published or disclosed without first securing the expressed written approval of Halliburton. It may however be used in the course of regular business operations by any person or concern receiving such report from Halliburton. This report is for information purposes only and the content is limited to the sample described. Halliburton makes no warranties, expressed or implied, as to the accuracy of the contents or results. Any user of this report agrees Halliburton shall not be liable for any loss or damage regardless of cause, including any act or omission of Halliburton, resulting from the use hereof.