

HALLIBURTON

iCem[®] Service

WPX ENERGY LLC-EBUS

For: Mark Mewshaw

GM 322-9 Surface

API# 05-045-22531-00

Job Date: Wednesday, June 08, 2016

Sincerely,
Grand Junction Cement Engineering

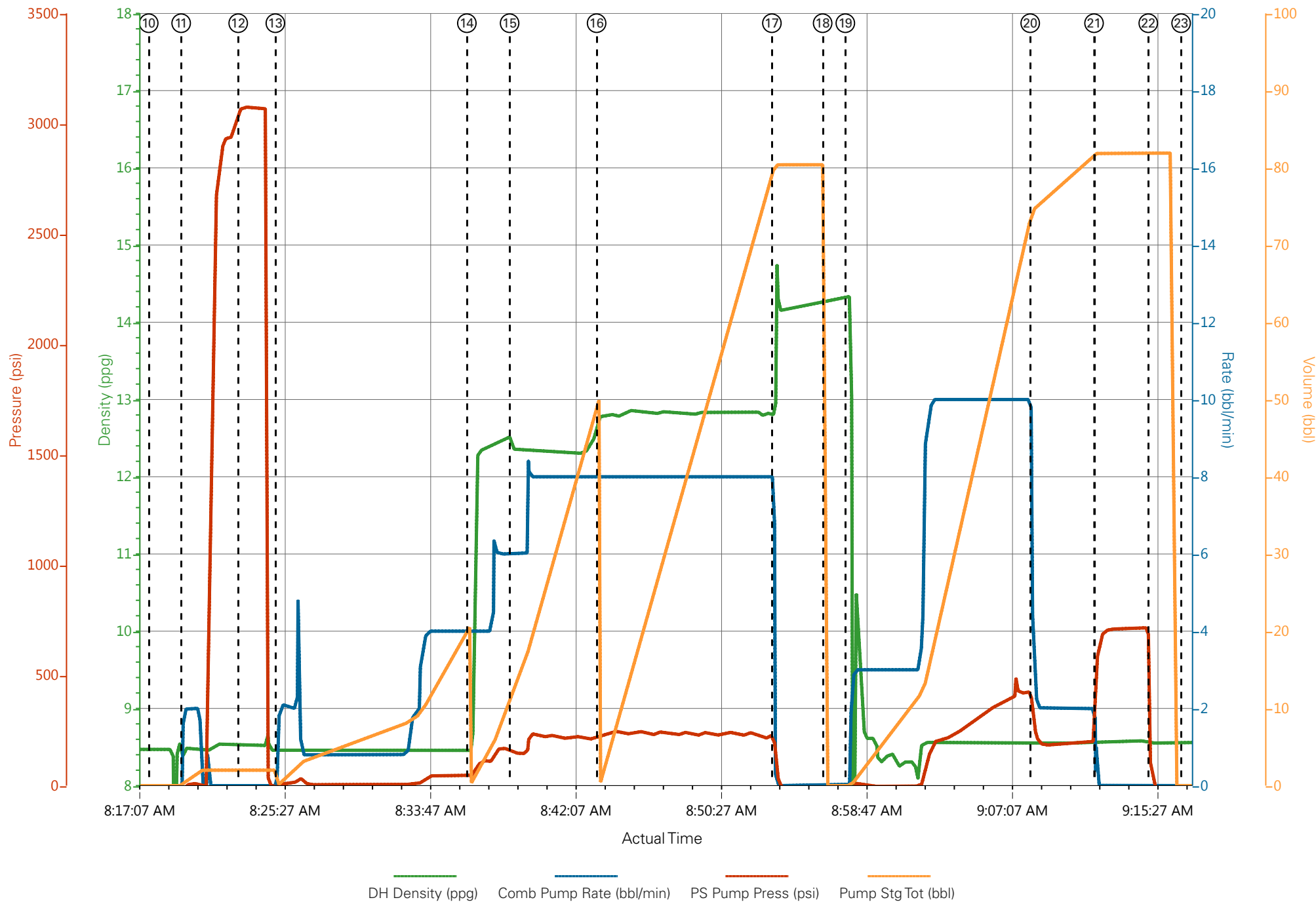
1.0 Real-Time Job Summary

1.1 Job Event Log

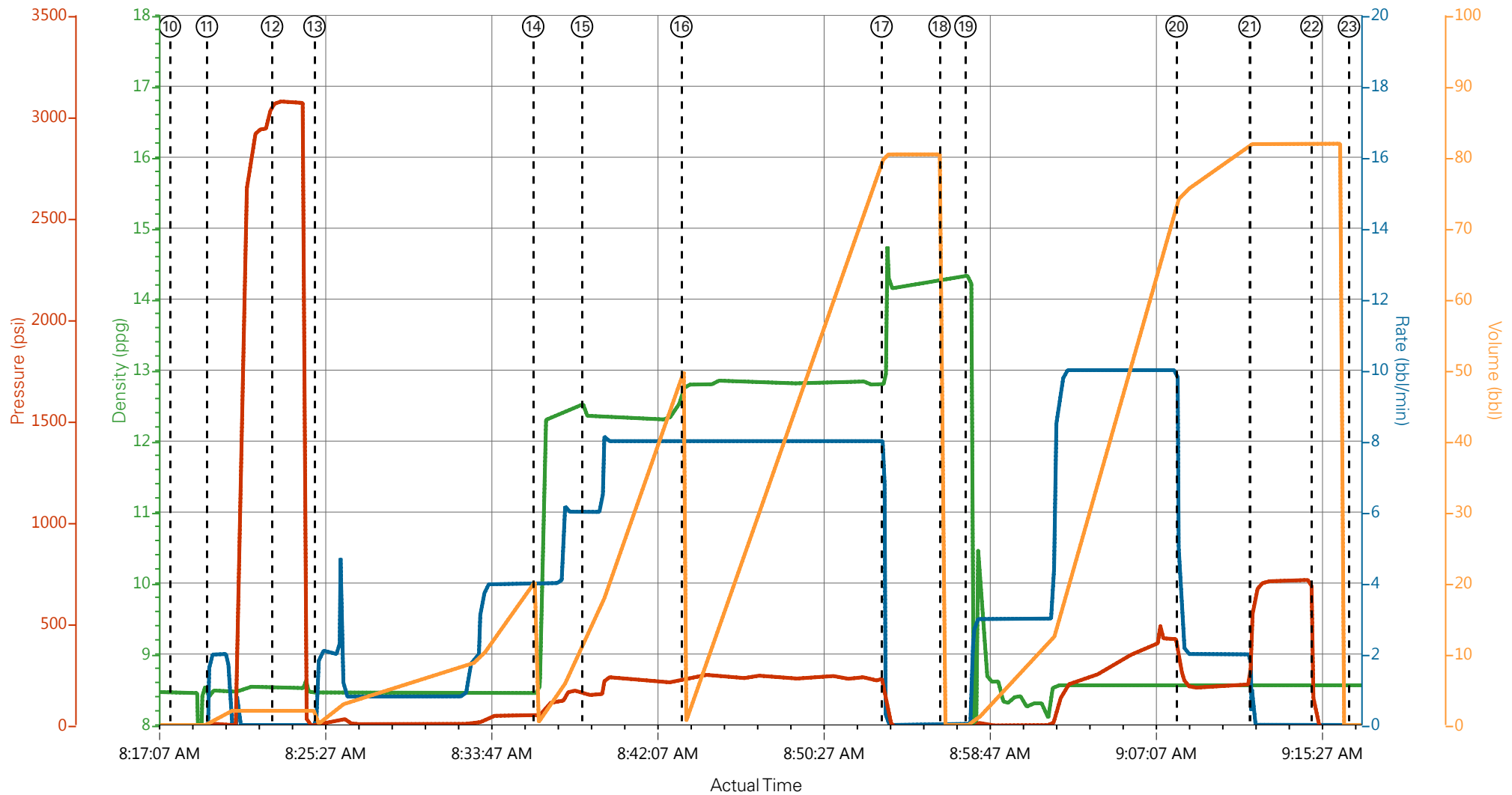
Type	Seq. No.	Graph Label	Date	Time	Source	DH Density (ppg)	Comb Pump Rate (bbl/min)	PS Pump Press (psi)	Pump Stg Tot (bbl)	Comments
Event	1	Call Out	6/7/2016	21:00:00	USER					O/L time 0300
Event	2	Pre-Convoy Safety Meeting	6/7/2016	22:45:00	USER					
Event	3	Crew Leave Yard	6/7/2016	23:00:00	USER					1 Elite, 1 660, 1 pickup
Event	4	Arrive At Location	6/8/2016	01:00:00	USER					Rig still pulling drill pipe
Event	5	Assessment Of Location Safety Meeting	6/8/2016	01:30:00	USER					JSA completed - customer offered/received SDS
Event	6	Other	6/8/2016	01:30:01	USER					Water test pH 8.0, Cl 0, temp 61 degrees - rig circulating @ 10 bpm w/ 0 psi
Event	7	Pre-Rig Up Safety Meeting	6/8/2016	05:45:00	USER					
Event	8	Rig-Up Equipment	6/8/2016	06:00:00	USER					1 hard line to standpipe, water hose to upright, bulk hose to 660
Event	9	Pre-Job Safety Meeting	6/8/2016	07:45:00	USER					All HES personnel, rig crew, and company rep
Event	10	Start Job	6/8/2016	08:17:50	USER					TD 1054', TP 1052.30', SJ 46.56', Mud 9.2 ppg - PV 10, YP 18, 13 1/2" OH, 9 5/8" 32.3# H-40 csg
Event	11	Prime Pumps	6/8/2016	08:19:41	COM5	8.33	2.0	24	2.0	Fresh water
Event	12	Test Lines	6/8/2016	08:22:57	COM5			3090		Pressure held well
Event	13	Pump H2O Spacer	6/8/2016	08:25:05	COM5	8.33	2.0	55	20.0	Fresh water
Event	14	Pump Lead Cement	6/8/2016	08:36:03	COM5	12.3	8.0	245	46.6	110 sks, 12.3 ppg, 2.38 yield, 13.77 gal/sk

Event	15	Check weight	6/8/2016	08:38:30	COM5	12.3				Mud scales matched recirc
Event	16	Pump Tail Cement	6/8/2016	08:43:29	COM5	12.8	8.0	260	71.4	190 sks, 12.8 ppg, 2.11 yield, 11.78 gal/sk
Event	17	Shutdown	6/8/2016	08:53:32	USER					Wash up on top of plug
Event	18	Drop Top Plug	6/8/2016	08:56:26	COM5					Company rep verified plug launched
Event	19	Pump Displacement	6/8/2016	08:57:44	COM5	8.33	10.0	440	79.2	Fresh water
Event	20	Slow Rate	6/8/2016	09:08:20	USER	8.33	2.0	205	10.0	Good returns throughout job
Event	21	Bump Plug	6/8/2016	09:11:59	COM5			215		Approx 24 bbls cement to surface
Event	22	Check Floats	6/8/2016	09:15:05	USER			720		Floats held – ½ bbl flowback
Event	23	End Job	6/8/2016	09:16:58	COM5					60 lbs sugar used
Event	24	Pre-Rig Down Safety Meeting	6/8/2016	09:30:00	USER					
Event	25	Rig-Down Equipment	6/8/2016	09:45:00	USER					
Event	26	Pre-Convoy Safety Meeting	6/8/2016	10:15:00	USER					
Event	27	Crew Leave Location	6/8/2016	10:30:00	USER					Thank you for using Halliburton - Ed Deussen and crew

WPX- GM 322-9 - 9 5/8" Surface



WPX- GM 322-9 - 9 5/8" Surface



- | | | | | |
|---|-----------------------------|--------------------|--------------------------------|------------------------------|
| ① Call Out | ⑦ Pre-Rig Up Safety Meeting | ⑬ Pump H2O Spacer | ⑲ Pump Displacement | 25 Rig-Down Equipment |
| ② Pre-Convoy Safety Meeting | ⑧ Rig-Up Equipment | ⑭ Pump Lead Cement | 20 Slow Rate | 26 Pre-Convoy Safety Meeting |
| ③ Crew Leave Yard | ⑨ Pre-Job Safety Meeting | ⑮ Check weight | 21 Bump Plug | 27 Crew Leave Location |
| ④ Arrive At Location | ⑩ Start Job | ⑯ Pump Tail Cement | 22 Check Floats | |
| ⑤ Assessment Of Location Safety Meeting | ⑪ Prime Pumps | ⑰ Shutdown | 23 End Job | |
| ⑥ Other | ⑫ Test Lines | ⑱ DropTop Plug | 24 Pre-Rig Down Safety Meeting | |

▼ **HALLIBURTON** | iCem® Service

Created: 2016-06-08 04:09:44, Version: 4.2.393

Edit

Customer: WPX ENERGY LLC-EBUS

Job Date: 6/8/2016 6:50:18 AM

Well: GM 322-9

Representative: Beaude Oaks

Sales Order #: 903352742

Elite #8: Ed Deussen / Carl Kukus