



PROJECT DETAILS: Weld County, CO NAD 83

Geodetic System: US State Plane 1983  
Datum: North American Datum 1983  
Ellipsoid: GRS 1980  
Zone: Colorado Northern Zone  
System Datum: Mean Sea Level  
Local North: True

Project: Weld County, CO NAD 83  
Site: Ruh 6-62-11 14 NWNE Pad  
Well: Ruh 6-62-11-0758A2  
Wellbore: OH  
Design: Plan 1



Azimuths to True North  
Magnetic North: 8.18°



Magnetic Field  
Strength: 52608.9nT  
Dip Angle: 67.07°  
Date: 9/12/2016  
Model: BGGM2016

Plan: Plan 1 (Ruh 6-62-11-0758A2/OH)

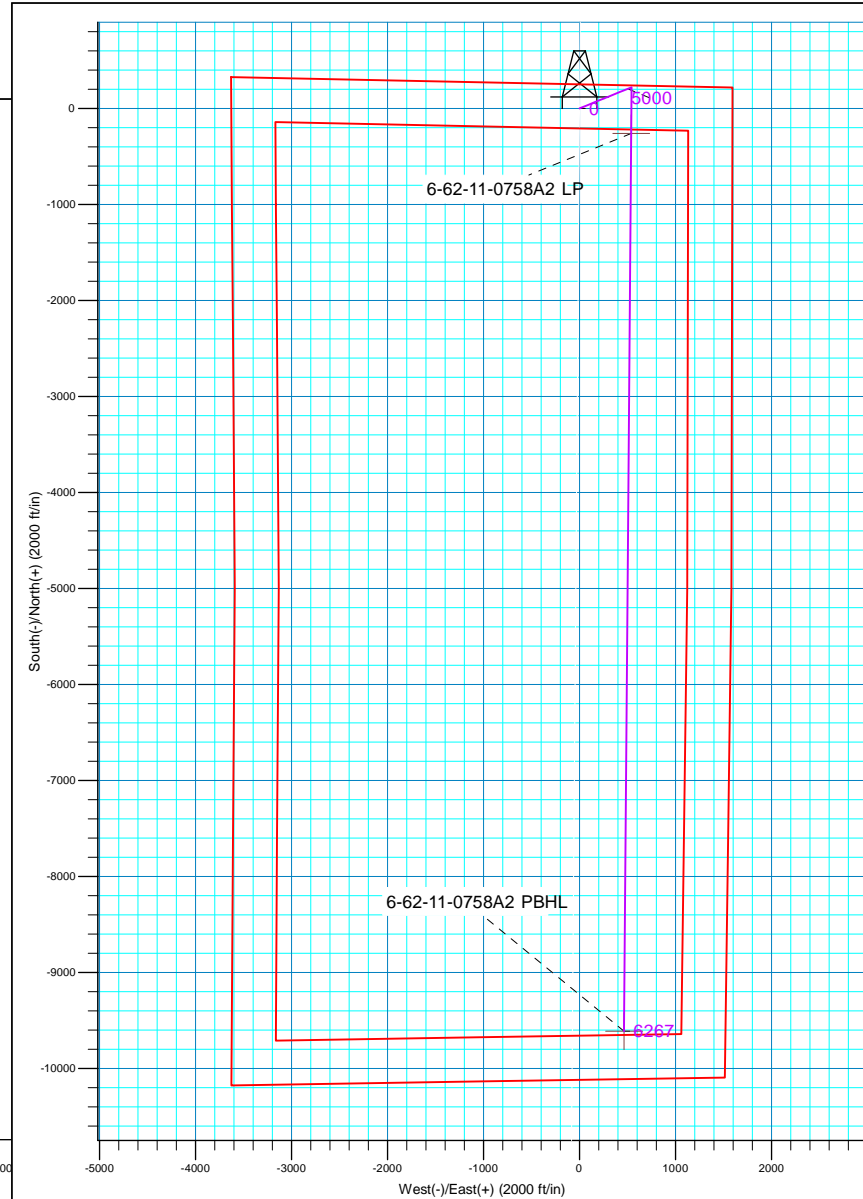
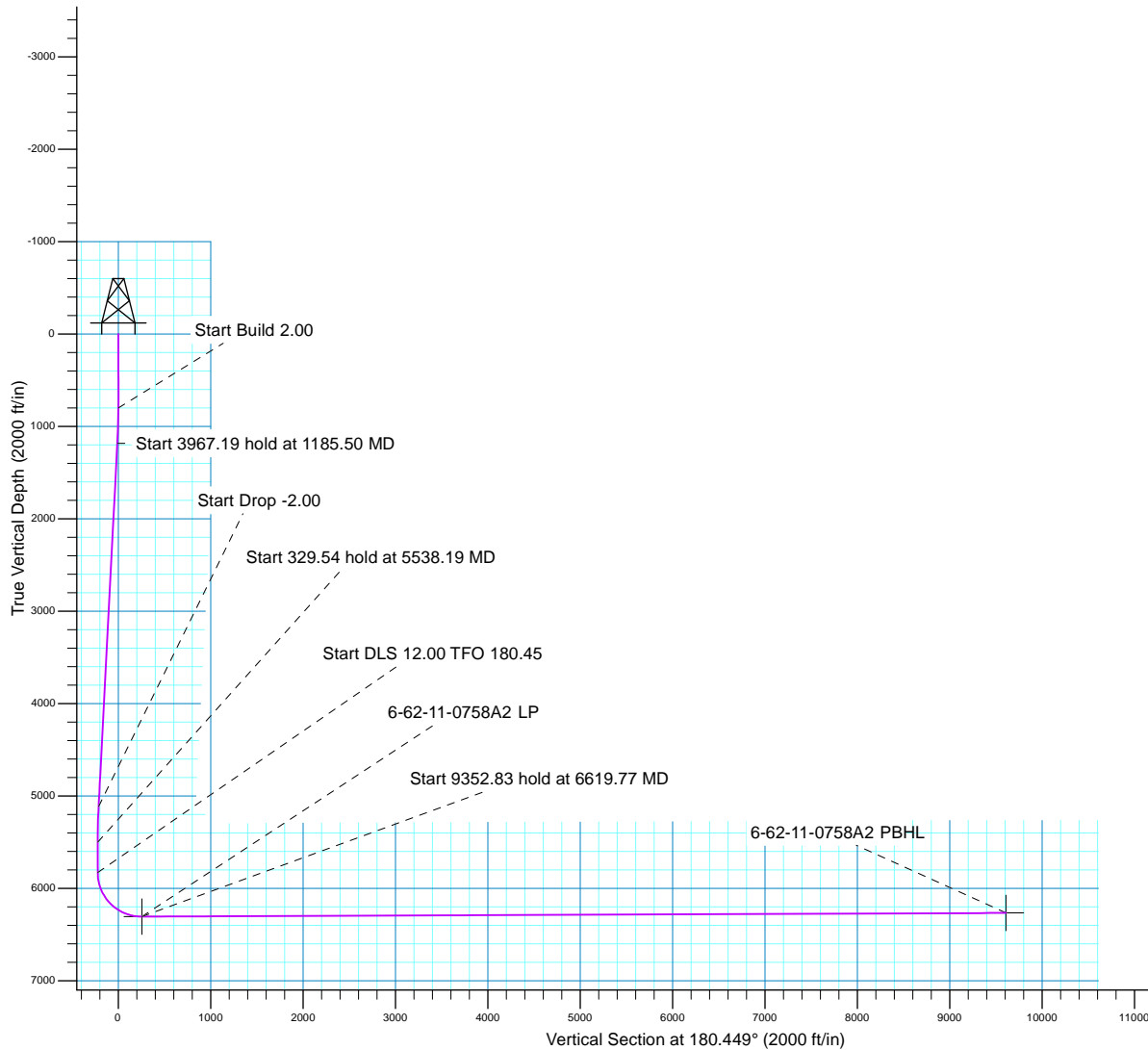
Created By: Seth Burstad Date: 9-13-2016

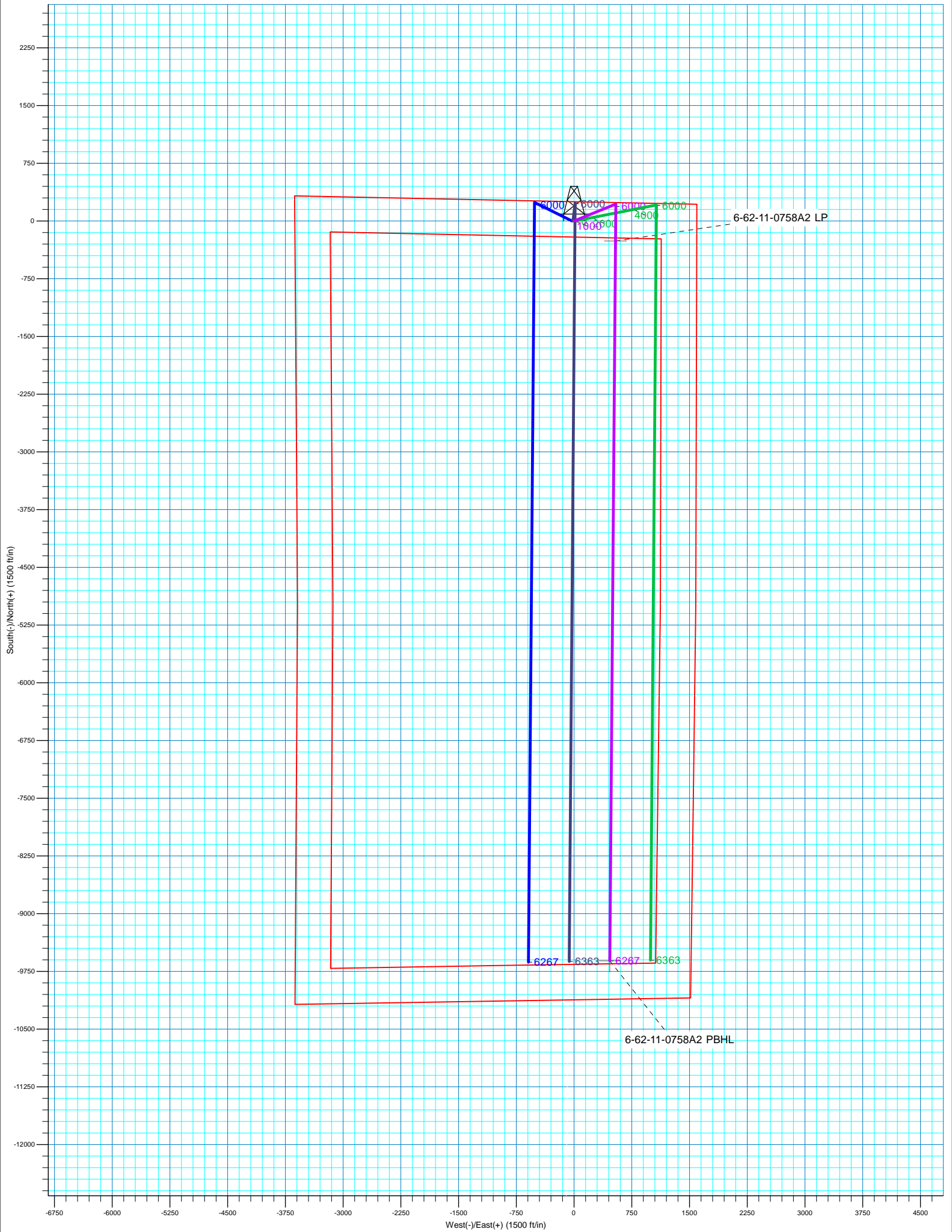
SECTION DETAILS

MD	Inc	Azi	TVD	+N/-S	+E/-W	Dleg	TFace	Vsect
0.00	0.00	0.000	0.00	0.00	0.00	0.00	0.00	0.00
800.00	0.00	0.000	800.00	0.00	0.00	0.00	0.00	0.00
1185.50	7.71	67.936	1184.34	9.73	24.00	2.00	67.94	-9.92
5152.69	7.71	67.936	5115.66	209.66	517.26	0.00	0.00	-213.71
5538.19	0.00	0.000	5500.00	219.39	541.26	2.00	180.00	-223.62
5867.73	0.00	0.000	5829.54	219.39	541.26	0.00	0.00	-223.62
6619.77	90.25	180.449	6307.00	-260.10	537.51	12.00	180.45	255.88
15972.59	90.25	180.449	6267.00	-9612.55	464.27	0.00	0.00	9608.62

WELL DETAILS: Ruh 6-62-11-0758A2

		GL 4749' & KB 20' @ 4769.00ft		4749.00	Longitude
+N/-S	+E/-W	Northing	Easting	Latitude	
0.00	0.00	1430275.98	3337683.64	40° 30' 29.379 N	104° 17' 8.020 W







## **Bill Barrett Corp.**

Weld County, CO NAD 83  
Ruh 6-62-11 14 NWNE Pad  
Ruh 6-62-11-0758A2

OH

Plan: Plan 1

## **Standard Planning Report**

13 September, 2016



<b>Database:</b>	Casper District	<b>Local Co-ordinate Reference:</b>	Well Ruh 6-62-11-0758A2
<b>Company:</b>	Bill Barrett Corp.	<b>TVD Reference:</b>	GL 4749' & KB 20' @ 4769.00ft
<b>Project:</b>	Weld County, CO NAD 83	<b>MD Reference:</b>	GL 4749' & KB 20' @ 4769.00ft
<b>Site:</b>	Ruh 6-62-11 14 NWNE Pad	<b>North Reference:</b>	True
<b>Well:</b>	Ruh 6-62-11-0758A2	<b>Survey Calculation Method:</b>	Minimum Curvature
<b>Wellbore:</b>	OH		
<b>Design:</b>	Plan 1		

<b>Project</b>	Weld County, CO NAD 83		
<b>Map System:</b>	US State Plane 1983	<b>System Datum:</b>	Mean Sea Level
<b>Geo Datum:</b>	North American Datum 1983		
<b>Map Zone:</b>	Colorado Northern Zone		

Site	Ruh 6-62-11 14 NWNE Pad, Site Center: Ruh 6-62-11-0857B2				
Site Position:		Northing:	1,430,276.20 usft	Latitude:	40° 30' 29.380 N
From:	Lat/Long	Easting:	3,337,698.94 usft	Longitude:	104° 17' 7.822 W
Position Uncertainty:	0.00 ft	Slot Radius:	13.200 in	Grid Convergence:	0.78

Well	Ruh 6-62-11-0758A2, 250' FNL 1594' FEL Sec 11 T6N R62W					
Well Position	+N/-S	-0.02 ft	Northing:	1,430,275.98 usft	Latitude:	40° 30' 29.379 N
	+E/-W	-15.29 ft	Easting:	3,337,683.64 usft	Longitude:	104° 17' 8.020 W
Position Uncertainty		0.00 ft	Wellhead Elevation:	0.00 ft	Ground Level:	4,749.00 ft

<b>Wellbore</b>	OH				
<b>Magnetics</b>	<b>Model Name</b>	<b>Sample Date</b>	<b>Declination (°)</b>	<b>Dip Angle (°)</b>	<b>Field Strength (nT)</b>
	BGGM2016	9/12/2016	8.18	67.07	52,609

<b>Design</b>	Plan 1			
<b>Audit Notes:</b>				
<b>Version:</b>	<b>Phase:</b>	PLAN	<b>Tie On Depth:</b>	0.00
<b>Vertical Section:</b>	<b>Depth From (TVD) (ft)</b>	<b>+N/-S (ft)</b>	<b>+E/-W (ft)</b>	<b>Direction (°)</b>
	0.00	0.00	0.00	180.449

<b>Plan Sections</b>										
Measured Depth (ft)	Inclination (°)	Azimuth (°)	Vertical Depth (ft)	+N/-S (ft)	+E/-W (ft)	Dogleg Rate (°/100ft)	Build Rate (°/100ft)	Turn Rate (°/100ft)	TFO (°)	Target
0.00	0.00	0.000	0.00	0.00	0.00	0.00	0.00	0.00	0.00	
800.00	0.00	0.000	800.00	0.00	0.00	0.00	0.00	0.00	0.00	
1,185.50	7.71	67.936	1,184.34	9.73	24.00	2.00	2.00	0.00	67.94	
5,152.69	7.71	67.936	5,115.66	209.66	517.26	0.00	0.00	0.00	0.00	
5,538.19	0.00	0.000	5,500.00	219.39	541.26	2.00	-2.00	0.00	180.00	
5,867.73	0.00	0.000	5,829.54	219.39	541.26	0.00	0.00	0.00	0.00	
6,619.77	90.25	180.449	6,307.00	-260.10	537.51	12.00	12.00	-23.88	180.45	
15,972.59	90.25	180.449	6,267.00	-9,612.55	464.27	0.00	0.00	0.00	0.00	6-62-11-0758A2 PBHI

<b>Database:</b>	Casper District	<b>Local Co-ordinate Reference:</b>	Well Ruh 6-62-11-0758A2
<b>Company:</b>	Bill Barrett Corp.	<b>TVD Reference:</b>	GL 4749' & KB 20' @ 4769.00ft
<b>Project:</b>	Weld County, CO NAD 83	<b>MD Reference:</b>	GL 4749' & KB 20' @ 4769.00ft
<b>Site:</b>	Ruh 6-62-11 14 NWNE Pad	<b>North Reference:</b>	True
<b>Well:</b>	Ruh 6-62-11-0758A2	<b>Survey Calculation Method:</b>	Minimum Curvature
<b>Wellbore:</b>	OH		
<b>Design:</b>	Plan 1		

Planned Survey									
Measured Depth (ft)	Inclination (°)	Azimuth (°)	Vertical Depth (ft)	+N/-S (ft)	+E/-W (ft)	Vertical Section (ft)	Dogleg Rate (°/100ft)	Build Rate (°/100ft)	Turn Rate (°/100ft)
0.00	0.00	0.000	0.00	0.00	0.00	0.00	0.00	0.00	0.00
100.00	0.00	0.000	100.00	0.00	0.00	0.00	0.00	0.00	0.00
200.00	0.00	0.000	200.00	0.00	0.00	0.00	0.00	0.00	0.00
300.00	0.00	0.000	300.00	0.00	0.00	0.00	0.00	0.00	0.00
400.00	0.00	0.000	400.00	0.00	0.00	0.00	0.00	0.00	0.00
500.00	0.00	0.000	500.00	0.00	0.00	0.00	0.00	0.00	0.00
600.00	0.00	0.000	600.00	0.00	0.00	0.00	0.00	0.00	0.00
700.00	0.00	0.000	700.00	0.00	0.00	0.00	0.00	0.00	0.00
800.00	0.00	0.000	800.00	0.00	0.00	0.00	0.00	0.00	0.00
<b>Start Build 2.00</b>									
900.00	2.00	67.936	899.98	0.66	1.62	-0.67	2.00	2.00	0.00
1,000.00	4.00	67.936	999.84	2.62	6.47	-2.67	2.00	2.00	0.00
1,100.00	6.00	67.936	1,099.45	5.90	14.54	-6.01	2.00	2.00	0.00
1,185.50	7.71	67.936	1,184.34	9.73	24.00	-9.92	2.00	2.00	0.00
<b>Start 3967.19 hold at 1185.50 MD</b>									
1,200.00	7.71	67.936	1,198.71	10.46	25.80	-10.66	0.00	0.00	0.00
1,300.00	7.71	67.936	1,297.80	15.50	38.24	-15.80	0.00	0.00	0.00
1,400.00	7.71	67.936	1,396.90	20.54	50.67	-20.94	0.00	0.00	0.00
1,500.00	7.71	67.936	1,495.99	25.58	63.10	-26.07	0.00	0.00	0.00
1,600.00	7.71	67.936	1,595.09	30.62	75.54	-31.21	0.00	0.00	0.00
1,700.00	7.71	67.936	1,694.19	35.66	87.97	-36.35	0.00	0.00	0.00
1,800.00	7.71	67.936	1,793.28	40.70	100.40	-41.48	0.00	0.00	0.00
1,900.00	7.71	67.936	1,892.38	45.74	112.84	-46.62	0.00	0.00	0.00
2,000.00	7.71	67.936	1,991.47	50.78	125.27	-51.76	0.00	0.00	0.00
2,100.00	7.71	67.936	2,090.57	55.82	137.71	-56.89	0.00	0.00	0.00
2,200.00	7.71	67.936	2,189.67	60.86	150.14	-62.03	0.00	0.00	0.00
2,300.00	7.71	67.936	2,288.76	65.90	162.57	-67.17	0.00	0.00	0.00
2,400.00	7.71	67.936	2,387.86	70.94	175.01	-72.30	0.00	0.00	0.00
2,500.00	7.71	67.936	2,486.95	75.97	187.44	-77.44	0.00	0.00	0.00
2,600.00	7.71	67.936	2,586.05	81.01	199.87	-82.58	0.00	0.00	0.00
2,700.00	7.71	67.936	2,685.15	86.05	212.31	-87.72	0.00	0.00	0.00
2,800.00	7.71	67.936	2,784.24	91.09	224.74	-92.85	0.00	0.00	0.00
2,900.00	7.71	67.936	2,883.34	96.13	237.17	-97.99	0.00	0.00	0.00
3,000.00	7.71	67.936	2,982.43	101.17	249.61	-103.13	0.00	0.00	0.00
3,100.00	7.71	67.936	3,081.53	106.21	262.04	-108.26	0.00	0.00	0.00
3,200.00	7.71	67.936	3,180.63	111.25	274.47	-113.40	0.00	0.00	0.00
3,300.00	7.71	67.936	3,279.72	116.29	286.91	-118.54	0.00	0.00	0.00
3,400.00	7.71	67.936	3,378.82	121.33	299.34	-123.67	0.00	0.00	0.00
3,500.00	7.71	67.936	3,477.91	126.37	311.77	-128.81	0.00	0.00	0.00
3,600.00	7.71	67.936	3,577.01	131.41	324.21	-133.95	0.00	0.00	0.00
3,700.00	7.71	67.936	3,676.11	136.45	336.64	-139.08	0.00	0.00	0.00
3,800.00	7.71	67.936	3,775.20	141.49	349.07	-144.22	0.00	0.00	0.00
3,900.00	7.71	67.936	3,874.30	146.53	361.51	-149.36	0.00	0.00	0.00
4,000.00	7.71	67.936	3,973.39	151.57	373.94	-154.50	0.00	0.00	0.00
4,100.00	7.71	67.936	4,072.49	156.61	386.37	-159.63	0.00	0.00	0.00
4,200.00	7.71	67.936	4,171.59	161.65	398.81	-164.77	0.00	0.00	0.00
4,300.00	7.71	67.936	4,270.68	166.69	411.24	-169.91	0.00	0.00	0.00
4,400.00	7.71	67.936	4,369.78	171.73	423.67	-175.04	0.00	0.00	0.00
4,500.00	7.71	67.936	4,468.87	176.77	436.11	-180.18	0.00	0.00	0.00
4,600.00	7.71	67.936	4,567.97	181.81	448.54	-185.32	0.00	0.00	0.00
4,700.00	7.71	67.936	4,667.07	186.85	460.97	-190.45	0.00	0.00	0.00
4,800.00	7.71	67.936	4,766.16	191.89	473.41	-195.59	0.00	0.00	0.00
4,900.00	7.71	67.936	4,865.26	196.93	485.84	-200.73	0.00	0.00	0.00
5,000.00	7.71	67.936	4,964.35	201.97	498.27	-205.86	0.00	0.00	0.00

<b>Database:</b>	Casper District	<b>Local Co-ordinate Reference:</b>	Well Ruh 6-62-11-0758A2
<b>Company:</b>	Bill Barrett Corp.	<b>TVD Reference:</b>	GL 4749' & KB 20' @ 4769.00ft
<b>Project:</b>	Weld County, CO NAD 83	<b>MD Reference:</b>	GL 4749' & KB 20' @ 4769.00ft
<b>Site:</b>	Ruh 6-62-11 14 NWNE Pad	<b>North Reference:</b>	True
<b>Well:</b>	Ruh 6-62-11-0758A2	<b>Survey Calculation Method:</b>	Minimum Curvature
<b>Wellbore:</b>	OH		
<b>Design:</b>	Plan 1		

Planned Survey									
Measured Depth (ft)	Inclination (°)	Azimuth (°)	Vertical Depth (ft)	+N/-S (ft)	+E/-W (ft)	Vertical Section (ft)	Dogleg Rate (°/100ft)	Build Rate (°/100ft)	Turn Rate (°/100ft)
5,100.00	7.71	67.936	5,063.45	207.01	510.71	-211.00	0.00	0.00	0.00
5,152.69	7.71	67.936	5,115.66	209.66	517.26	-213.71	0.00	0.00	0.00
<b>Start Drop -2.00</b>									
5,200.00	6.76	67.936	5,162.60	211.90	522.78	-215.99	2.00	-2.00	0.00
5,300.00	4.76	67.936	5,262.09	215.67	532.09	-219.84	2.00	-2.00	0.00
5,400.00	2.76	67.936	5,361.86	218.14	538.17	-222.35	2.00	-2.00	0.00
5,500.00	0.76	67.936	5,461.81	219.29	541.02	-223.53	2.00	-2.00	0.00
5,538.19	0.00	0.000	5,500.00	219.39	541.26	-223.62	2.00	-2.00	0.00
<b>Start 329.54 hold at 5538.19 MD</b>									
5,600.00	0.00	0.000	5,561.81	219.39	541.26	-223.62	0.00	0.00	0.00
5,700.00	0.00	0.000	5,661.81	219.39	541.26	-223.62	0.00	0.00	0.00
5,800.00	0.00	0.000	5,761.81	219.39	541.26	-223.62	0.00	0.00	0.00
5,867.73	0.00	0.000	5,829.54	219.39	541.26	-223.62	0.00	0.00	0.00
<b>Start DLS 12.00 TFO 180.45</b>									
5,900.00	3.87	180.449	5,861.79	218.30	541.25	-222.53	12.00	12.00	0.00
6,000.00	15.87	180.449	5,960.13	201.19	541.12	-205.42	12.00	12.00	0.00
6,100.00	27.87	180.449	6,052.76	164.00	540.83	-168.23	12.00	12.00	0.00
6,200.00	39.87	180.449	6,135.63	108.37	540.39	-112.60	12.00	12.00	0.00
6,300.00	51.87	180.449	6,205.13	36.72	539.83	-40.95	12.00	12.00	0.00
6,400.00	63.87	180.449	6,258.22	-47.81	539.17	43.58	12.00	12.00	0.00
6,500.00	75.87	180.449	6,292.56	-141.52	538.43	137.30	12.00	12.00	0.00
6,600.00	87.87	180.449	6,306.68	-240.34	537.66	236.11	12.00	12.00	0.00
6,619.77	90.25	180.449	6,307.00	-260.10	537.51	255.88	12.00	12.00	0.00
<b>Start 9352.83 hold at 6619.77 MD</b>									
6,700.00	90.25	180.449	6,306.66	-340.33	536.88	336.11	0.00	0.00	0.00
6,800.00	90.25	180.449	6,306.23	-440.32	536.09	436.11	0.00	0.00	0.00
6,900.00	90.25	180.449	6,305.80	-540.32	535.31	536.11	0.00	0.00	0.00
7,000.00	90.25	180.449	6,305.37	-640.32	534.53	636.11	0.00	0.00	0.00
7,100.00	90.25	180.449	6,304.95	-740.31	533.75	736.11	0.00	0.00	0.00
7,200.00	90.25	180.449	6,304.52	-840.31	532.96	836.11	0.00	0.00	0.00
7,300.00	90.25	180.449	6,304.09	-940.30	532.18	936.10	0.00	0.00	0.00
7,400.00	90.25	180.449	6,303.66	-1,040.30	531.40	1,036.10	0.00	0.00	0.00
7,500.00	90.25	180.449	6,303.24	-1,140.30	530.61	1,136.10	0.00	0.00	0.00
7,600.00	90.25	180.449	6,302.81	-1,240.29	529.83	1,236.10	0.00	0.00	0.00
7,700.00	90.25	180.449	6,302.38	-1,340.29	529.05	1,336.10	0.00	0.00	0.00
7,800.00	90.25	180.449	6,301.95	-1,440.28	528.26	1,436.10	0.00	0.00	0.00
7,900.00	90.25	180.449	6,301.53	-1,540.28	527.48	1,536.10	0.00	0.00	0.00
8,000.00	90.25	180.449	6,301.10	-1,640.28	526.70	1,636.10	0.00	0.00	0.00
8,100.00	90.25	180.449	6,300.67	-1,740.27	525.92	1,736.10	0.00	0.00	0.00
8,200.00	90.25	180.449	6,300.24	-1,840.27	525.13	1,836.10	0.00	0.00	0.00
8,300.00	90.25	180.449	6,299.81	-1,940.26	524.35	1,936.10	0.00	0.00	0.00
8,400.00	90.25	180.449	6,299.39	-2,040.26	523.57	2,036.09	0.00	0.00	0.00
8,500.00	90.25	180.449	6,298.96	-2,140.26	522.78	2,136.09	0.00	0.00	0.00
8,600.00	90.25	180.449	6,298.53	-2,240.25	522.00	2,236.09	0.00	0.00	0.00
8,700.00	90.25	180.449	6,298.10	-2,340.25	521.22	2,336.09	0.00	0.00	0.00
8,800.00	90.25	180.449	6,297.68	-2,440.24	520.43	2,436.09	0.00	0.00	0.00
8,900.00	90.25	180.449	6,297.25	-2,540.24	519.65	2,536.09	0.00	0.00	0.00
9,000.00	90.25	180.449	6,296.82	-2,640.24	518.87	2,636.09	0.00	0.00	0.00
9,100.00	90.25	180.449	6,296.39	-2,740.23	518.09	2,736.09	0.00	0.00	0.00
9,200.00	90.25	180.449	6,295.97	-2,840.23	517.30	2,836.09	0.00	0.00	0.00
9,300.00	90.25	180.449	6,295.54	-2,940.22	516.52	2,936.09	0.00	0.00	0.00
9,400.00	90.25	180.449	6,295.11	-3,040.22	515.74	3,036.09	0.00	0.00	0.00
9,500.00	90.25	180.449	6,294.68	-3,140.22	514.95	3,136.08	0.00	0.00	0.00

<b>Database:</b>	Casper District	<b>Local Co-ordinate Reference:</b>	Well Ruh 6-62-11-0758A2
<b>Company:</b>	Bill Barrett Corp.	<b>TVD Reference:</b>	GL 4749' & KB 20' @ 4769.00ft
<b>Project:</b>	Weld County, CO NAD 83	<b>MD Reference:</b>	GL 4749' & KB 20' @ 4769.00ft
<b>Site:</b>	Ruh 6-62-11 14 NWNE Pad	<b>North Reference:</b>	True
<b>Well:</b>	Ruh 6-62-11-0758A2	<b>Survey Calculation Method:</b>	Minimum Curvature
<b>Wellbore:</b>	OH		
<b>Design:</b>	Plan 1		

Planned Survey									
Measured Depth (ft)	Inclination (°)	Azimuth (°)	Vertical Depth (ft)	+N/-S (ft)	+E/-W (ft)	Vertical Section (ft)	Dogleg Rate (°/100ft)	Build Rate (°/100ft)	Turn Rate (°/100ft)
9,600.00	90.25	180.449	6,294.25	-3,240.21	514.17	3,236.08	0.00	0.00	0.00
9,700.00	90.25	180.449	6,293.83	-3,340.21	513.39	3,336.08	0.00	0.00	0.00
9,800.00	90.25	180.449	6,293.40	-3,440.20	512.60	3,436.08	0.00	0.00	0.00
9,900.00	90.25	180.449	6,292.97	-3,540.20	511.82	3,536.08	0.00	0.00	0.00
10,000.00	90.25	180.449	6,292.54	-3,640.20	511.04	3,636.08	0.00	0.00	0.00
10,100.00	90.25	180.449	6,292.12	-3,740.19	510.26	3,736.08	0.00	0.00	0.00
10,200.00	90.25	180.449	6,291.69	-3,840.19	509.47	3,836.08	0.00	0.00	0.00
10,300.00	90.25	180.449	6,291.26	-3,940.18	508.69	3,936.08	0.00	0.00	0.00
10,400.00	90.25	180.449	6,290.83	-4,040.18	507.91	4,036.08	0.00	0.00	0.00
10,500.00	90.25	180.449	6,290.41	-4,140.18	507.12	4,136.08	0.00	0.00	0.00
10,600.00	90.25	180.449	6,289.98	-4,240.17	506.34	4,236.07	0.00	0.00	0.00
10,700.00	90.25	180.449	6,289.55	-4,340.17	505.56	4,336.07	0.00	0.00	0.00
10,800.00	90.25	180.449	6,289.12	-4,440.16	504.77	4,436.07	0.00	0.00	0.00
10,900.00	90.25	180.449	6,288.69	-4,540.16	503.99	4,536.07	0.00	0.00	0.00
11,000.00	90.25	180.449	6,288.27	-4,640.16	503.21	4,636.07	0.00	0.00	0.00
11,100.00	90.25	180.449	6,287.84	-4,740.15	502.43	4,736.07	0.00	0.00	0.00
11,200.00	90.25	180.449	6,287.41	-4,840.15	501.64	4,836.07	0.00	0.00	0.00
11,300.00	90.25	180.449	6,286.98	-4,940.14	500.86	4,936.07	0.00	0.00	0.00
11,400.00	90.25	180.449	6,286.56	-5,040.14	500.08	5,036.07	0.00	0.00	0.00
11,500.00	90.25	180.449	6,286.13	-5,140.14	499.29	5,136.07	0.00	0.00	0.00
11,600.00	90.25	180.449	6,285.70	-5,240.13	498.51	5,236.07	0.00	0.00	0.00
11,700.00	90.25	180.449	6,285.27	-5,340.13	497.73	5,336.06	0.00	0.00	0.00
11,800.00	90.25	180.449	6,284.85	-5,440.12	496.94	5,436.06	0.00	0.00	0.00
11,900.00	90.25	180.449	6,284.42	-5,540.12	496.16	5,536.06	0.00	0.00	0.00
12,000.00	90.25	180.449	6,283.99	-5,640.12	495.38	5,636.06	0.00	0.00	0.00
12,100.00	90.25	180.449	6,283.56	-5,740.11	494.60	5,736.06	0.00	0.00	0.00
12,200.00	90.25	180.449	6,283.13	-5,840.11	493.81	5,836.06	0.00	0.00	0.00
12,300.00	90.25	180.449	6,282.71	-5,940.11	493.03	5,936.06	0.00	0.00	0.00
12,400.00	90.25	180.449	6,282.28	-6,040.10	492.25	6,036.06	0.00	0.00	0.00
12,500.00	90.25	180.449	6,281.85	-6,140.10	491.46	6,136.06	0.00	0.00	0.00
12,600.00	90.25	180.449	6,281.42	-6,240.09	490.68	6,236.06	0.00	0.00	0.00
12,700.00	90.25	180.449	6,281.00	-6,340.09	489.90	6,336.06	0.00	0.00	0.00
12,800.00	90.25	180.449	6,280.57	-6,440.09	489.12	6,436.05	0.00	0.00	0.00
12,900.00	90.25	180.449	6,280.14	-6,540.08	488.33	6,536.05	0.00	0.00	0.00
13,000.00	90.25	180.449	6,279.71	-6,640.08	487.55	6,636.05	0.00	0.00	0.00
13,100.00	90.25	180.449	6,279.29	-6,740.07	486.77	6,736.05	0.00	0.00	0.00
13,200.00	90.25	180.449	6,278.86	-6,840.07	485.98	6,836.05	0.00	0.00	0.00
13,300.00	90.25	180.449	6,278.43	-6,940.07	485.20	6,936.05	0.00	0.00	0.00
13,400.00	90.25	180.449	6,278.00	-7,040.06	484.42	7,036.05	0.00	0.00	0.00
13,500.00	90.25	180.449	6,277.58	-7,140.06	483.63	7,136.05	0.00	0.00	0.00
13,600.00	90.25	180.449	6,277.15	-7,240.05	482.85	7,236.05	0.00	0.00	0.00
13,700.00	90.25	180.449	6,276.72	-7,340.05	482.07	7,336.05	0.00	0.00	0.00
13,800.00	90.25	180.449	6,276.29	-7,440.05	481.29	7,436.05	0.00	0.00	0.00
13,900.00	90.25	180.449	6,275.86	-7,540.04	480.50	7,536.04	0.00	0.00	0.00
14,000.00	90.25	180.449	6,275.44	-7,640.04	479.72	7,636.04	0.00	0.00	0.00
14,100.00	90.25	180.449	6,275.01	-7,740.03	478.94	7,736.04	0.00	0.00	0.00
14,200.00	90.25	180.449	6,274.58	-7,840.03	478.15	7,836.04	0.00	0.00	0.00
14,300.00	90.25	180.449	6,274.15	-7,940.03	477.37	7,936.04	0.00	0.00	0.00
14,400.00	90.25	180.449	6,273.73	-8,040.02	476.59	8,036.04	0.00	0.00	0.00
14,500.00	90.25	180.449	6,273.30	-8,140.02	475.80	8,136.04	0.00	0.00	0.00
14,600.00	90.25	180.449	6,272.87	-8,240.01	475.02	8,236.04	0.00	0.00	0.00
14,700.00	90.25	180.449	6,272.44	-8,340.01	474.24	8,336.04	0.00	0.00	0.00
14,800.00	90.25	180.449	6,272.02	-8,440.01	473.46	8,436.04	0.00	0.00	0.00
14,900.00	90.25	180.449	6,271.59	-8,540.00	472.67	8,536.04	0.00	0.00	0.00

<b>Database:</b>	Casper District	<b>Local Co-ordinate Reference:</b>	Well Ruh 6-62-11-0758A2
<b>Company:</b>	Bill Barrett Corp.	<b>TVD Reference:</b>	GL 4749' & KB 20' @ 4769.00ft
<b>Project:</b>	Weld County, CO NAD 83	<b>MD Reference:</b>	GL 4749' & KB 20' @ 4769.00ft
<b>Site:</b>	Ruh 6-62-11 14 NWNE Pad	<b>North Reference:</b>	True
<b>Well:</b>	Ruh 6-62-11-0758A2	<b>Survey Calculation Method:</b>	Minimum Curvature
<b>Wellbore:</b>	OH		
<b>Design:</b>	Plan 1		

Planned Survey									
Measured Depth (ft)	Inclination (°)	Azimuth (°)	Vertical Depth (ft)	+N/-S (ft)	+E/-W (ft)	Vertical Section (ft)	Dogleg Rate (°/100ft)	Build Rate (°/100ft)	Turn Rate (°/100ft)
15,000.00	90.25	180.449	6,271.16	-8,640.00	471.89	8,636.03	0.00	0.00	0.00
15,100.00	90.25	180.449	6,270.73	-8,739.99	471.11	8,736.03	0.00	0.00	0.00
15,200.00	90.25	180.449	6,270.30	-8,839.99	470.32	8,836.03	0.00	0.00	0.00
15,300.00	90.25	180.449	6,269.88	-8,939.99	469.54	8,936.03	0.00	0.00	0.00
15,400.00	90.25	180.449	6,269.45	-9,039.98	468.76	9,036.03	0.00	0.00	0.00
15,500.00	90.25	180.449	6,269.02	-9,139.98	467.97	9,136.03	0.00	0.00	0.00
15,600.00	90.25	180.449	6,268.59	-9,239.97	467.19	9,236.03	0.00	0.00	0.00
15,700.00	90.25	180.449	6,268.17	-9,339.97	466.41	9,336.03	0.00	0.00	0.00
15,800.00	90.25	180.449	6,267.74	-9,439.97	465.63	9,436.03	0.00	0.00	0.00
15,900.00	90.25	180.449	6,267.31	-9,539.96	464.84	9,536.03	0.00	0.00	0.00
15,972.59	90.25	180.449	6,267.00	-9,612.55	464.27	9,608.62	0.00	0.00	0.00
TD at 15972.60									

Design Targets									
Target Name	Dip Angle (°)	Dip Dir. (°)	TVD (ft)	+N/-S (ft)	+E/-W (ft)	Northing (usft)	Easting (usft)	Latitude	Longitude
- hit/miss target									
- Shape									
6-62-11-0758A2 PBHL	0.00	0.000	6,267.00	-9,612.55	464.27	1,420,670.71	3,338,279.52	40° 28' 54.390 N	104° 17' 2.011 W
- plan hits target center									
- Point									
6-62-11-0758A2 LP	0.00	0.000	6,307.00	-260.09	537.51	1,430,023.27	3,338,224.66	40° 30' 26.809 N	104° 17' 1.061 W
- plan hits target center									
- Point									

Plan Annotations				
Measured Depth (ft)	Vertical Depth (ft)	Local Coordinates		Comment
		+N/-S (ft)	+E/-W (ft)	
800.00	800.00	0.00	0.00	Start Build 2.00
1,185.50	1,184.34	9.73	24.00	Start 3967.19 hold at 1185.50 MD
5,152.69	5,115.66	209.66	517.26	Start Drop -2.00
5,538.19	5,500.00	219.39	541.26	Start 329.54 hold at 5538.19 MD
5,867.73	5,829.54	219.39	541.26	Start DLS 12.00 TFO 180.45
6,619.77	6,307.00	-260.10	537.51	Start 9352.83 hold at 6619.77 MD
15,972.59	6,267.00	-9,612.55	464.27	TD at 15972.60