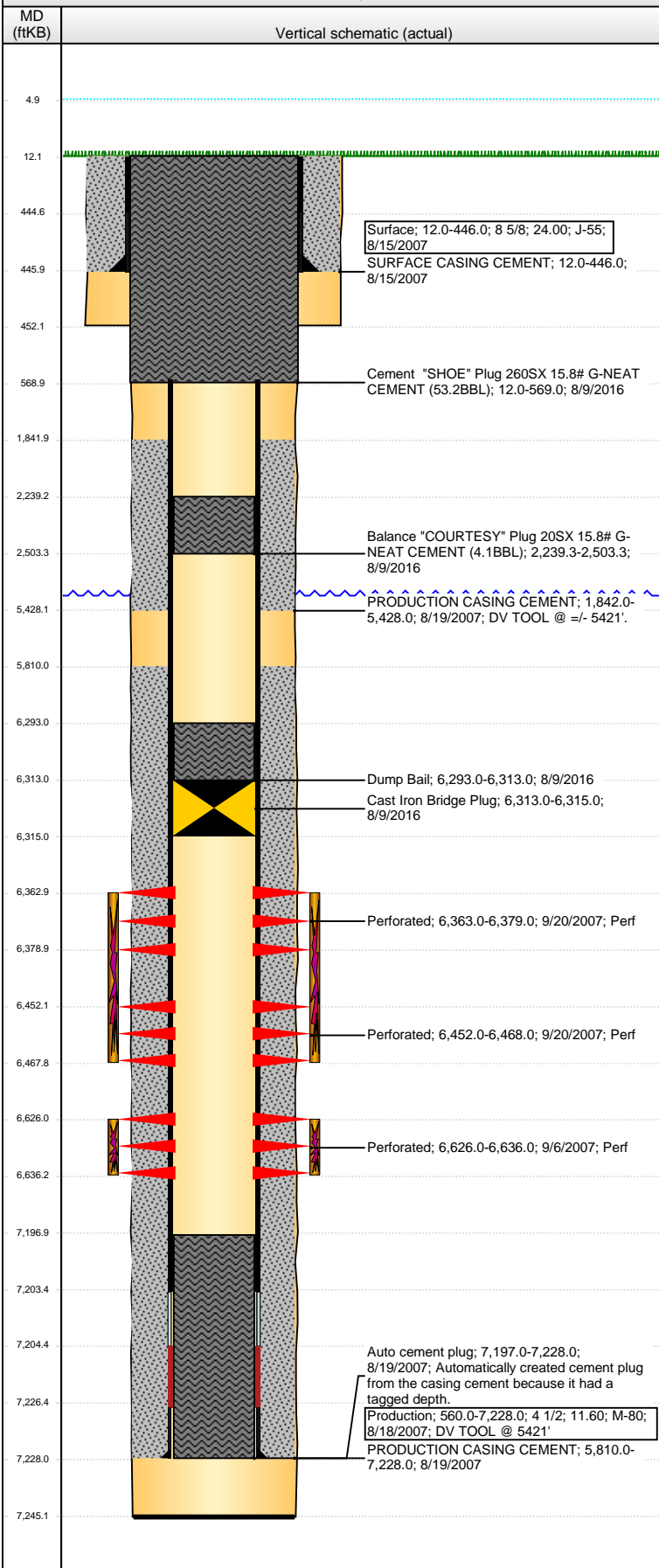


Well Name: WELLS RANCH USX BB01-07

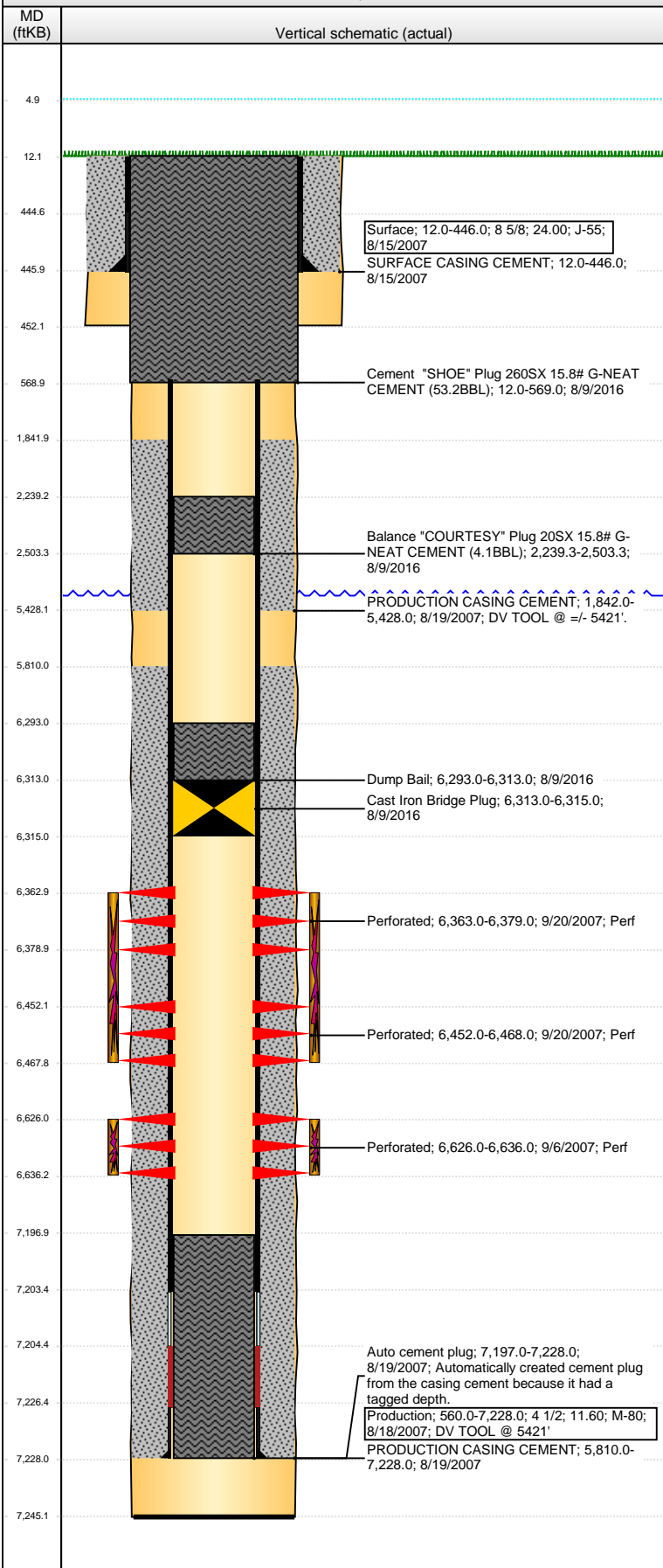
VERTICAL - ORIGINAL HOLE, 9/12/2016 8:24:37 AM



Well Header			
API	Business Unit	District	Well Config
05-123-26101	DJ BASIN	15	VERTICAL
Original KB Elevation (ft)	KB - GL / MSL (ftKB)	Spud Date	P & A Date
4,713	12.00	8/14/2007	8/9/2016
Comment			
DV TOOL @ +/- 5421'. DRILLED OUT TD DISCREPANCY: DRILL AND STATE RPT 7232', LOGGER TD 7245'			
Directions To Well			
67 & 68, E 2/10, S 2.5MI, SE 7/10, E 1.5MI, SE 3/10 TO TB, W 1/10 INTO			
Congressional Location			
Quarter 3	Quarter 4	Section	Township
SW	NE	1	5 N
Range	Range E/W Dir		
63	W		
Bottom Hole Location			
North-South Distance (ft)	From N or S Line	East-West Distance (ft)	From E or W Line
Plug Back Total Depths			
Date	Depth (ftKB)	Method	Com
8/18/2007	7,204.0	CASING TALLY	FLOAT COLLAR
9/6/2007	7,197.0	CASED HOLE LOG	DEPTH LOGGER ON CBL
9/20/2007	6,520.0	TAG	CAST IRON FLOW THROUGH PLUG
12/28/2007	7,245.0	TAG	PUSHED CIFF REMNANTS AND TAGGED
Wellbore Sections			
Section Des	Size (in)	Act Top, MD (ftKB)	Act Btm, MD (ftKB)
SURFACE	12 1/4	12	452
PRODUCTION	7 7/8	452	7,245
Zone Statuses			
Zone Name	Status Date	Status	Fluid Type
CODELL	9/23/2007	PR	
CODELL	8/9/2016	P&A	
NIOBRARA	9/23/2007	PR	
NIOBRARA	8/9/2016	P&A	
Casing Strings			
Surface, 446.0ftKB			
Casing Description	Run Date	OD (in)	Wt/Len (l...)
Surface	8/15/2007	8 5/8	24.00
Grade	Top, MD (ft...)	MD (ftKB)	
J-55	12.0	446.0	
Production, 7,228.0ftKB			
Casing Description	Run Date	OD (in)	Wt/Len (l...)
Production	8/18/2007	4 1/2	11.60
Grade	Top, MD (ft...)	MD (ftKB)	
M-80	12.0	7,228.0	
Cement			
Description	Top Depth (ftKB)	Bottom Depth (ftKB)	
SURFACE CASING CEMENT	12.0	446.0	
PRODUCTION CASING CEMENT	1,842.0	5,428.0	
PRODUCTION CASING CEMENT	5,810.0	7,228.0	
Dump Bail	6,293.0	6,313.0	
Balance 'COURTESY' Plug 20SX 15.8# G-NEAT CEMENT (4.1BBL)	2,239.3	2,503.3	
Cement 'SHOE' Plug 260SX 15.8# G-NEAT CEMENT (53.2BBL)	12.0	569.0	
Tubing Strings			
Tubing Description	Run Date	String...	ID (in)
Tubing	12/29/2007	7	2 3/8
Wt (lb/ft)	Grade	Len (ft)	Set De...
4.70	J-55	6,603.00	
Tubing Description	Run Date	String...	ID (in)
Tubing - Production	7/29/2016		2 3/8
Wt (lb/ft)	Grade	Len (ft)	Set De...
4.70	J-55	6,606.24	
Perforation Data			
Zone	Bnch/St g	Entered Shot Total	Top (ftKB)
NIOBRARA, ORIGINAL HOLE		64	6,363.00
Btm (ftKB)	Date		
6,379.00	9/20/2007		
NIOBRARA, ORIGINAL HOLE		64	6,452.00
6,468.00	9/20/2007		
CODELL, ORIGINAL HOLE		40	6,626.00
6,636.00	9/6/2007		

Well Name: WELLS RANCH USX BB01-07

VERTICAL - ORIGINAL HOLE, 9/12/2016 8:24:40 AM



Stimulations & Treatments				
Date	Zone	Primary Job Type		
9/20/2007	NIOBRARA, ORIGINAL HOLE	DRILLING/COMPLETION - ORIGINAL		
Technical Result		Tech Result Details		Tech Result Note
Comment				
Date	Zone	Primary Job Type		
9/20/2007	CODELL, ORIGINAL HOLE	DRILLING/COMPLETION - ORIGINAL		
Technical Result		Tech Result Details		Tech Result Note
Comment				
Other In Hole				
Run Date	Des	OD (in)	Top (ftKB)	Btm (ftKB)
8/9/2016	Cast Iron Bridge Plug	3.99	6,313.0	6,315.0
Logs				
Date	Type	Top, MD (ftKB)	Btm, MD (ftKB)	
8/18/2007	COMPENSATED DENSITY	2,540.0	7,225.0	
8/18/2007	INDUCTION	446.0	7,245.0	
9/6/2007	CEMENT BOND	5,610.0	7,195.0	
10/8/2014	GYRO	10.0	6,300.0	