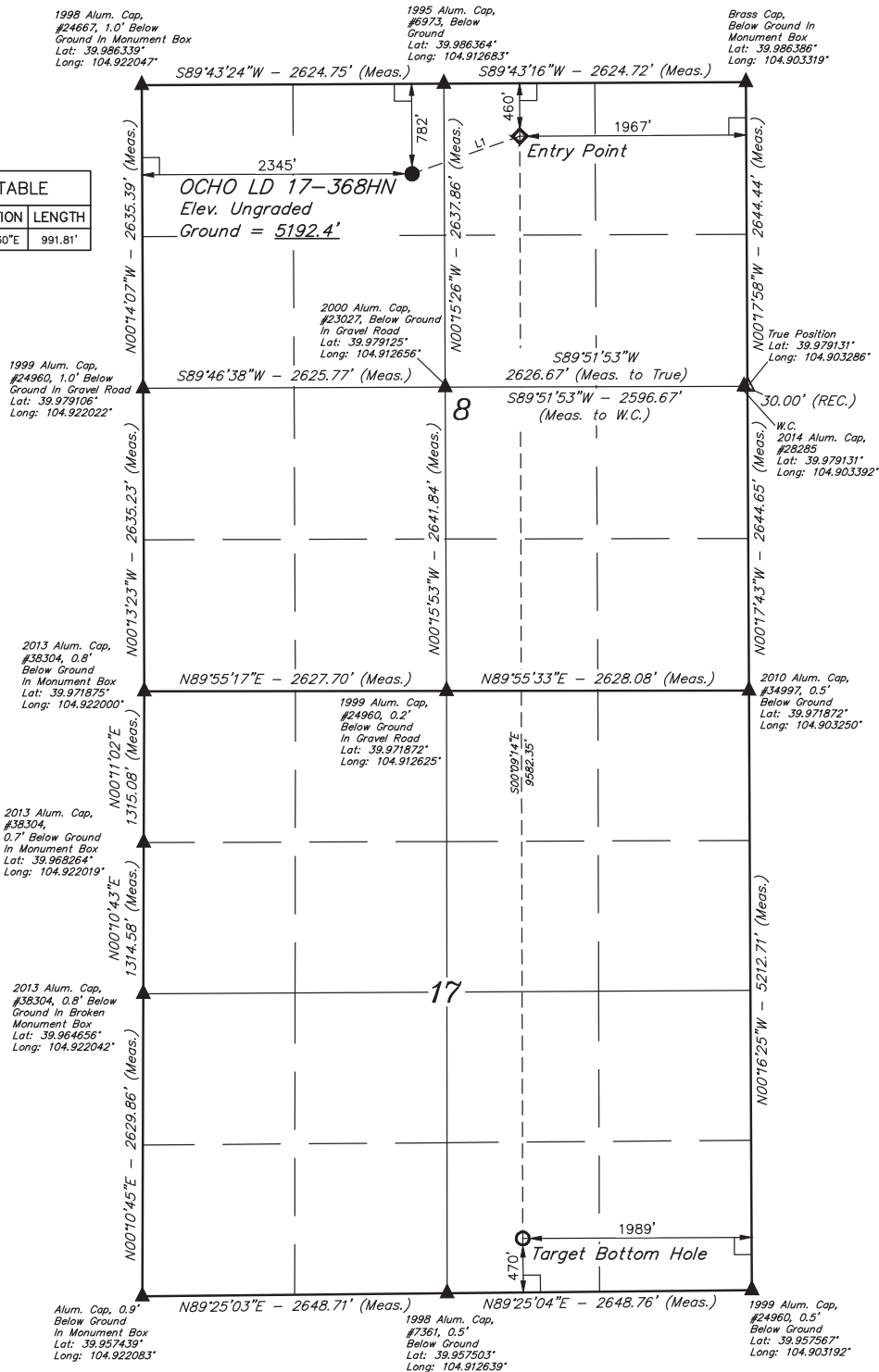


LEGEND:

- 90° SYMBOL
- PROPOSED WELLHEAD.
- TARGET BOTTOM HOLE.
- ENTRY POINT.
- SECTION CORNERS LOCATED. (NAD 83)
- SECTION CORNERS RE-ESTABLISHED. (Not Set on Ground.) (NAD 83)

T1S, R67W, 6th P.M.

| LINE TABLE | | |
|------------|-------------|---------|
| LINE | DIRECTION | LENGTH |
| L1 | N70°46'30"E | 991.81' |



| NAD 83 (SURFACE LOCATION) | NAD 83 (ENTRY POINT) | NAD 83 (TARGET BOTTOM HOLE) |
|--|--|--|
| LATITUDE = 39°59'03.17" (39.984214) | LATITUDE = 39°59'06.38" (39.985106) | LATITUDE = 39°57'31.71" (39.958808) |
| LONGITUDE = 104°54'49.23" (104.913675) | LONGITUDE = 104°54'37.19" (104.910331) | LONGITUDE = 104°54'37.05" (104.910292) |
| NAD 27 (SURFACE LOCATION) | NAD 27 (ENTRY POINT) | NAD 27 (TARGET BOTTOM HOLE) |
| LATITUDE = 39°59'03.23" (39.984231) | LATITUDE = 39°59'06.44" (39.985122) | LATITUDE = 39°57'31.77" (39.958825) |
| LONGITUDE = 104°54'47.31" (104.913142) | LONGITUDE = 104°54'35.28" (104.909800) | LONGITUDE = 104°54'35.13" (104.909758) |

BASIS OF BEARINGS

BASIS OF BEARINGS IS A G.P.S. OBSERVATION

BASIS OF ELEVATION

BENCHMARK JR 5026 LOCATED IN THE SW 1/4 SE 1/4 OF SECTION 18, T1N, R68W, 6th P.M., TAKEN FROM 1988 PUBLISHED DATUM BY THE UNITED STATES DEPARTMENT OF THE INTERIOR, GEOLOGICAL SURVEY AS BEING 5028 FEET.



UELS, LLC
Corporate Office * 85 South 200 East
Vernal, UT 84078 * (435) 789-1017



GREAT WESTERN OPERATING COMPANY

OCHO LD 17-368HN
NE 1/4 NW 1/4, SECTION 8, T1S, R67W, 6th P.M.
ADAMS COUNTY, COLORADO

| SURVEYED BY | ZANE BULLARD, G.W. | 05-24-16 | SCALE |
|-------------|--------------------|----------|------------|
| DRAWN BY | K.B. | 06-09-16 | 1" = 1000' |

WELL LOCATION PLAT

CERTIFICATE OF REGISTRATION
THIS IS TO CERTIFY THAT THE ABOVE IS A TRUE AND CORRECT COPY OF THE NOTES OF ACTUAL SURVEYS MADE BY ME OR UNDER MY SUPERVISION AND THAT THE SAME ARE TRUE AND CORRECT TO THE BEST OF MY KNOWLEDGE AND BELIEF.

