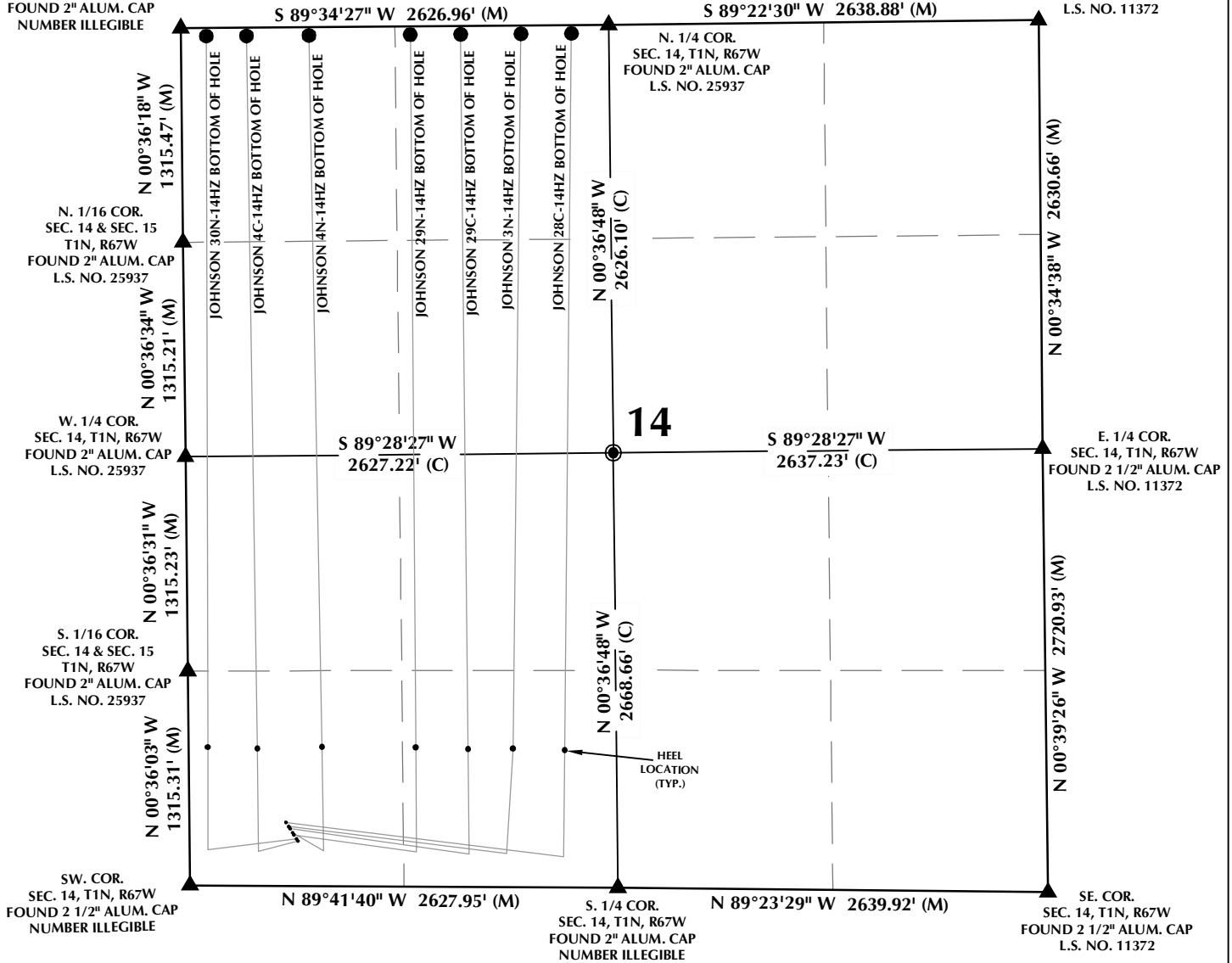


MULTI-WELL PLAN SECTION 14, T1N, R67W

NW COR.
SEC. 14, T1N, R67W
FOUND 2" ALUM. CAP
NUMBER ILLEGIBLE

NE COR.
SEC. 14, T1N, R67W
FOUND 2 1/2" ALUM. CAP
L.S. NO. 11372



WELL NOTES:

JOHNSON 28C-14HZ
SURFACE: 388' FSL, 593' FWL
BOTTOM HOLE: 50' FNL, 2397' FWL

JOHNSON 3N-14HZ
SURFACE: 363' FSL, 609' FWL
BOTTOM HOLE: 50' FNL, 2087' FWL

JOHNSON 29C-14HZ
SURFACE: 351' FSL, 617' FWL
BOTTOM HOLE: 50' FNL, 1717' FWL

JOHNSON 4N-14HZ
SURFACE: 325' FSL, 633' FWL
BOTTOM HOLE: 50' FNL, 785' FWL

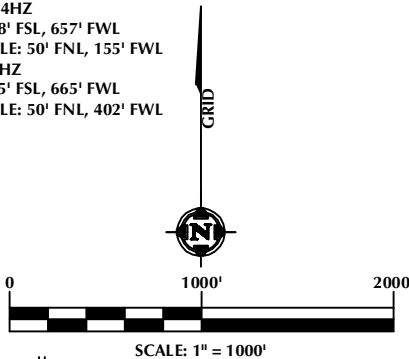
JOHNSON 29N-14HZ
SURFACE: 313' FSL, 641' FWL
BOTTOM HOLE: 50' FNL, 1407' FWL

JOHNSON 30N-14HZ
SURFACE: 288' FSL, 657' FWL
BOTTOM HOLE: 50' FNL, 155' FWL

JOHNSON 4C-14HZ
SURFACE: 275' FSL, 665' FWL
BOTTOM HOLE: 50' FNL, 402' FWL

NOTES:

- ▲ INDICATES SECTION CORNER
- INDICATES CALCULATED CORNER
- BASIS OF BEARING DERIVED FROM COLORADO COORDINATE SYSTEM OF 1983 NORTH ZONE.
- ALL MEASURED DISTANCES ARE GRID. COMBINED SCALE FACTOR: .99972975
- WELL FOOTAGES ARE MEASURED AT RIGHT ANGLES TO THE SECTION LINES.



WELL PAD - JOHNSON 4N-14HZ

MULTI-WELL PLAN
JOHNSON 28C-14HZ,
JOHNSON 3N-14HZ, JOHNSON 29C-14HZ,
JOHNSON 4N-14HZ, JOHNSON 29N-14HZ,
JOHNSON 30N-14HZ & JOHNSON 4C-14HZ
LOCATED IN SECTION 14
T1N, R67W, 6TH P.M.
WELD COUNTY, COLORADO

**Kerr-McGee Oil &
Gas Onshore L.P.**
1099 18th Street
Denver, Colorado 80202



CONSULTING, LLC

SHERIDAN OFFICE
1095 Saberton Avenue
Sheridan, Wyoming 82801
Phone 307-674-0609

LOVELAND OFFICE
1635 Foxtrail Drive, Suite 204
Loveland, Colorado 80538
Phone 970-776-4331

DRAFTED BY:	LMO	CHECKED BY:	JRS
DATE DRAFTED:	2/4/16	DATE SURVEYED:	11/19/15
REVISED:		FILE NAME:	14-129