

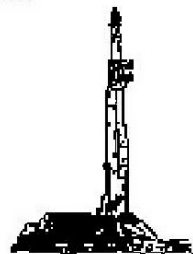
GOOLSBY BROTHERS
and associates, inc.

575 Union Blvd, Suite 208
Lakewood, CO 80228
303-945-2860 Office



Geological Wellsite
Supervision

www.goolsbybrothers.com



Scale 1:240 (5"=100') Imperial
Measured Depth Log

Well Name: SRC VISTA 44-2C

Well Id: 123

Location: Section 2, T4N, R68W, Weld County, CO.

License Number: API: 05-123-41063

Spud Date: NOV 18, 2015

Surface Coordinates: NWSW 2063 FSL 254 FWL

Region: Wattenberg

Drilling Completed: NOV 24, 2015

Bottom Hole Coordinates: SESE 755 FSL 460 FEL

Ground Elevation (ft): 5000'

Logged Interval (ft): 6000

Formation: CODELL

Type of Drilling Fluid: LSND

To: 11854'

K.B. Elevation (ft): 5013'

Total Depth (ft): 11854' DTD

Printed by HORIZONTAL.LOG from WellSight Systems 1-800-447-1534 www.WellSight.com

OPERATOR

Company: Synergy Resources Corporation

Address: 20203 Highway 60
Platteville, CO 80651

GEOLOGIST

Name: Tekabe Gedamu

Company: Goolsby Brothers & Assoc. (GBA), Inc. (www.goolsbybrothers.com)

Address: 575 Union Blvd.
Suite 208,
Lakewood CO. 80228

E-logs

MWD GR from 6000'-11750'

Casing

9 5/8" Surface Casing set @ 651' MD

7" Intermediate Casing set @ 7650' MD on Nov 21, 2015

4 1/2" Production Liners/Packers run on Nov 25.

Comments

1) Drilling Contractor: Ensign US Drilling, Rig #131

2) Company Man: Sean Devereaux
Kevin Brakovec

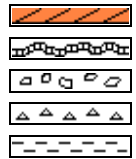
3) Mud Comapny : Halliburton

4) Directional Drilling: Scintific Drilling

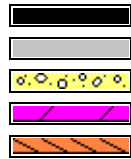
5) Gas Equipment: Pason Gas Analyzer (Spectrometer)

6) Wellsite Geologist: Tekabe Gedamu

ROCK TYPES



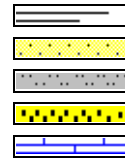
Anhy
Bent
Brec
Cht
Clyst



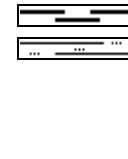
Coal
Oil sat.
Congl
Dol
Gyp



Lmst
Mrlst
Salt
Shale
Shcol



Shgy
Ss
Sltst
Ss
Chalk



Carb sh
Sltly sh

ACCESSORIES

MINERAL

Anhy
 Arggrn
 Arg
 Bent
 Bit
 Brecfrag
 Calc
 Carb
 Chtdk
 Chtlt
 Dol
 Feldspar
 Ferrpel
 Ferr
 Glau

Gyp
 Hvymin
 Kaol
 Marl
 Minxl
 Nodule
 Phos
 Pyr
 Salt
 Sandy
 Silt
 Sil
 Sulphur
 Tuff

FOSSIL

Algae
 Amph
 Belm
 Bioclst
 Brach
 Bryozoa
 Cephal
 Coral
 Crin
 Echin
 Fish
 Foram
 Fossil
 Gastro
 Oolite

Ostra
 Pelec
 Pellet
 Pisolite
 Plant
 Strom

STRINGER

Chlkstg
 Anhy
 Arg
 Bent
 Coal
 Dol
 Gyp
 Ls

Mrst
 Sltstrg
 Ssstrg

TEXTURE

Boundst
 Chalky
 Cryxln
 Earthy
 Finexln
 Grainst
 Lithogr
 Microxln
 Mudst
 Packst
 Wackest

OTHER SYMBOLS

OIL SHOWS

Even
 Spotted
 Ques
 Dead
 Vspotty

near even

POROSITY TYPE

Earthy
 Fenest
 Fracture

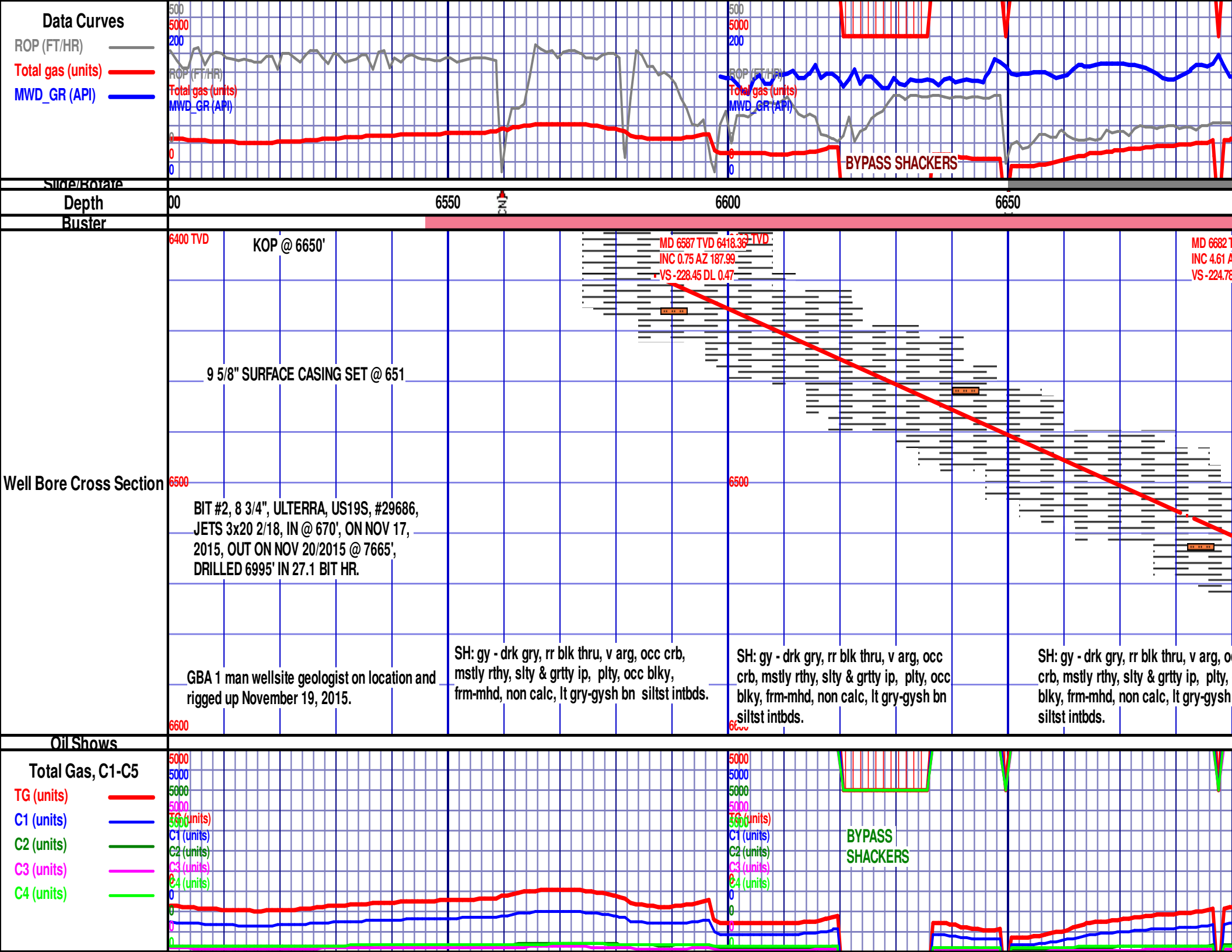
Inter
 Moldic
 Organic
 Pinpoint
 Vuggy

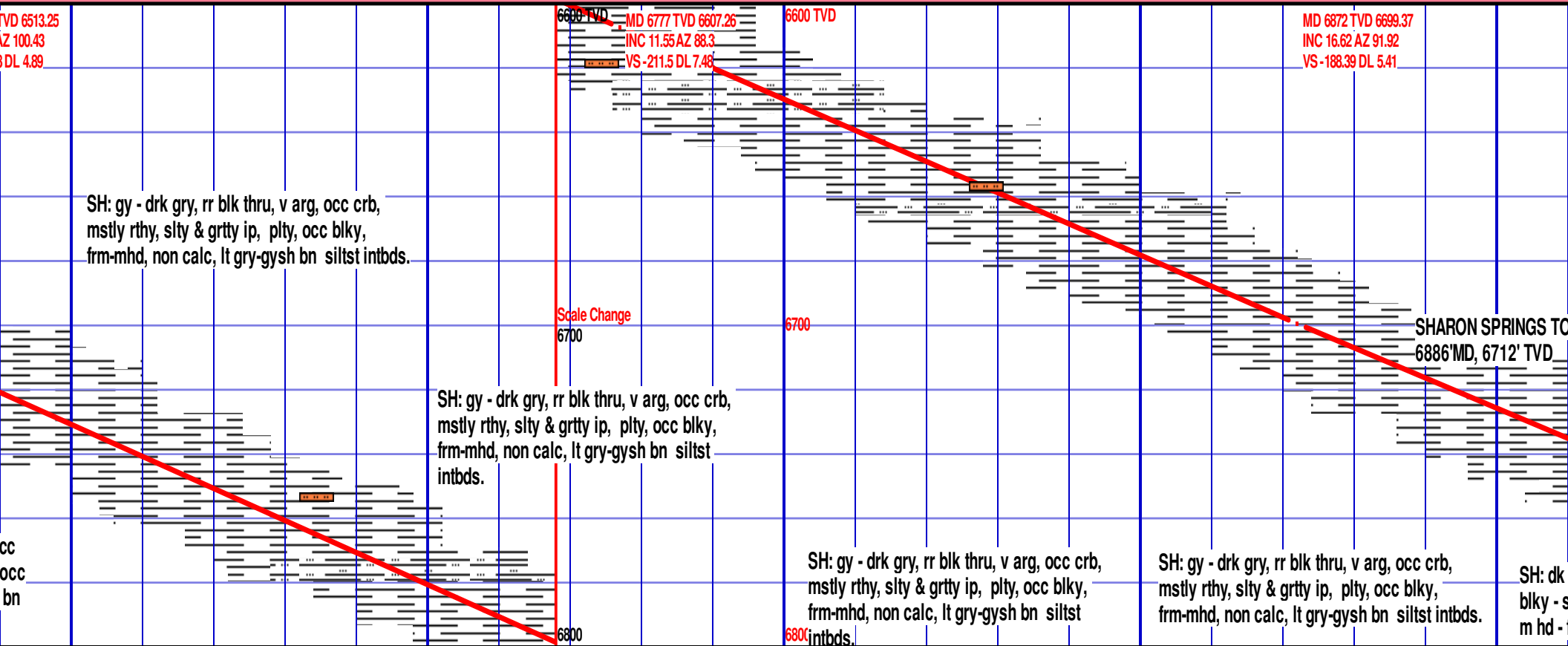
ROUNDING

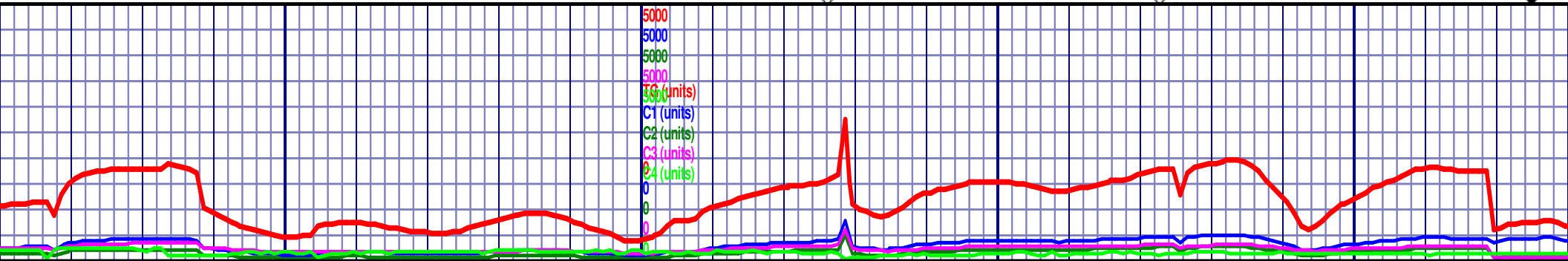
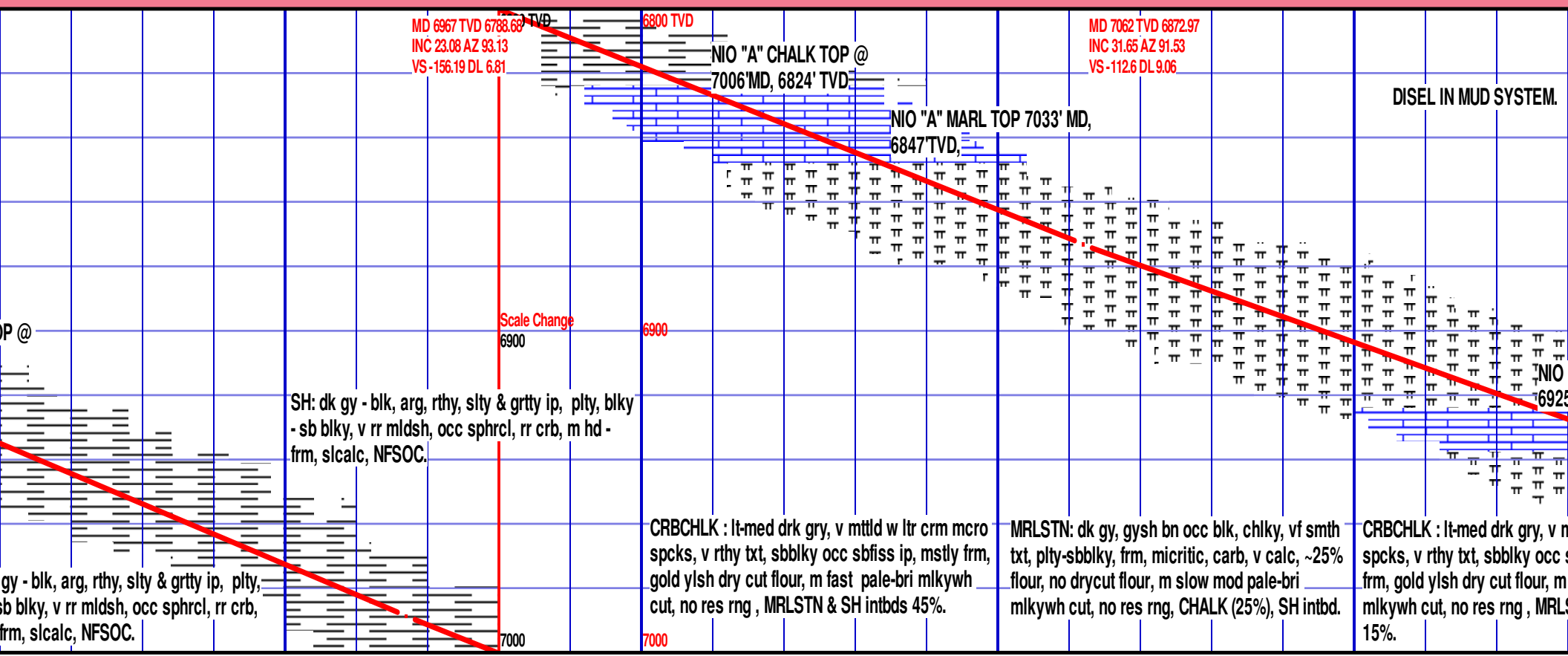
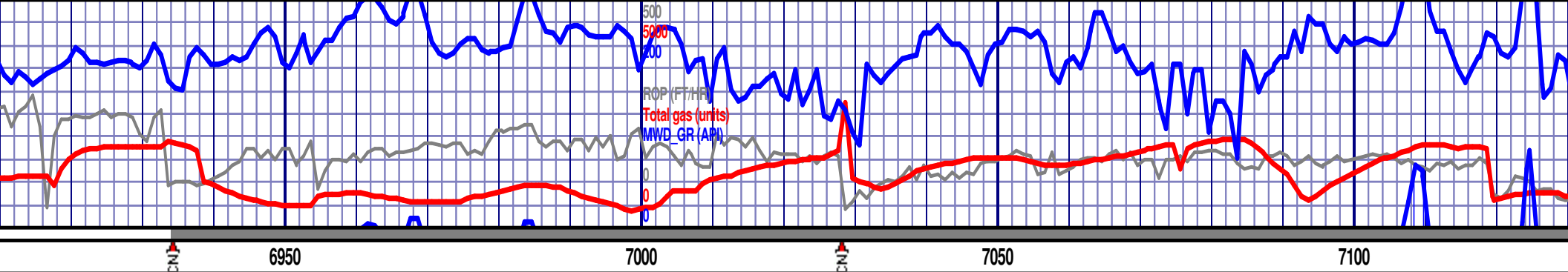
Rounded
 Subrnd
 Subang
 Angular

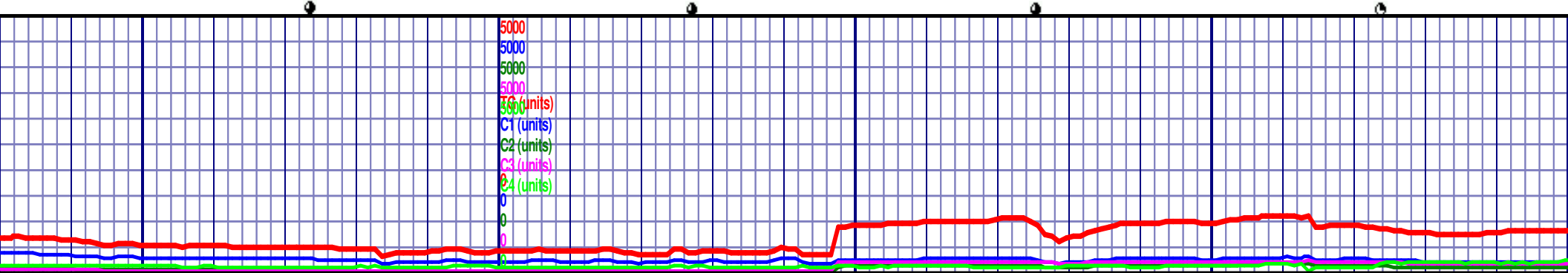
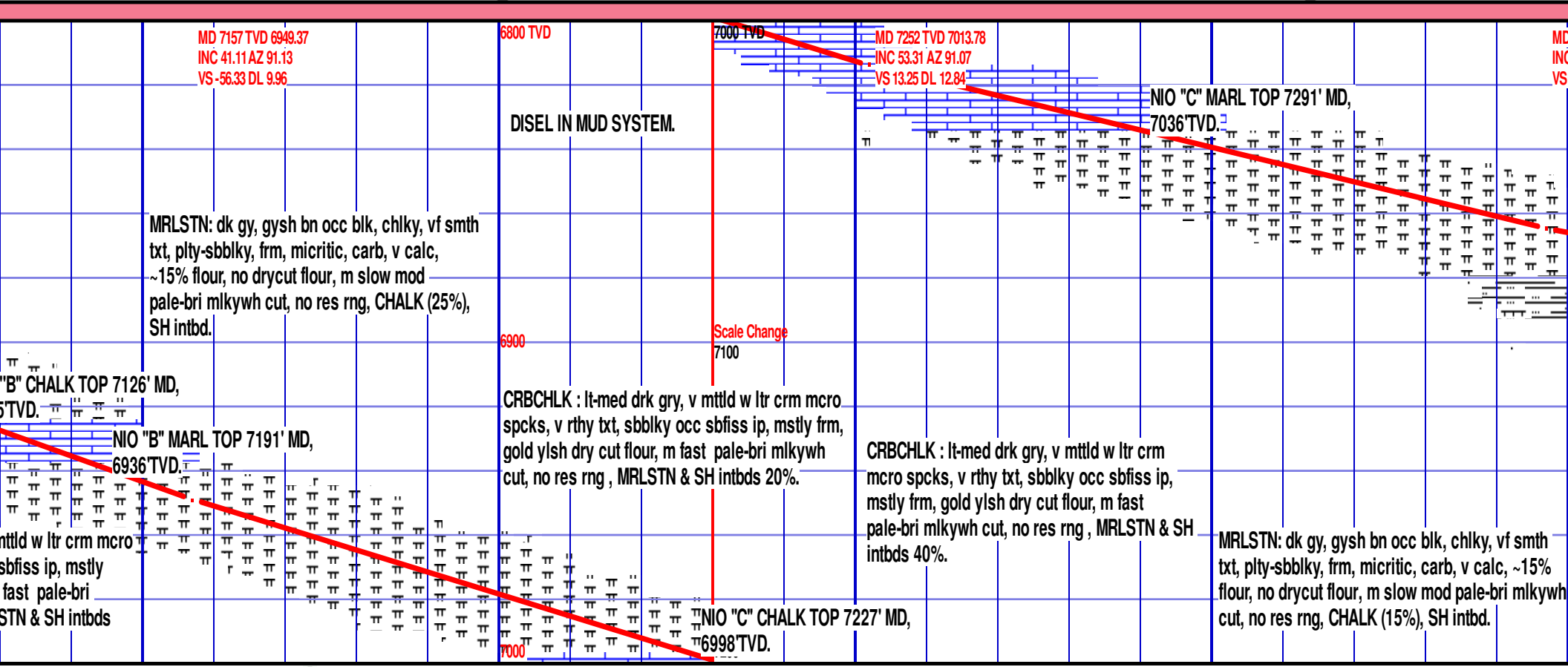
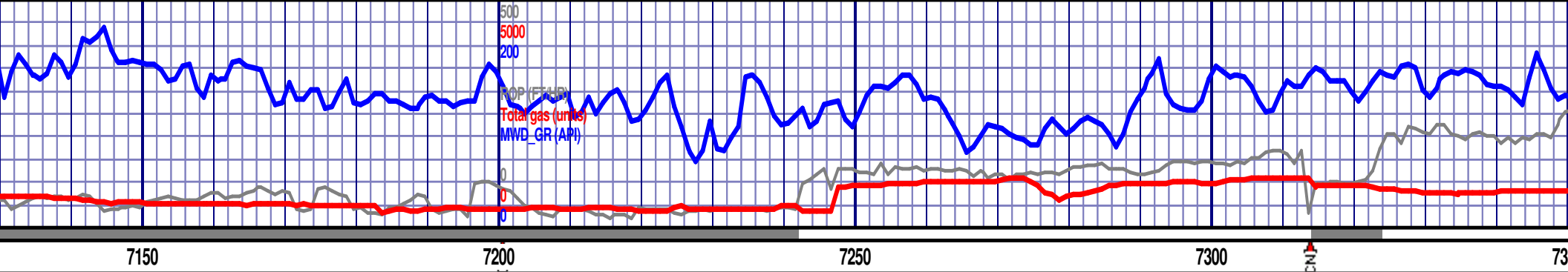
SORTING

Well
 Moderate
 Poor











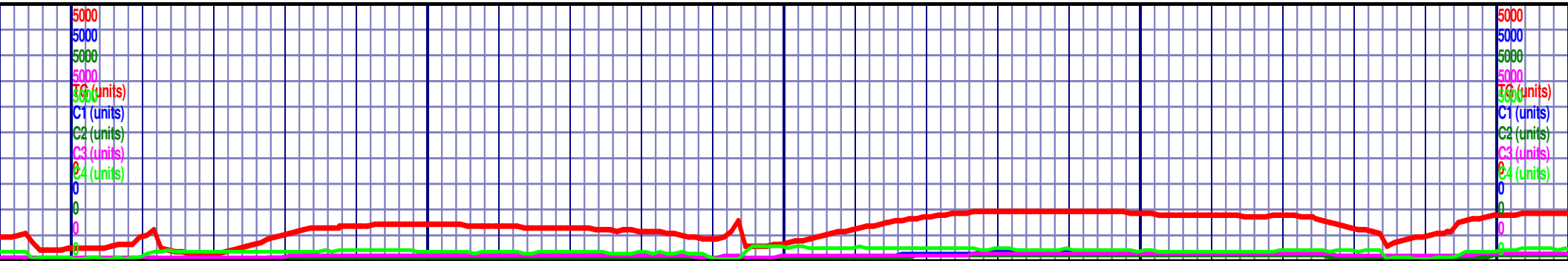
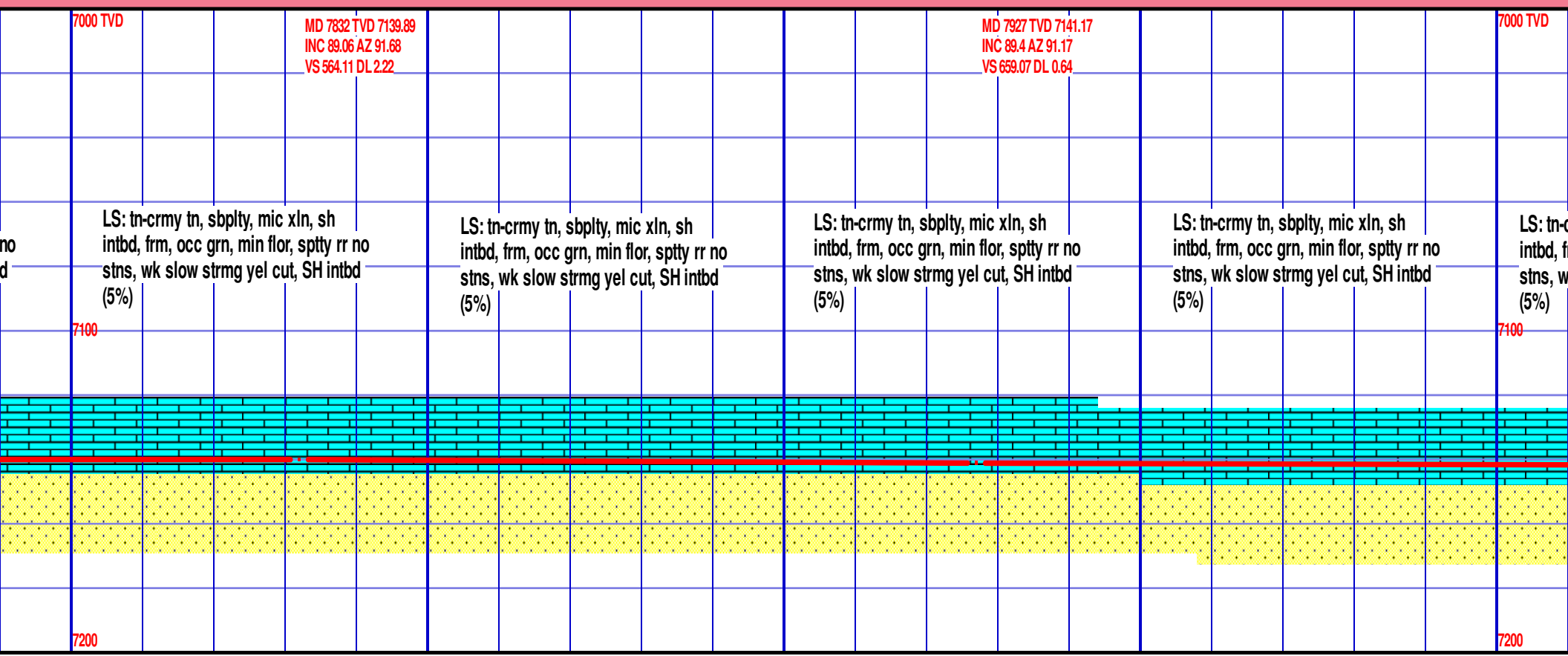
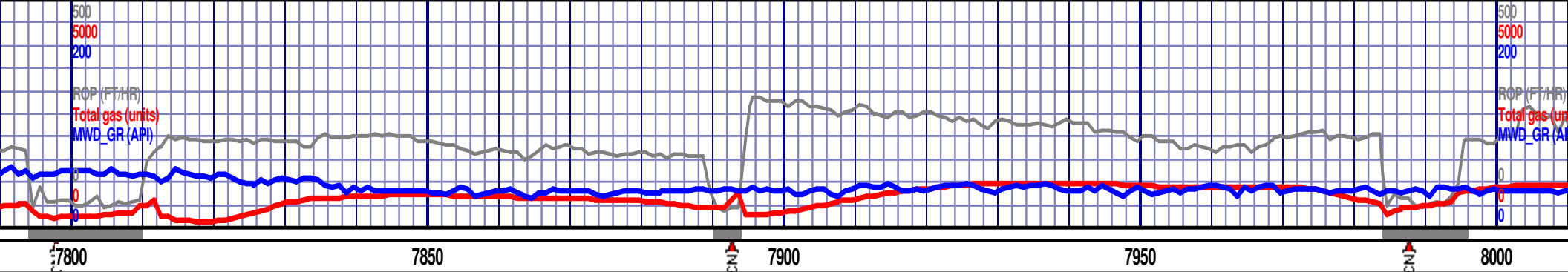
7750

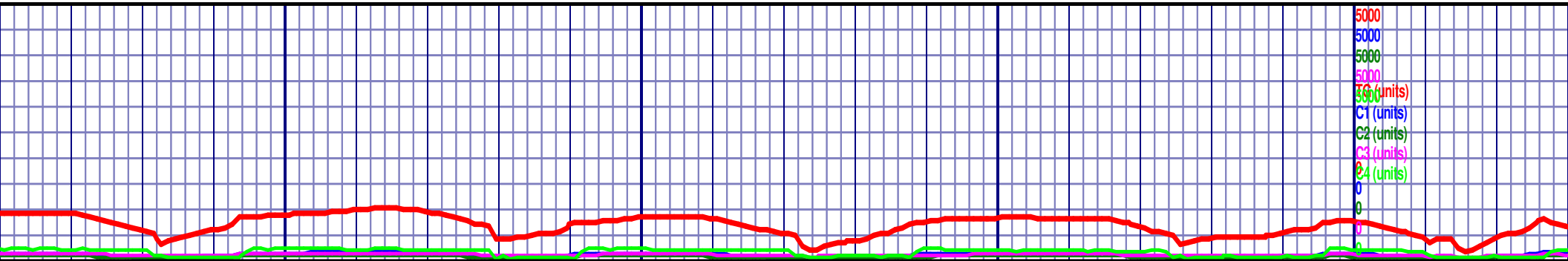
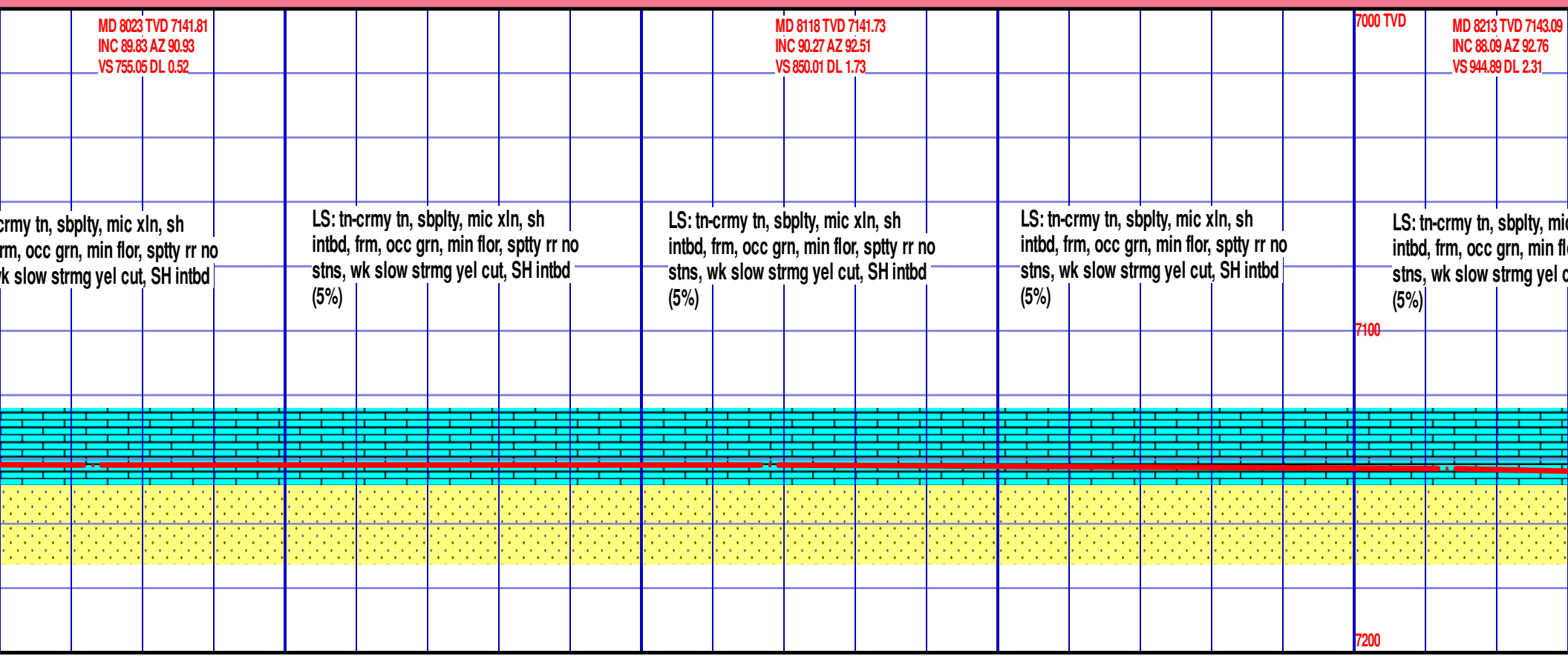
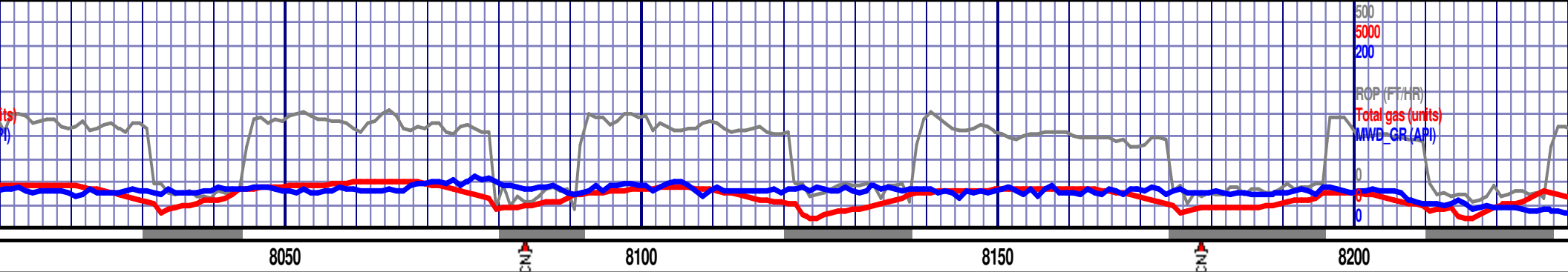
MD 7737 TVD 7139.75
INC 90.77 AZ 92.91
VS 469.19 DL 1.88

LS: tn-crmy tn, sbpity, mic xln, sh
intbd, frm, occ grn, min flor, sptty rr
stns, wk slow strmg yel cut, SH intb
(5%)



LS: tn-crmy tn, sbply, mic xln, sh intbd, frm,
occ grn, min flor, sppty rr no stns, wk slow
strmq vel cut. SH intbd (5%)





8250

8300

8350

8400

84

MD 8307 TVD 7147.52
INC 86.51 AZ 92.23
VS 1038.69 DL 1.77

700 MD 8402 TVD 7152.33
INC 87.68 AZ 91.92
VS 1133.51 DL 1.27

DUE TO HIGH ROP, START
100FT SAMPLE.

cut, SH intbd

LS: tn-crmy tn, sbply, mic xln, sh
intbd, frm, occ grn, min flwr, sply rr no
stns, wk slow strmg yel cut, SH intbd
(5%)

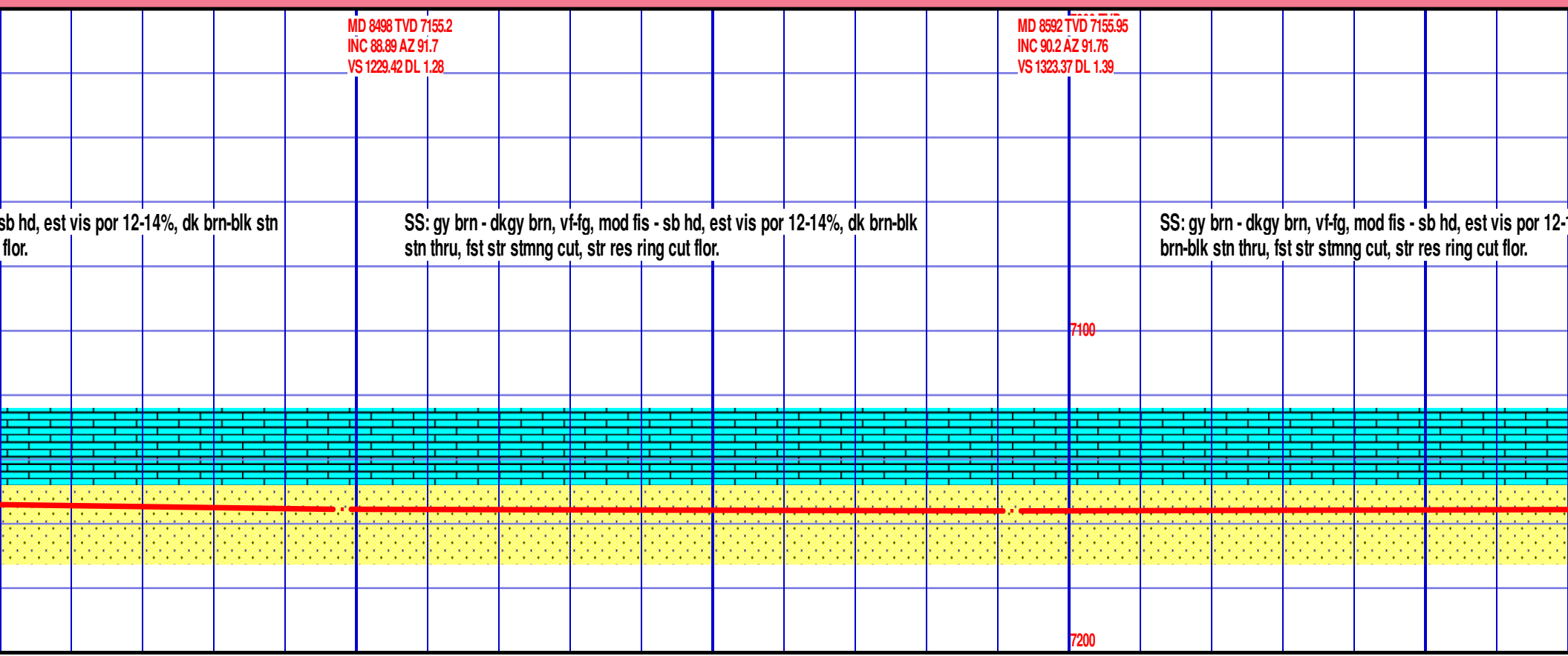
SS: gy brn - dkgy brn, vf-fg, mod fis - sb hd, est vis por 12-14%, dk brn-blk stn thru, fst str strng cut, fr res ring cut flor.

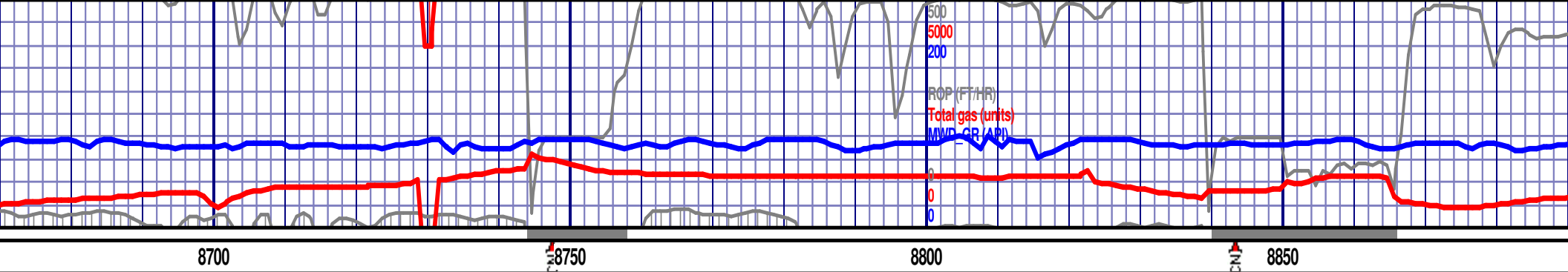
SS: gy brn - dkgy brn, vf-fg, mod fis - s
thru, fst str stmng cut, str res ring cut

CODELL TOP @
8285 MD, 7146 TVD

7100

7200





MD 8687 TVD 7155.64
INC 90.17 AZ 91.38
VS 1418.33 DL 0.41

MD 8783 TVD 7155.95
INC 89.46 AZ 90.75
VS 1514.31 DL 0.98

7000 TVD

MD 8877 TVD 7155.95
INC 90.6 AZ 90.51
VS 1608.31 DL 1.2

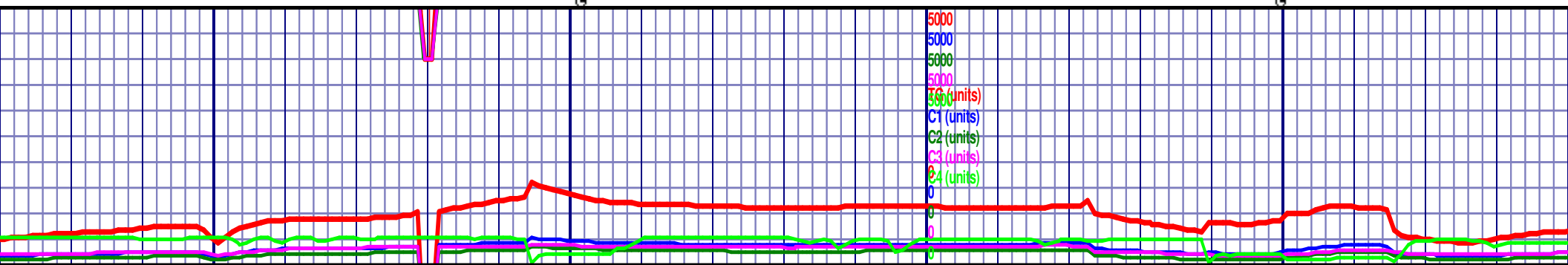
14%, dk

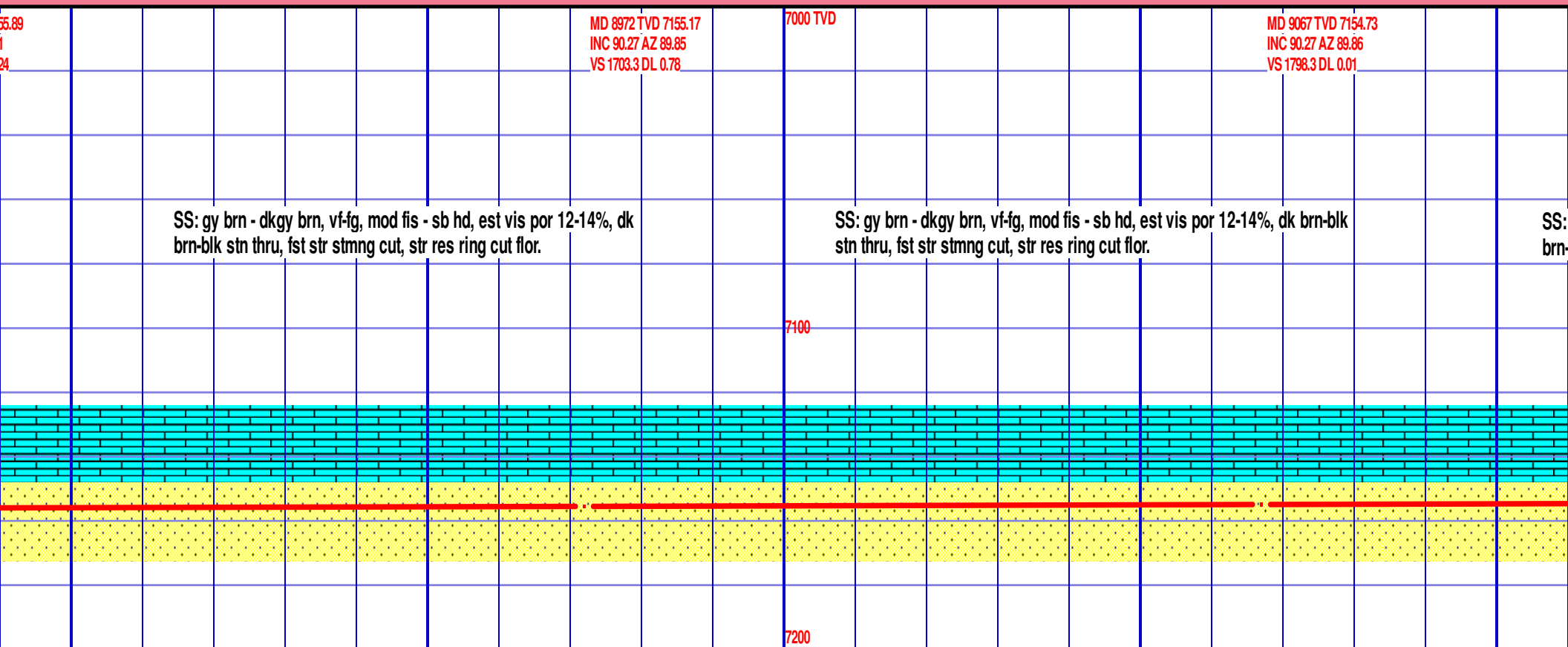
SS: gy brn - dkgy brn, vf-fg, mod fis - sb hd, est vis por 12-14%, dk
brn-blk stn thru, fst str stmng cut, str res ring cut flr.

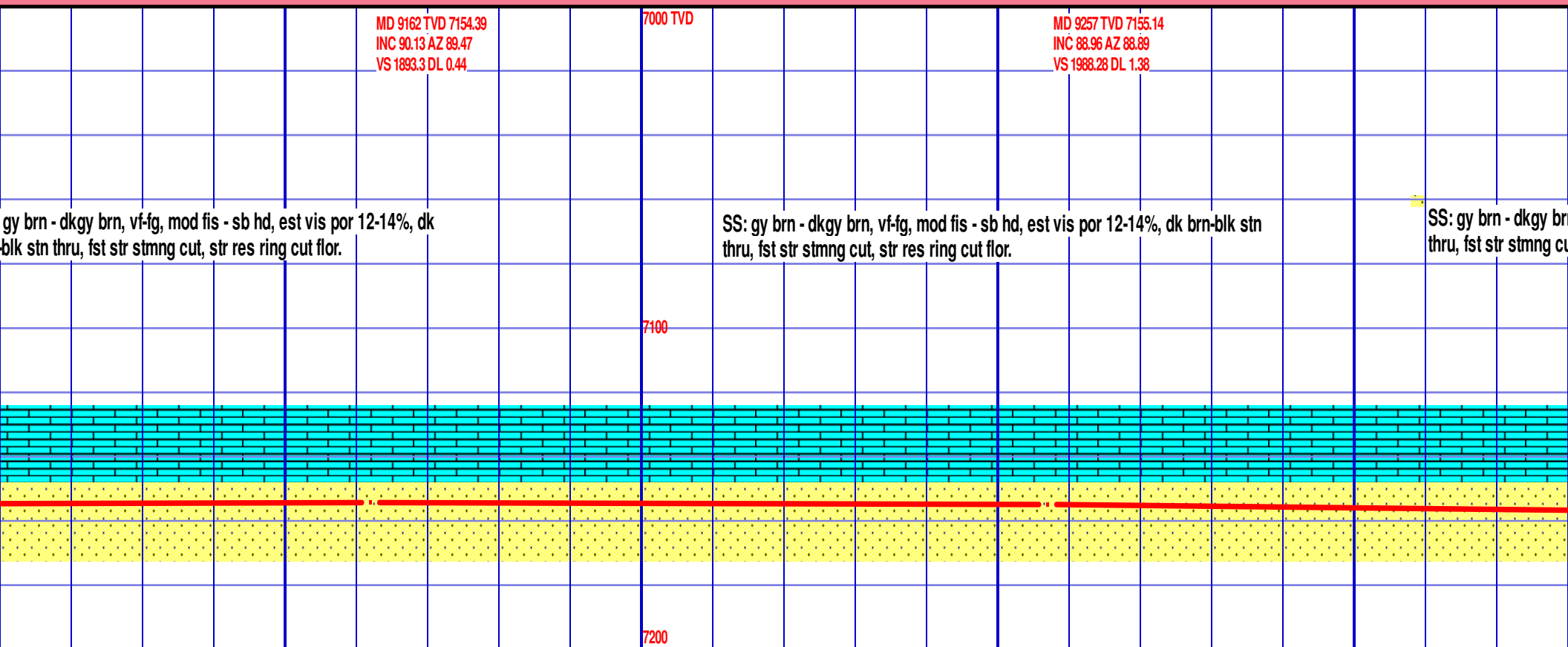
SS: gy brn - dkgy brn, vf-fg, mod fis - sb hd, est vis por 12-14%, dk
brn-blk stn thru, fst str stmng cut, str res ring cut flr.

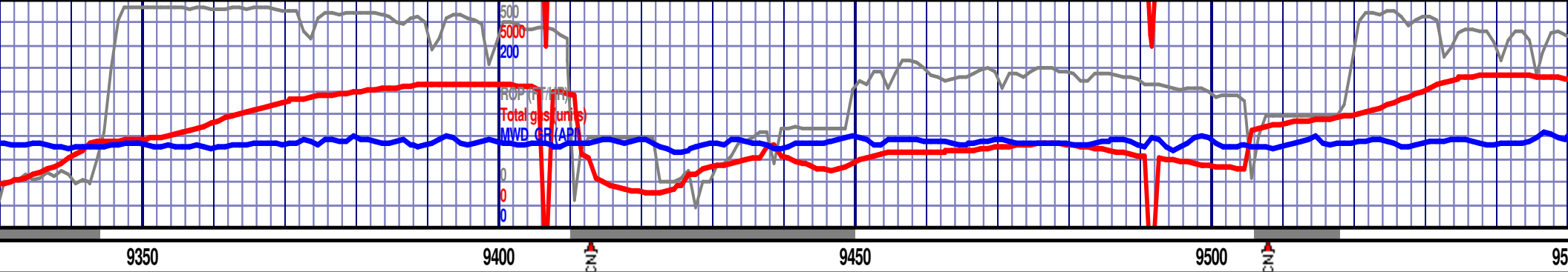
7100

7200









MD 9352 TVD 7156.92
INC 88.89 AZ 88
VS 2083.23 DL 0.94

7000 TVD

MD 9447 TVD 7158.59
INC 89.09 AZ 86.76
VS 2178.12 DL 1.32

MD 9542 TVD 7159.12
INC 88.86 AZ 88
VS 2272.93 DL 1.32

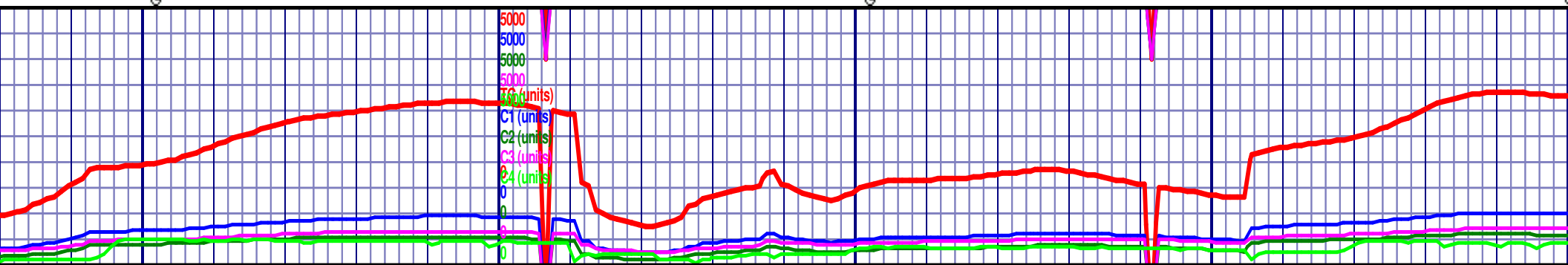
SS: gy brn - dkgy brn, vf-fg, mod fis - sb hd, est vis por 12-14%, dk brn-blk stn thru, str res ring cut flor, LS.

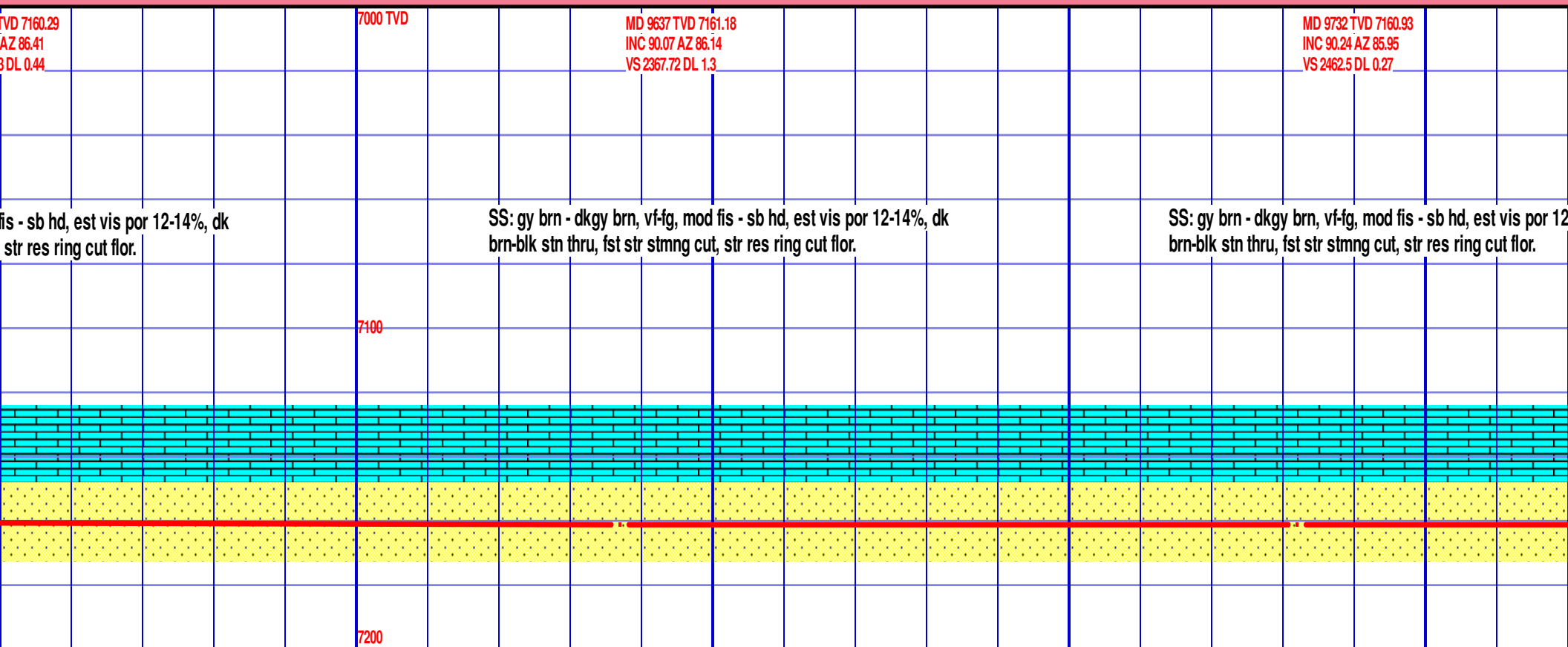
SS: gy brn - dkgy brn, vf-fg, mod fis - sb hd, est vis por 12-14%, dk brn-blk stn thru, fst str stmng cut, str res ring cut flor.

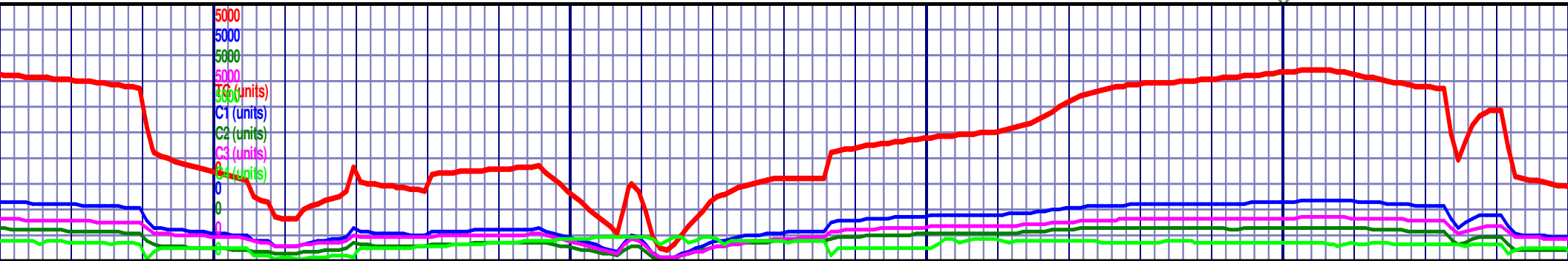
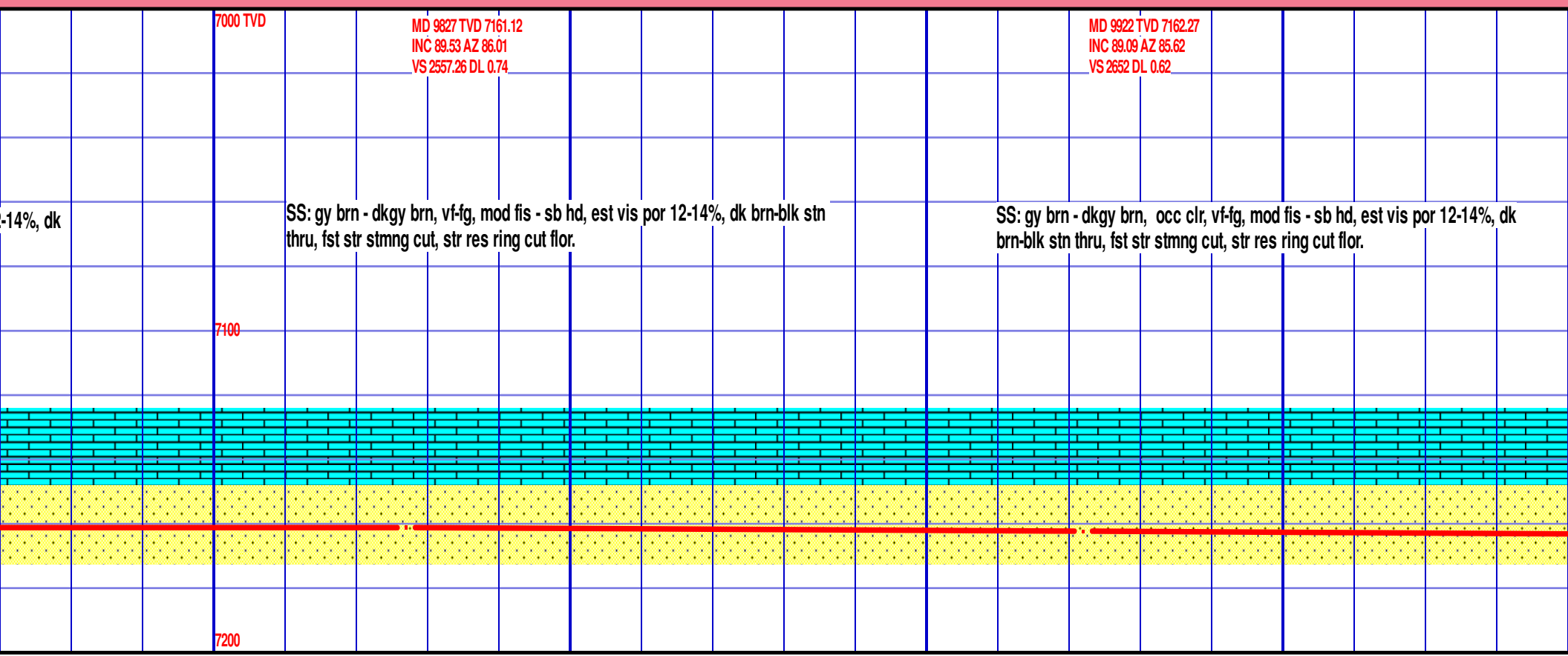
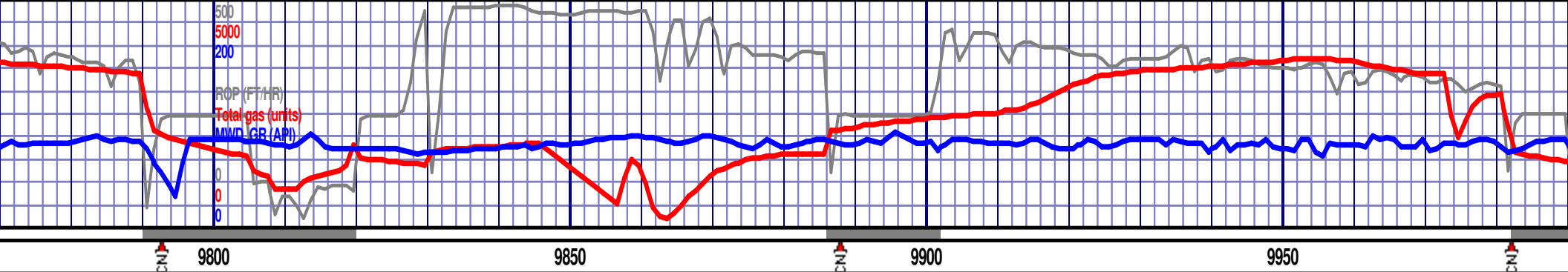
SS: gy brn - dkgy brn, vf-fg, mod fis - sb hd, est vis por 12-14%, dk brn-blk stn thru, fst str stmng cut, str res ring cut flor.

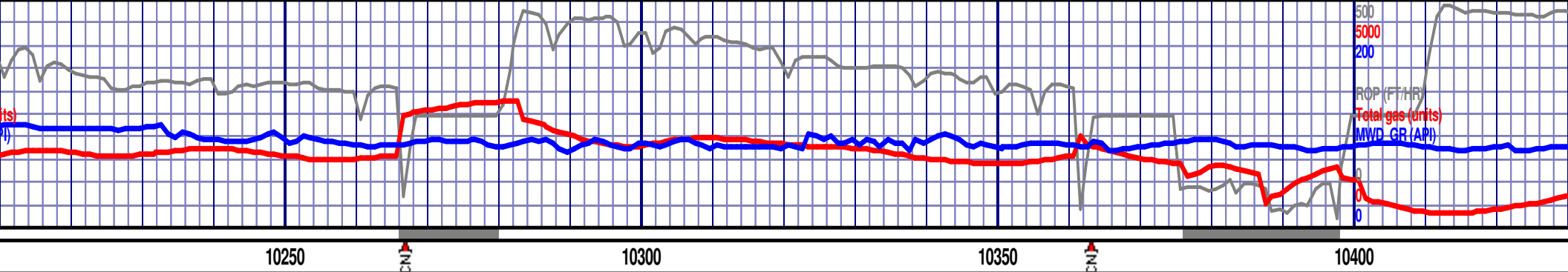
7100

7200









MD 10207 TVD 7163.46
INC 90.81 AZ 88.53
VS 2936.72 DL 0.94

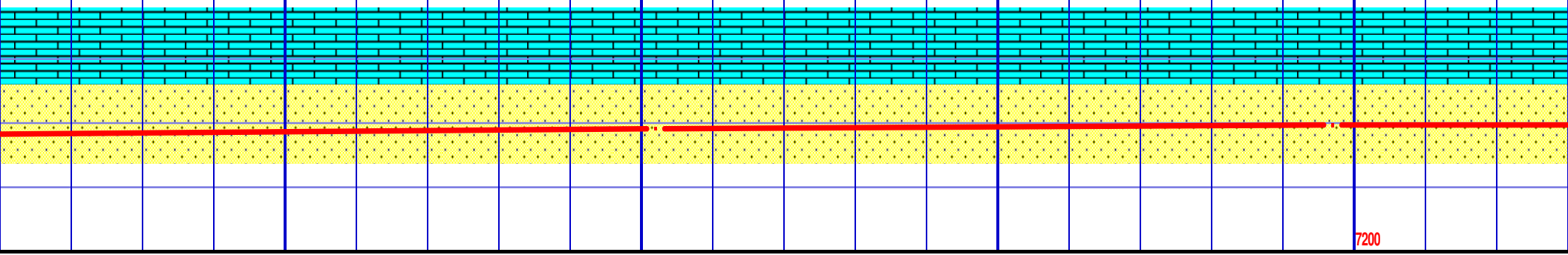
MD 10302 TVD 7161.71
INC 91.31 AZ 88.7
VS 3031.67 DL 0.56

MD 10397 TVD 7160.57
INC 90.07 AZ 88.03
VS 3126.62 DL 1.49

SS: gy brn - dkgy brn, occ clr, vf-fg, mod fis - sb hd, est vis por 12-14%, dk brn-blk stn thru, fst str stmng cut, str res ring cut flor.

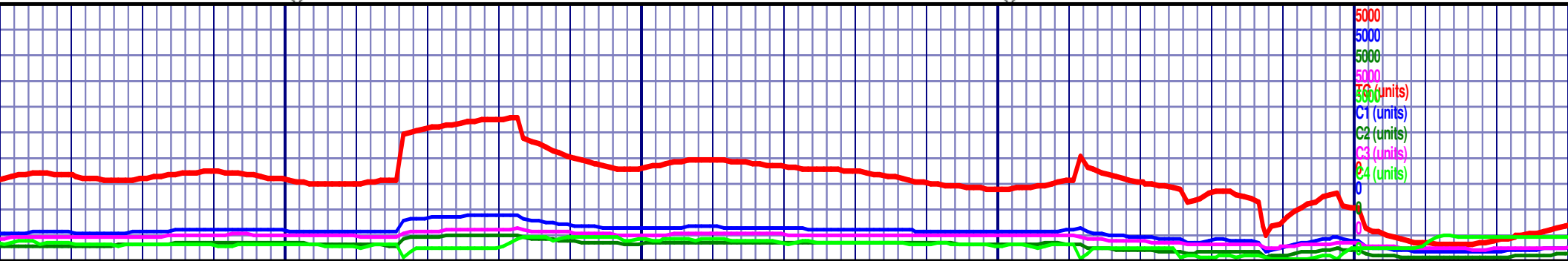
SS: gy brn - dkgy brn, occ clr, vf-fg, mod fis - sb hd, est vis por 12-14%, dk brn-blk stn thru, fst str stmng cut, str res ring cut flor.

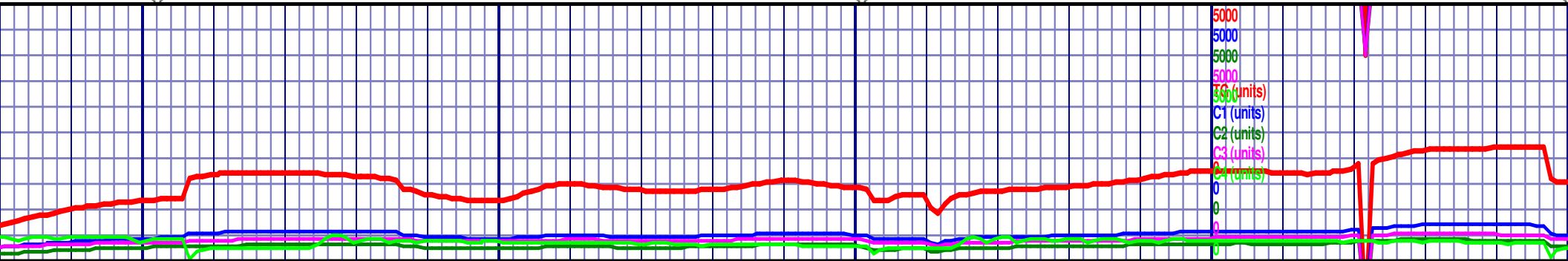
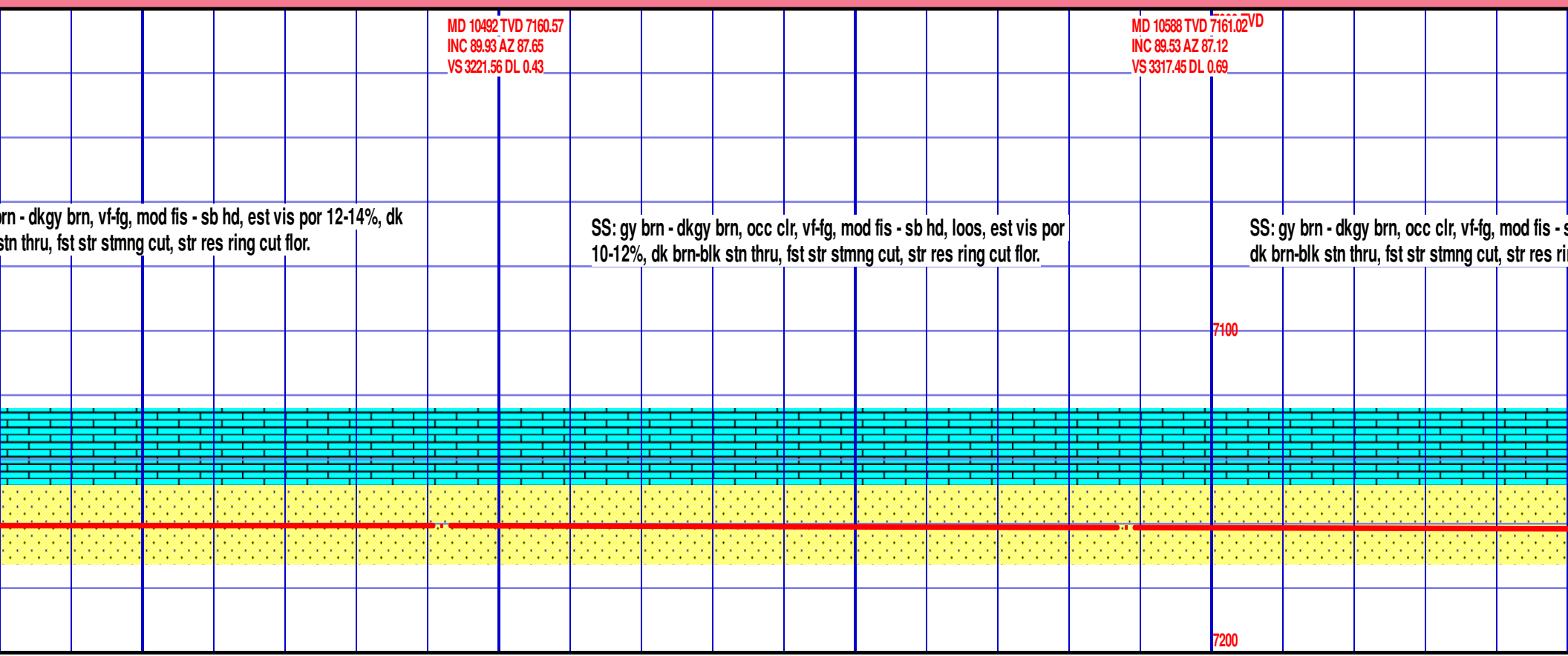
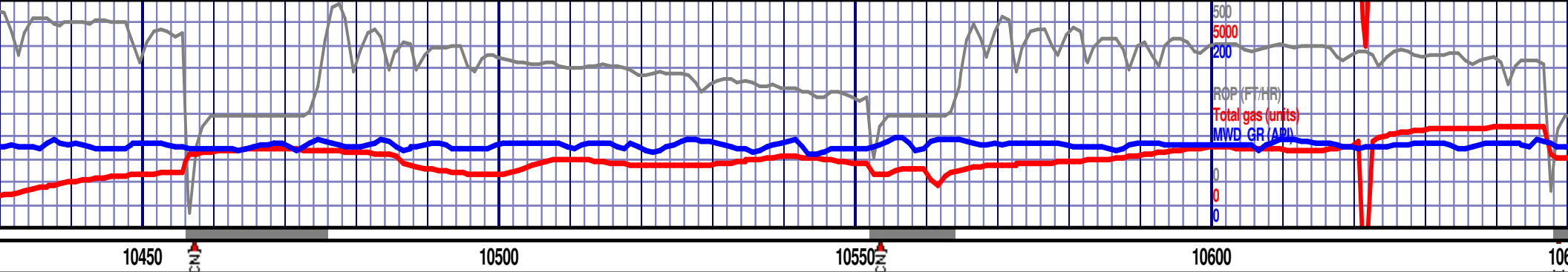
SS: gy b
brn-blk s

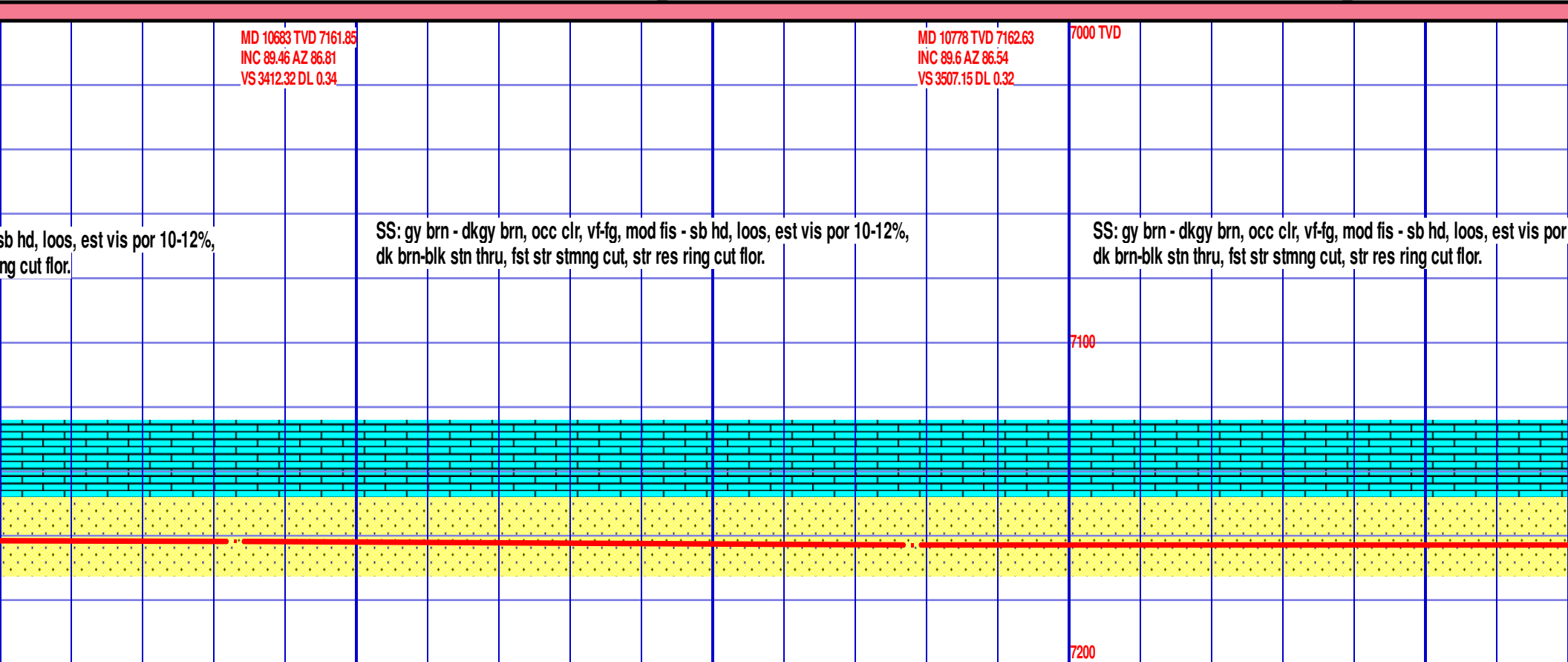


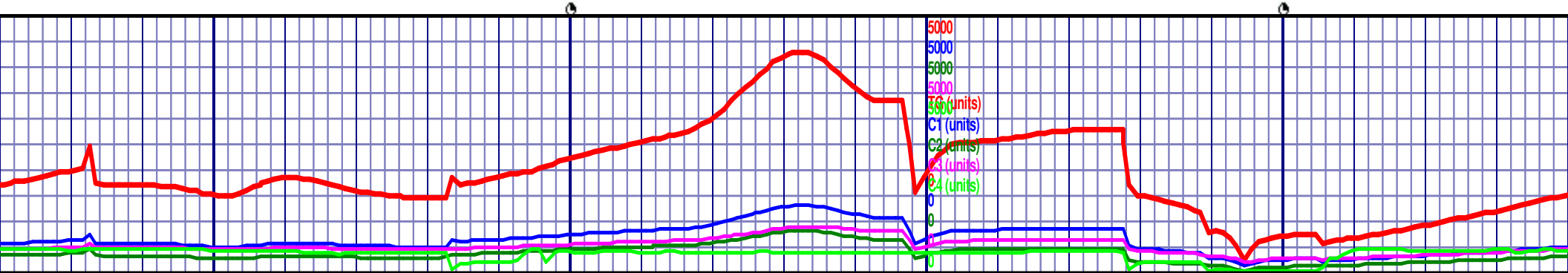
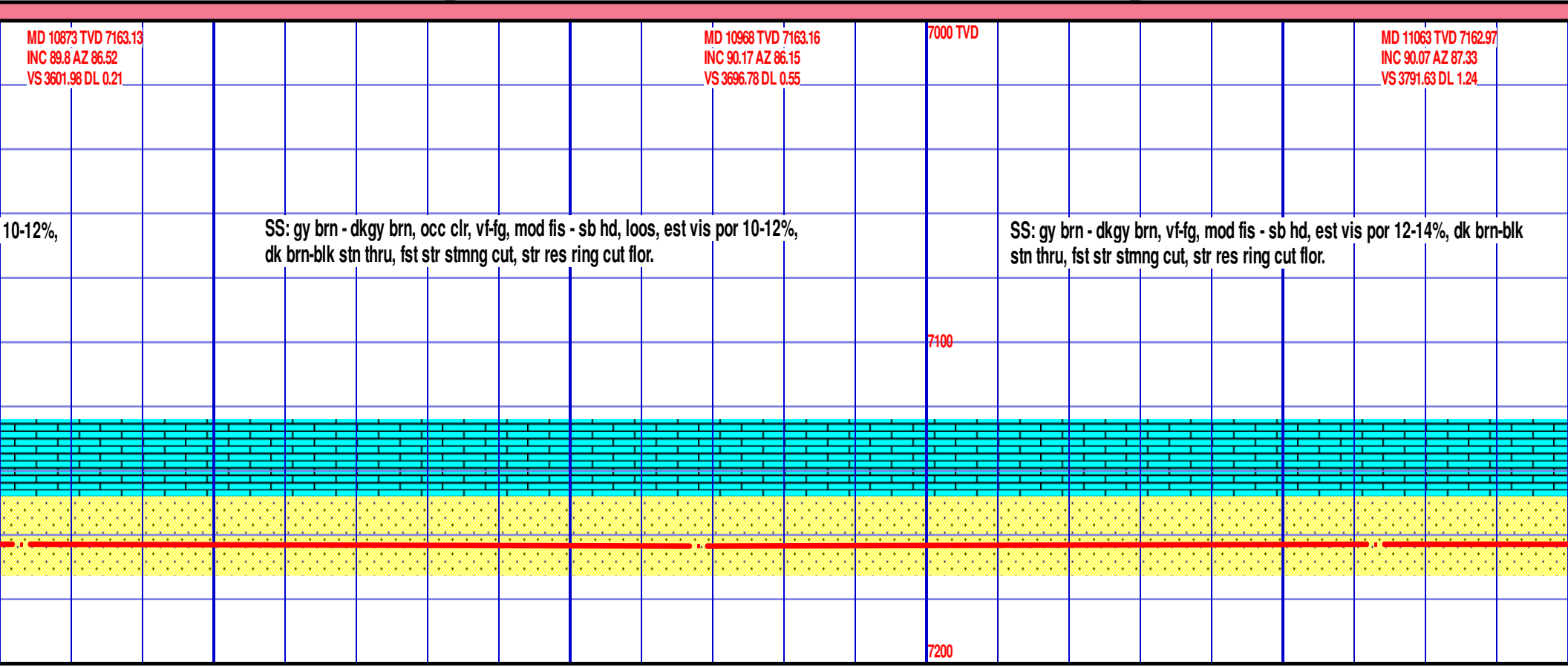
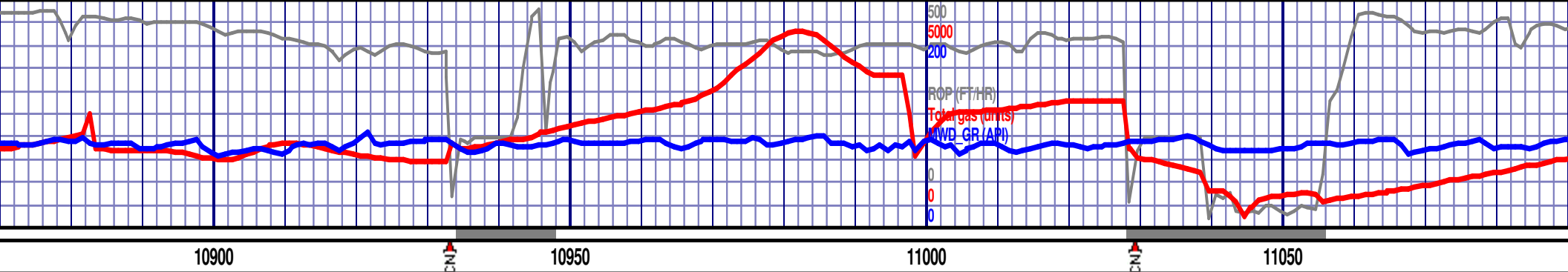
7100

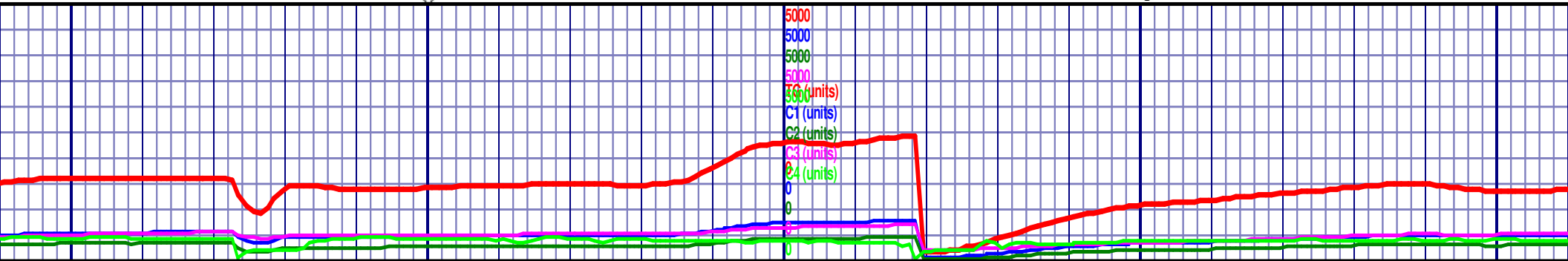
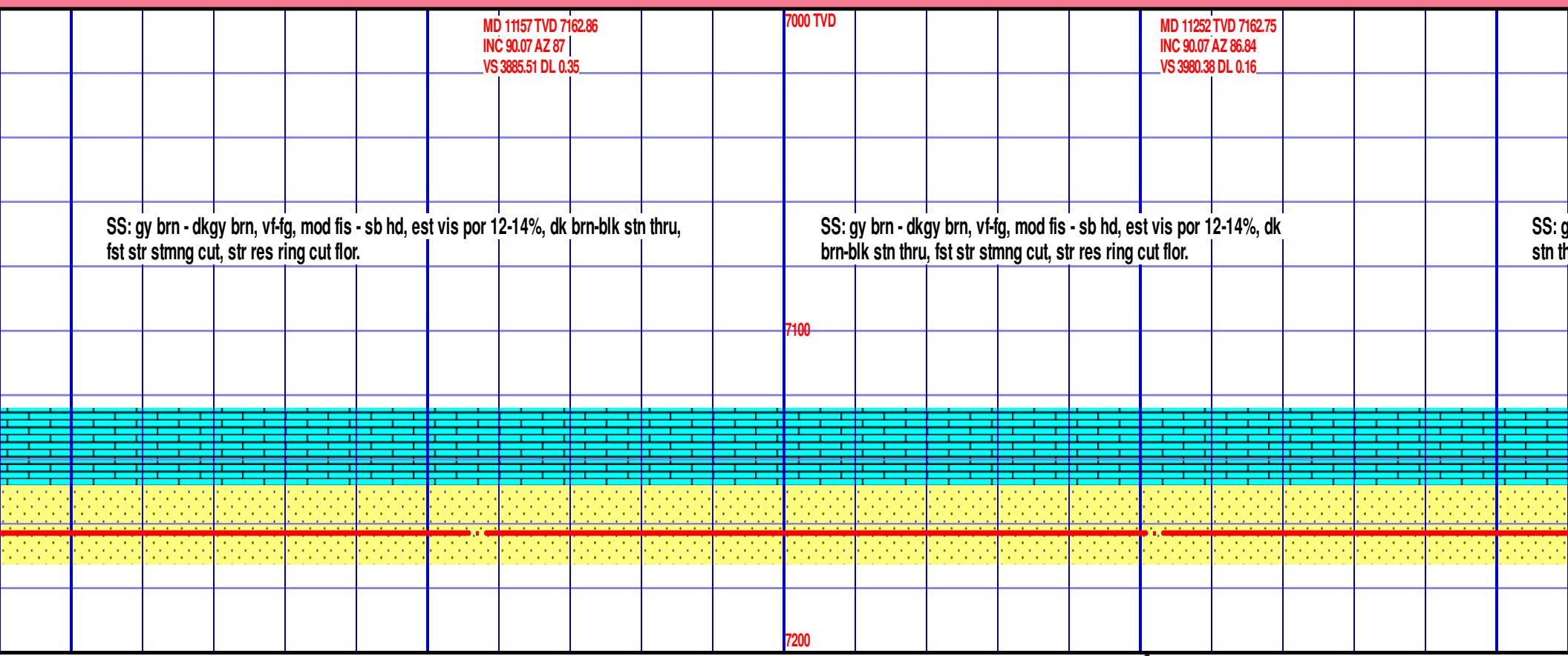
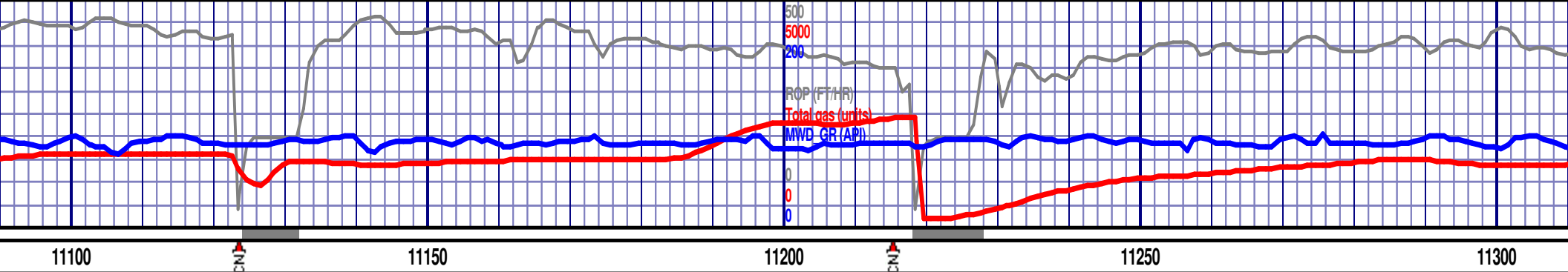
7200

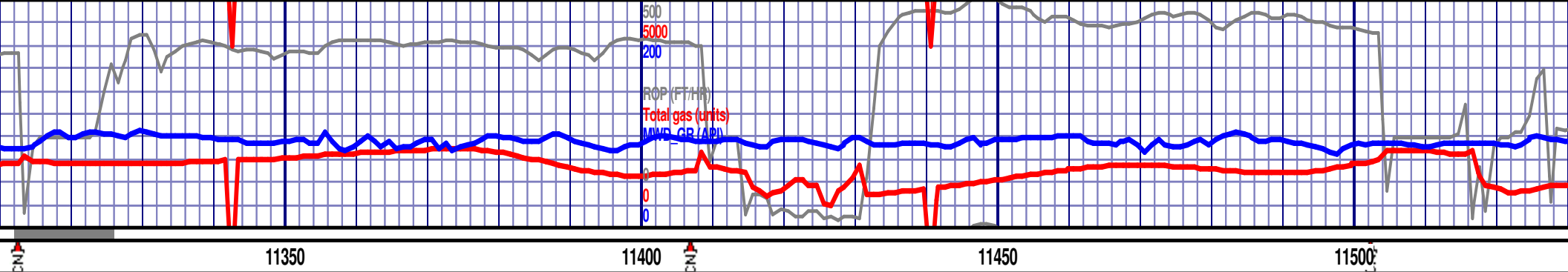












MD 11347 TVD 7162.94
INC 89.7 AZ 85.95
VS 4075.19 DL 1.02

7000 TVD

MD 11442 TVD 7163.02
INC 90.2 AZ 86.48
VS 4169.98 DL 0.77

gy brn - dkgy brn, vf-fg, mod fis - sb hd, est vis por 12-14%, dk brn-blk
ru, fst str stmng cut, str res ring cut flor.

SS: gy brn - dkgy brn, occ clr, lfg-vfg, mod fis - sb hd, loos, est vis por 10-12%, dk
brn-blk stn thru, fst str stmng cut, str res ring cut flor.

SS: gy brn - dkgy
brn-blk stn thru, fs

7100

7200

