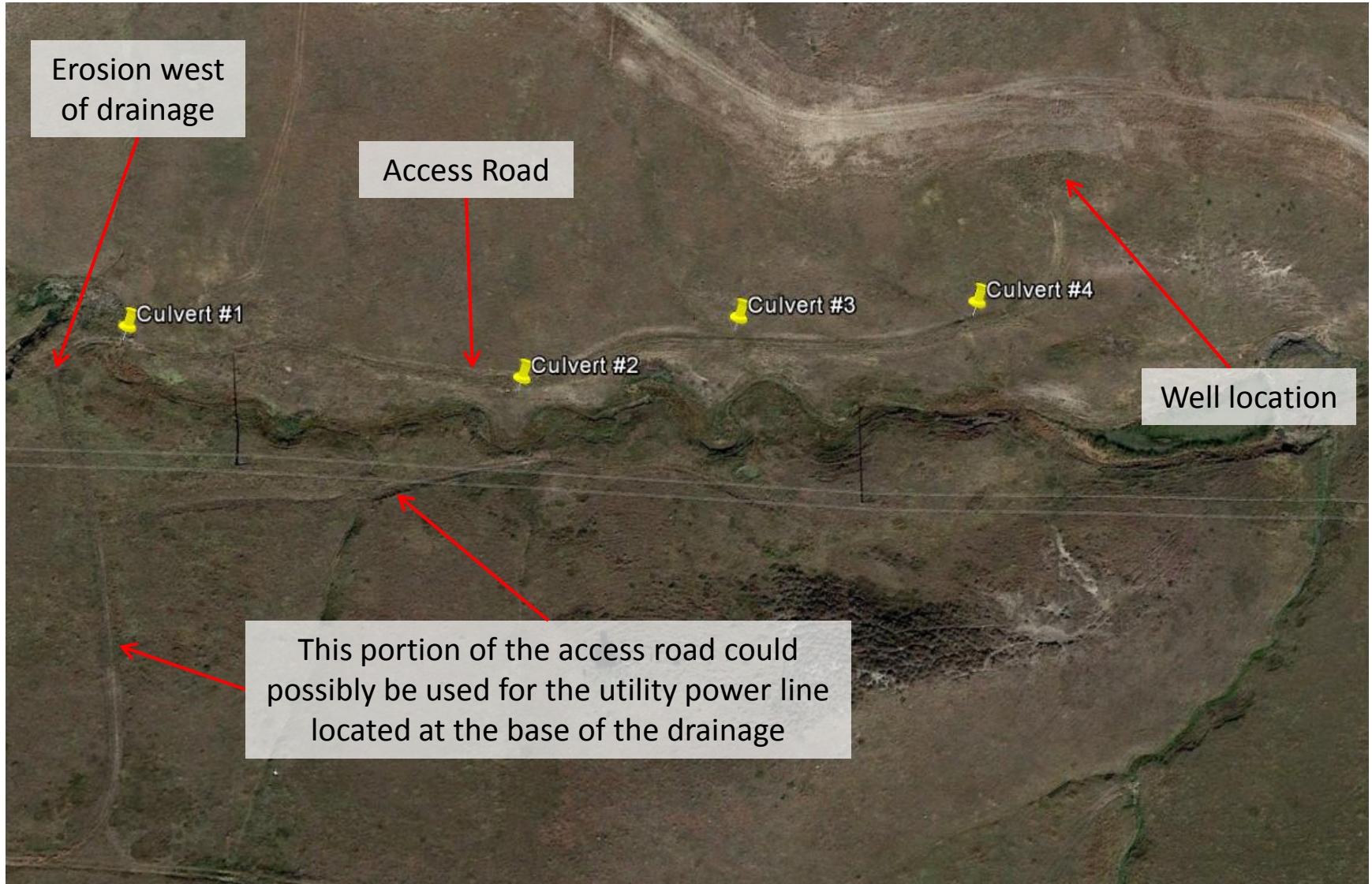


Final Reclamation Inspection Overview: 059-06018



Google Earth aerial imagery taken 10/9/2015 illustrating area of interest. The access road, starting to the west of Culvert #1 to the well location, has not been re-contoured. Erosion needs to be controlled around the drainage by Culvert #1. Culverts need to be removed and access road re-contoured per Rule 1004. A Colorado List B noxious weed was observed along the access road and at the well location. Refer to the following photos from the 9/8/2016 inspection.

Final Reclamation Inspection



Photo 1. Photo taken of well sign at approximate center of well location.

Final Reclamation Inspection

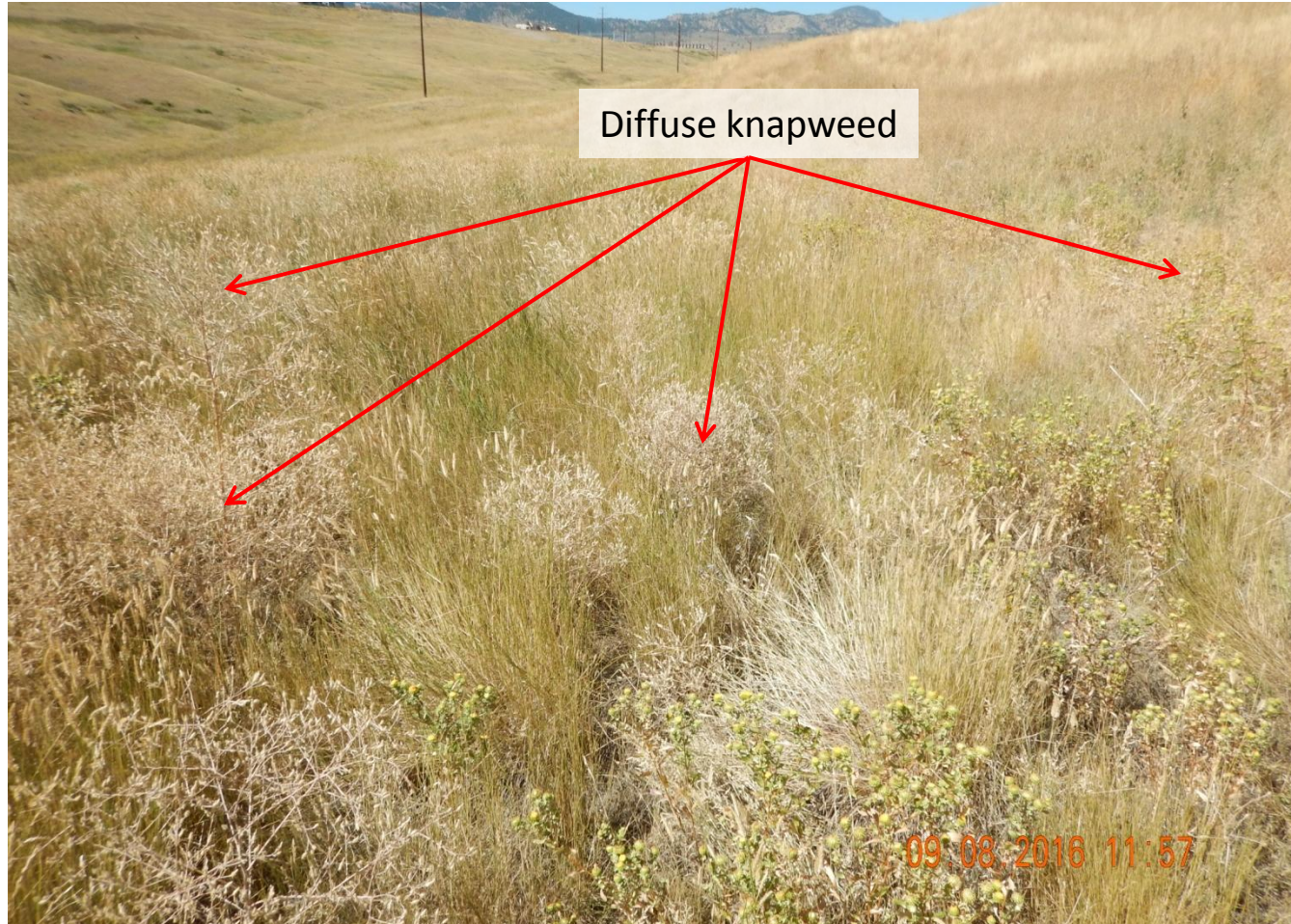


Photo 2. Photo taken from approximate center of location, facing West. Perennial vegetation has established at location but the location is inundated with a Colorado List B noxious weed, Diffuse knapweed (*Centaurea diffusa*).

Final Reclamation Inspection



Photo 3. Photo taken from approximate center of location, facing North. Perennial vegetation has established at location but the location is inundated with a Colorado List B noxious weed, Diffuse knapweed (*Centaurea diffusa*).

Final Reclamation Inspection

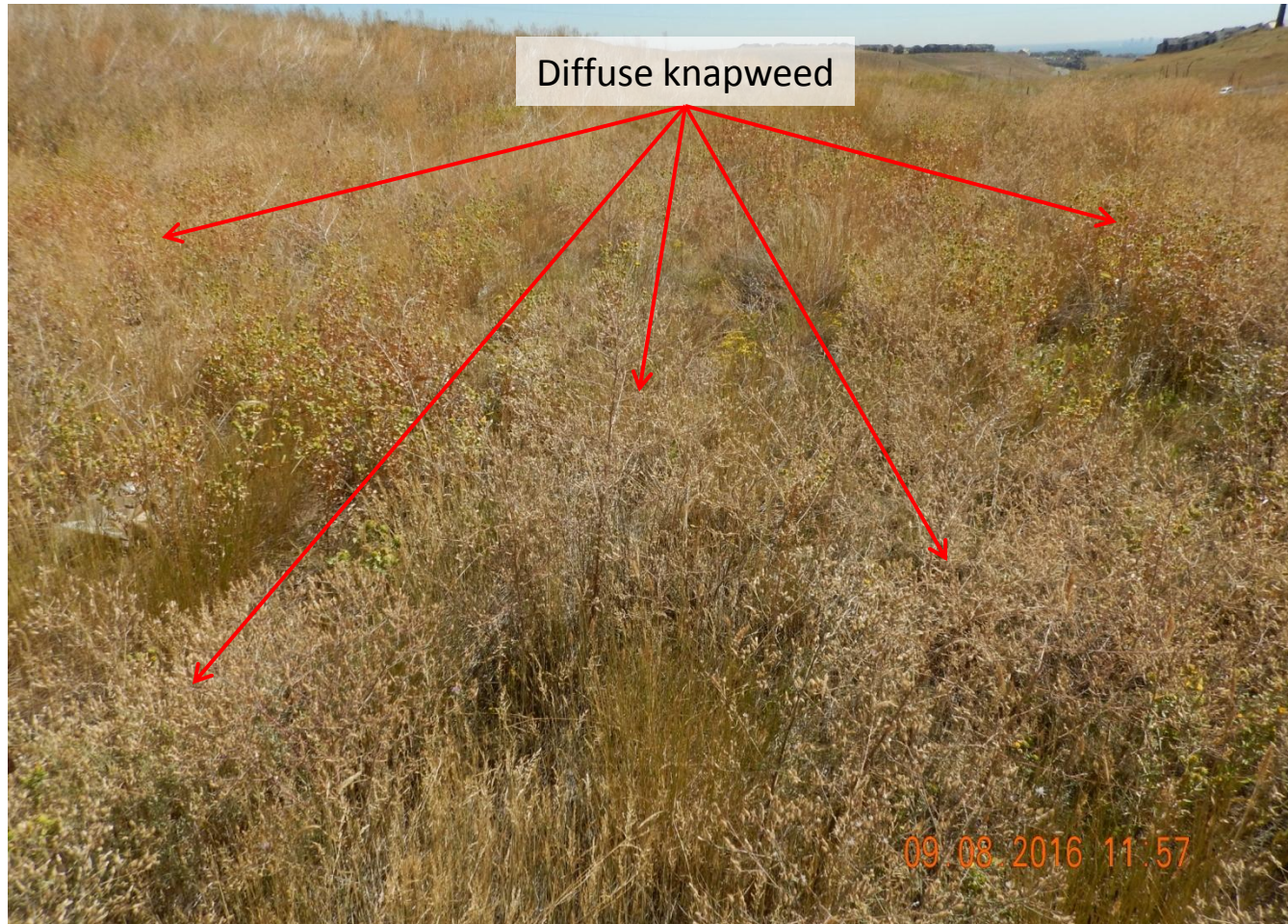


Photo 4. Photo taken from approximate center of location, facing East. Perennial vegetation has established at location but the location is inundated with a Colorado List B noxious weed, Diffuse knapweed (*Centaurea diffusa*).

Final Reclamation Inspection

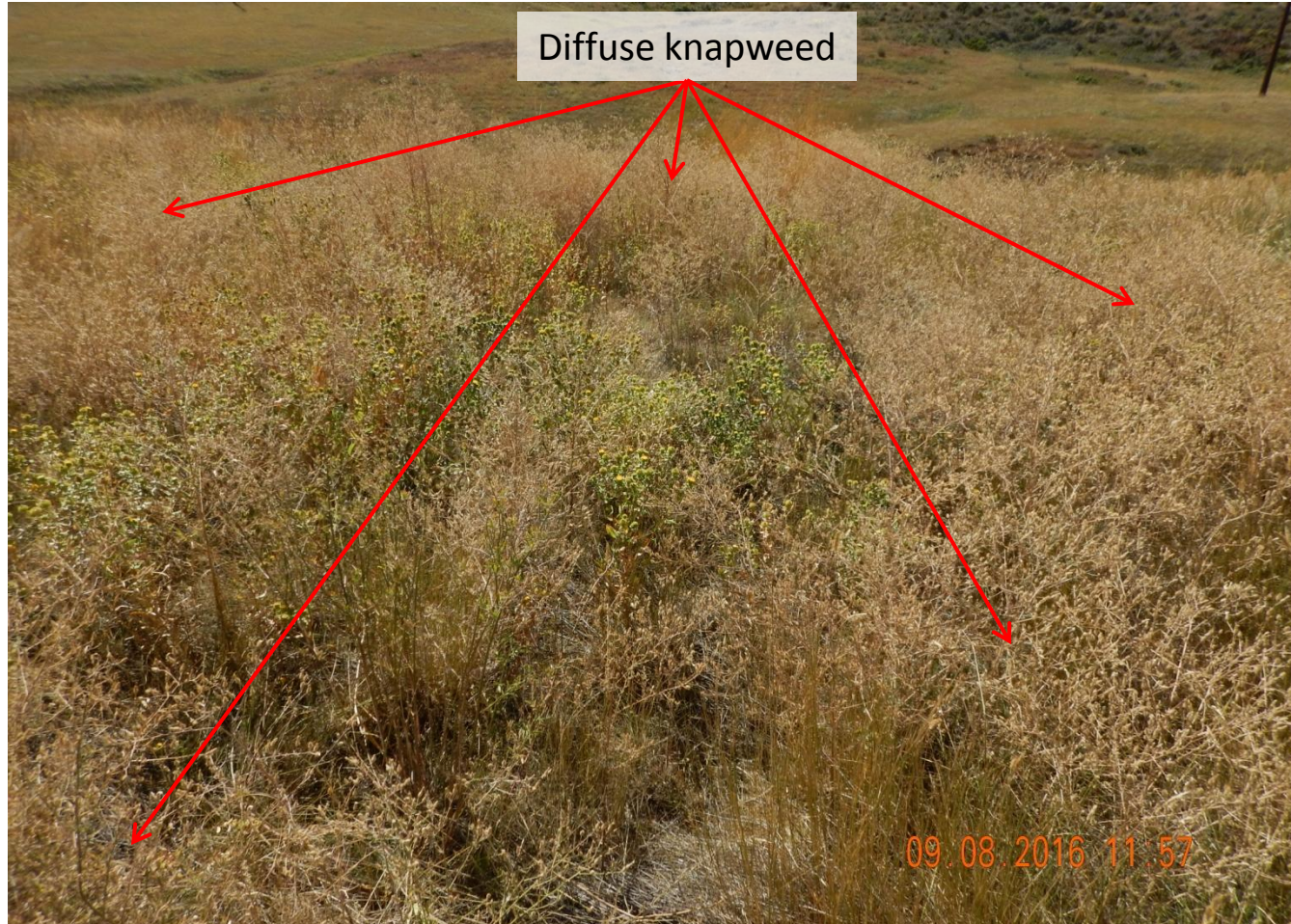


Photo 5. Photo taken from approximate center of location, facing South. Perennial vegetation has established at location but the location is inundated with a Colorado List B noxious weed, Diffuse knapweed (*Centaurea diffusa*).

Final Reclamation Inspection



Photo 6. Close-up photo taken of Diffuse knapweed.

Final Reclamation Inspection



Photo 7. Photo taken from Culvert #1, facing East. Culvert needs to be removed to establish natural flows, need to remove gravel used to arm the culvert and reseed with native, perennial vegetation that is representative.

Final Reclamation Inspection



Photo 8. Photo taken from Culvert #1, facing West. Access road needs to be stabilized with native, perennial vegetation to prevent further erosion.

Final Reclamation Inspection



Photo 9. Photo taken of Culvert #2 that remains behind and needs to be removed.

Final Reclamation Inspection



Photo 10. Photo taken along the access road, facing North. Access needs to be re-contoured to the surrounding landscape which will help to prevent erosion which is noticeable along several portions of the access road.

Final Reclamation Inspection



Photo 11. Photo taken along the access road, facing East. Diffuse knapweed and a few individuals of Spotted knapweed were observed throughout the entire access road.