



## Survey Certification

7327 West Barton Road  
Casper, WY 82604  
(307)-472-6621 Fax (307) 472-5439

Operator	Synergy Resources Corp.
Well Name & No.	SRC Vista D-2N-C
API #	05-123-41058
County & State	Weld County, CO
SDI Job #	323246 / 339150
Rig	Precision 462
Survey Date	22-Jan-2016

I, Seth M. Burstad, having personal knowledge of all the facts, hereby certify that the attached directional survey run from a measured depth of 0 feet to a measured depth of 11565 feet is true and correct as determined from all available records.

A handwritten signature in blue ink that reads 'Seth M. Burstad'.

Signature

25-Jan-2016

Date

### Seth M. Burstad

Rockies Region Well Planner  
Scientific Drilling - Rocky Mountain District



Project: Weld County, CO NAD 83  
Site: SRC Vista  
Well: SRC Vista D-2N-C  
Wellbore: OH  
Design: Plan 4

Plan: Plan 4 (SRC Vista D-2N-C/OH)
Created By: Seth BurstadDate: 1-25-2016



**T M**  
Azimuths to True North  
Magnetic North: 8.64°  
  
Magnetic Field  
Strength: 52519.5snT  
Dip Angle: 66.87°  
Date: 10/27/2015  
Model: BGGM2015

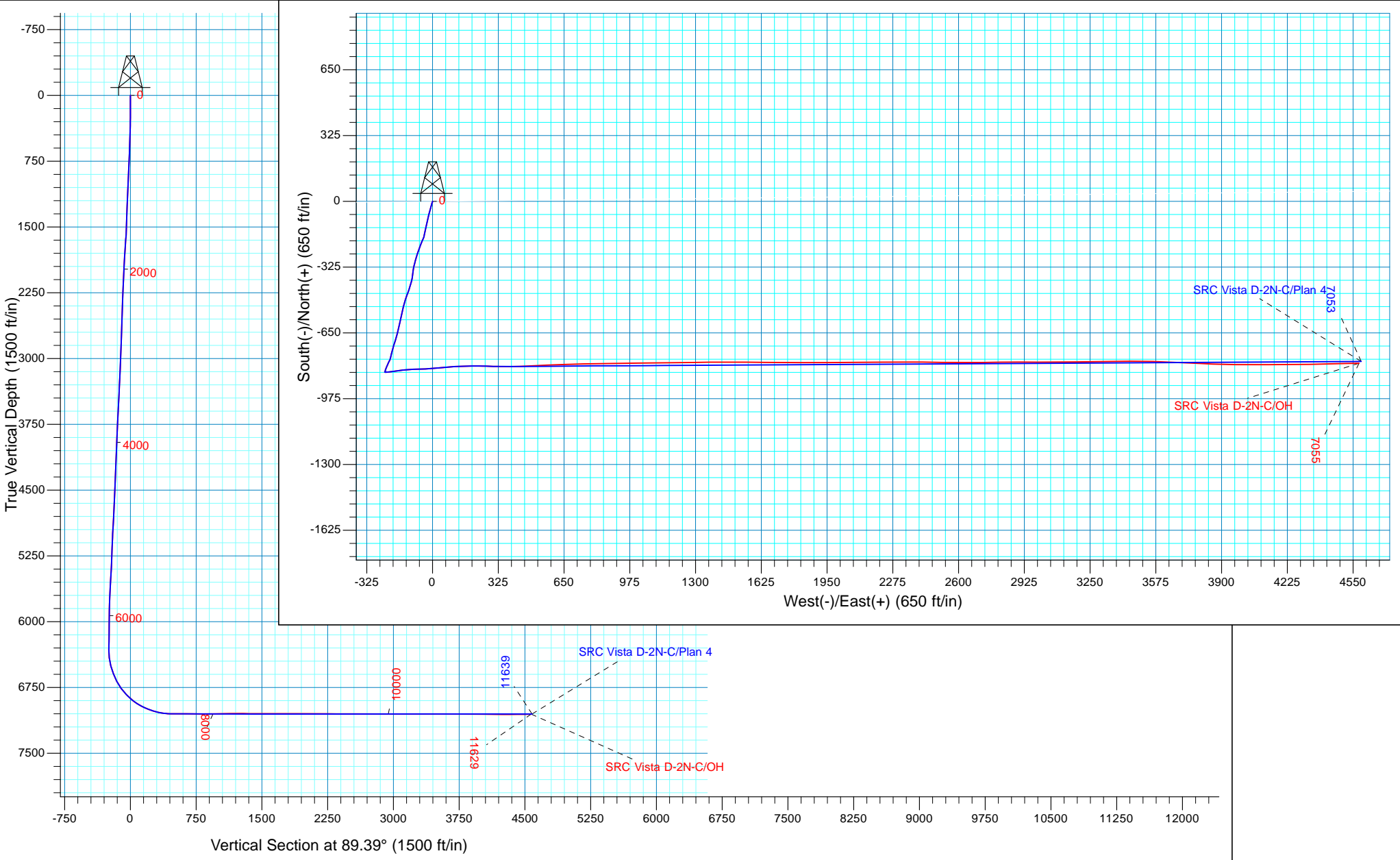
WELL DETAILS: SRC Vista D-2N-C

PROJECT DETAILS: Weld County, CO NAD 83

Geodetic System: US State Plane 1983  
Datum: North American Datum 1983  
Ellipsoid: GRS 1980  
Zone: Colorado Northern Zone

System Datum: Mean Sea Level  
Local North: True

GL 5000' & KB 20' @ 5020.00ft (Precision 462) 5000.00  
Northing Easting Latitude Longitude  
1367596.82 3145255.22 40.34128276 -104.97890500





## **Synergy Resources Corp.**

Weld County, CO NAD 83

SRC Vista

SRC Vista D-2N-C

OH

Design: OH

## **Standard Survey Report**

25 January, 2016



<b>Company:</b>	Synergy Resources Corp.	<b>Local Co-ordinate Reference:</b>	Well SRC Vista D-2N-C
<b>Project:</b>	Weld County, CO NAD 83	<b>TVD Reference:</b>	GL 5000' & KB 20' @ 5020.00ft (Precision 462)
<b>Site:</b>	SRC Vista	<b>MD Reference:</b>	GL 5000' & KB 20' @ 5020.00ft (Precision 462)
<b>Well:</b>	SRC Vista D-2N-C	<b>North Reference:</b>	True
<b>Wellbore:</b>	OH	<b>Survey Calculation Method:</b>	Minimum Curvature
<b>Design:</b>	OH	<b>Database:</b>	Casper District

<b>Project</b>	Weld County, CO NAD 83		
<b>Map System:</b>	US State Plane 1983	<b>System Datum:</b>	Mean Sea Level
<b>Geo Datum:</b>	North American Datum 1983		
<b>Map Zone:</b>	Colorado Northern Zone		

Site						SRC Vista, Site Center: S-2N-C											
Site Position:			Northing:			1,367,716.75 usft			Latitude:			40.34161200					
From:			Lat/Long			Easting:			3,145,254.51 usft			Longitude:			-104.97890500		
Position Uncertainty:			0.00 ft			Slot Radius:			13.200 in			Grid Convergence:			0.34 °		

Well	SRC Vista D-2N-C, 2103' FSL 254' FWL Sec 2 T4N R68W					
Well Position	+N/-S	0.00 ft	Northing:	1,367,596.82 usft	Latitude:	40.34128277
	+E/-W	0.00 ft	Easting:	3,145,255.22 usft	Longitude:	-104.97890500
Position Uncertainty		0.00 ft	Wellhead Elevation:	0.00 ft	Ground Level:	5,000.00 ft

<b>Wellbore</b>	OH				
<b>Magnetics</b>	<b>Model Name</b>	<b>Sample Date</b>	<b>Declination (°)</b>	<b>Dip Angle (°)</b>	<b>Field Strength (nT)</b>
	BGGM2015	10/27/2015	8.64	66.87	52,520

<b>Design</b>	OH				
<b>Audit Notes:</b>					
<b>Version:</b>	1.0	<b>Phase:</b>	ACTUAL	<b>Tie On Depth:</b>	0.00
<b>Vertical Section:</b>	<b>Depth From (TVD) (ft)</b>	<b>+N/-S (ft)</b>	<b>+E/-W (ft)</b>	<b>Direction (°)</b>	
	0.00	0.00	0.00	89.39	

<b>Survey Program</b>	<b>Date</b>	1/25/2016			
<b>From (ft)</b>	<b>To (ft)</b>	<b>Survey (Wellbore)</b>	<b>Tool Name</b>	<b>Description</b>	
164.00	617.00	Survey #1 - Surface (OH)	SDI MWD	SDI MWD - Standard ver 1.0.1	
750.00	11,629.00	Survey #2 - Intermediate / Production (OH)	SDI MWD	SDI MWD - Standard ver 1.0.1	

<b>Survey</b>										
<b>Measured Depth (ft)</b>	<b>Inclination (°)</b>	<b>Azimuth (°)</b>	<b>Vertical Depth (ft)</b>	<b>+N/-S (ft)</b>	<b>+E/-W (ft)</b>	<b>Vertical Section (ft)</b>	<b>Dogleg Rate (°/100ft)</b>	<b>Build Rate (°/100ft)</b>	<b>Turn Rate (°/100ft)</b>	
0.00	0.00	0.00	0.00	0.00	0.00	0.00	0.00	0.00	0.00	
164.00	0.32	182.49	164.00	-0.46	-0.02	-0.02	0.20	0.20	0.00	
255.00	0.99	193.44	254.99	-1.48	-0.21	-0.23	0.75	0.74	12.03	
345.00	2.48	200.79	344.95	-4.05	-1.09	-1.13	1.67	1.66	8.17	
437.00	4.89	198.40	436.75	-9.64	-3.03	-3.13	2.62	2.62	-2.60	
527.00	7.32	195.27	526.24	-18.81	-5.75	-5.95	2.72	2.70	-3.48	
610.00	10.06	197.49	608.27	-30.82	-9.32	-9.65	3.32	3.30	2.67	
<b>Last SDI MWD Surface Survey</b>										
617.00	10.29	197.62	615.16	-32.00	-9.70	-10.04	3.32	3.31	1.91	
750.00	9.14	192.20	746.26	-53.65	-15.52	-16.09	1.10	-0.86	-4.08	

<b>Company:</b>	Synergy Resources Corp.	<b>Local Co-ordinate Reference:</b>	Well SRC Vista D-2N-C
<b>Project:</b>	Weld County, CO NAD 83	<b>TVD Reference:</b>	GL 5000' & KB 20' @ 5020.00ft (Precision 462)
<b>Site:</b>	SRC Vista	<b>MD Reference:</b>	GL 5000' & KB 20' @ 5020.00ft (Precision 462)
<b>Well:</b>	SRC Vista D-2N-C	<b>North Reference:</b>	True
<b>Wellbore:</b>	OH	<b>Survey Calculation Method:</b>	Minimum Curvature
<b>Design:</b>	OH	<b>Database:</b>	Casper District

Survey									
Measured Depth (ft)	Inclination (°)	Azimuth (°)	Vertical Depth (ft)	+N/-S (ft)	+E/-W (ft)	Vertical Section (ft)	Dogleg Rate (°/100ft)	Build Rate (°/100ft)	Turn Rate (°/100ft)
811.00	9.20	192.66	806.48	-63.14	-17.62	-18.29	0.16	0.10	0.75
905.00	9.45	192.49	899.24	-78.01	-20.93	-21.76	0.27	0.27	-0.18
998.00	9.46	193.50	990.97	-92.90	-24.37	-25.36	0.18	0.01	1.09
1,093.00	9.62	194.26	1,084.66	-108.18	-28.15	-29.30	0.21	0.17	0.80
1,188.00	9.33	193.11	1,178.36	-123.37	-31.85	-33.16	0.36	-0.31	-1.21
1,471.00	8.92	190.77	1,457.78	-167.27	-41.15	-42.93	0.20	-0.14	-0.83
1,566.00	8.64	202.14	1,551.68	-181.12	-45.22	-47.14	1.85	-0.29	11.97
1,660.00	9.65	203.23	1,644.48	-194.90	-50.99	-53.06	1.09	1.07	1.16
1,754.00	9.10	200.27	1,737.22	-209.11	-56.67	-58.89	0.78	-0.59	-3.15
1,849.00	8.81	200.91	1,831.07	-222.95	-61.87	-64.24	0.32	-0.31	0.67
1,943.00	9.87	199.59	1,923.82	-237.27	-67.14	-69.66	1.15	1.13	-1.40
2,038.00	9.11	197.80	2,017.52	-252.10	-72.17	-74.85	0.86	-0.80	-1.88
2,131.00	8.75	199.21	2,109.39	-265.79	-76.74	-79.57	0.45	-0.39	1.52
2,226.00	8.98	196.45	2,203.26	-279.72	-81.22	-84.20	0.51	0.24	-2.91
2,329.00	8.40	194.01	2,305.07	-294.73	-85.32	-88.45	0.67	-0.56	-2.37
2,423.00	9.34	194.61	2,397.95	-308.78	-88.91	-92.19	1.00	1.00	0.64
2,517.00	9.05	193.02	2,490.74	-323.36	-92.50	-95.93	0.41	-0.31	-1.69
2,610.00	8.00	190.74	2,582.71	-336.84	-95.35	-98.93	1.19	-1.13	-2.45
2,703.00	8.57	184.53	2,674.74	-350.11	-97.10	-100.82	1.14	0.61	-6.68
2,796.00	9.38	185.98	2,766.60	-364.56	-98.44	-102.32	0.90	0.87	1.56
2,890.00	9.84	192.40	2,859.29	-380.02	-100.96	-105.00	1.24	0.49	6.83
2,982.00	9.05	193.62	2,950.04	-394.73	-104.35	-108.55	0.89	-0.86	1.33
3,075.00	9.60	195.95	3,041.81	-409.29	-108.21	-112.56	0.72	0.59	2.51
3,168.00	8.85	197.24	3,133.61	-423.58	-112.46	-116.96	0.84	-0.81	1.39
3,261.00	8.36	198.21	3,225.56	-436.84	-116.69	-121.34	0.55	-0.53	1.04
3,356.00	8.79	198.74	3,319.50	-450.27	-121.18	-125.97	0.46	0.45	0.56
3,449.00	6.56	204.36	3,411.66	-461.84	-125.66	-130.57	2.53	-2.40	6.04
3,545.00	7.55	201.04	3,506.93	-472.72	-130.18	-135.21	1.11	1.03	-3.46
3,638.00	9.99	196.63	3,598.84	-486.16	-134.69	-139.85	2.72	2.62	-4.74
3,732.00	10.64	192.70	3,691.32	-502.44	-138.93	-144.27	1.02	0.69	-4.18
3,826.00	10.43	196.35	3,783.74	-519.07	-143.23	-148.75	0.74	-0.22	3.88
3,922.00	9.60	195.36	3,878.27	-535.12	-147.80	-153.49	0.88	-0.86	-1.03
4,017.00	9.02	192.00	3,972.02	-550.05	-151.44	-157.29	0.84	-0.61	-3.54
4,111.00	10.08	192.93	4,064.72	-565.27	-154.82	-160.83	1.14	1.13	0.99
4,206.00	9.15	187.97	4,158.38	-580.86	-157.72	-163.90	1.31	-0.98	-5.22
4,300.00	9.54	192.58	4,251.14	-595.86	-160.46	-166.79	0.90	0.41	4.90
4,395.00	10.26	194.34	4,344.72	-611.74	-164.27	-170.77	0.82	0.76	1.85
4,490.00	9.73	195.20	4,438.28	-627.69	-168.47	-175.14	0.58	-0.56	0.91
4,584.00	9.20	192.63	4,531.00	-642.68	-172.19	-179.03	0.72	-0.56	-2.73
4,679.00	9.85	194.16	4,624.69	-657.97	-175.84	-182.84	0.73	0.68	1.61
4,773.00	9.18	195.54	4,717.40	-672.99	-179.82	-186.97	0.75	-0.71	1.47
4,868.00	9.90	195.60	4,811.08	-688.16	-184.04	-191.36	0.76	0.76	0.06
4,963.00	9.67	200.88	4,904.70	-703.48	-189.08	-196.56	0.97	-0.24	5.56

<b>Company:</b>	Synergy Resources Corp.	<b>Local Co-ordinate Reference:</b>	Well SRC Vista D-2N-C
<b>Project:</b>	Weld County, CO NAD 83	<b>TVD Reference:</b>	GL 5000' & KB 20' @ 5020.00ft (Precision 462)
<b>Site:</b>	SRC Vista	<b>MD Reference:</b>	GL 5000' & KB 20' @ 5020.00ft (Precision 462)
<b>Well:</b>	SRC Vista D-2N-C	<b>North Reference:</b>	True
<b>Wellbore:</b>	OH	<b>Survey Calculation Method:</b>	Minimum Curvature
<b>Design:</b>	OH	<b>Database:</b>	Casper District

Survey										
Measured Depth (ft)	Inclination (°)	Azimuth (°)	Vertical Depth (ft)	+N/-S (ft)	+E/-W (ft)	Vertical Section (ft)	Dogleg Rate (°/100ft)	Build Rate (°/100ft)	Turn Rate (°/100ft)	
5,057.00	10.22	196.51	4,997.29	-718.85	-194.27	-201.91	0.99	0.59	-4.65	
5,152.00	8.61	194.12	5,091.01	-733.83	-198.40	-206.20	1.74	-1.69	-2.52	
5,247.00	9.05	193.06	5,184.88	-748.01	-201.82	-209.77	0.49	0.46	-1.12	
5,342.00	7.97	195.46	5,278.84	-761.63	-205.27	-213.36	1.20	-1.14	2.53	
5,437.00	8.09	192.51	5,372.91	-774.51	-208.47	-216.70	0.45	0.13	-3.11	
5,531.00	9.05	206.15	5,465.86	-787.60	-213.16	-221.53	2.38	1.02	14.51	
5,627.00	7.49	204.72	5,560.86	-800.06	-219.10	-227.61	1.64	-1.63	-1.49	
5,722.00	6.50	205.12	5,655.16	-810.56	-223.98	-232.59	1.04	-1.04	0.42	
5,817.00	5.70	202.09	5,749.62	-819.80	-228.03	-236.75	0.91	-0.84	-3.19	
5,912.00	4.10	200.00	5,844.27	-827.36	-230.97	-239.76	1.69	-1.68	-2.20	
6,007.00	3.34	196.96	5,939.07	-833.20	-232.94	-241.80	0.83	-0.80	-3.20	
6,101.00	2.54	175.25	6,032.94	-837.89	-233.56	-242.47	1.44	-0.85	-23.10	
6,197.00	1.19	208.06	6,128.89	-840.89	-233.86	-242.80	1.74	-1.41	34.18	
6,292.00	1.30	252.63	6,223.87	-842.09	-235.35	-244.30	1.00	0.12	46.92	
6,387.00	1.15	217.36	6,318.85	-843.17	-236.96	-245.92	0.80	-0.16	-37.13	
6,479.00	6.19	90.25	6,410.69	-843.92	-232.55	-241.52	7.55	5.48	-138.16	
6,574.00	15.46	84.19	6,503.90	-842.66	-214.79	-223.75	9.82	9.76	-6.38	
6,669.00	21.60	81.23	6,593.93	-838.71	-184.89	-193.81	6.54	6.46	-3.12	
6,763.00	27.41	82.98	6,679.43	-833.42	-146.28	-155.14	6.23	6.18	1.86	
6,858.00	35.14	87.75	6,760.58	-829.67	-97.18	-106.00	8.54	8.14	5.02	
6,953.00	45.18	88.27	6,833.09	-827.57	-36.02	-44.83	10.57	10.57	0.55	
7,047.00	49.84	83.45	6,896.58	-822.46	33.05	24.29	6.23	4.96	-5.13	
7,140.00	60.35	86.89	6,949.73	-816.20	108.93	100.24	11.70	11.30	3.70	
7,235.00	68.30	89.79	6,990.87	-813.79	194.44	185.76	8.81	8.37	3.05	
7,330.00	72.27	91.59	7,022.91	-814.89	283.84	275.15	4.54	4.18	1.89	
7,425.00	83.10	90.16	7,043.15	-816.28	376.50	367.79	11.49	11.40	-1.51	
7,458.00	84.01	89.43	7,046.85	-816.16	409.29	400.58	3.53	2.76	-2.21	
Last SDI MWD Curve Survey										
7,523.00	90.20	86.41	7,050.13	-813.80	474.13	465.44	10.59	9.52	-4.65	
7,613.00	89.90	87.82	7,050.05	-809.27	564.01	555.36	1.60	-0.33	1.57	
7,702.00	89.03	87.95	7,050.88	-805.99	652.95	644.33	0.99	-0.98	0.15	
7,792.00	88.69	88.79	7,052.67	-803.43	742.89	734.29	1.01	-0.38	0.93	
7,882.00	90.47	89.44	7,053.33	-802.04	832.87	824.29	2.11	1.98	0.72	
7,972.00	91.01	89.06	7,052.17	-800.86	922.86	914.28	0.73	0.60	-0.42	
8,062.00	91.61	88.79	7,050.11	-799.17	1,012.82	1,004.25	0.73	0.67	-0.30	
8,152.00	90.13	89.74	7,048.75	-798.02	1,102.80	1,094.24	1.95	-1.64	1.06	
8,241.00	90.87	89.25	7,047.97	-797.23	1,191.79	1,183.23	1.00	0.83	-0.55	
8,331.00	88.89	89.32	7,048.16	-796.11	1,281.78	1,273.23	2.20	-2.20	0.08	
8,421.00	89.83	89.18	7,049.17	-794.93	1,371.76	1,363.22	1.06	1.04	-0.16	
8,511.00	89.97	90.28	7,049.32	-794.51	1,461.76	1,453.22	1.23	0.16	1.22	
8,601.00	90.03	90.27	7,049.32	-794.94	1,551.76	1,543.21	0.07	0.07	-0.01	
8,690.00	90.00	90.42	7,049.30	-795.48	1,640.76	1,632.20	0.17	-0.03	0.17	
8,780.00	90.07	90.34	7,049.24	-796.07	1,730.76	1,722.18	0.12	0.08	-0.09	
8,870.00	89.87	90.40	7,049.29	-796.66	1,820.75	1,812.17	0.23	-0.22	0.07	

<b>Company:</b>	Synergy Resources Corp.	<b>Local Co-ordinate Reference:</b>	Well SRC Vista D-2N-C
<b>Project:</b>	Weld County, CO NAD 83	<b>TVD Reference:</b>	GL 5000' & KB 20' @ 5020.00ft (Precision 462)
<b>Site:</b>	SRC Vista	<b>MD Reference:</b>	GL 5000' & KB 20' @ 5020.00ft (Precision 462)
<b>Well:</b>	SRC Vista D-2N-C	<b>North Reference:</b>	True
<b>Wellbore:</b>	OH	<b>Survey Calculation Method:</b>	Minimum Curvature
<b>Design:</b>	OH	<b>Database:</b>	Casper District

Survey									
Measured Depth (ft)	Inclination (°)	Azimuth (°)	Vertical Depth (ft)	+N/-S (ft)	+E/-W (ft)	Vertical Section (ft)	Dogleg Rate (°/100ft)	Build Rate (°/100ft)	Turn Rate (°/100ft)
8,960.00	89.97	89.80	7,049.42	-796.81	1,910.75	1,902.16	0.68	0.11	-0.67
9,050.00	89.83	89.54	7,049.57	-796.29	2,000.75	1,992.16	0.33	-0.16	-0.29
9,140.00	89.83	89.07	7,049.84	-795.20	2,090.74	2,082.16	0.52	0.00	-0.52
9,230.00	89.70	90.37	7,050.21	-794.76	2,180.74	2,172.16	1.45	-0.14	1.44
9,319.00	89.66	89.95	7,050.71	-795.01	2,269.74	2,261.15	0.47	-0.04	-0.47
9,409.00	89.66	89.16	7,051.24	-794.31	2,359.73	2,351.14	0.88	0.00	-0.88
9,499.00	90.23	91.19	7,051.33	-794.59	2,449.73	2,441.13	2.34	0.63	2.26
9,589.00	89.43	90.15	7,051.59	-795.64	2,539.72	2,531.10	1.46	-0.89	-1.16
9,679.00	89.66	90.06	7,052.31	-795.80	2,629.72	2,621.09	0.27	0.26	-0.10
9,769.00	89.90	89.86	7,052.65	-795.74	2,719.72	2,711.09	0.35	0.27	-0.22
9,859.00	89.97	88.88	7,052.76	-794.75	2,809.71	2,801.09	1.09	0.08	-1.09
9,949.00	89.60	90.49	7,053.09	-794.26	2,899.70	2,891.08	1.84	-0.41	1.79
10,038.00	90.03	90.01	7,053.38	-794.65	2,988.70	2,980.07	0.72	0.48	-0.54
10,128.00	89.73	89.61	7,053.57	-794.35	3,078.70	3,070.07	0.56	-0.33	-0.44
10,218.00	90.03	89.29	7,053.76	-793.48	3,168.70	3,160.07	0.49	0.33	-0.36
10,308.00	89.93	88.70	7,053.79	-791.90	3,258.68	3,250.07	0.66	-0.11	-0.66
10,398.00	89.93	89.71	7,053.90	-790.66	3,348.67	3,340.06	1.12	0.00	1.12
10,488.00	90.87	89.93	7,053.27	-790.37	3,438.67	3,430.06	1.07	1.04	0.24
10,577.00	90.37	90.72	7,052.31	-790.88	3,527.66	3,519.04	1.05	-0.56	0.89
10,667.00	90.47	92.36	7,051.65	-793.30	3,617.62	3,608.97	1.83	0.11	1.82
10,757.00	88.69	92.78	7,052.31	-797.33	3,707.53	3,698.83	2.03	-1.98	0.47
10,847.00	89.16	91.82	7,054.00	-800.94	3,797.44	3,788.69	1.19	0.52	-1.07
10,937.00	89.09	92.69	7,055.37	-804.48	3,887.36	3,878.57	0.97	-0.08	0.97
11,026.00	89.46	90.61	7,056.50	-807.05	3,976.31	3,967.49	2.37	0.42	-2.34
11,116.00	89.80	89.80	7,057.08	-807.37	4,066.30	4,057.48	0.98	0.38	-0.90
11,206.00	89.13	89.29	7,057.92	-806.65	4,156.30	4,147.47	0.94	-0.74	-0.57
11,296.00	90.30	89.56	7,058.37	-805.75	4,246.29	4,237.47	1.33	1.30	0.30
11,385.00	91.04	89.44	7,057.33	-804.97	4,335.28	4,326.46	0.84	0.83	-0.13
11,475.00	90.17	88.65	7,056.38	-803.47	4,425.26	4,416.45	1.31	-0.97	-0.88
11,565.00	90.64	88.57	7,055.74	-801.29	4,515.23	4,506.44	0.53	0.52	-0.09
Last SDI MWD Survey									
11,629.00	90.64	88.57	7,055.03	-799.69	4,579.21	4,570.43	0.00	0.00	0.00
Projection to TD									

Design Annotations				
Measured Depth (ft)	Vertical Depth (ft)	Local Coordinates		Comment
		+N/-S (ft)	+E/-W (ft)	
610.00	608.27	-30.82	-9.32	Last SDI MWD Surface Survey
7,458.00	7,046.85	-816.16	409.29	Last SDI MWD Curve Survey
11,565.00	7,055.74	-801.29	4,515.23	Last SDI MWD Survey
11,629.00	7,055.03	-799.69	4,579.21	Projection to TD

<b>Company:</b>	Synergy Resources Corp.	<b>Local Co-ordinate Reference:</b>	Well SRC Vista D-2N-C
<b>Project:</b>	Weld County, CO NAD 83	<b>TVD Reference:</b>	GL 5000' & KB 20' @ 5020.00ft (Precision 462)
<b>Site:</b>	SRC Vista	<b>MD Reference:</b>	GL 5000' & KB 20' @ 5020.00ft (Precision 462)
<b>Well:</b>	SRC Vista D-2N-C	<b>North Reference:</b>	True
<b>Wellbore:</b>	OH	<b>Survey Calculation Method:</b>	Minimum Curvature
<b>Design:</b>	OH	<b>Database:</b>	Casper District

Checked By: _____	Approved By: _____	Date: _____
-------------------	--------------------	-------------