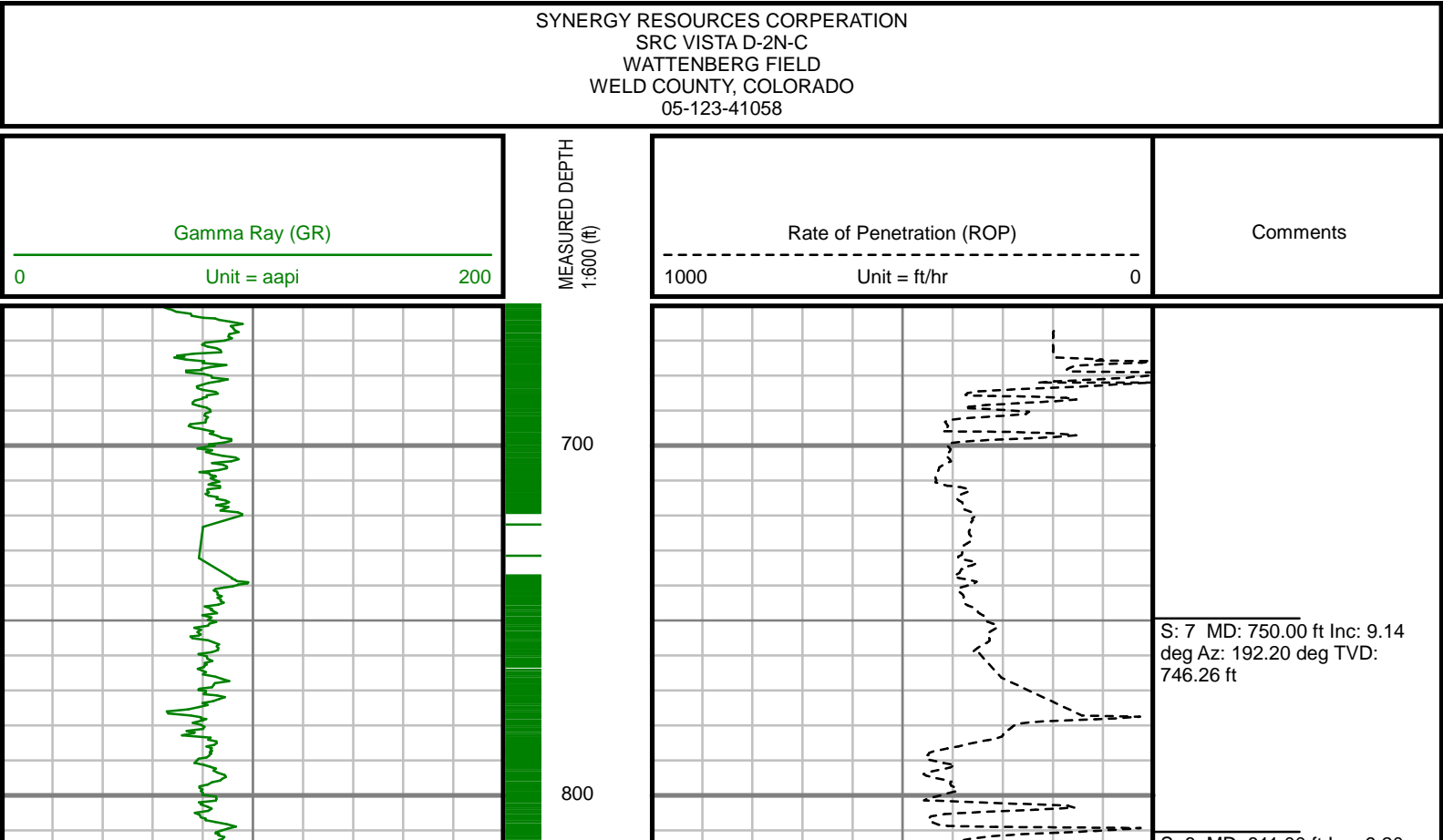
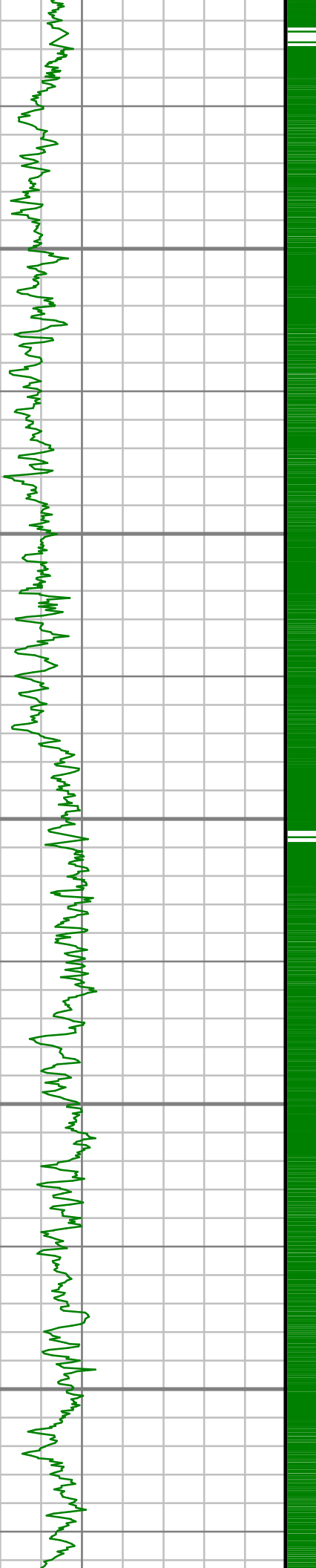


Remarks
SCIENTIFIC DRILLING INTERNATIONAL JOB# 339150
ALL REFERENCES IN THE DEPTH TRACK ARE AT BIT DEPTH.
ALL DATA IS MEMORY DATA UNLESS STATED OTHERWISE.
FLAT AVERAGE FILTER OF 1.00 FT APPLIED TO GAMMA RAY CURVE
RUN # 1: MWD / PROPAGATION RESISTIVITY / GAMMA RAY LOGGING RUN
SENSORS: S/N: PULSER = 128-324 / MP6 = 243 / MWD EYE = 0768 / PRT = 341 / GAMMA RAY = 1434
BIT TO SENSOR OFFSETS: SURVEY = 56.32 FT. / PRT = 45.67 FT. / GAMMA RAY = 38.97 FT.
RUN # 2: MWD / GAMMA RAY LOGGING RUN
SENSORS: S/N: PULSER = 78-220 / MP6 = 379 / MWD EYE = 0414 / GAMMA RAY = 1434
BIT TO SENSOR OFFSETS: SURVEY = 54.22 FT. / GAMMA RAY = 45.57 FT.
REMARK # 1: FROM 11542 FT. TO 11576 FT. ROP INFORMATION WAS NOT LOGGED DUE TO PASON GOING DOWN.
MNEMONICS LIST:
GR = GAMMA RAY
ROP = RATE OF PENETRATION

All interpretations are opinions based on inferences from electrical or other measurements and we cannot, and do not guarantee the accuracy or correctness of any interpretations, and we shall not, except in the case of gross or willful negligence on our part, be liable or responsible for any loss, costs, damages or expenses incurred or sustained by anyone resulting from any interpretation made by any of our officers, agents or employees. These interpretations are also subject to our general terms and conditions as set out in our current price schedule.





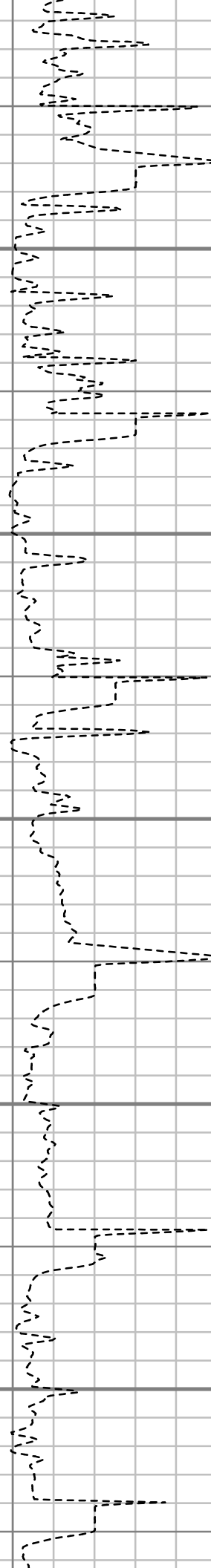
900

1000

1100

1200

1300



S: 8 MD: 811.00 ft Inc: 9.20
deg Az: 192.66 deg TVD:
806.48 ft

S: 9 MD: 905.00 ft Inc: 9.45
deg Az: 192.49 deg TVD:
899.24 ft

S: 10 MD: 998.00 ft Inc: 9.46
deg Az: 193.50 deg TVD:
990.97 ft

S: 11 MD: 1093.00 ft Inc: 9.62
deg Az: 194.26 deg TVD:
1084.66 ft

S: 12 MD: 1188.00 ft Inc: 9.33
deg Az: 193.11 deg TVD:
1178.36 ft



1400

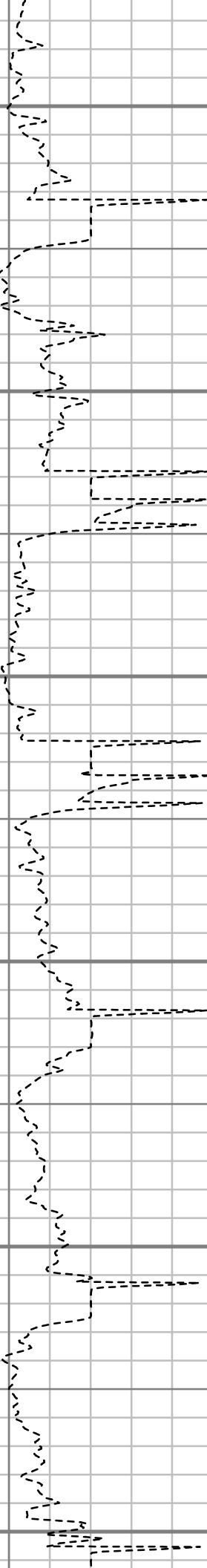
1500

1600

1700

1800

1900



S: 13 MD: 1471.00 ft Inc: 8.92
deg Az: 190.77 deg TVD:
1457.79 ft

S: 14 MD: 1566.00 ft Inc: 8.64
deg Az: 202.14 deg TVD:
1551.68 ft

S: 15 MD: 1660.00 ft Inc: 9.65
deg Az: 203.23 deg TVD:
1644.48 ft

S: 16 MD: 1754.00 ft Inc: 9.10
deg Az: 200.27 deg TVD:
1737.23 ft

S: 17 MD: 1849.00 ft Inc: 8.81
deg Az: 200.91 deg TVD:
1831.07 ft



2000

2100

2200

2300

2400

S: 18 MD: 1943.00 ft Inc: 9.87
deg Az: 199.59 deg TVD:
1923.82 ft

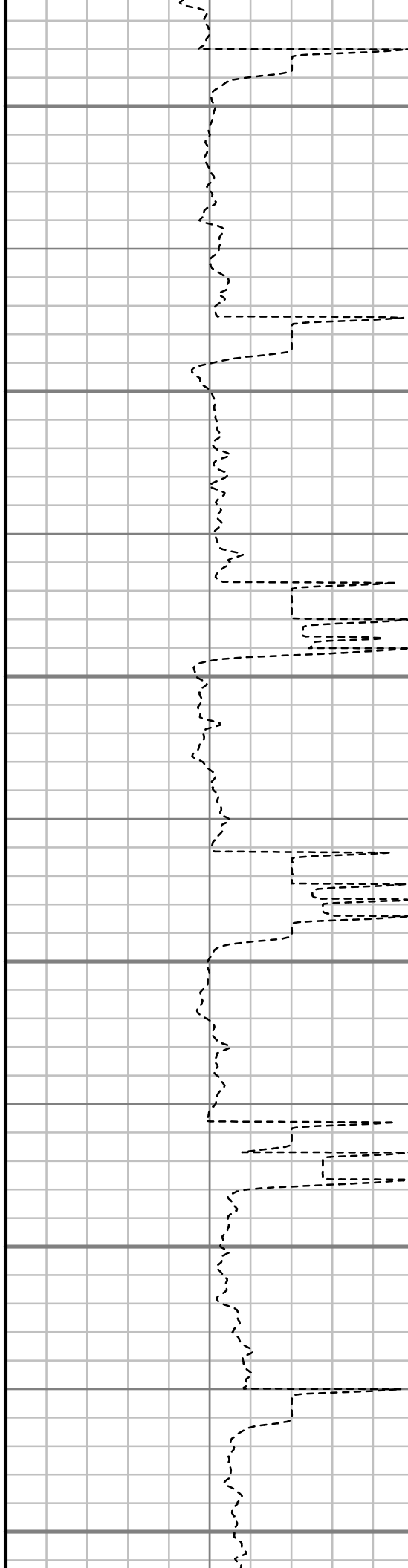
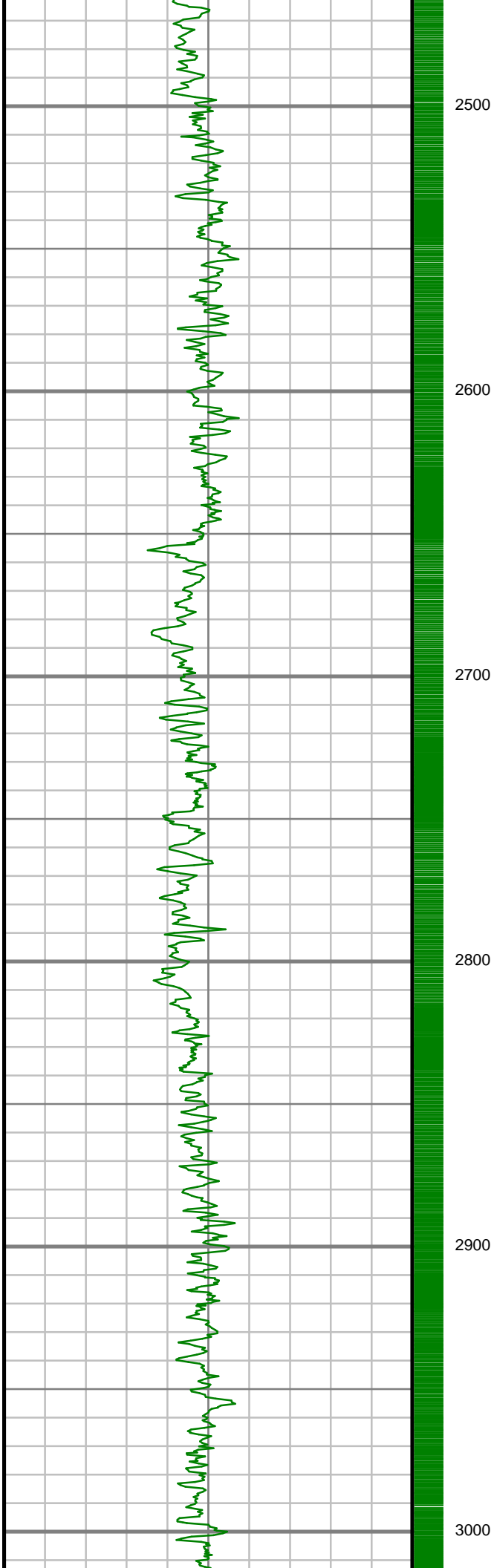
S: 19 MD: 2038.00 ft Inc: 9.11
deg Az: 197.80 deg TVD:
2017.52 ft

S: 20 MD: 2131.00 ft Inc: 8.75
deg Az: 199.21 deg TVD:
2109.39 ft

S: 21 MD: 2226.00 ft Inc: 8.98
deg Az: 196.45 deg TVD:
2203.26 ft

S: 22 MD: 2329.00 ft Inc: 8.40
deg Az: 194.01 deg TVD:
2305.08 ft

S: 23 MD: 2423.00 ft Inc: 9.34
deg Az: 194.61 deg TVD:
2397.95 ft



S: 24 MD: 2517.00 ft Inc: 9.05
deg Az: 193.02 deg TVD:
2490.74 ft

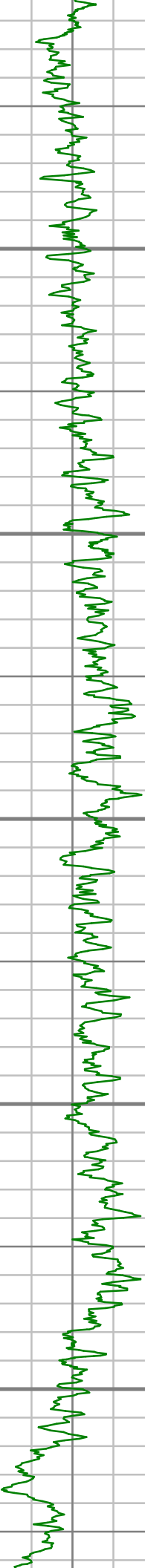
S: 25 MD: 2610.00 ft Inc: 8.00
deg Az: 190.74 deg TVD:
2582.72 ft

S: 26 MD: 2703.00 ft Inc: 8.57
deg Az: 184.53 deg TVD:
2674.75 ft

S: 27 MD: 2796.00 ft Inc: 9.38
deg Az: 185.98 deg TVD:
2766.61 ft

S: 28 MD: 2890.00 ft Inc: 9.84
deg Az: 192.40 deg TVD:
2859.29 ft

S: 29 MD: 2982.00 ft Inc: 9.05
deg Az: 193.62 deg TVD:
2950.04 ft



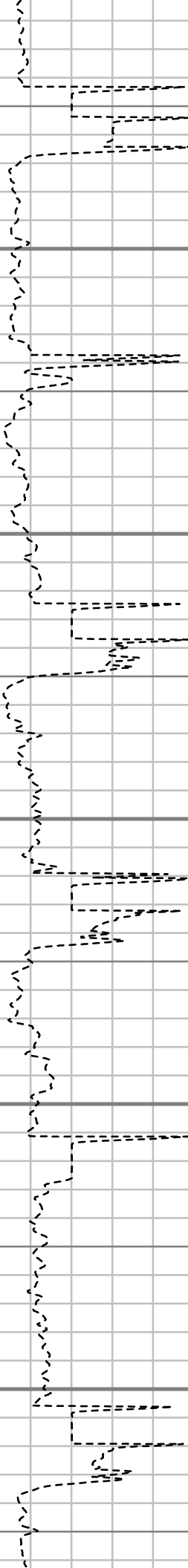
3100

3200

3300

3400

3500



S: 30 MD: 3075.00 ft Inc: 9.60
deg Az: 195.95 deg TVD:
3041.82 ft

S: 31 MD: 3168.00 ft Inc: 8.85
deg Az: 197.24 deg TVD:
3133.61 ft

S: 32 MD: 3261.00 ft Inc: 8.36
deg Az: 198.21 deg TVD:
3225.57 ft

S: 33 MD: 3356.00 ft Inc: 8.79
deg Az: 198.74 deg TVD:
3319.50 ft

S: 34 MD: 3449.00 ft Inc: 6.56
deg Az: 204.36 deg TVD:
3411.67 ft

S: 35 MD: 3545.00 ft Inc: 7.55
deg Az: 201.04 deg TVD:
3506.94 ft



3600

3700

3800

3900

4000

4100

S: 36 MD: 3638.00 ft Inc: 9.99
deg Az: 196.63 deg TVD:
3598.85 ft

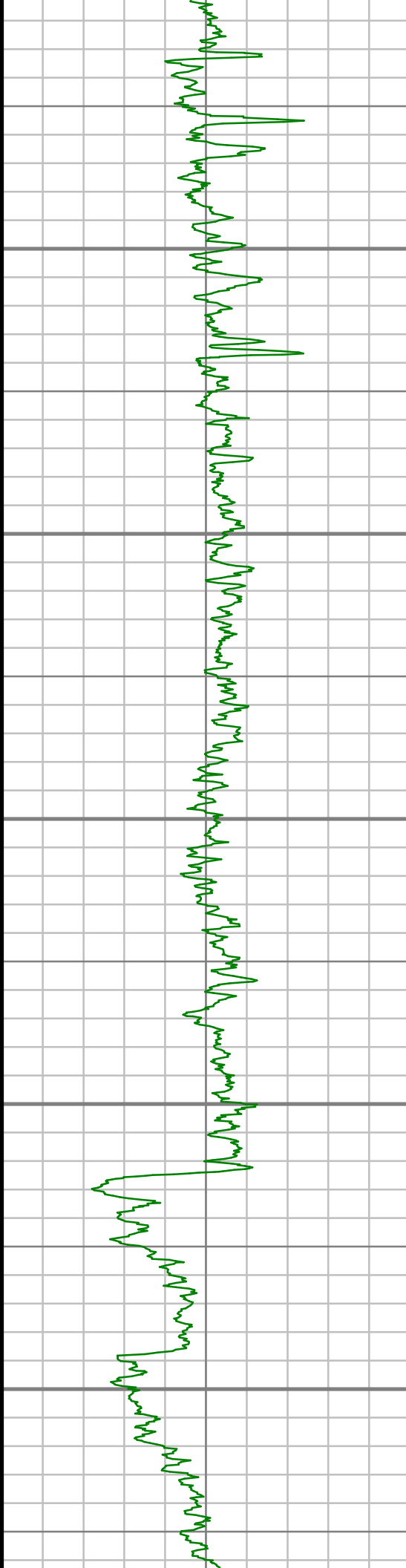
S: 37 MD: 3732.00 ft Inc: 10.64
deg Az: 192.70 deg TVD:
3691.33 ft

S: 38 MD: 3826.00 ft Inc: 10.43
deg Az: 196.35 deg TVD:
3783.75 ft

S: 39 MD: 3922.00 ft Inc: 9.60
deg Az: 195.36 deg TVD:
3878.28 ft

S: 40 MD: 4017.00 ft Inc: 9.02
deg Az: 192.00 deg TVD:
3972.03 ft

S: 41 MD: 4114.00 ft Inc: 10.00



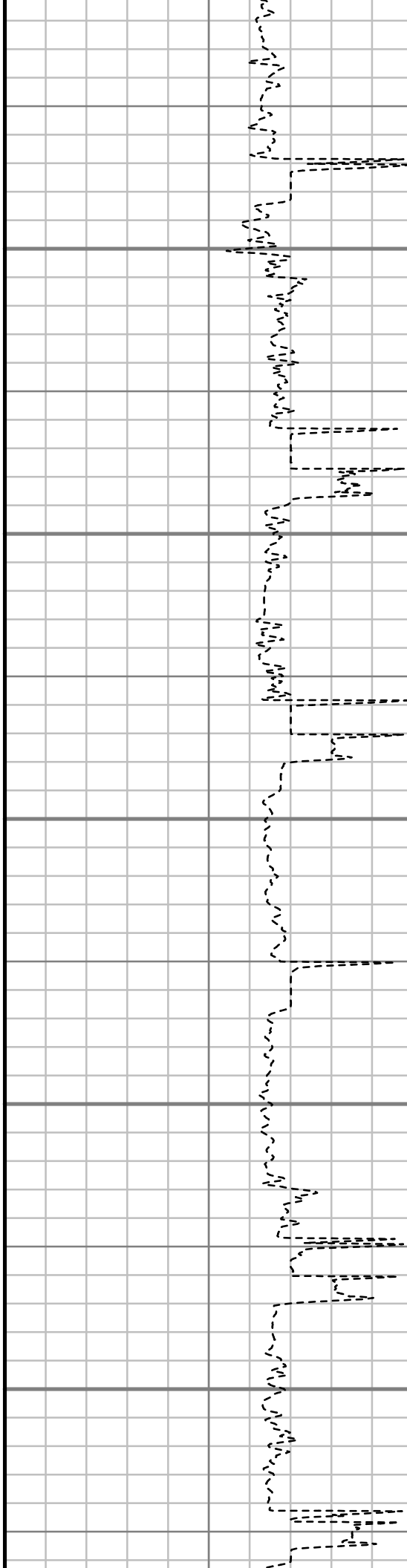
4200

4300

4400

4500

4600



S: 41 MD: 4111.00 ft Inc: 10.08
deg Az: 192.93 deg TVD:
4064.73 ft

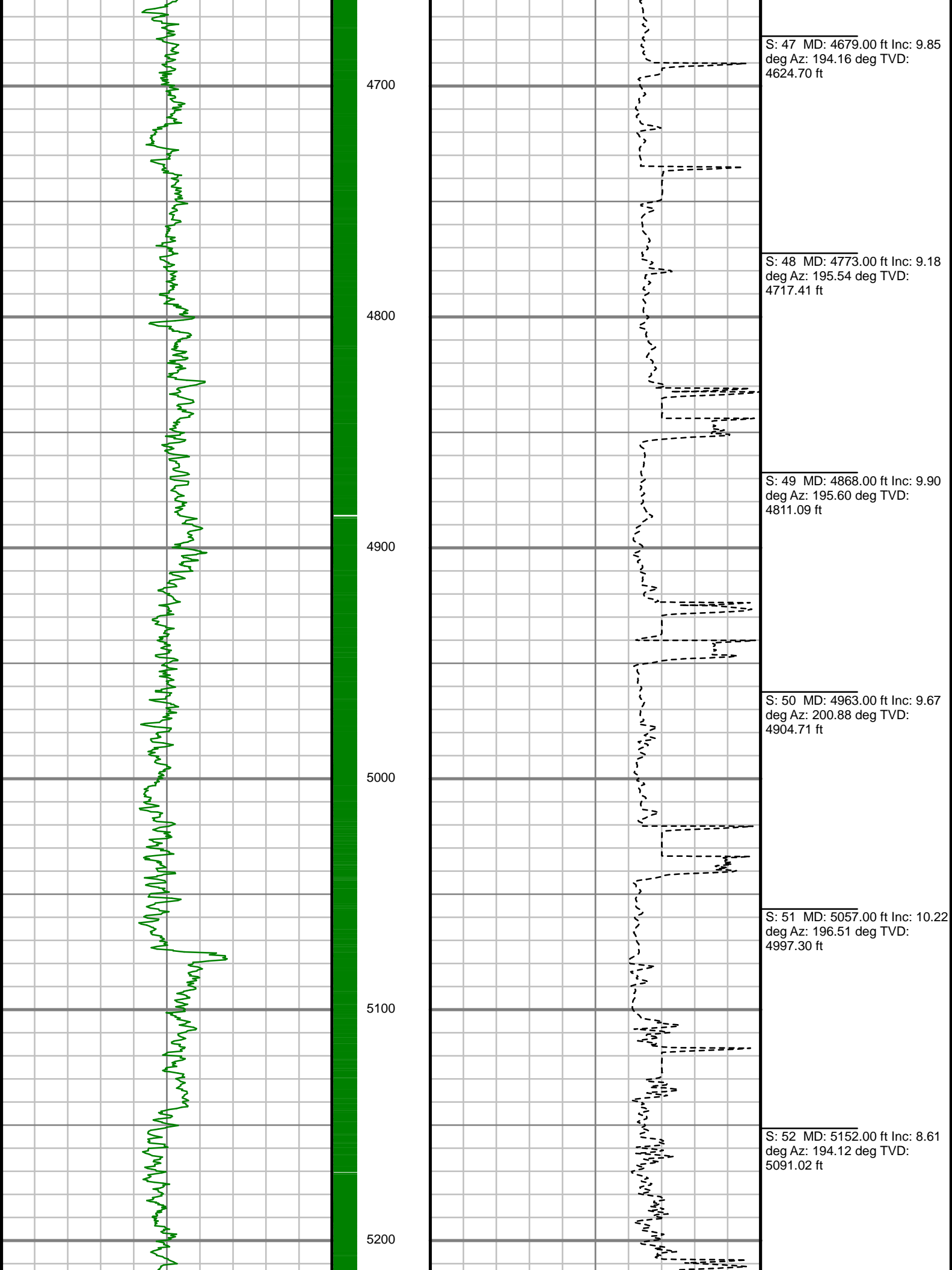
S: 42 MD: 4206.00 ft Inc: 9.15
deg Az: 187.97 deg TVD:
4158.39 ft

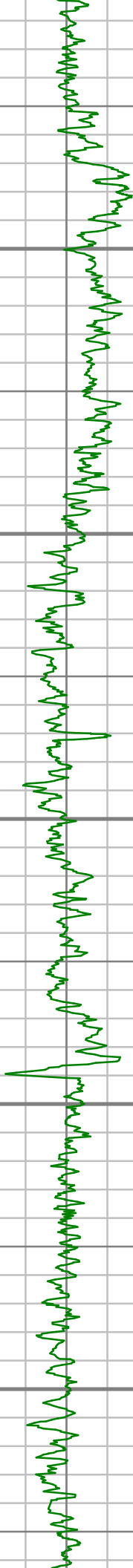
S: 43 MD: 4300.00 ft Inc: 9.54
deg Az: 192.58 deg TVD:
4251.15 ft

S: 44 MD: 4395.00 ft Inc: 10.26
deg Az: 194.34 deg TVD:
4344.73 ft

S: 45 MD: 4490.00 ft Inc: 9.73
deg Az: 195.20 deg TVD:
4438.29 ft

S: 46 MD: 4584.00 ft Inc: 9.20
deg Az: 192.63 deg TVD:
4531.01 ft





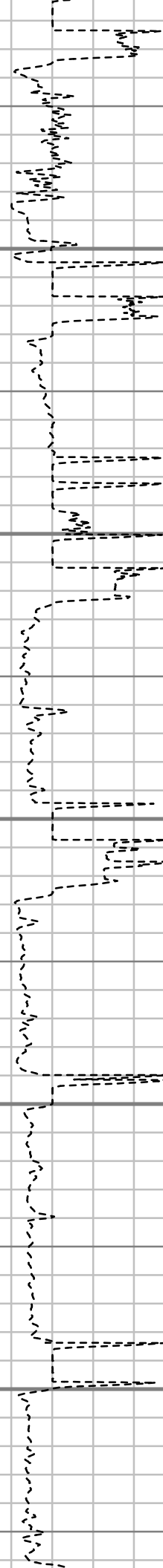
5300

5400

5500

5600

5700



S: 53 MD: 5247.00 ft Inc: 9.05
deg Az: 193.06 deg TVD:
5184.90 ft

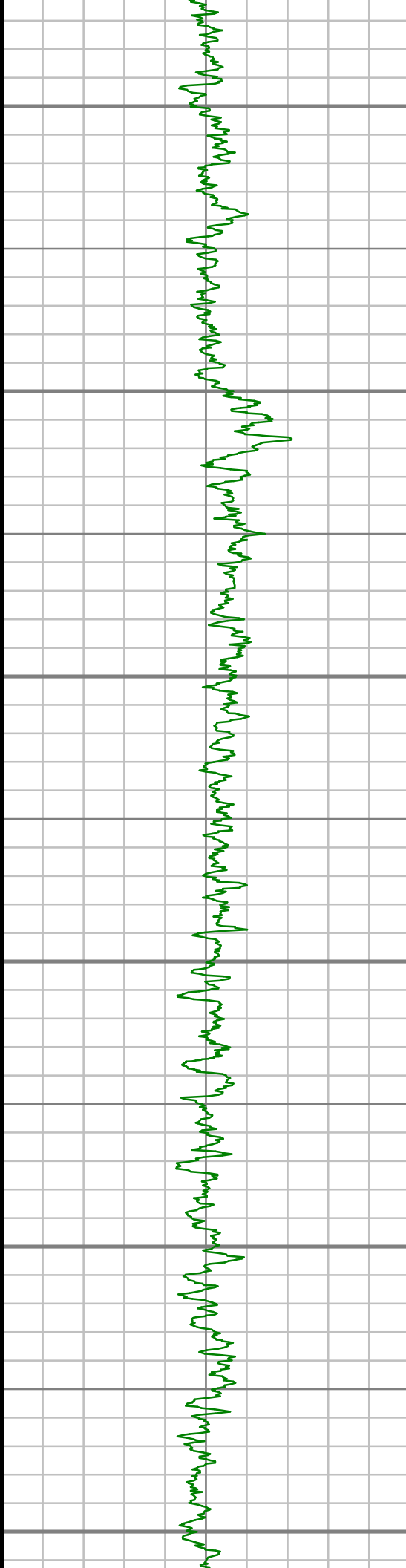
S: 54 MD: 5342.00 ft Inc: 7.97
deg Az: 195.46 deg TVD:
5278.85 ft

S: 55 MD: 5437.00 ft Inc: 8.09
deg Az: 192.51 deg TVD:
5372.92 ft

S: 56 MD: 5531.00 ft Inc: 9.05
deg Az: 206.15 deg TVD:
5465.88 ft

S: 57 MD: 5627.00 ft Inc: 7.49
deg Az: 204.72 deg TVD:
5560.87 ft

S: 58 MD: 5722.00 ft Inc: 6.50
deg Az: 205.12 deg TVD:
5655.17 ft



5800

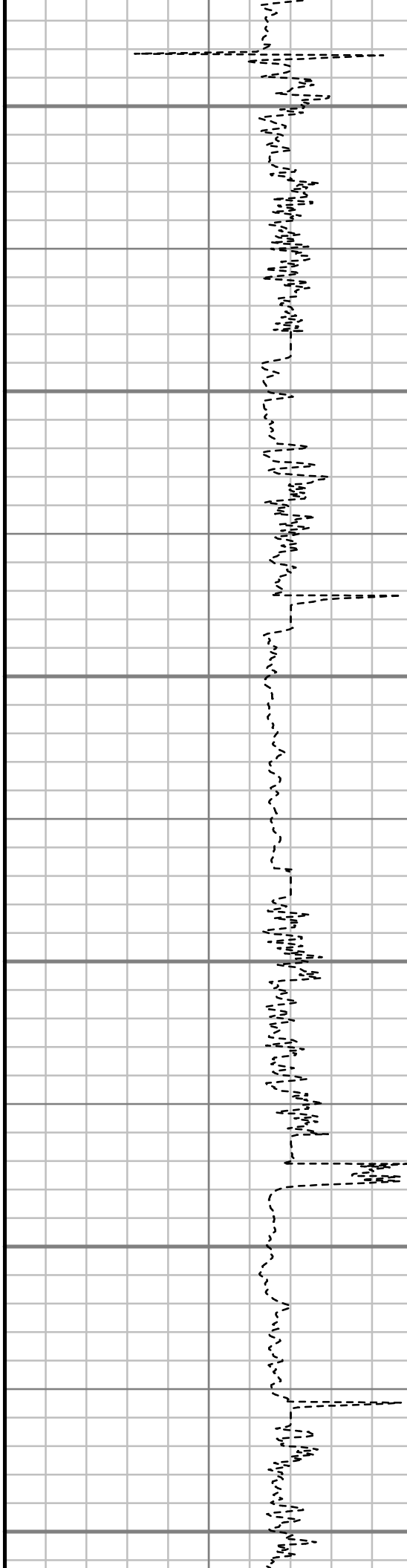
5900

6000

6100

6200

6300



S: 59 MD: 5817.00 ft Inc: 5.70
deg Az: 202.09 deg TVD:
5749.63 ft

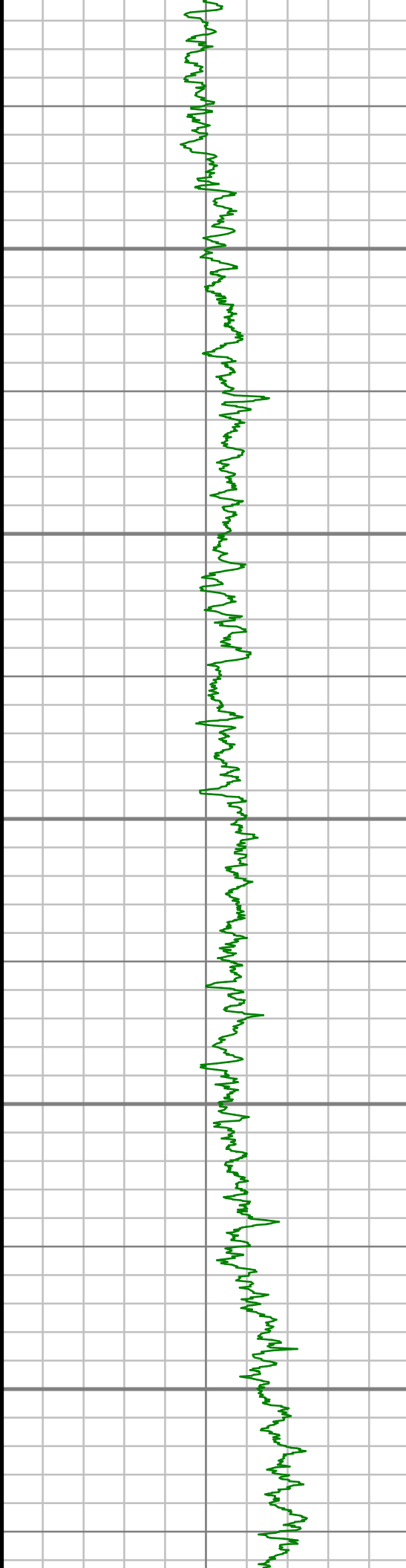
S: 60 MD: 5912.00 ft Inc: 4.10
deg Az: 200.00 deg TVD:
5844.28 ft

S: 61 MD: 6007.00 ft Inc: 3.34
deg Az: 196.96 deg TVD:
5939.08 ft

S: 62 MD: 6101.00 ft Inc: 2.54
deg Az: 175.25 deg TVD:
6032.96 ft

S: 63 MD: 6197.00 ft Inc: 1.19
deg Az: 208.06 deg TVD:
6128.91 ft

S: 64 MD: 6292.00 ft Inc: 1.30
deg Az: 252.63 deg TVD:
6223.89 ft



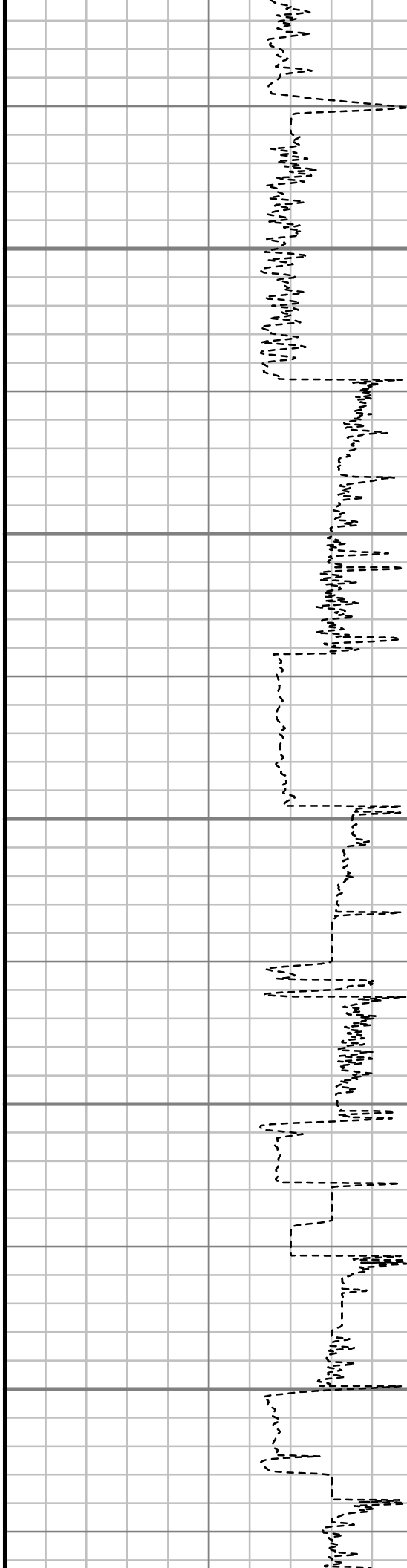
6400

6500

6600

6700

6800



S: 65 MD: 6387.00 ft Inc: 1.15
deg Az: 217.36 deg TVD:
6318.87 ft

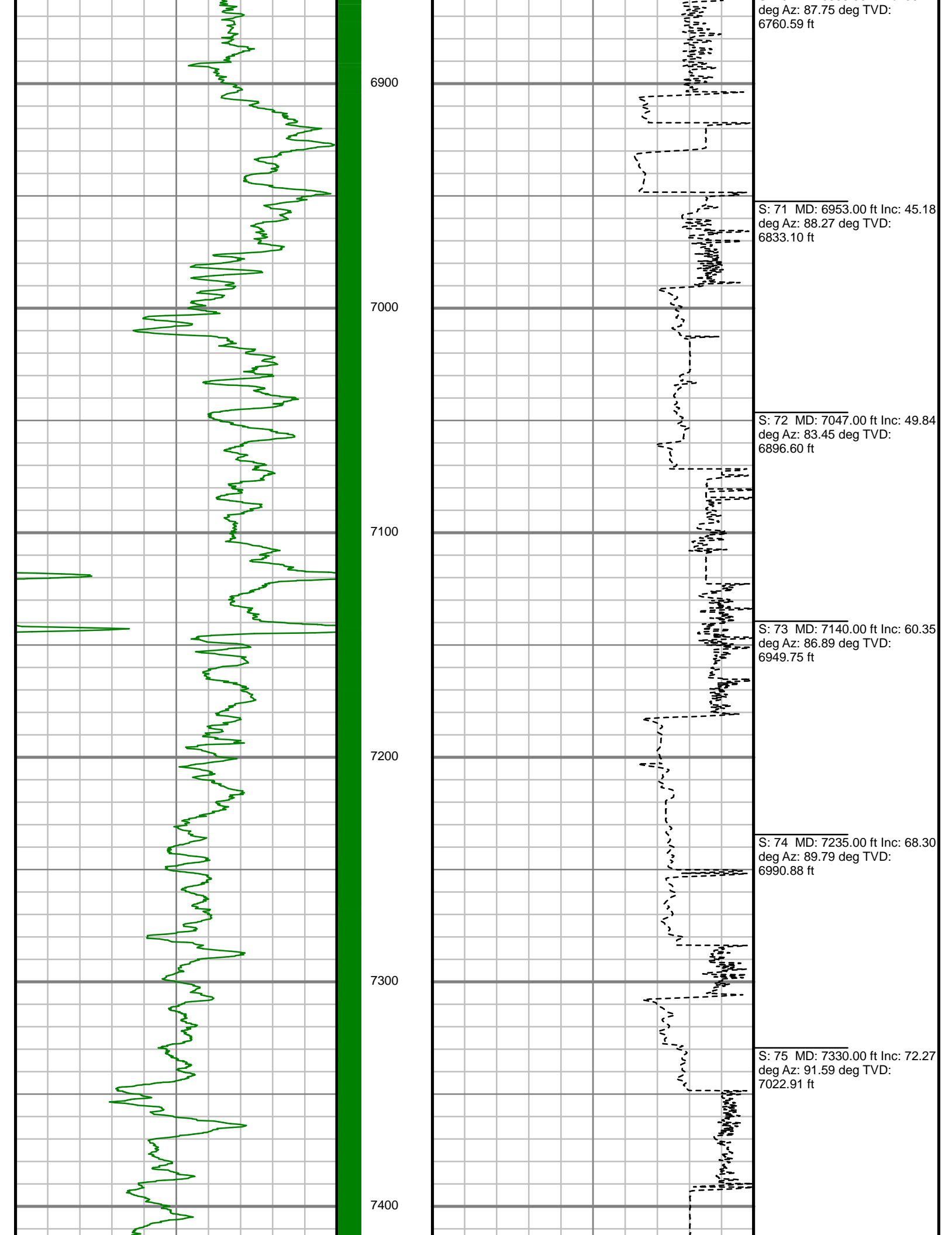
S: 66 MD: 6479.00 ft Inc: 6.19
deg Az: 90.25 deg TVD:
6410.70 ft

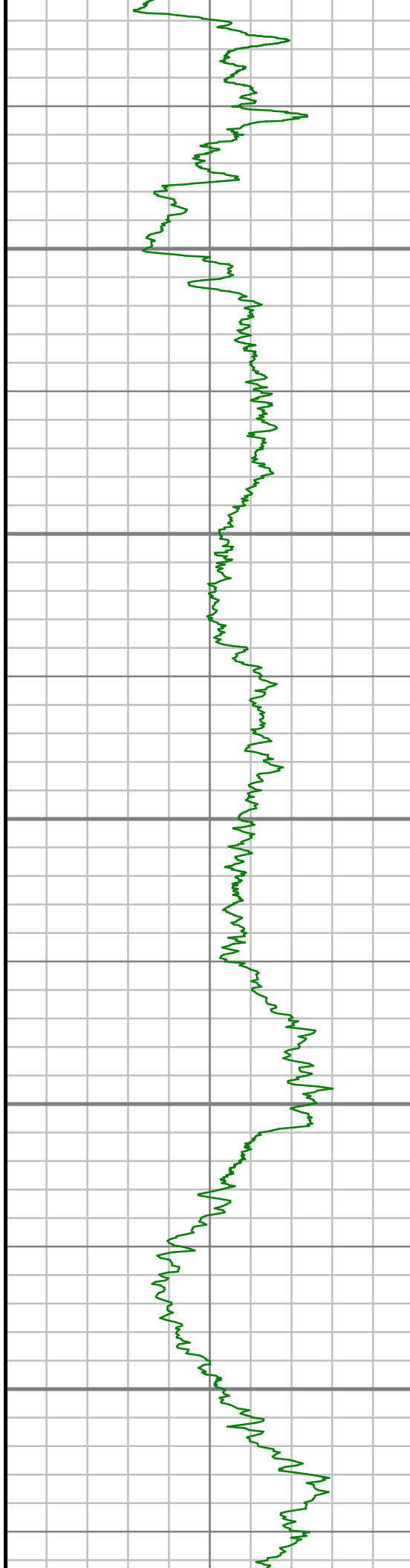
S: 67 MD: 6574.00 ft Inc: 15.46
deg Az: 84.19 deg TVD:
6503.91 ft

S: 68 MD: 6669.00 ft Inc: 21.60
deg Az: 81.23 deg TVD:
6593.95 ft

S: 69 MD: 6763.00 ft Inc: 27.41
deg Az: 82.98 deg TVD:
6679.44 ft

S: 70 MD: 6858.00 ft Inc: 35.14





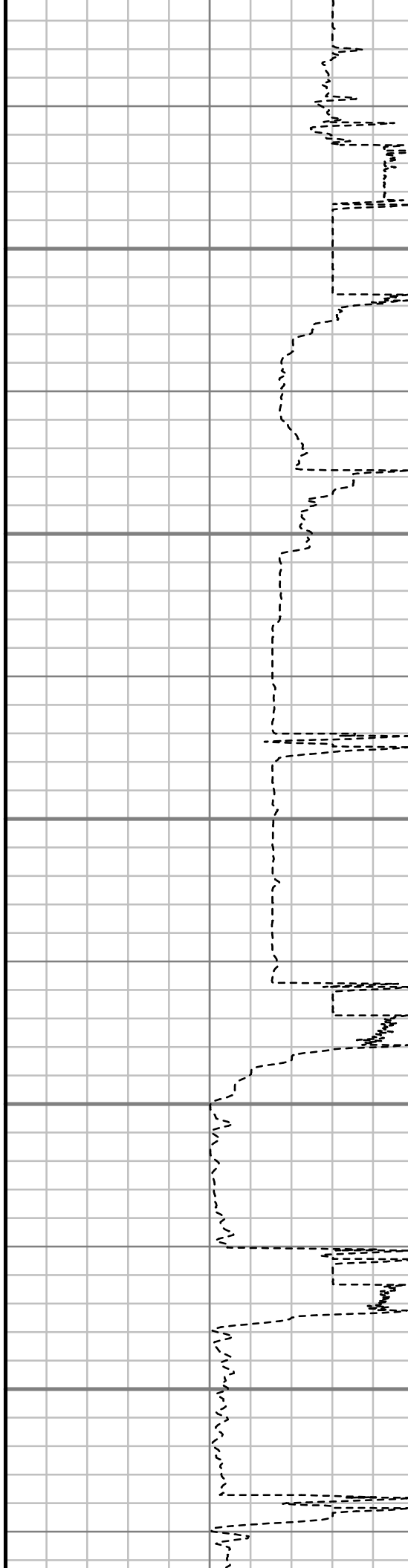
7500

7600

7700

7800

7900



S: 76 MD: 7425.00 ft Inc: 83.10
deg Az: 90.16 deg TVD:
7043.14 ft

S: 77 MD: 7458.00 ft Inc: 84.01
deg Az: 89.43 deg TVD:
7046.85 ft

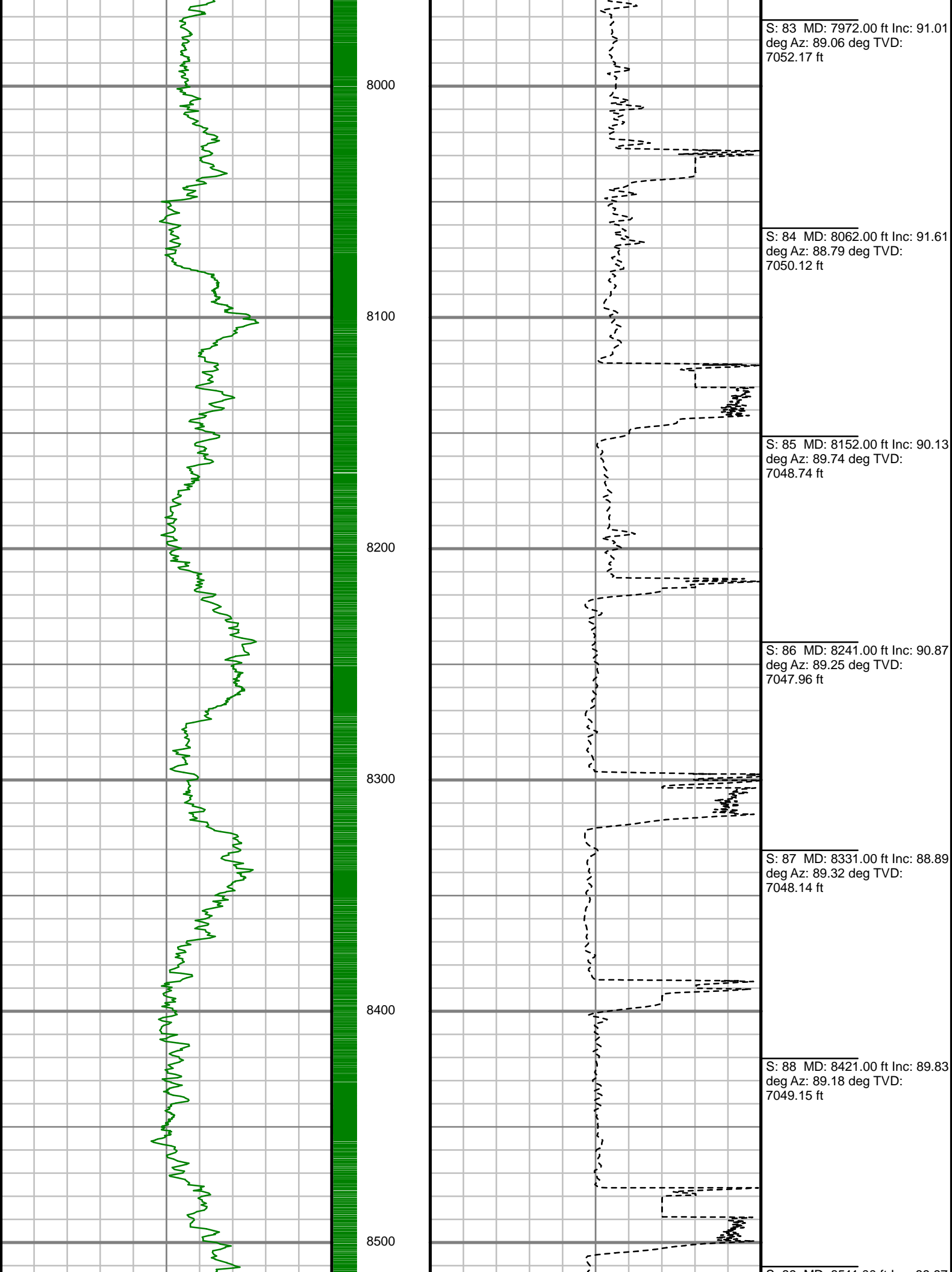
S: 78 MD: 7523.00 ft Inc: 90.20
deg Az: 86.41 deg TVD:
7050.13 ft

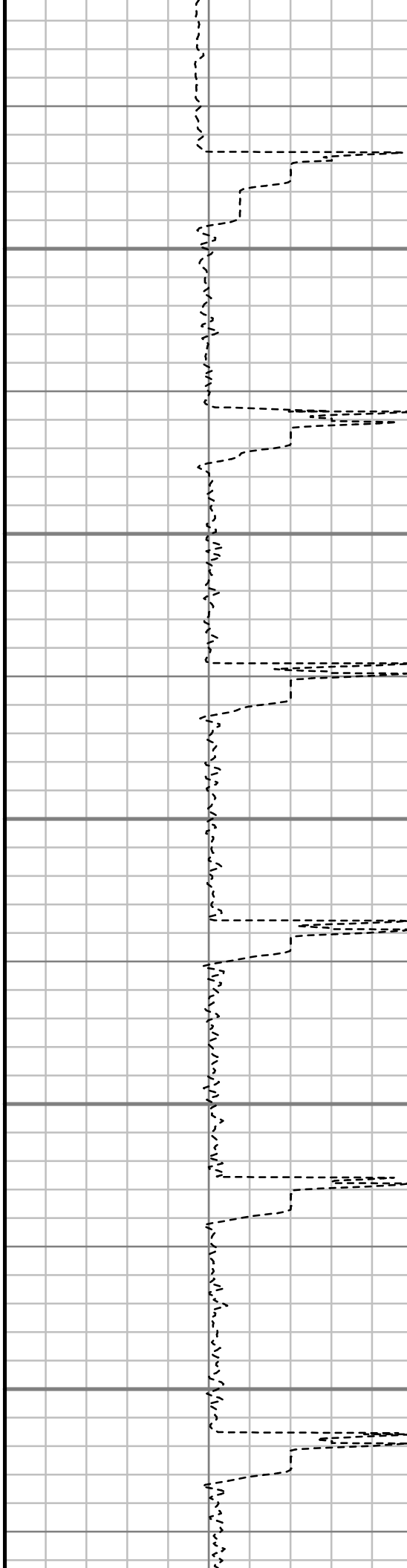
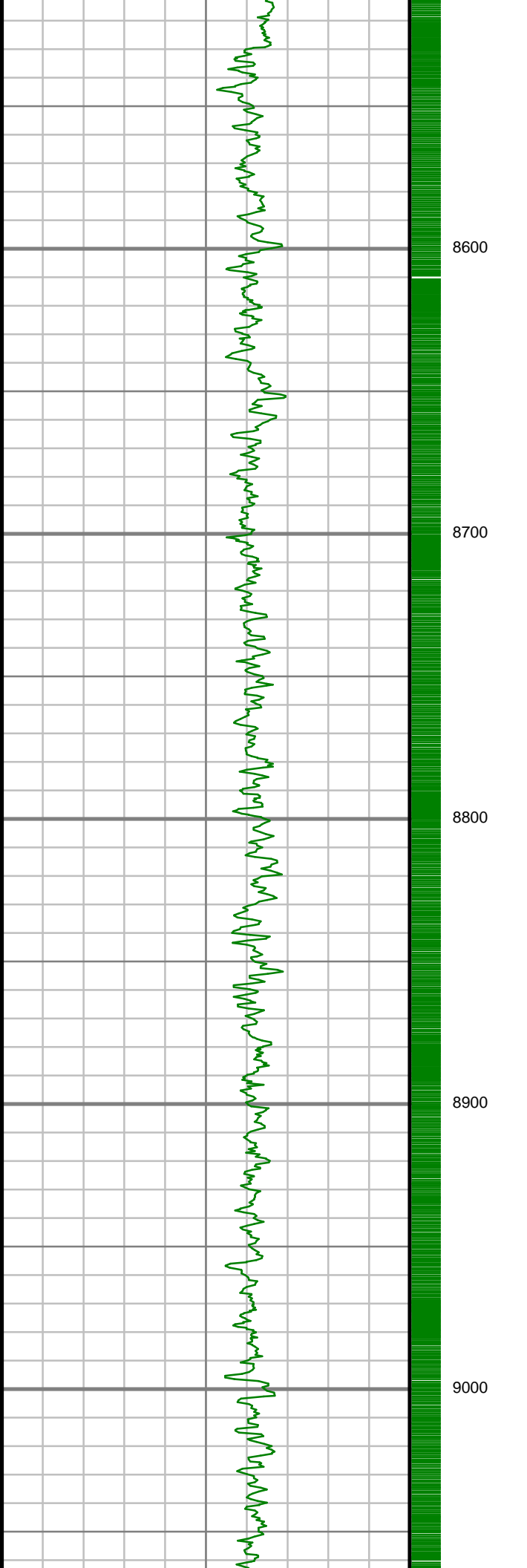
S: 79 MD: 7613.00 ft Inc: 89.90
deg Az: 87.82 deg TVD:
7050.05 ft

S: 80 MD: 7702.00 ft Inc: 89.03
deg Az: 87.95 deg TVD:
7050.88 ft

S: 81 MD: 7792.00 ft Inc: 88.69
deg Az: 88.79 deg TVD:
7052.67 ft

S: 82 MD: 7882.00 ft Inc: 90.47
deg Az: 89.44 deg TVD:
7053.33 ft





S: 89 MD: 8511.00 ft Inc: 89.97
deg Az: 90.28 deg TVD:
7049.30 ft

S: 90 MD: 8601.00 ft Inc: 90.03
deg Az: 90.27 deg TVD:
7049.30 ft

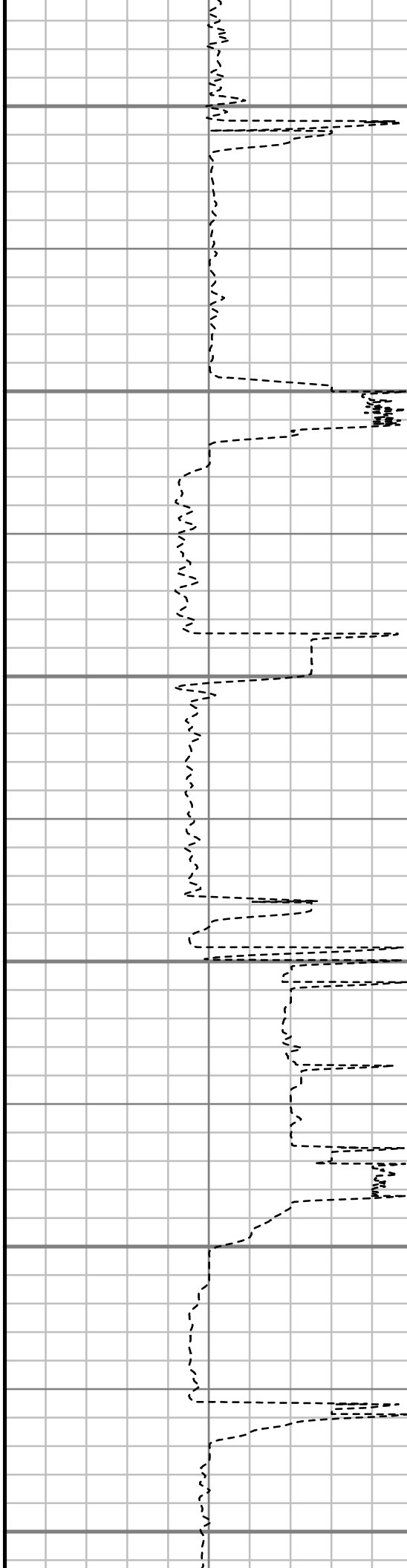
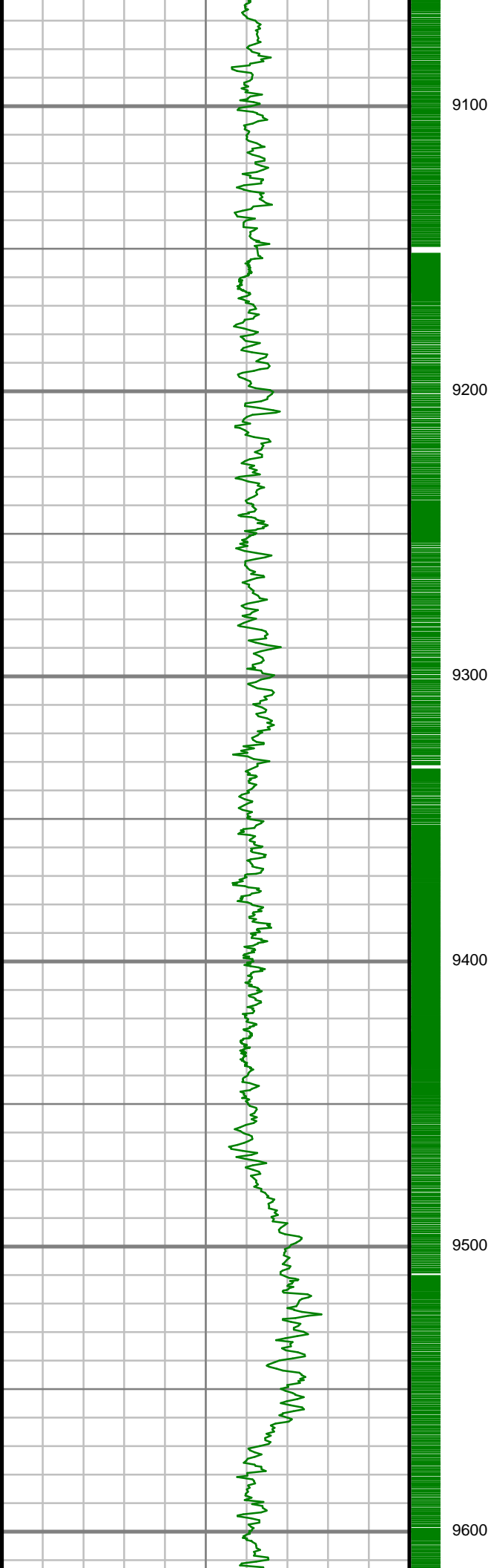
S: 91 MD: 8690.00 ft Inc: 90.00
deg Az: 90.42 deg TVD:
7049.28 ft

S: 92 MD: 8780.00 ft Inc: 90.07
deg Az: 90.34 deg TVD:
7049.22 ft

S: 93 MD: 8870.00 ft Inc: 89.87
deg Az: 90.40 deg TVD:
7049.28 ft

S: 94 MD: 8960.00 ft Inc: 89.97
deg Az: 89.80 deg TVD:
7049.41 ft

S: 95 MD: 9050.00 ft Inc: 89.83
deg Az: 89.54 deg TVD:



7049.57 ft

S: 96 MD: 9140.00 ft Inc: 89.83
deg Az: 89.07 deg TVD:
7049.83 ft

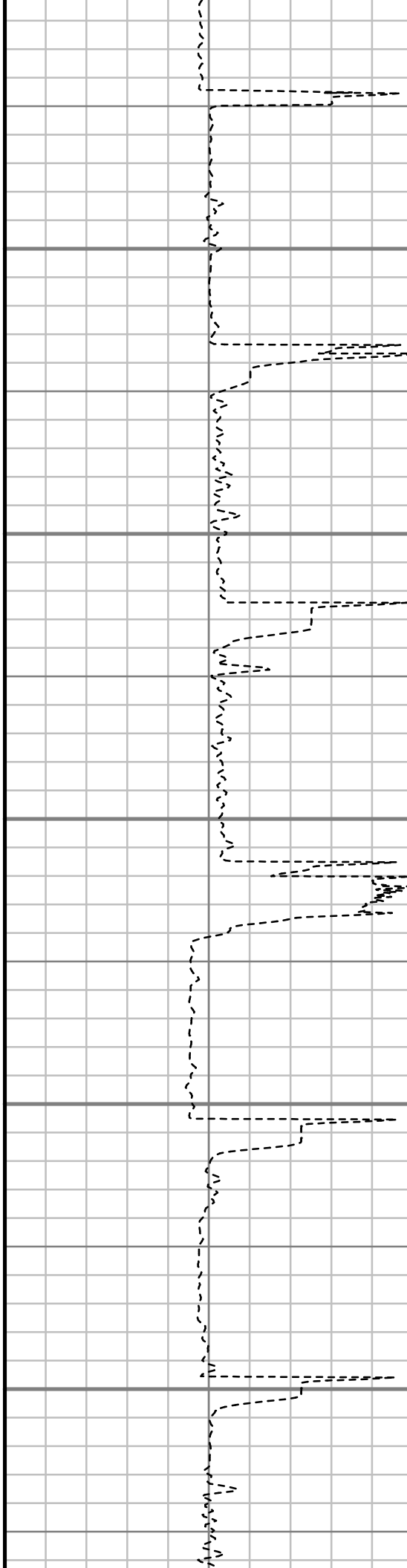
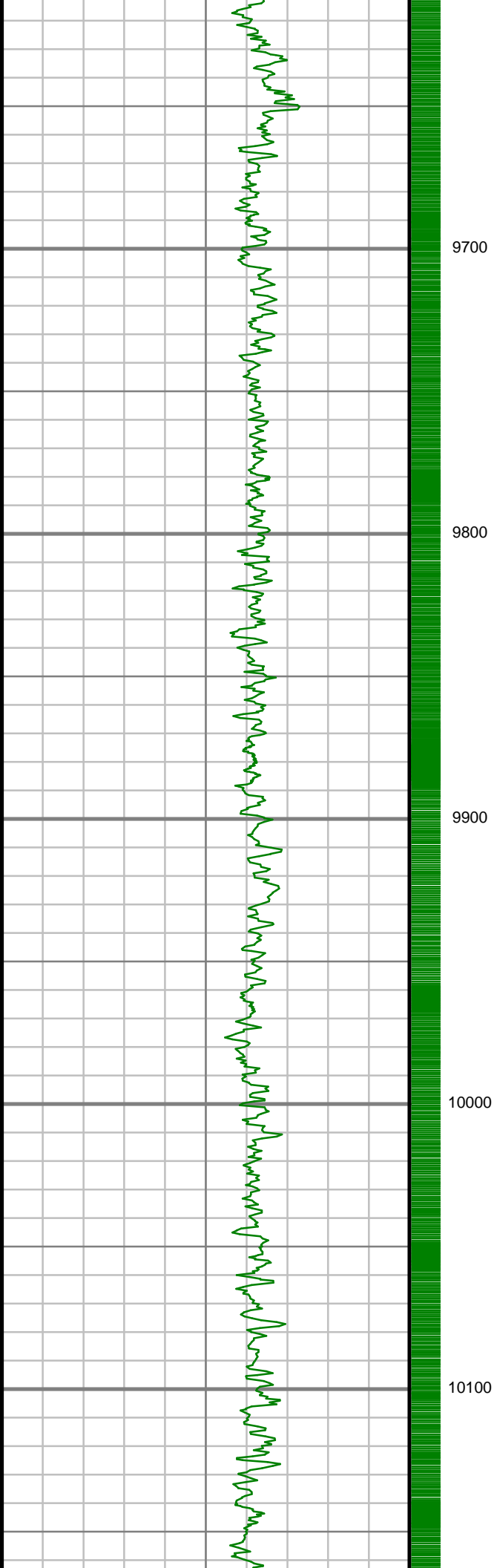
S: 97 MD: 9230.00 ft Inc: 89.70
deg Az: 90.37 deg TVD:
7050.20 ft

S: 98 MD: 9319.00 ft Inc: 89.66
deg Az: 89.95 deg TVD:
7050.70 ft

S: 99 MD: 9409.00 ft Inc: 89.66
deg Az: 89.16 deg TVD:
7051.22 ft

S: 100 MD: 9499.00 ft Inc:
90.23 deg Az: 91.19 deg TVD:
7051.30 ft

S: 101 MD: 9589.00 ft Inc:
89.43 deg Az: 90.15 deg TVD:
7051.57 ft



S: 102 MD: 9679.00 ft Inc:
89.66 deg Az: 90.06 deg TVD:
7052.28 ft

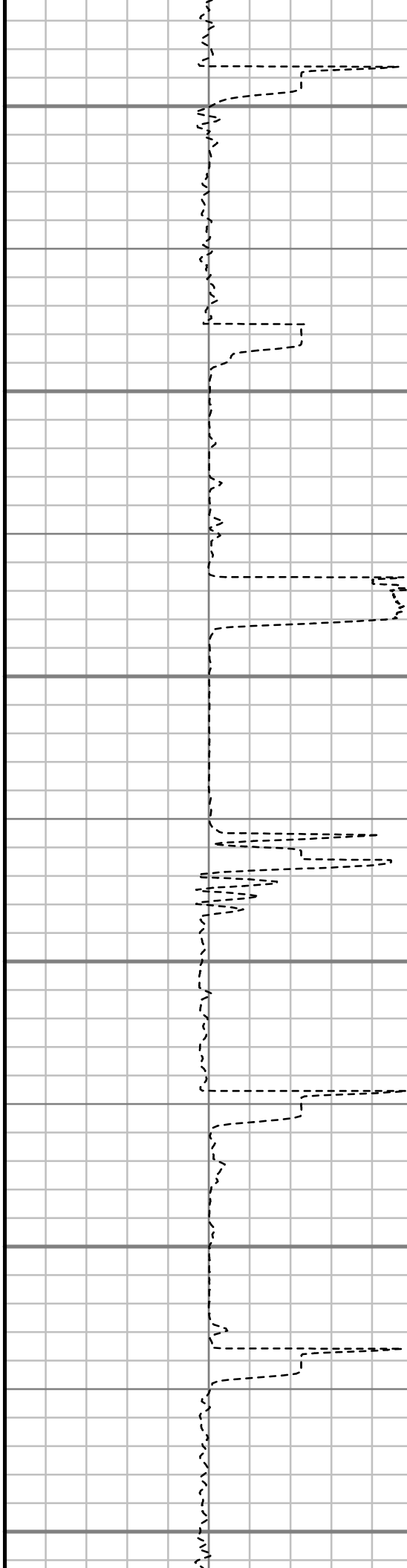
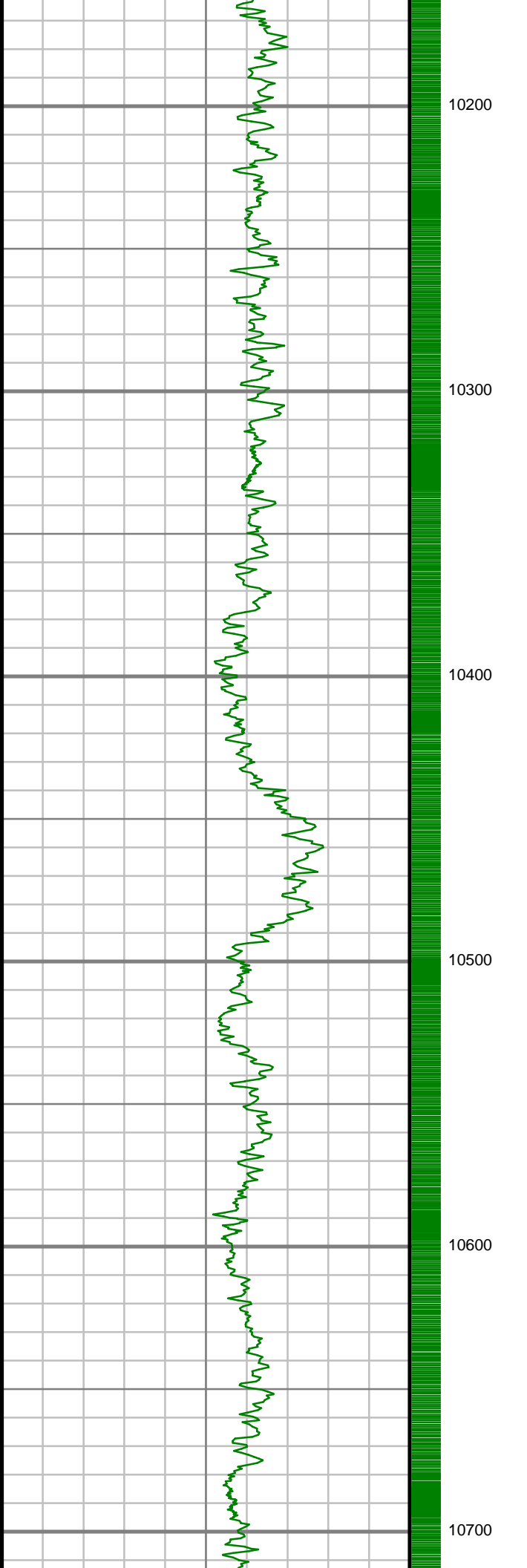
S: 103 MD: 9769.00 ft Inc:
89.90 deg Az: 89.86 deg TVD:
7052.62 ft

S: 104 MD: 9859.00 ft Inc:
89.97 deg Az: 88.88 deg TVD:
7052.73 ft

S: 105 MD: 9949.00 ft Inc:
89.60 deg Az: 90.49 deg TVD:
7053.07 ft

S: 106 MD: 10038.00 ft Inc:
90.03 deg Az: 90.01 deg TVD:
7053.36 ft

S: 107 MD: 10128.00 ft Inc:
89.73 deg Az: 89.61 deg TVD:
7053.54 ft



S: 108 MD: 10218.00 ft Inc:
90.03 deg Az: 89.29 deg TVD:
7053.72 ft

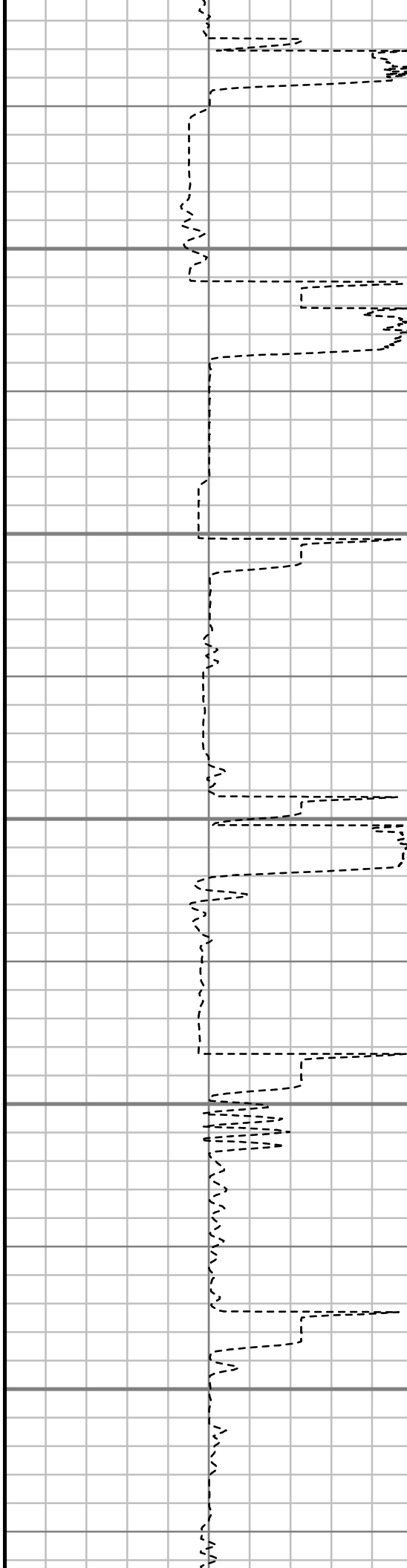
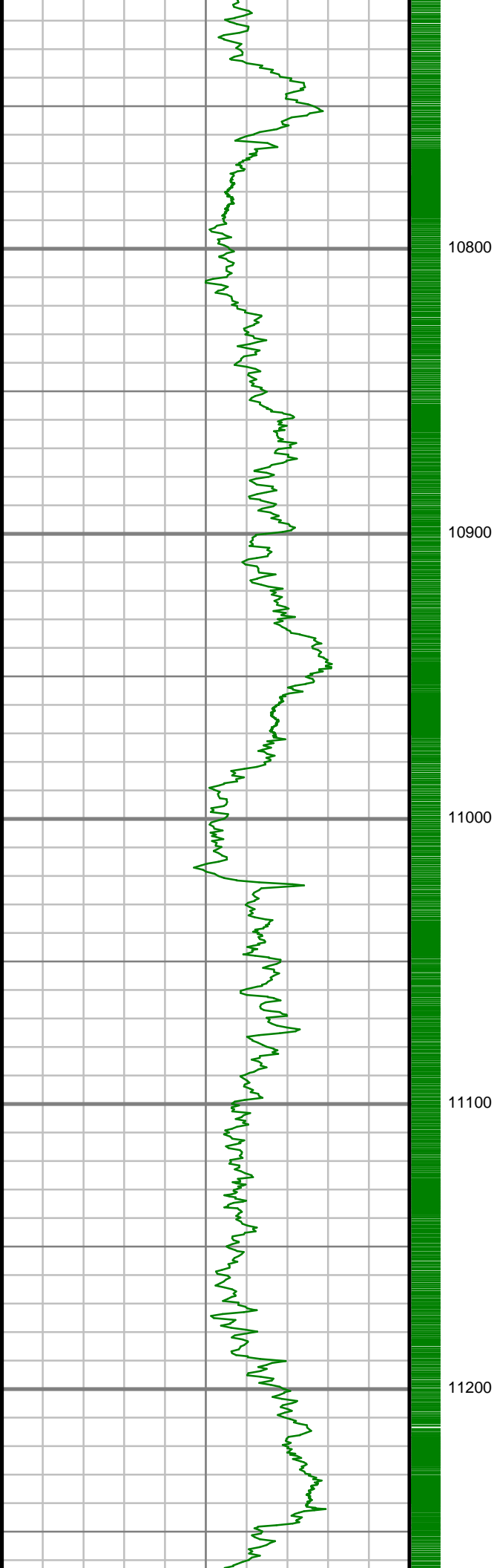
S: 109 MD: 10308.00 ft Inc:
89.93 deg Az: 88.70 deg TVD:
7053.75 ft

S: 110 MD: 10398.00 ft Inc:
89.93 deg Az: 89.71 deg TVD:
7053.85 ft

S: 111 MD: 10488.00 ft Inc:
90.87 deg Az: 89.93 deg TVD:
7053.22 ft

S: 112 MD: 10577.00 ft Inc:
90.37 deg Az: 90.72 deg TVD:
7052.26 ft

S: 113 MD: 10667.00 ft Inc:
90.47 deg Az: 92.36 deg TVD:
7051.60 ft



S: 114 MD: 10757.00 ft Inc:
88.69 deg Az: 92.78 deg TVD:
7052.26 ft

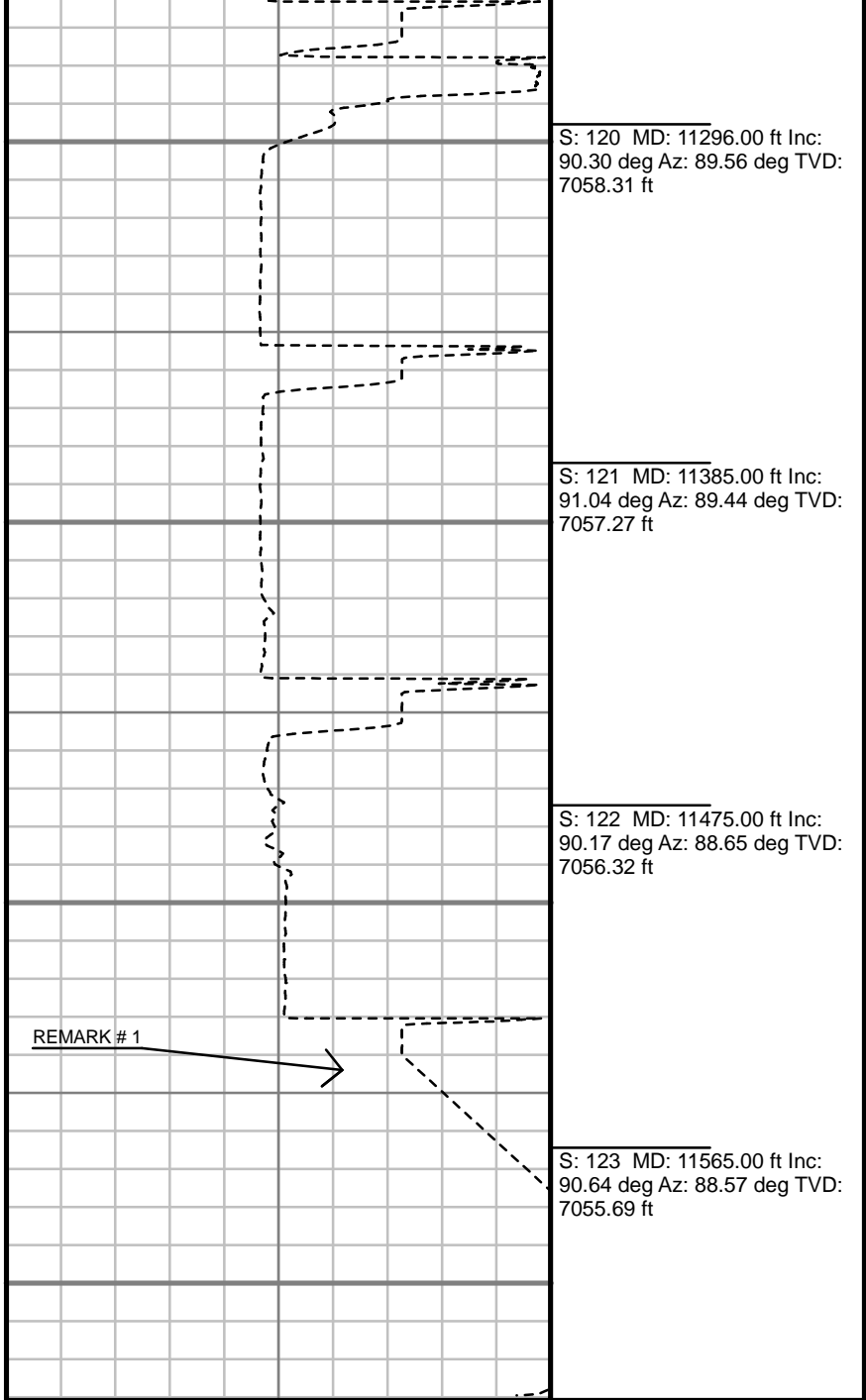
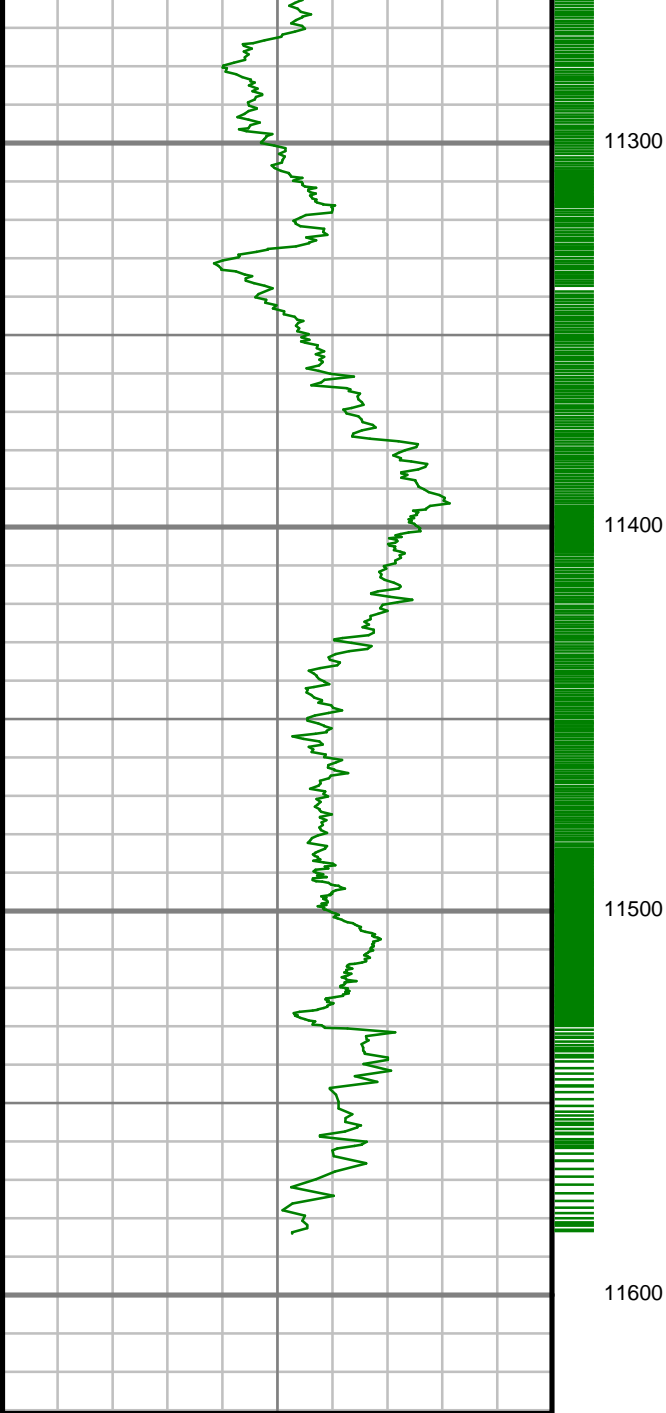
S: 115 MD: 10847.00 ft Inc:
89.16 deg Az: 91.82 deg TVD:
7053.95 ft

S: 116 MD: 10937.00 ft Inc:
89.09 deg Az: 92.69 deg TVD:
7055.32 ft

S: 117 MD: 11026.00 ft Inc:
89.46 deg Az: 90.61 deg TVD:
7056.44 ft

S: 118 MD: 11116.00 ft Inc:
89.80 deg Az: 89.80 deg TVD:
7057.02 ft

S: 119 MD: 11206.00 ft Inc:
89.13 deg Az: 89.29 deg TVD:
7057.86 ft



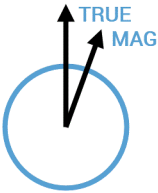
Rate of Penetration (ROP)		Comments
1000	0	
Unit = ft/hr		

CUSTOMER SYNERGY RESOURCES
CORPERATION
PROJECT SRC VISTA D-2N-C
FIELD WATTENBERG

WELL INFORMATION
Lat/Long 40° 20' 29.803" N, 104° 58' 44.058" W
Northing 1,367,596.85 ft
Easting 3,145,255.22 ft
UWI 05-123-41058

MAP INFORMATION
North Reference True North
Grid Correction
System US State Plane 1983
Datum North American Datum 1983 (GRS 1980)
Map Zone Colorado North: 0501

VERTICAL SECTION REFERENCE
+N/-S 0 ft
+E/-W 0 ft
Proposal Direction 89.39°
Calculation Method Minimum Curvature



GEOMAGNETIC REFERENCE INFORMATION
Local Gravity: 999.058 mG [computed]

MD	MODEL	DATE	DECLINATION	MAG TO TRUE
0-11565 ft	BGGM2015	17 Jan 2016	8.62°	add 8.62°

WELL NOTES
OPERATORS
C.COLLINS, S.BRANT

MD	Inc	Azim	TVD	VS	+N/-S	+E/-W	DLS	Course Length
ft	deg	deg	ft	ft	ft	ft	°/100ft	ft
0.00	0.00	0.00	0.00	0.00	0.00	0.00	Invalid	Invalid
164.00	0.32	182.49	164.00	-0.02	-0.46	-0.02	0.20	164.00
255.00	0.99	193.44	254.99	-0.23	-1.48	-0.21	0.75	91.00
345.00	2.48	200.79	344.95	-1.13	-4.05	-1.09	1.67	90.00
437.00	4.89	198.40	436.75	-3.13	-9.64	-3.03	2.62	92.00
527.00	7.32	195.27	526.24	-5.95	-18.81	-5.75	2.72	90.00
617.00	10.29	197.62	615.16	-10.04	-32.00	-9.70	3.32	90.00
750.00	9.14	192.20	746.26	-16.09	-53.65	-15.52	1.10	133.00
811.00	9.20	192.66	806.48	-18.29	-63.14	-17.62	0.15	61.00
905.00	9.45	192.49	899.24	-21.76	-78.01	-20.93	0.27	94.00
998.00	9.46	193.50	990.97	-25.36	-92.90	-24.37	0.18	93.00
1093.00	9.62	194.26	1084.66	-29.30	-108.18	-28.15	0.21	95.00
1188.00	9.33	193.11	1178.36	-33.16	-123.37	-31.85	0.36	95.00
1471.00	8.92	190.77	1457.79	-42.92	-167.25	-41.14	0.20	283.00
1566.00	8.64	202.14	1551.68	-47.13	-181.09	-45.21	1.85	95.00
1660.00	9.65	203.23	1644.48	-53.05	-194.87	-50.98	1.10	94.00
1754.00	9.10	200.27	1737.23	-58.88	-209.09	-56.66	0.78	94.00
1849.00	8.81	200.91	1831.07	-64.23	-222.94	-61.86	0.32	95.00

MD	Inc	Azim	TVD	VS	+N/-S	+E/-W	DLS	Course Length
ft	deg	deg	ft	ft	ft	ft	°/100ft	ft
1943.00	9.87	199.59	1923.82	-69.65	-237.25	-67.13	1.15	94.00
2038.00	9.11	197.80	2017.52	-74.84	-252.09	-72.16	0.85	95.00
2131.00	8.75	199.21	2109.39	-79.56	-265.78	-76.74	0.46	93.00
2226.00	8.98	196.45	2203.26	-84.19	-279.71	-81.21	0.51	95.00
2329.00	8.40	194.01	2305.08	-88.44	-294.72	-85.31	0.66	103.00
2423.00	9.34	194.61	2397.95	-92.18	-308.76	-88.90	1.01	94.00
2517.00	9.05	193.02	2490.74	-95.92	-323.34	-92.49	0.41	94.00
2610.00	8.00	190.74	2582.72	-98.92	-336.82	-95.34	1.19	93.00
2703.00	8.57	184.53	2674.75	-100.81	-350.08	-97.09	1.14	93.00
2796.00	9.38	185.98	2766.61	-102.30	-364.52	-98.43	0.90	93.00
2890.00	9.84	192.40	2859.29	-104.99	-379.98	-100.95	1.24	94.00
2982.00	9.05	193.62	2950.04	-108.54	-394.70	-104.35	0.89	92.00
3075.00	9.60	195.95	3041.82	-112.55	-409.26	-108.20	0.71	93.00
3168.00	8.85	197.24	3133.61	-116.95	-423.55	-112.45	0.84	93.00
3261.00	8.36	198.21	3225.57	-121.33	-436.80	-116.68	0.54	93.00
3356.00	8.79	198.74	3319.50	-125.96	-450.23	-121.17	0.46	95.00
3449.00	6.56	204.36	3411.67	-130.56	-461.80	-125.65	2.53	93.00
3545.00	7.55	201.04	3506.94	-135.20	-472.68	-130.17	1.12	96.00

MD	Inc	Azim	TVD	VS	+N/-S	+E/-W	DLS	Course Length
ft	deg	deg	ft	ft	ft	ft	°/100ft	ft
3638.00	9.99	196.63	3598.85	-139.84	-486.11	-134.67	2.71	93.00
3732.00	10.64	192.70	3691.33	-144.26	-502.39	-138.91	1.02	94.00
3826.00	10.43	196.35	3783.75	-148.73	-519.02	-143.22	0.75	94.00
3922.00	9.60	195.36	3878.28	-153.47	-535.07	-147.78	0.88	96.00
4017.00	9.02	192.00	3972.03	-157.28	-549.99	-151.43	0.84	95.00
4111.00	10.08	192.93	4064.73	-160.81	-565.22	-154.80	1.15	94.00
4206.00	9.15	187.97	4158.39	-163.89	-580.81	-157.71	1.31	95.00
4300.00	9.54	192.58	4251.15	-166.78	-595.81	-160.45	0.90	94.00
4395.00	10.26	194.34	4344.73	-170.76	-611.69	-164.26	0.81	95.00
4490.00	9.73	195.20	4438.29	-175.13	-627.63	-168.46	0.58	95.00
4584.00	9.20	192.63	4531.01	-179.01	-642.63	-172.18	0.72	94.00
4679.00	9.85	194.16	4624.70	-182.82	-657.91	-175.83	0.73	95.00
4773.00	9.18	195.54	4717.41	-186.96	-672.93	-179.81	0.75	94.00
4868.00	9.90	195.60	4811.09	-191.35	-688.10	-184.03	0.76	95.00
4963.00	9.67	200.88	4904.71	-196.55	-703.42	-189.07	0.98	95.00
5057.00	10.22	196.51	4997.30	-201.90	-718.79	-194.25	0.99	94.00
5152.00	8.61	194.12	5091.02	-206.18	-733.76	-198.38	1.74	95.00
5247.00	9.05	193.06	5184.90	-209.76	-747.94	-201.81	0.50	95.00

MD ft	Inc deg	Azim deg	TVD ft	VS ft	+N/-S ft	+E/-W ft	DLS °/100ft	Course Length ft
5342.00	7.97	195.46	5278.85	-213.35	-761.56	-205.25	1.20	95.00
5437.00	8.09	192.51	5372.92	-216.69	-774.44	-208.45	0.45	95.00
5531.00	9.05	206.15	5465.88	-221.52	-787.54	-213.14	2.38	94.00
5627.00	7.49	204.72	5560.87	-227.59	-799.99	-219.09	1.64	96.00
5722.00	6.50	205.12	5655.17	-232.57	-810.48	-223.96	1.04	95.00
5817.00	5.70	202.09	5749.63	-236.73	-819.72	-228.01	0.90	95.00
5912.00	4.10	200.00	5844.28	-239.74	-827.28	-230.95	1.69	95.00
6007.00	3.34	196.96	5939.08	-241.77	-833.12	-232.92	0.83	95.00
6101.00	2.54	175.25	6032.96	-242.45	-837.81	-233.54	1.44	94.00
6197.00	1.19	208.06	6128.91	-242.77	-840.81	-233.84	1.73	96.00
6292.00	1.30	252.63	6223.89	-244.28	-842.01	-235.33	1.00	95.00
6387.00	1.15	217.36	6318.87	-245.90	-843.08	-236.94	0.80	95.00
6479.00	6.19	90.25	6410.70	-241.51	-843.84	-232.54	7.54	92.00
6574.00	15.46	84.19	6503.91	-223.74	-842.58	-214.78	9.82	95.00
6669.00	21.60	81.23	6593.95	-193.79	-838.62	-184.88	6.54	95.00
6763.00	27.41	82.98	6679.44	-155.14	-833.33	-146.27	6.22	94.00
6858.00	35.14	87.75	6760.59	-106.00	-829.58	-97.17	8.54	95.00
6953.00	45.18	88.27	6833.10	-44.82	-827.49	-36.02	10.57	95.00

MD ft	Inc deg	Azim deg	TVD ft	VS ft	+N/-S ft	+E/-W ft	DLS °/100ft	Course Length ft
7047.00	49.84	83.45	6896.60	24.30	-822.38	33.05	6.23	94.00
7140.00	60.35	86.89	6949.75	100.24	-816.12	108.94	11.70	93.00
7235.00	68.30	89.79	6990.88	185.77	-813.72	194.45	8.81	95.00
7330.00	72.27	91.59	7022.91	275.16	-814.82	283.85	4.54	95.00
7425.00	83.10	90.16	7043.14	367.80	-816.21	376.52	11.49	95.00
7458.00	84.01	89.43	7046.85	400.59	-816.10	409.31	3.54	33.00
7523.00	90.20	86.41	7050.13	465.45	-813.74	474.14	10.59	65.00
7613.00	89.90	87.82	7050.05	555.38	-809.21	564.02	1.60	90.00
7702.00	89.03	87.95	7050.88	644.34	-805.92	652.96	0.99	89.00
7792.00	88.69	88.79	7052.67	734.31	-803.36	742.90	1.01	90.00
7882.00	90.47	89.44	7053.33	824.30	-801.97	832.89	2.10	90.00
7972.00	91.01	89.06	7052.17	914.29	-800.80	922.87	0.73	90.00
8062.00	91.61	88.79	7050.12	1004.27	-799.11	1012.83	0.74	90.00
8152.00	90.13	89.74	7048.74	1094.25	-797.96	1102.81	1.95	90.00
8241.00	90.87	89.25	7047.96	1183.25	-797.18	1191.80	0.99	89.00
8331.00	88.89	89.32	7048.14	1273.24	-796.05	1281.79	2.20	90.00
8421.00	89.83	89.18	7049.15	1363.24	-794.87	1371.78	1.06	90.00
8511.00	89.97	90.28	7049.30	1453.23	-794.44	1461.77	1.23	90.00

MD	Inc	Azim	TVD	VS	+N/-S	+E/-W	DLS	Course Length
ft	deg	deg	ft	ft	ft	ft	°/100ft	ft
8601.00	90.03	90.27	7049.30	1543.22	-794.87	1551.77	0.07	90.00
8690.00	90.00	90.42	7049.28	1632.21	-795.42	1640.77	0.17	89.00
8780.00	90.07	90.34	7049.22	1722.20	-796.01	1730.77	0.12	90.00
8870.00	89.87	90.40	7049.28	1812.18	-796.59	1820.77	0.23	90.00
8960.00	89.97	89.80	7049.41	1902.18	-796.76	1910.77	0.68	90.00
9050.00	89.83	89.54	7049.57	1992.17	-796.24	2000.76	0.33	90.00
9140.00	89.83	89.07	7049.83	2082.17	-795.15	2090.76	0.53	90.00
9230.00	89.70	90.37	7050.20	2172.17	-794.71	2180.75	1.45	90.00
9319.00	89.66	89.95	7050.70	2261.16	-794.95	2269.75	0.48	89.00
9409.00	89.66	89.16	7051.22	2351.16	-794.25	2359.75	0.88	90.00
9499.00	90.23	91.19	7051.30	2441.14	-794.52	2449.74	2.35	90.00
9589.00	89.43	90.15	7051.57	2531.12	-795.58	2539.73	1.47	90.00
9679.00	89.66	90.06	7052.28	2621.11	-795.74	2629.73	0.28	90.00
9769.00	89.90	89.86	7052.62	2711.10	-795.69	2719.73	0.34	90.00
9859.00	89.97	88.88	7052.73	2801.10	-794.69	2809.72	1.10	90.00
9949.00	89.60	90.49	7053.07	2891.10	-794.19	2899.72	1.84	90.00
10038.00	90.03	90.01	7053.36	2980.09	-794.57	2988.72	0.73	89.00
10128.00	89.73	89.61	7053.54	3070.08	-794.27	3078.71	0.55	90.00

MD	Inc	Azim	TVD	VS	+N/-S	+E/-W	DLS	Course Length
ft	deg	deg	ft	ft	ft	ft	°/100ft	ft
10218.00	90.03	89.29	7053.72	3160.08	-793.40	3168.71	0.49	90.00
10308.00	89.93	88.70	7053.75	3250.08	-791.82	3258.70	0.66	90.00
10398.00	89.93	89.71	7053.85	3340.08	-790.57	3348.69	1.12	90.00
10488.00	90.87	89.93	7053.22	3430.07	-790.28	3438.68	1.07	90.00
10577.00	90.37	90.72	7052.26	3519.06	-790.79	3527.67	1.05	89.00
10667.00	90.47	92.36	7051.60	3608.99	-793.22	3617.64	1.83	90.00
10757.00	88.69	92.78	7052.26	3698.84	-797.26	3707.54	2.03	90.00
10847.00	89.16	91.82	7053.95	3788.71	-800.86	3797.45	1.19	90.00
10937.00	89.09	92.69	7055.32	3878.58	-804.40	3887.37	0.98	90.00
11026.00	89.46	90.61	7056.44	3967.50	-806.97	3976.32	2.38	89.00
11116.00	89.80	89.80	7057.02	4057.49	-807.29	4066.32	0.98	90.00
11206.00	89.13	89.29	7057.86	4147.49	-806.57	4156.31	0.94	90.00
11296.00	90.30	89.56	7058.31	4237.48	-805.67	4246.30	1.34	90.00
11385.00	91.04	89.44	7057.27	4326.48	-804.89	4335.29	0.84	89.00
11475.00	90.17	88.65	7056.32	4416.47	-803.39	4425.27	1.30	90.00
11565.00	90.64	88.57	7055.69	4506.46	-801.21	4515.24	0.53	90.00

2" = 100' FEET MD