

CPX PICEANCE HOLDINGS LLC

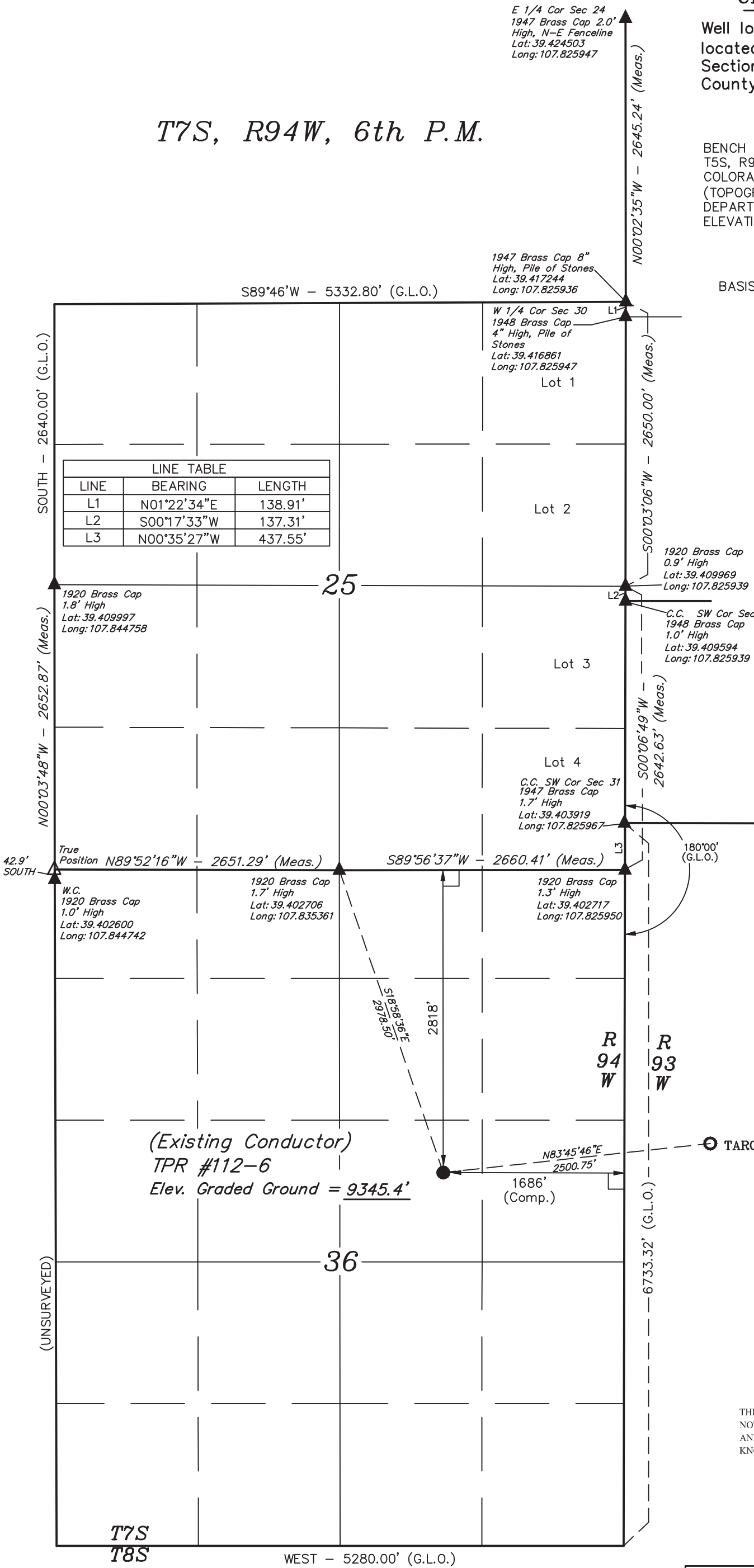
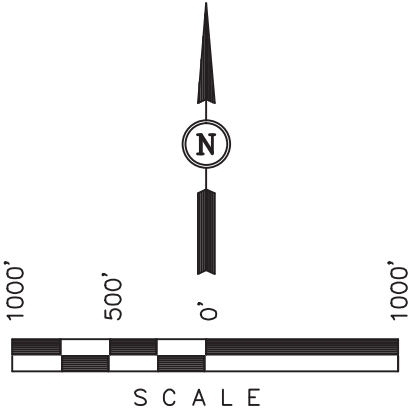
Well location, TPR #112-6 (SURFACE LOCATION), located as shown in the SW 1/4 NE 1/4 of Section 36, T7S, R94W, 6th P.M., Garfield County, Colorado.

BASIS OF ELEVATION

BENCH MARK LOCATED IN THE NE 1/4 OF SECTION 36, T5S, R93W, 6th P.M. TAKEN FROM THE RIFLE QUADRANGLE, COLORADO, GARFIELD COUNTY, 7.5 MINUTE SERIES (TOPOGRAPHICAL MAP) PUBLISHED BY THE UNITED STATES DEPARTMENT OF THE INTERIOR, GEOLOGICAL SURVEY. SAID ELEVATION IS MARKED AS BEING 5546.19 FEET.

BASIS OF BEARINGS

BASIS OF BEARINGS IS A G.P.S. OBSERVATION.



SURFACE USE OF LOCATION IS GRAZING, VEGETATION CONSISTS MAINLY OF PINE TREE & NATIVE GRASSES.

CERTIFICATE

THIS IS TO CERTIFY THAT THE ABOVE PLAT WAS PREPARED FROM FIELD NOTES OF ACTUAL SURVEYS MADE BY ME OR UNDER MY SUPERVISION AND THAT THE SAME ARE TRUE AND CORRECT TO THE BEST OF MY KNOWLEDGE AND BELIEF.

REGISTERED LAND SURVEYOR
REGISTRATION NO. 19120
STATE OF COLORADO 07-13-16

REV: 4 07-13-16 C.D.L. (COMPANY NAME CHANGE)

UINTAH ENGINEERING & LAND SURVEYING
85 SOUTH 200 EAST - VERNAL, UTAH 84078
(435) 789-1017

SCALE 1" = 1000'	DATE SURVEYED: 04-18-08	DATE DRAWN: 05-15-08
PARTY B.J. D.R.B.	REFERENCES G.L.O. PLAT	
WEATHER COOL	FILE CPX PICEANCE HOLDINGS LLC	

PDOP = 3.4
NAD 83 (SURFACE LOCATION)
LATITUDE = 39°23'41.92" (39.394978)
LONGITUDE = 107°49'54.94" (107.831928)
NAD 27 (SURFACE LOCATION)
LATITUDE = 39°23'41.99" (39.394997)
LONGITUDE = 107°49'52.71" (107.831308)
STATE PLANE NAD 83 (CO. CENTRAL)
N: 1577208.71 E: 2341056.74
STATE PLANE NAD 27 (CO. CENTRAL)
N: 577200.26 E: 1341215.23

LEGEND:

- └─┘ = 90° SYMBOL
- = PROPOSED WELL HEAD.
- = TARGET BOTTOM HOLE.
- ▲ = SECTION CORNERS LOCATED. (NAD 83)

CPX PICEANCE HOLDINGS LLC

Well location, TPR #112-6 (TARGET BOTTOM HOLE), located as shown in Lot 17 of Section 6, T8S, R93W, 6th P.M., Garfield County, Colorado.

BASIS OF ELEVATION

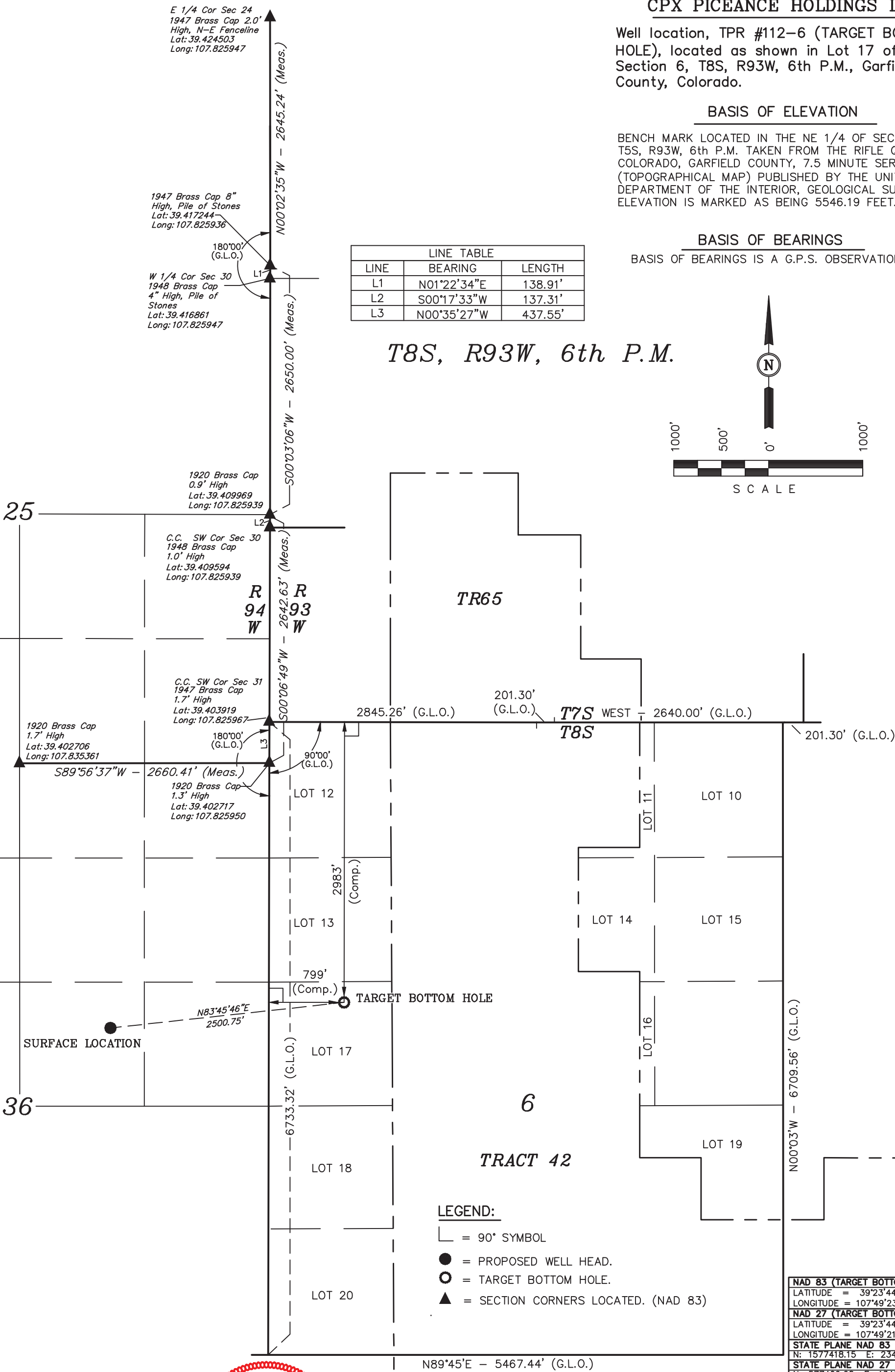
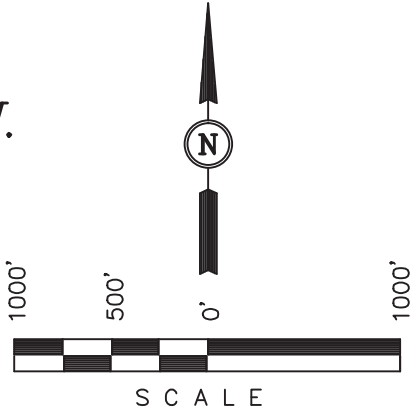
BENCH MARK LOCATED IN THE NE 1/4 OF SECTION 36, T5S, R93W, 6th P.M. TAKEN FROM THE RIFLE QUADRANGLE, COLORADO, GARFIELD COUNTY, 7.5 MINUTE SERIES (TOPOGRAPHICAL MAP) PUBLISHED BY THE UNITED STATES DEPARTMENT OF THE INTERIOR, GEOLOGICAL SURVEY. SAID ELEVATION IS MARKED AS BEING 5546.19 FEET.

BASIS OF BEARINGS

BASIS OF BEARINGS IS A G.P.S. OBSERVATION.

LINE TABLE		
LINE	BEARING	LENGTH
L1	N01°22'34"E	138.91'
L2	S00°17'33"W	137.31'
L3	N00°35'27"W	437.55'

T8S, R93W, 6th P.M.



LEGEND:

- 90° SYMBOL
- PROPOSED WELL HEAD.
- TARGET BOTTOM HOLE.
- SECTION CORNERS LOCATED. (NAD 83)

NAD 83 (TARGET BOTTOM HOLE)	
LATITUDE	= 39°23'44.62" (39.395728)
LONGITUDE	= 107°49'23.29" (107.823136)
NAD 27 (TARGET BOTTOM HOLE)	
LATITUDE	= 39°23'44.69" (39.395747)
LONGITUDE	= 107°49'21.06" (107.822517)
STATE PLANE NAD 83 (CO. CENTRAL)	
N	= 1577418.15 E: 2343547.48
STATE PLANE NAD 27 (CO. CENTRAL)	
N	= 577409.68 E: 1343705.92

CERTIFICATE

THIS IS TO CERTIFY THAT THE ABOVE PLAT WAS PREPARED FROM FIELD NOTES OF ACTUAL SURVEYS MADE BY ME OR UNDER MY SUPERVISION AND THAT THE SAME ARE TRUE AND CORRECT TO THE BEST OF MY KNOWLEDGE AND BELIEF.

REGISTERED LAND SURVEYOR
REGISTRATION NO. 38130
STATE OF COLORADO

REV: 5 07-13-16 C.D.L. (COMPANY NAME CHANGE)

UINTAH ENGINEERING & LAND SURVEYING
85 SOUTH 200 EAST - VERNAL, UTAH 84078
(435) 789-1017

SCALE 1" = 1000'	DATE SURVEYED: 04-18-08	DATE DRAWN: 05-15-08
PARTY B.J. D.R.B.	REFERENCES G.L.O. PLAT	
WEATHER COOL	FILE CPX PICEANCE HOLDINGS LLC	