

CPX PICEANCE HOLDINGS LLC

Well location, TPR #112-6 (TARGET BOTTOM HOLE), located as shown in Lot 17 of Section 6, T8S, R93W, 6th P.M., Garfield County, Colorado.

BASIS OF ELEVATION

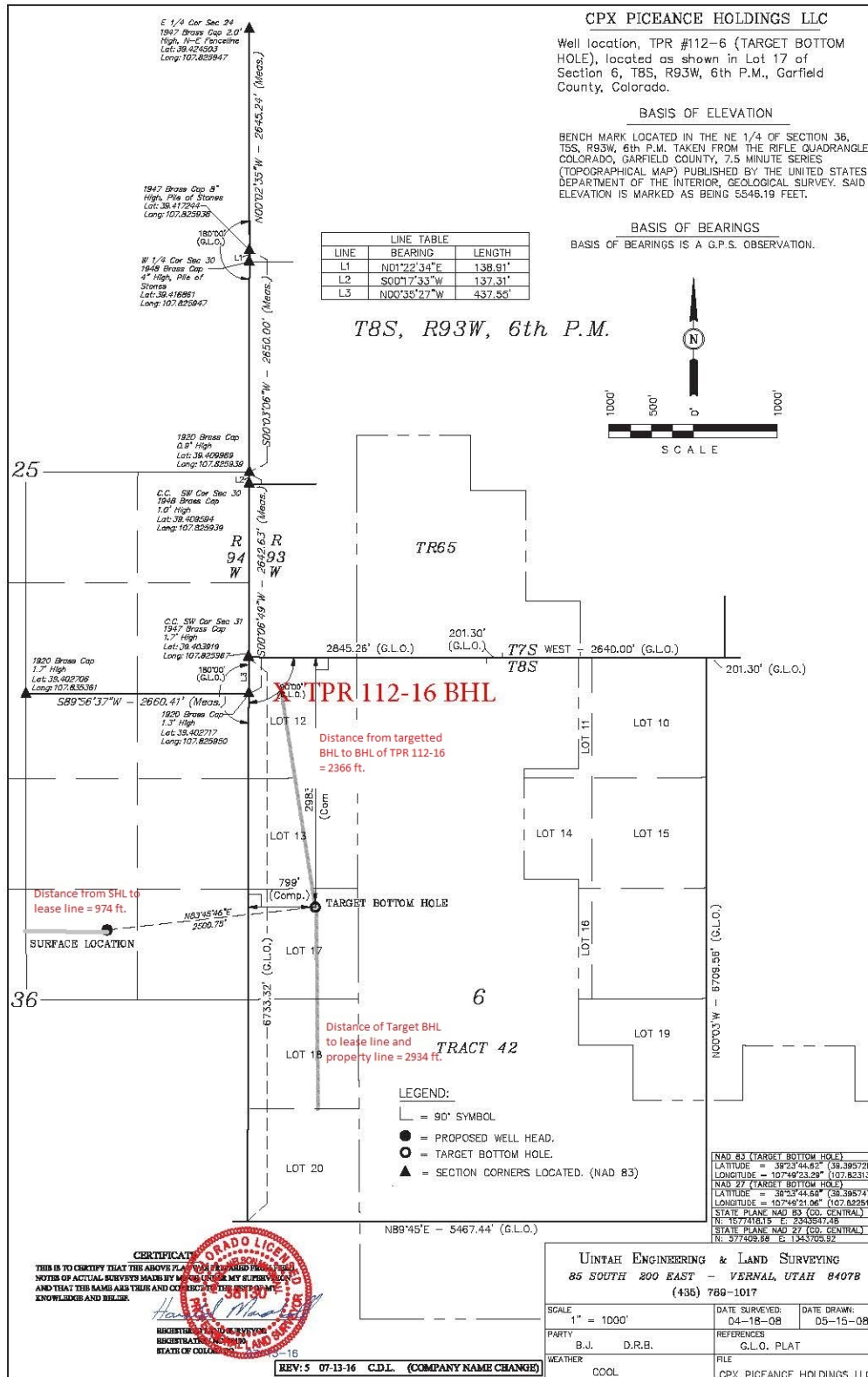
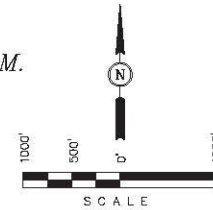
BENCH MARK LOCATED IN THE NE 1/4 OF SECTION 36, T5S, R93W, 6th P.M. TAKEN FROM THE RIFLE QUADRANGLE, COLORADO, GARFIELD COUNTY, 7.5 MINUTE SERIES (TOPOGRAPHICAL MAP) PUBLISHED BY THE UNITED STATES DEPARTMENT OF THE INTERIOR, GEOLOGICAL SURVEY. SAID ELEVATION IS MARKED AS BEING 5546.19 FEET.

BASIS OF BEARINGS

BASIS OF BEARINGS IS A G.P.S. OBSERVATION.

LINE TABLE		
LINE	BEARING	LENGTH
L1	N01°22'34"E	138.91'
L2	S00°17'33"W	137.31'
L3	N00°35'27"W	437.55'

T8S, R93W, 6th P.M.



CERTIFICATE
 THIS IS TO CERTIFY THAT THE ABOVE PLAT WAS PREPARED AND THE NOTES OF ACTUAL SURVEYS MADE BY ME OR UNDER MY SUPERVISION AND THAT THE SAME ARE TRUE AND CORRECT TO THE BEST OF MY KNOWLEDGE AND BELIEF.
 [Signature]
 REGISTERED LAND SURVEYOR
 STATE OF COLORADO
 38130

REV: 5 07-13-16 C.D.L. (COMPANY NAME CHANGE)

UINTAH ENGINEERING & LAND SURVEYING
 85 SOUTH 200 EAST - VERNAL, UTAH 84078
 (435) 789-1017
 SCALE: 1" = 1000'
 DATE SURVEYED: 04-18-08
 DATE DRAWN: 05-15-08
 PARTY: B.J. D.R.B.
 REFERENCES: G.L.O. PLAT
 WEATHER: COOL
 FILE: CPX PICEANCE HOLDINGS LLC

NAD 83 (TARGET BOTTOM HOLE)
 LATITUDE = 38°23'44.85" (38.395728)
 LONGITUDE = 107°49'23.29" (107.823136)
 NAD 27 (TARGET BOTTOM HOLE)
 LATITUDE = 38°23'44.85" (38.395747)
 LONGITUDE = 107°49'21.06" (107.822517)
 STATE PLANE NAD 83 (CO. CENTRAL)
 N: 1074921.06 E: 2005517.06
 STATE PLANE NAD 27 (CO. CENTRAL)
 N: 977408.86 E: 1343705.92