

**NOBLE ENERGY INC.**  
 Dietrich C07-22D  
 NWNE 7-4N-64W  
 1276 FNL & 1350 FEL  
 WELD COUNTY, CO  
 Wattenberg  
**CURRENT WELLBORE SCHEMATIC**  
 with PROPOSED P&A  
 9/12/2016

API: 05-123-34349  
 COGCC #

GL Elev: 4817'  
 KB Elev: 4832'

**Spud Date:** 11/2/2011

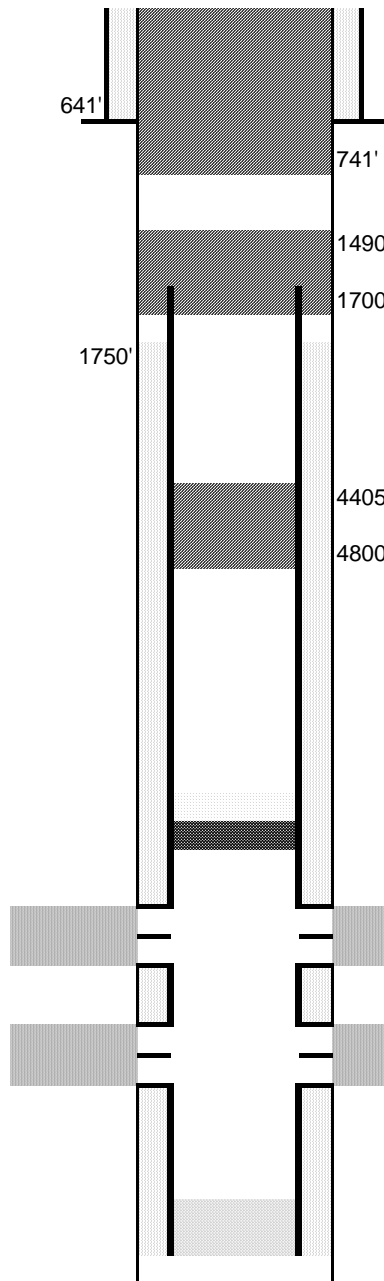
**Surface Casing :**  
 8-5/8" 24# J-55 @ 641' KB  
 Cement: 276 sx  
 TOC: Surface

**Sussex Log Top: 4553'**

**TOC @ 1750'**

**Nio Log Top: 7269'**

**Production Casing :**  
 4-1/2" 11.6# M-80 @ 7480' KB  
 Cement: 635 sx  
 TD: 11/8/2011



Cut surface casing off 6'-8' below surface.

Pump approx 250 sx shoe plug @ 741'  
 Will bring cement to surface.

Pump 100 sx stub/courtesy plug (w/ GasChek)  
 where csg was pulled  
 Cut and pull csg @ 1700'

Pump 30 sx balance plug at 4800'

Set CIBP @ 6957' w/ 2 sx cement on top

Niobrara Perforations: 7107-7187' KB

Codell Perforations: 7298-7308' KB

TD: 7490' KB