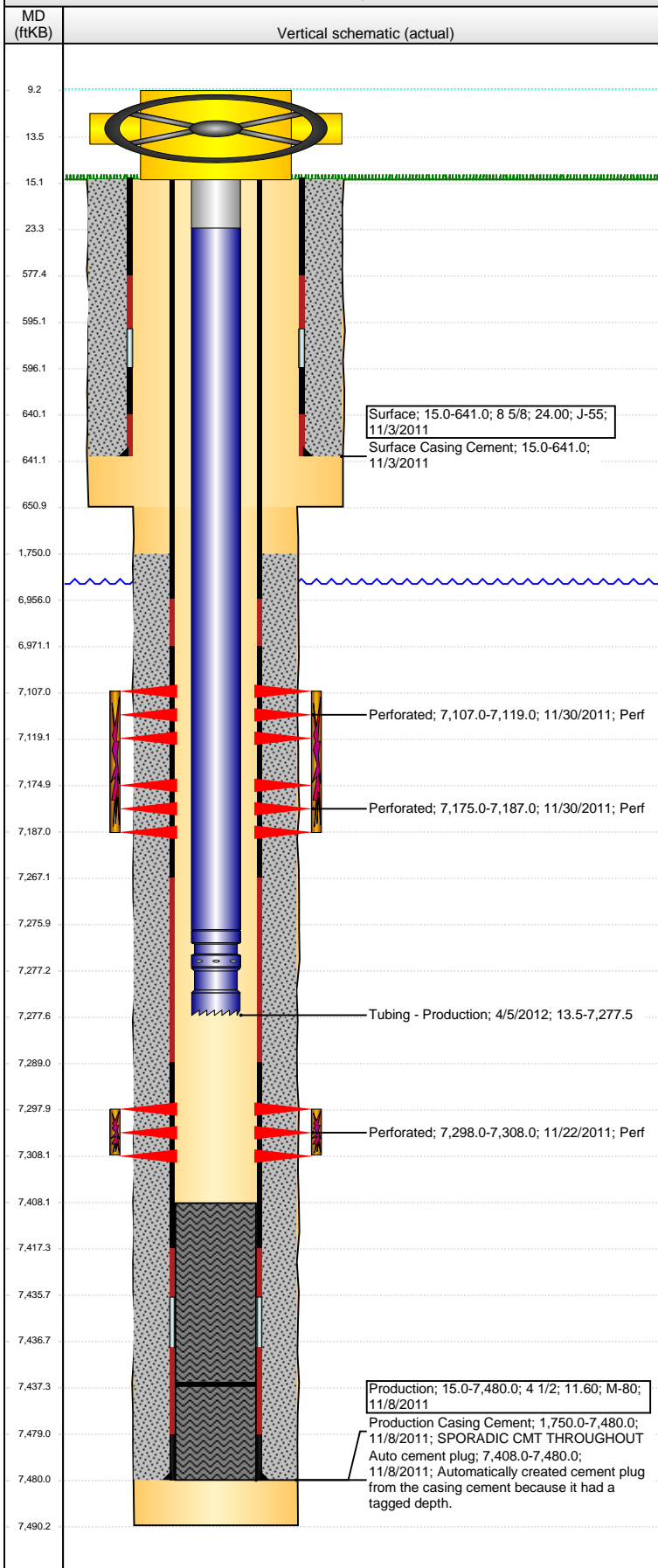


Well Name: DIETRICH C07-22D

DEVIATED - ORIGINAL HOLE, 9/12/2016 2:03:35 PM



Well Header					
API	Business Unit	District	Well Config		
05-123-34349	DJ BASIN	15	DEVIATED		
Original KB Elevation (ft)	KB - GL / MSL (ftKB)	Spud Date	P & A Date		
4,832	15.00	11/2/2011			
Comment					
Directions To Well					
CR 48 & CR 49, EAST 6/10THS MILE, SOUTH 1/4, EAST INTO LOCATION.					
Congressional Location					
Quarter 3	Quarter 4	Section	Township		
NW	NE	7	4		
Twonshp N/S Dir		Range	Range E/W Dir		
N		64	W		
Bottom Hole Location					
North-South Distance (ft)	From N or S Line	East-West Distance (ft)	From E or W Line		
2,550.0	FSL	1,320.0	FEL		
Plug Back Total Depths					
Date	Depth (ftKB)	Method	Com		
11/8/2011	7,435.0	CASING TALLY	FLOAT COLLAR		
11/22/2011	7,408.0	CASED HOLE LOG	DEPTH LOGGER ON CBL		
4/4/2012	7,437.3	TBG TALLY	DRILLED OUT CFP AND C/O TO 7437.30' KB AND...		
Wellbore Sections					
Section Des	Size (in)	Act Top, MD (ftKB)	Act Btm, MD (ftKB)		
SURFACE	12 1/4	15	651		
PRODUCTION	7 7/8	651	7,490		
Zone Statuses					
Zone Name	Status Date	Status	Fluid Type	Job	Prod Method
CODELL	12/21/2011	PR		DRILLING/CO...	
NIOBRARA	12/21/2011	PR		DRILLING/CO...	
Casing Strings					
Surface, 641.0ftKB					
Casing Description	Run Date	OD (in)	W/Len (l...)	Grade	Top, MD (ft...)
Surface	11/3/2011	8 5/8	24.00	J-55	14.9
MD (ftKB)					641.0
Production, 7,480.0ftKB					
Casing Description	Run Date	OD (in)	W/Len (l...)	Grade	Top, MD (ft...)
Production	11/8/2011	4 1/2	11.60	M-80	15.0
MD (ftKB)					7,480.0
Cement					
Description	Top Depth (ftKB)	Bottom Depth (ftKB)			
Surface Casing Cement	15.0	641.0			
Description	Top Depth (ftKB)	Bottom Depth (ftKB)			
Production Casing Cement	1,750.0	7,480.0			
Tubing Strings					
Tubing Description	Run Date	String...	ID (in)	Wt (lb/ft)	Grade
Tubing - Production	4/5/2012	2 3/8	1.995	4.70	J-55
Len (ft)	Set De...				
7,264.05	7,040.4				
Tubing Components					
Item Des	OD (in)	Wt (lb/ft)	Grade	Jts	Len (ft)
Tubing Pup Joint	2 3/8	4.70	J-55	1	9.70
Tubing	2 3/8	4.70	J-55	235	7,252.85
Pump Seating	2 3/8			1	1.10
Nipple	2 3/8				7,277.2
Notched collar	2 3/8			1	0.40
Btm (ftKB)	Btm (TVD) (ftKB)				
7,277.6	7,040.4				
Perforation Data					
Zone	Bnch/St g	Entered Shot Total	Top (ftKB)	Btm (ftKB)	Date
NIOBRARA, ORIGINAL HOLE	B	25	7,107.00	7,119.00	11/30/2011
NIOBRARA, ORIGINAL HOLE	C	25	7,175.00	7,187.00	11/30/2011
CODELL, ORIGINAL HOLE	1	40	7,298.00	7,308.00	11/22/2011
Stimulations & Treatments					
Date	Zone	Primary Job Type			
11/30/2011	CODELL, ORIGINAL HOLE	DRILLING/COMPLETION - ORIGINAL			
Technical Result		Tech Result Details		Tech Result Note	
Success		According to Plan			
Comment					
(CODELL) ISIP @ 181 AWAY = 2389 : PUMPED 200 BBL SWEEP DUE TO HIGH PRESSURE AT THE END OF STAGE 5 CONTINUED WITH THE JOB AS PLANNED. POST JOB : JOB WENT WELL NO ISSUES TO REPORT . 5 MIN = 2097 FINAL F.G. = 0.87					

Well Name: DIETRICH C07-22D

DEVIATED - ORIGINAL HOLE, 9/12/2016 2:03:37 PM

Stimulations & Treatments

Date	Zone	Primary Job Type
11/30/2011	NIOBRARA, ORIGINAL HOLE	DRILLING/COMPLETION - ORIGINAL
Technical Result	Tech Result Details	Tech Result Note
Success	According to Plan	
Comment		
(NIOBRARA) ISIP @ 175 AWAY = 3590 . HAD TO CUT STAGE 6 AT 12,067 # OF SAND BECAUSE THE HYDRO LOST RATE AND COULD ONLY MAINTAIN A PUMP RATE OF 5-8 BPM. 5 MIN = 2898 . FINAL F.G. = 0.86		

Other In Hole

Run Date	Des	OD (in)	Top (ftKB)	Btm (ftKB)

Logs

Date	Type	Top, MD (ftKB)	Btm, MD (ftKB)
11/7/2011	Caliper/Comp. Density/Neutron/GR/SP/ML	641.0	7,409.0
11/7/2011	DIL/GR/SP/Caliper	641.0	7,409.0
11/7/2011	Caliper/Comp. Density/Neutron/GR/SP/ML	641.0	7,350.0
11/7/2011	DIL/GR/SP/Caliper	641.0	7,350.0
11/22/2011	CBL/CCL/GR/VDL	1,550.0	7,408.0

