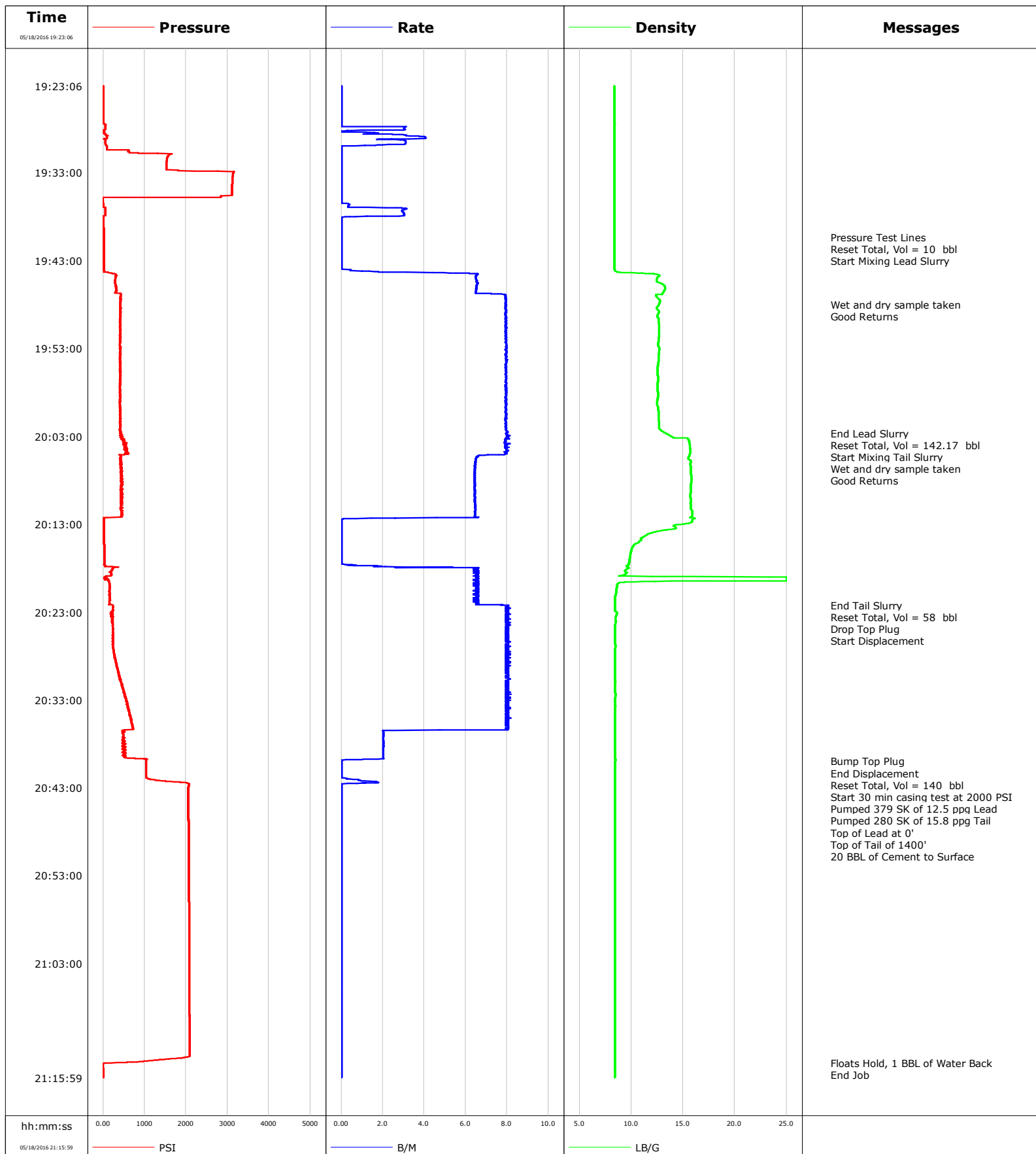


**Well** Land Fed  
**Field** Wattenberg  
**Engineer** Glenn Mendez  
**Country** United States

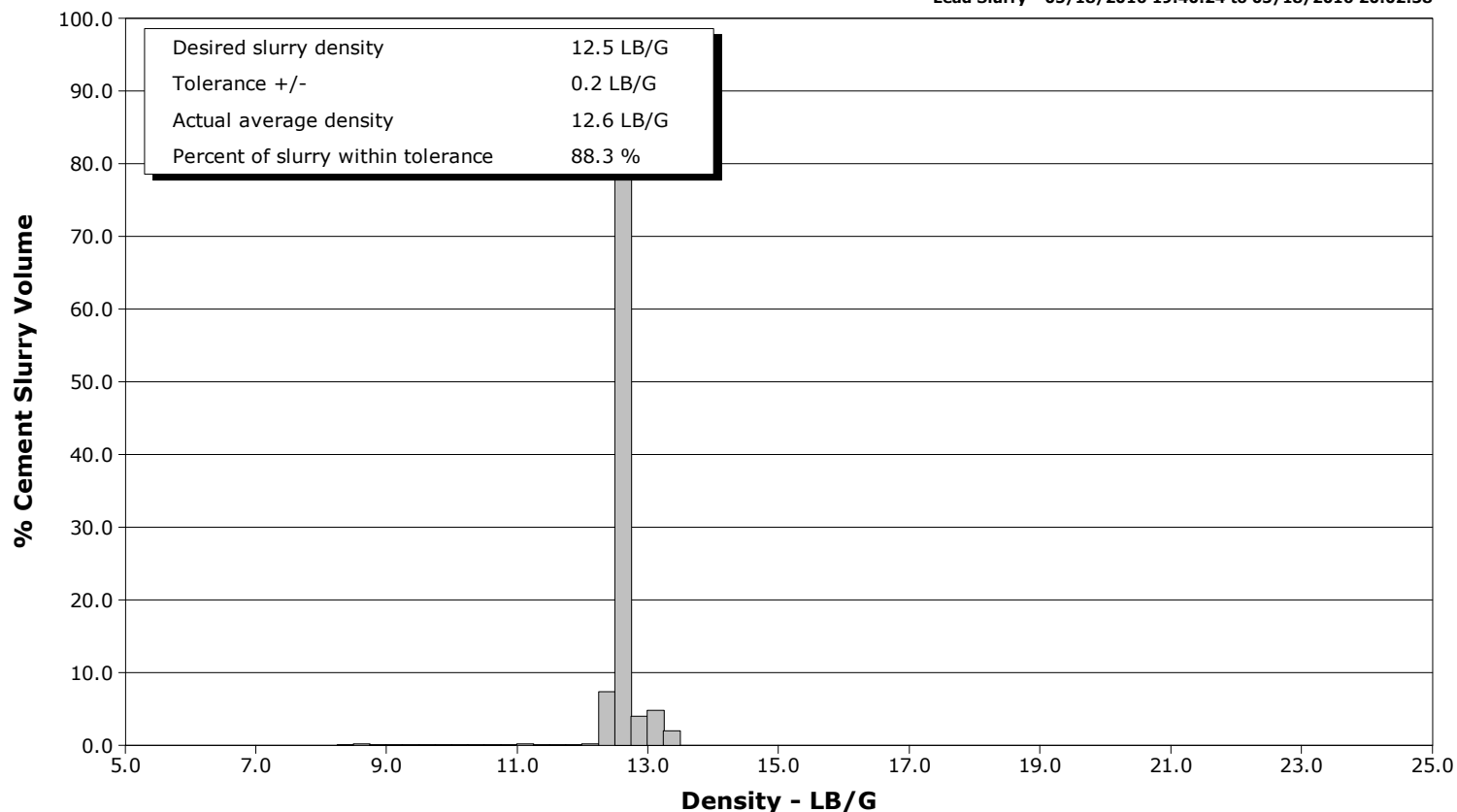
**Client** Anadarko  
**SIR No.** DJT7-00189  
**Job Type** Surface  
**Job Date** 05-18-2016



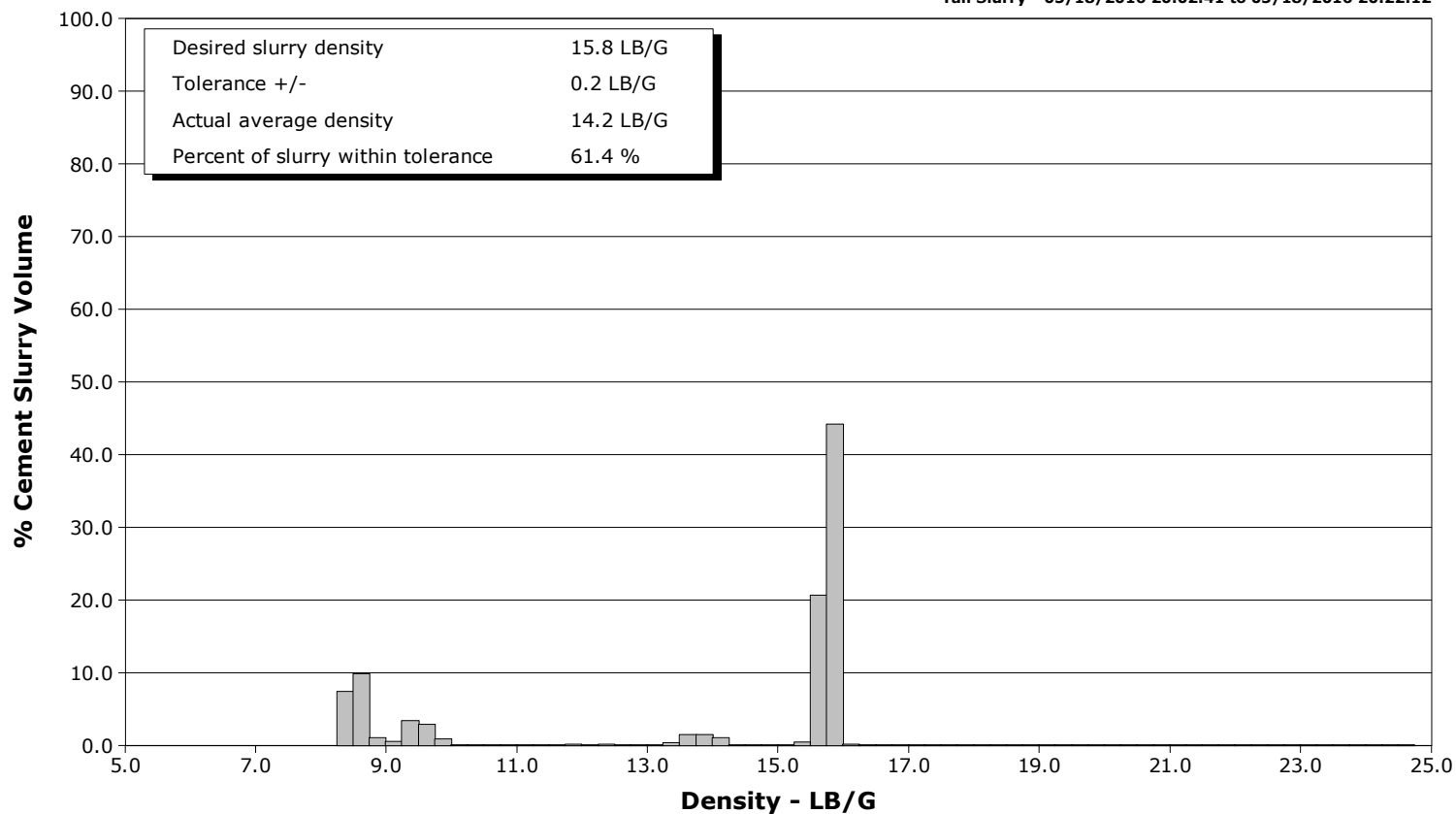
**Well** Land Fed  
**Field** Wattenberg  
**Engineer** Glenn Mendez  
**Country** United States

**Client** Anadarko  
**SIR No.** DJT7-00189  
**Job Type** Surface  
**Job Date** 05-18-2016

**Lead Slurry - 05/18/2016 19:40:24 to 05/18/2016 20:02:38**



**Tail Slurry - 05/18/2016 20:02:41 to 05/18/2016 20:22:12**



# Cementing Service Report

					Customer Anadarko			Job Number DJT7-00189	
Well Land Fed 35N-29HZ			Location (legal) 2173			Schlumberger Location Jeff Eulberg		Job Start May/18/2016	
Field Wattenberg		Formation Name/Type Shale		Deviation deg		Bit Size 13.5 in		Well MD 1900.0 ft	
County Weld		State/Province Colorado		BHP 538 psi		BHST 101 degF		BHCT 81 degF	
Well Master 0631663009		API/UWI						Pore Press. Gradient lb/gal	
Rig Name P461		Drilled For Oil & Gas		Service Via Land		Casing/ Liner			
						Depth, ft		Size, in	
						Weight, lb/ft		Grade	
Offshore Zone		Well Class New		Well Type Development		1865.0		9.6	
						0.0		0.0	
Drilling Fluid Type LT OBM		Max. Density 8.80 lb/gal		Plastic Viscosity cP		Tubing/Drill Pipe			
						T/D		Depth, ft	
						Size, in		Weight, lb/ft	
Service Line Cementing		Job Type Surface						Grade	
Max. Allowed Tub. Press psi		Max. Allowed Ann. Press psi		WH Connection		Perforations/Open Hole			
						Top, ft		Bottom, ft	
						shot/ft		No. of Shots	
Service Instructions						ft		ft	
						ft		ft	
						ft		ft	
						Treat Down Casing		Displacement 141.0 bbl	
						Packer Type		Packer Depth ft	
						Tubing Vol. bbl		Casing Vol. 144.0 bbl	
						Annular Vol. 199.0 bbl		Openhole Vol. 199.0 bbl	
Casing/Tubing Secured <input checked="" type="checkbox"/>		1 Hole Vol. Circulated prior to Cement <input checked="" type="checkbox"/>				Casing Tools		Squeeze Job	
Lift Pressure 538 psi						Shoe Type Float		Squeeze Type	
Pipe Rotated <input type="checkbox"/>		Pipe Reciprocated <input type="checkbox"/>				Shoe Depth ft		Tool Type	
No. Centralizers		Top Plugs 1		Bottom Plugs		Stage Tool Type		Tool Depth ft	
Cement Head Type Single						Stage Tool Depth ft		Tail Pipe Size in	
Job Scheduled For May/18/2016		Arrived on Location May/18/2016		Leave Location May/18/2016		Collar Type Float		Tail Pipe Depth ft	
						Collar Depth 1813.0 ft		Sqz. Total Vol. bbl	
Date	Time 24-hr clock	Treating Pressure PSI	Flow Rate B/M	Density LB/G	Volume BBL	Solid Fraction NULL	Message		
05/18/2016	19:23:06	10	0.0	8.39	0.0	0	Started Acquisition		
05/18/2016	19:23:36	9	0.0	8.39	0.0	0			
05/18/2016	19:24:06	10	0.0	8.39	0.0	0			
05/18/2016	19:24:36	7	0.0	8.39	0.0	0			
05/18/2016	19:25:06	6	0.0	8.39	0.0	0			
05/18/2016	19:25:36	7	0.0	8.39	0.0	0			
05/18/2016	19:26:06	4	0.0	8.39	0.0	0			
05/18/2016	19:26:36	1	0.0	8.39	0.0	0			
05/18/2016	19:27:06	1	0.0	8.39	0.0	0			
05/18/2016	19:27:36	60	0.0	8.39	0.0	0			
05/18/2016	19:28:06	49	3.1	8.39	1.1	0			
05/18/2016	19:28:36	62	1.8	8.39	1.6	0			
05/18/2016	19:29:06	86	4.1	8.39	3.4	0			
05/18/2016	19:29:36	59	3.1	8.39	4.9	0			
05/18/2016	19:30:06	92	0.0	8.39	5.7	0			
05/18/2016	19:30:36	603	0.0	8.39	5.7	0			
05/18/2016	19:31:06	1565	0.0	8.39	5.7	0			
05/18/2016	19:31:36	1533	0.0	8.39	5.7	0			
05/18/2016	19:32:06	1527	0.0	8.39	5.7	0			
05/18/2016	19:32:36	1522	0.0	8.39	5.7	0			
05/18/2016	19:33:06	3133	0.0	8.39	5.7	0			

Well			Field		Job Start		Customer		Job Number	
Land Fed 35N-29HZ			Wattenberg		May/18/2016		Anadarko		DJT7-00189	
Date	Time 24-hr clock	Treating Pressure PSI	Flow Rate B/M	Density LB/G	Volume BBL	Solid Fraction NULL	Message			
05/18/2016	19:34:06	3113	0.0	8.39	5.7	0				
05/18/2016	19:34:36	3107	0.0	8.39	5.7	0				
05/18/2016	19:35:06	3103	0.0	8.39	5.7	0				
05/18/2016	19:35:36	3100	0.0	8.39	5.7	0				
05/18/2016	19:36:06	-4	0.0	8.39	5.7	0				
05/18/2016	19:36:36	2	0.4	8.40	5.7	0				
05/18/2016	19:37:06	53	3.1	8.39	6.3	0				
05/18/2016	19:37:36	53	3.0	8.39	7.8	0				
05/18/2016	19:38:06	9	0.0	8.39	8.8	0				
05/18/2016	19:38:36	10	0.0	8.39	8.8	0				
05/18/2016	19:39:06	10	0.0	8.39	8.8	0				
05/18/2016	19:39:36	16	0.0	8.39	8.8	0				
05/18/2016	19:40:06	16	0.0	8.39	8.8	0				
05/18/2016	19:40:18	17	0.0	8.39	8.8	0	Pressure Test Lines			
05/18/2016	19:40:20	17	0.0	8.39	8.8	0	Reset Total, Vol = 10 bbl			
05/18/2016	19:40:24	17	0.0	8.39	8.8	0	Start Mixing Lead Slurry			
05/18/2016	19:40:36	18	0.0	8.39	8.8	0				
05/18/2016	19:41:06	18	0.0	8.39	8.8	0				
05/18/2016	19:41:36	18	0.0	8.39	8.8	0				
05/18/2016	19:42:06	18	0.0	8.39	8.8	0				
05/18/2016	19:42:36	18	0.0	8.39	8.8	0				
05/18/2016	19:43:06	19	0.0	8.39	8.8	0				
05/18/2016	19:43:36	17	0.0	8.40	8.8	0				
05/18/2016	19:44:06	14	0.4	8.41	8.9	18				
05/18/2016	19:44:36	299	6.5	12.58	10.8	18				
05/18/2016	19:45:06	294	6.5	12.46	14.0	18				
05/18/2016	19:45:36	294	6.6	12.91	17.3	21				
05/18/2016	19:46:06	320	6.5	13.25	20.5	23				
05/18/2016	19:46:36	309	6.5	13.09	23.8	23				
05/18/2016	19:47:06	421	7.9	12.43	27.5	23				
05/18/2016	19:47:36	417	7.9	12.76	31.5	24				
05/18/2016	19:47:59	419	7.9	12.68	34.5	25	Wet and dry sample taken			
05/18/2016	19:48:06	417	7.9	12.63	35.5	25				
05/18/2016	19:48:36	409	7.9	12.56	39.4	25				
05/18/2016	19:49:06	415	7.9	12.58	43.4	25				
05/18/2016	19:49:36	414	7.9	12.62	47.4	25				
05/18/2016	19:50:06	421	7.9	12.65	51.3	26				
05/18/2016	19:50:36	417	8.0	12.69	55.3	26				
05/18/2016	19:51:06	413	7.9	12.69	59.3	26				
05/18/2016	19:51:36	421	7.9	12.67	63.2	26				
05/18/2016	19:52:06	408	8.0	12.63	67.2	26				
05/18/2016	19:52:36	405	8.0	12.58	71.2	25				
05/18/2016	19:53:06	417	7.9	12.73	75.1	26				
05/18/2016	19:53:36	409	8.0	12.66	79.1	27				
05/18/2016	19:54:06	404	7.9	12.63	83.1	27				
05/18/2016	19:54:36	401	7.9	12.60	87.1	27				
05/18/2016	19:55:06	425	7.9	12.55	91.0	25				
05/18/2016	19:55:36	421	7.9	12.53	95.0	24				
05/18/2016	19:56:06	423	7.9	12.57	99.0	25				
05/18/2016	19:56:36	409	7.9	12.59	103.0	25				
05/18/2016	19:57:06	409	7.9	12.52	106.9	25				
05/18/2016	19:57:36	404	7.9	12.55	110.9	25				
05/18/2016	19:58:06	411	8.0	12.57	114.9	25				
05/18/2016	19:58:36	409	7.9	12.56	118.8	25				

Well			Field		Job Start		Customer		Job Number	
Land Fed 35N-29HZ			Wattenberg		May/18/2016		Anadarko		DJT7-00189	
Date	Time 24-hr clock	Treating Pressure PSI	Flow Rate B/M	Density LB/G	Volume BBL	Solid Fraction NULL	Message			
05/18/2016	19:59:36	411	7.9	12.56	126.8	25				
05/18/2016	20:00:06	405	7.9	12.61	130.7	25				
05/18/2016	20:00:36	419	7.9	12.63	134.7	25				
05/18/2016	20:01:06	417	7.9	12.65	138.7	26				
05/18/2016	20:01:36	415	7.9	12.66	142.7	26				
05/18/2016	20:02:06	408	7.9	12.69	146.6	26				
05/18/2016	20:02:36	421	8.0	13.25	150.6	31				
05/18/2016	20:02:38	453	8.0	13.33	150.9	32	End Lead Slurry			
05/18/2016	20:02:39	403	7.9	13.35	151.0	32	Reset Total, Vol = 142.17 bbl			
05/18/2016	20:02:41	436	8.0	13.38	151.3	32	Start Mixing Tail Slurry			
05/18/2016	20:02:47	444	8.0	13.54	152.1	33	Wet and dry sample taken			
05/18/2016	20:02:48	424	8.0	13.57	152.2	34	Good Returns			
05/18/2016	20:03:06	442	8.1	14.02	154.6	37				
05/18/2016	20:03:36	513	7.9	15.58	158.6	41				
05/18/2016	20:04:06	518	7.9	15.64	162.6	42				
05/18/2016	20:04:36	548	8.1	15.70	166.5	43				
05/18/2016	20:05:06	390	7.1	15.62	170.5	43				
05/18/2016	20:05:36	427	6.5	15.56	173.8	42				
05/18/2016	20:06:06	433	6.5	15.70	177.0	42				
05/18/2016	20:06:36	416	6.4	15.76	180.3	41				
05/18/2016	20:07:06	446	6.4	15.75	183.5	41				
05/18/2016	20:07:36	444	6.4	15.77	186.7	41				
05/18/2016	20:08:06	426	6.4	15.77	189.9	41				
05/18/2016	20:08:36	439	6.4	15.75	193.2	40				
05/18/2016	20:09:06	416	6.4	15.73	196.4	40				
05/18/2016	20:09:36	470	6.4	15.72	199.6	40				
05/18/2016	20:10:06	423	6.4	15.72	202.8	41				
05/18/2016	20:10:36	437	6.5	15.72	206.0	41				
05/18/2016	20:11:06	440	6.5	15.72	209.3	41				
05/18/2016	20:11:36	474	6.5	15.90	212.5	59				
05/18/2016	20:12:06	458	6.4	15.89	215.7	60				
05/18/2016	20:12:36	17	0.0	15.88	217.0	0				
05/18/2016	20:13:06	15	0.0	14.21	217.0	0				
05/18/2016	20:13:36	21	0.0	13.73	217.0	0				
05/18/2016	20:14:06	21	0.0	11.68	217.0	0				
05/18/2016	20:14:36	17	0.0	10.97	217.0	0				
05/18/2016	20:15:06	20	0.0	10.68	217.0	0				
05/18/2016	20:15:36	25	0.0	10.12	217.0	0				
05/18/2016	20:16:06	26	0.0	9.98	217.0	0				
05/18/2016	20:16:36	29	0.0	9.89	217.0	0				
05/18/2016	20:17:06	27	0.0	9.82	217.0	0				
05/18/2016	20:17:36	26	0.2	9.78	217.0	67				
05/18/2016	20:18:06	230	6.5	9.57	218.7	67				
05/18/2016	20:18:36	195	6.6	9.48	222.0	67				
05/18/2016	20:19:06	39	6.6	25.00	225.2	67				
05/18/2016	20:19:36	144	6.5	9.39	228.5	5				
05/18/2016	20:20:06	160	6.6	8.61	231.8	27				
05/18/2016	20:20:36	159	6.5	8.59	235.1	4				
05/18/2016	20:21:06	153	6.5	8.55	238.3	4				
05/18/2016	20:21:36	157	6.6	8.42	241.6	28				
05/18/2016	20:22:06	148	6.6	8.41	244.9	0				
05/18/2016	20:22:12	233	7.7	8.40	245.6	0	End Tail Slurry			
05/18/2016	20:22:14	233	8.0	8.40	245.8	0	Reset Total, Vol = 58 bbl			
05/18/2016	20:22:18	240	8.0	8.40	246.4	0	Drop Top Plug			

Well			Field		Job Start		Customer		Job Number	
Land Fed 35N-29HZ			Wattenberg		May/18/2016		Anadarko		DJT7-00189	
Date	Time 24-hr clock	Treating Pressure PSI	Flow Rate B/M	Density LB/G	Volume BBL	Solid Fraction NULL	Message			
05/18/2016	20:22:36	232	7.9	8.40	248.8	0				
05/18/2016	20:23:06	194	8.0	8.64	252.8	0				
05/18/2016	20:23:36	211	7.9	8.49	256.8	0				
05/18/2016	20:24:06	242	7.9	8.52	260.8	0				
05/18/2016	20:24:36	237	8.0	8.44	264.8	0				
05/18/2016	20:25:06	246	7.9	8.43	268.8	0				
05/18/2016	20:25:36	245	8.0	8.42	272.8	0				
05/18/2016	20:26:06	251	8.0	8.43	276.8	0				
05/18/2016	20:26:36	241	7.9	8.43	280.8	0				
05/18/2016	20:27:06	247	8.0	8.45	284.9	0				
05/18/2016	20:27:36	272	7.9	8.43	288.9	0				
05/18/2016	20:28:06	291	8.0	8.43	292.9	0				
05/18/2016	20:28:36	302	7.9	8.43	296.9	0				
05/18/2016	20:29:06	338	7.9	8.43	300.9	0				
05/18/2016	20:29:36	365	7.9	8.43	304.9	0				
05/18/2016	20:30:06	394	8.0	8.43	308.9	0				
05/18/2016	20:30:36	419	8.0	8.43	312.9	0				
05/18/2016	20:31:06	449	8.0	8.44	316.9	0				
05/18/2016	20:31:36	472	8.0	8.43	320.9	0				
05/18/2016	20:32:06	505	8.0	8.43	324.9	0				
05/18/2016	20:32:36	539	7.9	8.46	328.9	0				
05/18/2016	20:33:06	567	8.0	8.44	333.0	0				
05/18/2016	20:33:36	578	8.0	8.43	337.0	0				
05/18/2016	20:34:06	615	8.0	8.43	341.0	0				
05/18/2016	20:34:36	637	7.9	8.43	345.0	0				
05/18/2016	20:35:06	667	8.0	8.43	349.0	0				
05/18/2016	20:35:36	686	7.9	8.43	353.0	0				
05/18/2016	20:36:06	727	8.0	8.43	357.0	0				
05/18/2016	20:36:36	485	2.0	8.43	360.0	0				
05/18/2016	20:37:06	496	2.0	8.44	361.0	0				
05/18/2016	20:37:36	478	2.0	8.44	362.0	0				
05/18/2016	20:38:06	488	2.0	8.44	363.0	0				
05/18/2016	20:38:36	466	2.0	8.44	364.0	0				
05/18/2016	20:39:06	532	2.1	8.44	365.1	0				
05/18/2016	20:39:36	607	2.0	8.44	366.1	0				
05/18/2016	20:39:57	1037	0.0	8.45	366.4	0	Bump Top Plug			
05/18/2016	20:39:58	1035	0.0	8.44	366.4	0	End Displacement			
05/18/2016	20:40:01	1033	0.0	8.42	366.4	0	Reset Total, Vol = 140 bbl			
05/18/2016	20:40:06	1032	0.0	8.41	366.4	0				
05/18/2016	20:40:36	1032	0.0	8.41	366.4	0				
05/18/2016	20:41:06	1031	0.0	8.41	366.4	0				
05/18/2016	20:41:08	1031	0.0	8.41	366.4	0	Start 30 min casing test at 2000 PSI			
05/18/2016	20:41:09	1031	0.0	8.41	366.4	0	Pumped 379 SK of 12.5 ppg Lead			
05/18/2016	20:41:10	1031	0.0	8.41	366.4	0	Pumped 280 SK of 15.8 ppg Tail			
05/18/2016	20:41:36	1031	0.0	8.41	366.4	0				
05/18/2016	20:42:06	1256	0.8	8.41	366.5	0				
05/18/2016	20:42:36	2061	0.0	8.41	367.1	0				
05/18/2016	20:42:44	2060	0.0	8.40	367.1	0	Top of Lead at 0'			
05/18/2016	20:43:06	2057	0.0	8.41	367.1	0				
05/18/2016	20:43:36	2056	0.0	8.40	367.1	0				
05/18/2016	20:44:06	2055	0.0	8.40	367.1	0				
05/18/2016	20:44:36	2055	0.0	8.41	367.1	0				
05/18/2016	20:45:06	2056	0.0	8.41	367.1	0				
05/18/2016	20:45:36	2056	0.0	8.41	367.1	0				

Well			Field		Job Start		Customer		Job Number	
Land Fed 35N-29HZ			Wattenberg		May/18/2016		Anadarko		DJT7-00189	
Date	Time 24-hr clock	Treating Pressure PSI	Flow Rate B/M	Density LB/G	Volume BBL	Solid Fraction NULL	Message			
05/18/2016	20:46:36	2058	0.0	8.41	367.1	0				
05/18/2016	20:46:49	2058	0.0	8.41	367.1	0	20 BBL of Cement to Surface			
05/18/2016	20:47:06	2059	0.0	8.41	367.1	0				
05/18/2016	20:47:36	2059	0.0	8.41	367.1	0				
05/18/2016	20:48:06	2059	0.0	8.41	367.1	0				
05/18/2016	20:48:36	2061	0.0	8.41	367.1	0				
05/18/2016	20:49:06	2061	0.0	8.41	367.1	0				
05/18/2016	20:49:36	2062	0.0	8.41	367.1	0				
05/18/2016	20:50:06	2063	0.0	8.41	367.1	0				
05/18/2016	20:50:36	2063	0.0	8.41	367.1	0				
05/18/2016	20:51:06	2064	0.0	8.41	367.1	0				
05/18/2016	20:51:36	2064	0.0	8.41	367.1	0				
05/18/2016	20:52:06	2065	0.0	8.41	367.1	0				
05/18/2016	20:52:36	2065	0.0	8.41	367.1	0				
05/18/2016	20:53:06	2066	0.0	8.41	367.1	0				
05/18/2016	20:53:36	2067	0.0	8.41	367.1	0				
05/18/2016	20:54:06	2067	0.0	8.41	367.1	0				
05/18/2016	20:54:36	2067	0.0	8.41	367.1	0				
05/18/2016	20:55:06	2068	0.0	8.41	367.1	0				
05/18/2016	20:55:36	2069	0.0	8.41	367.1	0				
05/18/2016	20:56:06	2070	0.0	8.41	367.1	0				
05/18/2016	20:56:36	2070	0.0	8.41	367.1	0				
05/18/2016	20:57:06	2070	0.0	8.41	367.1	0				
05/18/2016	20:57:36	2071	0.0	8.41	367.1	0				
05/18/2016	20:58:06	2071	0.0	8.41	367.1	0				
05/18/2016	20:58:36	2072	0.0	8.41	367.1	0				
05/18/2016	20:59:06	2072	0.0	8.41	367.1	0				
05/18/2016	20:59:36	2073	0.0	8.41	367.1	0				
05/18/2016	21:00:06	2073	0.0	8.41	367.1	0				
05/18/2016	21:00:36	2073	0.0	8.41	367.1	0				
05/18/2016	21:01:06	2074	0.0	8.41	367.1	0				
05/18/2016	21:01:36	2074	0.0	8.41	367.1	0				
05/18/2016	21:02:06	2075	0.0	8.41	367.1	0				
05/18/2016	21:02:36	2075	0.0	8.41	367.1	0				
05/18/2016	21:03:06	2076	0.0	8.41	367.1	0				
05/18/2016	21:03:36	2076	0.0	8.41	367.1	0				
05/18/2016	21:04:06	2076	0.0	8.41	367.1	0				
05/18/2016	21:04:36	2077	0.0	8.41	367.1	0				
05/18/2016	21:05:06	2077	0.0	8.41	367.1	0				
05/18/2016	21:05:36	2078	0.0	8.41	367.1	0				
05/18/2016	21:06:06	2078	0.0	8.41	367.1	0				
05/18/2016	21:06:36	2079	0.0	8.41	367.1	0				
05/18/2016	21:07:06	2079	0.0	8.41	367.1	0				
05/18/2016	21:07:36	2080	0.0	8.41	367.1	0				
05/18/2016	21:08:06	2081	0.0	8.41	367.1	0				
05/18/2016	21:08:36	2081	0.0	8.41	367.1	0				
05/18/2016	21:09:06	2082	0.0	8.41	367.1	0				
05/18/2016	21:09:36	2083	0.0	8.41	367.1	0				
05/18/2016	21:10:06	2083	0.0	8.41	367.1	0				
05/18/2016	21:10:36	2084	0.0	8.41	367.1	0				
05/18/2016	21:11:06	2084	0.0	8.41	367.1	0				
05/18/2016	21:11:36	2085	0.0	8.41	367.1	0				
05/18/2016	21:12:06	2085	0.0	8.41	367.1	0				
05/18/2016	21:12:36	2086	0.0	8.41	367.1	0				

Well			Field		Job Start		Customer		Job Number	
Land Fed 35N-29HZ			Wattenberg		May/18/2016		Anadarko		DJT7-00189	
Date	Time 24-hr clock	Treating Pressure PSI	Flow Rate B/M	Density LB/G	Volume BBL	Solid Fraction NULL	Message			
05/18/2016	21:13:36	2060	0.0	8.41	367.1	0				
05/18/2016	21:14:06	1040	0.0	8.41	367.1	0				
05/18/2016	21:14:20	29	0.0	8.41	367.1	0	Floats Hold, 1 BBL of Water Back			
05/18/2016	21:14:36	-3	0.0	8.41	367.1	0	End Job			
05/18/2016	21:15:06	2	0.0	8.41	367.1	0				

## Post Job Summary

Average Pump Rates, bbl/min					Volume of Fluid Injected, bbl						
Slurry 6.6	N2	Mud	Maximum Rate 8.2		Total Slurry 367.1	Mud 0.0	Spacer 8.8	N2			
Treating Pressure Summary, psi					Breakdown Fluid						
Maximum 3149	Final 9	Average 907	Bump Plug to	Breakdown	Type	Volume bbl		Density lb/gal			
Avg. N2 Percent %	Designed Slurry Volume 0.0 bbl		Displacement 120.1 bbl	Mix Water Temp 70 degF	Cement Circulated to Surface? <input type="checkbox"/>		Volume bbl				
					Washed Thru Perfs <input type="checkbox"/>		To ft				
Customer or Authorized Representative James Gober			Schlumberger Supervisor Glenn Mendez			Circulation Lost <input type="checkbox"/>	Job Completed <input type="checkbox"/>				
						-	-				