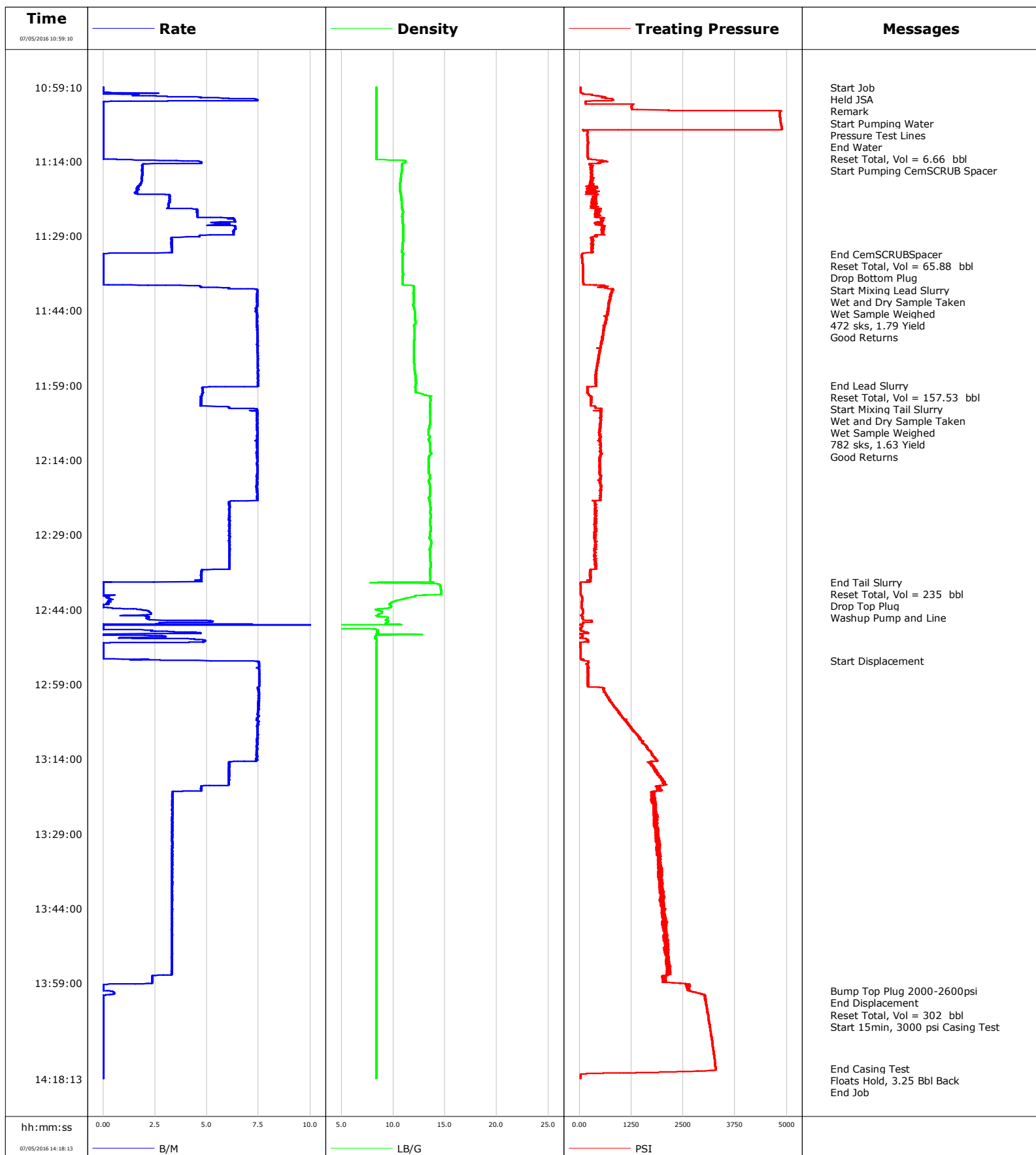


Well Land Fed 3N-32HZ
Field DJ
Engineer Ryan Drilling/Ken Sovereign
Country United States

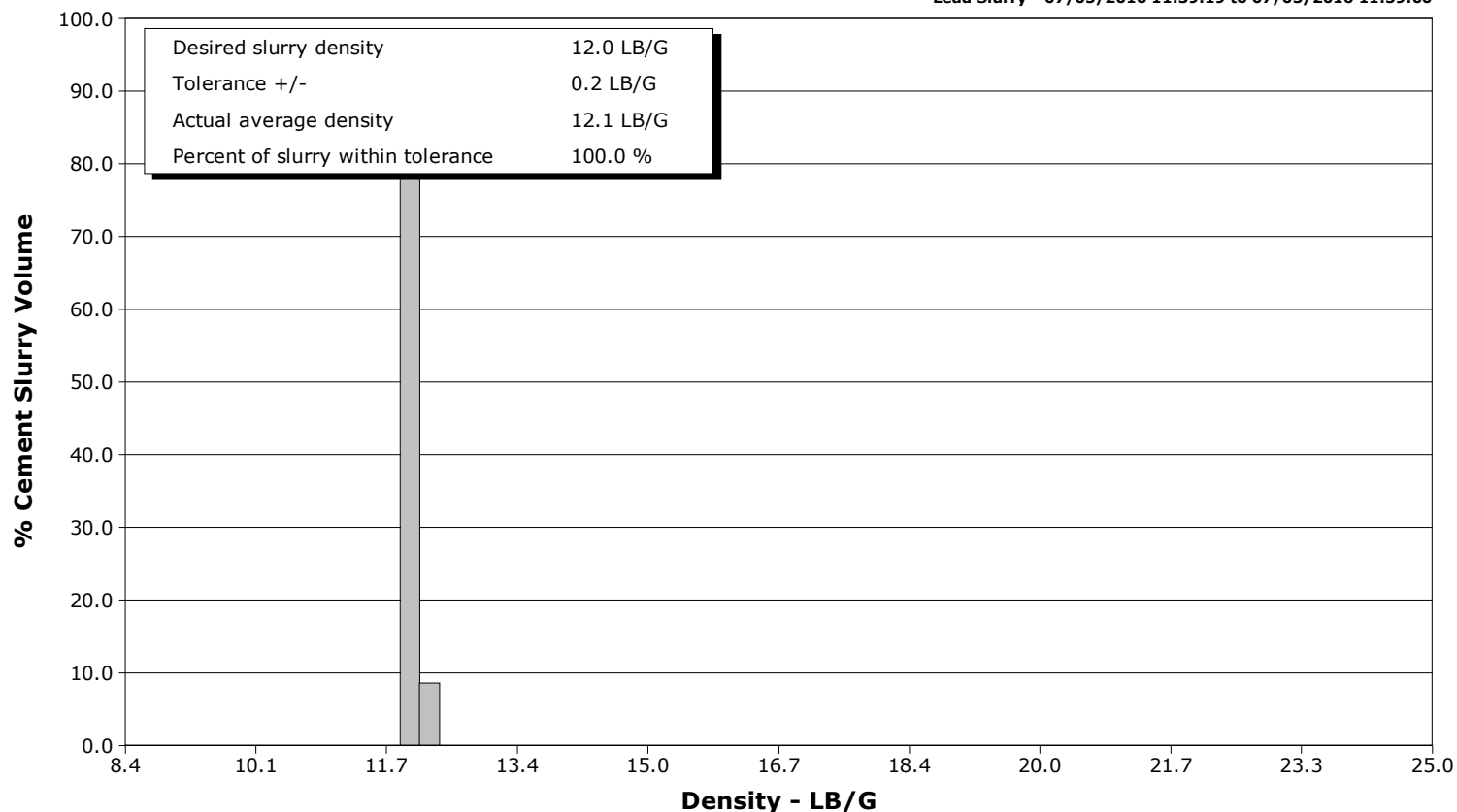
Client Anadarko
SIR No. DMBW-00184
Job Type 5.5 Production
Job Date 07-05-2016



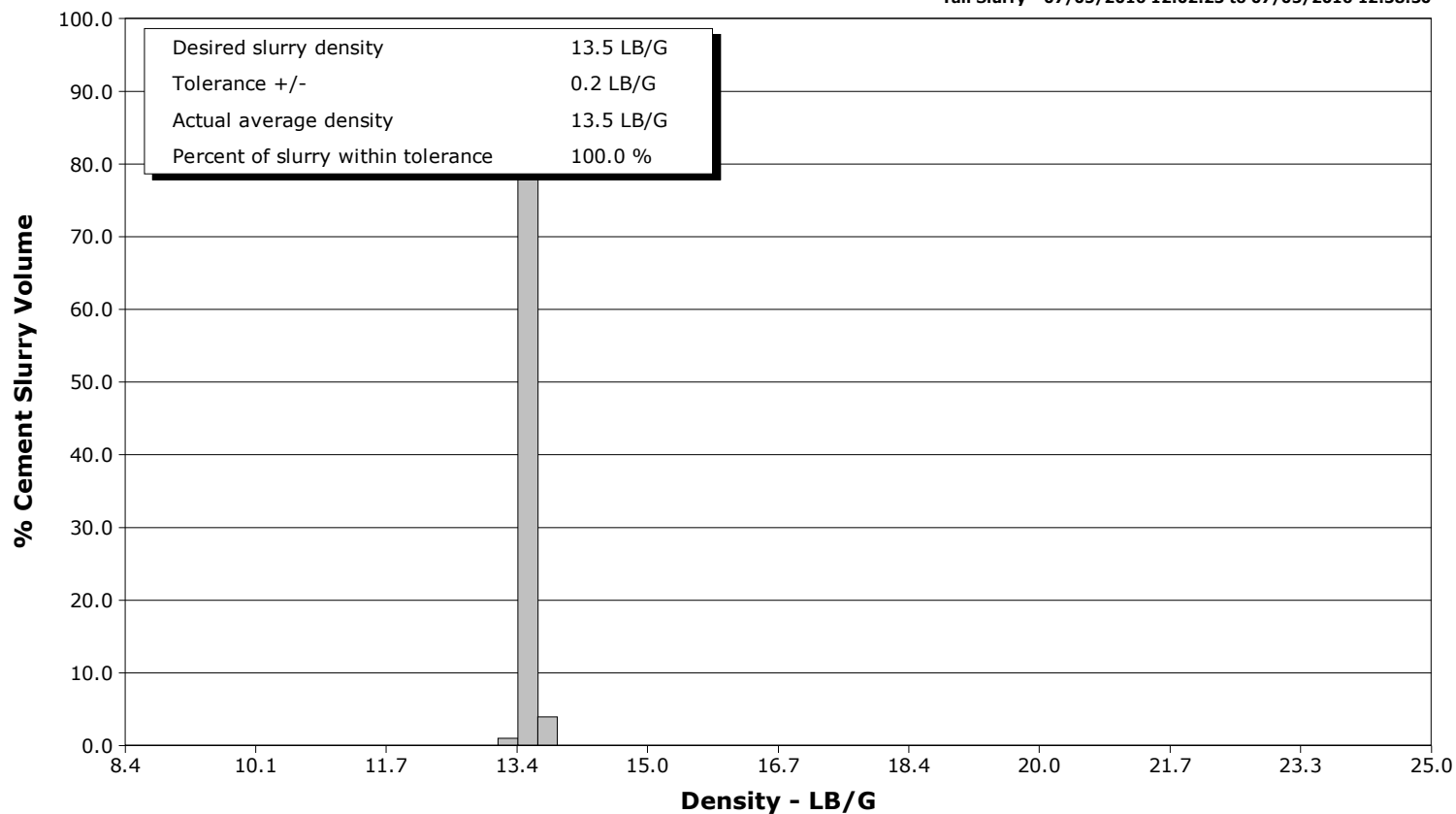
Well Land Fed 3N-32HZ
Field DJ
Engineer Ryan Drilling/Ken Sovereign
Country United States

Client Anadarko
SIR No. DMBW-00184
Job Type 5.5 Production
Job Date 07-05-2016

Lead Slurry - 07/05/2016 11:39:19 to 07/05/2016 11:59:00



Tail Slurry - 07/05/2016 12:02:23 to 07/05/2016 12:38:30



Cementing Service Report

				Customer Anadarko			Job Number DMBW-00184				
Well Land Fed 3N-32HZ			Location (legal) CWY			Schlumberger Location Rock Springs			Job Start Jul/05/2016		
Field DJ		Formation Name/Type shale		Deviation 90 deg		Bit Size 7.9 in		Well MD 13025.0 ft		Well TVD 7286.0 ft	
County Weld		State/Province Colorado		BHP psi		BHST 231 degF		BHCT 228 degF		Pore Press. Gradient lb/gal	
Well Master 0631662963		API/UWI									
Rig Name Precision 461		Drilled For Oil		Service Via Land		Casing/Liner					
						Depth, ft		Size, in		Weight, lb/ft	
										Grade	
										Thread	
Offshore Zone		Well Class New		Well Type Development		1872.0		9.6		36.0	
						13025.0		5.5		p110	
Drilling Fluid Type		Max. Density lb/gal		Plastic Viscosity cP		Tubing/Drill Pipe					
						T/D		Depth, ft		Size, in	
										Weight, lb/ft	
										Grade	
										Thread	
Service Line Cementing		Job Type 5.5 Production									
Max. Allowed Tub. Press psi		Max. Allowed Ann. Press psi		WH Connection Double Cement head		Perforations/Open Hole					
						Top, ft		Bottom, ft		shot/ft	
										No. of Shots	
										Total Interval ft	
										Diameter in	
						Treat Down Casing		Displacement 301.0 bbl		Packer Type	
										Packer Depth ft	
						Tubing Vol. bbl		Casing Vol. 303.0 bbl		Annular Vol. 89.0 bbl	
										Openhole Vol. 345.0 bbl	
Casing/Tubing Secured <input checked="" type="checkbox"/>		1 Hole Vol. Circulated prior to Cement <input checked="" type="checkbox"/>				Casing Tools			Squeeze Job		
Lift Pressure 2000 psi						Shoe Type Float			Squeeze Type		
Pipe Rotated <input type="checkbox"/>		Pipe Reciprocated <input type="checkbox"/>				Shoe Depth 13025.0 ft			Tool Type		
No. Centralizers		Top Plugs 1		Bottom Plugs 1		Stage Tool Type			Tool Depth ft		
Cement Head Type Double						Stage Tool Depth ft			Tail Pipe Size in		
Job Scheduled For Jul/05/2016 06:00		Arrived on Location Jul/05/2016 06:00		Leave Location Jul/05/2016 15:00		Collar Type Float			Tail Pipe Depth ft		
						Collar Depth 12932.0 ft			Sqz. Total Vol. bbl		
Date	Time 24-hr clock	Treating Pressure PSI	Flow Rate B/M	Density LB/G	Volume BBL	Message					
07/05/2016	10:59:10	27	0.0	8.36	0.0	Started Acquisition					
07/05/2016	10:59:11	27	0.0	8.36	0.0	Start Job					
07/05/2016	10:59:12	27	0.0	8.36	0.0	Held JSA					
07/05/2016	10:59:13	27	0.0	8.36	0.0	Start Pumping Water					
07/05/2016	10:59:15	27	0.0	8.36	0.0	Pressure Test Lines					
07/05/2016	10:59:40	27	0.0	8.36	0.0						
07/05/2016	11:00:10	28	0.0	8.36	0.0						
07/05/2016	11:00:40	266	1.7	8.36	0.4						
07/05/2016	11:01:10	592	4.6	8.36	1.6						
07/05/2016	11:01:40	789	7.4	8.37	4.6						
07/05/2016	11:02:10	144	0.0	8.36	6.7						
07/05/2016	11:02:40	1288	0.0	8.36	6.7						
07/05/2016	11:03:10	1255	0.0	8.36	6.7						
07/05/2016	11:03:40	1260	0.0	8.36	6.7						
07/05/2016	11:04:10	4827	0.0	8.36	6.7						
07/05/2016	11:04:40	4825	0.0	8.36	6.7						
07/05/2016	11:05:10	4831	0.0	8.36	6.7						
07/05/2016	11:05:40	4840	0.0	8.36	6.7						
07/05/2016	11:06:10	4850	0.0	8.36	6.7						
07/05/2016	11:06:40	4862	0.0	8.36	6.7						
07/05/2016	11:07:10	4873	0.0	8.36	6.7						

Well			Field	Job Start		Customer	Job Number
Land Fed 3N-32HZ			DJ	Jul/05/2016		Anadarko	DMBW-00184
Date	Time 24-hr clock	Treating Pressure PSI	Flow Rate B/M	Density LB/G	Volume BBL	Message	
07/05/2016	11:08:10	193	0.0	8.36	6.7		
07/05/2016	11:08:40	190	0.0	8.36	6.7		
07/05/2016	11:08:45	191	0.0	8.36	6.7	End Water	
07/05/2016	11:08:46	190	0.0	8.37	6.7	Reset Total, Vol = 6.66 bbl	
07/05/2016	11:08:49	191	0.0	8.36	0.0	Start Pumping CemSCRUB Spacer	
07/05/2016	11:09:10	193	0.0	8.37	0.0		
07/05/2016	11:09:40	195	0.0	8.37	0.0		
07/05/2016	11:10:10	203	0.0	8.36	0.0		
07/05/2016	11:10:40	199	0.0	8.36	0.0		
07/05/2016	11:11:10	197	0.0	8.36	0.0		
07/05/2016	11:11:40	197	0.0	8.36	0.0		
07/05/2016	11:12:10	197	0.0	8.37	0.0		
07/05/2016	11:12:40	197	0.0	8.37	0.0		
07/05/2016	11:13:10	199	0.0	8.37	0.0		
07/05/2016	11:13:40	296	0.7	8.37	0.0		
07/05/2016	11:14:10	585	4.7	11.19	1.5		
07/05/2016	11:14:40	228	1.9	10.87	3.5		
07/05/2016	11:15:10	310	1.9	10.87	4.4		
07/05/2016	11:15:40	296	1.9	10.85	5.4		
07/05/2016	11:16:10	288	1.9	10.82	6.3		
07/05/2016	11:16:40	278	1.9	10.77	7.3		
07/05/2016	11:17:10	298	1.9	10.75	8.2		
07/05/2016	11:17:40	329	1.9	10.73	9.2		
07/05/2016	11:18:10	274	1.8	10.70	10.1		
07/05/2016	11:18:40	286	1.8	10.68	11.0		
07/05/2016	11:19:10	365	1.7	10.67	11.9		
07/05/2016	11:19:40	316	1.7	10.67	12.7		
07/05/2016	11:20:10	300	1.6	10.69	13.5		
07/05/2016	11:20:40	379	2.2	10.73	14.3		
07/05/2016	11:21:10	354	3.2	10.78	15.9		
07/05/2016	11:21:40	403	3.2	10.79	17.5		
07/05/2016	11:22:10	356	3.2	10.80	19.1		
07/05/2016	11:22:40	366	3.2	10.81	20.7		
07/05/2016	11:23:10	462	3.2	10.85	22.3		
07/05/2016	11:23:40	442	4.5	10.89	24.0		
07/05/2016	11:24:10	423	4.5	10.94	26.2		
07/05/2016	11:24:40	478	4.5	10.90	28.5		
07/05/2016	11:25:10	416	4.5	10.88	30.8		
07/05/2016	11:25:40	534	6.3	10.91	33.6		
07/05/2016	11:26:10	554	6.4	10.90	36.7		
07/05/2016	11:26:40	522	6.1	10.94	39.7		
07/05/2016	11:27:10	536	6.4	10.97	42.7		
07/05/2016	11:27:40	562	6.4	10.96	45.9		
07/05/2016	11:28:10	582	6.3	10.95	49.1		
07/05/2016	11:28:40	573	6.3	10.95	52.2		
07/05/2016	11:29:10	418	4.6	10.94	54.8		
07/05/2016	11:29:40	302	3.3	10.94	56.6		
07/05/2016	11:30:10	292	3.3	10.95	58.2		
07/05/2016	11:30:40	336	3.3	10.93	59.9		
07/05/2016	11:31:10	293	3.3	10.93	61.5		
07/05/2016	11:31:40	300	3.3	10.92	63.2		
07/05/2016	11:32:10	297	3.3	10.86	64.9		
07/05/2016	11:32:39	65	0.0	11.00	65.9	End CemSCRUBSpacer	
07/05/2016	11:32:40	65	0.0	11.00	65.9	Reset Total, Vol = 65.88 bbl	

Well			Field		Job Start		Customer		Job Number	
Land Fed 3N-32HZ			DJ		Jul/05/2016		Anadarko		DMBW-00184	
Date	Time 24-hr clock	Treating Pressure PSI	Flow Rate B/M	Density LB/G	Volume BBL	Message				
07/05/2016	11:33:10	58	0.0	10.92	0.0					
07/05/2016	11:33:40	65	0.0	10.93	0.0					
07/05/2016	11:34:10	68	0.0	10.93	0.0					
07/05/2016	11:34:40	73	0.0	10.93	0.0					
07/05/2016	11:35:10	78	0.0	10.93	0.0					
07/05/2016	11:35:40	79	0.0	10.93	0.0					
07/05/2016	11:36:10	85	0.0	10.93	0.0					
07/05/2016	11:36:40	83	0.0	10.93	0.0					
07/05/2016	11:37:10	86	0.0	10.92	0.0					
07/05/2016	11:37:40	90	0.0	10.92	0.0					
07/05/2016	11:38:10	93	0.0	10.92	0.0					
07/05/2016	11:38:40	99	0.0	10.92	0.0					
07/05/2016	11:39:10	680	4.7	11.99	1.1					
07/05/2016	11:39:19	476	4.7	11.99	1.8	Start Mixing Lead Slurry				
07/05/2016	11:39:20	454	4.7	11.99	1.9	Wet and Dry Sample Taken				
07/05/2016	11:39:21	454	4.7	12.00	2.0	Wet Sample Weighed				
07/05/2016	11:39:22	612	5.1	12.00	2.1	Good Returns				
07/05/2016	11:39:40	800	7.2	12.02	3.9					
07/05/2016	11:40:10	789	7.4	11.97	7.6					
07/05/2016	11:40:40	742	7.4	11.94	11.3					
07/05/2016	11:41:10	737	7.4	11.96	15.0					
07/05/2016	11:41:40	739	7.4	11.96	18.7					
07/05/2016	11:42:10	713	7.4	11.97	22.4					
07/05/2016	11:42:40	698	7.4	11.95	26.1					
07/05/2016	11:43:10	709	7.4	11.98	29.9					
07/05/2016	11:43:40	694	7.4	12.05	33.6					
07/05/2016	11:44:10	712	7.3	12.08	37.3					
07/05/2016	11:44:40	658	7.4	12.12	40.9					
07/05/2016	11:45:10	657	7.4	12.11	44.7					
07/05/2016	11:45:40	657	7.4	12.12	48.4					
07/05/2016	11:46:10	621	7.4	12.14	52.1					
07/05/2016	11:46:40	625	7.4	12.14	55.8					
07/05/2016	11:47:10	595	7.4	12.03	59.5					
07/05/2016	11:47:40	596	7.4	12.06	63.2					
07/05/2016	11:48:10	584	7.4	12.07	66.9					
07/05/2016	11:48:40	572	7.4	12.08	70.6					
07/05/2016	11:49:10	552	7.4	12.06	74.3					
07/05/2016	11:49:40	568	7.4	12.04	78.1					
07/05/2016	11:50:10	528	7.5	12.03	81.8					
07/05/2016	11:50:40	532	7.4	12.03	85.5					
07/05/2016	11:51:10	510	7.5	12.03	89.2					
07/05/2016	11:52:10	504	7.5	12.02	96.7					
07/05/2016	11:52:40	482	7.4	12.02	100.4					
07/05/2016	11:53:10	473	7.5	12.02	104.1					
07/05/2016	11:53:40	460	7.5	12.02	107.9					
07/05/2016	11:54:10	436	7.5	12.03	111.6					
07/05/2016	11:54:40	419	7.5	12.03	115.3					
07/05/2016	11:55:10	425	7.5	12.04	119.1					
07/05/2016	11:55:40	424	7.4	12.05	122.8					
07/05/2016	11:56:10	410	7.5	12.09	126.5					
07/05/2016	11:56:40	403	7.5	12.11	130.3					
07/05/2016	11:57:10	392	7.5	12.14	134.0					
07/05/2016	11:57:40	400	7.5	12.15	137.7					
07/05/2016	11:58:10	400	7.5	12.17	141.5					

Well			Field		Job Start		Customer		Job Number	
Land Fed 3N-32HZ			DJ		Jul/05/2016		Anadarko		DMBW-00184	
Date	Time 24-hr clock	Treating Pressure PSI	Flow Rate B/M	Density LB/G	Volume BBL	Message				
07/05/2016	11:59:00	398	7.5	12.17	147.7	End Lead Slurry				
07/05/2016	11:59:10	411	7.5	12.17	148.9					
07/05/2016	11:59:40	190	4.8	12.14	151.7					
07/05/2016	12:00:10	204	4.8	12.14	154.1					
07/05/2016	12:00:40	213	4.8	12.68	156.5					
07/05/2016	12:00:53	224	4.8	12.93	157.5	Reset Total, Vol = 157.53 bbl				
07/05/2016	12:01:10	253	4.7	13.63	1.4					
07/05/2016	12:01:40	274	4.7	13.59	3.7					
07/05/2016	12:02:10	272	4.7	13.61	6.1					
07/05/2016	12:02:23	270	4.7	13.60	7.1	Start Mixing Tail Slurry				
07/05/2016	12:02:24	270	4.7	13.60	7.2	Wet and Dry Sample Taken				
07/05/2016	12:02:25	274	4.7	13.60	7.3	Wet Sample Weighed				
07/05/2016	12:02:26	269	4.7	13.60	7.3	Good Returns				
07/05/2016	12:02:40	264	4.7	13.57	8.4					
07/05/2016	12:03:10	277	4.7	13.56	10.8					
07/05/2016	12:03:40	526	6.8	13.58	13.7					
07/05/2016	12:04:10	527	7.3	13.57	17.4					
07/05/2016	12:04:40	513	7.4	13.56	21.1					
07/05/2016	12:05:10	522	7.4	13.57	24.8					
07/05/2016	12:05:40	512	7.4	13.57	28.5					
07/05/2016	12:06:10	503	7.4	13.57	32.2					
07/05/2016	12:06:40	506	7.4	13.55	36.0					
07/05/2016	12:07:10	507	7.4	13.50	39.7					
07/05/2016	12:07:40	512	7.4	13.48	43.4					
07/05/2016	12:08:10	505	7.4	13.41	47.1					
07/05/2016	12:08:40	474	7.5	13.40	50.8					
07/05/2016	12:09:10	480	7.4	13.49	54.5					
07/05/2016	12:09:40	497	7.5	13.48	58.2					
07/05/2016	12:10:10	487	7.4	13.47	62.0					
07/05/2016	12:10:40	516	7.4	13.55	65.7					
07/05/2016	12:11:10	522	7.4	13.57	69.4					
07/05/2016	12:11:40	496	7.4	13.57	73.1					
07/05/2016	12:12:10	528	7.4	13.57	76.8					
07/05/2016	12:12:40	549	7.4	13.69	80.5					
07/05/2016	12:13:10	512	7.4	13.50	84.2					
07/05/2016	12:13:40	483	7.4	13.43	88.0					
07/05/2016	12:14:10	478	7.4	13.42	91.7					
07/05/2016	12:14:40	494	7.4	13.43	95.4					
07/05/2016	12:15:10	498	7.4	13.42	99.1					
07/05/2016	12:15:40	490	7.4	13.43	102.8					
07/05/2016	12:16:10	490	7.4	13.43	106.5					
07/05/2016	12:16:40	493	7.4	13.42	110.3					
07/05/2016	12:17:10	503	7.4	13.54	114.0					
07/05/2016	12:17:40	506	7.4	13.53	117.7					
07/05/2016	12:18:10	488	7.4	13.42	121.4					
07/05/2016	12:18:40	487	7.4	13.48	125.1					
07/05/2016	12:19:10	517	7.4	13.56	128.8					
07/05/2016	12:19:40	523	7.4	13.57	132.5					
07/05/2016	12:20:10	507	7.4	13.55	136.2					
07/05/2016	12:20:40	501	7.4	13.54	139.9					
07/05/2016	12:21:10	500	7.4	13.52	143.7					
07/05/2016	12:21:40	491	7.4	13.46	147.4					
07/05/2016	12:22:10	507	7.4	13.50	151.1					
07/05/2016	12:22:40	372	6.1	13.55	154.2					

Well			Field		Job Start	Customer	Job Number
Land Fed 3N-32HZ			DJ		Jul/05/2016	Anadarko	DMBW-00184
Date	Time 24-hr clock	Treating Pressure PSI	Flow Rate B/M	Density LB/G	Volume BBL	Message	
07/05/2016	12:23:40	367	6.1	13.61	160.3		
07/05/2016	12:24:10	391	6.1	13.61	163.4		
07/05/2016	12:24:40	370	6.1	13.60	166.4		
07/05/2016	12:25:10	395	6.1	13.65	169.4		
07/05/2016	12:25:40	379	6.1	13.62	172.5		
07/05/2016	12:26:10	411	6.1	13.60	175.5		
07/05/2016	12:26:40	361	6.1	13.58	178.6		
07/05/2016	12:27:10	403	6.1	13.60	181.6		
07/05/2016	12:27:40	377	6.1	13.63	184.7		
07/05/2016	12:28:10	385	6.1	13.64	187.7		
07/05/2016	12:28:40	369	6.1	13.56	190.7		
07/05/2016	12:29:10	354	6.1	13.57	193.8		
07/05/2016	12:29:40	371	6.1	13.50	196.8		
07/05/2016	12:30:10	378	6.1	13.64	199.9		
07/05/2016	12:30:40	387	6.1	13.69	202.9		
07/05/2016	12:31:10	371	6.1	13.65	206.0		
07/05/2016	12:31:40	359	6.1	13.55	209.0		
07/05/2016	12:32:10	358	6.1	13.52	212.1		
07/05/2016	12:32:40	368	6.1	13.57	215.1		
07/05/2016	12:33:10	358	6.1	13.55	218.2		
07/05/2016	12:33:40	389	6.1	13.57	221.2		
07/05/2016	12:34:10	378	6.1	13.59	224.2		
07/05/2016	12:34:40	379	6.1	13.63	227.3		
07/05/2016	12:35:10	398	6.1	13.64	230.3		
07/05/2016	12:35:40	371	6.1	13.60	233.4		
07/05/2016	12:36:10	275	4.7	13.54	236.2		
07/05/2016	12:36:40	268	4.7	13.55	238.6		
07/05/2016	12:37:10	271	4.7	13.57	240.9		
07/05/2016	12:37:40	265	4.7	13.59	243.3		
07/05/2016	12:38:10	261	4.6	13.58	245.6		
07/05/2016	12:38:30	251	2.4	13.67	247.2	End Tail Slurry	
07/05/2016	12:38:33	251	0.0	12.63	247.3	Reset Total, Vol = 235 bbl	
07/05/2016	12:38:34	89	0.4	8.84	0.0	Drop Top Plug	
07/05/2016	12:38:40	27	0.0	8.90	0.0		
07/05/2016	12:39:10	29	0.0	14.51	0.0		
07/05/2016	12:39:40	29	0.0	14.59	0.0		
07/05/2016	12:40:10	29	0.0	14.62	0.0		
07/05/2016	12:40:40	35	0.0	14.63	0.0		
07/05/2016	12:41:10	46	0.6	13.14	0.0		
07/05/2016	12:41:18	48	0.0	12.13	0.1	Washup Pump and Line	
07/05/2016	12:41:40	61	0.3	11.53	0.1		
07/05/2016	12:42:10	63	0.3	10.45	0.3		
07/05/2016	12:42:40	57	0.2	9.81	0.4		
07/05/2016	12:43:10	49	0.0	9.77	0.5		
07/05/2016	12:43:40	52	0.2	9.66	0.5		
07/05/2016	12:44:10	74	2.0	8.47	1.1		
07/05/2016	12:44:40	75	2.3	8.92	2.2		
07/05/2016	12:45:10	41	1.5	8.52	3.3		
07/05/2016	12:45:40	71	2.2	9.50	4.3		
07/05/2016	12:46:10	283	3.9	9.29	5.4		
07/05/2016	12:46:40	101	2.8	9.41	7.8		
07/05/2016	12:47:10	-32	25.0	2.15	9.6		
07/05/2016	12:47:40	45	0.0	0.01	9.8		
07/05/2016	12:48:10	45	2.3	8.55	10.0		

Well			Field		Job Start	Customer		Job Number
Land Fed 3N-32HZ			DJ		Jul/05/2016	Anadarko		DMBW-00184
Date	Time 24-hr clock	Treating Pressure PSI	Flow Rate B/M	Density LB/G	Volume BBL	Message		
07/05/2016	12:49:10	73	0.0	8.49	12.7			
07/05/2016	12:49:40	14	1.3	8.31	13.9			
07/05/2016	12:50:10	202	4.9	8.43	15.5			
07/05/2016	12:50:40	19	1.3	8.37	17.9			
07/05/2016	12:51:10	23	0.0	8.37	17.9			
07/05/2016	12:51:40	24	0.0	8.37	17.9			
07/05/2016	12:52:10	30	0.0	8.37	17.9			
07/05/2016	12:52:40	30	0.0	8.37	17.9			
07/05/2016	12:53:10	30	0.0	8.37	17.9			
07/05/2016	12:53:40	31	0.0	8.37	17.9			
07/05/2016	12:54:10	78	2.3	8.37	18.2			
07/05/2016	12:54:21	213	6.6	8.36	19.0	Start Displacement		
07/05/2016	12:54:40	211	7.5	8.36	21.3			
07/05/2016	12:55:10	199	7.5	8.37	25.1			
07/05/2016	12:55:40	200	7.5	8.37	28.9			
07/05/2016	12:56:10	204	7.5	8.36	32.6			
07/05/2016	12:56:40	199	7.5	8.36	36.4			
07/05/2016	12:57:10	209	7.5	8.36	40.1			
07/05/2016	12:57:40	203	7.5	8.37	2.5			
07/05/2016	12:58:10	204	7.5	8.37	6.3			
07/05/2016	12:58:40	200	7.5	8.37	10.0			
07/05/2016	12:59:10	205	7.5	8.37	13.8			
07/05/2016	12:59:40	494	7.5	8.37	17.6			
07/05/2016	13:00:10	579	7.5	8.37	21.3			
07/05/2016	13:00:40	610	7.5	8.37	25.1			
07/05/2016	13:01:10	647	7.5	8.37	28.8			
07/05/2016	13:01:40	678	7.5	8.37	32.6			
07/05/2016	13:02:10	714	7.5	8.37	36.3			
07/05/2016	13:02:40	760	7.5	8.37	40.1			
07/05/2016	13:03:10	802	7.5	8.37	43.8			
07/05/2016	13:03:40	857	7.5	8.37	47.6			
07/05/2016	13:04:10	911	7.5	8.37	51.3			
07/05/2016	13:04:40	939	7.5	8.37	55.0			
07/05/2016	13:05:10	985	7.5	8.37	58.8			
07/05/2016	13:05:40	1034	7.4	8.37	62.5			
07/05/2016	13:06:10	1096	7.5	8.37	66.2			
07/05/2016	13:06:40	1129	7.5	8.37	70.0			
07/05/2016	13:07:10	1191	7.5	8.37	73.7			
07/05/2016	13:07:40	1229	7.5	8.37	77.4			
07/05/2016	13:08:10	1287	7.5	8.37	81.1			
07/05/2016	13:08:40	1348	7.5	8.37	84.9			
07/05/2016	13:09:10	1383	7.5	8.37	88.6			
07/05/2016	13:09:40	1414	7.4	8.37	92.3			
07/05/2016	13:10:10	1463	7.4	8.37	96.0			
07/05/2016	13:10:40	1516	7.4	8.37	99.7			
07/05/2016	13:11:10	1574	7.5	8.37	103.5			
07/05/2016	13:11:40	1636	7.4	8.37	107.2			
07/05/2016	13:12:10	1664	7.4	8.37	110.9			
07/05/2016	13:12:40	1732	7.4	8.37	114.6			
07/05/2016	13:13:10	1748	7.4	8.37	118.3			
07/05/2016	13:13:40	1826	7.4	8.37	122.0			
07/05/2016	13:14:10	1846	7.4	8.37	125.7			
07/05/2016	13:14:40	1700	6.1	8.37	129.2			
07/05/2016	13:15:10	1762	6.1	8.37	132.2			

Well			Field	Job Start		Customer		Job Number
Land Fed 3N-32HZ			DJ	Jul/05/2016		Anadarko		DMBW-00184
Date	Time 24-hr clock	Treating Pressure PSI	Flow Rate B/M	Density LB/G	Volume BBL	Message		
07/05/2016	13:16:10	1868	6.1	8.37	138.3			
07/05/2016	13:16:40	1898	6.1	8.37	141.3			
07/05/2016	13:17:10	1878	6.1	8.37	144.4			
07/05/2016	13:17:40	1935	6.1	8.37	147.4			
07/05/2016	13:18:10	2003	6.1	8.37	150.4			
07/05/2016	13:18:40	2060	6.1	8.37	153.5			
07/05/2016	13:19:10	2087	6.1	8.37	156.5			
07/05/2016	13:19:40	1904	4.7	8.37	159.1			
07/05/2016	13:20:10	1983	4.7	8.37	161.5			
07/05/2016	13:20:40	1730	3.3	8.37	163.6			
07/05/2016	13:21:10	1825	3.3	8.37	165.3			
07/05/2016	13:21:40	1730	3.3	8.37	166.9			
07/05/2016	13:22:10	1817	3.3	8.37	168.6			
07/05/2016	13:22:40	1744	3.3	8.37	170.3			
07/05/2016	13:23:10	1853	3.3	8.37	171.9			
07/05/2016	13:23:40	1782	3.3	8.37	173.6			
07/05/2016	13:24:10	1859	3.3	8.37	175.3			
07/05/2016	13:24:40	1835	3.3	8.37	176.9			
07/05/2016	13:25:10	1787	3.3	8.37	178.6			
07/05/2016	13:25:40	1805	3.3	8.37	180.3			
07/05/2016	13:26:10	1855	3.3	8.37	181.9			
07/05/2016	13:26:40	1862	3.3	8.37	183.6			
07/05/2016	13:27:10	1839	3.3	8.37	185.3			
07/05/2016	13:27:40	1859	3.3	8.37	186.9			
07/05/2016	13:28:10	1835	3.3	8.36	188.6			
07/05/2016	13:28:40	1853	3.3	8.36	190.3			
07/05/2016	13:29:10	1868	3.3	8.36	191.9			
07/05/2016	13:29:40	1913	3.3	8.36	193.6			
07/05/2016	13:30:10	1904	3.3	8.37	195.2			
07/05/2016	13:30:40	1943	3.3	8.36	196.9			
07/05/2016	13:31:10	1940	3.3	8.37	198.6			
07/05/2016	13:31:40	1951	3.3	8.37	200.2			
07/05/2016	13:32:10	1847	3.3	8.37	201.9			
07/05/2016	13:32:40	1949	3.3	8.37	203.6			
07/05/2016	13:33:10	1862	3.3	8.37	205.2			
07/05/2016	13:33:40	1890	3.3	8.37	206.9			
07/05/2016	13:34:10	1888	3.3	8.37	208.6			
07/05/2016	13:34:40	1954	3.3	8.36	210.2			
07/05/2016	13:35:10	1959	3.3	8.36	211.9			
07/05/2016	13:35:40	1989	3.3	8.36	213.5			
07/05/2016	13:36:10	1918	3.3	8.36	215.2			
07/05/2016	13:36:40	1929	3.3	8.36	216.9			
07/05/2016	13:37:10	1942	3.3	8.36	218.5			
07/05/2016	13:37:40	1931	3.3	8.37	220.2			
07/05/2016	13:38:10	1964	3.3	8.37	221.9			
07/05/2016	13:38:40	1946	3.3	8.37	223.5			
07/05/2016	13:39:10	2006	3.3	8.37	225.2			
07/05/2016	13:39:40	1985	3.3	8.37	226.8			
07/05/2016	13:40:10	2000	3.3	8.37	228.5			
07/05/2016	13:40:40	1943	3.3	8.37	230.2			
07/05/2016	13:41:10	1967	3.3	8.36	231.8			
07/05/2016	13:41:40	1950	3.3	8.36	233.5			
07/05/2016	13:42:10	2004	3.3	8.37	235.1			
07/05/2016	13:42:40	1947	3.3	8.37	236.8			

Well			Field	Job Start		Customer	Job Number
Land Fed 3N-32HZ			DJ	Jul/05/2016		Anadarko	DMBW-00184
Date	Time 24-hr clock	Treating Pressure PSI	Flow Rate B/M	Density LB/G	Volume BBL	Message	
07/05/2016	13:43:40	2067	3.3	8.37	240.1		
07/05/2016	13:44:10	2072	3.3	8.37	241.8		
07/05/2016	13:44:40	2065	3.3	8.37	243.4		
07/05/2016	13:45:10	2058	3.3	8.37	245.1		
07/05/2016	13:45:40	2043	3.3	8.37	246.8		
07/05/2016	13:46:10	2012	3.3	8.37	248.4		
07/05/2016	13:46:40	1994	3.3	8.37	250.1		
07/05/2016	13:47:10	2050	3.3	8.36	251.7		
07/05/2016	13:47:40	2048	3.3	8.36	253.4		
07/05/2016	13:48:10	2075	3.3	8.37	255.1		
07/05/2016	13:48:40	2064	3.3	8.36	256.7		
07/05/2016	13:49:10	2059	3.3	8.36	258.4		
07/05/2016	13:49:40	2079	3.3	8.37	260.0		
07/05/2016	13:50:10	2093	3.3	8.37	261.7		
07/05/2016	13:50:40	2097	3.3	8.37	263.4		
07/05/2016	13:51:10	2081	3.3	8.37	265.0		
07/05/2016	13:51:40	2125	3.3	8.37	266.7		
07/05/2016	13:52:10	2152	3.3	8.37	268.3		
07/05/2016	13:52:40	2053	3.3	8.37	270.0		
07/05/2016	13:53:10	2118	3.3	8.37	271.6		
07/05/2016	13:53:40	2093	3.3	8.38	273.3		
07/05/2016	13:54:10	2169	3.3	8.37	275.0		
07/05/2016	13:54:40	2138	3.3	8.37	276.6		
07/05/2016	13:55:10	2150	3.3	8.37	278.3		
07/05/2016	13:55:40	2126	3.3	8.37	279.9		
07/05/2016	13:56:10	2108	3.3	8.37	281.6		
07/05/2016	13:56:40	2097	3.3	8.37	283.2		
07/05/2016	13:57:10	2163	3.3	8.37	284.9		
07/05/2016	13:57:40	1993	2.4	8.37	286.3		
07/05/2016	13:58:10	2086	2.4	8.37	287.5		
07/05/2016	13:58:40	2090	2.4	8.37	288.7		
07/05/2016	13:59:10	2550	1.5	8.37	289.9		
07/05/2016	13:59:40	2659	0.0	8.37	289.9		
07/05/2016	14:00:10	2626	0.0	8.37	289.9		
07/05/2016	14:00:34	2668	0.2	8.37	289.9	Bump Top Plug 2000-2600psi	
07/05/2016	14:00:35	2681	0.2	8.37	289.9	Reset Total, Vol = 302 bbl	
07/05/2016	14:00:40	2718	0.4	8.37	0.0		
07/05/2016	14:01:10	2918	0.5	8.37	0.3		
07/05/2016	14:01:40	3031	0.0	8.37	0.4		
07/05/2016	14:01:42	3020	0.0	8.37	0.4	Start 15min, 3000 psi Casing Test	
07/05/2016	14:02:10	3030	0.0	8.37	0.4		
07/05/2016	14:02:40	3044	0.0	8.37	0.4		
07/05/2016	14:03:10	3053	0.0	8.37	0.4		
07/05/2016	14:03:40	3064	0.0	8.37	0.4		
07/05/2016	14:04:10	3077	0.0	8.37	0.4		
07/05/2016	14:04:40	3082	0.0	8.37	0.4		
07/05/2016	14:05:10	3096	0.0	8.37	0.4		
07/05/2016	14:05:40	3103	0.0	8.37	0.4		
07/05/2016	14:06:10	3113	0.0	8.37	0.4		
07/05/2016	14:06:40	3124	0.0	8.36	0.4		
07/05/2016	14:07:10	3132	0.0	8.36	0.4		
07/05/2016	14:07:40	3142	0.0	8.37	0.4		
07/05/2016	14:08:10	3150	0.0	8.37	0.4		
07/05/2016	14:08:40	3159	0.0	8.37	0.4		

Well			Field		Job Start	Customer		Job Number
Land Fed 3N-32HZ			DJ		Jul/05/2016	Anadarko		DMBW-00184
Date	Time 24-hr clock	Treating Pressure PSI	Flow Rate B/M	Density LB/G	Volume BBL	Message		
07/05/2016	14:09:40	3180	0.0	8.37	0.4			
07/05/2016	14:10:10	3189	0.0	8.37	0.4			
07/05/2016	14:10:40	3197	0.0	8.37	0.4			
07/05/2016	14:11:10	3206	0.0	8.37	0.4			
07/05/2016	14:11:40	3214	0.0	8.37	0.4			
07/05/2016	14:12:10	3223	0.0	8.37	0.4			
07/05/2016	14:12:40	3231	0.0	8.37	0.4			
07/05/2016	14:13:10	3239	0.0	8.37	0.4			
07/05/2016	14:13:40	3246	0.0	8.37	0.4			
07/05/2016	14:14:10	3252	0.0	8.37	0.4			
07/05/2016	14:14:40	3260	0.0	8.37	0.4			
07/05/2016	14:15:10	3268	0.0	8.37	0.4			
07/05/2016	14:15:40	3276	0.0	8.37	0.4			
07/05/2016	14:16:10	3284	0.0	8.37	0.4	End Casing Test		
07/05/2016	14:16:40	2902	0.0	8.37	0.4			
07/05/2016	14:17:10	470	0.0	8.37	0.4			
07/05/2016	14:17:26	25	0.0	8.37	0.4	Floats Hold, 3.25 Bbl Back		
07/05/2016	14:17:40	28	0.0	8.37	0.4			
07/05/2016	14:18:05	30	0.0	8.37	0.4	End Job		

Post Job Summary

Average Pump Rates, bbl/min					Volume of Fluid Injected, bbl				
Slurry 5.2	N2	Mud	Maximum Rate 25.0	Total Slurry 392.0	Mud 0.0	Spacer 0.0	N2		
Treating Pressure Summary, psi					Breakdown Fluid				
Maximum 4882	Final 30	Average 1110	Bump Plug to 2600	Breakdown	Type	Volume bbl	Density lb/gal		
Avg. N2 Percent %		Designed Slurry Volume 378.0 bbl		Displacement 302.0 bbl		Mix Water Temp 70 degF			
						Cement Circulated to Surface? <input type="checkbox"/>			
						Washed Thru Perfs <input type="checkbox"/>			
Customer or Authorized Representative			Schlumberger Supervisor Ryan Drilling/Ken Sovereign			Circulation Lost <input type="checkbox"/>	Job Completed <input checked="" type="checkbox"/>		
						-	-		