

HALLIBURTON

iCem[®] Service

SANDRIDGE ENERGY INC EBUSINESS

Date: Friday, June 03, 2016

Mutual 0780 4-8H

Production

Job Date: Tuesday, May 24, 2016

Sincerely,
Lauren Roberts

Legal Notice

Warning Disclaimer

Although the information contained in this report is based on sound engineering practices, the copyright owner(s) does (do) not accept any responsibility whatsoever, in negligence or otherwise, for any loss or damage arising from the possession or use of the report whether in terms of correctness or otherwise. The application, therefore, by the user of this report or any part thereof, is solely at the user's own risk.

Limitations of Liability

Except as expressly set forth herein, there are no representations or warranties by Halliburton, express or implied, including implied warranties of merchantability and/or fitness for a particular purpose. In no event will Halliburton or its suppliers be liable for consequential, incidental, special, punitive or exemplary damages (including, without limitation, loss of data, profits, use of hardware, or software). Customer accepts full responsibility for any investment made based on results from the Software. Any interpretations, analyses or modeling of any data, including, but not limited to Customer data, and any recommendation or decisions based upon such interpretations, analyses or modeling are opinions based upon inferences from measurements and empirical relationships and assumptions, which inferences and assumptions are not infallible, and with respect to which professional may differ. Accordingly, Halliburton cannot and does not warrant the accuracy, correctness or completeness of any such interpretation, recommendation, modeling or other products of the Software Product. As such, any interpretation, recommendation or modeling resulting from the Software for the purpose of any drilling, well treatment, production or financial decision will be at the sole risk of Customer. Under no circumstances will Halliburton or its suppliers be liable for any damages.

Table of Contents

1.0	Cementing Job Summary	4
1.1	Executive Summary	4
2.0	Real-Time Job Summary	7
2.1	Job Event Log	7

1.0 Cementing Job Summary

1.1 Executive Summary

Halliburton appreciates the opportunity to perform the cementing services on the **Mutual 0780 4-8H cement Production** casing job. A pre-job safety meeting was held before the job where details of the job were discussed, potential safety hazards were reviewed, and environmental compliance procedures were outlined.

86 bbl. of cement returned to surface.

Halliburton maintains a continuous quality improvement process and appreciates any comments or suggestions that you may have. Halliburton again thanks you for the opportunity to perform service work on this well. We hope to be your solutions provider for future projects.

Respectfully,

Halliburton [Ft. Lupton]

The Road to Excellence Starts with Safety

Sold To #: 305021	Ship To #: 3722533	Quote #: 0022183636	Sales Order #: 0903307873
Customer: SANDRIDGE ENERGY INC - E-BUS		Customer Rep: John Roghair	
Well Name: MUTUAL		Well #: 0780 4-8H	API/UWI #: 05-057-06541-00
Field:	City (SAP): COALMONT	County/Parish: JACKSON	State: COLORADO
Legal Description: NW NW-17-7N-80W-37FNL-744FWL			
Contractor: XTREME DRLG		Rig/Platform Name/Num: XTREME 20	
Job BOM: 7523			
Well Type: HORIZONTAL OIL			
Sales Person: HALAMERICA/HX41066		Srvc Supervisor: Aaron Smith	

Job

Formation Name			
Formation Depth (MD)	Top		Bottom
Form Type	BHST		
Job depth MD	12576ft	Job Depth TVD	7465
Water Depth		Wk Ht Above Floor	4
Perforation Depth (MD)	From		To

Well Data

Description	New / Used	Size in	ID in	Weight lbm/ft	Thread	Grade	Top MD ft	Bottom MD ft	Top TVD ft	Bottom TVD ft
Casing		9.625	8.921	36	LTC	J-55	0	2378	0	2378
Casing		5.5	4.778	20		P-110	0	12571	0	7465
Open Hole Section			8.75				2387	12576	0	7465

Tools and Accessories

Type	Size in	Qty	Make	Depth ft	Type	Size in	Qty	Make
Guide Shoe	5.5				Top Plug	5.5	1	HWE
Float Shoe	5.5	1	ssii	12571	Bottom Plug	5.5	1	HWE
Float Collar	5.5	1	ssii	12522	SSR plug set	5.5		HES
Insert Float	5.5				Plug Container	5.5		HES
Stage Tool	5.5				Centralizers	5.5		HES

Fluid Data

Stage/Plug #: 1										
Fluid #	Stage Type	Fluid Name	Qty	Qty UoM	Mixing Density lbm/gal	Yield ft3/sack	Mix Fluid Gal	Rate bbl/min	Total Mix Fluid Gal	
1	Tuned Spacer III	Tuned Spacer III	40	bbl	10.6	5.59				

Fluid #	Stage Type	Fluid Name	Qty	Qty UoM	Mixing Density lbm/gal	Yield ft3/sack	Mix Fluid Gal	Rate bbl/min	Total Mix Fluid Gal	
2	TergoVis I	CMT PKG TERGOVIS I	50	bbl	10.6					
3	NeoCem	NeoCem TM	372	bbl	12	2.3		5	12.55	
4	EconoCem	ECONOCEM (TM) SYSTEM	1079	sack	13.5	1.65		5	7.87	
5	Displacement Fluid	Displacement Fluid	277	bbl	8.4					
Cement Left In Pipe		Amount	49 ft		Reason			Shoe Joint		
Comment Had cement to surface, lost returns 14 bbls from bumping plug, 86 bbls cement to surface										

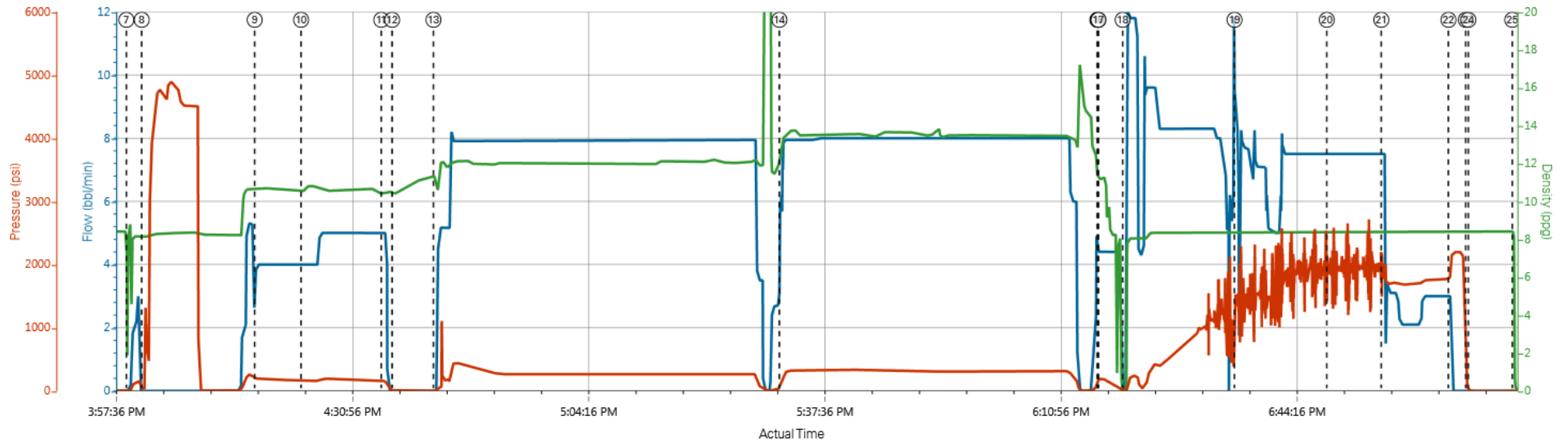
2.0 Real-Time Job Summary

2.1 Job Event Log

Type	Seq. No.	Activity	Graph Label	Date	Time	Source	Comb Pump Rate (bbl/min)	DH Density (ppg)	PS Pump Press (psi)	Comments
Event	1	Call Out	Call Out	5/24/2016	03:00:00	USER				For on location @ 1200
Event	2	Depart from Service Center or Other Site	Depart from Service Center or Other Site	5/24/2016	06:00:00	USER				journey management meeting held, and journey called in to dispatch
Event	3	Arrive at Location from Service Center	Arrive at Location from Service Center	5/24/2016	11:30:00	USER				with all equipment and materials,
Event	4	Rig-Up Equipment	Rig-Up Equipment	5/24/2016	14:00:00	USER				
Event	5	Rig-Up Completed	Rig-Up Completed	5/24/2016	15:00:00	USER	0.00	8.34	-39.00	
Event	6	Pre-Job Safety Meeting	Pre-Job Safety Meeting	5/24/2016	15:30:00	USER	0.00	8.39	2.00	With all essential personnel.
Event	7	Start Job	Start Job	5/24/2016	15:59:21	COM5	0.00	8.56	2.00	With water supplied from day tank, water tested good to mix cement, PH 7, Cl 32 Temp 63.
Event	8	Test Lines	Test Lines	5/24/2016	16:01:30	COM5	0.00	8.14	34.00	@5000 psi
Event	9	Pump Spacer 1	Pump Spacer 1	5/24/2016	16:17:27	COM5	4.00	10.67	213.00	40 bbls Tuned Spacer III, @ 10.6 ppg, verified with pressurized scales
Event	10	Pump Spacer 2	Pump Spacer 2	5/24/2016	16:24:00	COM5	4.00	10.53	160.00	50 bbls TergoVis, @ 10.6 ppg, verified with scales
Event	11	Shutdown	Shutdown	5/24/2016	16:35:20	COM5	5.00	10.44	165.00	
Event	12	Drop Bottom Plug	Drop Bottom Plug	5/24/2016	16:36:52	COM5	0.00	10.40	4.00	Pre-loaded HWE bottom plug in plug container.
Event	13	Pump Lead Cement	Pump Lead Cement	5/24/2016	16:42:41	COM5	0.00	11.35	1.00	371.94 bbls 908 sks NeoCem @ 12ppg verified with scales
Event	14	Pump Tail Cement	Pump Tail Cement	5/24/2016	17:31:31	COM5	5.60	13.09	149.00	317.08 bbls 1079 sks EconoCem @ 13.5 ppg verified with scales
Event	15	Shutdown	Shutdown	5/24/2016	18:16:25	COM5	4.40	11.20	189.00	
Event	16	Clean Lines	Clean Lines	5/24/2016	18:16:31	COM5	4.40	11.24	190.00	wash lines to the pit
Event	17	Drop Top Plug	Drop Top Plug	5/24/2016	18:16:35	COM5	4.40	11.26	189.00	pre-loaded HWE top plug in plug container

Event	18	Pump Displacement	Pump Displacement	5/24/2016	18:20:00	COM5	0.00	-0.26	-1.00	277 bbls fresh water with Cla-web
Event	19	Comment	Comment	5/24/2016	18:35:47	USER	8.30	8.40	1382.00	Pump started cavitating, tried to re-prime pumps, did not fix the issue.
Event	20	Other	Cement Returns to Surface	5/24/2016	18:48:49	COM5	7.50	8.42	1914.00	@177 bbls displacement, 86 bbls of cement to surface due to losing 14 bbls of returns.
Event	21	Comment	Comment	5/24/2016	18:56:30	USER	7.50	8.44	1974.00	Lost returns, lost 14 bbls of returns.
Event	22	Bump Plug	Bump Plug	5/24/2016	19:05:59	COM5	0.00	8.44	2073.00	@500 over, final circulating pressure 1756 psi
Event	23	Other	Check Floats	5/24/2016	19:08:26	COM5	0.00	8.48	18.00	Floats good, 2 bbls back.
Event	24	End Job	End Job	5/24/2016	19:08:47	COM5	0.00	8.44	-1.00	Thanks Aaron Smith and crew
Event	25	Rig-Down Equipment	Rig-Down Equipment	5/24/2016	19:15:00	USER	0.00	0.51	-2.00	
Event	26	Rig-Down Completed	Rig-Down Completed	5/24/2016	19:45:00	USER				
Event	27	Depart Location	Depart Location	5/24/2016	20:15:00	USER				Moved trucks to edge of location to take a reset.

SANDRIDGE ENERGY MUTUAL 0780 4-8H PRODUCTION



Comb Pump Rate (bbl/min) DH Density (ppg) PS Pump Press (psi)

- ① Call Out n/a;n/a,n/a
- ② Depart from Service Center or Other Site n/a;n/a,n/a
- ③ Arrive at Location from Service Center n/a;n/a,n/a
- ④ Rig-Up Equipment n/a;n/a,n/a
- ⑤ Rig-Up Completed 0;8.34;-39
- ⑥ Pre-Job Safety Meeting 0;8.39;2
- ⑦ Start Job 0;8.56;2
- ⑧ Test Lines 0;8.14;34
- ⑨ Pump Spacer 1 4;10.67;213
- ⑩ Pump Spacer 2 4;10.53;160
- ⑪ Shutdown 5;10.44;165
- ⑫ Drop Bottom Plug 0;10.4.4
- ⑬ Pump Lead Cement 0;11.35;1
- ⑭ Pump Tail Cement 5.6;13.09;149
- ⑮ Shutdown 4.4;11.2;189
- ⑯ Clean Lines 4.4;11.24;1

SANDRIDGE ENERGY MUTUAL 0780 4-8H PRODUCTION

