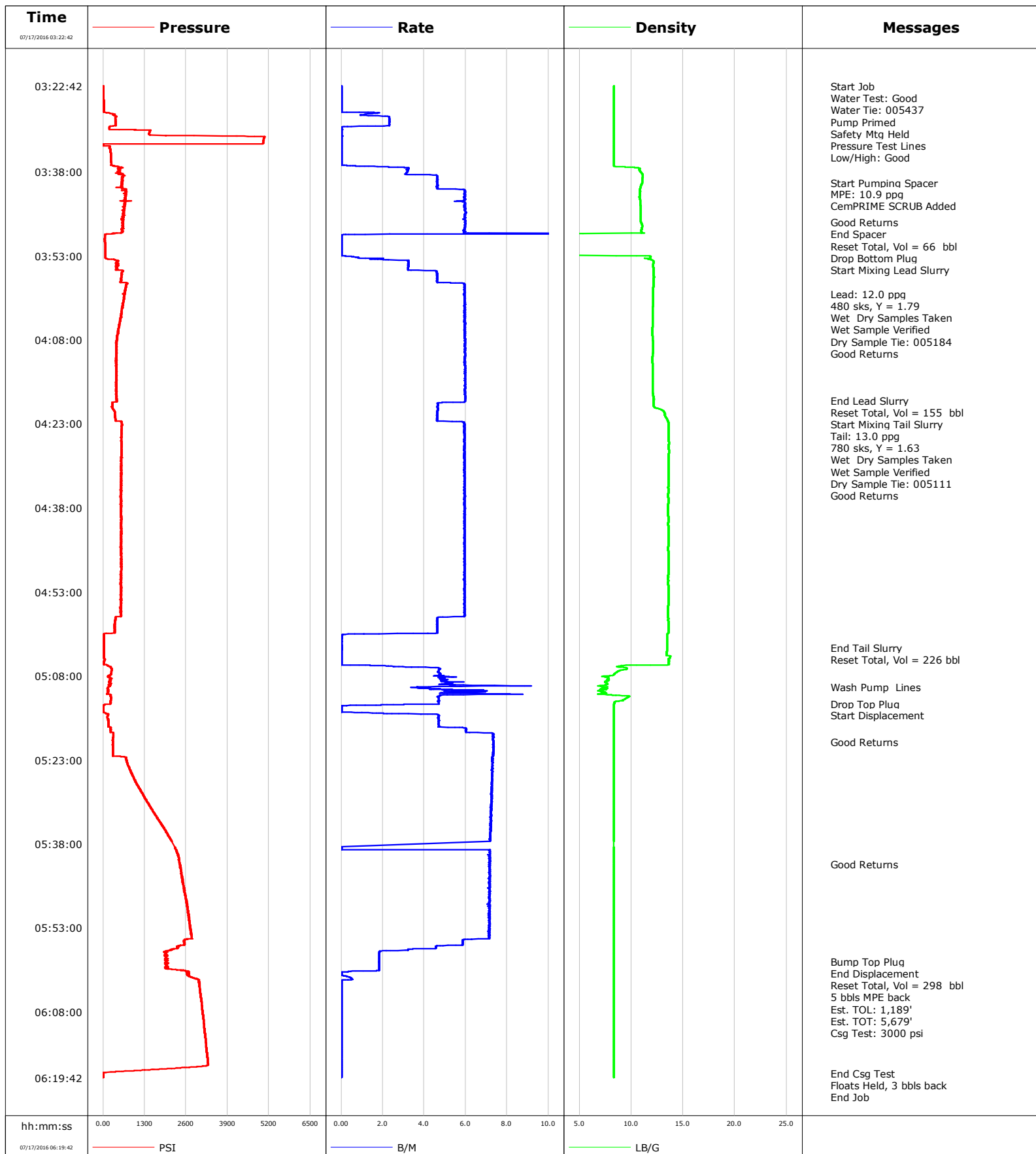


Well Land 28N-19HZ
Field DJ
Engineer matlock/Baird
Country United States

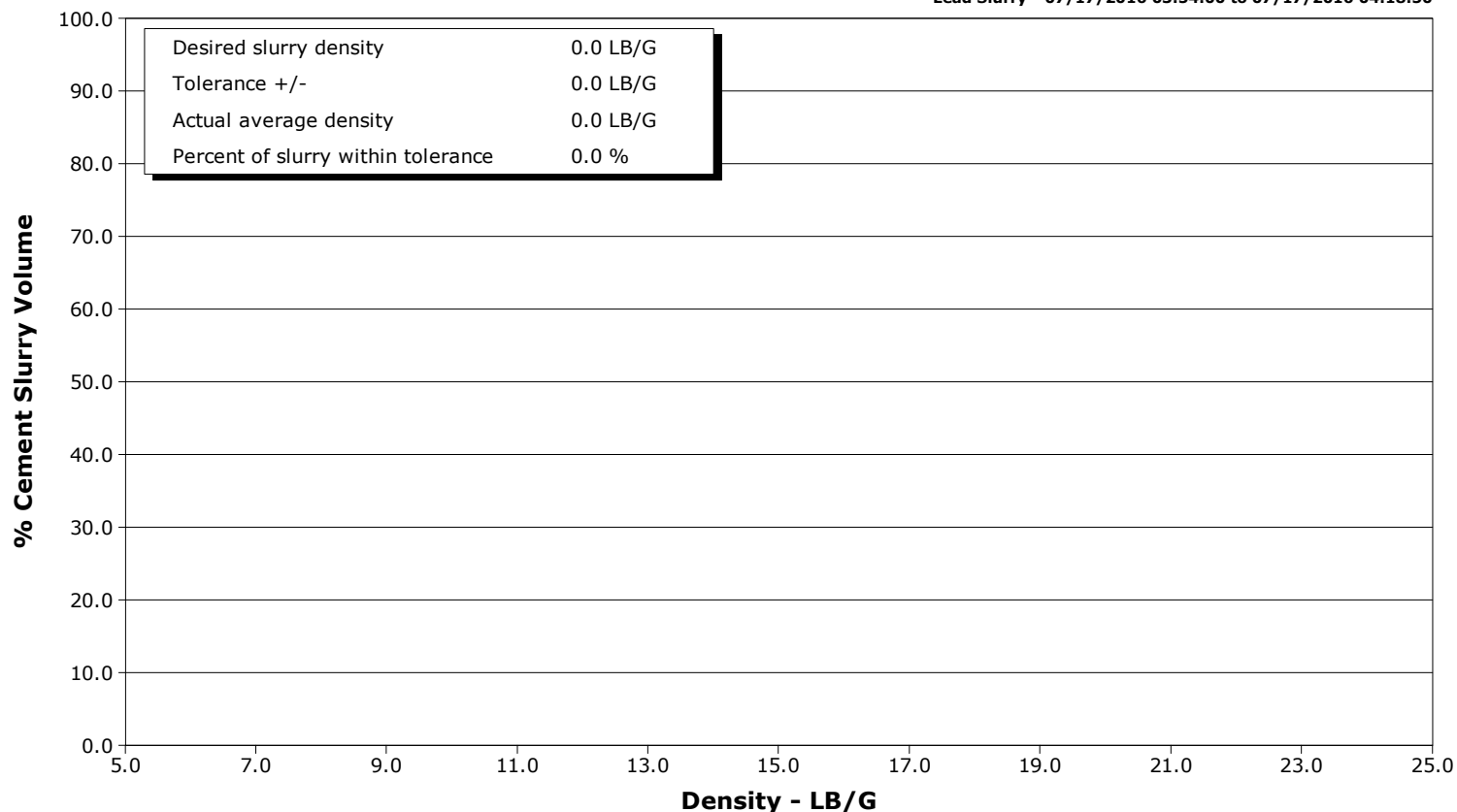
Client Anadarko
SIR No. D399-00001
Job Type Production
Job Date 07-17-2016



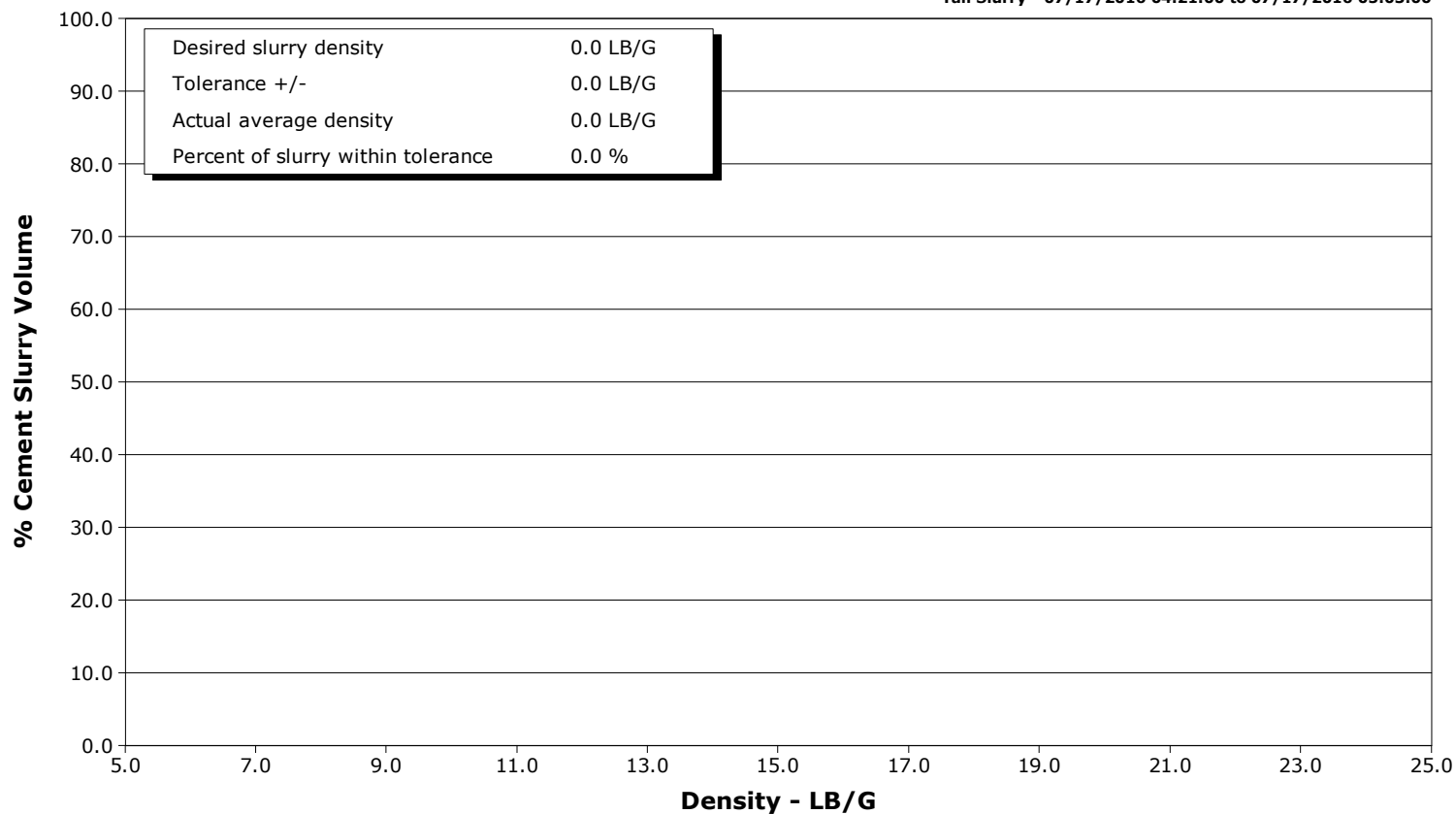
Well Land 28N-19HZ
Field DJ
Engineer matlock/Baird
Country United States

Client Anadarko
SIR No. D399-00001
Job Type Production
Job Date 07-17-2016

Lead Slurry - 07/17/2016 03:54:00 to 07/17/2016 04:18:50



Tail Slurry - 07/17/2016 04:21:00 to 07/17/2016 05:03:00



Cementing Service Report

				Customer Anadarko			Job Number D399-00001						
Well Land 28N-19HZ			Location (legal)			Schlumberger Location Cheyenne			Job Start Jul/17/2016				
Field DJ		Formation Name/Type			Deviation deg		Bit Size 7.9 in		Well MD 12948.0 ft		Well TVD 7235.0 ft		
County Weld		State/Province CO			BHP psi		BHST 227 degF		BHCT 226 degF		Pore Press. Gradient lb/gal		
Well Master 061662937		API/UWI 05123423940000											
Rig Name Precision 461		Drilled For Gas		Service Via Land		Casing/Liner							
						Depth, ft		Size, in		Weight, lb/ft		Grade	
						12948.0		5.5		17.0		P-110	
Offshore Zone		Well Class New		Well Type Development		0.0		0.0		0.0			
Drilling Fluid Type		Max. Density lb/gal		Plastic Viscosity cP		Tubing/Drill Pipe							
						T/D		Depth, ft		Size, in		Weight, lb/ft	
Service Line Cementing		Job Type Production											
Max. Allowed Tub. Press psi		Max. Allowed Ann. Press psi		WH Connection Double Cement head		Perforations/Open Hole							
						Top, ft		Bottom, ft		shot/ft		No. of Shots	
						ft		ft					
						ft		ft				Diameter in	
						Treat Down Casing		Displacement 298.0 bbl		Packer Type		Packer Depth ft	
						Tubing Vol. bbl		Casing Vol. bbl		Annular Vol. bbl		Openhole Vol. bbl	
Casing/Tubing Secured <input checked="" type="checkbox"/>		1 Hole Vol. Circulated prior to Cement <input checked="" type="checkbox"/>				Casing Tools				Squeeze Job			
Lift Pressure psi						Shoe Type Float				Squeeze Type			
Pipe Rotated <input type="checkbox"/>		Pipe Reciprocated <input type="checkbox"/>				Shoe Depth 12938.0 ft				Tool Type			
No. Centralizers		Top Plugs 1		Bottom Plugs 1		Stage Tool Type				Tool Depth ft			
Cement Head Type Double						Stage Tool Depth ft				Tail Pipe Size in			
Job Scheduled For Jul/17/2016 00:00		Arrived on Location Jul/17/2016 00:00		Leave Location Jul/17/2016 07:00		Collar Type Float				Tail Pipe Depth ft			
						Collar Depth 12846.0 ft				Sqz. Total Vol. bbl			
Date	Time 24-hr clock	Treating Pressure PSI	Flow Rate B/M	Density LB/G	Volume BBL	Message							
07/17/2016	03:22:42	2	0.0	8.33	0.0								
07/17/2016	03:22:44	2	0.0	8.33	0.0	Start Job							
07/17/2016	03:22:45	2	0.0	8.33	0.0	Water Test: Good							
07/17/2016	03:22:49	1	0.0	8.33	0.0	Water Tie: 005437							
07/17/2016	03:22:50	2	0.0	8.33	0.0	Pump Primed							
07/17/2016	03:22:52	2	0.0	8.33	0.0	Safety Mtg Held							
07/17/2016	03:23:12	2	0.0	8.33	0.0								
07/17/2016	03:23:42	1	0.0	8.33	0.0								
07/17/2016	03:24:12	1	0.0	8.33	0.0								
07/17/2016	03:24:42	2	0.0	8.32	0.0								
07/17/2016	03:25:12	14	0.0	8.33	0.0								
07/17/2016	03:25:42	17	0.0	8.33	0.0								
07/17/2016	03:26:12	17	0.0	8.33	0.0								
07/17/2016	03:26:42	17	0.0	8.33	0.0								
07/17/2016	03:27:12	17	0.0	8.33	0.0								
07/17/2016	03:27:42	304	1.4	8.32	0.4								
07/17/2016	03:28:12	407	2.3	8.32	1.1								
07/17/2016	03:28:42	385	2.3	8.32	2.3								
07/17/2016	03:29:12	387	2.3	8.32	3.4								
07/17/2016	03:29:42	389	2.3	8.32	4.6								
07/17/2016	03:30:00	203	0.2	8.32	5.1	Pressure Test Lines							

Well			Field	Job Start		Customer	Job Number
Land 28N-19HZ			DJ	Jul/17/2016		Anadarko	D399-00001
Date	Time 24-hr clock	Treating Pressure PSI	Flow Rate B/M	Density LB/G	Volume BBL	Message	
07/17/2016	03:30:42	1473	0.0	8.32	5.1		
07/17/2016	03:31:12	1444	0.0	8.32	5.1		
07/17/2016	03:31:42	4425	0.0	8.32	5.2		
07/17/2016	03:32:12	5033	0.0	8.32	5.2		
07/17/2016	03:32:42	5016	0.0	8.32	5.2		
07/17/2016	03:33:12	5	0.0	8.32	5.2		
07/17/2016	03:33:42	202	0.0	8.32	5.2		
07/17/2016	03:34:42	233	0.0	8.32	5.2		
07/17/2016	03:35:00	236	0.0	8.32	5.2	Low/High: Good	
07/17/2016	03:35:12	234	0.0	8.32	5.2		
07/17/2016	03:35:42	238	0.0	8.32	5.2		
07/17/2016	03:36:12	249	0.0	8.32	5.2		
07/17/2016	03:36:42	252	0.0	8.32	5.2		
07/17/2016	03:37:12	513	2.3	9.44	5.5		
07/17/2016	03:37:42	514	3.2	10.79	7.0		
07/17/2016	03:38:12	457	3.2	10.97	8.6		
07/17/2016	03:38:42	628	4.6	11.10	10.4		
07/17/2016	03:39:12	599	4.6	11.07	12.7		
07/17/2016	03:39:42	596	4.6	11.05	15.0		
07/17/2016	03:40:00	601	4.6	11.06	16.4	Start Pumping Spacer	
07/17/2016	03:40:12	594	4.6	11.00	17.3		
07/17/2016	03:40:42	582	4.6	10.91	19.6		
07/17/2016	03:41:12	687	5.9	10.83	22.0		
07/17/2016	03:41:42	722	6.0	10.83	25.0		
07/17/2016	03:42:00	726	5.9	10.80	26.8	MPE: 10.9 ppg	
07/17/2016	03:42:12	712	6.0	10.80	28.0		
07/17/2016	03:42:42	676	5.9	10.80	31.0		
07/17/2016	03:43:00	688	6.0	10.84	32.7	CemPRIME SCRUB Added	
07/17/2016	03:43:12	590	5.9	10.85	33.9		
07/17/2016	03:43:42	678	6.0	10.87	36.9		
07/17/2016	03:44:12	657	6.0	10.89	39.8		
07/17/2016	03:44:42	655	6.0	10.91	42.8		
07/17/2016	03:45:12	633	6.0	10.91	45.8		
07/17/2016	03:45:42	647	6.0	10.90	48.8		
07/17/2016	03:46:12	641	6.0	10.92	51.8		
07/17/2016	03:46:42	605	6.0	10.90	54.8		
07/17/2016	03:47:00	601	6.0	10.92	56.5	Good Returns	
07/17/2016	03:47:12	632	6.0	10.96	57.7		
07/17/2016	03:47:42	598	6.0	11.04	60.7		
07/17/2016	03:48:00	614	6.0	11.02	62.5	End Spacer	
07/17/2016	03:48:12	647	5.9	11.03	63.7		
07/17/2016	03:48:42	589	6.0	10.96	66.7		
07/17/2016	03:49:00	423	6.1	11.24	68.5	Reset Total, Vol = 66 bbl	
07/17/2016	03:49:12	95	1.2	-0.04	71.1		
07/17/2016	03:49:42	48	0.0	0.39	71.2		
07/17/2016	03:50:12	47	0.0	-0.04	71.2		
07/17/2016	03:50:42	60	0.0	-0.04	71.2		
07/17/2016	03:51:00	69	0.0	-0.04	71.2	Drop Bottom Plug	
07/17/2016	03:51:12	69	0.0	-0.04	71.2		
07/17/2016	03:51:42	67	0.0	-0.04	71.2		
07/17/2016	03:52:12	69	0.0	-0.04	71.2		
07/17/2016	03:52:42	70	0.0	-0.04	71.2		
07/17/2016	03:53:12	74	0.6	11.85	71.3		
07/17/2016	03:53:42	339	1.9	11.85	71.8		

Well			Field	Job Start		Customer		Job Number
Land 28N-19HZ			DJ	Jul/17/2016		Anadarko		D399-00001
Date	Time 24-hr clock	Treating Pressure PSI	Flow Rate B/M	Density LB/G	Volume BBL	Message		
07/17/2016	03:54:12	445	3.2	12.16	73.3			
07/17/2016	03:54:42	473	3.2	12.11	74.9			
07/17/2016	03:55:12	406	3.2	12.14	76.5			
07/17/2016	03:55:42	631	4.5	12.14	78.2			
07/17/2016	03:56:12	585	4.6	12.16	80.5			
07/17/2016	03:56:42	575	4.6	12.18	82.8			
07/17/2016	03:57:12	578	4.6	12.17	85.1			
07/17/2016	03:57:42	540	4.6	12.17	87.4			
07/17/2016	03:58:12	722	5.9	12.15	90.2			
07/17/2016	03:58:42	708	5.9	12.13	93.1			
07/17/2016	03:59:12	681	5.9	12.12	96.1			
07/17/2016	03:59:42	671	5.9	12.11	99.1			
07/17/2016	03:59:48	700	5.9	12.11	99.7	Lead: 12.0 ppg		
07/17/2016	03:59:49	674	5.9	12.11	99.8	480 sks, Y = 1.79		
07/17/2016	03:59:50	657	5.9	12.11	99.9	Wet Dry Samples Taken		
07/17/2016	03:59:51	665	5.9	12.11	100.0	Wet Sample Verified		
07/17/2016	03:59:53	618	5.9	12.11	100.2	Dry Sample Tie: 005184		
07/17/2016	04:00:12	663	5.9	12.11	102.0			
07/17/2016	04:00:42	662	5.9	12.11	105.0			
07/17/2016	04:01:12	639	5.9	12.11	108.0			
07/17/2016	04:01:42	625	6.0	12.09	111.0			
07/17/2016	04:02:12	607	6.0	12.08	113.9			
07/17/2016	04:02:42	585	6.0	12.06	116.9			
07/17/2016	04:03:12	585	5.9	12.06	119.9			
07/17/2016	04:03:42	566	5.9	12.06	122.9			
07/17/2016	04:04:00	556	5.9	12.06	124.7	Good Returns		
07/17/2016	04:04:12	542	6.0	12.05	125.8			
07/17/2016	04:04:42	524	6.0	12.04	128.8			
07/17/2016	04:05:12	518	6.0	12.04	131.8			
07/17/2016	04:05:42	489	5.9	12.04	134.8			
07/17/2016	04:06:12	470	6.0	12.01	137.8			
07/17/2016	04:06:42	471	6.0	12.01	140.7			
07/17/2016	04:07:12	446	6.0	12.03	143.7			
07/17/2016	04:07:42	437	6.0	12.06	146.7			
07/17/2016	04:08:12	416	6.0	12.08	149.7			
07/17/2016	04:08:42	405	6.0	12.10	152.7			
07/17/2016	04:09:12	417	6.0	12.11	155.6			
07/17/2016	04:09:42	416	6.0	12.10	158.6			
07/17/2016	04:10:12	415	6.0	12.09	161.6			
07/17/2016	04:10:42	411	6.0	12.06	164.6			
07/17/2016	04:11:12	410	6.0	12.02	167.6			
07/17/2016	04:11:42	432	6.0	12.00	170.6			
07/17/2016	04:12:12	400	6.0	12.04	173.5			
07/17/2016	04:12:42	413	6.0	12.05	176.5			
07/17/2016	04:13:12	409	6.0	12.05	179.5			
07/17/2016	04:13:42	408	6.0	12.05	182.5			
07/17/2016	04:14:12	421	6.0	12.06	185.5			
07/17/2016	04:14:42	409	6.0	12.06	188.4			
07/17/2016	04:15:12	421	6.0	12.05	191.4			
07/17/2016	04:15:42	413	6.0	12.05	194.4			
07/17/2016	04:16:12	417	6.0	12.06	197.4			
07/17/2016	04:16:42	410	6.0	12.07	200.4			
07/17/2016	04:17:12	403	6.0	12.06	203.4			
07/17/2016	04:17:42	416	6.0	12.09	206.3			

Well			Field	Job Start		Customer	Job Number
Land 28N-19HZ			DJ	Jul/17/2016		Anadarko	D399-00001
Date	Time 24-hr clock	Treating Pressure PSI	Flow Rate B/M	Density LB/G	Volume BBL	Message	
07/17/2016	04:18:42	435	6.0	12.18	212.3		
07/17/2016	04:18:50	425	6.0	12.17	213.1	End Lead Slurry	
07/17/2016	04:19:00	425	6.0	12.16	214.1	Reset Total, Vol = 155 bbl	
07/17/2016	04:19:12	295	5.1	12.16	215.3		
07/17/2016	04:19:42	286	4.7	12.16	217.6		
07/17/2016	04:20:12	290	4.7	12.38	220.0		
07/17/2016	04:20:42	347	4.6	13.09	222.3		
07/17/2016	04:21:00	364	4.6	13.19	223.7	Start Mixing Tail Slurry	
07/17/2016	04:21:12	373	4.6	13.23	224.6		
07/17/2016	04:21:42	373	4.6	13.28	226.9		
07/17/2016	04:22:00	384	4.6	13.38	228.3	Tail: 13.0 ppg	
07/17/2016	04:22:12	390	4.6	13.45	229.2		
07/17/2016	04:22:42	570	5.9	13.56	231.7		
07/17/2016	04:23:00	587	5.9	13.60	233.4	780 sks, Y = 1.63	
07/17/2016	04:23:12	593	5.9	13.60	234.6		
07/17/2016	04:23:42	579	5.9	13.59	237.6		
07/17/2016	04:24:00	574	5.9	13.59	239.4	Wet Dry Samples Taken	
07/17/2016	04:24:12	593	5.9	13.59	240.6		
07/17/2016	04:24:42	581	5.9	13.59	243.5		
07/17/2016	04:25:00	572	5.9	13.58	245.3	Wet Sample Verified	
07/17/2016	04:25:12	573	5.9	13.59	246.5		
07/17/2016	04:25:42	570	5.9	13.59	249.5		
07/17/2016	04:26:00	574	5.9	13.60	251.3	Dry Sample Tie: 005111	
07/17/2016	04:26:12	564	5.9	13.61	252.4		
07/17/2016	04:26:42	572	6.0	13.61	255.4		
07/17/2016	04:27:12	569	5.9	13.59	258.4		
07/17/2016	04:27:42	569	5.9	13.62	261.4		
07/17/2016	04:28:12	587	5.9	13.62	264.3		
07/17/2016	04:28:42	576	5.9	13.60	267.3		
07/17/2016	04:29:12	571	5.9	13.57	270.3		
07/17/2016	04:29:42	566	5.9	13.57	273.2		
07/17/2016	04:30:12	559	5.9	13.58	276.2		
07/17/2016	04:30:42	580	5.9	13.58	279.2		
07/17/2016	04:31:12	562	5.9	13.58	282.1		
07/17/2016	04:31:42	580	5.9	13.59	285.1		
07/17/2016	04:32:12	571	5.9	13.59	288.1		
07/17/2016	04:32:42	573	6.0	13.58	291.1		
07/17/2016	04:32:48	566	6.0	13.59	291.7	Good Returns	
07/17/2016	04:33:12	556	5.9	13.58	294.0		
07/17/2016	04:33:42	567	5.9	13.57	297.0		
07/17/2016	04:34:12	561	5.9	13.57	300.0		
07/17/2016	04:34:42	559	5.9	13.58	303.0		
07/17/2016	04:35:12	567	5.9	13.57	305.9		
07/17/2016	04:35:42	552	5.9	13.54	308.9		
07/17/2016	04:36:12	566	6.0	13.57	311.9		
07/17/2016	04:36:42	555	5.9	13.59	314.8		
07/17/2016	04:37:12	565	5.9	13.57	317.8		
07/17/2016	04:37:42	560	6.0	13.56	320.8		
07/17/2016	04:38:12	554	6.0	13.55	323.8		
07/17/2016	04:38:42	560	5.9	13.55	326.7		
07/17/2016	04:39:12	559	6.0	13.54	329.7		
07/17/2016	04:39:42	576	5.9	13.59	332.7		
07/17/2016	04:40:12	563	5.9	13.59	335.7		
07/17/2016	04:40:42	568	5.9	13.56	338.6		

Well			Field	Job Start		Customer		Job Number
Land 28N-19HZ			DJ	Jul/17/2016		Anadarko		D399-00001
Date	Time 24-hr clock	Treating Pressure PSI	Flow Rate B/M	Density LB/G	Volume BBL	Message		
07/17/2016	04:41:42	584	5.9	13.60	344.6			
07/17/2016	04:42:12	566	5.9	13.60	347.5			
07/17/2016	04:42:42	562	5.9	13.59	350.5			
07/17/2016	04:43:12	558	5.9	13.59	353.5			
07/17/2016	04:43:42	553	6.0	13.59	356.5			
07/17/2016	04:44:12	566	5.9	13.58	359.4			
07/17/2016	04:44:42	556	5.9	13.57	362.4			
07/17/2016	04:45:12	549	6.0	13.56	365.4			
07/17/2016	04:45:42	551	6.0	13.56	368.3			
07/17/2016	04:46:12	567	5.9	13.58	371.3			
07/17/2016	04:46:42	564	6.0	13.58	374.3			
07/17/2016	04:47:12	583	5.9	13.58	377.3			
07/17/2016	04:47:42	567	5.9	13.59	380.2			
07/17/2016	04:48:12	565	5.9	13.60	383.2			
07/17/2016	04:48:42	571	5.9	13.59	386.2			
07/17/2016	04:49:12	561	5.9	13.58	389.2			
07/17/2016	04:49:42	573	5.9	13.58	392.1			
07/17/2016	04:50:12	558	6.0	13.56	395.1			
07/17/2016	04:50:42	548	5.9	13.56	398.1			
07/17/2016	04:51:12	571	6.0	13.55	401.0			
07/17/2016	04:51:42	552	6.0	13.55	404.0			
07/17/2016	04:52:12	569	6.0	13.60	407.0			
07/17/2016	04:52:42	573	5.9	13.59	410.0			
07/17/2016	04:53:12	559	5.9	13.57	412.9			
07/17/2016	04:53:42	561	6.0	13.57	415.9			
07/17/2016	04:54:12	549	5.9	13.58	418.9			
07/17/2016	04:54:42	577	6.0	13.58	421.9			
07/17/2016	04:55:12	557	5.9	13.57	424.8			
07/17/2016	04:55:42	558	5.9	13.56	427.8			
07/17/2016	04:56:12	551	5.9	13.56	430.8			
07/17/2016	04:56:42	566	5.9	13.56	433.7			
07/17/2016	04:57:12	560	6.0	13.56	436.7			
07/17/2016	04:57:42	389	4.6	13.56	439.4			
07/17/2016	04:58:12	369	4.6	13.58	441.7			
07/17/2016	04:58:42	364	4.6	13.58	444.0			
07/17/2016	04:59:12	359	4.6	13.58	446.4			
07/17/2016	04:59:42	367	4.6	13.58	448.7			
07/17/2016	05:00:12	358	4.6	13.57	451.0			
07/17/2016	05:00:42	23	0.0	13.45	452.4			
07/17/2016	05:01:12	23	0.0	13.45	452.4			
07/17/2016	05:01:42	23	0.0	13.44	452.4			
07/17/2016	05:02:12	22	0.0	13.44	452.4			
07/17/2016	05:02:42	23	0.0	13.44	452.4			
07/17/2016	05:03:00	23	0.0	13.44	452.4	End Tail Slurry		
07/17/2016	05:03:12	23	0.0	13.44	452.4			
07/17/2016	05:03:42	23	0.0	13.41	452.4			
07/17/2016	05:04:00	22	0.0	13.41	452.4	Reset Total, Vol = 226 bbl		
07/17/2016	05:04:12	22	0.0	13.41	452.4			
07/17/2016	05:04:42	23	0.0	13.71	452.4			
07/17/2016	05:05:12	46	0.0	13.62	452.4			
07/17/2016	05:05:42	22	0.0	13.61	452.4			
07/17/2016	05:06:12	163	2.1	9.05	452.6			
07/17/2016	05:06:42	271	4.7	9.57	454.3			
07/17/2016	05:07:12	256	4.7	8.70	456.7			

Well			Field	Job Start		Customer	Job Number
Land 28N-19HZ			DJ	Jul/17/2016		Anadarko	D399-00001
Date	Time 24-hr clock	Treating Pressure PSI	Flow Rate B/M	Density LB/G	Volume BBL	Message	
07/17/2016	05:08:12	175	5.3	7.65	461.5		
07/17/2016	05:08:42	217	5.0	7.77	463.9		
07/17/2016	05:09:12	220	5.1	7.50	466.5		
07/17/2016	05:09:42	218	6.1	7.45	469.1		
07/17/2016	05:10:00	169	3.7	7.66	471.0	Wash Pump Lines	
07/17/2016	05:10:12	147	3.8	7.52	471.7		
07/17/2016	05:10:42	151	7.0	7.09	474.2		
07/17/2016	05:11:12	121	8.1	6.92	477.1		
07/17/2016	05:11:42	240	4.7	9.76	480.1		
07/17/2016	05:12:12	241	4.7	9.33	482.4		
07/17/2016	05:12:42	229	4.7	8.38	484.8		
07/17/2016	05:13:00	229	4.7	8.34	486.2	Drop Top Plug	
07/17/2016	05:13:12	37	1.9	8.34	486.9		
07/17/2016	05:13:42	9	0.0	8.34	487.0		
07/17/2016	05:14:12	10	0.0	8.33	487.0		
07/17/2016	05:14:42	92	2.0	8.33	487.2		
07/17/2016	05:15:00	156	4.7	8.33	488.4	Start Displacement	
07/17/2016	05:15:12	144	4.7	8.33	489.3		
07/17/2016	05:15:42	158	4.7	8.33	491.7		
07/17/2016	05:16:12	156	4.7	8.33	494.0		
07/17/2016	05:16:42	158	4.7	8.33	496.4		
07/17/2016	05:17:12	233	5.5	8.33	498.7		
07/17/2016	05:17:42	236	6.0	8.33	501.7		
07/17/2016	05:18:12	320	7.3	8.33	504.8		
07/17/2016	05:18:42	324	7.3	8.33	508.4		
07/17/2016	05:19:12	304	7.3	8.33	512.1		
07/17/2016	05:19:42	300	7.3	8.33	515.8		
07/17/2016	05:19:49	299	7.3	8.32	516.6	Good Returns	
07/17/2016	05:20:12	299	7.3	8.32	519.4		
07/17/2016	05:20:42	298	7.3	8.32	523.1		
07/17/2016	05:21:12	304	7.3	8.32	526.8		
07/17/2016	05:21:42	305	7.3	8.32	530.4		
07/17/2016	05:22:12	298	7.3	8.32	534.1		
07/17/2016	05:22:42	722	7.3	8.32	537.7		
07/17/2016	05:23:12	740	7.3	8.32	541.4		
07/17/2016	05:23:42	773	7.3	8.32	545.0		
07/17/2016	05:24:12	806	7.3	8.32	548.7		
07/17/2016	05:24:42	833	7.3	8.32	552.3		
07/17/2016	05:25:12	872	7.3	8.32	555.9		
07/17/2016	05:25:42	918	7.3	8.32	559.6		
07/17/2016	05:26:12	961	7.3	8.32	563.2		
07/17/2016	05:26:42	999	7.3	8.32	566.9		
07/17/2016	05:27:12	1053	7.3	8.32	570.5		
07/17/2016	05:27:42	1104	7.3	8.32	574.1		
07/17/2016	05:28:12	1151	7.3	8.32	577.7		
07/17/2016	05:28:42	1186	7.3	8.32	581.4		
07/17/2016	05:29:12	1245	7.3	8.32	585.0		
07/17/2016	05:29:42	1300	7.2	8.32	588.6		
07/17/2016	05:30:12	1350	7.2	8.32	592.2		
07/17/2016	05:30:42	1404	7.2	8.32	595.9		
07/17/2016	05:31:12	1462	7.2	8.32	599.5		
07/17/2016	05:31:42	1518	7.2	8.32	603.1		
07/17/2016	05:32:12	1564	7.2	8.32	606.7		
07/17/2016	05:32:42	1611	7.2	8.32	610.3		

Well			Field	Job Start		Customer		Job Number
Land 28N-19HZ			DJ	Jul/17/2016		Anadarko		D399-00001
Date	Time 24-hr clock	Treating Pressure PSI	Flow Rate B/M	Density LB/G	Volume BBL	Message		
07/17/2016	05:33:42	1739	7.2	8.32	617.5			
07/17/2016	05:34:12	1795	7.2	8.32	621.1			
07/17/2016	05:34:42	1854	7.2	8.32	624.7			
07/17/2016	05:35:12	1911	7.2	8.32	628.3			
07/17/2016	05:35:42	1968	7.2	8.32	631.9			
07/17/2016	05:36:12	2018	7.2	8.32	635.5			
07/17/2016	05:36:42	2063	7.2	8.32	639.1			
07/17/2016	05:37:12	2121	7.2	8.32	642.7			
07/17/2016	05:38:42	2262	0.0	8.32	0.0			
07/17/2016	05:39:12	2288	7.1	8.32	657.1			
07/17/2016	05:39:42	2337	7.2	8.32	660.6			
07/17/2016	05:40:12	2357	7.2	8.32	664.2			
07/17/2016	05:40:42	2383	7.2	8.32	667.8			
07/17/2016	05:41:12	2393	7.1	8.32	671.4			
07/17/2016	05:41:34	2410	7.2	8.32	674.0	Good Returns		
07/17/2016	05:41:42	2406	7.1	8.32	675.0			
07/17/2016	05:42:12	2431	7.1	8.33	678.5			
07/17/2016	05:42:42	2438	7.1	8.32	682.1			
07/17/2016	05:43:12	2463	7.2	8.32	685.7			
07/17/2016	05:43:42	2463	7.2	8.32	689.3			
07/17/2016	05:44:12	2482	7.1	8.32	692.8			
07/17/2016	05:44:42	2502	7.2	8.32	696.4			
07/17/2016	05:45:12	2518	7.2	8.32	700.0			
07/17/2016	05:45:42	2537	7.2	8.32	703.6			
07/17/2016	05:46:12	2540	7.1	8.33	707.1			
07/17/2016	05:46:42	2565	7.1	8.32	710.7			
07/17/2016	05:47:12	2583	7.1	8.32	714.3			
07/17/2016	05:47:42	2601	7.1	8.32	717.9			
07/17/2016	05:48:12	2612	7.2	8.32	721.4			
07/17/2016	05:48:42	2622	7.1	8.32	725.0			
07/17/2016	05:49:12	2647	7.2	8.32	728.6			
07/17/2016	05:49:42	2660	7.1	8.32	732.1			
07/17/2016	05:50:12	2666	7.1	8.32	735.7			
07/17/2016	05:50:42	2676	7.1	8.32	739.3			
07/17/2016	05:51:12	2687	7.1	8.32	742.9			
07/17/2016	05:51:42	2697	7.1	8.32	746.4			
07/17/2016	05:52:12	2705	7.1	8.32	750.0			
07/17/2016	05:52:42	2712	7.1	8.32	753.6			
07/17/2016	05:53:12	2737	7.1	8.32	757.1			
07/17/2016	05:53:42	2751	7.1	8.32	760.7			
07/17/2016	05:54:12	2763	7.1	8.32	764.3			
07/17/2016	05:54:42	2773	7.1	8.32	767.8			
07/17/2016	05:55:12	2554	5.9	8.32	771.1			
07/17/2016	05:55:42	2555	5.9	8.32	774.1			
07/17/2016	05:56:12	2350	4.6	8.32	776.9			
07/17/2016	05:56:42	2216	3.9	8.32	779.2			
07/17/2016	05:57:12	1954	1.8	8.32	780.6			
07/17/2016	05:57:42	1953	1.8	8.32	781.6			
07/17/2016	05:58:12	1985	1.8	8.32	782.5			
07/17/2016	05:58:42	1941	1.8	8.32	783.4			
07/17/2016	05:59:00	1989	1.8	8.32	783.9	Bump Top Plug		
07/17/2016	05:59:05	1976	1.8	8.32	784.1	End Displacement		
07/17/2016	05:59:12	1934	1.8	8.32	784.3			
07/17/2016	05:59:30	1990	1.8	8.32	784.8	Reset Total, Vol = 298 bbl		

Well			Field		Job Start	Customer	Job Number
Land 28N-19HZ			DJ		Jul/17/2016	Anadarko	D399-00001
Date	Time 24-hr clock	Treating Pressure PSI	Flow Rate B/M	Density LB/G	Volume BBL	Message	
07/17/2016	05:59:45	1990	1.8	8.32	785.3	5 bbls MPE back	
07/17/2016	05:59:59	1963	1.8	8.32	785.7	Est. TOL: 1,189'	
07/17/2016	06:00:00	1963	1.8	8.32	785.8	Est. TOT: 5,679'	
07/17/2016	06:00:12	1948	1.8	8.32	786.1		
07/17/2016	06:00:42	2685	0.5	8.32	787.0		
07/17/2016	06:01:12	2632	0.0	8.32	787.1		
07/17/2016	06:01:42	2730	0.4	8.32	787.1		
07/17/2016	06:02:12	3007	0.5	8.32	787.4		
07/17/2016	06:02:42	2997	0.0	8.32	787.4		
07/17/2016	06:03:12	3025	0.0	8.32	787.4		
07/17/2016	06:03:42	3029	0.0	8.32	787.4		
07/17/2016	06:04:12	3040	0.0	8.32	787.4		
07/17/2016	06:04:42	3050	0.0	8.32	787.4		
07/17/2016	06:05:12	3061	0.0	8.32	787.4		
07/17/2016	06:05:16	3064	0.0	8.32	787.4	Csg Test: 3000 psi	
07/17/2016	06:05:42	3071	0.0	8.32	787.4		
07/17/2016	06:06:12	3079	0.0	8.32	787.4		
07/17/2016	06:06:42	3092	0.0	8.32	787.4		
07/17/2016	06:07:12	3101	0.0	8.32	787.4		
07/17/2016	06:07:42	3111	0.0	8.32	787.4		
07/17/2016	06:08:12	3122	0.0	8.32	787.4		
07/17/2016	06:08:42	3131	0.0	8.32	787.4		
07/17/2016	06:09:12	3141	0.0	8.32	787.4		
07/17/2016	06:09:42	3149	0.0	8.32	787.4		
07/17/2016	06:10:12	3159	0.0	8.32	787.4		
07/17/2016	06:10:42	3168	0.0	8.32	787.4		
07/17/2016	06:11:12	3177	0.0	8.32	787.4		
07/17/2016	06:11:42	3187	0.0	8.32	787.4		
07/17/2016	06:12:12	3196	0.0	8.32	787.4		
07/17/2016	06:12:42	3205	0.0	8.32	787.4		
07/17/2016	06:13:12	3214	0.0	8.32	787.4		
07/17/2016	06:13:42	3224	0.0	8.32	787.4		
07/17/2016	06:14:12	3232	0.0	8.32	787.4		
07/17/2016	06:14:42	3241	0.0	8.32	787.4		
07/17/2016	06:15:12	3250	0.0	8.32	787.4		
07/17/2016	06:15:42	3259	0.0	8.32	787.4		
07/17/2016	06:16:12	3268	0.0	8.32	787.4		
07/17/2016	06:16:42	3274	0.0	8.32	787.4		
07/17/2016	06:17:12	3283	0.0	8.32	787.4		
07/17/2016	06:17:42	3049	0.0	8.32	787.4		
07/17/2016	06:18:12	1742	0.0	8.32	787.4		
07/17/2016	06:18:42	270	0.0	8.32	787.4		
07/17/2016	06:18:55	5	0.0	8.32	787.4	End Csg Test	
07/17/2016	06:19:08	7	0.0	8.32	787.4	Floats Held, 3 bbls back	
07/17/2016	06:19:12	8	0.0	8.32	787.4		
07/17/2016	06:19:31	8	0.0	8.32	787.4	End Job	

Well Land 28N-19HZ	Field DJ	Job Start Jul/17/2016	Customer Anadarko	Job Number D399-00001
------------------------------	--------------------	---------------------------------	-----------------------------	---------------------------------

Post Job Summary

Average Pump Rates, bbl/min					Volume of Fluid Injected, bbl			
Slurry 5.6	N2	Mud 0.0	Maximum Rate 25.0	Total Slurry 381.0	Mud 0.0	Spacer 66.0	N2	
Treating Pressure Summary, psi					Breakdown Fluid			
Maximum 5064	Final 0	Average 1059	Bump Plug to 2200	Breakdown	Type	Volume bbl	Density lb/gal	
Avg. N2 Percent %	Designed Slurry Volume 376.0 bbl	Displacement 298.0 bbl	Mix Water Temp 74 degF	Cement Circulated to Surface? <input type="checkbox"/>		Volume bbl		
				Washed Thru Perfs <input type="checkbox"/>		To ft		
Customer or Authorized Representative James Grober			Schlumberger Supervisor matlock/Baird			Circulation Lost <input type="checkbox"/>	Job Completed <input checked="" type="checkbox"/>	
						-	-	