

#### WELL DETAILS: Land 28N-29HZ

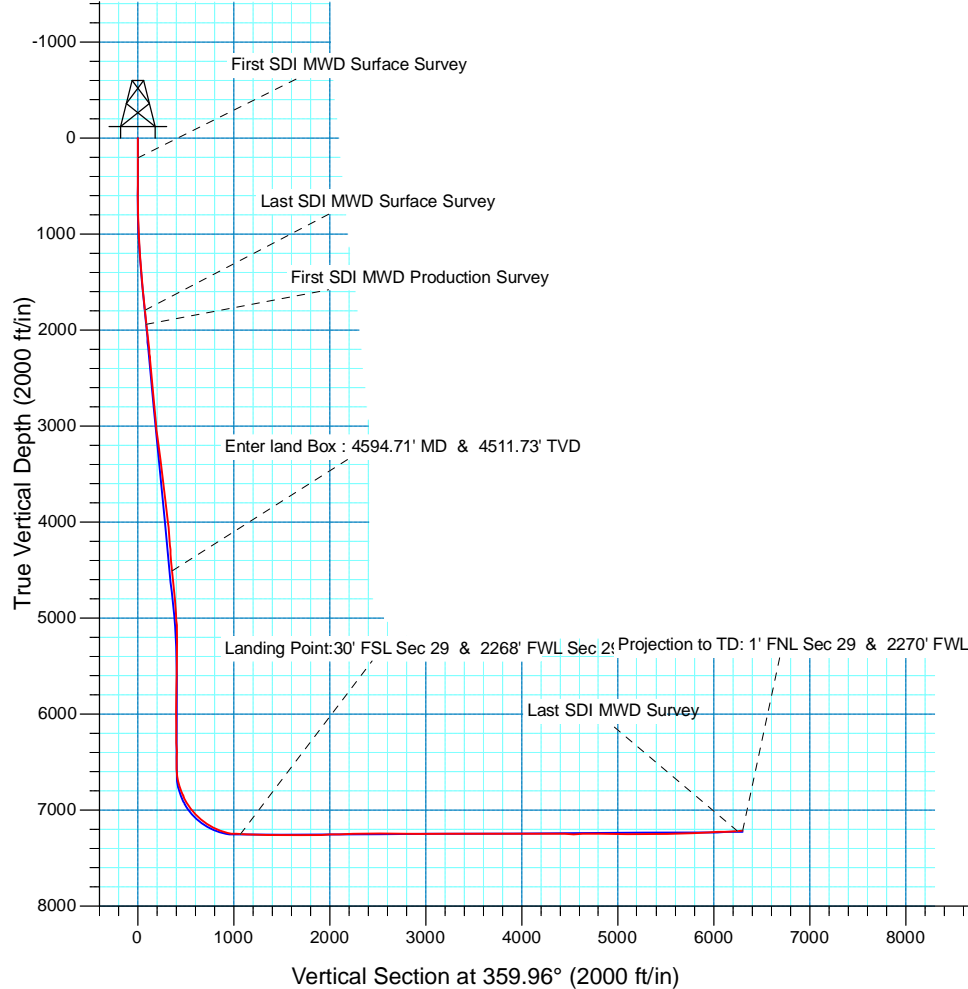
GL 4899' & KB 20' @ 4919.00ft (Precision 461) 4899.00  
 Northing 14562852.44 Easting 1694892.00 Latitude 40.0990250 Longitude -104.8051990

Design: OH (Land 28N-29HZ/OH)

Created By: Seth Burstad Date: 7-19-2016

#### ANNOTATIONS

TVD	MD	Inc	Azi	+N/-S	+E/-W	Annotation
213.00	213.00	0.36	290.03	0.23	-0.63	First SDI MWD Surface Survey
1794.42	1806.00	9.88	59.93	76.12	132.73	Last SDI MWD Surface Survey
1941.91	1956.00	11.11	55.12	90.83	155.73	First SDI MWD Production Survey
4511.73	4594.71	11.39	59.54	362.11	684.86	Enter land Box : 4594.71' MD & 4511.73' TVD
7255.38	7710.00	87.85	0.22	1069.49	768.52	Landing Point: 30' FSL Sec 29 & 2268' FWL Sec 29
7220.91	12895.00	93.23	358.25	6252.53	759.53	Last SDI MWD Survey
7217.92	12948.00	93.23	358.25	6305.42	757.92	Projection to TD: 1' FNL Sec 29 & 2270' FWL Sec 29



n to TD: 1' FNL Sec 29 & 2270' FWL Sec 29

BHL:  
 1' FNL Sec 29  
 2270' FWL Sec 29  
 MD: 12,948'  
 TVD: 7,217.92'  
 Lat: 40.1163405  
 Long: -104.8024880

#### PROJECT DETAILS: US Rockies Wattenberg Planning

Geodetic System: Universal Transverse Mercator (US Survey Feet)  
 Datum: North American Datum 1983  
 Ellipsoid: GRS 1980  
 Zone: Zone 13N (108 W to 102 W)  
 System Datum: Mean Sea Level  
 Local North: True

South(-)/North(+) (1000 ft/in)

Landing Point:  
 30' FSL Sec 29  
 2268' FWL Sec 29  
 MD: 7,710'  
 TVD: 7,255.38'  
 Lat: 40.1019619  
 Long: -104.8024507

Surface Hole:  
 1040' FNL 1499' FWL  
 Sec 32 T2N R66W

Landing Point: 30' FSL Sec 29 & 2268' FWL Sec 29

Enter land Box : 4594.71' MD & 4511.73' TVD

West(-)/East(+) (1000 ft/in)



# **US ROCKIES REGION PLANNING**

**US Rockies Wattenberg Planning**

**Land 18-32HZ Pad 2N-66W-32**

**Land 28N-29HZ**

**OH**

**Design: OH**

## **Standard Survey Report**

**19 July, 2016**



<b>Company:</b>	US ROCKIES REGION PLANNING	<b>Local Co-ordinate Reference:</b>	Well Land 28N-29HZ
<b>Project:</b>	US Rockies Wattenberg Planning	<b>TVD Reference:</b>	GL 4899' & KB 20' @ 4919.00ft (Precision 461)
<b>Site:</b>	Land 18-32HZ Pad 2N-66W-32	<b>MD Reference:</b>	GL 4899' & KB 20' @ 4919.00ft (Precision 461)
<b>Well:</b>	Land 28N-29HZ	<b>North Reference:</b>	True
<b>Wellbore:</b>	OH	<b>Survey Calculation Method:</b>	Minimum Curvature
<b>Design:</b>	OH	<b>Database:</b>	Denver Sales Office

<b>Project</b>	US Rockies Wattenberg Planning		
<b>Map System:</b>	Universal Transverse Mercator (US Survey Feet)	<b>System Datum:</b>	Mean Sea Level
<b>Geo Datum:</b>	North American Datum 1983		
<b>Map Zone:</b>	Zone 13N (108 W to 102 W)		

Site		Land 18-32HZ Pad 2N-66W-32, Site Center: Land Fed 30C-29HZ			
Site Position:		Northing:	14,562,853.50 usft	Latitude:	40.0990290
From:	Lat/Long	Easting:	1,694,712.19 usft	Longitude:	-104.8058420
Position Uncertainty:	0.00 ft	Slot Radius:	13.200 in	Grid Convergence:	0.13 °

Well	Land 28N-29HZ, 1040' FNL 1499' FWL Sec 32 T2N R66W					
Well Position	+N/-S	0.00 ft	Northing:	14,562,852.43 usft	Latitude:	40.0990250
	+E/-W	0.00 ft	Easting:	1,694,892.00 usft	Longitude:	-104.8051990
Position Uncertainty		0.00 ft	Wellhead Elevation:	0.00 ft	Ground Level:	4,899.00 ft

<b>Wellbore</b>	OH				
Magnetics	Model Name	Sample Date	Declination (°)	Dip Angle (°)	Field Strength (nT)
	User Defined	5/19/2016	8.34	66.69	52,585
	User Defined	7/12/2016	8.33	66.70	52,595

<b>Design</b>	OH				
<b>Audit Notes:</b>					
<b>Version:</b>	1.0	<b>Phase:</b>	ACTUAL	<b>Tie On Depth:</b>	0.00
Vertical Section:	Depth From (TVD) (ft)	+N/-S (ft)	+E/-W (ft)	Direction (°)	
	0.00	0.00	0.00		359.96

<b>Survey Program</b>	<b>Date</b>	7/19/2016			
From (ft)	To (ft)	Survey (Wellbore)	Tool Name	Description	
213.00	1,806.00	Survey #1 - Surface (OH)	APC_ISCWSA REV 2 MWD+ Fixed.v2:crustal field declination		
1,956.00	12,948.00	Survey #2 - Production (OH)	APC_ISCWSA REV 2 MWD+ Fixed.v2:crustal field declination		

<b>Survey</b>									
Measured Depth (ft)	Inclination (°)	Azimuth (°)	Vertical Depth (ft)	+N/-S (ft)	+E/-W (ft)	Vertical Section (ft)	Dogleg Rate (°/100usft)	Build Rate (°/100usft)	Turn Rate (°/100usft)
0.00	0.00	0.00	0.00	0.00	0.00	0.00	0.00	0.00	0.00
213.00	0.36	290.03	213.00	0.23	-0.63	0.23	0.17	0.17	0.00
<b>First SDI MWD Surface Survey</b>									
307.00	0.35	259.56	307.00	0.28	-1.19	0.28	0.20	-0.01	-32.41
401.00	0.84	290.34	400.99	0.47	-2.12	0.47	0.60	0.52	32.74
495.00	1.06	275.52	494.98	0.79	-3.63	0.79	0.35	0.23	-15.77
589.00	0.81	65.74	588.97	1.15	-3.89	1.15	1.92	-0.27	159.81
683.00	2.76	76.04	682.92	1.96	-1.09	1.97	2.09	2.07	10.96

<b>Company:</b>	US ROCKIES REGION PLANNING	<b>Local Co-ordinate Reference:</b>	Well Land 28N-29HZ
<b>Project:</b>	US Rockies Wattenberg Planning	<b>TVD Reference:</b>	GL 4899' & KB 20' @ 4919.00ft (Precision 461)
<b>Site:</b>	Land 18-32HZ Pad 2N-66W-32	<b>MD Reference:</b>	GL 4899' & KB 20' @ 4919.00ft (Precision 461)
<b>Well:</b>	Land 28N-29HZ	<b>North Reference:</b>	True
<b>Wellbore:</b>	OH	<b>Survey Calculation Method:</b>	Minimum Curvature
<b>Design:</b>	OH	<b>Database:</b>	Denver Sales Office

Survey									
Measured Depth (ft)	Inclination (°)	Azimuth (°)	Vertical Depth (ft)	+N/-S (ft)	+E/-W (ft)	Vertical Section (ft)	Dogleg Rate (°/100usft)	Build Rate (°/100usft)	Turn Rate (°/100usft)
777.00	4.15	72.98	776.75	3.51	4.36	3.50	1.49	1.48	-3.26
871.00	5.48	67.19	870.42	6.24	11.75	6.23	1.50	1.41	-6.16
965.00	6.89	62.11	963.87	10.62	20.87	10.61	1.61	1.50	-5.40
1,059.00	7.64	65.49	1,057.11	15.85	31.54	15.83	0.92	0.80	3.60
1,153.00	7.28	63.69	1,150.32	21.08	42.57	21.05	0.46	-0.38	-1.91
1,247.00	6.77	63.58	1,243.61	26.19	52.87	26.15	0.54	-0.54	-0.12
1,341.00	7.61	53.95	1,336.88	32.32	62.86	32.27	1.56	0.89	-10.24
1,434.00	9.23	55.80	1,428.87	40.13	74.01	40.08	1.77	1.74	1.99
1,528.00	11.09	58.91	1,521.39	49.04	87.99	48.98	2.06	1.98	3.31
1,624.00	10.94	59.79	1,615.62	58.39	103.77	58.32	0.23	-0.16	0.92
1,719.00	11.08	57.28	1,708.88	67.86	119.24	67.78	0.53	0.15	-2.64
1,806.00	9.88	59.93	1,794.42	76.12	132.73	76.03	1.49	-1.38	3.05
Last SDI MWD Surface Survey									
1,956.00	11.11	55.12	1,941.91	90.83	155.73	90.72	1.01	0.82	-3.21
First SDI MWD Production Survey									
2,050.00	12.59	54.98	2,033.91	101.89	171.55	101.77	1.57	1.57	-0.15
2,144.00	11.96	56.52	2,125.76	113.14	188.06	113.01	0.76	-0.67	1.64
2,240.00	12.24	62.86	2,219.63	123.27	205.41	123.13	1.41	0.29	6.60
2,335.00	14.18	68.05	2,312.12	132.22	225.17	132.06	2.39	2.04	5.46
2,430.00	14.79	69.20	2,404.10	140.87	247.30	140.70	0.71	0.64	1.21
2,525.00	13.11	68.49	2,496.29	149.13	268.66	148.94	1.78	-1.77	-0.75
2,620.00	13.96	69.63	2,588.65	157.07	289.43	156.87	0.94	0.89	1.20
2,714.00	13.34	69.07	2,680.00	164.89	310.18	164.67	0.67	-0.66	-0.60
2,809.00	14.05	68.43	2,772.30	173.04	331.15	172.81	0.76	0.75	-0.67
2,903.00	13.00	69.08	2,863.69	181.01	351.63	180.77	1.13	-1.12	0.69
2,997.00	15.72	67.30	2,954.74	189.71	373.26	189.44	2.93	2.89	-1.89
3,091.00	15.01	63.14	3,045.38	200.12	395.87	199.84	1.39	-0.76	-4.43
3,186.00	14.78	58.30	3,137.20	212.05	417.15	211.75	1.33	-0.24	-5.09
3,281.00	13.83	58.88	3,229.25	224.28	437.18	223.98	1.01	-1.00	0.61
3,376.00	14.05	55.27	3,321.45	236.72	456.38	236.40	0.94	0.23	-3.80
3,470.00	13.20	59.20	3,412.81	248.72	474.98	248.39	1.34	-0.90	4.18
3,565.00	13.66	61.55	3,505.21	259.61	494.16	259.27	0.75	0.48	2.47
3,657.00	12.38	60.20	3,594.84	269.69	512.27	269.33	1.43	-1.39	-1.47
3,752.00	13.38	58.11	3,687.45	280.56	530.44	280.19	1.16	1.05	-2.20
3,846.00	13.33	58.33	3,778.91	292.00	548.90	291.61	0.08	-0.05	0.23
3,941.00	11.71	54.42	3,871.65	303.36	566.06	302.96	1.92	-1.71	-4.12
4,035.00	12.30	62.77	3,963.60	313.49	582.72	313.08	1.95	0.63	8.88
4,130.00	10.96	68.05	4,056.65	321.49	600.10	321.07	1.80	-1.41	5.56
4,223.00	11.28	62.75	4,147.91	328.96	616.38	328.53	1.15	0.34	-5.70
4,319.00	11.45	66.11	4,242.03	337.12	633.44	336.68	0.71	0.18	3.50
4,414.00	12.68	64.32	4,334.93	345.46	651.46	345.00	1.35	1.29	-1.88
4,507.00	11.80	64.90	4,425.81	353.92	669.27	353.45	0.96	-0.95	0.62
4,594.71	11.39	59.54	4,511.73	362.11	684.86	361.63	1.31	-0.47	-6.11
Enter land Box : 4594.71' MD & 4511.73' TVD									

<b>Company:</b>	US ROCKIES REGION PLANNING	<b>Local Co-ordinate Reference:</b>	Well Land 28N-29HZ
<b>Project:</b>	US Rockies Wattenberg Planning	<b>TVD Reference:</b>	GL 4899' & KB 20' @ 4919.00ft (Precision 461)
<b>Site:</b>	Land 18-32HZ Pad 2N-66W-32	<b>MD Reference:</b>	GL 4899' & KB 20' @ 4919.00ft (Precision 461)
<b>Well:</b>	Land 28N-29HZ	<b>North Reference:</b>	True
<b>Wellbore:</b>	OH	<b>Survey Calculation Method:</b>	Minimum Curvature
<b>Design:</b>	OH	<b>Database:</b>	Denver Sales Office

Survey										
Measured Depth (ft)	Inclination (°)	Azimuth (°)	Vertical Depth (ft)	+N/-S (ft)	+E/-W (ft)	Vertical Section (ft)	Dogleg Rate (°/100usft)	Build Rate (°/100usft)	Turn Rate (°/100usft)	
4,602.00	11.36	59.08	4,518.88	362.84	686.10	362.37	1.31	-0.41	-6.33	
4,697.00	9.39	56.16	4,612.32	371.97	700.56	371.48	2.15	-2.07	-3.07	
4,791.00	10.23	51.20	4,704.95	381.47	713.44	380.97	1.27	0.89	-5.28	
4,886.00	8.53	51.32	4,798.68	391.16	725.51	390.65	1.79	-1.79	0.13	
4,979.00	8.09	59.32	4,890.70	398.81	736.52	398.29	1.33	-0.47	8.60	
5,072.00	6.93	60.34	4,982.90	404.92	747.03	404.40	1.26	-1.25	1.10	
5,167.00	5.46	70.51	5,077.35	409.27	756.27	408.74	1.93	-1.55	10.71	
5,261.00	3.72	66.96	5,171.05	411.95	763.29	411.42	1.87	-1.85	-3.78	
5,355.00	2.00	87.16	5,264.93	413.23	767.74	412.69	2.09	-1.83	21.49	
5,449.00	0.90	177.36	5,358.90	412.57	769.41	412.04	2.34	-1.17	95.96	
5,542.00	1.00	165.17	5,451.89	411.06	769.65	410.52	0.24	0.11	-13.11	
5,637.00	1.08	172.18	5,546.88	409.37	769.98	408.83	0.16	0.08	7.38	
5,732.00	0.35	252.35	5,641.87	408.40	769.83	407.86	1.13	-0.77	84.39	
5,828.00	0.88	207.78	5,737.86	407.65	769.21	407.12	0.71	0.55	-46.43	
5,921.00	1.19	223.70	5,830.85	406.32	768.21	405.79	0.45	0.33	17.12	
6,016.00	0.81	268.88	5,925.84	405.60	766.85	405.06	0.89	-0.40	47.56	
6,111.00	1.31	319.55	6,020.82	406.41	765.48	405.88	1.07	0.53	53.34	
6,205.00	0.65	305.13	6,114.81	407.54	764.34	407.00	0.74	-0.70	-15.34	
6,298.00	0.20	325.52	6,207.80	407.97	763.82	407.44	0.50	-0.48	21.92	
6,391.00	0.24	292.43	6,300.80	408.18	763.55	407.65	0.14	0.04	-35.58	
6,484.00	0.57	23.76	6,393.80	408.68	763.56	408.15	0.67	0.35	98.20	
6,578.00	0.54	31.90	6,487.80	409.48	763.98	408.95	0.09	-0.03	8.66	
6,671.00	0.24	65.90	6,580.79	409.94	764.39	409.40	0.39	-0.32	36.56	
6,765.00	11.13	4.22	6,674.20	419.09	765.24	418.56	11.72	11.59	-65.62	
6,859.00	17.55	3.17	6,765.22	442.31	766.69	441.78	6.84	6.83	-1.12	
6,952.00	23.71	1.64	6,852.22	475.04	768.00	474.50	6.65	6.62	-1.65	
7,046.00	32.45	356.94	6,935.08	519.20	767.20	518.67	9.58	9.30	-5.00	
7,140.00	38.96	359.25	7,011.38	574.00	765.46	573.46	7.07	6.93	2.46	
7,235.00	47.46	359.99	7,080.55	638.98	765.06	638.44	8.96	8.95	0.78	
7,331.00	55.73	2.54	7,140.14	714.11	766.82	713.58	8.86	8.61	2.66	
7,425.00	63.13	0.30	7,187.92	794.96	768.76	794.42	8.13	7.87	-2.38	
7,520.00	72.03	359.83	7,224.12	882.69	768.85	882.15	9.38	9.37	-0.49	
7,615.00	81.06	359.77	7,246.20	974.99	768.53	974.45	9.51	9.51	-0.06	
7,710.00	87.85	0.22	7,255.38	1,069.49	768.52	1,068.95	7.16	7.15	0.47	
Landing Point:30' FSL Sec 29 & 2268' FWL Sec 29										
7,804.00	88.65	359.91	7,258.25	1,163.44	768.63	1,162.90	0.91	0.85	-0.33	
7,899.00	88.48	359.95	7,260.62	1,258.41	768.51	1,257.87	0.18	-0.18	0.04	
7,993.00	89.19	0.42	7,262.54	1,352.39	768.81	1,351.85	0.91	0.76	0.50	
8,086.00	89.19	0.13	7,263.85	1,445.38	769.26	1,444.84	0.31	0.00	-0.31	
8,180.00	90.64	0.96	7,263.99	1,539.37	770.15	1,538.83	1.78	1.54	0.88	
8,274.00	90.00	1.37	7,263.47	1,633.35	772.07	1,632.81	0.81	-0.68	0.44	
8,368.00	90.97	0.81	7,262.67	1,727.33	773.85	1,726.79	1.19	1.03	-0.60	
8,557.00	90.20	1.44	7,260.74	1,916.28	777.56	1,915.74	0.53	-0.41	0.33	

<b>Company:</b>	US ROCKIES REGION PLANNING	<b>Local Co-ordinate Reference:</b>	Well Land 28N-29HZ
<b>Project:</b>	US Rockies Wattenberg Planning	<b>TVD Reference:</b>	GL 4899' & KB 20' @ 4919.00ft (Precision 461)
<b>Site:</b>	Land 18-32HZ Pad 2N-66W-32	<b>MD Reference:</b>	GL 4899' & KB 20' @ 4919.00ft (Precision 461)
<b>Well:</b>	Land 28N-29HZ	<b>North Reference:</b>	True
<b>Wellbore:</b>	OH	<b>Survey Calculation Method:</b>	Minimum Curvature
<b>Design:</b>	OH	<b>Database:</b>	Denver Sales Office

Survey										
Measured Depth (ft)	Inclination (°)	Azimuth (°)	Vertical Depth (ft)	+N/-S (ft)	+E/-W (ft)	Vertical Section (ft)	Dogleg Rate (°/100usft)	Build Rate (°/100usft)	Turn Rate (°/100usft)	
8,650.00	92.22	0.95	7,258.78	2,009.23	779.50	2,008.69	2.24	2.17	-0.53	
8,744.00	92.90	0.38	7,254.58	2,103.13	780.59	2,102.59	0.94	0.72	-0.61	
8,838.00	91.48	358.29	7,250.99	2,197.05	779.50	2,196.50	2.69	-1.51	-2.22	
8,933.00	91.74	358.86	7,248.32	2,291.98	777.14	2,291.44	0.66	0.27	0.60	
9,028.00	89.93	357.84	7,246.93	2,386.93	774.41	2,386.39	2.19	-1.91	-1.07	
9,121.00	89.73	357.75	7,247.21	2,479.86	770.83	2,479.32	0.24	-0.22	-0.10	
9,216.00	89.87	357.58	7,247.54	2,574.78	766.96	2,574.24	0.23	0.15	-0.18	
9,310.00	89.46	357.38	7,248.09	2,668.69	762.82	2,668.15	0.49	-0.44	-0.21	
9,404.00	89.49	359.33	7,248.95	2,762.64	760.13	2,762.11	2.07	0.03	2.07	
9,499.00	90.40	358.81	7,249.04	2,857.62	758.58	2,857.09	1.10	0.96	-0.55	
9,593.00	90.24	358.15	7,248.52	2,951.59	756.09	2,951.06	0.72	-0.17	-0.70	
9,686.00	90.30	358.07	7,248.08	3,044.54	753.02	3,044.01	0.11	0.06	-0.09	
9,780.00	90.20	359.47	7,247.67	3,138.51	751.01	3,137.99	1.49	-0.11	1.49	
9,874.00	90.47	359.25	7,247.12	3,232.51	749.96	3,231.98	0.37	0.29	-0.23	
9,968.00	89.53	359.84	7,247.12	3,326.50	749.21	3,325.98	1.18	-1.00	0.63	
10,061.00	89.09	359.94	7,248.24	3,419.49	749.03	3,418.97	0.49	-0.47	0.11	
10,155.00	88.79	0.52	7,249.98	3,513.48	749.41	3,512.95	0.69	-0.32	0.62	
10,249.00	89.43	0.68	7,251.44	3,607.46	750.39	3,606.94	0.70	0.68	0.17	
10,343.00	89.29	0.29	7,252.49	3,701.45	751.19	3,700.92	0.44	-0.15	-0.41	
10,437.00	90.20	0.61	7,252.91	3,795.45	751.93	3,794.92	1.03	0.97	0.34	
10,531.00	90.77	1.24	7,252.11	3,889.43	753.44	3,888.90	0.90	0.61	0.67	
10,626.00	90.74	359.76	7,250.86	3,984.41	754.27	3,983.89	1.56	-0.03	-1.56	
10,720.00	89.53	359.31	7,250.64	4,078.41	753.51	4,077.88	1.37	-1.29	-0.48	
10,814.00	89.33	359.57	7,251.57	4,172.40	752.59	4,171.87	0.35	-0.21	0.28	
10,907.00	89.60	0.17	7,252.44	4,265.39	752.38	4,264.87	0.71	0.29	0.65	
11,001.00	89.33	0.01	7,253.32	4,359.39	752.53	4,358.86	0.33	-0.29	-0.17	
11,093.00	90.13	0.18	7,253.75	4,451.39	752.68	4,450.86	0.89	0.87	0.18	
11,187.00	89.40	359.78	7,254.14	4,545.39	752.65	4,544.86	0.89	-0.78	-0.43	
11,279.00	90.84	0.91	7,253.94	4,637.38	753.20	4,636.85	1.99	1.57	1.23	
11,372.00	90.70	1.71	7,252.69	4,730.35	755.33	4,729.82	0.87	-0.15	0.86	
11,466.00	91.18	1.08	7,251.15	4,824.31	757.62	4,823.78	0.84	0.51	-0.67	
11,559.00	89.87	0.70	7,250.30	4,917.29	759.06	4,916.76	1.47	-1.41	-0.41	
11,652.00	89.06	0.64	7,251.17	5,010.28	760.15	5,009.75	0.87	-0.87	-0.06	
11,746.00	88.99	0.17	7,252.77	5,104.26	760.81	5,103.73	0.51	-0.07	-0.50	
11,839.00	89.70	0.36	7,253.83	5,197.25	761.24	5,196.72	0.79	0.76	0.20	
11,932.00	90.20	0.27	7,253.91	5,290.25	761.75	5,289.72	0.55	0.54	-0.10	
12,027.00	90.87	0.47	7,253.03	5,385.25	762.37	5,384.71	0.74	0.71	0.21	
12,121.00	90.20	359.70	7,252.15	5,479.24	762.51	5,478.71	1.09	-0.71	-0.82	
12,214.00	91.89	359.85	7,250.45	5,572.22	762.14	5,571.69	1.82	1.82	0.16	
12,307.00	92.66	0.10	7,246.76	5,665.15	762.10	5,664.61	0.87	0.83	0.27	
12,400.00	92.99	0.28	7,242.18	5,758.03	762.41	5,757.50	0.40	0.35	0.19	
12,495.00	91.14	0.02	7,238.75	5,852.97	762.66	5,852.43	1.97	-1.95	-0.27	
12,590.00	92.12	359.69	7,236.05	5,947.93	762.42	5,947.39	1.09	1.03	-0.35	
12,685.00	92.62	359.55	7,232.12	6,042.84	761.79	6,042.31	0.55	0.53	-0.15	

<b>Company:</b>	US ROCKIES REGION PLANNING	<b>Local Co-ordinate Reference:</b>	Well Land 28N-29HZ
<b>Project:</b>	US Rockies Wattenberg Planning	<b>TVD Reference:</b>	GL 4899' & KB 20' @ 4919.00ft (Precision 461)
<b>Site:</b>	Land 18-32HZ Pad 2N-66W-32	<b>MD Reference:</b>	GL 4899' & KB 20' @ 4919.00ft (Precision 461)
<b>Well:</b>	Land 28N-29HZ	<b>North Reference:</b>	True
<b>Wellbore:</b>	OH	<b>Survey Calculation Method:</b>	Minimum Curvature
<b>Design:</b>	OH	<b>Database:</b>	Denver Sales Office

Survey									
Measured Depth (ft)	Inclination (°)	Azimuth (°)	Vertical Depth (ft)	+N/-S (ft)	+E/-W (ft)	Vertical Section (ft)	Dogleg Rate (°/100usft)	Build Rate (°/100usft)	Turn Rate (°/100usft)
12,779.00	93.12	359.73	7,227.42	6,136.72	761.20	6,136.19	0.57	0.53	0.19
12,874.00	93.29	358.89	7,222.10	6,231.57	760.05	6,231.03	0.90	0.18	-0.88
12,895.00	93.23	358.25	7,220.91	6,252.53	759.53	6,251.99	3.06	-0.29	-3.05
<b>Last SDI MWD Survey</b>									
12,948.00	93.23	358.25	7,217.92	6,305.42	757.92	6,304.89	0.00	0.00	0.00
<b>Projection to TD: 1' FNL Sec 29 &amp; 2270' FWL Sec 29</b>									

Design Annotations				
Measured Depth (ft)	Vertical Depth (ft)	Local Coordinates		Comment
		+N/-S (ft)	+E/-W (ft)	
213.00	213.00	0.23	-0.63	First SDI MWD Surface Survey
1,806.00	1,794.42	76.12	132.73	Last SDI MWD Surface Survey
1,956.00	1,941.91	90.83	155.73	First SDI MWD Production Survey
4,594.71	4,511.73	362.11	684.86	Enter land Box : 4594.71' MD & 4511.73' TVD
7,710.00	7,255.38	1,069.49	768.52	Landing Point:30' FSL Sec 29 & 2268' FWL Sec 29
12,895.00	7,220.91	6,252.53	759.53	Last SDI MWD Survey
12,948.00	7,217.92	6,305.42	757.92	Projection to TD: 1' FNL Sec 29 & 2270' FWL Sec 29

Checked By: \_\_\_\_\_ Approved By: \_\_\_\_\_ Date: \_\_\_\_\_