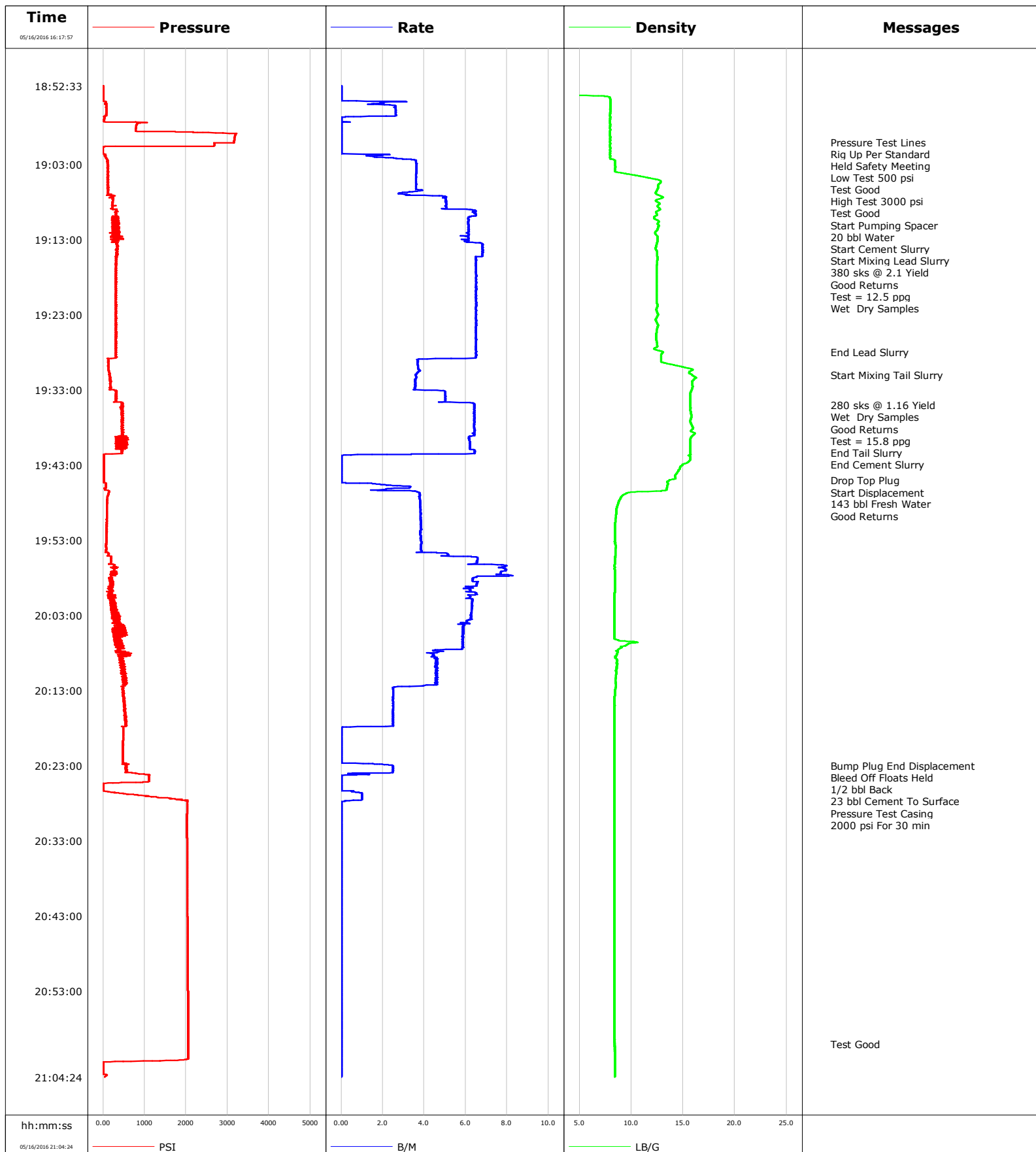


**Well** Land Fed 29N-29HZ  
**Field** Wattenberge  
**Engineer** Moreland/Leiker  
**Country**

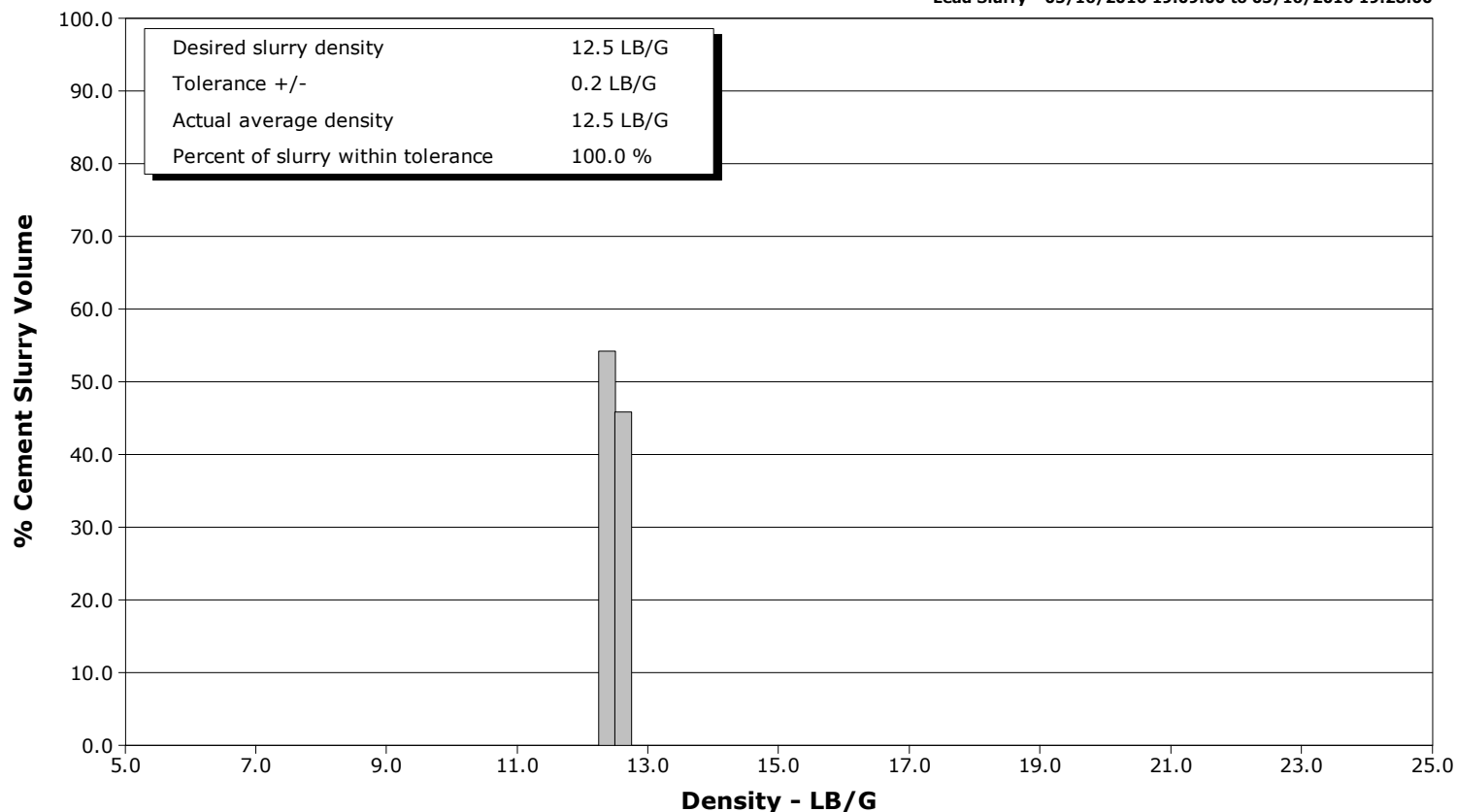
**Client** Anadarko  
**SIR No.** DJT7-00186  
**Job Type** Surface  
**Job Date**



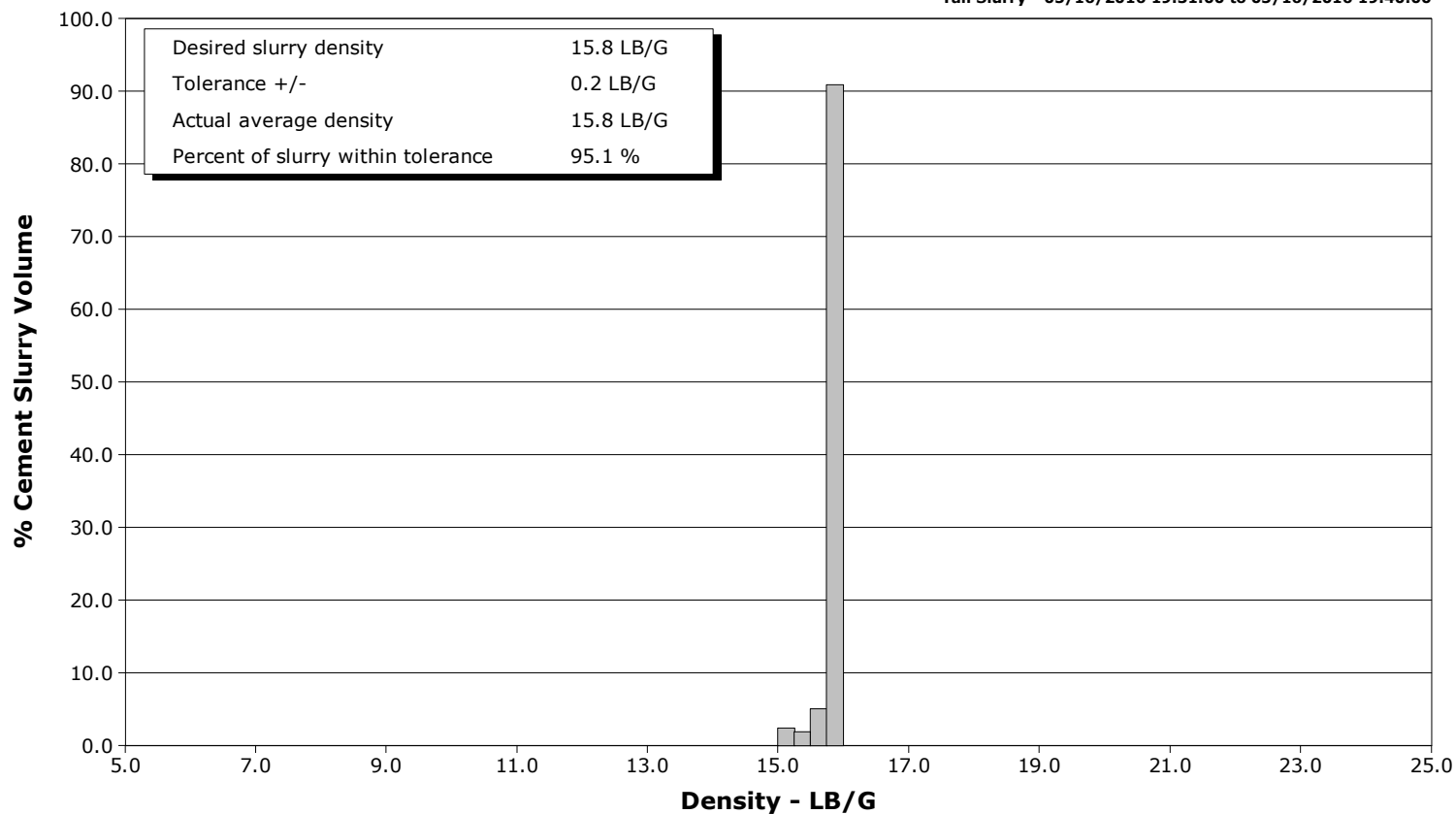
**Well** Land Fed 29N-29HZ  
**Field** Wattenberge  
**Engineer** Moreland/Leiker  
**Country**

**Client** Anadarko  
**SIR No.** DJT7-00186  
**Job Type** Surface  
**Job Date**

**Lead Slurry - 05/16/2016 19:09:00 to 05/16/2016 19:28:00**



**Tail Slurry - 05/16/2016 19:31:00 to 05/16/2016 19:40:00**



# Cementing Service Report

				Customer Anadarko				Job Number DJT7-00186							
Well Land Fed 29N-29HZ			Location (legal)			Schlumberger Location cwv			Job Start May/16/2016						
Field Wattenberge		Formation Name/Type			Deviation deg		Bit Size 13.5 in		Well MD ft		Well TVD ft				
County Weld		State/Province Colorado			BHP psi		BHST 101 degF		BHCT 81 degF		Pore Press. Gradient lb/gal				
Well Master 0631662904		API/UWI													
Rig Name Precision 461		Drilled For Oil		Service Via Land		Casing/ Liner									
						Depth, ft		Size, in		Weight, lb/ft		Grade	Thread		
Offshore Zone		Well Class New		Well Type Development		1892.0		9.6		36.0		J55	BUTT		
						0.0		0.0		0.0					
Drilling Fluid Type		Max. Density lb/gal		Plastic Viscosity cP		Tubing/Drill Pipe									
						T/D		Depth, ft		Size, in		Weight, lb/ft		Grade	Thread
Service Line Cementing		Job Type Surface													
Max. Allowed Tub. Press psi		Max. Allowed Ann. Press psi		WH Connection Single Cement head		Perforations/Open Hole									
						Top, ft		Bottom, ft		shot/ft		No. of Shots		Total Interval ft	
<b>Service Instructions</b> Rate And Density Checked 20 bbl Water 380 sks @ 2.1 Yield @ 12.5 ppg 280 sks @ 1.16 Yield @ 15.8 ppg Displace 143 bbl Water						ft		ft							
						ft		ft						Diameter in	
						ft		ft							
		Treat Down Casing		Displacement 143.0 bbl		Packer Type		Packer Depth ft							
		Tubing Vol. bbl		Casing Vol. 145.0 bbl		Annular Vol. bbl		Openhole Vol. bbl							
Casing/Tubing Secured <input checked="" type="checkbox"/>		1 Hole Vol. Circulated prior to Cement <input checked="" type="checkbox"/>				Casing Tools				Squeeze Job					
Lift Pressure psi						Shoe Type Float				Squeeze Type					
Pipe Rotated <input type="checkbox"/>		Pipe Reciprocated <input type="checkbox"/>				Shoe Depth 1892.0 ft				Tool Type					
No. Centralizers		Top Plugs 1		Bottom Plugs		Stage Tool Type				Tool Depth ft					
Cement Head Type Single						Stage Tool Depth ft				Tail Pipe Size in					
Job Scheduled For May/16/2016		Arrived on Location May/16/2016		Leave Location May/16/2016		Collar Type Float				Tail Pipe Depth ft					
						Collar Depth 1945.0 ft				Sqz. Total Vol. bbl					
Date	Time 24-hr clock	Treating Pressure PSI	Flow Rate B/M	Density LB/G	Volume BBL	Message									
05/16/2016	16:17:57	3	0.0	5.06	0.0										
05/16/2016	16:19:57	7	0.5	8.39	1.0										
05/16/2016	16:21:57	5	0.0	8.85	1.9										
05/16/2016	16:23:57	55	2.7	8.39	4.7										
05/16/2016	16:25:57	521	7.9	8.40	15.5										
05/16/2016	16:27:57	160	4.0	8.39	20.1										
05/16/2016	16:29:57	9	0.0	8.60	29.1										
05/16/2016	16:31:57	8	0.0	8.39	29.6										
05/16/2016	16:33:57	6	0.0	8.39	29.6										
05/16/2016	16:35:57	6	0.0	8.39	29.6										
05/16/2016	16:37:57	8	0.0	8.39	30.5										
05/16/2016	16:39:57	7	0.0	8.39	31.4										
05/16/2016	16:41:57	6	0.0	8.39	0.0										
05/16/2016	16:43:57	6	0.0	8.39	0.0										
05/16/2016	16:45:57	6	0.0	8.39	0.0										
05/16/2016	16:47:57	6	0.0	8.39	0.0										
05/16/2016	16:49:57	7	0.0	8.39	0.0										
05/16/2016	16:51:57	6	0.0	8.39	0.0										
05/16/2016	16:53:57	7	0.0	8.39	0.0										
05/16/2016	16:55:57	6	0.0	8.39	0.0										
05/16/2016	16:57:57	6	0.0	8.39	0.0										

Well			Field	Job Start		Customer	Job Number	
Land Fed 29N-29HZ			Wattenberge		May/16/2016		Anadarko	DJT7-00186
Date	Time 24-hr clock	Treating Pressure PSI	Flow Rate B/M	Density LB/G	Volume BBL	Message		
05/16/2016	17:01:57	6	0.0	8.39	0.0			
05/16/2016	17:03:57	6	0.0	8.39	0.0			
05/16/2016	17:05:57	6	0.0	8.39	0.0			
05/16/2016	17:07:57	5	0.0	8.39	0.0			
05/16/2016	17:09:57	6	0.0	8.39	0.0			
05/16/2016	17:11:57	6	0.0	8.39	0.0			
05/16/2016	17:13:57	6	0.0	8.39	0.0			
05/16/2016	17:15:57	6	0.0	8.39	0.0			
05/16/2016	17:17:57	6	0.0	8.39	0.0			
05/16/2016	17:19:57	6	0.0	8.39	0.0			
05/16/2016	17:21:57	6	0.0	8.39	0.0			
05/16/2016	17:23:57	7	0.0	8.39	0.0			
05/16/2016	17:25:57	7	0.0	8.39	0.0			
05/16/2016	17:27:57	6	0.0	8.39	0.0			
05/16/2016	17:29:57	6	0.0	8.39	0.0			
05/16/2016	17:31:57	6	0.0	8.39	0.0			
05/16/2016	17:33:57	6	0.0	8.39	0.0			
05/16/2016	17:35:57	6	0.0	8.39	0.0			
05/16/2016	17:37:57	6	0.0	8.39	0.0			
05/16/2016	17:39:57	6	0.0	8.39	0.0			
05/16/2016	17:41:57	6	0.0	8.39	0.0			
05/16/2016	17:43:57	6	0.0	8.39	0.0			
05/16/2016	17:45:57	6	0.0	8.39	0.0			
05/16/2016	17:47:57	6	0.0	8.39	0.0			
05/16/2016	17:49:57	7	0.0	8.39	0.0			
05/16/2016	17:51:57	6	0.0	8.39	0.0			
05/16/2016	17:53:57	7	0.0	8.39	0.0			
05/16/2016	17:55:57	7	0.0	8.39	0.0			
05/16/2016	17:57:57	7	0.0	8.39	0.0			
05/16/2016	17:59:57	7	0.0	8.39	0.0			
05/16/2016	18:01:57	7	0.0	8.39	0.0			
05/16/2016	18:03:57	7	0.0	8.39	0.0			
05/16/2016	18:05:57	7	0.0	8.39	0.0			
05/16/2016	18:07:57	7	0.0	8.39	0.0			
05/16/2016	18:09:57	7	0.0	8.39	0.0			
05/16/2016	18:11:57	7	0.0	8.39	0.0			
05/16/2016	18:13:57	7	0.0	8.39	0.0			
05/16/2016	18:15:57	7	0.0	8.39	0.0			
05/16/2016	18:17:57	7	0.0	8.39	0.0			
05/16/2016	18:19:57	7	0.0	8.39	0.0			
05/16/2016	18:21:57	7	0.0	8.39	0.0			
05/16/2016	18:23:57	7	0.0	8.39	0.0			
05/16/2016	18:25:57	7	0.0	8.39	0.0			
05/16/2016	18:27:57	7	0.0	8.40	0.0			
05/16/2016	18:29:57	8	0.0	8.39	0.0			
05/16/2016	18:31:57	7	0.0	8.39	0.0			
05/16/2016	18:33:57	7	0.0	8.40	0.0			
05/16/2016	18:35:57	7	0.0	8.40	0.0			
05/16/2016	18:37:57	7	0.0	8.39	0.0			
05/16/2016	18:39:57	7	0.0	8.40	0.0			
05/16/2016	18:41:57	7	0.0	8.39	0.0			
05/16/2016	18:43:57	7	0.0	8.40	0.0			
05/16/2016	18:45:57	7	0.0	8.40	0.0			
05/16/2016	18:47:57	7	0.0	8.40	0.0			

Well			Field	Job Start		Customer		Job Number	
Land Fed 29N-29HZ			Wattenberge		May/16/2016		Anadarko		DJT7-00186
Date	Time 24-hr clock	Treating Pressure PSI	Flow Rate B/M	Density LB/G	Volume BBL	Message			
05/16/2016	18:51:57	8	0.0	8.40	0.0				
05/16/2016	18:53:57	4	0.0	8.40	0.0				
05/16/2016	18:55:57	76	2.6	8.39	3.2				
05/16/2016	18:57:57	795	0.0	8.39	5.1				
05/16/2016	18:59:57	3156	0.0	8.39	5.1				
05/16/2016	19:00:00	3155	0.0	8.39	5.1	Pressure Test Lines			
05/16/2016	19:01:57	54	1.5	8.39	5.6				
05/16/2016	19:03:57	121	3.6	8.39	12.3				
05/16/2016	19:04:00	102	3.6	8.39	12.5	Start Pumping Spacer			
05/16/2016	19:05:57	128	3.6	8.39	19.5				
05/16/2016	19:07:57	232	5.0	12.48	27.6				
05/16/2016	19:08:00	227	5.1	12.49	27.8	Start Cement Slurry			
05/16/2016	19:09:00	302	6.2	12.60	32.9	Start Mixing Lead Slurry			
05/16/2016	19:09:57	287	6.2	12.53	39.0				
05/16/2016	19:11:57	302	6.1	12.55	51.3				
05/16/2016	19:13:57	324	6.8	12.51	63.8				
05/16/2016	19:15:00	353	6.8	12.50	71.0	380 sks @ 2.1 Yield			
05/16/2016	19:15:57	321	6.5	12.52	77.2				
05/16/2016	19:17:57	301	6.5	12.49	90.2				
05/16/2016	19:19:57	307	6.5	12.49	103.2				
05/16/2016	19:21:57	322	6.5	12.50	116.2				
05/16/2016	19:23:57	311	6.5	12.49	129.2				
05/16/2016	19:25:57	303	6.5	12.49	142.2				
05/16/2016	19:27:57	314	6.5	12.53	155.2				
05/16/2016	19:28:00	311	6.5	12.55	155.6	End Lead Slurry			
05/16/2016	19:29:57	123	3.7	12.53	165.2				
05/16/2016	19:31:00	155	3.6	15.01	169.1	Start Mixing Tail Slurry			
05/16/2016	19:31:57	175	3.6	15.75	172.5				
05/16/2016	19:33:57	317	5.0	15.80	180.9				
05/16/2016	19:35:00	474	6.4	15.78	186.6	280 sks @ 1.16 Yield			
05/16/2016	19:35:57	455	6.4	15.77	192.7				
05/16/2016	19:37:57	445	6.4	15.80	205.5				
05/16/2016	19:39:57	592	6.2	15.82	218.1				
05/16/2016	19:40:00	514	6.2	15.83	218.4	End Tail Slurry			
05/16/2016	19:41:00	453	6.4	15.81	224.7	End Cement Slurry			
05/16/2016	19:41:57	18	0.0	15.83	228.4				
05/16/2016	19:43:57	14	0.0	15.82	228.4				
05/16/2016	19:45:00	18	0.0	11.35	228.4	Drop Top Plug			
05/16/2016	19:45:57	65	3.3	9.62	229.7				
05/16/2016	19:46:00	64	3.3	9.61	229.9	Start Displacement			
05/16/2016	19:47:00	118	3.8	9.18	233.0	143 bbl Fresh Water			
05/16/2016	19:47:57	96	3.8	8.97	236.6				
05/16/2016	19:48:00	98	3.8	8.95	236.8	Good Returns			
05/16/2016	19:49:57	86	3.8	8.61	244.2				
05/16/2016	19:51:57	84	3.8	8.65	251.9				
05/16/2016	19:53:57	74	3.8	8.51	259.6				
05/16/2016	19:55:57	185	6.5	8.39	269.9				
05/16/2016	19:57:57	231	6.4	8.39	285.1				
05/16/2016	19:59:57	156	6.5	8.39	297.8				
05/16/2016	20:01:57	312	6.3	8.39	310.4				
05/16/2016	20:03:57	354	6.0	8.39	322.9				
05/16/2016	20:05:57	306	5.9	8.39	334.7				
05/16/2016	20:07:57	545	4.6	8.39	345.9				
05/16/2016	20:09:57	408	4.5	8.39	355.0				

Well			Field	Job Start	Customer	Job Number
Land Fed 29N-29HZ			Wattenberge	May/16/2016	Anadarko	DJT7-00186
Date	Time 24-hr clock	Treating Pressure PSI	Flow Rate B/M	Density LB/G	Volume BBL	Message
05/16/2016	20:13:57	482	2.5	8.39	370.1	
05/16/2016	20:15:57	523	2.5	8.40	375.1	
05/16/2016	20:17:57	486	0.0	8.40	379.8	
05/16/2016	20:19:57	478	0.0	8.40	379.8	
05/16/2016	20:21:57	477	0.0	8.41	379.8	
05/16/2016	20:23:00	549	2.5	8.41	380.4	Bump Plug End Displacement
05/16/2016	20:23:57	695	2.3	8.40	382.8	
05/16/2016	20:24:00	785	0.5	8.40	382.9	Bleed Off Floats Held
05/16/2016	20:25:00	1103	0.0	8.40	383.1	1/2 bbl Back
05/16/2016	20:25:57	10	0.0	8.41	383.1	
05/16/2016	20:26:00	11	0.0	8.41	383.1	23 bbl Cement To Surface
05/16/2016	20:27:00	1033	1.0	8.41	383.6	Pressure Test Casing
05/16/2016	20:27:57	2033	0.0	8.40	384.3	
05/16/2016	20:28:00	2032	0.0	8.40	384.3	2000 psi For 30 min
05/16/2016	20:29:57	2020	0.0	8.41	384.3	
05/16/2016	20:31:57	2021	0.0	8.41	384.3	
05/16/2016	20:33:57	2023	0.0	8.41	384.3	
05/16/2016	20:35:57	2026	0.0	8.41	384.3	
05/16/2016	20:37:57	2028	0.0	8.41	384.3	
05/16/2016	20:39:57	2030	0.0	8.41	384.3	
05/16/2016	20:41:57	2033	0.0	8.41	384.3	
05/16/2016	20:43:57	2035	0.0	8.40	384.3	
05/16/2016	20:45:57	2038	0.0	8.40	384.3	
05/16/2016	20:47:57	2039	0.0	8.40	384.3	
05/16/2016	20:49:57	2042	0.0	8.40	384.3	
05/16/2016	20:51:57	2044	0.0	8.40	384.3	
05/16/2016	20:53:57	2047	0.0	8.40	384.3	
05/16/2016	20:55:57	2049	0.0	8.40	384.3	
05/16/2016	20:57:57	2052	0.0	8.40	384.3	
05/16/2016	20:59:57	2054	0.0	8.40	384.3	
05/16/2016	21:00:00	2054	0.0	8.40	384.3	Test Good
05/16/2016	21:01:57	2056	0.0	8.40	384.3	

### Post Job Summary

Average Pump Rates, bbl/min					Volume of Fluid Injected, bbl					
Slurry	N2	Mud	Maximum Rate		Total Slurry	Mud	Spacer	N2		
Treating Pressure Summary, psi					Breakdown Fluid					
Maximum	Final	Average	Bump Plug to	Breakdown	Type	Volume	Density			
	0					bbl	lb/gal			
Avg. N2 Percent		Designed Slurry Volume		Displacement	Mix Water Temp	Cement Circulated to Surface?		Volume		
%		0.0 bbl		bbl	60 degF	<input checked="" type="checkbox"/>		bbl		
						Washed Thru Perfs		To		
						<input type="checkbox"/>		ft		
Customer or Authorized Representative			Schlumberger Supervisor			Circulation Lost		Job Completed		
			Moreland/Leiker			<input type="checkbox"/>		<input checked="" type="checkbox"/>		
						-		-		