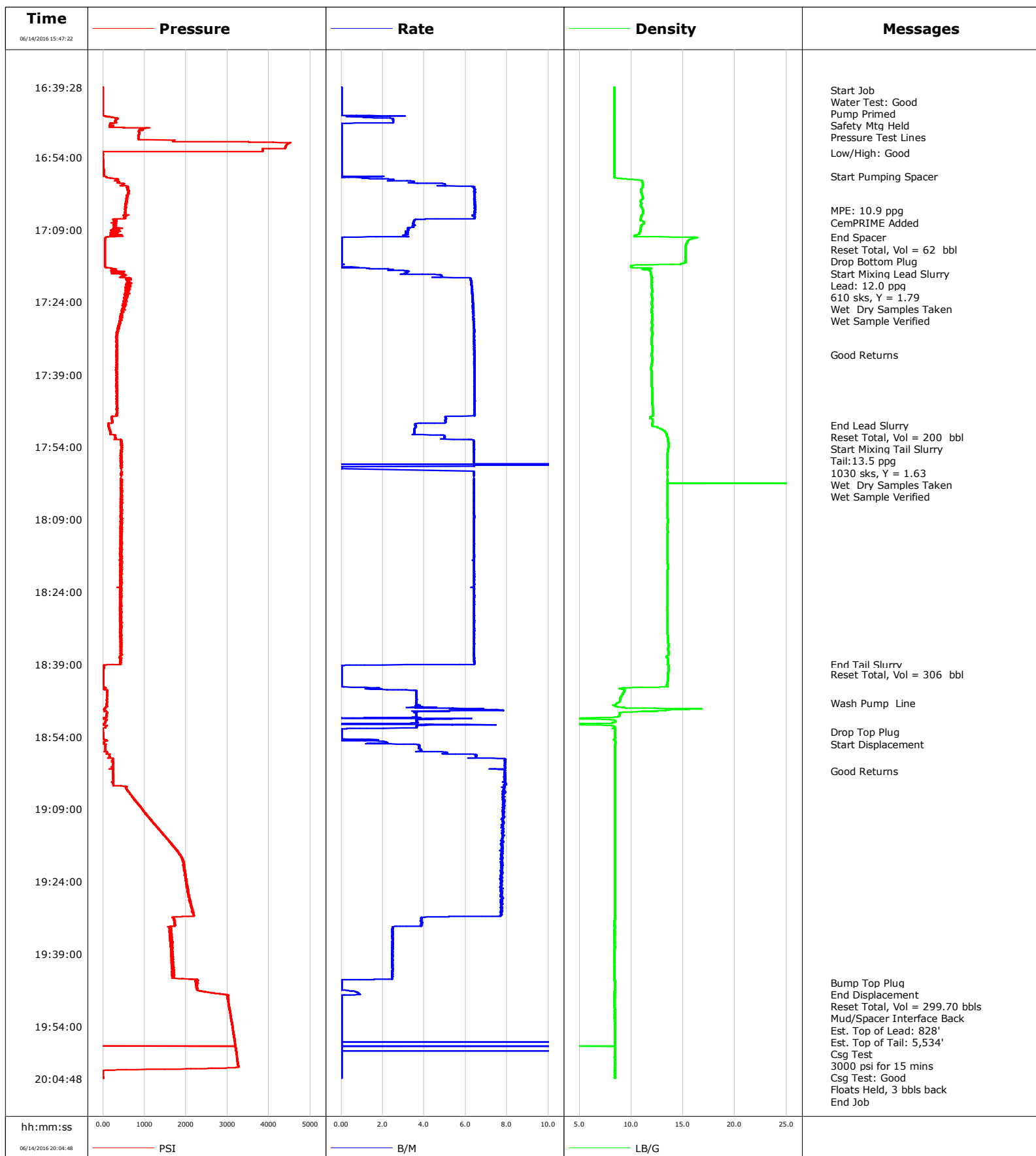


Well Land Fed 29N-29HZ
Field Wattenberg
Engineer Matlock/Leiker
Country United States

Client Anadarko
SIR No. DMBW-00127
Job Type Production
Job Date 06-14-2016



Cementing Service Report

				Customer Anadarko				Job Number DMBW-00127				
Well Land Fed 29N-29HZ			Location (legal)			Schlumberger Location Cheyenne			Job Start Jun/14/2016			
Field Wattenberg		Formation Name/Type			Deviation deg		Bit Size 8.5 in		Well MD 12985.0 ft		Well TVD 7278.0 ft	
County Weld		State/Province CO			BHP psi		BHST 227 degF		BHCT 225 degF		Pore Press. Gradient lb/gal	
Well Master 631662904		API/UWI 5123423930000										
Rig Name Precision 461		Drilled For Gas		Service Via Land		Casing/ Liner						
						Depth, ft		Size, in		Weight, lb/ft		Grade
						12985.0		5.5		17.0		P-110
Offshore Zone		Well Class New		Well Type Development		0.0		0.0		0.0		
Drilling Fluid Type		Max. Density lb/gal		Plastic Viscosity cP		Tubing/Drill Pipe						
						T/D		Depth, ft		Size, in		Weight, lb/ft
Service Line Cementing		Job Type Production										
Max. Allowed Tub. Press psi		Max. Allowed Ann. Press psi		WH Connection Double Cement head		Perforations/Open Hole						
						Top, ft		Bottom, ft		shot/ft		No. of Shots
						ft		ft				Total Interval ft
						ft		ft				Diameter in
						ft		ft				
						Treat Down Casing		Displacement 299.7 bbl		Packer Type		Packer Depth ft
						Tubing Vol. bbl		Casing Vol. bbl		Annular Vol. bbl		Openhole Vol. bbl
Casing/Tubing Secured <input checked="" type="checkbox"/>		1 Hole Vol. Circulated prior to Cement <input checked="" type="checkbox"/>				Casing Tools				Squeeze Job		
Lift Pressure psi						Shoe Type Float				Squeeze Type		
Pipe Rotated <input type="checkbox"/>		Pipe Reciprocated <input type="checkbox"/>				Shoe Depth 12985.0 ft				Tool Type		
No. Centralizers		Top Plugs 1		Bottom Plugs 1		Stage Tool Type				Tool Depth ft		
Cement Head Type Double						Stage Tool Depth ft				Tail Pipe Size in		
Job Scheduled For Jun/14/2016 12:00		Arrived on Location Jun/14/2016 12:00		Leave Location Jun/14/2016 21:00		Collar Type Float				Tail Pipe Depth ft		
						Collar Depth 12891.0 ft				Sqz. Total Vol. bbl		
Date	Time 24-hr clock	Treating Pressure PSI	Flow Rate B/M	Density LB/G	Volume BBL	Message						
06/14/2016	16:40:00	-11	0.0	8.38	0.0	Start Job						
06/14/2016	16:40:30	-11	0.0	8.38	0.0							
06/14/2016	16:41:00	-11	0.0	8.38	0.0	Water Test: Good						
06/14/2016	16:41:30	-11	0.0	8.38	0.0							
06/14/2016	16:42:00	-11	0.0	8.38	0.0	Pump Primed						
06/14/2016	16:42:30	-11	0.0	8.38	0.0	Safety Mtg Held						
06/14/2016	16:43:00	-11	0.0	8.38	0.0							
06/14/2016	16:43:30	-11	0.0	8.38	0.0							
06/14/2016	16:44:00	-11	0.0	8.38	0.0							
06/14/2016	16:44:30	-6	0.0	8.38	0.0							
06/14/2016	16:45:00	-11	0.0	8.38	0.0							
06/14/2016	16:45:30	58	2.4	8.36	0.3							
06/14/2016	16:46:00	360	2.5	8.38	1.0							
06/14/2016	16:46:30	286	2.5	8.39	2.3							
06/14/2016	16:47:00	184	0.1	8.39	3.3							
06/14/2016	16:47:30	165	0.0	8.39	3.3							
06/14/2016	16:48:00	1011	0.0	8.39	3.3	Pressure Test Lines						
06/14/2016	16:48:30	866	0.0	8.39	3.3							
06/14/2016	16:49:00	864	0.0	8.39	3.3							
06/14/2016	16:49:30	860	0.0	8.39	3.3							
06/14/2016	16:50:00	859	0.0	8.39	3.3							

Well			Field	Job Start		Customer		Job Number	
Land Fed 29N-29HZ			Wattenberg		Jun/14/2016		Anadarko		DMBW-00127
Date	Time 24-hr clock	Treating Pressure PSI	Flow Rate B/M	Density LB/G	Volume BBL	Message			
06/14/2016	16:51:00	4510	0.0	8.39	3.3				
06/14/2016	16:51:30	4416	0.0	8.39	3.3				
06/14/2016	16:52:00	4391	0.0	8.39	3.3				
06/14/2016	16:52:30	3848	0.0	8.39	3.3				
06/14/2016	16:53:00	-17	0.0	8.39	3.3	Low/High: Good			
06/14/2016	16:53:30	-1	0.0	8.39	3.3				
06/14/2016	16:54:00	-3	0.0	8.39	3.3				
06/14/2016	16:54:30	0	0.0	8.39	3.3				
06/14/2016	16:55:00	7	0.0	8.39	3.3				
06/14/2016	16:55:30	9	0.0	8.39	3.3				
06/14/2016	16:56:00	11	0.0	8.39	3.3				
06/14/2016	16:56:30	12	0.0	8.39	3.3				
06/14/2016	16:57:00	15	0.0	8.39	3.3				
06/14/2016	16:57:30	16	0.0	8.39	3.3				
06/14/2016	16:58:00	63	2.0	8.39	3.4	Start Pumping Spacer			
06/14/2016	16:58:30	352	2.3	9.47	3.9				
06/14/2016	16:59:00	389	3.5	11.05	5.3				
06/14/2016	16:59:30	508	5.0	11.12	7.2				
06/14/2016	17:00:00	590	6.2	11.11	9.7				
06/14/2016	17:00:30	605	6.4	11.01	12.9				
06/14/2016	17:01:00	615	6.4	10.96	16.1				
06/14/2016	17:01:30	609	6.4	10.99	19.3				
06/14/2016	17:02:00	582	6.4	11.07	22.5				
06/14/2016	17:02:30	562	6.4	11.12	25.7				
06/14/2016	17:03:00	561	6.4	10.93	29.0				
06/14/2016	17:03:30	545	6.4	10.97	32.2				
06/14/2016	17:04:00	528	6.4	10.92	35.4				
06/14/2016	17:04:30	546	6.4	11.04	38.6				
06/14/2016	17:05:00	550	6.4	11.13	41.9	MPE: 10.9 ppg			
06/14/2016	17:05:30	524	6.4	11.15	45.1				
06/14/2016	17:06:00	564	6.3	11.00	48.3	CemPRIME Added			
06/14/2016	17:06:30	510	6.4	10.94	51.5				
06/14/2016	17:07:00	245	3.5	10.89	54.1				
06/14/2016	17:07:30	284	3.5	11.19	55.9				
06/14/2016	17:08:00	264	3.5	11.01	57.6				
06/14/2016	17:08:30	315	3.5	10.92	59.4				
06/14/2016	17:09:00	240	3.3	10.89	61.0				
06/14/2016	17:09:30	212	3.2	10.83	62.6				
06/14/2016	17:10:00	181	3.2	10.67	64.2				
06/14/2016	17:10:30	128	1.4	12.72	65.7				
06/14/2016	17:10:34	72	0.2	16.16	65.7	End Spacer			
06/14/2016	17:10:35	66	0.2	16.16	65.7	Reset Total, Vol = 62 bbl			
06/14/2016	17:11:00	45	0.0	15.69	65.7				
06/14/2016	17:11:30	41	0.0	15.40	65.7				
06/14/2016	17:12:00	40	0.0	15.30	65.7				
06/14/2016	17:12:30	40	0.0	15.25	65.7				
06/14/2016	17:13:00	39	0.0	15.22	65.7	Drop Bottom Plug			
06/14/2016	17:13:30	39	0.0	15.22	65.7				
06/14/2016	17:14:00	39	0.0	15.23	65.7				
06/14/2016	17:14:30	44	0.0	15.23	65.7				
06/14/2016	17:15:00	44	0.0	15.24	65.7				
06/14/2016	17:15:30	43	0.0	15.19	65.7				
06/14/2016	17:16:00	44	0.0	14.95	65.7				
06/14/2016	17:16:30	44	0.0	10.01	65.7				

Well			Field	Job Start		Customer	Job Number
Land Fed 29N-29HZ			Wattenberg	Jun/14/2016		Anadarko	DMBW-00127
Date	Time 24-hr clock	Treating Pressure PSI	Flow Rate B/M	Density LB/G	Volume BBL	Message	
06/14/2016	17:17:30	200	3.1	11.80	67.0		
06/14/2016	17:18:00	352	3.1	11.87	68.5	Start Mixing Lead Slurry	
06/14/2016	17:18:30	482	4.8	11.93	70.5		
06/14/2016	17:19:00	653	6.2	11.99	73.0	Lead: 12.0 ppg	
06/14/2016	17:19:30	632	6.2	11.95	76.1		
06/14/2016	17:20:00	583	6.3	11.98	79.3	610 sks, Y = 1.79	
06/14/2016	17:20:30	561	6.3	11.96	82.4		
06/14/2016	17:21:00	610	6.3	11.96	85.5	Wet Dry Samples Taken	
06/14/2016	17:21:03	631	6.3	11.97	85.9	Wet Sample Verified	
06/14/2016	17:21:30	596	6.3	12.01	1.8		
06/14/2016	17:22:00	556	6.3	11.99	4.9		
06/14/2016	17:22:30	551	6.3	11.97	8.1		
06/14/2016	17:23:00	590	6.3	12.00	11.3		
06/14/2016	17:23:30	524	6.3	12.01	14.4		
06/14/2016	17:24:00	529	6.3	11.97	17.6		
06/14/2016	17:24:30	551	6.3	11.97	20.8		
06/14/2016	17:25:00	515	6.4	12.03	24.0		
06/14/2016	17:25:30	469	6.4	11.96	27.1		
06/14/2016	17:26:00	463	6.4	11.98	30.3		
06/14/2016	17:26:30	445	6.4	12.00	33.5		
06/14/2016	17:27:00	433	6.4	11.99	36.7		
06/14/2016	17:27:30	424	6.4	12.00	39.9		
06/14/2016	17:28:00	409	6.4	11.98	43.0		
06/14/2016	17:28:30	389	6.4	12.01	46.2		
06/14/2016	17:29:00	373	6.4	12.02	49.4		
06/14/2016	17:29:30	385	6.4	11.96	52.6		
06/14/2016	17:30:00	360	6.4	11.98	55.8		
06/14/2016	17:30:30	343	6.4	12.04	59.0		
06/14/2016	17:31:00	335	6.4	12.01	62.2		
06/14/2016	17:31:30	323	6.4	11.97	65.4		
06/14/2016	17:32:00	322	6.4	11.96	68.6		
06/14/2016	17:32:30	337	6.4	11.96	71.8		
06/14/2016	17:33:00	338	6.4	11.99	75.1		
06/14/2016	17:33:30	333	6.4	12.00	78.3		
06/14/2016	17:34:00	324	6.4	12.00	81.5		
06/14/2016	17:34:30	337	6.4	11.99	84.7		
06/14/2016	17:35:00	331	6.4	11.98	87.9	Good Returns	
06/14/2016	17:35:30	326	6.4	11.99	91.1		
06/14/2016	17:36:00	318	6.4	12.00	94.3		
06/14/2016	17:36:30	320	6.4	11.99	97.5		
06/14/2016	17:37:00	331	6.4	11.97	100.7		
06/14/2016	17:37:30	310	6.4	11.93	103.9		
06/14/2016	17:38:00	310	6.4	11.93	107.1		
06/14/2016	17:38:30	330	6.4	11.95	110.4		
06/14/2016	17:39:00	334	6.4	11.98	113.6		
06/14/2016	17:39:30	329	6.4	11.98	116.8		
06/14/2016	17:40:00	330	6.4	11.97	120.0		
06/14/2016	17:40:30	332	6.4	11.96	123.2		
06/14/2016	17:41:00	324	6.4	11.97	126.4		
06/14/2016	17:41:30	328	6.4	11.98	129.6		
06/14/2016	17:42:00	318	6.4	12.02	132.9		
06/14/2016	17:42:30	334	6.4	12.02	136.1		
06/14/2016	17:43:00	342	6.4	12.02	139.3		
06/14/2016	17:43:30	331	6.4	12.01	142.5		

Well			Field	Job Start		Customer	Job Number
Land Fed 29N-29HZ			Wattenberg	Jun/14/2016		Anadarko	DMBW-00127
Date	Time 24-hr clock	Treating Pressure PSI	Flow Rate B/M	Density LB/G	Volume BBL	Message	
06/14/2016	17:44:30	333	6.4	12.01	148.9		
06/14/2016	17:45:00	324	6.4	12.02	152.1		
06/14/2016	17:45:30	332	6.4	12.04	155.3		
06/14/2016	17:46:00	343	6.4	12.07	158.6		
06/14/2016	17:46:30	341	6.4	12.08	161.8		
06/14/2016	17:47:00	342	6.4	12.09	165.0		
06/14/2016	17:47:30	331	6.4	12.08	168.2		
06/14/2016	17:48:00	207	5.0	11.81	170.9		
06/14/2016	17:48:30	217	5.0	12.05	173.4		
06/14/2016	17:49:00	224	5.0	12.03	175.9		
06/14/2016	17:49:30	130	3.6	12.03	177.8	End Lead Slurry	
06/14/2016	17:49:58	140	3.6	12.53	179.5	Reset Total, Vol = 200 bbl	
06/14/2016	17:50:00	145	3.6	12.56	179.6		
06/14/2016	17:50:30	157	3.5	13.05	181.4		
06/14/2016	17:51:00	175	3.5	13.30	183.2		
06/14/2016	17:51:03	185	3.5	13.32	183.3	Start Mixing Tail Slurry	
06/14/2016	17:51:10	175	3.5	13.35	183.8	Tail:13.5 ppg	
06/14/2016	17:51:11	189	3.5	13.36	183.8	1030 sks, Y = 1.63	
06/14/2016	17:51:12	180	3.5	13.36	183.9	Wet Dry Samples Taken	
06/14/2016	17:51:14	173	3.5	13.38	184.0	Wet Sample Verified	
06/14/2016	17:51:30	255	4.3	13.41	185.0		
06/14/2016	17:52:00	292	5.0	13.48	187.4		
06/14/2016	17:52:30	424	6.3	13.53	190.0		
06/14/2016	17:53:00	449	6.4	13.56	193.2		
06/14/2016	17:53:30	421	6.4	13.58	196.4		
06/14/2016	17:54:00	450	6.4	13.58	199.6		
06/14/2016	17:54:30	442	6.4	13.55	202.7		
06/14/2016	17:55:00	433	6.4	13.52	205.9		
06/14/2016	17:55:30	427	6.4	13.49	209.1		
06/14/2016	17:56:00	439	6.4	13.50	212.3		
06/14/2016	17:56:30	418	6.4	13.50	215.5		
06/14/2016	17:57:00	440	6.4	13.50	218.7		
06/14/2016	17:57:30	444	6.4	13.49	221.9		
06/14/2016	17:58:00	429	6.4	13.49	36648408.0		
06/14/2016	17:58:30	442	0.0	13.49	36648408.0		
06/14/2016	17:59:30	419	6.4	13.50	36648412.0		
06/14/2016	18:00:00	435	6.4	13.50	36648412.0		
06/14/2016	18:01:00	427	6.4	13.50	36648416.0		
06/14/2016	18:01:30	465	6.4	13.48	36648416.0		
06/14/2016	18:02:00	446	6.4	13.48	36648416.0		
06/14/2016	18:02:30	435	6.4	13.49	36648416.0		
06/14/2016	18:03:00	455	6.4	13.50	36648416.0		
06/14/2016	18:03:30	431	6.4	13.51	36648416.0		
06/14/2016	18:04:00	441	6.4	13.51	36648416.0		
06/14/2016	18:04:30	448	6.4	13.50	36648416.0		
06/14/2016	18:05:00	439	6.4	13.49	36648416.0		
06/14/2016	18:05:30	435	6.4	13.48	36648416.0		
06/14/2016	18:06:00	444	6.4	13.47	36648416.0		
06/14/2016	18:06:30	429	6.4	13.48	36648416.0		
06/14/2016	18:07:00	438	6.4	13.50	36648416.0		
06/14/2016	18:07:30	424	6.4	13.49	36648416.0		
06/14/2016	18:08:00	433	6.4	13.48	36648416.0		
06/14/2016	18:08:30	441	6.4	13.49	36648416.0		
06/14/2016	18:09:00	447	6.4	13.52	36648416.0		

Well			Field		Job Start		Customer		Job Number	
Land Fed 29N-29HZ			Wattenberg		Jun/14/2016		Anadarko		DMBW-00127	
Date	Time 24-hr clock	Treating Pressure PSI	Flow Rate B/M	Density LB/G	Volume BBL	Message				
06/14/2016	18:10:00	466	6.4	13.51	36648416.0					
06/14/2016	18:10:30	430	6.4	13.50	36648416.0					
06/14/2016	18:11:00	424	6.4	13.51	36648416.0					
06/14/2016	18:11:30	466	6.4	13.52	36648416.0					
06/14/2016	18:12:00	425	6.4	13.51	36648416.0					
06/14/2016	18:12:30	433	6.4	13.49	36648416.0					
06/14/2016	18:13:00	456	6.4	13.48	36648416.0					
06/14/2016	18:13:30	410	6.4	13.49	36648416.0					
06/14/2016	18:14:00	437	6.4	13.51	36648416.0					
06/14/2016	18:14:30	422	6.4	13.50	36648416.0					
06/14/2016	18:15:00	417	6.4	13.50	36648416.0					
06/14/2016	18:15:30	428	6.4	13.51	36648416.0					
06/14/2016	18:16:00	450	6.4	13.49	36648416.0					
06/14/2016	18:16:30	412	6.4	13.49	36648416.0					
06/14/2016	18:17:00	439	6.4	13.50	36648416.0					
06/14/2016	18:17:30	439	6.4	13.51	36648416.0					
06/14/2016	18:18:00	424	6.4	13.51	36648416.0					
06/14/2016	18:18:30	447	6.4	13.52	36648416.0					
06/14/2016	18:19:00	431	6.4	13.52	36648416.0					
06/14/2016	18:19:30	423	6.4	13.51	36648416.0					
06/14/2016	18:20:00	422	6.4	13.50	36648416.0					
06/14/2016	18:20:30	405	6.4	13.49	36648416.0					
06/14/2016	18:21:00	420	6.4	13.50	36648416.0					
06/14/2016	18:21:30	418	6.4	13.50	36648416.0					
06/14/2016	18:22:00	408	6.4	13.50	36648416.0					
06/14/2016	18:22:30	428	6.4	13.49	36648416.0					
06/14/2016	18:23:00	425	6.4	13.49	36648416.0					
06/14/2016	18:23:30	407	6.4	13.48	36648416.0					
06/14/2016	18:24:00	415	6.4	13.48	36648416.0					
06/14/2016	18:24:30	433	6.4	13.47	36648416.0					
06/14/2016	18:25:00	413	6.4	13.47	36648416.0					
06/14/2016	18:25:30	433	6.4	13.47	36648416.0					
06/14/2016	18:26:00	424	6.4	13.49	36648416.0					
06/14/2016	18:26:30	412	6.4	13.49	36648416.0					
06/14/2016	18:27:00	419	6.4	13.47	36648416.0					
06/14/2016	18:27:30	400	6.4	13.46	36648416.0					
06/14/2016	18:28:00	417	6.4	13.48	36648416.0					
06/14/2016	18:28:30	429	6.4	13.49	36648416.0					
06/14/2016	18:29:00	408	6.4	13.49	36648416.0					
06/14/2016	18:29:30	421	6.4	13.47	36648416.0					
06/14/2016	18:30:00	440	6.4	13.47	36648416.0					
06/14/2016	18:30:30	411	6.4	13.49	36648416.0					
06/14/2016	18:31:00	433	6.4	13.51	36648416.0					
06/14/2016	18:31:30	454	6.4	13.51	36648416.0					
06/14/2016	18:32:00	407	6.4	13.49	36648416.0					
06/14/2016	18:32:30	432	6.4	13.50	36648416.0					
06/14/2016	18:33:00	447	6.4	13.52	36648416.0					
06/14/2016	18:33:30	416	6.4	13.53	36648416.0					
06/14/2016	18:34:00	436	6.4	13.55	36648416.0					
06/14/2016	18:34:30	437	6.4	13.56	36648416.0					
06/14/2016	18:35:00	420	6.4	13.57	36648416.0					
06/14/2016	18:35:30	429	6.4	13.57	36648416.0					
06/14/2016	18:36:00	437	6.4	13.56	36648416.0					
06/14/2016	18:36:30	424	6.4	13.57	36648416.0					

Well			Field		Job Start		Customer		Job Number	
Land Fed 29N-29HZ			Wattenberg		Jun/14/2016		Anadarko		DMBW-00127	
Date	Time 24-hr clock	Treating Pressure PSI	Flow Rate B/M	Density LB/G	Volume BBL	Message				
06/14/2016	18:37:30	403	6.4	13.39	36648416.0					
06/14/2016	18:38:00	417	6.4	13.53	36648416.0					
06/14/2016	18:38:30	407	6.4	13.54	36648416.0					
06/14/2016	18:39:00	411	6.4	13.52	36648416.0	End Tail Slurry				
06/14/2016	18:39:30	15	0.0	13.58	36648416.0					
06/14/2016	18:40:00	11	0.0	13.57	36648416.0					
06/14/2016	18:40:30	5	0.0	13.57	36648416.0					
06/14/2016	18:41:00	5	0.0	13.56	36648416.0	Reset Total, Vol = 306 bbl				
06/14/2016	18:41:30	5	0.0	13.56	36648416.0					
06/14/2016	18:42:00	5	0.0	13.56	36648416.0					
06/14/2016	18:42:30	5	0.0	13.53	36648416.0					
06/14/2016	18:43:00	5	0.0	13.51	36648416.0					
06/14/2016	18:43:30	5	0.0	13.48	36648416.0					
06/14/2016	18:44:00	44	1.5	8.94	36648416.0					
06/14/2016	18:44:30	105	3.6	9.34	36648416.0					
06/14/2016	18:45:00	94	3.6	9.22	36648416.0					
06/14/2016	18:45:30	93	3.6	9.07	36648416.0					
06/14/2016	18:46:00	94	3.6	8.95	36648416.0					
06/14/2016	18:46:30	82	3.6	8.91	36648416.0					
06/14/2016	18:47:00	91	3.6	8.70	36648416.0	Wash Pump Line				
06/14/2016	18:47:30	84	3.8	8.21	36648416.0					
06/14/2016	18:48:00	67	3.7	9.18	36648416.0					
06/14/2016	18:48:30	29	7.8	13.49	36648416.0					
06/14/2016	18:49:00	104	3.5	8.98	36648416.0					
06/14/2016	18:49:30	79	3.6	8.85	36648416.0					
06/14/2016	18:50:00	75	3.4	8.35	36648416.0					
06/14/2016	18:50:30	82	3.8	8.00	36648416.0					
06/14/2016	18:51:00	56	3.6	8.46	36648416.0					
06/14/2016	18:51:30	-13	4.1	3.27	36648416.0					
06/14/2016	18:52:00	56	3.6	8.40	36648416.0					
06/14/2016	18:52:30	-17	0.0	8.44	36648416.0					
06/14/2016	18:53:00	-2	0.0	8.41	36648416.0	Drop Top Plug				
06/14/2016	18:53:30	1	0.0	8.41	36648416.0					
06/14/2016	18:54:00	5	0.0	8.41	36648416.0					
06/14/2016	18:54:30	3	0.0	8.41	36648416.0					
06/14/2016	18:55:00	41	2.0	8.44	36648416.0	Start Displacement				
06/14/2016	18:55:30	16	2.1	8.45	36648416.0					
06/14/2016	18:56:00	58	3.7	8.44	36648416.0					
06/14/2016	18:56:30	55	3.7	8.43	36648416.0					
06/14/2016	18:57:00	55	3.9	8.43	36648416.0					
06/14/2016	18:57:30	95	5.1	8.42	36648416.0					
06/14/2016	18:58:00	154	6.5	8.40	36648416.0					
06/14/2016	18:58:30	239	7.3	8.40	36648416.0					
06/14/2016	18:59:00	237	7.9	8.40	36648416.0					
06/14/2016	18:59:30	241	7.9	8.41	36648416.0					
06/14/2016	19:00:00	238	7.9	8.41	36648416.0					
06/14/2016	19:00:30	235	7.9	8.41	36648416.0					
06/14/2016	19:01:00	231	7.9	8.41	36648416.0					
06/14/2016	19:01:10	237	7.9	8.41	36648416.0	Good Returns				
06/14/2016	19:01:30	243	7.9	8.41	36648416.0					
06/14/2016	19:02:00	244	7.9	8.41	0.7					
06/14/2016	19:02:30	241	7.9	8.41	4.6					
06/14/2016	19:03:00	243	7.9	8.40	8.5					
06/14/2016	19:03:30	237	7.9	8.40	12.5					

Well			Field	Job Start		Customer	Job Number
Land Fed 29N-29HZ			Wattenberg	Jun/14/2016		Anadarko	DMBW-00127
Date	Time 24-hr clock	Treating Pressure PSI	Flow Rate B/M	Density LB/G	Volume BBL	Message	
06/14/2016	19:04:30	541	7.9	8.40	20.4		
06/14/2016	19:05:00	569	7.8	8.40	24.3		
06/14/2016	19:05:30	621	7.9	8.40	28.2		
06/14/2016	19:06:00	668	7.8	8.40	32.1		
06/14/2016	19:06:30	703	7.8	8.40	36.0		
06/14/2016	19:07:00	739	7.8	8.40	40.0		
06/14/2016	19:07:30	795	7.9	8.40	43.9		
06/14/2016	19:08:00	854	7.8	8.40	47.8		
06/14/2016	19:08:30	892	7.8	8.40	51.7		
06/14/2016	19:09:00	934	7.8	8.40	55.6		
06/14/2016	19:09:30	986	7.8	8.40	59.5		
06/14/2016	19:10:00	1028	7.8	8.40	63.4		
06/14/2016	19:10:30	1075	7.8	8.40	67.3		
06/14/2016	19:11:00	1127	7.8	8.40	71.2		
06/14/2016	19:11:30	1172	7.8	8.40	75.1		
06/14/2016	19:12:00	1232	7.8	8.40	79.0		
06/14/2016	19:12:30	1282	7.8	8.40	82.9		
06/14/2016	19:13:00	1324	7.8	8.40	86.8		
06/14/2016	19:13:30	1367	7.8	8.40	90.7		
06/14/2016	19:14:00	1442	7.8	8.40	94.6		
06/14/2016	19:14:30	1462	7.8	8.40	98.5		
06/14/2016	19:15:00	1524	7.8	8.40	102.4		
06/14/2016	19:15:30	1588	7.8	8.40	106.3		
06/14/2016	19:16:00	1623	7.8	8.40	110.2		
06/14/2016	19:16:30	1676	7.8	8.40	114.0		
06/14/2016	19:17:00	1718	7.8	8.40	117.9		
06/14/2016	19:17:30	1770	7.8	8.40	121.8		
06/14/2016	19:18:00	1810	7.8	8.40	125.7		
06/14/2016	19:18:30	1847	7.7	8.40	129.5		
06/14/2016	19:19:00	1893	7.8	8.40	133.4		
06/14/2016	19:19:30	1926	7.7	8.40	137.3		
06/14/2016	19:20:00	1930	7.7	8.40	141.1		
06/14/2016	19:20:30	1951	7.8	8.40	145.0		
06/14/2016	19:21:00	1939	7.7	8.40	148.9		
06/14/2016	19:21:30	1960	7.7	8.40	152.8		
06/14/2016	19:22:00	1981	7.7	8.40	156.6		
06/14/2016	19:22:30	1974	7.8	8.40	160.5		
06/14/2016	19:23:00	1997	7.7	8.40	164.3		
06/14/2016	19:23:30	2010	7.7	8.40	168.2		
06/14/2016	19:24:00	2010	7.8	8.40	172.1		
06/14/2016	19:24:30	2022	7.7	8.40	175.9		
06/14/2016	19:25:00	2018	7.7	8.40	179.8		
06/14/2016	19:25:30	2038	7.8	8.40	183.6		
06/14/2016	19:26:00	2054	7.8	8.40	187.5		
06/14/2016	19:26:30	2048	7.7	8.40	191.4		
06/14/2016	19:27:00	2071	7.8	8.40	195.2		
06/14/2016	19:27:30	2074	7.8	8.40	199.1		
06/14/2016	19:28:00	2082	7.7	8.40	203.0		
06/14/2016	19:28:30	2115	7.7	8.40	206.8		
06/14/2016	19:29:00	2116	7.7	8.40	210.7		
06/14/2016	19:29:30	2133	7.7	8.40	214.6		
06/14/2016	19:30:00	2145	7.8	8.40	218.4		
06/14/2016	19:30:30	2156	7.7	8.40	222.3		
06/14/2016	19:31:00	2182	7.7	8.40	226.1		

Well			Field	Job Start		Customer	Job Number
Land Fed 29N-29HZ			Wattenberg	Jun/14/2016		Anadarko	DMBW-00127
Date	Time 24-hr clock	Treating Pressure PSI	Flow Rate B/M	Density LB/G	Volume BBL	Message	
06/14/2016	19:32:00	1707	3.9	8.40	231.1		
06/14/2016	19:32:30	1722	3.9	8.40	233.0		
06/14/2016	19:33:00	1738	3.9	8.40	235.0		
06/14/2016	19:33:30	1592	2.5	8.40	236.6		
06/14/2016	19:34:00	1607	2.5	8.40	237.8		
06/14/2016	19:34:30	1610	2.5	8.40	239.1		
06/14/2016	19:35:00	1631	2.5	8.40	240.3		
06/14/2016	19:35:30	1663	2.5	8.40	241.5		
06/14/2016	19:36:00	1635	2.5	8.40	242.8		
06/14/2016	19:36:30	1676	2.5	8.40	244.0		
06/14/2016	19:37:00	1672	2.5	8.40	245.2		
06/14/2016	19:37:30	1653	2.5	8.40	246.5		
06/14/2016	19:38:00	1628	2.5	8.40	247.7		
06/14/2016	19:38:30	1677	2.5	8.40	248.9		
06/14/2016	19:39:00	1684	2.5	8.40	250.2		
06/14/2016	19:39:30	1636	2.5	8.40	251.4		
06/14/2016	19:40:00	1641	2.5	8.40	252.6		
06/14/2016	19:40:30	1682	2.5	8.40	253.9		
06/14/2016	19:41:00	1652	2.5	8.40	255.1		
06/14/2016	19:41:30	1660	2.5	8.40	256.3		
06/14/2016	19:42:00	1673	2.5	8.40	257.6		
06/14/2016	19:42:30	1706	2.5	8.40	258.8		
06/14/2016	19:43:00	1672	2.5	8.39	260.0		
06/14/2016	19:43:30	1714	2.5	8.40	261.3		
06/14/2016	19:44:00	1692	2.5	8.40	262.5		
06/14/2016	19:44:30	2232	0.0	8.40	263.3		
06/14/2016	19:45:00	2271	0.0	8.40	263.3	Bump Top Plug	
06/14/2016	19:45:20	2238	0.0	8.40	263.3	End Displacement	
06/14/2016	19:45:30	2254	0.0	8.40	263.3		
06/14/2016	19:45:45	2269	0.0	8.40	263.3	Reset Total, Vol = 299.70 bbls	
06/14/2016	19:45:46	2252	0.0	8.40	263.3	Mud/Spacer Interface Back	
06/14/2016	19:45:47	2252	0.0	8.40	263.3	Est. Top of Lead: 828'	
06/14/2016	19:45:48	2243	0.0	8.40	263.3	Est. Top of Tail: 5,534'	
06/14/2016	19:46:00	2267	0.0	8.40	263.3	Csg Test	
06/14/2016	19:46:30	2265	0.0	8.40	263.3		
06/14/2016	19:47:00	2562	0.8	8.40	263.5		
06/14/2016	19:47:30	2966	0.6	8.40	264.0		
06/14/2016	19:48:00	3010	0.0	8.40	264.0	3000 psi for 15 mins	
06/14/2016	19:48:30	3008	0.0	8.40	264.0		
06/14/2016	19:49:00	3025	0.0	8.40	264.0		
06/14/2016	19:49:30	3024	0.0	8.40	264.0		
06/14/2016	19:50:00	3041	0.0	8.40	264.0		
06/14/2016	19:50:30	3046	0.0	8.40	264.0		
06/14/2016	19:51:00	3058	0.0	8.40	264.0		
06/14/2016	19:51:30	3068	0.0	8.40	264.0		
06/14/2016	19:52:00	3077	0.0	8.40	264.0		
06/14/2016	19:52:30	3088	0.0	8.40	264.0		
06/14/2016	19:53:00	3096	0.0	8.40	0.0		
06/14/2016	19:53:30	3106	0.0	8.40	0.0		
06/14/2016	19:54:00	3116	0.0	8.40	0.0		
06/14/2016	19:54:30	3125	0.0	8.40	0.0		
06/14/2016	19:55:00	3134	0.0	8.40	0.0		
06/14/2016	19:55:30	3143	0.0	8.40	0.0		
06/14/2016	19:56:00	3152	0.0	8.40	0.0		

Well			Field		Job Start		Customer		Job Number	
Land Fed 29N-29HZ			Wattenberg		Jun/14/2016		Anadarko		DMBW-00127	
Date	Time 24-hr clock	Treating Pressure PSI	Flow Rate B/M	Density LB/G	Volume BBL	Message				
06/14/2016	19:57:00	3169	0.0	8.40	0.0					
06/14/2016	19:57:30	3178	0.0	8.40	15.2					
06/14/2016	19:58:00	3186	0.0	8.40	15.2					
06/14/2016	19:58:30	3195	0.0	8.40	22.9					
06/14/2016	19:59:00	3203	0.0	8.40	22.9					
06/14/2016	19:59:30	3211	0.0	8.40	38.1					
06/14/2016	20:00:00	3220	0.0	8.40	38.1					
06/14/2016	20:00:30	3228	0.0	8.40	38.1					
06/14/2016	20:01:00	3236	0.0	8.40	38.1					
06/14/2016	20:01:30	3244	0.0	8.40	38.1					
06/14/2016	20:02:00	3252	0.0	8.40	38.1	Csg Test: Good				
06/14/2016	20:02:30	3259	0.0	8.40	38.1	Floats Held, 3 bbls back				
06/14/2016	20:03:00	633	0.0	8.40	38.1					
06/14/2016	20:03:30	-12	0.0	8.40	38.1					
06/14/2016	20:03:55	-4	0.0	8.40	38.1	End Job				
06/14/2016	20:04:00	-4	0.0	8.40	38.1					

Post Job Summary

Average Pump Rates, bbl/min					Volume of Fluid Injected, bbl			
Slurry 158296.1	N2	Mud	Maximum Rate 1465927040.0	Total Slurry 506.0	Mud 0.0	Spacer 60.0	N2	
Treating Pressure Summary, psi					Breakdown Fluid			
Maximum 4517	Final 2	Average 889	Bump Plug to 2200	Breakdown	Type	Volume bbl	Density lb/gal	
Avg. N2 Percent %		Designed Slurry Volume 493.0 bbl	Displacement 299.7 bbl	Mix Water Temp 70 degF	Cement Circulated to Surface? <input type="checkbox"/>	Volume bbl		
					Washed Thru Perfs <input type="checkbox"/>	To ft		
Customer or Authorized Representative Lance Fatheree			Schlumberger Supervisor Matlock/Leiker			Circulation Lost <input type="checkbox"/>	Job Completed <input checked="" type="checkbox"/>	
						-	-	