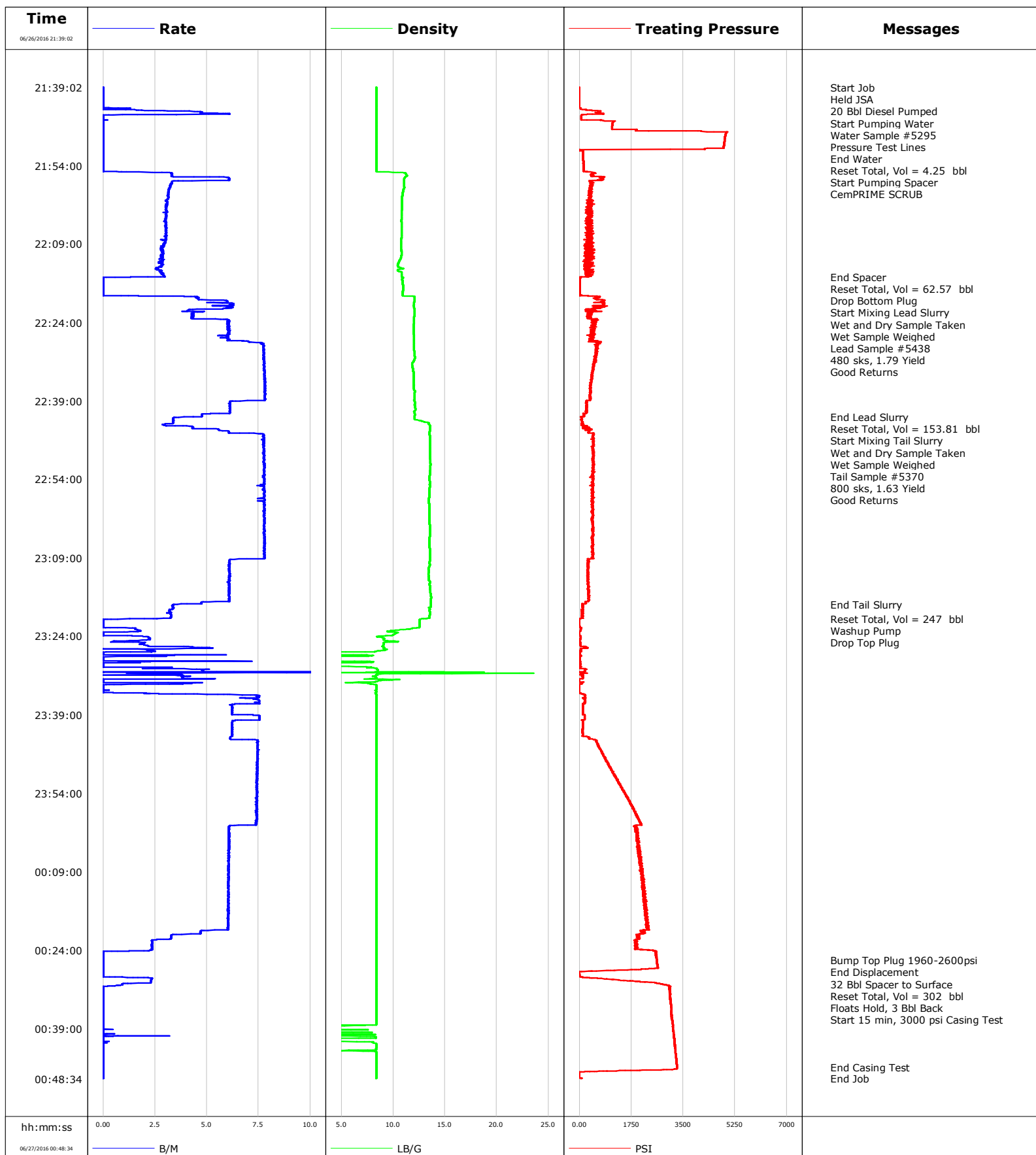


Well Land Fed 29C-29HZ
Field Wattenberg
Engineer Ryan Drilling
Country United States

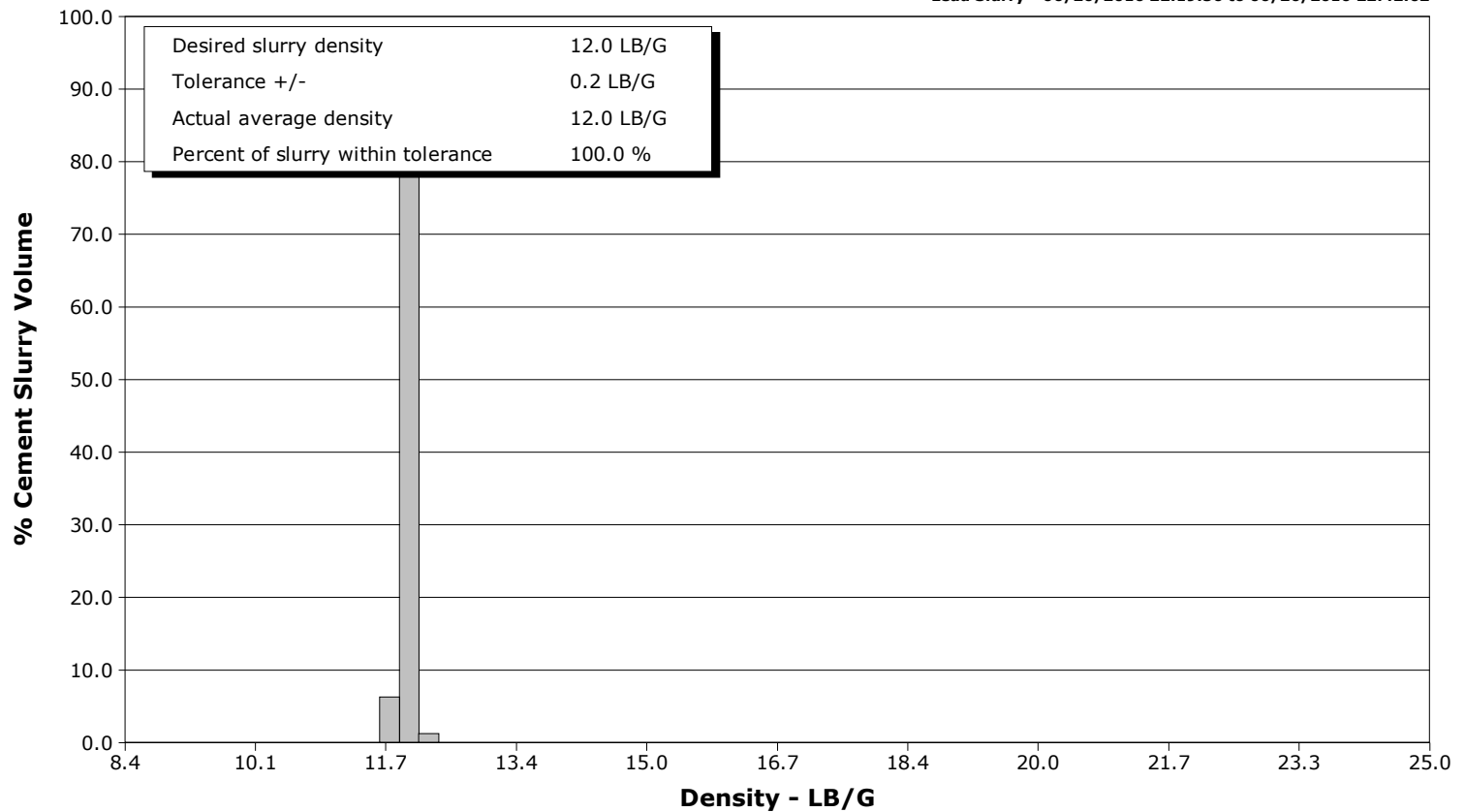
Client Anadarko
SIR No. DJT7-00304
Job Type 5.5 Production
Job Date 06-26-2016



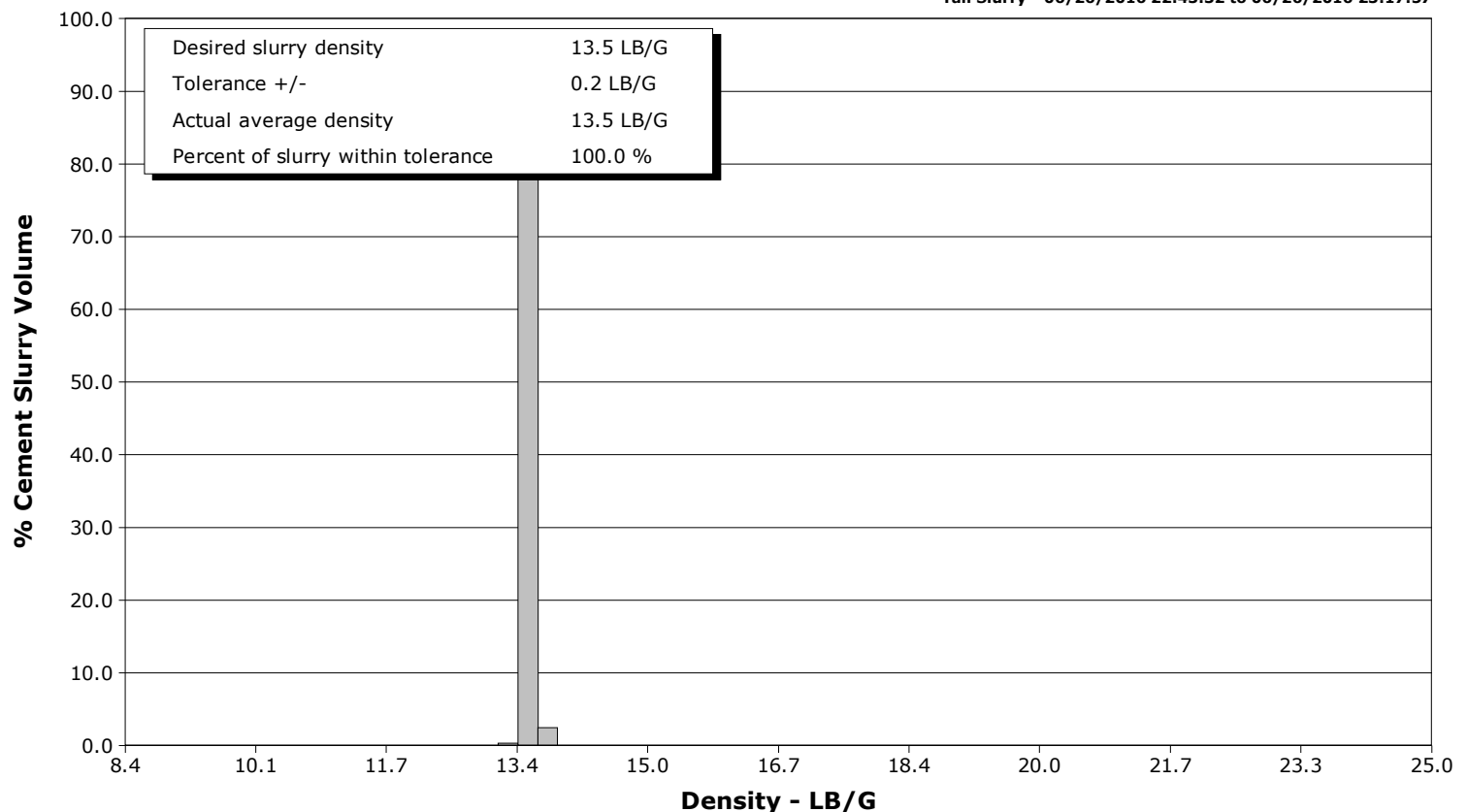
Well Land Fed 29C-29HZ
Field Wattenberg
Engineer Ryan Drilling
Country United States

Client Anadarko
SIR No. DJT7-00304
Job Type 5.5 Production
Job Date 06-26-2016

Lead Slurry - 06/26/2016 22:19:56 to 06/26/2016 22:42:02



Tail Slurry - 06/26/2016 22:43:32 to 06/26/2016 23:17:57



Cementing Service Report

				Customer Anadarko			Job Number DJT7-00304				
Well Land Fed 29C-29HZ			Location (legal) CWY			Schlumberger Location Rock Springs			Job Start Jun/26/2016		
Field Wattenberg		Formation Name/Type Shale		Deviation 90 deg		Bit Size 7.9 in		Well MD 13116.0 ft		Well TVD 7431.0 ft	
County Weld		State/Province Colorado		BHP psi		BHST 231 degF		BHCT 228 degF		Pore Press. Gradient lb/gal	
Well Master 0631662925		API/UWI									
Rig Name Precision 461		Drilled For Oil		Service Via Land		Casing/Liner					
						Depth, ft		Size, in		Weight, lb/ft	
										Grade	
										Thread	
Offshore Zone		Well Class New		Well Type Development		1871.0		9.6		36.0	
						13106.7		5.5		17.0	
										j55	
										p110	
										lrc	
Drilling Fluid Type		Max. Density lb/gal		Plastic Viscosity cP		Tubing/Drill Pipe					
						T/D		Depth, ft		Size, in	
										Weight, lb/ft	
										Grade	
										Thread	
Service Line Cementing		Job Type 5.5 Production									
Max. Allowed Tub. Press psi		Max. Allowed Ann. Press psi		WH Connection Double Cement head		Perforations/Open Hole					
						Top, ft		Bottom, ft		shot/ft	
										No. of Shots	
										Total Interval	
						ft		ft		ft	
						ft		ft		Diameter	
						ft		ft		in	
						Treat Down Casing		Displacement 302.5 bbl		Packer Type	
										Packer Depth	
										ft	
						Tubing Vol. bbl		Casing Vol. bbl		Annular Vol. 89.0 bbl	
										Openhole Vol. 347.0 bbl	
Casing/Tubing Secured <input checked="" type="checkbox"/>		1 Hole Vol. Circulated prior to Cement <input checked="" type="checkbox"/>				Casing Tools		Squeeze Job			
Lift Pressure 1960 psi						Shoe Type Float		Squeeze Type			
Pipe Rotated <input type="checkbox"/>		Pipe Reciprocated <input type="checkbox"/>				Shoe Depth 13106.7 ft		Tool Type			
No. Centralizers		Top Plugs 1		Bottom Plugs 1		Stage Tool Type		Tool Depth ft			
Cement Head Type Double						Stage Tool Depth ft		Tail Pipe Size in			
Job Scheduled For Jun/26/2016 18:00		Arrived on Location Jun/26/2016 18:00		Leave Location Jun/27/2016 02:00		Collar Type Float		Tail Pipe Depth ft			
						Collar Depth 13013.0 ft		Sqz. Total Vol. bbl			
Date	Time 24-hr clock	Treating Pressure PSI	Flow Rate B/M	Density LB/G	Volume BBL	Message					
06/26/2016	21:39:02	-6	0.0	8.39	0.0	Started Acquisition					
06/26/2016	21:39:03	-6	0.0	8.39	0.0	Start Job					
06/26/2016	21:39:04	-6	0.0	8.39	0.0	Held JSA					
06/26/2016	21:39:12	-6	0.0	8.39	0.0	20 Bbl Diesel Pumped					
06/26/2016	21:39:22	-6	0.0	8.39	0.0	Start Pumping Water					
06/26/2016	21:39:23	-6	0.0	8.39	0.0	Water Sample #5295					
06/26/2016	21:39:24	-7	0.0	8.39	0.0	Pressure Test Lines					
06/26/2016	21:39:47	-6	0.0	8.39	0.0						
06/26/2016	21:40:32	-7	0.0	8.39	0.0						
06/26/2016	21:41:17	-6	0.0	8.39	0.0						
06/26/2016	21:42:02	-6	0.0	8.39	0.0						
06/26/2016	21:42:47	-9	0.0	8.39	0.0						
06/26/2016	21:43:32	525	2.8	8.35	0.6						
06/26/2016	21:44:17	145	2.7	8.35	4.2						
06/26/2016	21:45:02	56	0.0	8.35	4.2						
06/26/2016	21:45:47	1125	0.0	8.35	4.2						
06/26/2016	21:46:32	1102	0.0	8.36	4.2						
06/26/2016	21:47:17	1914	0.0	8.35	4.2						
06/26/2016	21:48:02	4938	0.0	8.35	4.2						
06/26/2016	21:48:47	4910	0.0	8.35	4.2						
06/26/2016	21:49:32	4890	0.0	8.35	4.2						

Well			Field	Job Start		Customer		Job Number	
Land Fed 29C-29HZ			Wattenberg		Jun/26/2016		Anadarko		DJT7-00304
Date	Time 24-hr clock	Treating Pressure PSI	Flow Rate B/M	Density LB/G	Volume BBL	Message			
06/26/2016	21:51:02	8	0.0	8.35	4.2				
06/26/2016	21:51:47	124	0.0	8.36	4.2				
06/26/2016	21:52:12	123	0.0	8.36	4.2	End Water			
06/26/2016	21:52:13	122	0.0	8.36	4.2	Reset Total, Vol = 4.25 bbl			
06/26/2016	21:52:21	124	0.0	8.35	0.0	Start Pumping Spacer			
06/26/2016	21:52:32	125	0.0	8.36	0.0				
06/26/2016	21:52:45	130	0.0	8.36	0.0	CemPRIME SCRUB			
06/26/2016	21:53:17	137	0.0	8.36	0.0				
06/26/2016	21:54:02	138	0.0	8.36	0.0				
06/26/2016	21:54:47	141	0.0	8.35	0.0				
06/26/2016	21:55:32	510	3.3	11.21	0.8				
06/26/2016	21:56:17	808	6.0	11.16	3.5				
06/26/2016	21:57:02	386	3.3	11.05	7.8				
06/26/2016	21:57:47	383	3.3	11.06	10.2				
06/26/2016	21:58:32	427	3.2	11.01	12.7				
06/26/2016	21:59:17	356	3.2	10.92	15.0				
06/26/2016	22:00:02	358	3.1	10.88	17.4				
06/26/2016	22:00:47	340	3.0	10.88	19.7				
06/26/2016	22:01:32	325	3.1	10.86	22.0				
06/26/2016	22:02:17	332	3.1	10.84	24.3				
06/26/2016	22:03:02	332	2.9	10.82	26.6				
06/26/2016	22:03:47	422	3.0	10.81	28.9				
06/26/2016	22:04:32	431	3.0	10.79	31.1				
06/26/2016	22:05:17	279	3.1	10.82	33.4				
06/26/2016	22:06:02	274	3.0	10.81	35.7				
06/26/2016	22:06:47	273	3.1	10.80	37.9				
06/26/2016	22:07:32	405	3.0	10.80	40.2				
06/26/2016	22:08:17	247	2.9	10.77	42.5				
06/26/2016	22:09:02	233	2.9	10.77	44.7				
06/26/2016	22:09:47	387	2.9	10.78	46.9				
06/26/2016	22:10:32	335	2.9	10.80	49.0				
06/26/2016	22:11:17	294	2.8	10.79	51.2				
06/26/2016	22:12:02	375	2.9	10.67	53.3				
06/26/2016	22:12:47	458	2.8	10.49	55.4				
06/26/2016	22:13:32	235	2.6	10.66	57.5				
06/26/2016	22:14:17	490	2.8	10.67	59.5				
06/26/2016	22:15:02	305	2.9	10.83	61.6				
06/26/2016	22:15:20	78	2.2	10.86	62.5	End Spacer			
06/26/2016	22:15:22	21	1.3	10.90	62.6	Reset Total, Vol = 62.57 bbl			
06/26/2016	22:15:28	32	0.0	10.95	0.0	Drop Bottom Plug			
06/26/2016	22:15:47	12	0.0	10.87	0.0				
06/26/2016	22:16:32	12	0.0	10.93	0.0				
06/26/2016	22:17:17	7	0.0	10.94	0.0				
06/26/2016	22:18:02	5	0.0	10.93	0.0				
06/26/2016	22:18:47	12	0.0	10.93	0.0				
06/26/2016	22:19:32	585	4.6	12.07	2.6				
06/26/2016	22:19:56	821	6.0	12.05	4.7	Start Mixing Lead Slurry			
06/26/2016	22:19:57	821	6.0	12.05	4.8	Wet and Dry Sample Taken			
06/26/2016	22:19:58	837	6.0	12.05	4.9	Wet Sample Weighed			
06/26/2016	22:19:59	837	6.0	12.05	5.0	480 sks, 1.79 Yield			
06/26/2016	22:20:17	858	5.7	12.02	6.7				
06/26/2016	22:21:02	866	6.2	12.01	11.3				
06/26/2016	22:21:47	562	4.1	12.05	15.2				
06/26/2016	22:22:32	382	4.4	12.04	18.5				

Well			Field		Job Start		Customer		Job Number	
Land Fed 29C-29HZ			Wattenberg		Jun/26/2016		Anadarko		DJT7-00304	
Date	Time 24-hr clock	Treating Pressure PSI		Flow Rate B/M	Density LB/G		Volume BBL		Message	
06/26/2016	22:23:46	558		6.1	11.99		24.5		Good Returns	
06/26/2016	22:24:02	462		6.0	11.99		26.1			
06/26/2016	22:24:47	549		6.1	11.97		30.6			
06/26/2016	22:25:32	489		6.1	11.96		35.1			
06/26/2016	22:26:17	478		6.0	11.99		39.7			
06/26/2016	22:27:02	449		6.0	11.99		44.1			
06/26/2016	22:27:47	629		7.1	12.00		48.9			
06/26/2016	22:28:32	570		7.7	12.01		54.6			
06/26/2016	22:29:17	559		7.7	12.02		60.4			
06/26/2016	22:30:02	576		7.8	12.06		66.2			
06/26/2016	22:30:47	578		7.7	12.09		72.1			
06/26/2016	22:31:32	554		7.8	11.95		77.9			
06/26/2016	22:32:17	470		7.8	11.84		83.7			
06/26/2016	22:33:02	469		7.8	11.91		89.5			
06/26/2016	22:33:47	426		7.8	11.95		95.3			
06/26/2016	22:34:32	435		7.8	11.96		101.2			
06/26/2016	22:35:17	391		7.8	11.98		107.0			
06/26/2016	22:36:02	383		7.8	11.99		112.9			
06/26/2016	22:36:47	381		7.8	11.99		118.7			
06/26/2016	22:37:32	364		7.8	12.04		124.6			
06/26/2016	22:38:17	350		7.8	12.04		130.4			
06/26/2016	22:39:02	224		6.2	12.06		136.2			
06/26/2016	22:39:47	230		6.1	12.07		140.8			
06/26/2016	22:40:32	228		6.1	12.16		145.3			
06/26/2016	22:41:17	238		6.1	12.06		149.9			
06/26/2016	22:42:02	162		4.8	12.08		153.7		End Lead Slurry	
06/26/2016	22:42:03	47		4.8	12.08		153.8		Reset Total, Vol = 153.81 bbl	
06/26/2016	22:42:47	90		3.4	12.61		2.5			
06/26/2016	22:43:32	102		2.9	13.48		5.0		Start Mixing Tail Slurry	
06/26/2016	22:43:34	87		2.9	13.50		5.1		Wet and Dry Sample Taken	
06/26/2016	22:43:35	153		2.9	13.50		5.2		800 sks, 1.63 Yield	
06/26/2016	22:44:17	224		4.4	13.55		7.9			
06/26/2016	22:45:02	308		6.1	13.50		12.1			
06/26/2016	22:45:47	463		7.7	13.52		17.6			
06/26/2016	22:46:32	457		7.8	13.54		23.4			
06/26/2016	22:47:17	467		7.7	13.54		29.2			
06/26/2016	22:48:02	461		7.7	13.54		35.0			
06/26/2016	22:48:47	450		7.7	13.55		40.9			
06/26/2016	22:49:32	467		7.8	13.55		46.7			
06/26/2016	22:50:17	455		7.8	13.57		52.5			
06/26/2016	22:51:02	481		7.8	13.61		58.3			
06/26/2016	22:51:47	444		7.8	13.59		64.1			
06/26/2016	22:52:32	435		7.8	13.55		70.0			
06/26/2016	22:53:17	471		7.7	13.52		75.8			
06/26/2016	22:54:02	438		7.8	13.49		81.6			
06/26/2016	22:54:47	457		7.8	13.53		87.4			
06/26/2016	22:55:32	458		7.8	13.52		93.2			
06/26/2016	22:56:17	437		7.8	13.49		99.0			
06/26/2016	22:57:02	467		7.8	13.49		104.9			
06/26/2016	22:57:47	464		7.8	13.46		110.7			
06/26/2016	22:58:32	463		7.8	13.46		116.5			
06/26/2016	22:59:17	449		7.8	13.48		122.3			
06/26/2016	23:00:02	432		7.8	13.49		128.1			
06/26/2016	23:00:47	450		7.8	13.51		134.0			

Well			Field		Job Start		Customer		Job Number	
Land Fed 29C-29HZ			Wattenberg		Jun/26/2016		Anadarko		DJT7-00304	
Date	Time 24-hr clock	Treating Pressure PSI		Flow Rate B/M	Density LB/G		Volume BBL		Message	
06/26/2016	23:02:17	435		7.8	13.50		145.6			
06/26/2016	23:03:02	468		7.8	13.53		151.4			
06/26/2016	23:03:47	444		7.8	13.54		157.3			
06/26/2016	23:04:32	462		7.8	13.53		163.1			
06/26/2016	23:05:17	415		7.8	13.51		168.9			
06/26/2016	23:06:02	454		7.8	13.50		174.8			
06/26/2016	23:06:47	418		7.8	13.51		180.6			
06/26/2016	23:07:32	440		7.8	13.53		186.4			
06/26/2016	23:08:17	440		7.8	13.55		192.2			
06/26/2016	23:09:02	436		7.8	13.54		198.1			
06/26/2016	23:09:47	328		6.1	13.49		203.0			
06/26/2016	23:10:32	273		6.1	13.51		207.6			
06/26/2016	23:11:17	279		6.1	13.42		212.1			
06/26/2016	23:12:02	286		6.1	13.41		216.7			
06/26/2016	23:12:47	289		6.1	13.45		221.3			
06/26/2016	23:13:32	286		6.1	13.55		225.8			
06/26/2016	23:14:17	288		6.1	13.55		230.4			
06/26/2016	23:15:02	295		6.1	13.54		234.9			
06/26/2016	23:15:47	299		6.1	13.61		239.5			
06/26/2016	23:16:32	306		6.1	13.68		244.1			
06/26/2016	23:17:17	302		6.1	13.65		248.6			
06/26/2016	23:17:57	132		3.4	13.64		251.8	End Tail Slurry		
06/26/2016	23:18:02	132		3.4	13.64		252.1			
06/26/2016	23:18:47	107		3.4	13.54		254.6			
06/26/2016	23:19:32	84		3.2	13.52		257.0			
06/26/2016	23:20:17	128		3.3	13.50		259.5			
06/26/2016	23:20:38	15		2.6	13.21		260.6	Reset Total, Vol = 247 bbl		
06/26/2016	23:20:40	1		2.0	12.91		0.1	Washup Pump		
06/26/2016	23:20:55	-6		0.0	12.55		0.2	Drop Top Plug		
06/26/2016	23:21:02	-10		0.0	12.55		0.2			
06/26/2016	23:21:47	-7		0.0	12.55		0.2			
06/26/2016	23:22:32	52		1.6	11.83		0.4			
06/26/2016	23:23:17	-7		0.0	10.43		1.5			
06/26/2016	23:24:02	35		2.1	8.47		1.7			
06/26/2016	23:24:47	4		1.7	9.27		3.4			
06/26/2016	23:25:32	23		1.8	9.09		4.5			
06/26/2016	23:26:17	279		5.3	9.10		6.9			
06/26/2016	23:27:02	35		0.2	4.04		8.7			
06/26/2016	23:27:47	46		2.5	7.71		9.5			
06/26/2016	23:28:32	3		0.0	2.21		9.7			
06/26/2016	23:29:17	43		0.0	0.19		10.6			
06/26/2016	23:30:02	26		2.4	7.96		10.8			
06/26/2016	23:30:47	-5		11.0	8.57		13.9			
06/26/2016	23:31:32	112		3.7	8.37		16.6			
06/26/2016	23:32:17	-14		0.0	10.66		19.2			
06/26/2016	23:33:02	96		4.3	7.56		20.0			
06/26/2016	23:33:47	-9		0.0	8.37		20.6			
06/26/2016	23:34:32	-8		0.0	8.36		20.6			
06/26/2016	23:35:17	187		7.4	8.40		22.6			
06/26/2016	23:36:02	184		7.4	8.38		28.1			
06/26/2016	23:36:47	172		7.5	8.37		33.7			
06/26/2016	23:37:32	112		6.2	8.37		38.6			
06/26/2016	23:38:17	110		6.2	8.37		43.2			
06/26/2016	23:39:02	179		7.0	8.38		1.9			

Well			Field	Job Start		Customer		Job Number	
Land Fed 29C-29HZ			Wattenberg		Jun/26/2016		Anadarko		DJT7-00304
Date	Time 24-hr clock	Treating Pressure PSI	Flow Rate B/M	Density LB/G	Volume BBL	Message			
06/26/2016	23:40:32	115	6.2	8.37	12.5				
06/26/2016	23:41:17	107	6.2	8.37	17.2				
06/26/2016	23:42:02	107	6.2	8.36	21.9				
06/26/2016	23:42:47	107	6.2	8.36	26.5				
06/26/2016	23:43:32	325	6.1	8.37	31.2				
06/26/2016	23:44:17	593	7.5	8.37	36.5				
06/26/2016	23:45:02	650	7.4	8.37	42.1				
06/26/2016	23:45:47	720	7.5	8.37	47.7				
06/26/2016	23:46:32	805	7.4	8.37	53.3				
06/26/2016	23:47:17	875	7.5	8.36	58.8				
06/26/2016	23:48:02	911	7.4	8.37	64.4				
06/26/2016	23:48:47	996	7.4	8.37	70.0				
06/26/2016	23:49:32	1060	7.4	8.36	75.6				
06/26/2016	23:50:17	1151	7.4	8.36	81.2				
06/26/2016	23:51:02	1234	7.4	8.36	86.7				
06/26/2016	23:51:47	1318	7.4	8.36	92.3				
06/26/2016	23:52:32	1380	7.4	8.36	97.8				
06/26/2016	23:53:17	1457	7.4	8.36	103.4				
06/26/2016	23:54:02	1525	7.4	8.36	108.9				
06/26/2016	23:54:47	1625	7.4	8.36	114.5				
06/26/2016	23:55:32	1675	7.4	8.36	120.1				
06/26/2016	23:56:17	1766	7.4	8.36	125.6				
06/26/2016	23:57:02	1831	7.4	8.36	131.2				
06/26/2016	23:57:47	1879	7.4	8.36	136.7				
06/26/2016	23:58:32	1964	7.4	8.36	142.3				
06/26/2016	23:59:17	2018	7.4	8.36	147.8				
06/27/2016	00:00:02	2077	7.4	8.36	153.3				
06/27/2016	00:00:47	1902	6.1	8.36	158.0				
06/27/2016	00:01:32	1955	6.1	8.36	162.6				
06/27/2016	00:02:17	1972	6.1	8.36	167.1				
06/27/2016	00:03:02	1959	6.1	8.36	171.7				
06/27/2016	00:03:47	1965	6.1	8.36	176.2				
06/27/2016	00:04:32	2017	6.1	8.36	180.8				
06/27/2016	00:05:17	2039	6.1	8.36	185.3				
06/27/2016	00:06:02	1992	6.0	8.36	189.9				
06/27/2016	00:06:47	2076	6.0	8.36	194.4				
06/27/2016	00:07:32	2092	6.0	8.36	198.9				
06/27/2016	00:08:17	2062	6.0	8.36	203.5				
06/27/2016	00:09:02	2115	6.1	8.36	208.0				
06/27/2016	00:09:47	2151	6.0	8.36	212.5				
06/27/2016	00:10:32	2123	6.1	8.36	217.1				
06/27/2016	00:11:17	2122	6.0	8.36	221.6				
06/27/2016	00:12:02	2200	6.0	8.36	226.1				
06/27/2016	00:12:47	2163	6.0	8.36	230.7				
06/27/2016	00:13:32	2166	6.0	8.36	235.2				
06/27/2016	00:14:17	2224	6.0	8.36	239.7				
06/27/2016	00:15:02	2185	6.0	8.36	244.3				
06/27/2016	00:15:47	2247	6.0	8.36	248.8				
06/27/2016	00:16:32	2249	6.0	8.36	253.3				
06/27/2016	00:17:17	2218	6.0	8.36	257.8				
06/27/2016	00:18:02	2270	6.0	8.36	262.4				
06/27/2016	00:18:47	2293	6.0	8.36	266.9				
06/27/2016	00:19:32	2281	6.0	8.36	271.4				
06/27/2016	00:20:17	2124	4.7	8.36	275.8				

Well			Field		Job Start	Customer	Job Number
Land Fed 29C-29HZ			Wattenberg		Jun/26/2016	Anadarko	DJT7-00304
Date	Time 24-hr clock	Treating Pressure PSI	Flow Rate B/M	Density LB/G	Volume BBL	Message	
06/27/2016	00:21:47	2007	3.3	8.36	281.7		
06/27/2016	00:22:32	1913	2.4	8.36	283.6		
06/27/2016	00:23:17	1871	2.4	8.36	285.4		
06/27/2016	00:24:02	2478	2.3	8.36	287.1		
06/27/2016	00:24:47	2569	0.0	8.36	287.4		
06/27/2016	00:25:32	2601	0.0	8.36	287.4		
06/27/2016	00:25:56	2616	0.0	8.36	287.4	Bump Top Plug 1960-2600psi	
06/27/2016	00:25:58	2604	0.0	8.36	287.4	End Displacement	
06/27/2016	00:26:17	2624	0.0	8.36	287.4		
06/27/2016	00:26:30	2623	0.0	8.36	287.4	32 Bbl Spacer to Surface	
06/27/2016	00:26:34	2629	0.0	8.36	287.4	Reset Total, Vol = 302 bbl	
06/27/2016	00:27:02	2640	0.0	8.36	0.0		
06/27/2016	00:27:47	1619	0.0	8.36	0.0		
06/27/2016	00:28:06	77	0.0	8.36	0.0	Floats Hold, 3 Bbl Back	
06/27/2016	00:28:32	4	0.0	8.36	0.0		
06/27/2016	00:29:17	344	2.2	8.36	0.2		
06/27/2016	00:30:02	2045	2.3	8.36	2.0		
06/27/2016	00:30:43	3016	0.8	8.36	3.0	Start 15 min, 3000 psi Casing Test	
06/27/2016	00:30:47	3044	0.7	8.36	3.1		
06/27/2016	00:31:32	3035	0.0	8.36	3.1		
06/27/2016	00:32:17	3047	0.0	8.36	3.1		
06/27/2016	00:33:02	3060	0.0	8.36	3.1		
06/27/2016	00:33:47	3078	0.0	8.36	3.1		
06/27/2016	00:34:32	3084	0.0	8.36	3.1		
06/27/2016	00:35:17	3109	0.0	8.35	3.1		
06/27/2016	00:36:02	3091	0.0	8.36	3.1		
06/27/2016	00:36:47	3113	0.0	8.36	3.1		
06/27/2016	00:37:32	3132	0.0	8.36	3.1		
06/27/2016	00:38:17	3153	0.0	8.36	3.1		
06/27/2016	00:39:02	3161	0.0	0.01	3.1		
06/27/2016	00:39:47	3173	0.0	1.38	3.1		
06/27/2016	00:40:32	3192	0.0	8.26	3.2		
06/27/2016	00:41:17	3207	0.0	0.01	3.2		
06/27/2016	00:42:02	3217	0.0	8.36	3.2		
06/27/2016	00:42:47	3232	0.0	8.36	3.2		
06/27/2016	00:43:32	3245	0.0	8.39	3.2		
06/27/2016	00:44:17	3257	0.0	8.37	3.2		
06/27/2016	00:45:02	3270	0.0	8.37	3.2		
06/27/2016	00:45:47	3282	0.0	8.37	3.2		
06/27/2016	00:46:21	3292	0.0	8.38	3.2	End Casing Test	
06/27/2016	00:46:32	3294	0.0	8.38	3.2		
06/27/2016	00:47:17	43	0.0	8.37	3.2		
06/27/2016	00:48:02	-9	0.0	8.37	3.2		

Well Land Fed 29C-29HZ	Field Wattenberg	Job Start Jun/26/2016	Customer Anadarko	Job Number DJT7-00304
----------------------------------	----------------------------	---------------------------------	-----------------------------	---------------------------------

Post Job Summary

Average Pump Rates, bbl/min					Volume of Fluid Injected, bbl			
Slurry 5.7	N2	Mud	Maximum Rate 25.0		Total Slurry 400.0	Mud 0.0	Spacer 60.0	N2
Treating Pressure Summary, psi					Breakdown Fluid			
Maximum 5000	Final 37	Average 1064	Bump Plug to 2600	Breakdown	Type	Volume bbl		Density lb/gal
Avg. N2 Percent %		Designed Slurry Volume 0.0 bbl		Displacement 302.0 bbl	Mix Water Temp 77 degF	Cement Circulated to Surface? <input type="checkbox"/>		Volume bbl
						Washed Thru Perfs <input type="checkbox"/>		To ft
Customer or Authorized Representative			Schlumberger Supervisor Ryan Drilling			Circulation Lost <input type="checkbox"/>		Job Completed <input checked="" type="checkbox"/>
						-		-