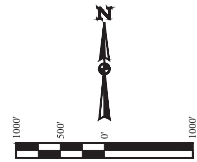


LEGEND:
 — 90° SYMBOL
 ● PROPOSED WELLHEAD
 ○ ENTRY POINT
 ○ TARGET BOTTOM HOLE
 ▲ SECTION CORNERS LOCATED. (NAD 83)
 △ SECTION CORNERS RE-ESTABLISHED.
 (Not Set on Ground.) (NAD 83)

T1N, R67W, 6th P.M.

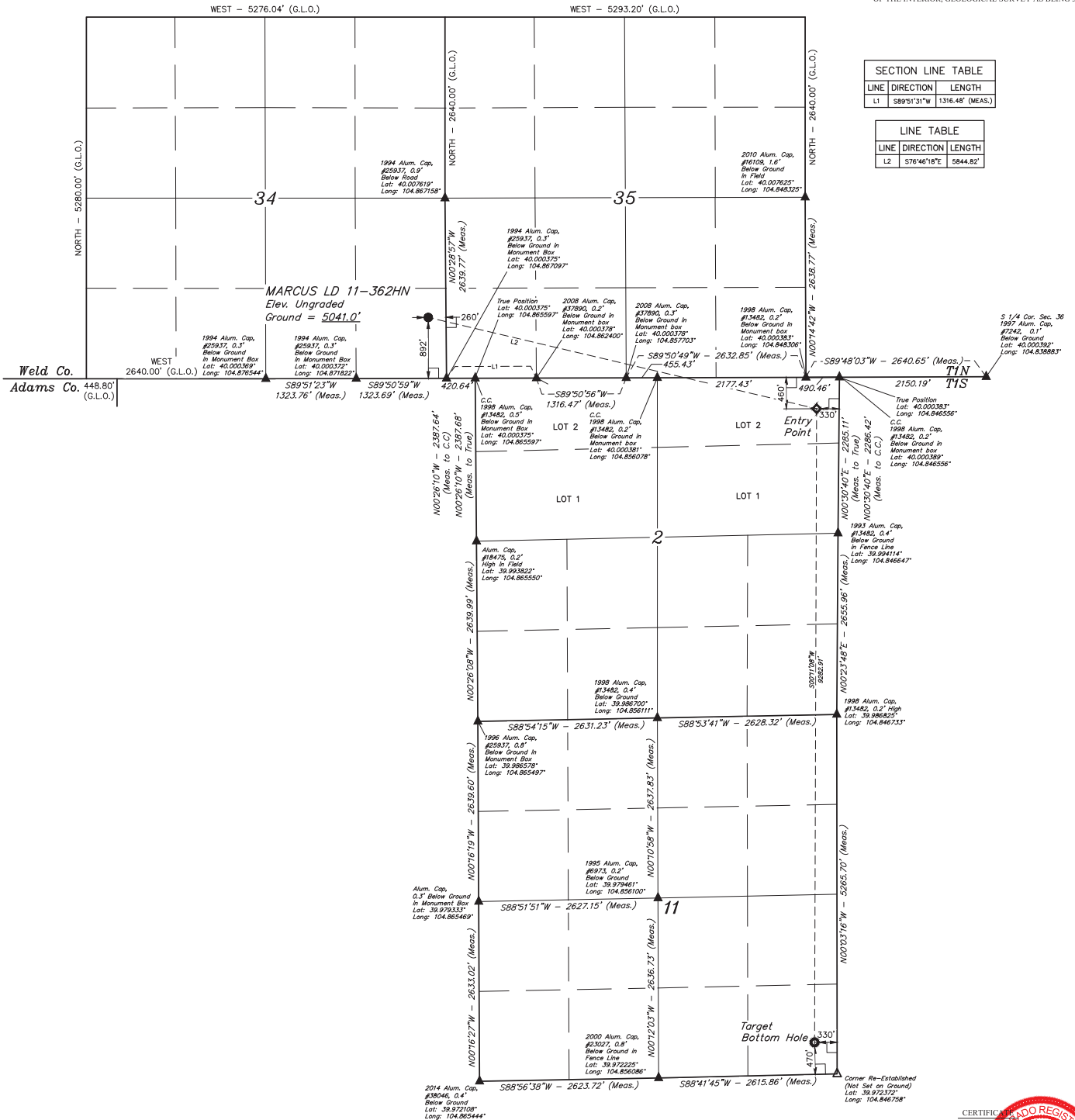


BASIS OF BEARINGS
 BASIS OF BEARINGS IS A G.P.S. OBSERVATION
BASIS OF ELEVATION

BENCHMARK JR 53 5026 LOCATED IN THE SW 1/4 SE 1/4 OF SECTION 18, T1N, R68W, 6th P.M., TAKEN FROM 1988 PUBLISHED DATUM BY THE UNITED STATES DEPARTMENT OF THE INTERIOR, GEOLOGICAL SURVEY AS BEING 5028 FEET.

SECTION LINE TABLE		
LINE	DIRECTION	LENGTH
L1	S89°51'31"W	1316.48' (MEAS.)

LINE TABLE		
LINE	DIRECTION	LENGTH
L2	S76°46'18"E	5844.82'



CERTIFICATE OF REGISTRATION
 THIS IS TO CERTIFY THAT THE ABOVE NAMED SURVEYOR HAS BEEN REGISTERED AS A LAND SURVEYOR UNDER MY SEAL AND THAT THE SAME ARE TRUE AND CORRECT TO THE BEST OF MY KNOWLEDGE AND BELIEF.
 REGISTERED LAND SURVEYOR
 REGISTRATION NO. 28261
 STATE OF COLORADO
 JUNE 16, 2016

REV: 3 04-19-16 C.C. (NAME, EP & BHL CHANGE)
GREAT WESTERN OPERATING COMPANY
 MARCUS LD 11-362HN
 SE 1/4 SE 1/4, SECTION 34, T1N, R67W, 6th P.M.
 WELD COUNTY, COLORADO

UELS, LLC
 Corporate Office * 85 South 200 East
 Vernal, UT 84078 * (435) 789-1017

PDOP = 1.2

NAD 83 (TARGET BOTTOM HOLE)	NAD 83 (ENTRY POINT)	NAD 83 (SURFACE LOCATION)
LATITUDE = 39°58'25.12" (39.973644)	LATITUDE = 39°59'56.83" (39.999119)	LATITUDE = 40°00'10.17" (40.002825)
LONGITUDE = 104°50'52.56" (104.847933)	LONGITUDE = 104°50'51.91" (104.847753)	LONGITUDE = 104°52'04.97" (104.868047)
NAD 27 (TARGET BOTTOM HOLE)	NAD 27 (ENTRY POINT)	NAD 27 (SURFACE LOCATION)
LATITUDE = 39°58'25.18" (39.973661)	LATITUDE = 39°59'56.80" (39.999136)	LATITUDE = 40°00'10.27" (40.002842)
LONGITUDE = 104°50'50.65" (104.847403)	LONGITUDE = 104°50'50.00" (104.847222)	LONGITUDE = 104°52'03.06" (104.867317)

SURVEYED BY: JARED CHRISTOPHER, J.C. DATE: 11-20-14
 DRAWN BY: J.W. DATE DRAWN: 12-01-14
 SCALE: 1" = 1000'
WELL LOCATION PLAT