

1801 Broadway
Suite 500
Denver, Colorado 80202



Allison Linz
Regulatory Technician
Tel: 303.398.0355
E-mail:
regulatorypermitting@gwogco.com

June 7, 2016

Colorado Oil and Gas Conservation Commission
1120 Lincoln Street, Suite 801
Denver, Colorado 80203

RE: **Proposed Wellbore Spacing Unit**
Marcus LD 11-361HN
Niobrara New Drill

SESE Section 34
Township 1N, Range 67W, 6th P.M.
Weld County, Colorado

Dear Director:

Great Western Operating Company, LLC is planning to drill the above captioned well in accordance with the provisions of COGCC Rule 318A.e.

Great Western proposed wellbore spacing unit consists of:

- **1S-67W-Sec 1:W2W2**
- **1S-67W-Sec 2: E2E2**
- **1S-67W-Sec 11:E2E2**
- **1S-67W-Sec 12: W2W2**
- **640 Acres**

The 30 day notification time period has passed and we have not received any objections to such well locations or proposed spacing unit, therefore Great Western hereby requests the Director to approve the above mentioned well. Great Western Operating Company, LLC respectfully requests that the COGCC review the enclosed map illustrating the proposed wellbore spacing unit.

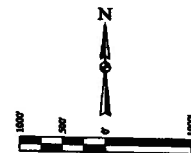
Respectfully,

Allison Linz

Allison Linz
Regulatory Technician
Great Western Operating Company, LLC

T1N, R67W, 6th P.M.

- LEGEND:**
- BY SYMBOL
 - PROPOSED WELLHEAD
 - ENTRY POINT
 - TARGET BOTTOM HOLE
 - ▲ SECTION CORNERS LOCATED (AND SET)
 - △ SECTION CORNERS RE-ESTABLISHED (Not Set on Ground) (AND SET)

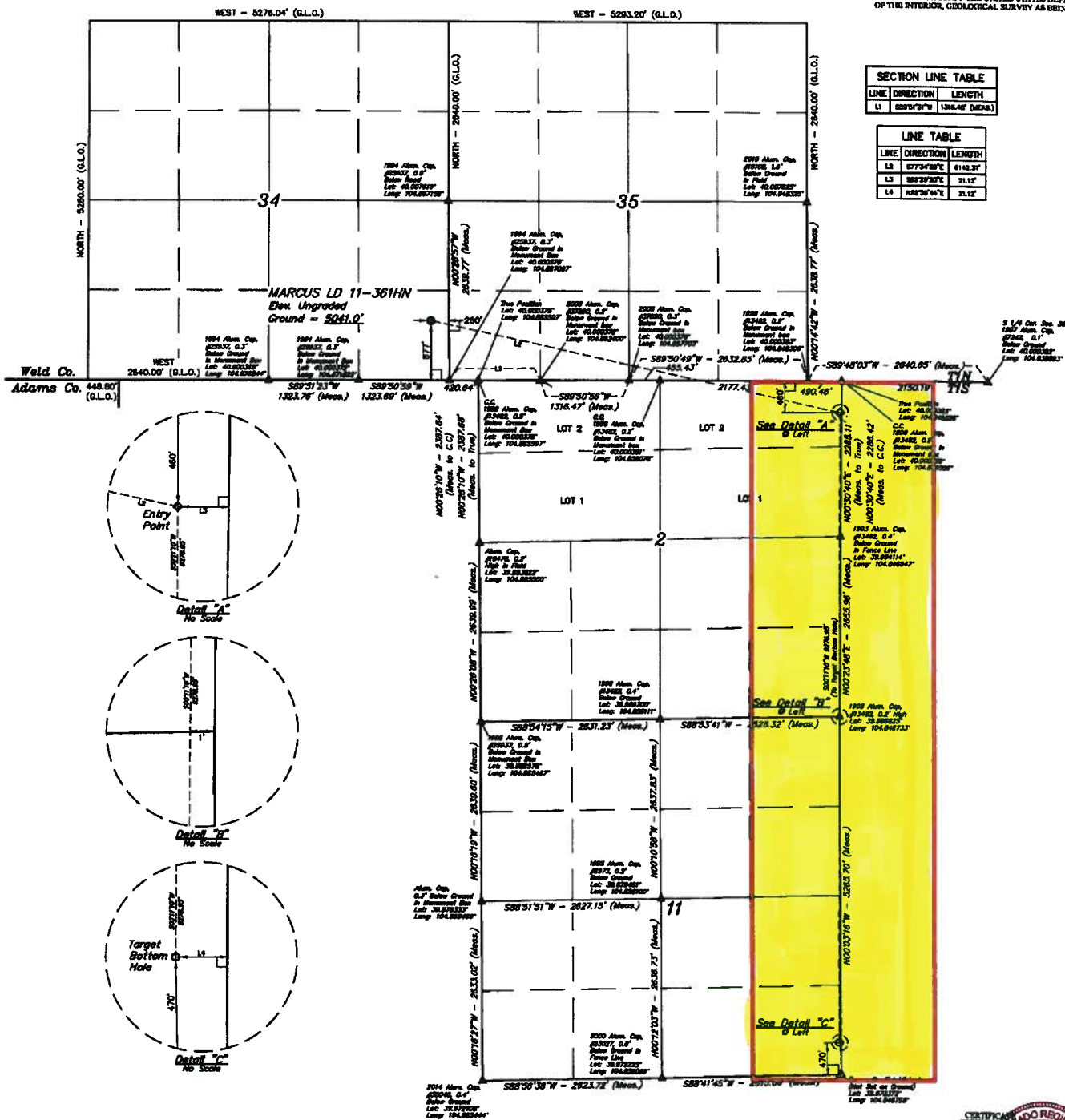


BASE OF BEARINGS
BASE OF ELEVATIONS

WYCHMARK JR. S. 3524 LOCATED IN T1N BY 1/4 SEC 1/4 OF SECTION 18, T1N, R67W, 6th P.M., TAKEN FROM 1988 PUBLISHED DATUM BY THE UNITED STATES DEPARTMENT OF THE INTERIOR, GEOLOGICAL SURVEY AS BEING 5028 FEET.

SECTION LINE TABLE		
LINE	DIRECTION	LENGTH
L1	S89°53'30"W	1386.48' (MEAS.)

LINE TABLE		
LINE	DIRECTION	LENGTH
L2	S77°42'30"E	6148.37'
L3	S89°53'30"E	31.12'
L4	S89°53'44"E	31.12'



REVISION 06-19-16 C.C. (NAME, DP & BILL CHANGED)
GREAT WESTERN OPERATING COMPANY
 MARCUS LD 11-361HN
 SE 1/4 SEC 1/4, SECTION 34, T1N, R67W, 6th P.M.
 WELD COUNTY, COLORADO

UWLS, LLC
 Corporate Office • 25 South 200 East
 Vernal, UT 84078 • (435) 789-1017

WELL LOCATION PLAN

REVIEWED BY: JARED CHRISTENSEN, J.C.	DATE: 02-28-14
CREATED BY: J.W.	DATE: 02-28-14
SCALE: 1" = 100'	

WELL NAME	WELL TYPE	WELL STATUS	WELL DEPTH	WELL LOCATION
MARCUS LD 11-361HN	Oil & Gas	Active	10,000'	SE 1/4 SEC 1/4, SECTION 34, T1N, R67W, 6th P.M.
MARCUS LD 11-361HN	Oil & Gas	Active	10,000'	SE 1/4 SEC 1/4, SECTION 34, T1N, R67W, 6th P.M.
MARCUS LD 11-361HN	Oil & Gas	Active	10,000'	SE 1/4 SEC 1/4, SECTION 34, T1N, R67W, 6th P.M.
MARCUS LD 11-361HN	Oil & Gas	Active	10,000'	SE 1/4 SEC 1/4, SECTION 34, T1N, R67W, 6th P.M.