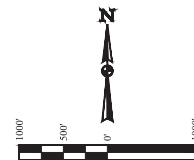


T1N, R67W, 6th P.M.

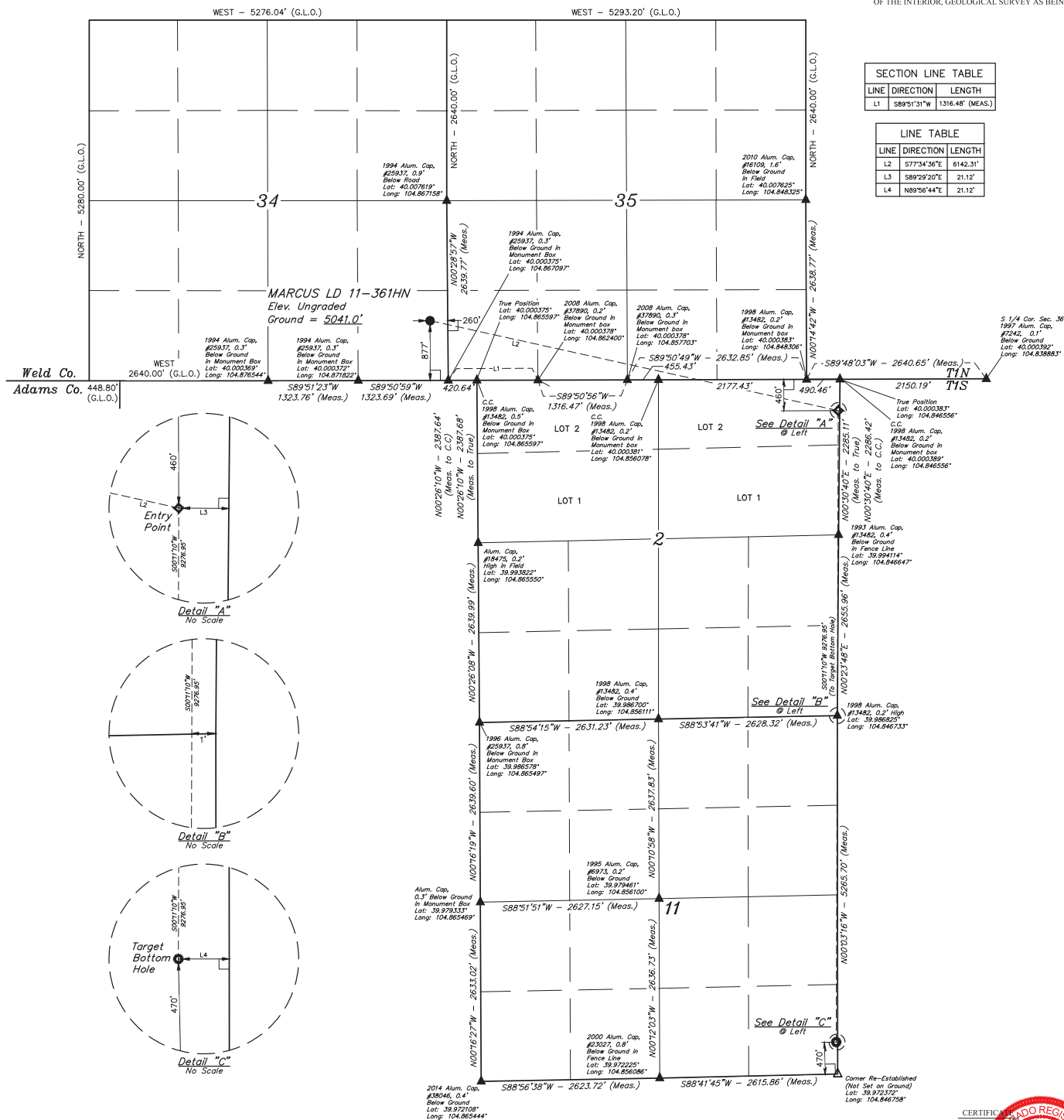


BASIS OF BEARINGS

BENCHMARK JR 53 5026 LOCATED IN THE SW 1/4 SE 1/4
OF SECTION 18, T1N, R68W, 6th P.M., TAKEN FROM 1988
PUBLISHED DATUM BY THE UNITED STATES DEPARTMENT
OF THE INTERIOR, GEOLOGICAL SURVEY AS BEING 5028 FEET.

SECTION LINE TABLE		
LINE	DIRECTION	LENGTH
L1	S89°51'31"W	1316.48' (MEAS

LINE TABLE		
LINE	DIRECTION	LENGTH
L2	S77°34'36"E	6142.31'
L3	S89°29'20"E	21.12'
L4	N89°56'44"E	21.12'



THIS IS TO CERTIFY THAT THE ABOVE DESCRIBED PARCELS ARE THE
NOTES OF ACTUAL SURVEYS MADE BY ME UNDER MY SPECIAL COMMISSION
AND THAT THE SAME ARE TRUE AND CORRECT TO THE BEST OF MY
KNOWLEDGE AND BELIEF:

782885

REGISTERED LAND SURVEYOR
REGISTERED UNDER NO. 28285
STATE OF OHIO

REV: 3 04-19-16 C.C. (NAME, EP & BHL CHANGE)

GREAT WESTERN OPERATING COMPANY

MARCUS LD 11-361HN
SE 1/4 SE 1/4, SECTION 34, T1N, R67W, 6th P.M.
WELD COUNTY, COLORADO

 **UELTS, LLC**
Corporate Office * 85 South 200 East
Vernal, UT 84078 * (435) 789-1017

PDOP = 1.2



UELS, LLC
Corporate Office * 85 South 200 East
Vernal, UT 84078 * (435) 789-1017

ENGINEERING & LAND SURVEYING	
SURVEYED BY: JARED CHRISTOPHER, J.C.	DATE: 11-20-14
DRAWN BY: J.W.	DATE DRAWN: 12-01-14

WELL LOCATION PLAT

NAD 83 (TARGET BOTTOM HOLE)	NAD 83 (ENTRY POINT)	NAD 83 (SURFACE LOCATION)
LATITUDE = 39°38'25.18" (39.973661)	LATITUDE = 39°59'56.84" (39.999122)	LATITUDE = 40°00'10.02" (40.002783)
LONGITUDE = 104°50'48.59" (104.846831)	LONGITUDE = 104°50'47.68" (104.846578)	LONGITUDE = 104°52'04.97" (104.868047)
NAD 27 (TARGET BOTTOM HOLE)	NAD 27 (ENTRY POINT)	NAD 27 (SURFACE LOCATION)
LATITUDE = 39°38'25.24" (39.973678)	LATITUDE = 39°59'56.90" (39.999139)	LATITUDE = 40°00'10.08" (40.002800)
LONGITUDE = 104°50'46.69" (104.846303)	LONGITUDE = 104°50'45.78" (104.846050)	LONGITUDE = 104°52'03.06" (104.867517)