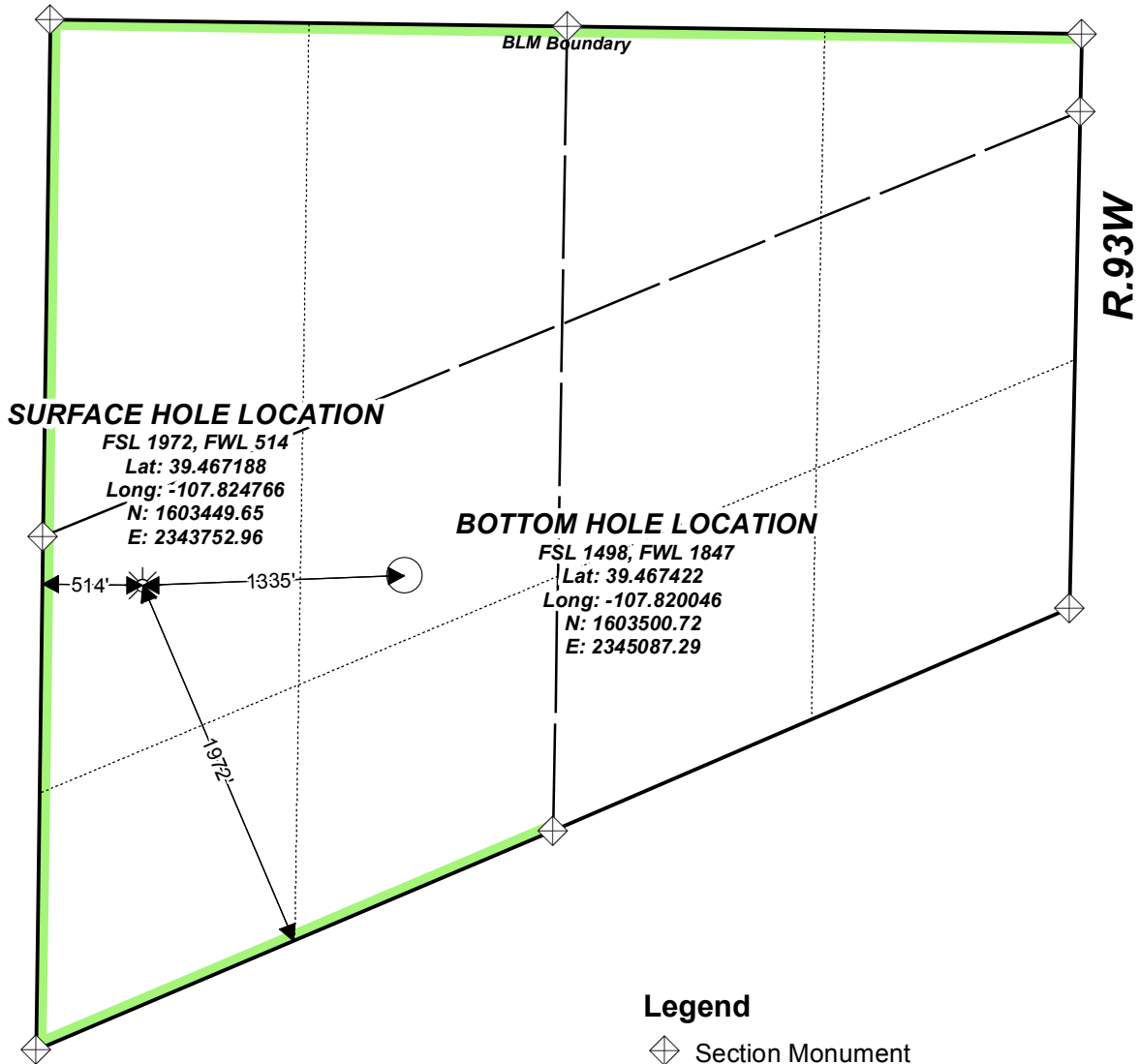


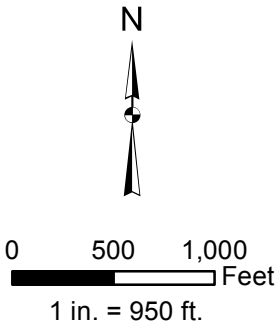
Federal RU 23-6

T.7S.



Legend

- ◆ Section Monument
- ☀ Surface Hole Location
- Bottom Hole Location



Well Location Plat

TEP Rocky Mountain LLC

NW1/4 SW1/4, SECTION 6,
T.7S., R.93W, of the 6th. P.M.
GARFIELD COUNTY, COLORADO

Map Date: 9/6/2016

Scale: 1" = 950'

Page 1 of 1

