

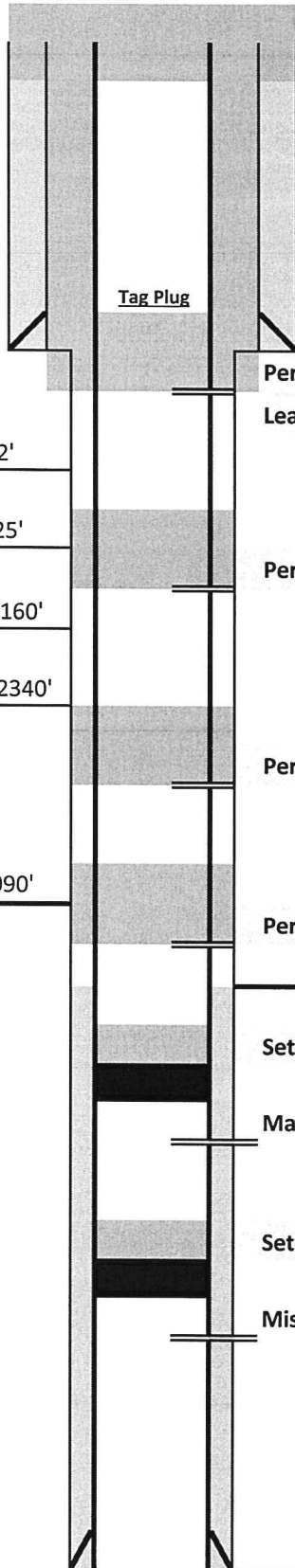


DRILLING COMPANY, INC.
WICHITA, KANSAS

Current Wellbore Diagram

15 sk. plug at surface - cut off 4' below ground level & weld cap.

Date:	3/21/2016
Well Name:	Pelton Heirs "A" #1
Location:	1980' FNL & 1980' FWL SE/4 NW/4 26-13S-44W
County:	Cheyenne
State:	Colorado
API:	05-017-06397
GL:	4190'
KB:	4199'
Spud Date:	10/13/1983



13 3/8" surface csg set @ 352'
 Cemented to surface w/350

Perf @ 402'. Squeeze w/100 sks.
 Leave 100' in casing - tag plug.

Perf 2100' & pump 40 sks. leave 100' in casing.

Perf 2450' & pump 40 sks. leave 100' in casing.

Perf 4150' & pump 40 sks. leave 100' in casing.

TOC @ 4506' (CBL)

Set CIBP @ 4750' over Marmaton perfs w/2 sks. cmt on top.

Marmaton Perfs @ 4765' - 4768' (12 holes)

Set CIBP @ 5250' over Mississippiian perfs w/2 sks. cmt on top

Mississippiian Perfs @ 5274' - 5355' (60 holes)

5 1/2" production csg set @ 5569'
 Cemented w/150 sx

Top Dakota @ 1872'

Base Dakota @ 2025'

Top Cheyenne @ 2160'

Base Cheyenne @ 2340'

Top Shawnee @ 4090'

PBTD = 5430'

RTD = 5574'