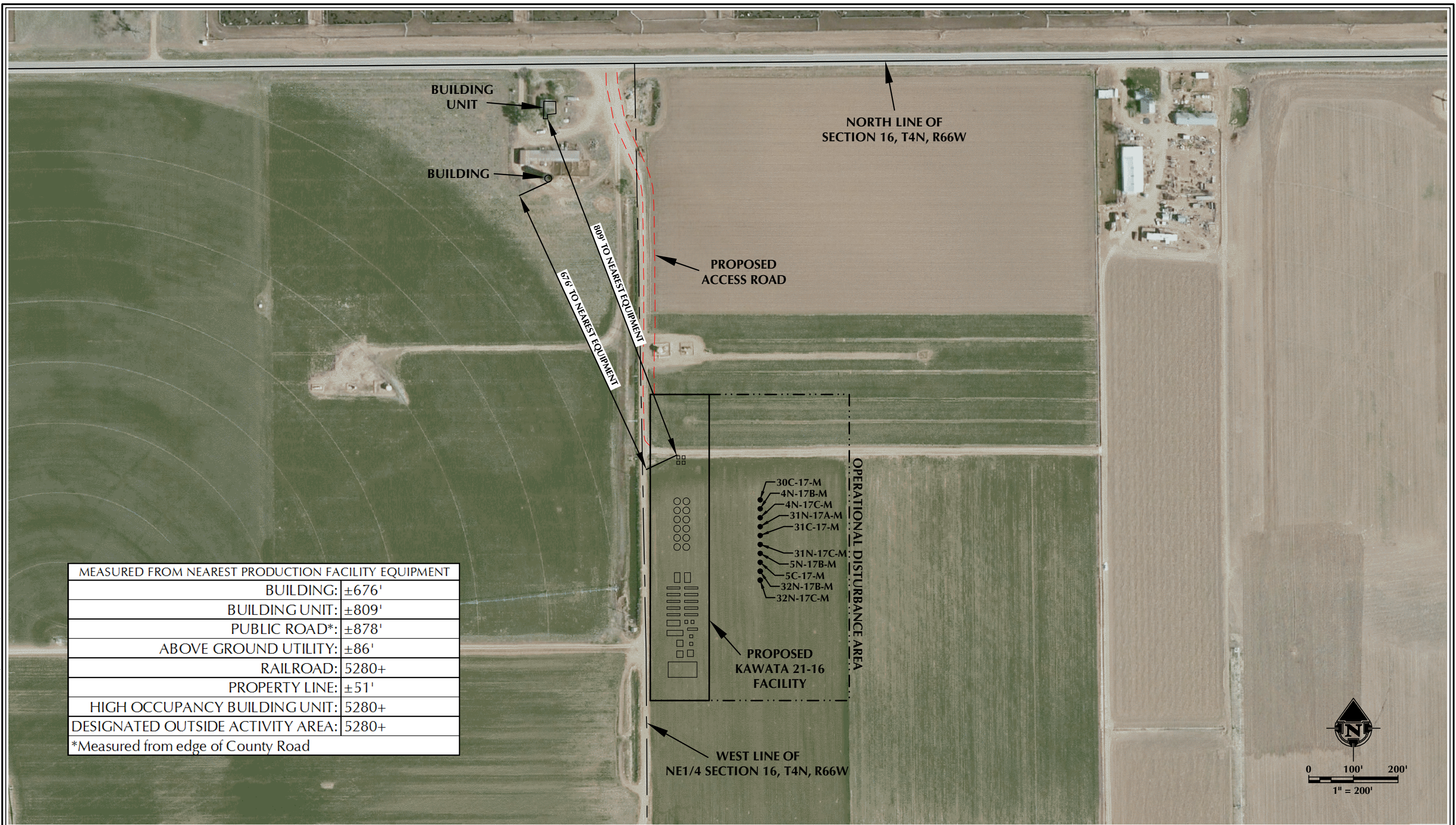


K:\SYNERGY RESOURCES\2016_05_KAWATA_FARM\5_T4N_R66W_SEC_16\DWG\KAWATA_SEC_16_T4N_R66W.dwg, 8/2/2016, 10:23:21 PM, jbk



| MEASURED FROM NEAREST PRODUCTION FACILITY EQUIPMENT | |
|---|-------|
| BUILDING: | ±676' |
| BUILDING UNIT: | ±809' |
| PUBLIC ROAD*: | ±878' |
| ABOVE GROUND UTILITY: | ±86' |
| RAILROAD: | 5280+ |
| PROPERTY LINE: | ±51' |
| HIGH OCCUPANCY BUILDING UNIT: | 5280+ |
| DESIGNATED OUTSIDE ACTIVITY AREA: | 5280+ |
| *Measured from edge of County Road | |

NOTES:
1. EQUIPMENT PLACEMENT IS APPROXIMATE AND SUBJECT TO MINOR MODIFICATION DUE TO SPECIFIC CIRCUMSTANCES.

DATA SOURCES:
- AERIAL COURTESY OF ESRI, INC.
- WATER WELLS COURTESY OF COLORADO DIVISION OF WATER RESOURCES



609
CONSULTING, LLC

LOVELAND OFFICE
1635 Foxtrail Drive, Suite 204
Loveland, Colorado 80538
Phone 970-776-4331

SHERIDAN OFFICE
1095 Saberton Avenue
Sheridan, Wyoming 82801
Phone 307-674-0609



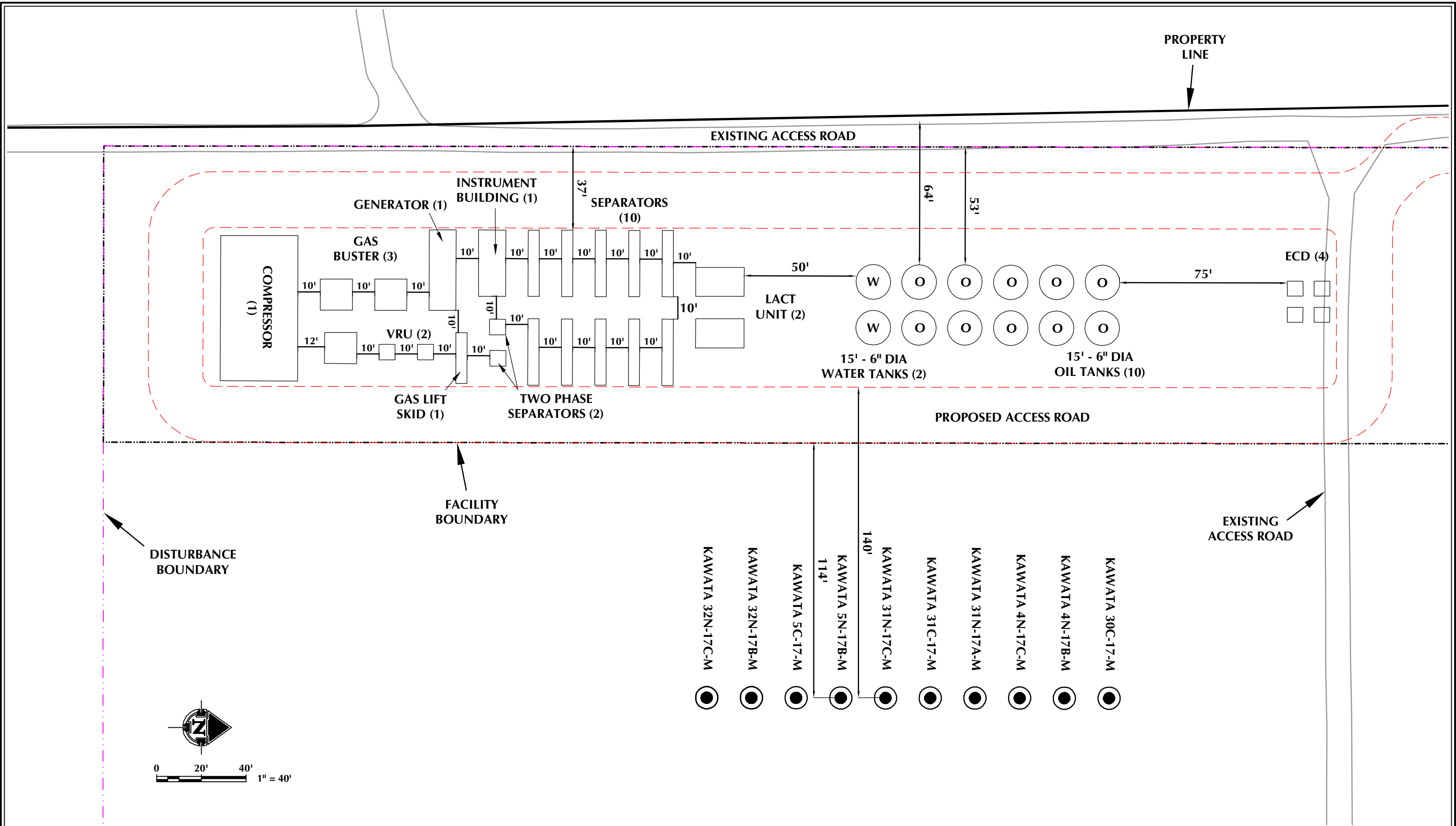
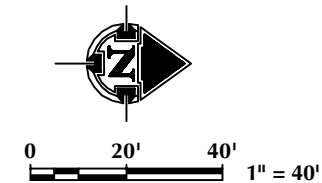
SYNERGY
RESOURCES CORPORATION

1625 Broadway, Suite 300
Denver, Colorado 80202

SCALE: 1" = 200'
DATE SURVEYED: 6/3/16
DATE: 6/29/16
DRAFTER: SRS
REVISED: 8/3/16

FACILITY LAYOUT AERIAL (A)
KAWATA 21-16
LOCATED IN SECTION 16, T4N, R66W, 6TH P.M.
WELD COUNTY, COLORADO

K:\SYNERGY RESOURCES\2016_05_KAWATA_FARMS_T4N_R66W_SEC_16.DWG\KAWATA_SEC_16_T4N_R66W.dwg, 8/2/2016 10:22:31 PM, jhe



NOTES:
1. EQUIPMENT PLACEMENT IS APPROXIMATE AND SUBJECT TO MINOR MODIFICATION DUE TO SPECIFIC CIRCUMSTANCES.

DATA SOURCES:
- AERIAL COURTESY OF ESRI, INC.
- WATER WELLS COURTESY OF COLORADO DIVISION OF WATER RESOURCES

609
CONSULTING, LLC

LOVELAND OFFICE
1635 Foxtrail Drive, Suite 204
Loveland, Colorado 80538
Phone 970-776-4331

SHERIDAN OFFICE
1095 Saberton Avenue
Sheridan, Wyoming 82801
Phone 307-674-0609

SYNERGY
RESOURCES CORPORATION

1625 Broadway, Suite 300
Denver, Colorado 80202

| | |
|----------------|----------|
| SCALE: | 1" = 40' |
| DATE SURVEYED: | 6/3/16 |
| DATE: | 6/23/16 |
| DRAFTER: | JFE |
| REVISED: | 8/3/16 |

FACILITY LAYOUT (B)
KAWATA 21-16
LOCATED IN SECTION 16, T4N, R66W, 6TH P.M.
WELD COUNTY, COLORADO