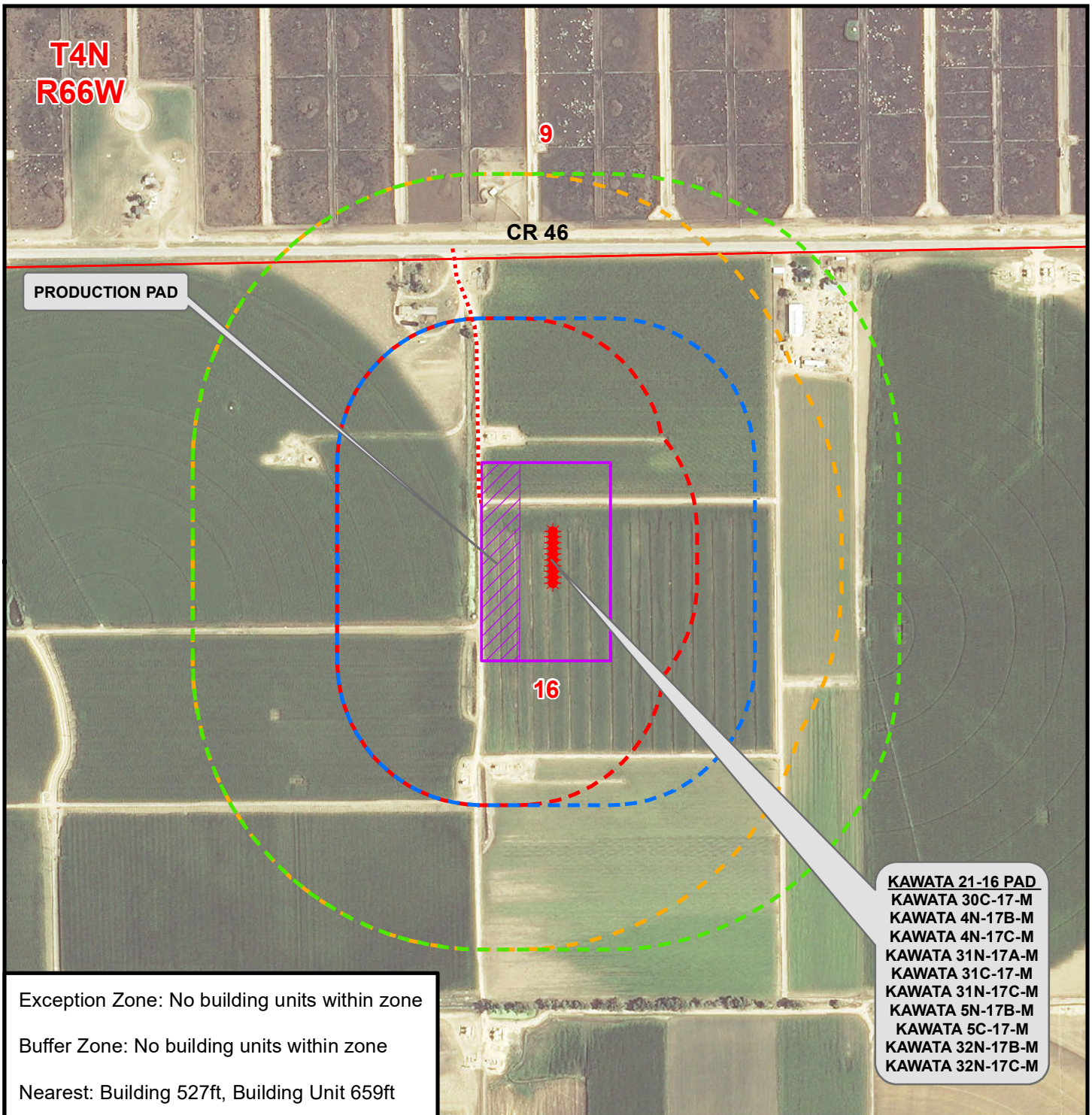


K:\SYNERGY RESOURCES\2016_45_KAWATA_FARMS_T4N_R66W_SEC_16\GIS\Maps_ABC\Kawata 21-16\Kawata 21-16 NZ.mxd 6/30/2016 9:49:18 AM



Legend

* All distances measured from proposed wells or edge of facility disturbance.

- Well - Fee - Proposed
- Disturbance Area
- 500ft Exception Zone
- 500ft OGLA ZONE
- Proposed Access Road
- Production Facility
- 1,000ft Buffer Zone
- 1,000ft NICO ZONE

PAD - KAWATA 21-16

NOTIFICATION ZONE MAP
KAWATA 30C-17-M, KAWATA 4N-17B-M,
KAWATA 4N-17C-M, KAWATA 31N-17A-M,
KAWATA 31C-17-M, KAWATA 31N-17C-M,
KAWATA 5N-17B-M, KAWATA 5C-17-M,
KAWATA 32N-17B-M & KAWATA 32N-17C-M
LOCATED IN SECTION 16, T4N, R66W, 6th P.M.
WELD COUNTY, COLORADO



1625 Broadway, Suite 300
Denver, Colorado 80202



CONSULTING, LLC

SHERIDAN OFFICE 1095 Saberton Avenue
Sheridan, Wyoming 82801
Phone 307-674-0609

LOVELAND OFFICE 1635 Foxtail Drive, Suite 204
Loveland, Colorado 80538
Phone 970-776-4331

SCALE: 1" = 500ft

DRAWN: DP

REVISED:

NAD83 CO-Nft

DATE: 30 Jun 2016

DATE: