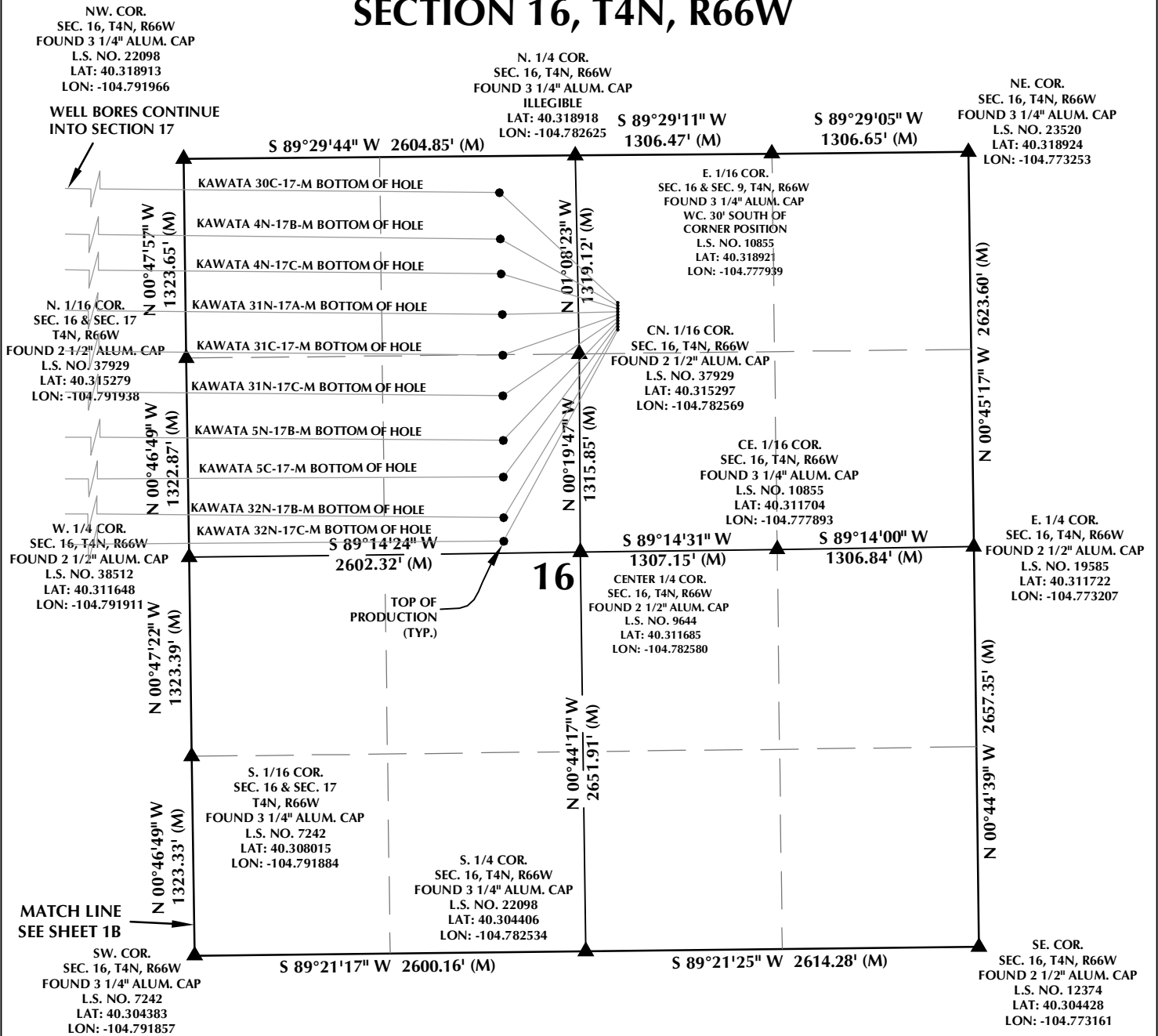


SECTION 16, T4N, R66W



WELL PAD - KAWATA 21-16

MULTI WELL PLAN
KAWATA 30C-17-M, KAWATA 4N-17B-M,
KAWATA 4N-17C-M, KAWATA 31N-17A-M,
KAWATA 31C-17-M, KAWATA 31N-17C-M,
KAWATA 5N-17B-M, KAWATA 5C-17-M,
KAWATA 32N-17B-M & KAWATA 32N-17C-M
LOCATED IN SECTIONS 16 & 17
T4N, R66W, 6TH P.M.
WELD COUNTY, COLORADO

SYNERGY
RESOURCES CORPORATION
1625 Broadway, Suite 300
Denver, Colorado 80202



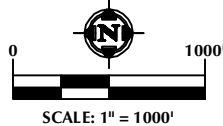
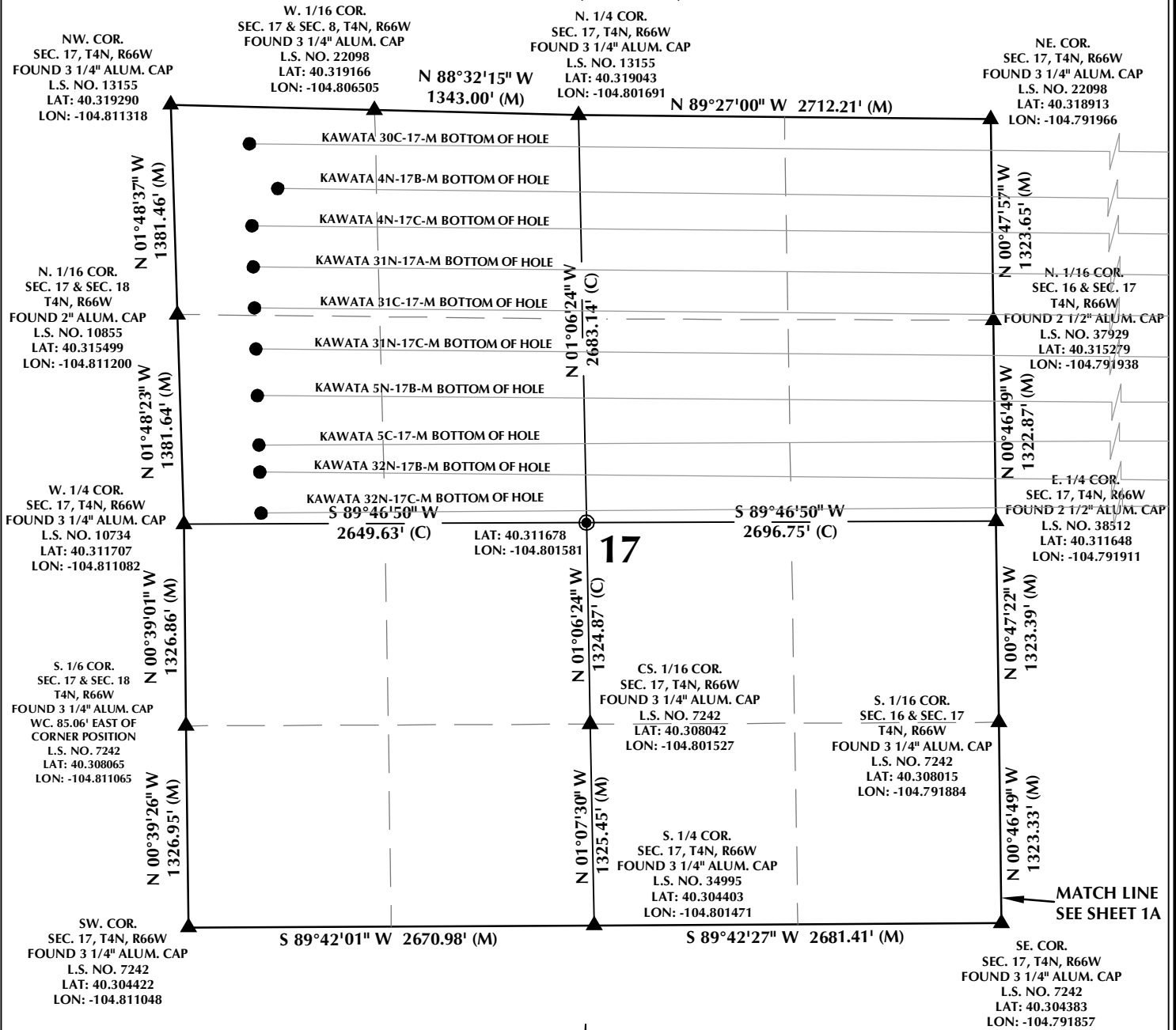
CONSULTING, LLC

SHERIDAN OFFICE
1095 Saberton Avenue
Sheridan, Wyoming 82801
Phone 307-674-0609

LOVELAND OFFICE
1635 Foxtrail Drive, Suite 204
Loveland, Colorado 80538
Phone 970-776-4331

DRAFTED BY:	LMO	CHECKED BY:	JRS	SHEET NO:
DATE DRAFTED:	6/29/16	DATE SURVEYED:	6/3/16	1A
REVISED:	7/18/16	FILE NAME:	16-45	1A OF 3

SECTION 17, T4N, R66W



NOTES:

- ▲ INDICATES SECTION CORNER
- INDICATES CALCULATED CORNER
- BASIS OF BEARING DERIVED FROM COLORADO COORDINATE SYSTEM OF 1983 NORTH ZONE.
- ALL MEASURED DISTANCES ARE GRID. COMBINED SCALE FACTOR: .99973444 CALCULATED FROM THE N. 1/4 CORNER OF SECTION 16, T4N, R66W
- WELL FOOTAGES ARE MEASURED AT RIGHT ANGLES TO THE SECTION LINES.

WELL PAD - KAWATA 21-16

MULTI WELL PLAN
KAWATA 30C-17-M, KAWATA 4N-17B-M,
KAWATA 4N-17C-M, KAWATA 31N-17A-M,
KAWATA 31C-17-M, KAWATA 31N-17C-M,
KAWATA 5N-17B-M, KAWATA 5C-17-M,
KAWATA 32N-17B-M & KAWATA 32N-17C-M
LOCATED IN SECTIONS 16 & 17
T4N, R66W, 6TH P.M.
WELD COUNTY, COLORADO

SYNERGY
RESOURCES CORPORATION
1625 Broadway, Suite 300
Denver, Colorado 80202



CONSULTING, LLC

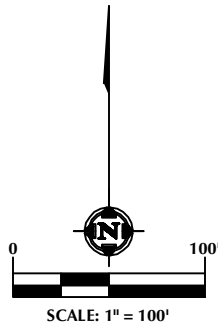
SHERIDAN OFFICE
1095 Saberton Avenue
Sheridan, Wyoming 82801
Phone 307-674-0609

LOVELAND OFFICE
1635 Foxtrail Drive, Suite 204
Loveland, Colorado 80538
Phone 970-776-4331

DRAFTED BY:	LMO	CHECKED BY:	JRS	SHEET NO:
DATE DRAFTED:	6/29/16	DATE SURVEYED:	6/3/16	1B
REVISED:	7/18/16	FILE NAME:	16-45	1B OF 3

KAWATA 21-16

KAWATA 30C-17-M ●
 KAWATA 4N-17B-M ● 20'
 KAWATA 4N-17C-M ● 20'
 KAWATA 31N-17A-M ● 20'
 KAWATA 31C-17-M ● 20'
 KAWATA 31N-17C-M ● 20'
 KAWATA 5N-17B-M ● 20'
 KAWATA 5C-17-M ● 20'
 KAWATA 32N-17B-M ● 20'
 KAWATA 32N-17C-M ● 20'




NOTES:

1. ▲ INDICATES SECTION CORNER
2. ● INDICATES CALCULATED CORNER
3. BASIS OF BEARING DERIVED FROM COLORADO COORDINATE SYSTEM OF 1983 NORTH ZONE.
4. ALL MEASURED DISTANCES ARE GRID.
COMBINED SCALE FACTOR: .99973444 CALCULATED FROM THE N. 1/4 CORNER OF SECTION 16, T4N, R66W
5. WELL FOOTAGES ARE MEASURED AT RIGHT ANGLES TO THE SECTION LINES.

WELL PAD - KAWATA 21-16

MULTI WELL PLAN
 KAWATA 30C-17-M, KAWATA 4N-17B-M,
 KAWATA 4N-17C-M, KAWATA 31N-17A-M,
 KAWATA 31C-17-M, KAWATA 31N-17C-M,
 KAWATA 5N-17B-M, KAWATA 5C-17-M,
 KAWATA 32N-17B-M & KAWATA 32N-17C-M
 LOCATED IN SECTIONS 16 & 17
 T4N, R66W, 6TH P.M.
 WELD COUNTY, COLORADO

 **SYNERGY**
 RESOURCES CORPORATION
 1625 Broadway, Suite 300
 Denver, Colorado 80202



CONSULTING, LLC

SHERIDAN OFFICE
 1095 Saberton Avenue
 Sheridan, Wyoming 82801
 Phone 307-674-0609

LOVELAND OFFICE
 1635 Foxtrail Drive, Suite 204
 Loveland, Colorado 80538
 Phone 970-776-4331

DRAFTED BY:	LMO	CHECKED BY:	JRS	SHEET NO:
DATE DRAFTED:	6/29/16	DATE SURVEYED:	6/3/16	2
REVISED:		FILE NAME:	16-45	2 OF 3

KAWATA 21-16

WELL NOTES:

KAWATA 30C-17M			
SURFACE:	TOP OF PRODUCTION:	BOTTOM HOLE:	FORMATION:
981' FNL & 2344' FEL	242' FNL & 2096' FWL	242' FNL & 510' FWL	CODELL
LATITUDE= 40.316227°	LATITUDE= 40.318253°	LATITUDE= 40.318578°	
LONGITUDE= -104.781643°	LONGITUDE= -104.784443°	LONGITUDE= -104.809466°	

KAWATA 4N-17B-M			
SURFACE:	TOP OF PRODUCTION:	BOTTOM HOLE:	FORMATION:
1001' FNL & 2345' FEL	551' FNL & 2098' FWL	533' FNL & 687' FWL	NIOBRARA
LATITUDE= 40.316172°	LATITUDE= 40.317405°	LATITUDE= 40.317762°	
LONGITUDE= -104.781644°	LONGITUDE= -104.784430°	LONGITUDE= -104.808806°	

KAWATA 4N-17C-M			
SURFACE:	TOP OF PRODUCTION:	BOTTOM HOLE:	FORMATION:
1021' FNL & 2345' FEL	782' FNL & 2099' FWL	782' FNL & 510' FWL	NIOBRARA
LATITUDE= 40.316117°	LATITUDE= 40.316771°	LATITUDE= 40.317093°	
LONGITUDE= -104.781644°	LONGITUDE= -104.784421°	LONGITUDE= -104.809420°	

KAWATA 31N-17A-M			
SURFACE:	TOP OF PRODUCTION:	BOTTOM HOLE:	FORMATION:
1041' FNL & 2345' FEL	1052' FNL & 2101' FWL	1052' FNL & 510' FWL	NIOBRARA
LATITUDE= 40.316062°	LATITUDE= 40.316029°	LATITUDE= 40.316351°	
LONGITUDE= -104.781645°	LONGITUDE= -104.784409°	LONGITUDE= -104.809397°	

KAWATA 31C-17-M			
SURFACE:	TOP OF PRODUCTION:	BOTTOM HOLE:	FORMATION:
1061' FNL & 2345' FEL	1322' FNL & 2103' FWL	1322' FNL & 510' FWL	CODELL
LATITUDE= 40.316007°	LATITUDE= 40.315288°	LATITUDE= 40.315609°	
LONGITUDE= -104.781645°	LONGITUDE= -104.784398°	LONGITUDE= -104.809374°	

KAWATA 31N-17C-M			
SURFACE:	TOP OF PRODUCTION:	BOTTOM HOLE:	FORMATION:
1081' FNL & 2346' FEL	1592' FNL & 2101' FWL	1592' FNL & 510' FWL	NIOBRARA
LATITUDE= 40.315953°	LATITUDE= 40.314547°	LATITUDE= 40.314867°	
LONGITUDE= -104.781646°	LONGITUDE= -104.784400°	LONGITUDE= -104.809351°	

KAWATA 5N-17B-M			
SURFACE:	TOP OF PRODUCTION:	BOTTOM HOLE:	FORMATION:
1101' FNL & 2346' FEL	1889' FNL & 2098' FWL	1899' FNL & 510' FWL	NIOBRARA
LATITUDE= 40.315898°	LATITUDE= 40.313732°	LATITUDE= 40.314023°	
LONGITUDE= -104.781646°	LONGITUDE= -104.784402°	LONGITUDE= -104.809325°	

KAWATA 5C-17-M			
SURFACE:	TOP OF PRODUCTION:	BOTTOM HOLE:	FORMATION:
1121' FNL & 2346' FEL	2132' FNL & 2096' FWL	2223' FNL & 510' FWL	CODELL
LATITUDE= 40.315843°	LATITUDE= 40.313065°	LATITUDE= 40.313132°	
LONGITUDE= -104.781647°	LONGITUDE= -104.784404°	LONGITUDE= -104.809297°	

KAWATA 32N-17B-M			
SURFACE:	TOP OF PRODUCTION:	BOTTOM HOLE:	FORMATION:
1141' FNL & 2346' FEL	2402' FNL & 2094' FWL	2402' FNL & 510' FWL	NIOBRARA
LATITUDE= 40.315788°	LATITUDE= 40.312324°	LATITUDE= 40.312640°	
LONGITUDE= -104.781648°	LONGITUDE= -104.784407°	LONGITUDE= -104.809282°	

KAWATA 32N-17C-M			
SURFACE:	TOP OF PRODUCTION:	BOTTOM HOLE:	FORMATION:
1161' FNL & 2347' FEL	2559' FNL & 2093' FWL	2672' FNL & 510' FWL	NIOBRARA
LATITUDE= 40.315733°	LATITUDE= 40.311893°	LATITUDE= 40.311898°	
LONGITUDE= -104.781648°	LONGITUDE= -104.784408°	LONGITUDE= -104.809259°	

WELL PAD - KAWATA 21-16

MULTI WELL PLAN
KAWATA 30C-17-M, KAWATA 4N-17B-M,
KAWATA 4N-17C-M, KAWATA 31N-17A-M,
KAWATA 31C-17-M, KAWATA 31N-17C-M,
KAWATA 5N-17B-M, KAWATA 5C-17-M,
KAWATA 32N-17B-M & KAWATA 32N-17C-M
LOCATED IN SECTIONS 16 & 17
T4N, R66W, 6TH P.M.
WELD COUNTY, COLORADO



1625 Broadway, Suite 300
Denver, Colorado 80202



CONSULTING, LLC

SHERIDAN OFFICE
1095 Saberton Avenue
Sheridan, Wyoming 82801
Phone 307-674-0609

LOVELAND OFFICE
1635 Foxtrail Drive, Suite 204
Loveland, Colorado 80538
Phone 970-776-4331

DRAFTED BY:	LMO	CHECKED BY:	JRS	SHEET NO: 3 3 OF 3
DATE DRAFTED:	6/29/16	DATE SURVEYED:	6/3/16	
REVISED:	7/18/16	FILE NAME:	16-45	