

1801 Broadway
Suite 500
Denver, Colorado 80202



Allison Schieber
Regulatory Technician
Tel: 303.398.0355
E-mail:
regulatorypermitting@gwogco.com

September 7, 2016

Colorado Oil and Gas Conservation Commission
1120 Lincoln Street, Suite 801
Denver, Colorado 80203
RE: **Proposed Wellbore Spacing Unit**
Kodak North FD 28-199HN
Niobrara New Drill

SENW Section 26
Township 6N, Range 67W, 6th P.M.
Weld County, Colorado

Dear Director:

Great Western Operating Company, LLC is planning to drill the above captioned well in accordance with the provisions of COGCC Rule 318A.e.

Great Western proposed wellbore spacing unit consists of:

- **S2NW4, N2SW4 Sec 26**
- **S2N2, N2S2 Sec 27**
- **SE4 NE4, NE4 SE4 Sec 28**
- **560 Acres**

The 30 day notification time period has passed and we have not received any objections to such well locations or proposed spacing unit, therefore Great Western hereby requests the Director to approve the above mentioned well. Great Western Operating Company, LLC respectfully requests that the COGCC review the enclosed map illustrating the proposed wellbore spacing unit.

Respectfully,

Allison Schieber

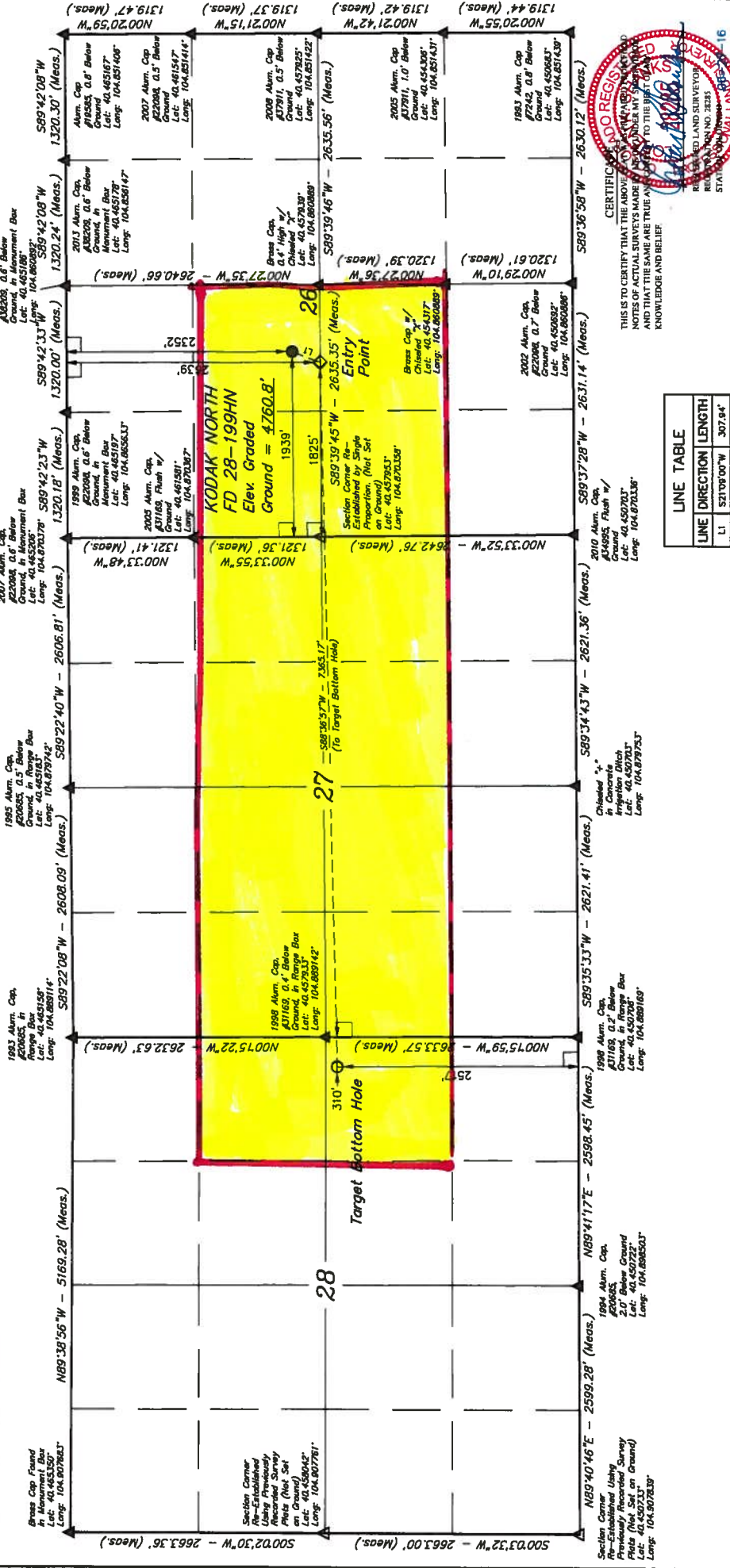
Allison Schieber
Regulatory Technician
Great Western Operating Company, LLC

BASIS OF BEARINGS
BASIS OF BEARINGS IS A G.P.S. OBSERVATION
BASIS OF ELEVATION

16N, R67W, 6th F.M.

BASIS OF ELEVATION

USGS COOPERATIVE BASE NETWORK CONTROL STATION,
DESIGNATION 'VERMILYEA', NCS DATA SHEET LISTS THE
NAVD 88 ELEVATION AS BEING 5026 FEET



LINE TABLE		
LINE	DIRECTION	LENGTH
L1	S21°09'00"W	307.94'

CERTIFICATE
THIS IS TO CERTIFY THAT THE ABOVE
NOTES OF ACTUAL SURVEYS MADE
AND THAT THE SAME ARE TRUE AND
KNOWLEDGE AND BELIEF.

REGISTERED AND SURVEYOR
RECEIVED AND NO. 32245
STATE OF NEW YORK
16

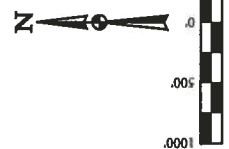
REV: 2 06-27-16 L.C.S. (NAME & BIIL CHANGE)



UINTEAH
UELS, LLC
 Corporate Office • 85 South 200 East
 Vernal, UT 84078 • (435) 789-1017

PDOP = 1.1

ENGINEERING & LOCATION SURVEYING		SURVEYED BY: DALLAS NIELSEN, C.M.		DATE: 10-21-13	
NAD 83 (TARGET BOTTOM HOLE)		NAD 83 (SURFACE LOCATION)		DRAWN BY: J.W.	
LATITUDE = 40°57'21.48" (40.957617)		LATITUDE = 40°57'31.45" (40.958736)		DATE DRAWN: 10-30-13	
LONGITUDE = 104°53'24.92" (104.890256)		LONGITUDE = 104°51'48.22" (104.861394)			
NAD 27 (TARGET BOTTOM HOLE)		NAD 27 (SURFACE LOCATION)		SCALE: 1" = 100'	
LATITUDE = 40°57'27.48" (40.957633)		LATITUDE = 40°57'31.52" (40.958750)		WELL LOCATION PLAT	
LONGITUDE = 104°53'23.02" (104.889728)		LONGITUDE = 104°51'46.32" (104.862867)			



LEGEND:

- └─ 90° SYMBOL
- = PROPOSED WELLHEAD.
- ◆ = ENTRY POINT.
- = TARGET BOTTOM HOLE.
- ▲ = SECTION CORNERS LOCATED. (NAD 83)
- △ = SECTION CORNERS RE-ESTABLISHED.
(last Set on Control 3) (NAD 83)