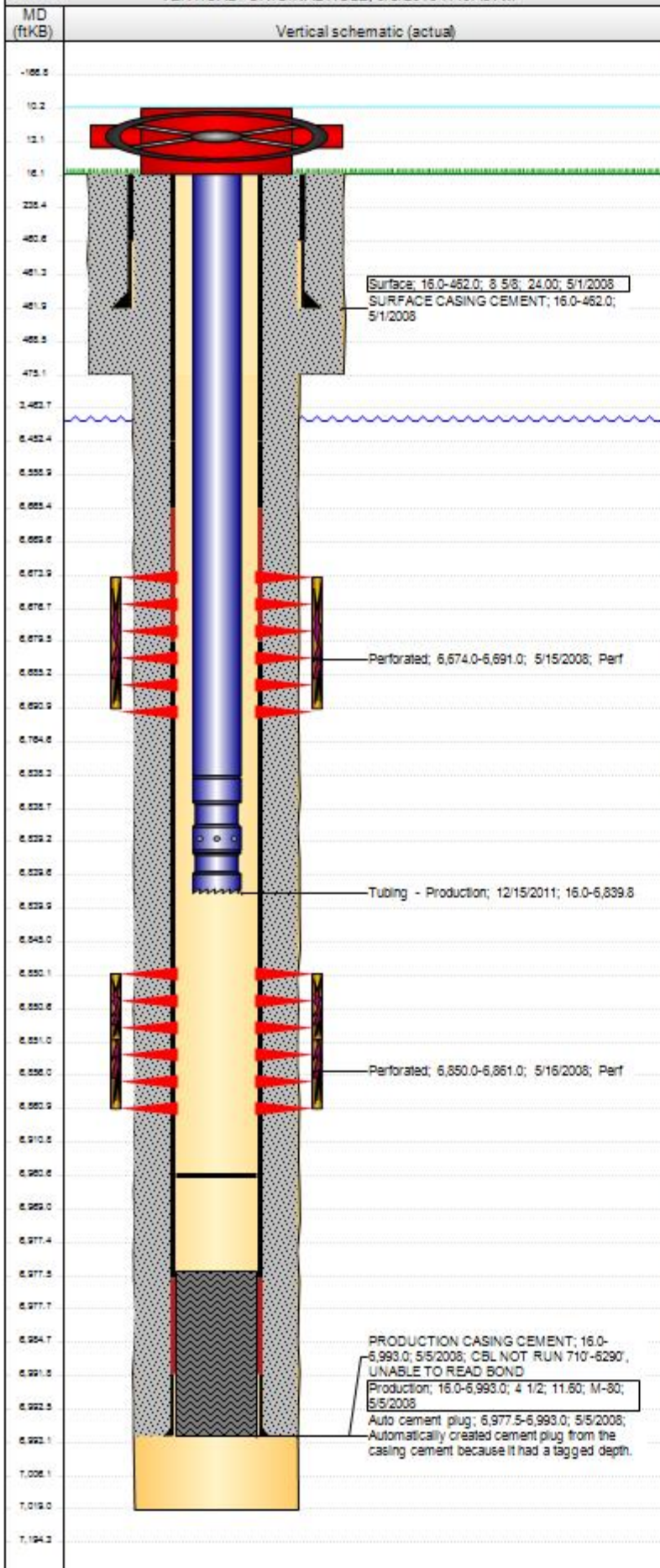


Wellbore Schematic Input Report

Well Name: MCKENNEY 14-14

VERTICAL - ORIGINAL HOLE, 9/8/2016 7:49:43 AM



Well Header

API	Business Unit	District	Well Config
05-123-26512	DJ BASIN	15	VERTICAL
Original KB Elevation (ft)	KB - GL / MSL (ftKB)	Spud Date	P & A Date
4,691	16.00	5/1/2008	

Comment

Directions To Well

59 & 70 S 4/10 W 1/10 INTO

Congressional Location

Quarter 3	Quarter 4	Section	Township	Township N/S Dir	Range	Range E/W Dir
SE	NE	14	6 N		64	W

Bottom Hole Location

North-South Distance (ft)	From N or S Line	East-West Distance (ft)	From E or W Line
---------------------------	------------------	-------------------------	------------------

Plug Back Total Depths

Date	Depth (ftKB)	Method	Com
5/6/2008	6,977.5	CASING TALLY	SHOE JOINT W/BAFFLE PLATE
5/22/2008	6,945.0	CASED HOLE LOG	DEPTH LOGGER
7/19/2008	6,960.0	TAG	C/O PLUG & CHASE TO BOTTOM
12/15/2011	6,960.7	TAG	CLEAN OUT

Wellbore Sections

Section Des	Size (in)	Act Top, MD (ftKB)	Act Btm, MD (ftKB)
SURFACE	12 1/4	16	475
PRODUCTION	7 7/8	475	7,019

Zone Statuses

Zone Name	Status Date	Status	Fluid Type	Job	Prod Method
CODELL	6/9/2008	PR		DRILLING/CO...	
CODELL	12/27/2011	PR		RE-FRAC, 11/1...	
NIOBRARA	6/9/2008	PR		DRILLING/CO...	

Casing Strings

Surface, 462.0ftKB

Casing Description	Run Date	OD (in)	WT/Len (lb/ft)	Grade	Top, MD (ft)	MD (ftKB)
Surface	5/1/2008	8 5/8	24.00		16.0	462.0

Production, 6,993.0ftKB

Casing Description	Run Date	OD (in)	WT/Len (lb/ft)	Grade	Top, MD (ft)	MD (ftKB)
Production	5/5/2008	4 1/2	11.60	M-80	16.0	6,993.0

Cement

Description	Top Depth (ftKB)	Bottom Depth (ftKB)
SURFACE CASING CEMENT	16.0	462.0
Description	Top Depth (ftKB)	Bottom Depth (ftKB)
PRODUCTION CASING CEMENT	16.0	6,993.0

Tubing Strings

Tubing Description	Run Date	String ...	ID (in)	WT (lb/ft)	Grade	Len (ft)	Set De ...
Tubing - Production	7/22/2008	2 3/8				6,819.00	
Tubing Description	Run Date	String ...	ID (in)	WT (lb/ft)	Grade	Len (ft)	Set De ...
Tubing - Frac string	11/19/2011	2 7/8	2,441	6.50	N-80	6,763.86	
Tubing Description	Run Date	String ...	ID (in)	WT (lb/ft)	Grade	Len (ft)	Set De ...
Tubing - Production	12/15/2011	2 3/8	1,995	4.70	J-55	6,823.75	

Tubing Components

Item Des	OD (in)	WT (lb/ft)	Grade	Jts	Len (ft)	Btm (ftKB)	Btm (TVD) (ftKB)
EUE 8rd Tubing	2 3/8	4.70	J-55	220	6,822.25	6,838.3	
Seating Nipple	2 3/8		N-80	1	1.10	6,839.4	
Notched collar	2 3/8		J-55	1	0.40	6,839.8	

Perforation Data

Zone	Brch/St g	Entered Shot Total	Top (ftKB)	Btm (ftKB)	Date
NIOBRARA, ORIGINAL HOLE		68	6,674.00	6,691.00	5/15/2008
CODELL, ORIGINAL HOLE		44	6,850.00	6,861.00	5/16/2008

Stimulations & Treatments

Date	Zone	Primary Job Type
5/16/2008	NIOBRARA, ORIGINAL HOLE	DRILLING/COMPLETION - ORIGINAL
Technical Result	Tech Result Details	Tech Result Note

Comment