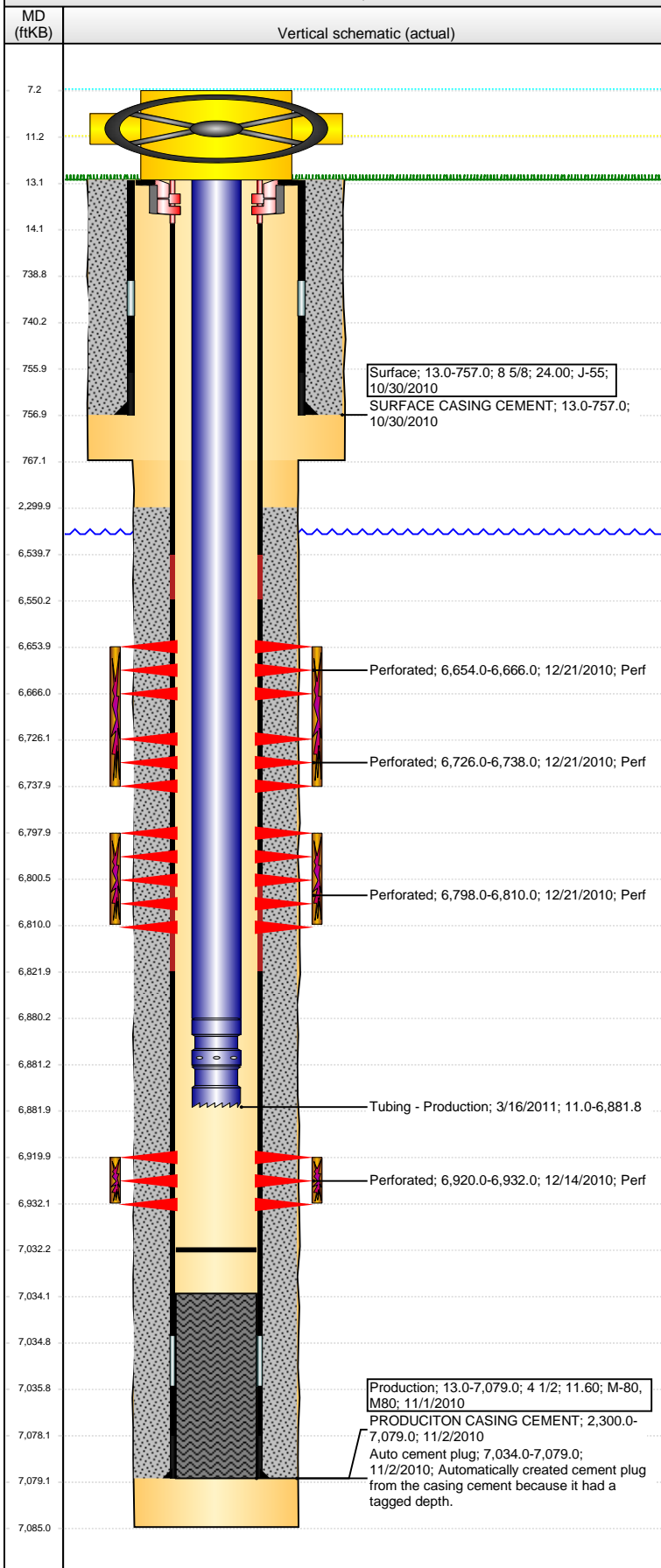


Wellbore Schematic Input Report

Well Name: DINNEL C27-29D

DEVIATED - ORIGINAL HOLE, 8/31/2016 2:07:09 PM



Well Header

API 05-123-31948	Business Unit DJ BASIN	District 15	Well Config DEVIATED
Original KB Elevation (ft) 4,690	KB - GL / MSL (ftKB) 13.00	Spud Date 10/29/2010	P & A Date

Comment

SURFACE CSG DEPTH DISCREPANCY: ST COMP RPT AND SFC CEMENT RPT 761', DRL RPT AND FIELD ENTERED DEPTH 757', USED FIELD ENTERED DEPTH

Directions To Well

FROM CR 42 & CR 55. EAST 0.1 MILES, NORTH 0.1 MILES IN TO. SOUTH WELL HEAD.

Congressional Location

Quarter 3 SW	Quarter 4 SW	Section 22	Township 4 N	Twntshp N/S Dir 64 W	Range 64 W	Range E/W Dir
-----------------	-----------------	---------------	-----------------	-------------------------	---------------	---------------

Bottom Hole Location

North-South Distance (ft) 136.0	From N or S Line FSL	East-West Distance (ft) 1,340.0	From E or W Line FWL
------------------------------------	-------------------------	------------------------------------	-------------------------

Plug Back Total Depths

Date	Depth (ftKB)	Method	Com
11/2/2010	7,034.0	CASING TALLY	FLOAT COLLAR
12/14/2010	7,017.0	CASED HOLE LOG	DEPTH LOGGER
3/16/2011	7,032.0	TUBING TALLY	100' OF RAT HOLE

Wellbore Sections

Section Des	Size (in)	Act Top, MD (ftKB)	Act Btm, MD (ftKB)
SURFACE	12 1/4	13	767
PRODUCTION	7 7/8	767	7,085

Zone Statuses

Zone Name	Status Date	Status	Fluid Type	Job	Prod Method
CODELL	1/19/2011	PR		DRILLING/CO...	
NIOBRARA	1/19/2011	PR		DRILLING/CO...	

Casing Strings

Surface, 757.0ftKB

Casing Description	Run Date	OD (in)	Wt/Len (l...)	Grade	Top, MD (ft...)	MD (ftKB)
Surface	10/30/2010	8 5/8	24.00	J-55	13.0	757.0

Production, 7,079.0ftKB

Casing Description	Run Date	OD (in)	Wt/Len (l...)	Grade	Top, MD (ft...)	MD (ftKB)
Production	11/1/2010	4 1/2	11.60	M-80	13.0	7,079.0

Cement

Description	Top Depth (ftKB)	Bottom Depth (ftKB)
SURFACE CASING CEMENT	13.0	757.0
Description	Top Depth (ftKB)	Bottom Depth (ftKB)
PRODUCITON CASING CEMENT	2,300.0	7,079.0

Tubing Strings

Tubing Description	Run Date	String...	ID (in)	Wt (lb/ft)	Grade	Len (ft)	Set De...
Tubing - Production	3/16/2011	2 3/8	1.995	4.70	J-55	6,870.84	6,788.4

Tubing Components

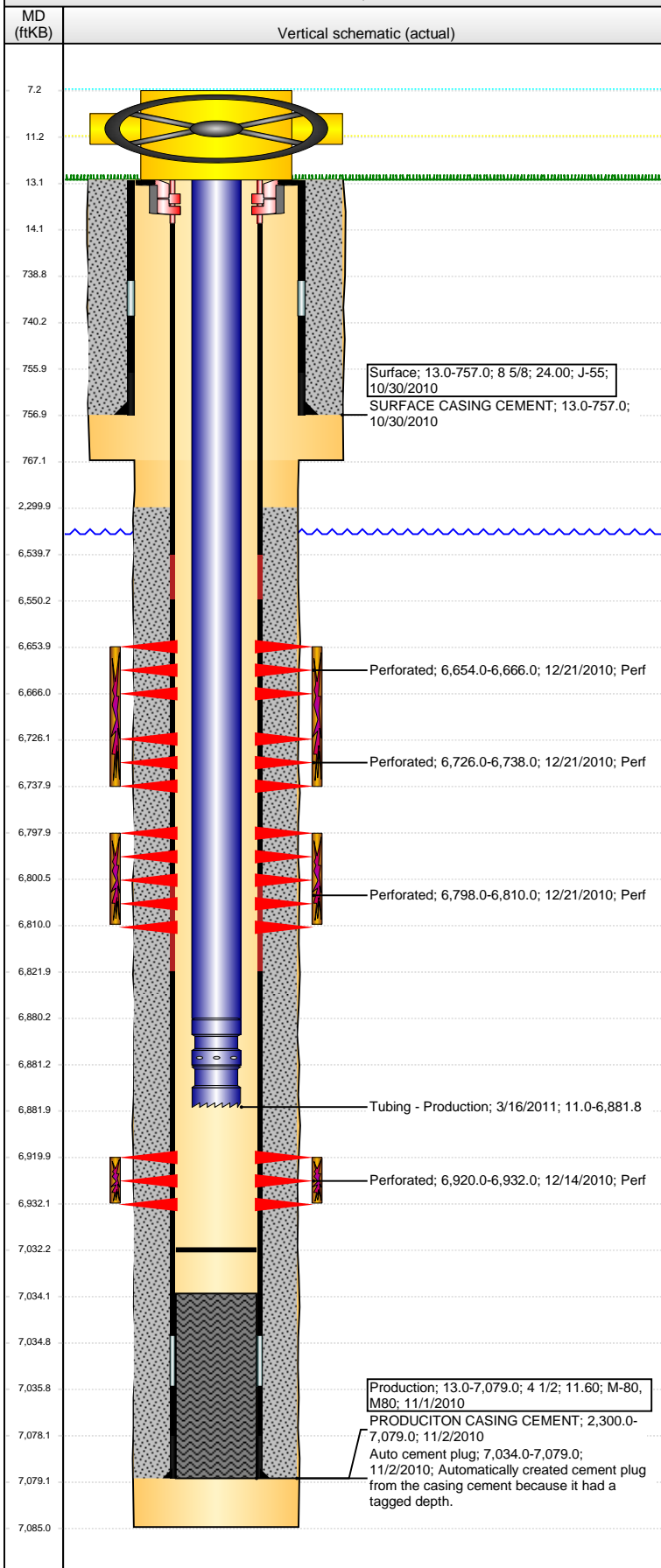
Item Des	OD (in)	Wt (lb/ft)	Grade	Jts	Len (ft)	Btm (ftKB)	Btm (TVD) (ftKB)
Tubing	2 3/8	4.70	J-55	221	6,869.19	6,880.2	
Pump Seating Nipple	2 3/8	4.70	J-55	1	1.10	6,881.3	6,787.9
Notched collar	2 3/8	4.70	J-55	1	0.55	6,881.8	6,788.4

Perforation Data

Zone	Bnch/St g	Entered Shot Total	Top (ftKB)	Btm (ftKB)	Date
NIOBRARA, ORIGINAL HOLE	A	24	6,654.00	6,666.00	12/21/2010
NIOBRARA, ORIGINAL HOLE	B	24	6,726.00	6,738.00	12/21/2010
NIOBRARA, ORIGINAL HOLE	C	24	6,798.00	6,810.00	12/21/2010
CODELL, ORIGINAL HOLE	1	48	6,920.00	6,932.00	12/14/2010

Well Name: DINNEL C27-29D

DEVIATED - ORIGINAL HOLE, 8/31/2016 2:07:12 PM



Stimulations & Treatments

Date	Zone	Primary Job Type
12/21/2010	CODELL, ORIGINAL HOLE	DRILLING/COMPLETION - ORIGINAL
Technical Result	Tech Result Details	Tech Result Note
Success	According to Plan	
Comment (CODELL): PRE-JOB ISDP 2913, 5 MIN 2351, INCREASED RATE TO 22 BPM. A PRODUCT CALLED "PREFERRED ROCK" IS A REPLACEMENT FOR THE NORMAL OTTAWA 20/40 SAND WE NORMALLY PUMP, ALTHOUGH THIS IS NOT A PREFERRED PRODUCT.		
Date	Zone	Primary Job Type
12/21/2010	NIOBRARA, ORIGINAL HOLE	DRILLING/COMPLETION - ORIGINAL
Technical Result	Tech Result Details	Tech Result Note
Success	According to Plan	
Comment (NIOBRARA C): JOB WENT WELL WITH NO ISSUES TO REPORT.		
Date	Zone	Primary Job Type
12/21/2010	NIOBRARA, ORIGINAL HOLE	DRILLING/COMPLETION - ORIGINAL
Technical Result	Tech Result Details	Tech Result Note
Success	According to Plan	
Comment (NIOBRARA AB): JOB WENT WELL WITH NO ISSUES TO REPORT.		

Other In Hole

Run Date	Des	OD (in)	Top (ftKB)	Btm (ftKB)

Logs

Date	Type	Top, MD (ftKB)	Btm, MD (ftKB)
11/1/2010	Caliper/Comp. Density/Neutron/GR/SP/ML	2,640.0	7,060.0
11/1/2010	DIL/GR/SP/Caliper	755.0	7,080.0
11/30/2010	CBL/CCL/GR	2,100.0	7,010.0