

HALLIBURTON

iCem[®] Service

SYNERGY OIL & GAS LP

For: Danny Showers

Date: Tuesday, March 08, 2016

SRC Vista 43-2N-C

Production

Job Date: Sunday, February 14, 2016

Sincerely,
Derek Trier

Legal Notice

Warning Disclaimer

Although the information contained in this report is based on sound engineering practices, the copyright owner(s) does (do) not accept any responsibility whatsoever, in negligence or otherwise, for any loss or damage arising from the possession or use of the report whether in terms of correctness or otherwise. The application, therefore, by the user of this report or any part thereof, is solely at the user's own risk.

Limitations of Liability

Except as expressly set forth herein, there are no representations or warranties by Halliburton, express or implied, including implied warranties of merchantability and/or fitness for a particular purpose. In no event will Halliburton or its suppliers be liable for consequential, incidental, special, punitive or exemplary damages (including, without limitation, loss of data, profits, use of hardware, or software). Customer accepts full responsibility for any investment made based on results from the Software. Any interpretations, analyses or modeling of any data, including, but not limited to Customer data, and any recommendation or decisions based upon such interpretations, analyses or modeling are opinions based upon inferences from measurements and empirical relationships and assumptions, which inferences and assumptions are not infallible, and with respect to which professional may differ. Accordingly, Halliburton cannot and does not warrant the accuracy, correctness or completeness of any such interpretation, recommendation, modeling or other products of the Software Product. As such, any interpretation, recommendation or modeling resulting from the Software for the purpose of any drilling, well treatment, production or financial decision will be at the sole risk of Customer. Under no circumstances will Halliburton or its suppliers be liable for any damages.

Table of Contents

1.0 Cementing Job Summary 4

 1.1 Executive Summary4

2.0 Real-Time Job Summary 7

 2.1 Job Event Log7

3.0 Attachments..... 9

 3.1 SYNERGY SRC VISTA 43-2N-C-Custom Results.png.....9

 3.2 SYNERGY SRC VISTA 43-2N-C-Custom Results (2).png10

1.0 Cementing Job Summary

1.1 Executive Summary

Halliburton appreciates the opportunity to perform the cementing services on the **SRC Vista 43-2N-C** cement **Production** casing job. A pre-job safety meeting was held before the job where details of the job were discussed, potential safety hazards were reviewed, and environmental compliance procedures were outlined.

Halliburton maintains a continuous quality improvement process and appreciates any comments or suggestions that you may have. Halliburton again thanks you for the opportunity to perform service work on this well. We hope to be your solutions provider for future projects.

Respectfully,

Halliburton [Ft. Lupton]

Job Times

	Date	Time	Time Zone
Called Out Time:	2/14/2016	0700	MTN
Arrived On Location At:		1300	
Job Started At:		1516	
Job Completed At:		1839	
Departed Location At:		2000	

HALLIBURTON

Cementing Job Summary

The Road to Excellence Starts with Safety

Sold To #: 359915		Ship To #: 3700827		Quote #:		Sales Order #: 0903113752				
Customer: SYNERGY RESOURCES CORPORATION				Customer Rep:						
Well Name: SRC VISTA		Well #: 43-2N-C		API/UWI #: 05-123-41056-00						
Field: WATTENBERG		City (SAP): BERTHOUD		County/Parish: WELD		State: COLORADO				
Legal Description: NW SW-2-4N-68W-2163FSL-254FWL										
Contractor: PRECISION DRLG				Rig/Platform Name/Num: PRECISION 462						
Job BOM: 7523										
Well Type: HORIZONTAL OIL										
Sales Person: HALAMERICA/HX38199				Srvc Supervisor: Joseph Fantasia						
Job										
Well Data										
Description	New / Used	Size in	ID in	Weight lbm/ft	Thread	Grade	Top MD ft	Bottom MD ft	Top TVD ft	Bottom TVD ft
Casing		9.625	8.921	36	LTC	J-55	0	1645	0	1642
Casing		5.5	4.892	17		P-110	0	11595		
Open Hole Section			8.5				1645	11615		
Fluid Data										
Stage/Plug #: 1										
Fluid #	Stage Type	Fluid Name	Qty	Qty UoM	Mixing Density lbm/gal	Yield ft ³ /sack	Mix Fluid Gal	Rate bbl/min	Total Mix Fluid Gal	
1	WATER	WATER SPACER W/ RED DYE	10	bbl	8.33			4		
Fluid #	Stage Type	Fluid Name	Qty	Qty UoM	Mixing Density lbm/gal	Yield ft ³ /sack	Mix Fluid Gal	Rate bbl/min	Total Mix Fluid Gal	
1	Tuned Spacer III	Tuned Spacer III	40	bbl	11.5	3.86		5		
145.18 lbm/bbl		BARITE, BULK (100003681)								
36.09 gal/bbl		FRESH WATER								
Fluid #	Stage Type	Fluid Name	Qty	Qty UoM	Mixing Density lbm/gal	Yield ft ³ /sack	Mix Fluid Gal	Rate bbl/min	Total Mix Fluid Gal	
2	ElastiCem Lead	ELASTICEM (TM) SYSTEM	1000	sack	13.2	1.57		8	7.53	
7.53 Gal		FRESH WATER								

HALLIBURTON

Cementing Job Summary

Fluid #	Stage Type	Fluid Name	Qty	Qty UoM	Mixing Density lbm/gal	Yield ft3/sack	Mix Fluid Gal	Rate bbl/min	Total Mix Fluid Gal
3	Tail EconoCem	ECONOCER (TM) SYSTEM	760	sack	13.5	1.65		8	7.86
0.35 %		HR-5, 50 LB SK (100005050)							
Fluid #	Stage Type	Fluid Name	Qty	Qty UoM	Mixing Density lbm/gal	Yield ft3/sack	Mix Fluid Gal	Rate bbl/min	Total Mix Fluid Gal
4	Displacement	DisplacementT		267	8.34			9	
0.50 gal/bbl		MICRO MATRIX CEMENT RETARDER, 5 GAL PAIL (100003781)							
Cement Left In Pipe		Amount	90 ft		Reason			Shoe Joint	
Comment APPROX 40 BBLS TUNED SPACER AND 20 BBLS CEMENT TO SURFACE.									

2.0 Real-Time Job Summary

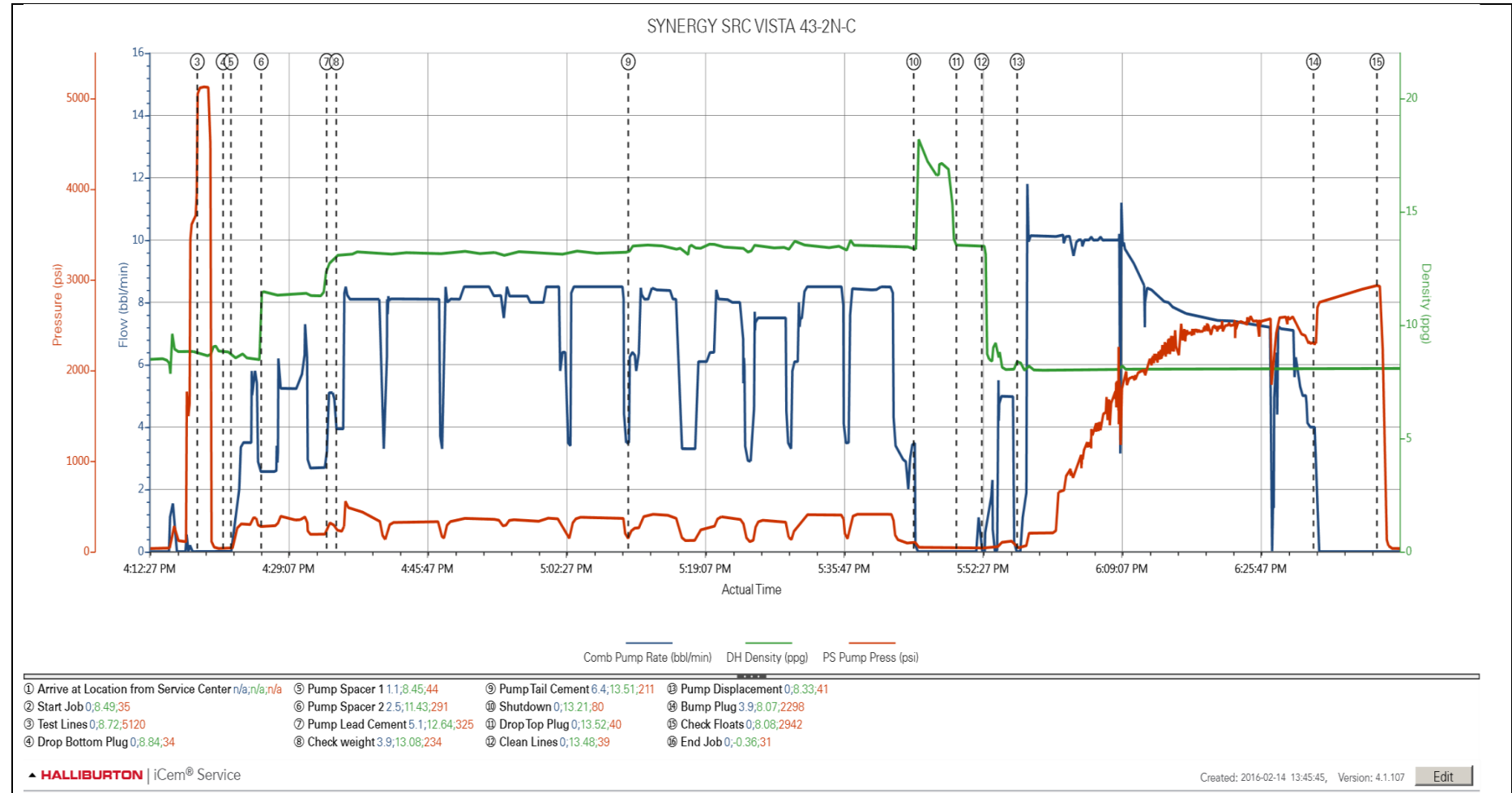
2.1 Job Event Log

Type	Seq. No.	Activity	Graph Label	Date	Time	Source	Comb Pump Rate (bbl/min)	DH Density (ppg)	PS Pump Press (psi)	Comments
Event	1	Arrive at Location from Service Center	Arrive at Location from Service Center	2/14/2016	13:00:00	USER				ARRIVE AT LOCATION. HELD SITE ASSESSMENT AND PRE RIG UP SAFETY MEETING PRIOR TO SPOTTING TRUCKS AND RIGGING UP EQUIPMENT. RIG CREW RUNNING CASING. WATER TEST PERFORMED. PH 7...CHLORIDES-0 TEMP 45 DEG F...
Event	2	Start Job	Start Job	2/14/2016	15:16:37	COM5				HELD PRE JOB SAFETY MEETING WITH ALL PRESENT PERSONNEL PRIOR TO JOB. RIG CIRCULATED 8 BBL/MIN @ 460 PSI FOR APPROX 1.5 HRS.
Event	3	Test Lines	Test Lines	2/14/2016	16:18:24	COM5	0.00	8.72	5120.00	PRESSURE TEST LINES TO 4900 PSI.
Event	4	Drop Bottom Plug	Drop Bottom Plug	2/14/2016	16:21:30	COM5	0.00	8.84	34.00	3RD PARTY BOTTOM PLUG DROPPED BEFORE SPACER.
Event	5	Pump Spacer 1	Pump Spacer 1	2/14/2016	16:22:27	COM5	1.10	8.45	44.00	PUMP 10 BBL WATER WITH 2 LBS RED DYE ADDED.
Event	6	Pump Spacer 2	Pump Spacer 2	2/14/2016	16:26:05	COM5	2.50	11.43	291.00	PUMP 40 BBL TUNED SPACER MIXED AT 11.5 PPG. DENSITY VERIFIED BY SCALE.
Event	7	Pump Lead Cement	Pump Lead Cement	2/14/2016	16:33:55	COM5	5.10	12.64	325.00	PUMP 279 BBL (1000 SKS) ELASTICEM MIXED AT 13.2 PPG. DENSITY VERIFIED BY SCALE.
Event	8	Check Weight	Check weight	2/14/2016	16:35:05	COM5	3.90	13.08	234.00	DENSITY VERIFIED BY SCALE.
Event	9	Pump Tail Cement	Pump Tail Cement	2/14/2016	17:10:08	COM5	6.40	13.51	211.00	PUMP 223 BBL (760 SKS) ECONOCEM MIXED AT 13.5 PPG. DENSITY VERIFIED BY SCALE.
Event	10	Shutdown	Shutdown	2/14/2016	17:44:23	COM5	0.00	13.21	80.00	
Event	11	Drop Top Plug	Drop Top Plug	2/14/2016	17:49:30	USER	0.00	13.52	40.00	3RD PARTY TOP PLUG DROPPED DURING SHUTDOWN.
Event	12	Clean Lines	Clean Lines	2/14/2016	17:52:33	USER	0.00	13.48	39.00	CLEAN PUMPS AND LINES TO PIT.
Event	13	Pump Displacement	Pump Displacement	2/14/2016	17:56:48	COM5	0.00	8.33	41.00	DISPLACE USING 267 BBL WATER. 10 GALLONS MMCR ADDED IN FIRST 40 BBL. 20 GAL CALYWEB AND RIG SUPPLIED BIOCIDES ADDED THROUGHOUT. APPROX 40 BBL SPACER AND 20 BBL CEMENT TO SURFACE.

Event	14	Bump Plug	Bump Plug	2/14/2016	18:32:21	COM5	3.90	8.07	2298.00	PLUG LANDED AT 2298 PSI. PRESSURE BROUGHT TO 2800 PSI AND HELD 5 MIN.
Event	15	Check Floats	Check Floats	2/14/2016	18:39:58	USER	0.00	8.08	2942.00	FLOATS HELD. 2.5 BBLS BACK TO TRUCK.
Event	16	End Job	End Job	2/14/2016	19:00:23	COM5				HELD PRE RIG DOWN SAFETY MEETING PRIOR TO RIGGING DOWN EQUIPMENT.

3.0 Attachments

3.1 SYNERGY SRC VISTA 43-2N-C-Custom Results.png



3.2 SYNERGY SRC VISTA 43-2N-C-Custom Results (2).png

