



## Survey Certification

7327 West Barton Road  
Casper, WY 82604  
(307)-472-6621 Fax (307) 472-5439

Operator	Synergy Resources Corp.
Well Name & No.	SRC Vista 43-2N-C
API #	05-123-41054 <a href="#">05-123-41056 Corrected DS</a>
County & State	Weld County, CO
SDI Job No.	343905
Rig	PD 462
Survey Date	13-Feb-2016

I, Robert Scott, having personal knowledge of all the facts, hereby certify that the attached directional survey run from a measured depth of 0 feet to a measured depth of 11557 feet is true and correct as determined from all available records.

A handwritten signature in blue ink, appearing to read 'Robert H. Scott II'.

Signature

16-Feb-2016

Date

### Robert H. Scott II

Rockies Region Well Planner  
Scientific Drilling - Rocky Mountain District

WELL DETAILS: SRC Vista 43-2N-C

		GL 5000' & KB 20' @ 5020.00ft (Precision 462) 5000.00			
+N/-S	+E/-W	Northing	Easting	Latitude	Longitude
0.00	0.00	1367657.28	3145254.86	40.34144873	-104.97890500

Project: Weld County, CO NAD 83  
Site: SRC Vista  
Well: SRC Vista 43-2N-C  
Wellbore: OH  
Design: OH

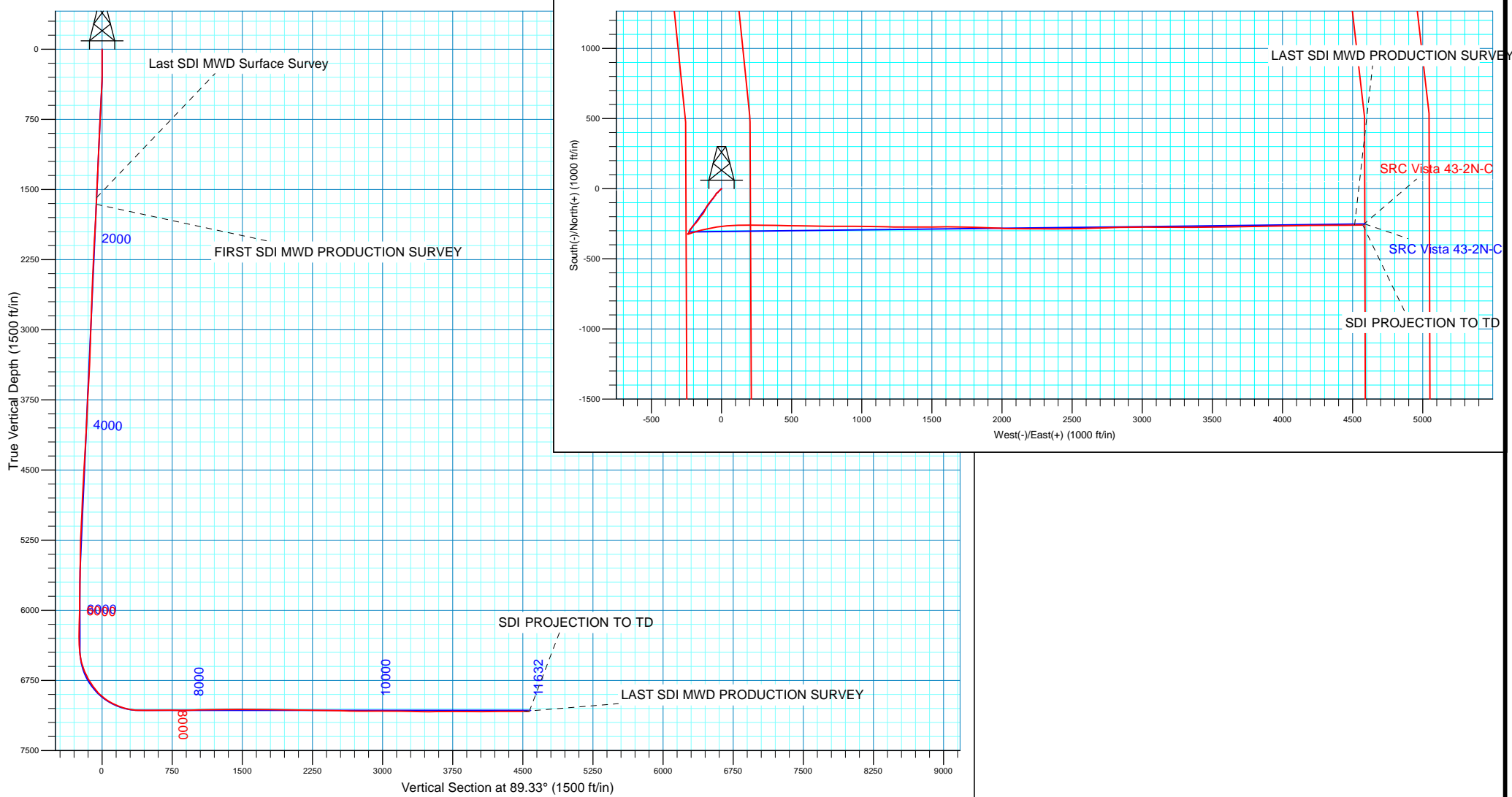
PROJECT DETAILS: Weld County, CO NAD 83

Geodetic System: US State Plane 1983  
Datum: North American Datum 1983  
Ellipsoid: GRS 1980  
Zone: Colorado Northern Zone  
System Datum: Mean Sea Level  
Local North: True



Azimuths to True North  
Magnetic North: 8.64°

Magnetic Field  
Strength: 52519.6snT  
Dip Angle: 66.87°  
Date: 10/27/2015  
Model: BGGM2015





## **Synergy Resources Corp.**

Weld County, CO NAD 83

SRC Vista

SRC Vista 43-2N-C

OH

Design: OH

## **Standard Survey Report**

16 February, 2016



<b>Company:</b>	Synergy Resources Corp.	<b>Local Co-ordinate Reference:</b>	Well SRC Vista 43-2N-C
<b>Project:</b>	Weld County, CO NAD 83	<b>TVD Reference:</b>	GL 5000' & KB 20' @ 5020.00ft (Precision 462)
<b>Site:</b>	SRC Vista	<b>MD Reference:</b>	GL 5000' & KB 20' @ 5020.00ft (Precision 462)
<b>Well:</b>	SRC Vista 43-2N-C	<b>North Reference:</b>	True
<b>Wellbore:</b>	OH	<b>Survey Calculation Method:</b>	Minimum Curvature
<b>Design:</b>	OH	<b>Database:</b>	Casper District

<b>Project</b>	Weld County, CO NAD 83		
<b>Map System:</b>	US State Plane 1983	<b>System Datum:</b>	Mean Sea Level
<b>Geo Datum:</b>	North American Datum 1983		
<b>Map Zone:</b>	Colorado Northern Zone		

Site	SRC Vista, Site Center: S-2N-C				
Site Position:		Northing:	1,367,716.75 usft	Latitude:	40.34161200
From:	Lat/Long	Easting:	3,145,254.51 usft	Longitude:	-104.97890500
Position Uncertainty:	0.00 ft	Slot Radius:	13.200 in	Grid Convergence:	0.34 °

Well	SRC Vista 43-2N-C, 2163' FSL 254' FWL Sec 2 T4N R68W					
Well Position	+N/-S	0.00 ft	Northing:	1,367,657.28 usft	Latitude:	40.34144873
	+E/-W	0.00 ft	Easting:	3,145,254.86 usft	Longitude:	-104.97890500
Position Uncertainty		0.00 ft	Wellhead Elevation:	0.00 ft	Ground Level:	5,000.00 ft

<b>Wellbore</b>	OH				
<b>Magnetics</b>	<b>Model Name</b>	<b>Sample Date</b>	<b>Declination (°)</b>	<b>Dip Angle (°)</b>	<b>Field Strength (nT)</b>
	BGGM2015	10/27/2015	8.64	66.87	52,520

<b>Design</b>	OH				
<b>Audit Notes:</b>					
<b>Version:</b>	1.0	<b>Phase:</b>	ACTUAL	<b>Tie On Depth:</b>	0.00
<b>Vertical Section:</b>	<b>Depth From (TVD) (ft)</b>	<b>+N/-S (ft)</b>	<b>+E/-W (ft)</b>	<b>Direction (°)</b>	
	0.00	0.00	0.00	89.33	

<b>Survey Program</b>	<b>Date</b>	2/16/2016			
<b>From (ft)</b>	<b>To (ft)</b>	<b>Survey (Wellbore)</b>	<b>Tool Name</b>	<b>Description</b>	
195.00	1,589.00	Survey #1 - Surface (OH)	SDI MWD	SDI MWD - Standard ver 1.0.1	
1,663.00	11,615.00	Survey #2 Production (OH)	SDI MWD	SDI MWD - Standard ver 1.0.1	

<b>Survey</b>										
<b>Measured Depth (ft)</b>	<b>Inclination (°)</b>	<b>Azimuth (°)</b>	<b>Vertical Depth (ft)</b>	<b>+N/-S (ft)</b>	<b>+E/-W (ft)</b>	<b>Vertical Section (ft)</b>	<b>Dogleg Rate (°/100ft)</b>	<b>Build Rate (°/100ft)</b>	<b>Turn Rate (°/100ft)</b>	
0.00	0.00	0.00	0.00	0.00	0.00	0.00	0.00	0.00	0.00	
195.00	0.32	136.89	195.00	-0.40	0.37	0.37	0.16	0.16	0.00	
<b>First SDI MWD Survey</b>										
286.00	0.84	238.48	286.00	-0.93	-0.02	-0.03	1.05	0.57	111.64	
468.00	3.58	227.85	467.84	-5.44	-5.37	-5.44	1.52	1.51	-5.84	
561.00	4.21	234.24	560.63	-9.39	-10.30	-10.41	0.82	0.68	6.87	
655.00	4.44	223.47	654.36	-14.04	-15.60	-15.76	0.90	0.24	-11.46	
749.00	4.22	218.72	748.09	-19.38	-20.27	-20.49	0.45	-0.23	-5.05	
844.00	4.29	223.09	842.83	-24.70	-24.88	-25.17	0.35	0.07	4.60	
939.00	3.91	240.14	937.59	-28.91	-30.12	-30.45	1.34	-0.40	17.95	

<b>Company:</b>	Synergy Resources Corp.	<b>Local Co-ordinate Reference:</b>	Well SRC Vista 43-2N-C
<b>Project:</b>	Weld County, CO NAD 83	<b>TVD Reference:</b>	GL 5000' & KB 20' @ 5020.00ft (Precision 462)
<b>Site:</b>	SRC Vista	<b>MD Reference:</b>	GL 5000' & KB 20' @ 5020.00ft (Precision 462)
<b>Well:</b>	SRC Vista 43-2N-C	<b>North Reference:</b>	True
<b>Wellbore:</b>	OH	<b>Survey Calculation Method:</b>	Minimum Curvature
<b>Design:</b>	OH	<b>Database:</b>	Casper District

Survey										
Measured Depth (ft)	Inclination (°)	Azimuth (°)	Vertical Depth (ft)	+N/-S (ft)	+E/-W (ft)	Vertical Section (ft)	Dogleg Rate (°/100ft)	Build Rate (°/100ft)	Turn Rate (°/100ft)	
1,034.00	3.65	229.89	1,032.39	-32.47	-35.24	-35.62	0.76	-0.27	-10.79	
1,128.00	3.86	204.78	1,126.19	-37.27	-38.85	-39.29	1.75	0.22	-26.71	
1,223.00	4.20	209.34	1,220.96	-43.21	-41.90	-42.40	0.49	0.36	4.80	
1,317.00	4.09	214.08	1,314.71	-48.99	-45.46	-46.03	0.38	-0.12	5.04	
1,411.00	4.10	214.29	1,408.47	-54.54	-49.23	-49.87	0.02	0.01	0.22	
1,506.00	3.95	216.46	1,503.24	-59.98	-53.09	-53.79	0.23	-0.16	2.28	
1,589.00	4.30	221.90	1,586.02	-64.59	-56.87	-57.62	0.63	0.42	6.55	
<b>Last SDI MWD Surface Survey</b>										
1,663.00	4.00	223.94	1,659.83	-68.52	-60.51	-61.31	0.45	-0.41	2.76	
<b>FIRST SDI MWD PRODUCTION SURVEY</b>										
1,756.00	4.43	219.54	1,752.58	-73.62	-65.05	-65.91	0.58	0.46	-4.73	
1,850.00	4.60	218.55	1,846.28	-79.37	-69.71	-70.63	0.20	0.18	-1.05	
1,944.00	5.80	220.30	1,939.90	-85.94	-75.13	-76.13	1.29	1.28	1.86	
2,038.00	5.15	217.86	2,033.47	-92.89	-80.79	-81.87	0.73	-0.69	-2.60	
2,131.00	4.93	214.24	2,126.11	-99.49	-85.60	-86.76	0.42	-0.24	-3.89	
2,225.00	3.98	213.93	2,219.82	-105.54	-89.70	-90.93	1.01	-1.01	-0.33	
2,319.00	3.86	221.02	2,313.60	-110.63	-93.59	-94.88	0.53	-0.13	7.54	
2,413.00	4.11	219.39	2,407.38	-115.62	-97.81	-99.15	0.29	0.27	-1.73	
2,508.00	4.02	211.51	2,502.14	-121.09	-101.71	-103.12	0.60	-0.09	-8.29	
2,604.00	3.71	208.66	2,597.92	-126.69	-104.96	-106.43	0.38	-0.32	-2.97	
2,698.00	4.83	205.31	2,691.66	-132.93	-108.11	-109.66	1.22	1.19	-3.56	
2,793.00	4.51	206.23	2,786.34	-139.90	-111.47	-113.10	0.35	-0.34	0.97	
2,889.00	4.02	203.94	2,882.08	-146.36	-114.50	-116.21	0.54	-0.51	-2.39	
2,982.00	4.17	207.61	2,974.84	-152.34	-117.39	-119.17	0.32	0.16	3.95	
3,075.00	3.75	210.01	3,067.62	-157.97	-120.48	-122.32	0.49	-0.45	2.58	
3,193.00	4.59	209.53	3,185.30	-165.42	-124.74	-126.66	0.71	0.71	-0.41	
3,287.00	3.69	205.85	3,279.06	-171.41	-127.91	-129.91	1.00	-0.96	-3.91	
3,382.00	3.79	214.28	3,373.86	-176.76	-131.01	-133.07	0.59	0.11	8.87	
3,476.00	4.68	222.97	3,467.60	-182.13	-135.38	-137.50	1.16	0.95	9.24	
3,570.00	5.60	221.51	3,561.22	-188.37	-141.03	-143.22	0.99	0.98	-1.55	
3,663.00	5.13	216.97	3,653.81	-195.09	-146.54	-148.81	0.68	-0.51	-4.88	
3,759.00	5.09	215.64	3,749.43	-201.98	-151.60	-153.95	0.13	-0.04	-1.39	
3,853.00	4.54	212.58	3,843.10	-208.50	-156.03	-158.46	0.65	-0.59	-3.26	
3,946.00	3.47	215.63	3,935.87	-213.89	-159.66	-162.15	1.17	-1.15	3.28	
4,039.00	4.24	211.57	4,028.66	-219.11	-163.09	-165.65	0.88	0.83	-4.37	
4,133.00	5.64	216.90	4,122.31	-225.76	-167.69	-170.32	1.57	1.49	5.67	
4,228.00	6.08	219.48	4,216.81	-233.38	-173.69	-176.41	0.54	0.46	2.72	
4,321.00	4.88	220.69	4,309.39	-240.18	-179.40	-182.20	1.30	-1.29	1.30	
4,416.00	4.97	225.75	4,404.03	-246.12	-184.98	-187.85	0.47	0.09	5.33	
4,511.00	4.59	224.10	4,498.70	-251.72	-190.57	-193.51	0.43	-0.40	-1.74	
4,606.00	4.59	221.63	4,593.40	-257.29	-195.75	-198.74	0.21	0.00	-2.60	
4,700.00	4.47	221.46	4,687.11	-262.85	-200.67	-203.73	0.13	-0.13	-0.18	
4,793.00	3.71	226.29	4,779.87	-267.64	-205.24	-208.36	0.90	-0.82	5.19	

<b>Company:</b>	Synergy Resources Corp.	<b>Local Co-ordinate Reference:</b>	Well SRC Vista 43-2N-C
<b>Project:</b>	Weld County, CO NAD 83	<b>TVD Reference:</b>	GL 5000' & KB 20' @ 5020.00ft (Precision 462)
<b>Site:</b>	SRC Vista	<b>MD Reference:</b>	GL 5000' & KB 20' @ 5020.00ft (Precision 462)
<b>Well:</b>	SRC Vista 43-2N-C	<b>North Reference:</b>	True
<b>Wellbore:</b>	OH	<b>Survey Calculation Method:</b>	Minimum Curvature
<b>Design:</b>	OH	<b>Database:</b>	Casper District

Survey									
Measured Depth (ft)	Inclination (°)	Azimuth (°)	Vertical Depth (ft)	+N/-S (ft)	+E/-W (ft)	Vertical Section (ft)	Dogleg Rate (°/100ft)	Build Rate (°/100ft)	Turn Rate (°/100ft)
4,888.00	3.38	207.36	4,874.69	-272.25	-208.75	-211.92	1.27	-0.35	-19.93
4,982.00	4.88	220.93	4,968.45	-277.73	-212.65	-215.88	1.89	1.60	14.44
5,075.00	4.13	219.82	5,061.16	-283.30	-217.38	-220.68	0.81	-0.81	-1.19
5,168.00	4.03	221.73	5,153.92	-288.31	-221.70	-225.06	0.18	-0.11	2.05
5,263.00	3.60	205.16	5,248.71	-293.50	-225.19	-228.61	1.24	-0.45	-17.44
5,358.00	3.35	192.32	5,343.54	-298.91	-227.05	-230.53	0.86	-0.26	-13.52
5,450.00	2.98	197.62	5,435.40	-303.81	-228.35	-231.89	0.51	-0.40	5.76
5,543.00	3.13	196.35	5,528.27	-308.55	-229.80	-233.39	0.18	0.16	-1.37
5,637.00	2.52	211.46	5,622.16	-312.78	-231.60	-235.24	1.02	-0.65	16.07
5,732.00	1.27	232.95	5,717.10	-315.20	-233.53	-237.20	1.49	-1.32	22.62
5,827.00	1.77	212.72	5,812.07	-317.06	-235.16	-238.85	0.76	0.53	-21.29
5,921.00	1.11	215.44	5,906.04	-319.03	-236.47	-240.19	0.71	-0.70	2.89
6,017.00	1.21	244.25	6,002.02	-320.23	-237.93	-241.65	0.61	0.10	30.01
6,110.00	1.33	207.23	6,095.00	-321.61	-239.30	-243.05	0.88	0.13	-39.81
6,205.00	0.64	185.54	6,189.98	-323.12	-239.86	-243.62	0.81	-0.73	-22.83
6,299.00	0.08	252.96	6,283.98	-323.66	-239.97	-243.74	0.65	-0.60	71.72
6,393.00	0.57	238.36	6,377.98	-323.93	-240.43	-244.21	0.52	0.52	-15.53
6,488.00	9.12	76.55	6,472.60	-322.42	-233.50	-237.25	10.17	9.00	-170.33
6,582.00	15.78	68.71	6,564.35	-316.04	-214.32	-218.00	7.29	7.09	-8.34
6,677.00	22.99	73.52	6,653.91	-306.07	-184.45	-188.02	7.77	7.59	5.06
6,770.00	31.15	78.03	6,736.66	-295.91	-143.43	-146.88	9.04	8.77	4.85
6,865.00	35.58	75.87	6,815.98	-284.06	-92.57	-95.88	4.83	4.66	-2.27
6,959.00	44.12	82.01	6,888.11	-272.81	-33.52	-36.70	9.99	9.09	6.53
7,053.00	54.70	84.56	6,949.19	-264.61	37.28	34.18	11.44	11.26	2.71
7,147.00	63.11	88.94	6,997.71	-260.18	117.55	114.50	9.79	8.95	4.66
7,240.00	70.30	90.67	7,034.47	-259.93	202.91	199.85	7.92	7.73	1.86
7,333.00	78.81	90.51	7,059.21	-260.85	292.46	289.39	9.15	9.15	-0.17
7,426.00	88.16	90.66	7,069.75	-261.79	384.75	381.67	10.06	10.05	0.16
7,521.00	91.14	90.82	7,070.33	-263.02	479.73	476.63	3.14	3.14	0.17
7,613.00	90.54	91.13	7,068.98	-264.58	571.71	568.58	0.73	-0.65	0.34
7,707.00	89.90	90.86	7,068.62	-266.22	665.69	662.54	0.74	-0.68	-0.29
7,799.00	89.66	90.29	7,068.98	-267.14	757.69	754.51	0.67	-0.26	-0.62
7,892.00	89.57	90.03	7,069.60	-267.40	850.69	847.50	0.30	-0.10	-0.28
7,987.00	91.52	90.30	7,068.70	-267.67	945.68	942.48	2.07	2.05	0.28
8,081.00	91.67	90.84	7,066.08	-268.61	1,039.64	1,036.42	0.60	0.16	0.57
8,176.00	91.00	91.67	7,063.87	-270.69	1,134.59	1,131.34	1.12	-0.71	0.87
8,270.00	90.91	90.29	7,062.30	-272.29	1,228.56	1,225.29	1.47	-0.10	-1.47
8,363.00	90.57	89.96	7,061.10	-272.50	1,321.55	1,318.27	0.51	-0.37	-0.35
8,458.00	89.26	89.90	7,061.24	-272.38	1,416.55	1,413.26	1.38	-1.38	-0.06
8,553.00	90.10	89.64	7,061.77	-272.00	1,511.54	1,508.26	0.93	0.88	-0.27
8,648.00	89.13	90.21	7,062.41	-271.88	1,606.54	1,603.25	1.18	-1.02	0.60
8,743.00	91.01	90.60	7,062.29	-272.55	1,701.53	1,698.23	2.02	1.98	0.41
8,838.00	89.56	91.74	7,061.82	-274.49	1,796.51	1,793.17	1.94	-1.53	1.20
8,932.00	89.36	92.34	7,062.71	-277.83	1,890.44	1,887.07	0.67	-0.21	0.64

<b>Company:</b>	Synergy Resources Corp.	<b>Local Co-ordinate Reference:</b>	Well SRC Vista 43-2N-C
<b>Project:</b>	Weld County, CO NAD 83	<b>TVD Reference:</b>	GL 5000' & KB 20' @ 5020.00ft (Precision 462)
<b>Site:</b>	SRC Vista	<b>MD Reference:</b>	GL 5000' & KB 20' @ 5020.00ft (Precision 462)
<b>Well:</b>	SRC Vista 43-2N-C	<b>North Reference:</b>	True
<b>Wellbore:</b>	OH	<b>Survey Calculation Method:</b>	Minimum Curvature
<b>Design:</b>	OH	<b>Database:</b>	Casper District

Survey										
Measured Depth (ft)	Inclination (°)	Azimuth (°)	Vertical Depth (ft)	+N/-S (ft)	+E/-W (ft)	Vertical Section (ft)	Dogleg Rate (°/100ft)	Build Rate (°/100ft)	Turn Rate (°/100ft)	
9,027.00	89.29	92.60	7,063.83	-281.93	1,985.35	1,981.92	0.28	-0.07	0.27	
9,122.00	87.52	90.58	7,066.47	-284.56	2,080.27	2,076.80	2.83	-1.86	-2.13	
9,215.00	88.46	90.16	7,069.73	-285.16	2,173.21	2,169.72	1.11	1.01	-0.45	
9,310.00	90.34	90.35	7,070.73	-285.59	2,268.20	2,264.70	1.99	1.98	0.20	
9,405.00	88.42	90.16	7,071.76	-286.01	2,363.18	2,359.68	2.03	-2.02	-0.20	
9,500.00	89.53	89.73	7,073.45	-285.92	2,458.17	2,454.66	1.25	1.17	-0.45	
9,595.00	88.19	88.46	7,075.34	-284.42	2,553.13	2,549.63	1.94	-1.41	-1.34	
9,688.00	89.16	88.09	7,077.50	-281.62	2,646.06	2,642.59	1.12	1.04	-0.40	
9,784.00	89.16	88.12	7,078.90	-278.44	2,742.00	2,738.56	0.03	0.00	0.03	
9,879.00	90.64	88.49	7,079.07	-275.63	2,836.96	2,833.54	1.61	1.56	0.39	
9,974.00	90.10	89.55	7,078.45	-274.01	2,931.94	2,928.53	1.25	-0.57	1.12	
10,068.00	88.93	90.00	7,079.25	-273.64	3,025.93	3,022.53	1.33	-1.24	0.48	
10,163.00	90.50	90.72	7,079.72	-274.24	3,120.93	3,117.51	1.82	1.65	0.76	
10,258.00	88.59	90.06	7,080.48	-274.88	3,215.92	3,212.48	2.13	-2.01	-0.69	
10,354.00	89.46	90.16	7,082.11	-275.07	3,311.90	3,308.46	0.91	0.91	0.10	
10,449.00	88.89	89.65	7,083.48	-274.91	3,406.89	3,403.44	0.81	-0.60	-0.54	
10,544.00	89.83	89.11	7,084.54	-273.88	3,501.88	3,498.44	1.14	0.99	-0.57	
10,639.00	90.91	89.38	7,083.93	-272.63	3,596.87	3,593.43	1.17	1.14	0.28	
10,733.00	90.27	88.68	7,082.96	-271.04	3,690.85	3,687.43	1.01	-0.68	-0.74	
10,828.00	90.03	88.57	7,082.71	-268.76	3,785.82	3,782.42	0.28	-0.25	-0.12	
10,924.00	89.20	89.17	7,083.35	-266.87	3,881.80	3,878.41	1.07	-0.86	0.63	
11,019.00	89.76	89.22	7,084.22	-265.53	3,976.78	3,973.41	0.59	0.59	0.05	
11,111.00	91.34	88.94	7,083.33	-264.06	4,068.76	4,065.40	1.74	1.72	-0.30	
11,206.00	90.13	89.17	7,082.12	-262.49	4,163.74	4,160.39	1.30	-1.27	0.24	
11,301.00	89.46	89.56	7,082.46	-261.44	4,258.73	4,255.39	0.82	-0.71	0.41	
11,395.00	90.57	89.81	7,082.43	-260.92	4,352.73	4,349.38	1.21	1.18	0.27	
11,490.00	89.36	89.20	7,082.49	-260.10	4,447.73	4,444.38	1.43	-1.27	-0.64	
11,557.00	89.97	89.20	7,082.88	-259.16	4,514.72	4,511.38	0.91	0.91	0.00	
LAST SDI MWD PRODUCTION SURVEY										
11,615.00	89.97	89.20	7,082.91	-258.35	4,572.71	4,569.38	0.00	0.00	0.00	
SDI PROJECTION TO TD										

Design Annotations					
Measured Depth (ft)	Vertical Depth (ft)	Local Coordinates			
		+N/-S (ft)	+E/-W (ft)	Comment	
195.00	195.00	-0.40	0.37	First SDI MWD Survey	
1,589.00	1,586.02	-64.59	-56.87	Last SDI MWD Surface Survey	
1,663.00	1,659.83	-68.52	-60.51	FIRST SDI MWD PRODUCTION SURVEY	
11,557.00	7,082.88	-259.16	4,514.72	LAST SDI MWD PRODUCTION SURVEY	
11,615.00	7,082.91	-258.35	4,572.71	SDI PROJECTION TO TD	

<b>Company:</b>	Synergy Resources Corp.	<b>Local Co-ordinate Reference:</b>	Well SRC Vista 43-2N-C
<b>Project:</b>	Weld County, CO NAD 83	<b>TVD Reference:</b>	GL 5000' & KB 20' @ 5020.00ft (Precision 462)
<b>Site:</b>	SRC Vista	<b>MD Reference:</b>	GL 5000' & KB 20' @ 5020.00ft (Precision 462)
<b>Well:</b>	SRC Vista 43-2N-C	<b>North Reference:</b>	True
<b>Wellbore:</b>	OH	<b>Survey Calculation Method:</b>	Minimum Curvature
<b>Design:</b>	OH	<b>Database:</b>	Casper District

Checked By: \_\_\_\_\_ Approved By: \_\_\_\_\_ Date: \_\_\_\_\_