



## Survey Certification

7327 West Barton Road  
Casper, WY 82604  
(307)-472-6621 Fax (307) 472-5439

Operator	Synergy Resources Corp.
Well Name & No.	SRC Vista 43-2C
API #	05-123-41054
County & State	Weld County, CO
SDI Job No.	345082
Rig	PD 462
Survey Date	18-Feb-2016

I, Robert Scott, having personal knowledge of all the facts, hereby certify that the attached directional survey run from a measured depth of 0 feet to a measured depth of 11640 feet is true and correct as determined from all available records.

A handwritten signature in blue ink, appearing to read 'Robert H. Scott II', is written over a horizontal line.

Signature

22-Feb-2016

Date

### Robert H. Scott II

Rockies Region Well Planner  
Scientific Drilling - Rocky Mountain District

Project: Weld County, CO NAD 83  
Site: SRC Vista  
Well: SRC Vista 43-2C  
Wellbore: OH  
Design: OH

WELL DETAILS: SRC Vista 43-2C

		GL 5000' & KB 20' @ 5020.00ft (Precision 462) 5000.00			
+N/-S	+E/-W	Northing	Easting	Latitude	Longitude
0.00	0.00	1367677.03	3145254.75	40.3415030	-104.9789050

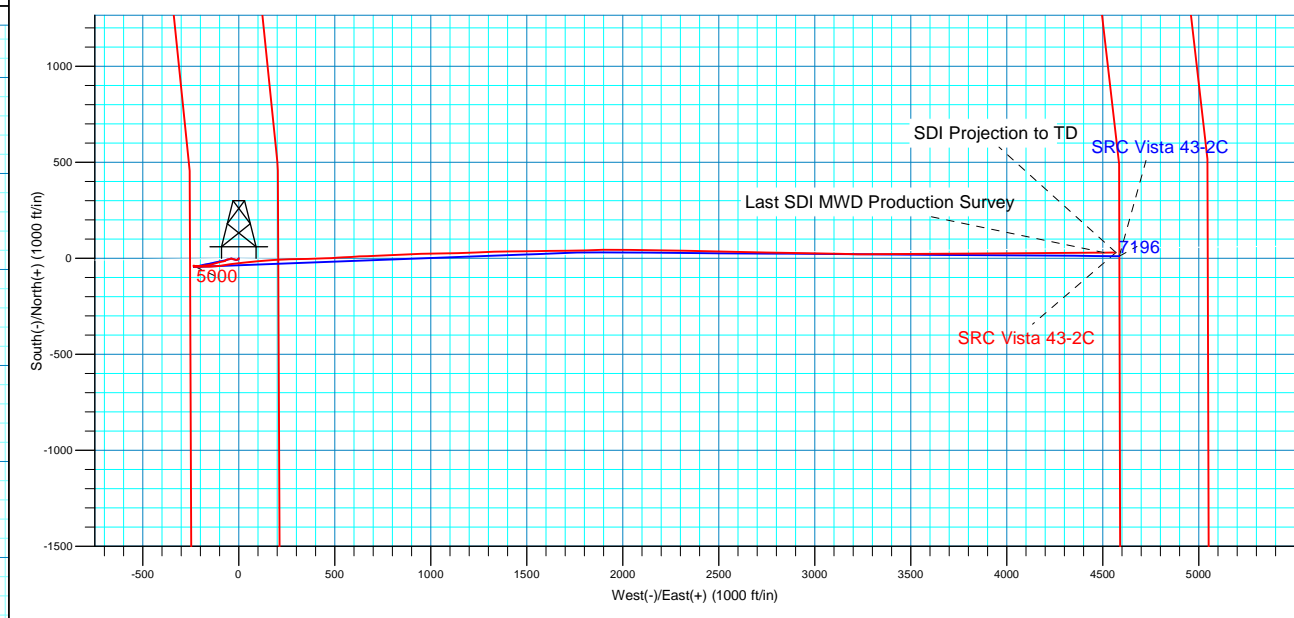
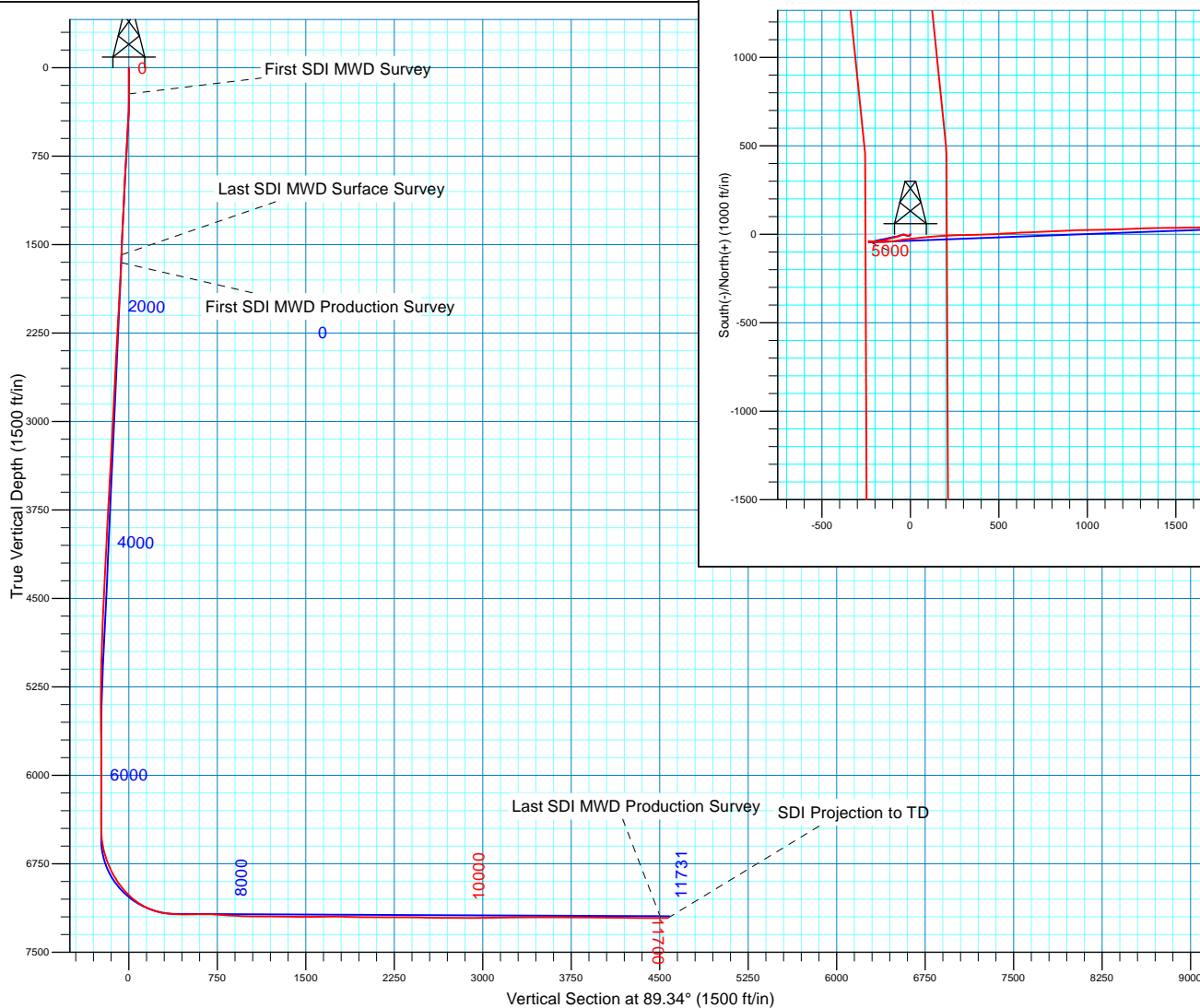
PROJECT DETAILS: Weld County, CO NAD 83

Geodetic System: US State Plane 1983  
Datum: North American Datum 1983  
Ellipsoid: GRS 1980  
Zone: Colorado Northern Zone  
System Datum: Mean Sea Level  
Local North: True



Azimuths to True North  
Magnetic North: 8.61°

Magnetic Field  
Strength: 52486.2snT  
Dip Angle: 66.86°  
Date: 2/12/2016  
Model: BGGM2015





## **Synergy Resources Corp.**

Weld County, CO NAD 83

SRC Vista

SRC Vista 43-2C

OH

Design: OH

## **Standard Survey Report**

22 February, 2016



<b>Company:</b>	Synergy Resources Corp.	<b>Local Co-ordinate Reference:</b>	Well SRC Vista 43-2C
<b>Project:</b>	Weld County, CO NAD 83	<b>TVD Reference:</b>	GL 5000' & KB 20' @ 5020.00ft (Precision 462)
<b>Site:</b>	SRC Vista	<b>MD Reference:</b>	GL 5000' & KB 20' @ 5020.00ft (Precision 462)
<b>Well:</b>	SRC Vista 43-2C	<b>North Reference:</b>	True
<b>Wellbore:</b>	OH	<b>Survey Calculation Method:</b>	Minimum Curvature
<b>Design:</b>	OH	<b>Database:</b>	Casper District

<b>Project</b>	Weld County, CO NAD 83		
<b>Map System:</b>	US State Plane 1983	<b>System Datum:</b>	Mean Sea Level
<b>Geo Datum:</b>	North American Datum 1983		
<b>Map Zone:</b>	Colorado Northern Zone		

Site	SRC Vista, Site Center: S-2N-C				
Site Position:		Northing:	1,367,716.75 usft	Latitude:	40.3416120
From:	Lat/Long	Easting:	3,145,254.51 usft	Longitude:	-104.9789050
Position Uncertainty:	0.00 ft	Slot Radius:	13.200 in	Grid Convergence:	0.34 °

Well	SRC Vista 43-2C, 2183' FSL 254' FWL Sec 2 T4N R68W					
Well Position	+N/-S	0.00 ft	Northing:	1,367,677.03 usft	Latitude:	40.3415030
	+E/-W	0.00 ft	Easting:	3,145,254.75 usft	Longitude:	-104.9789050
Position Uncertainty		0.00 ft	Wellhead Elevation:	0.00 ft	Ground Level:	5,000.00 ft

<b>Wellbore</b>	OH				
<b>Magnetics</b>	<b>Model Name</b>	<b>Sample Date</b>	<b>Declination (°)</b>	<b>Dip Angle (°)</b>	<b>Field Strength (nT)</b>
	BGGM2015	2/12/2016	8.61	66.86	52,486

<b>Design</b>	OH				
<b>Audit Notes:</b>					
<b>Version:</b>	1.0	<b>Phase:</b>	ACTUAL	<b>Tie On Depth:</b>	0.00
<b>Vertical Section:</b>	<b>Depth From (TVD) (ft)</b>	<b>+N/-S (ft)</b>	<b>+E/-W (ft)</b>	<b>Direction (°)</b>	
	0.00	0.00	0.00	89.34	

<b>Survey Program</b>	<b>Date</b>	2/22/2016			
<b>From (ft)</b>	<b>To (ft)</b>	<b>Survey (Wellbore)</b>	<b>Tool Name</b>	<b>Description</b>	
225.00	1,589.00	Survey #1 - Surface (OH)	SDI MWD	SDI MWD - Standard ver 1.0.1	
1,656.00	11,700.00	Survey #2 Intermediate/Lateral (OH)	SDI MWD	SDI MWD - Standard ver 1.0.1	

<b>Survey</b>										
<b>Measured Depth (ft)</b>	<b>Inclination (°)</b>	<b>Azimuth (°)</b>	<b>Vertical Depth (ft)</b>	<b>+N/-S (ft)</b>	<b>+E/-W (ft)</b>	<b>Vertical Section (ft)</b>	<b>Dogleg Rate (°/100ft)</b>	<b>Build Rate (°/100ft)</b>	<b>Turn Rate (°/100ft)</b>	
0.00	0.00	0.00	0.00	0.00	0.00	0.00	0.00	0.00	0.00	
225.00	0.77	183.63	224.99	-1.51	-0.10	-0.11	0.34	0.34	0.00	
<b>First SDI MWD Survey</b>										
286.00	1.18	196.02	285.98	-2.52	-0.30	-0.32	0.75	0.67	20.31	
377.00	1.91	238.86	376.95	-4.21	-1.85	-1.90	1.45	0.80	47.08	
468.00	2.68	244.72	467.88	-5.90	-5.07	-5.14	0.88	0.85	6.44	
561.00	3.12	260.79	560.76	-7.23	-9.54	-9.62	0.99	0.47	17.28	
655.00	3.46	280.66	654.61	-7.12	-14.85	-14.93	1.26	0.36	21.14	
749.00	3.96	279.07	748.41	-6.08	-20.84	-20.91	0.54	0.53	-1.69	
844.00	3.66	285.66	843.20	-4.75	-27.00	-27.06	0.56	-0.32	6.94	

<b>Company:</b>	Synergy Resources Corp.	<b>Local Co-ordinate Reference:</b>	Well SRC Vista 43-2C
<b>Project:</b>	Weld County, CO NAD 83	<b>TVD Reference:</b>	GL 5000' & KB 20' @ 5020.00ft (Precision 462)
<b>Site:</b>	SRC Vista	<b>MD Reference:</b>	GL 5000' & KB 20' @ 5020.00ft (Precision 462)
<b>Well:</b>	SRC Vista 43-2C	<b>North Reference:</b>	True
<b>Wellbore:</b>	OH	<b>Survey Calculation Method:</b>	Minimum Curvature
<b>Design:</b>	OH	<b>Database:</b>	Casper District

Survey									
Measured Depth (ft)	Inclination (°)	Azimuth (°)	Vertical Depth (ft)	+N/-S (ft)	+E/-W (ft)	Vertical Section (ft)	Dogleg Rate (°/100ft)	Build Rate (°/100ft)	Turn Rate (°/100ft)
939.00	3.07	286.14	938.04	-3.22	-32.37	-32.40	0.62	-0.62	0.51
1,034.00	2.46	285.27	1,032.93	-1.98	-36.78	-36.80	0.64	-0.64	-0.92
1,128.00	2.64	260.11	1,126.84	-1.82	-40.86	-40.87	1.20	0.19	-26.77
1,223.00	3.61	253.59	1,221.70	-3.04	-45.88	-45.91	1.09	1.02	-6.86
1,317.00	3.26	252.25	1,315.53	-4.69	-51.26	-51.31	0.38	-0.37	-1.43
1,411.00	1.97	258.73	1,409.43	-5.82	-55.39	-55.46	1.41	-1.37	6.89
1,506.00	1.88	271.21	1,504.37	-6.10	-58.55	-58.62	0.45	-0.09	13.14
1,589.00	2.62	242.92	1,587.31	-6.94	-61.60	-61.68	1.58	0.89	-34.08
<b>Last SDI MWD Surface Survey</b>									
1,656.00	3.17	230.33	1,654.23	-8.82	-64.39	-64.49	1.25	0.82	-18.79
<b>First SDI MWD Production Survey</b>									
1,749.00	2.92	232.74	1,747.10	-11.90	-68.26	-68.39	0.30	-0.27	2.59
1,843.00	3.54	258.03	1,840.95	-13.95	-73.00	-73.16	1.64	0.66	26.90
1,937.00	3.51	259.22	1,934.77	-15.09	-78.67	-78.84	0.08	-0.03	1.27
2,030.00	3.16	261.18	2,027.61	-16.01	-84.00	-84.18	0.40	-0.38	2.11
2,124.00	3.21	259.92	2,121.47	-16.87	-89.15	-89.34	0.09	0.05	-1.34
2,218.00	3.20	252.73	2,215.32	-18.11	-94.25	-94.45	0.43	-0.01	-7.65
2,312.00	3.05	251.69	2,309.18	-19.67	-99.13	-99.35	0.17	-0.16	-1.11
2,406.00	3.30	252.38	2,403.04	-21.28	-104.08	-104.32	0.27	0.27	0.73
2,501.00	3.37	254.45	2,497.88	-22.85	-109.37	-109.63	0.15	0.07	2.18
2,597.00	3.20	260.46	2,593.72	-24.06	-114.73	-115.00	0.40	-0.18	6.26
2,691.00	2.88	252.49	2,687.59	-25.20	-119.57	-119.86	0.56	-0.34	-8.48
2,786.00	2.58	253.68	2,782.48	-26.52	-123.90	-124.20	0.32	-0.32	1.25
2,881.00	2.01	259.03	2,877.40	-27.44	-127.59	-127.90	0.64	-0.60	5.63
2,975.00	3.53	255.07	2,971.29	-28.50	-132.00	-132.32	1.63	1.62	-4.21
3,067.00	3.55	255.72	3,063.12	-29.93	-137.50	-137.84	0.05	0.02	0.71
3,161.00	2.97	249.34	3,156.96	-31.51	-142.60	-142.95	0.73	-0.62	-6.79
3,255.00	3.16	250.25	3,250.83	-33.24	-147.32	-147.69	0.21	0.20	0.97
3,350.00	3.26	258.87	3,345.68	-34.65	-152.43	-152.82	0.52	0.11	9.07
3,444.00	2.97	260.90	3,439.54	-35.55	-157.46	-157.86	0.33	-0.31	2.16
3,538.00	3.18	264.91	3,533.41	-36.16	-162.46	-162.87	0.32	0.22	4.27
3,631.00	3.51	263.48	3,626.25	-36.72	-167.86	-168.27	0.37	0.35	-1.54
3,727.00	3.18	270.38	3,722.08	-37.03	-173.44	-173.86	0.54	-0.34	7.19
3,821.00	2.49	278.26	3,815.97	-36.72	-178.07	-178.48	0.84	-0.73	8.38
3,915.00	2.88	251.74	3,909.87	-37.17	-182.33	-182.75	1.37	0.41	-28.21
4,007.00	2.42	247.82	4,001.77	-38.63	-186.33	-186.76	0.54	-0.50	-4.26
4,101.00	3.09	265.42	4,095.66	-39.58	-190.69	-191.13	1.14	0.71	18.72
4,196.00	3.12	264.56	4,190.52	-40.03	-195.82	-196.26	0.06	0.03	-0.91
4,289.00	3.13	268.90	4,283.39	-40.32	-200.87	-201.32	0.25	0.01	4.67
4,384.00	2.84	273.62	4,378.26	-40.22	-205.82	-206.26	0.40	-0.31	4.97
4,479.00	2.85	277.03	4,473.14	-39.78	-210.51	-210.95	0.18	0.01	3.59
4,574.00	2.42	274.11	4,568.04	-39.35	-214.85	-215.29	0.47	-0.45	-3.07
4,668.00	2.13	269.74	4,661.97	-39.21	-218.58	-219.02	0.36	-0.31	-4.65

<b>Company:</b>	Synergy Resources Corp.	<b>Local Co-ordinate Reference:</b>	Well SRC Vista 43-2C
<b>Project:</b>	Weld County, CO NAD 83	<b>TVD Reference:</b>	GL 5000' & KB 20' @ 5020.00ft (Precision 462)
<b>Site:</b>	SRC Vista	<b>MD Reference:</b>	GL 5000' & KB 20' @ 5020.00ft (Precision 462)
<b>Well:</b>	SRC Vista 43-2C	<b>North Reference:</b>	True
<b>Wellbore:</b>	OH	<b>Survey Calculation Method:</b>	Minimum Curvature
<b>Design:</b>	OH	<b>Database:</b>	Casper District

Survey										
Measured Depth (ft)	Inclination (°)	Azimuth (°)	Vertical Depth (ft)	+N/-S (ft)	+E/-W (ft)	Vertical Section (ft)	Dogleg Rate (°/100ft)	Build Rate (°/100ft)	Turn Rate (°/100ft)	
4,761.00	2.39	254.16	4,754.89	-39.75	-222.17	-222.62	0.71	0.28	-16.75	
4,856.00	2.30	259.96	4,849.81	-40.62	-225.96	-226.41	0.27	-0.09	6.11	
4,950.00	2.35	259.20	4,943.74	-41.31	-229.71	-230.17	0.06	0.05	-0.81	
5,043.00	0.65	249.05	5,036.70	-41.86	-232.07	-232.54	1.84	-1.83	-10.91	
5,136.00	1.01	282.49	5,129.69	-41.87	-233.36	-233.83	0.63	0.39	35.96	
5,231.00	0.76	308.10	5,224.68	-41.30	-234.68	-235.14	0.49	-0.26	26.96	
5,326.00	0.92	339.87	5,319.67	-40.20	-235.44	-235.88	0.51	0.17	33.44	
5,418.00	0.88	5.15	5,411.66	-38.80	-235.63	-236.06	0.43	-0.04	27.48	
5,512.00	0.77	318.26	5,505.65	-37.61	-235.98	-236.40	0.71	-0.12	-49.88	
5,605.00	1.31	104.81	5,598.65	-37.41	-235.37	-235.79	2.15	0.58	157.58	
5,700.00	0.80	85.47	5,693.63	-37.64	-233.66	-234.08	0.65	-0.54	-20.36	
5,795.00	0.88	87.21	5,788.62	-37.55	-232.27	-232.69	0.09	0.08	1.83	
5,890.00	1.16	180.33	5,883.61	-38.48	-231.55	-231.97	1.57	0.29	98.02	
5,985.00	0.67	181.16	5,978.60	-39.99	-231.56	-232.01	0.52	-0.52	0.87	
6,078.00	0.85	197.59	6,071.59	-41.19	-231.78	-232.24	0.30	0.19	17.67	
6,173.00	0.75	221.20	6,166.58	-42.33	-232.41	-232.88	0.36	-0.11	24.85	
6,267.00	0.08	239.22	6,260.58	-42.83	-232.87	-233.34	0.72	-0.71	19.17	
6,361.00	0.53	179.56	6,354.57	-43.30	-232.92	-233.40	0.53	0.48	-63.47	
6,456.00	0.34	190.35	6,449.57	-44.02	-232.97	-233.46	0.22	-0.20	11.36	
6,550.00	5.59	89.99	6,543.42	-44.29	-228.44	-228.93	6.02	5.59	-106.77	
6,645.00	13.93	83.66	6,636.97	-43.02	-212.41	-212.90	8.84	8.78	-6.66	
6,738.00	20.82	91.22	6,725.68	-42.14	-184.73	-185.20	7.78	7.41	8.13	
6,833.00	25.87	90.08	6,812.88	-42.53	-147.10	-147.58	5.34	5.32	-1.20	
6,927.00	34.54	82.48	6,894.07	-39.06	-100.07	-100.51	10.06	9.22	-8.09	
7,021.00	39.91	80.79	6,968.89	-30.74	-43.84	-44.19	5.81	5.71	-1.80	
7,116.00	48.69	84.42	7,036.83	-22.38	21.89	21.63	9.62	9.24	3.82	
7,208.00	57.63	84.54	7,091.93	-15.30	95.11	94.92	9.72	9.72	0.13	
7,301.00	68.11	86.17	7,134.28	-8.67	177.49	177.38	11.38	11.27	1.75	
7,395.00	75.64	88.49	7,163.51	-4.55	266.66	266.59	8.35	8.01	2.47	
7,489.00	88.12	88.66	7,176.76	-2.24	359.50	359.45	13.28	13.28	0.18	
7,581.00	90.37	87.99	7,177.97	0.45	451.45	451.42	2.55	2.45	-0.73	
7,675.00	89.40	86.20	7,178.16	5.21	545.32	545.35	2.17	-1.03	-1.90	
7,800.00	87.96	87.63	7,181.04	11.94	670.10	670.20	1.62	-1.15	1.14	
7,893.00	87.38	87.71	7,184.82	15.72	762.95	763.08	0.63	-0.62	0.09	
7,988.00	86.67	87.24	7,189.75	19.90	857.73	857.90	0.90	-0.75	-0.49	
8,082.00	87.72	88.18	7,194.35	23.65	951.54	951.75	1.50	1.12	1.00	
8,177.00	89.00	88.98	7,197.07	26.00	1,046.47	1,046.70	1.59	1.35	0.84	
8,271.00	89.53	88.62	7,198.28	27.97	1,140.44	1,140.68	0.68	0.56	-0.38	
8,364.00	89.66	87.73	7,198.93	30.93	1,233.39	1,233.66	0.97	0.14	-0.96	
8,459.00	89.26	88.12	7,199.83	34.37	1,328.32	1,328.63	0.59	-0.42	0.41	
8,554.00	89.33	89.28	7,201.00	36.52	1,423.29	1,423.61	1.22	0.07	1.22	
8,649.00	90.87	89.38	7,200.83	37.64	1,518.28	1,518.61	1.62	1.62	0.11	
8,743.00	89.90	89.77	7,200.20	38.33	1,612.27	1,612.61	1.11	-1.03	0.41	
8,838.00	90.64	88.83	7,199.75	39.49	1,707.26	1,707.60	1.26	0.78	-0.99	

<b>Company:</b>	Synergy Resources Corp.	<b>Local Co-ordinate Reference:</b>	Well SRC Vista 43-2C
<b>Project:</b>	Weld County, CO NAD 83	<b>TVD Reference:</b>	GL 5000' & KB 20' @ 5020.00ft (Precision 462)
<b>Site:</b>	SRC Vista	<b>MD Reference:</b>	GL 5000' & KB 20' @ 5020.00ft (Precision 462)
<b>Well:</b>	SRC Vista 43-2C	<b>North Reference:</b>	True
<b>Wellbore:</b>	OH	<b>Survey Calculation Method:</b>	Minimum Curvature
<b>Design:</b>	OH	<b>Database:</b>	Casper District

Survey									
Measured Depth (ft)	Inclination (°)	Azimuth (°)	Vertical Depth (ft)	+N/-S (ft)	+E/-W (ft)	Vertical Section (ft)	Dogleg Rate (°/100ft)	Build Rate (°/100ft)	Turn Rate (°/100ft)
8,932.00	89.43	88.27	7,199.70	41.87	1,801.23	1,801.59	1.42	-1.29	-0.60
9,028.00	88.39	88.83	7,201.52	44.30	1,897.18	1,897.56	1.23	-1.08	0.58
9,123.00	88.92	90.64	7,203.75	44.74	1,992.15	1,992.53	1.98	0.56	1.91
9,216.00	89.53	90.78	7,205.01	43.59	2,085.13	2,085.50	0.67	0.66	0.15
9,311.00	90.17	90.98	7,205.26	42.13	2,180.12	2,180.46	0.71	0.67	0.21
9,405.00	90.23	90.72	7,204.93	40.73	2,274.11	2,274.43	0.28	0.06	-0.28
9,501.00	88.93	91.46	7,205.63	38.91	2,370.09	2,370.38	1.56	-1.35	0.77
9,596.00	89.67	91.12	7,206.80	36.77	2,465.05	2,465.31	0.86	0.78	-0.36
9,689.00	88.73	91.37	7,208.09	34.75	2,558.02	2,558.25	1.05	-1.01	0.27
9,785.00	89.40	91.18	7,209.66	32.61	2,653.99	2,654.18	0.73	0.70	-0.20
9,880.00	90.20	90.79	7,209.99	30.98	2,748.97	2,749.14	0.94	0.84	-0.41
9,975.00	89.80	91.06	7,209.99	29.45	2,843.96	2,844.11	0.51	-0.42	0.28
10,069.00	89.73	90.94	7,210.38	27.81	2,937.94	2,938.07	0.15	-0.07	-0.13
10,164.00	90.94	91.62	7,209.82	25.68	3,032.91	3,033.01	1.46	1.27	0.72
10,259.00	90.94	91.50	7,208.26	23.10	3,127.87	3,127.92	0.13	0.00	-0.13
10,354.00	91.10	90.37	7,206.57	21.55	3,222.84	3,222.87	1.20	0.17	-1.19
10,449.00	90.37	89.58	7,205.35	21.59	3,317.83	3,317.86	1.13	-0.77	-0.83
10,545.00	89.87	89.25	7,205.15	22.57	3,413.82	3,413.86	0.62	-0.52	-0.34
10,640.00	90.57	89.78	7,204.79	23.37	3,508.82	3,508.85	0.92	0.74	0.56
10,734.00	89.53	90.00	7,204.71	23.55	3,602.82	3,602.85	1.13	-1.11	0.23
10,829.00	89.09	89.38	7,205.85	24.07	3,697.81	3,697.84	0.80	-0.46	-0.65
10,924.00	89.90	89.50	7,206.69	25.00	3,792.80	3,792.83	0.86	0.85	0.13
11,019.00	89.40	89.84	7,207.27	25.54	3,887.79	3,887.83	0.64	-0.53	0.36
11,111.00	89.90	89.63	7,207.83	25.97	3,979.79	3,979.83	0.59	0.54	-0.23
11,207.00	90.50	89.54	7,207.49	26.66	4,075.79	4,075.82	0.63	0.63	-0.09
11,301.00	88.66	89.44	7,208.18	27.50	4,169.78	4,169.82	1.96	-1.96	-0.11
11,396.00	88.93	89.58	7,210.18	28.31	4,264.75	4,264.80	0.32	0.28	0.15
11,491.00	89.56	89.60	7,211.43	28.99	4,359.74	4,359.79	0.66	0.66	0.02
11,586.00	89.93	89.78	7,211.86	29.51	4,454.74	4,454.78	0.43	0.39	0.19
11,640.00	90.03	89.30	7,211.87	29.94	4,508.74	4,508.78	0.91	0.19	-0.89
Last SDI MWD Production Survey									
11,700.00	90.03	89.30	7,211.84	30.67	4,568.73	4,568.78	0.00	0.00	0.00
SDI Projection to TD									

Design Annotations				
Measured Depth (ft)	Vertical Depth (ft)	Local Coordinates		Comment
		+N/-S (ft)	+E/-W (ft)	
225.00	224.99	-1.51	-0.10	First SDI MWD Survey
1,589.00	1,587.31	-6.94	-61.60	Last SDI MWD Surface Survey
1,656.00	1,654.23	-8.82	-64.39	First SDI MWD Production Survey
11,640.00	7,211.87	29.94	4,508.74	Last SDI MWD Production Survey
11,700.00	7,211.84	30.67	4,568.73	SDI Projection to TD

<b>Company:</b>	Synergy Resources Corp.	<b>Local Co-ordinate Reference:</b>	Well SRC Vista 43-2C
<b>Project:</b>	Weld County, CO NAD 83	<b>TVD Reference:</b>	GL 5000' & KB 20' @ 5020.00ft (Precision 462)
<b>Site:</b>	SRC Vista	<b>MD Reference:</b>	GL 5000' & KB 20' @ 5020.00ft (Precision 462)
<b>Well:</b>	SRC Vista 43-2C	<b>North Reference:</b>	True
<b>Wellbore:</b>	OH	<b>Survey Calculation Method:</b>	Minimum Curvature
<b>Design:</b>	OH	<b>Database:</b>	Casper District

Checked By: \_\_\_\_\_ Approved By: \_\_\_\_\_ Date: \_\_\_\_\_